

# Location Index

Index of locations in Vermont, organized by county and township. Includes a grid system (A-L, 1-19) for navigation.

## Legend

**Transportation**

- Interstate Highway
- US Route
- State Route (Controlled Access)
- State Route
- Town Highway
- Recreational Highway
- Road Closed in Winter
- Railroad
- Tail Ferry
- Rail Trail
- Airport with Commercial Service
- Airport

**Municipal**

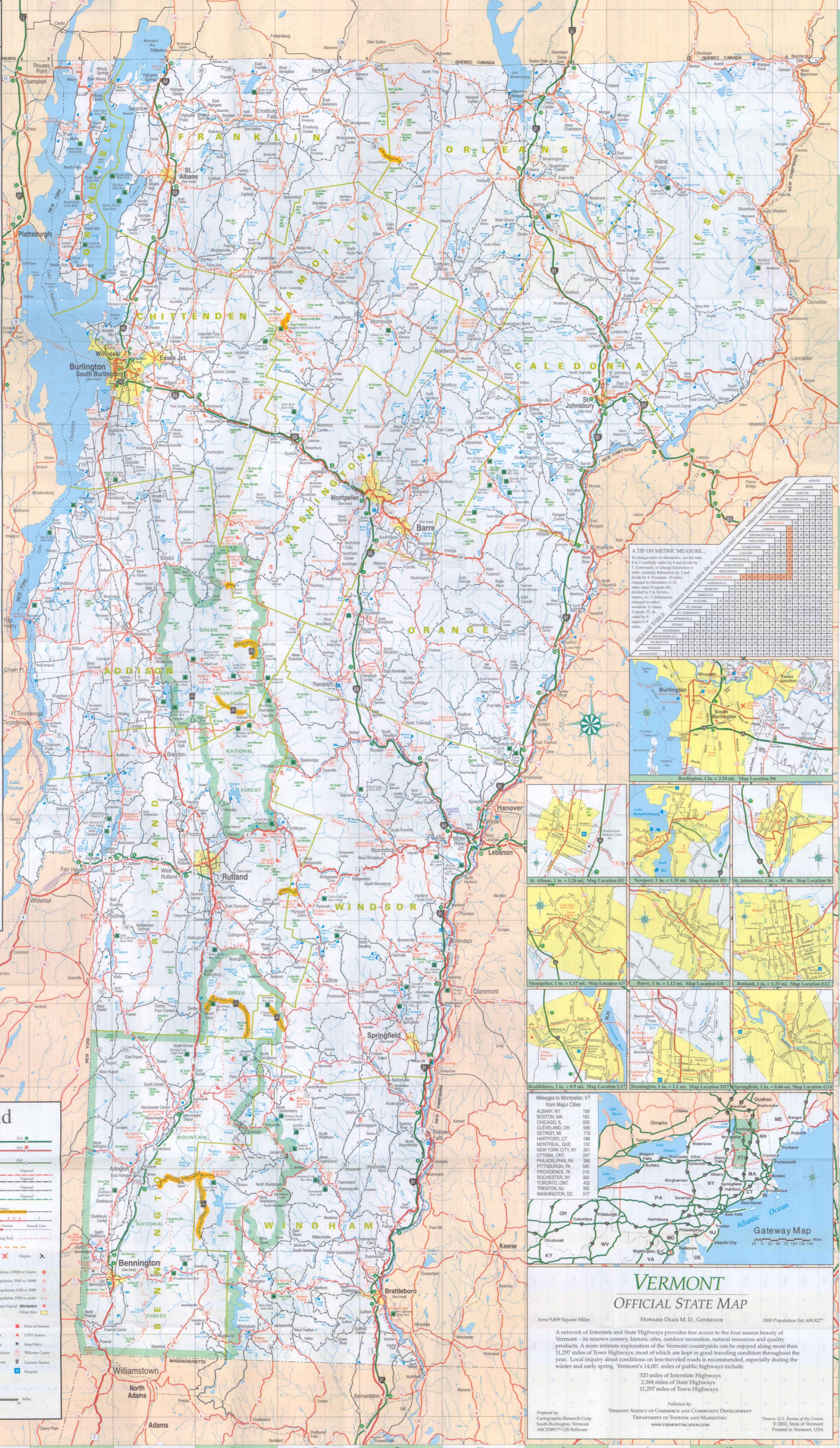
- International Boundary
- State Boundary
- County Boundary
- Green Mountain National Forest Boundary

**Map Features**

- Rain area with sanitary and flood-control facilities
- Rain area with sanitary facilities
- Rain area with no facilities
- Public Recreation Site
- Control Bridge
- Golf Course
- Alpine Ski Area
- Nude Ski Area
- Public Fishing Access
- Public Boat Access
- Fish Hatchery
- Park of Interest
- USFS Station
- State Police
- Wildlife Center
- Census Station
- Hospital

**Map Scale**

Map Scale 1:250,000

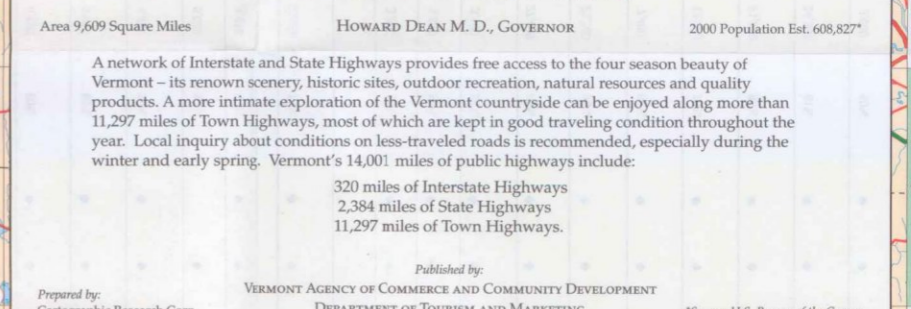
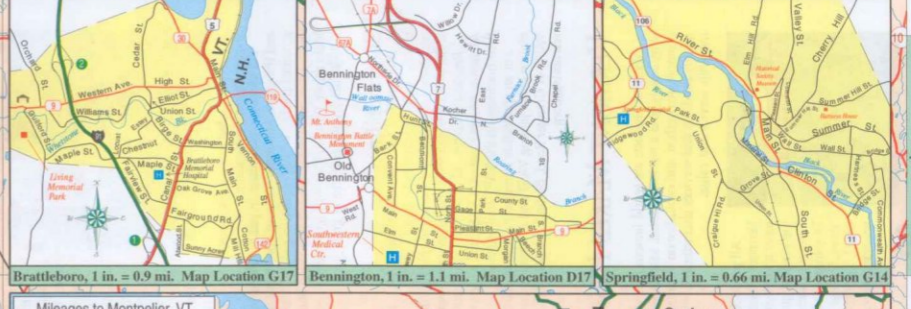
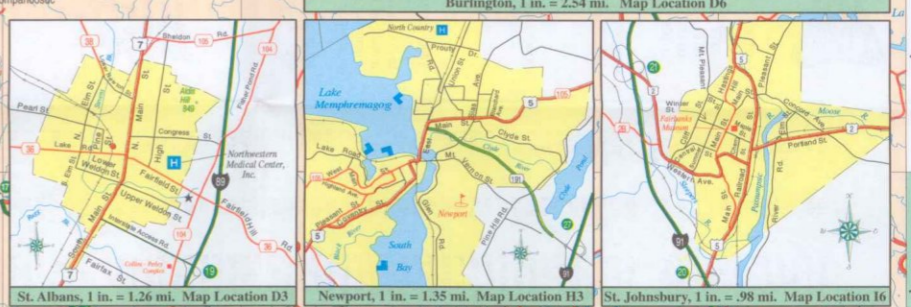


### A TIP ON METRIC MEASUREMENT

To change miles to kilometers, use the ratio 1.6 to 1 multiply miles by 1.6 and divide by 5. Conversely, to change kilometers to miles, multiply kilometers by 5 and divide by 1.6. Example: 10 miles changed to kilometers is 16 kilometers.

**MILEAGE TABLE** Distances shown follow the shortest possible routes without regard to route type.

From	To	Miles	From	To	Miles
ALBANY	BARTON	48	BRATTLEBORO	WINDSOR	10
ALBANY	BRATTLEBORO	100	BRATTLEBORO	WINDSOR	10
ALBANY	BRATTLEBORO	100	BRATTLEBORO	WINDSOR	10
ALBANY	BRATTLEBORO	100	BRATTLEBORO	WINDSOR	10
ALBANY	BRATTLEBORO	100	BRATTLEBORO	WINDSOR	10



## VERMONT OFFICIAL STATE MAP

Area 9,609 Square Miles HOWARD DEAN M. D., GOVERNOR 2000 Population Est. 608,827\*

A network of Interstate and State Highways provides free access to the four season beauty of Vermont – its renowned scenery, historic sites, outdoor recreation, natural resources and quality products. A more intimate exploration of the Vermont countryside can be enjoyed along more than 11,297 miles of Town Highways, most of which are kept in good traveling condition throughout the year. Local inquiry about conditions on less-traveled roads is recommended, especially during the winter and early spring. Vermont's 14,001 miles of public highways include:

- 320 miles of Interstate Highways
- 2,384 miles of State Highways
- 11,297 miles of Town Highways

Prepared by: Cartographic Research Corp., South Burlington, Vermont ARCNF03™ GIS Software

Published by: VERMONT DEPARTMENT OF COMMERCE AND COMMUNITY DEVELOPMENT VERMONT DEPARTMENT OF TOURISM AND MARKETING WWW.VERMONTGATEWAY.COM

\*Source: U.S. Bureau of the Census © 2002, State of Vermont Printed in Vermont, USA

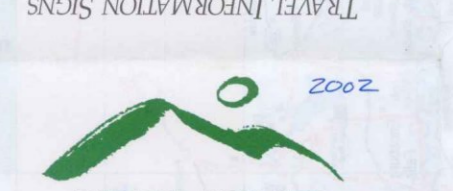


WELCOME AND INFORMATION CENTERS
Vermont's official welcome centers provide the first stop once you enter the Green Mountain State.

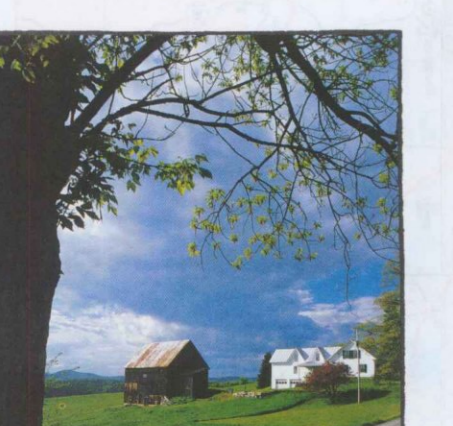
Where additional travel information will be available.
Floor Chamber of Commerce offices or regional information books.



TRAVEL INFORMATION SIGNS
Businesses located off major highways will display the Travel Information Sign.



VERMONT OFFICIAL STATE MAP



HOW TO USE THIS MAP
The accordion fold of this map is designed for reading any two columns of the text conveniently without unfolding the entire map.

FOR FREE DISTRIBUTION ONLY
www.vermontvacation.com

INFORMATION SOURCES
Regional Information Centers along I-91 and I-89 provide both regional and statewide information.

Vermont Attractions Association
Vermont Dept. of Fish & Wildlife
Vermont Department of Forests, Parks & Recreation

Green Mountain National Forest
US Forest Service
Vermont Ski Areas Association

EMERGENCIES: 911
Vermont has instituted a statewide 911 system to dispatch emergency services 24 hours a day.

WELCOME AND INFORMATION CENTERS

Vermont's official welcome centers provide the first stop once you enter the Green Mountain State.



- Vermont Welcome Center at Highgate I-89, Canadian Border
Lake Champlain Islands Welcome Center at Albany
Williston
Northwestern Vermont Information Center at Georgia

REGIONAL TRAVEL INFORMATION

Map of Vermont with 12 numbered regions and descriptions of travel information services in each region.

TEMPERATURE AVERAGES

Table showing maximum/minimum temperatures by month for Burlington, VT.

DOUANES

Cet article partage 90.3 milles (145 km) de frontiere avec la province canadienne du Quebec.
Tout voyageur doit faire preuve de citoyennete avant d'entreprendre un voyage au Quebec.

Get a FREE Trial Issue
of Vermont Life, "one of the most beautiful magazines in the world."

SAFETY RESTRAINTS REQUIRED
Vermont law requires all vehicle occupants be secured in federally approved safety belts.

Statewide Poison Information Center (24-hr.)
Vermont State Police Headquarters

AGRICULTURAL HERITAGE

Vermont farms contribute to both the pastoral quality of the landscape and the traveler's dining pleasure.



NATURAL HERITAGE
Rural traditions and pastoral landscapes are cherished by Vermonters who have legislated a billboard-free highway system.

CULTURAL HERITAGE
Vermont is blessed with an abundance of historic properties, districts, and landmarks.

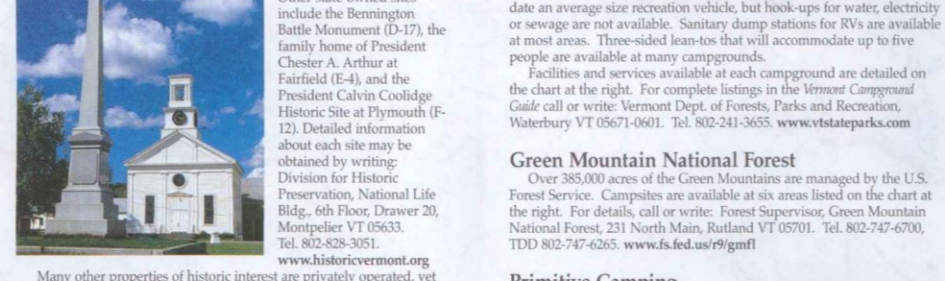
ARTS
Scores of community arts organizations are active in Vermont, providing residents and visitors with a wide array of cultural activities.

CRAFTS
In addition to the many seasonal crafts fairs and festivals held across the state, several regional craft centers operate year-round.

Sanitation Regulations
It is illegal to discharge sewage into the waters of Lake Champlain or any other body of water in Vermont.

Canoeing & Kayaking
Several of Vermont's major rivers provide long stretches ideal for canoe trips.

HISTORIC SITES AND PLACES
Settlement of Vermont began in earnest shortly before the American Revolution.



COVERED BRIDGES
More than 100 of Vermont's covered bridges are indicated on this map.

PRIVATELY OWNED CAMPGROUNDS
The Vermont Campground Association publishes the Vermont Campground Guide.

MUSEUMS, GALLERIES, AND HISTORICAL SOCIETIES

Vermont is home to nearly two hundred historical societies and close to one hundred museums and galleries.

FISHING

Table listing fishing regulations for various species like Trout, Salmon, and Bass.

WATCHABLE WILDLIFE
From the rugged Green Mountains to pristine Lake Champlain and nearby Missisquoi National Wildlife Refuge.

HUNTING

The Vermont Digest of Hunting, Fishing and Trapping Laws is available from the Vermont Fish and Wildlife Dept.

Green Mountain National Forest

Opportunities for hunting large and small game are also available in Green Mountains National Forest lands.

Other Game Animals

Black Bear - Determined annually by one bear per calendar year per person.

Game Birds

Partridge (Ruffed Grouse) - Last Sat. in Sept.-Dec. 31. Limit: 4 daily, 5 in possession.

Private Campgrounds

Table listing private campgrounds with columns for Map Grid, RMO, Town, Campground, and Phone.

Private Campgrounds

Table listing private campgrounds with columns for Map Grid, RMO, Town, Campground, and Phone.

Private Campgrounds

Table listing private campgrounds with columns for Map Grid, RMO, Town, Campground, and Phone.

Private Campgrounds

Table listing private campgrounds with columns for Map Grid, RMO, Town, Campground, and Phone.

Private Campgrounds

Table listing private campgrounds with columns for Map Grid, RMO, Town, Campground, and Phone.

Vermont's Area Code is 802

PUBLIC RECREATION AREAS

State Forest or Park, National Forest, Federal, Facilities Available, Boating & Boat Rentals, For Campers Only, Big Game, Water Fowl, Small Game, Trout or Salmon, Warm Water Fishes, Accessible by People with Disabilities.

Large table listing public recreation areas with columns for Map Area, Phone, Town, and various facilities like Boating, Fishing, etc.

ALPINE SKI AREAS

Table listing ski resorts with columns for Ski Resort, Map Location, Trails, Vertical Rise, etc.

Cross Country Skiing and Snowshoeing

Table listing cross country ski areas with columns for Ski Resort, Map Location, Trails, etc.

Snowmobiling

Table listing snowmobiling trails with columns for Ski Resort, Map Location, Trails, etc.

VERMONT MAKES IT SPECIAL

Vermont products are world famous for expert Yankee craftsmanship, beauty, and attention to detail.