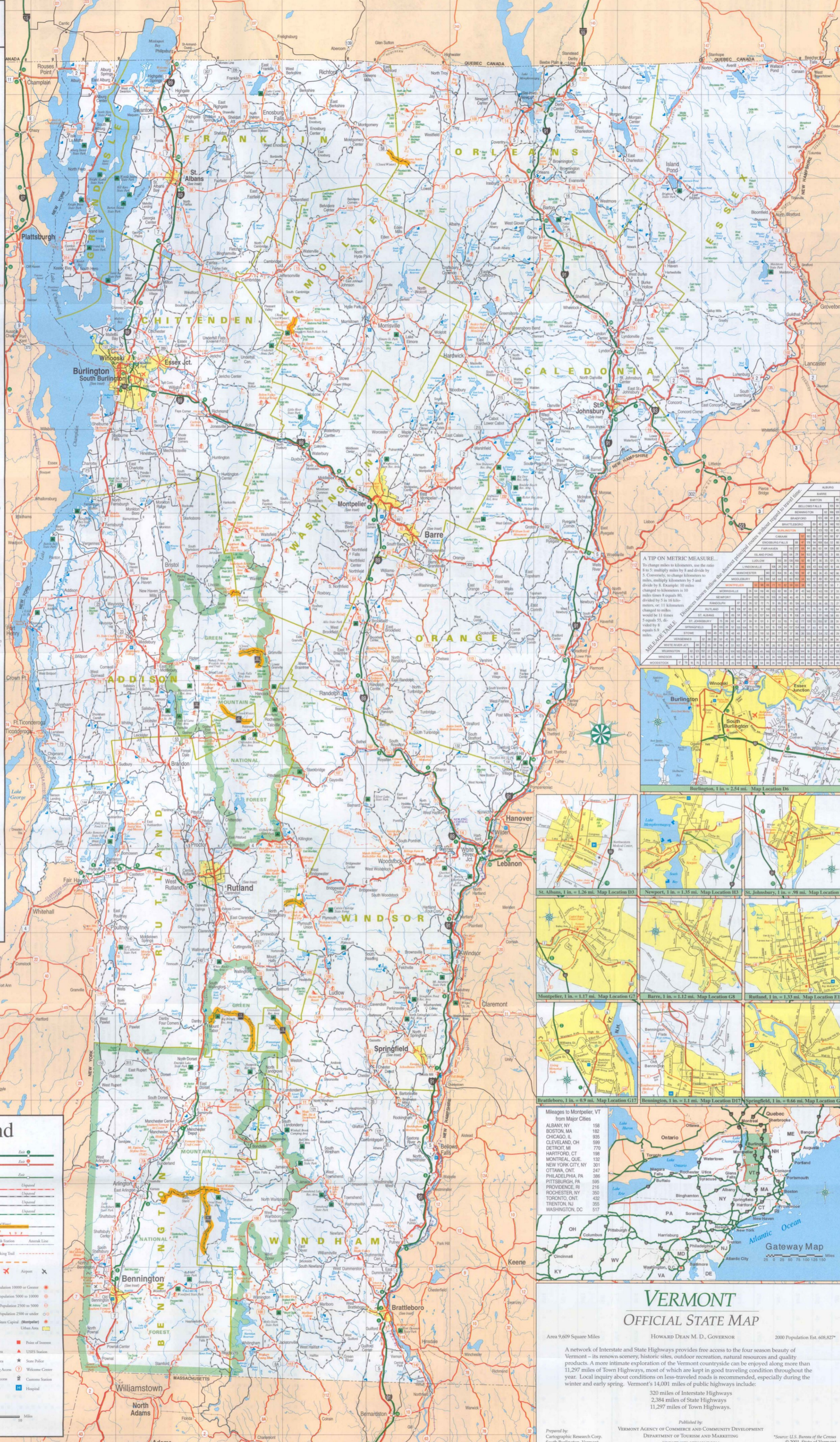


Location Index

Index of locations and their corresponding map grid coordinates (A-L, 1-19).

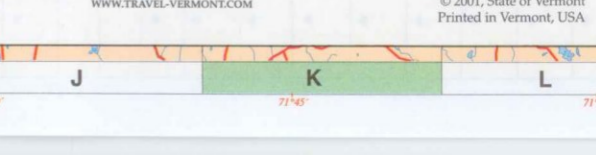
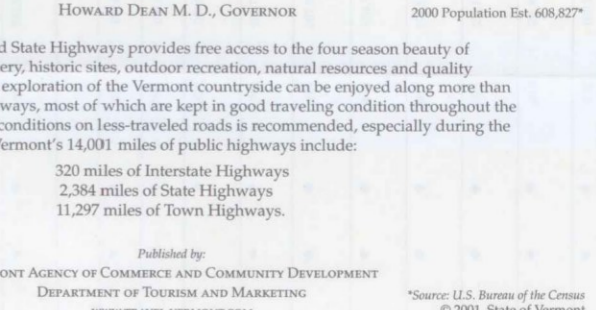
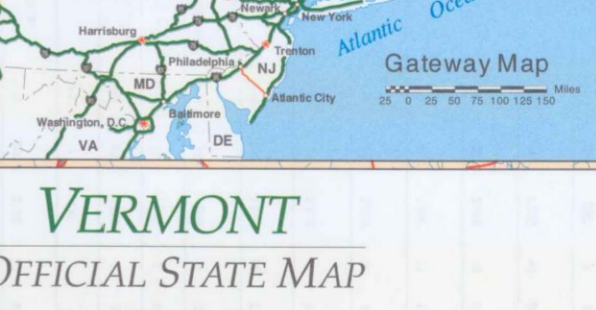
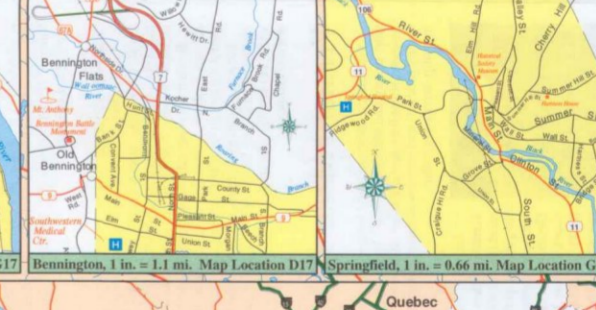
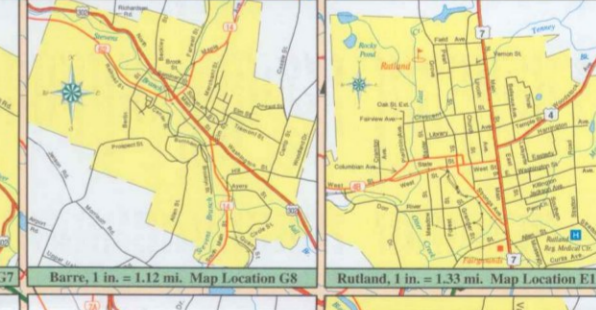
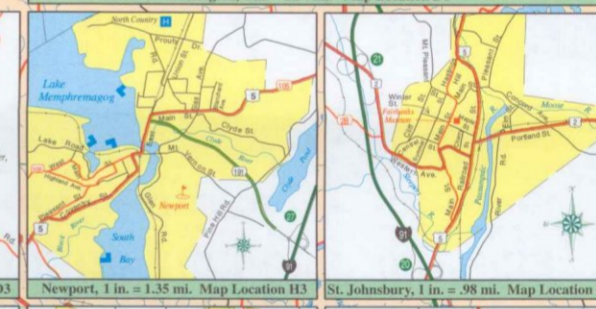
A	Adams, G-7	Albany, H-4	Albany, C-3	Albany, F-4	Albany, G-5	Albany, H-6	Albany, I-7	Albany, J-8	Albany, K-9	Albany, L-10	Albany, M-11	Albany, N-12	Albany, O-13	Albany, P-14	Albany, Q-15	Albany, R-16	Albany, S-17	Albany, T-18	Albany, U-19	
B	Barnesville, F-4	Barnesville, G-5	Barnesville, H-6	Barnesville, I-7	Barnesville, J-8	Barnesville, K-9	Barnesville, L-10	Barnesville, M-11	Barnesville, N-12	Barnesville, O-13	Barnesville, P-14	Barnesville, Q-15	Barnesville, R-16	Barnesville, S-17	Barnesville, T-18	Barnesville, U-19	Barnesville, V-20	Barnesville, W-21	Barnesville, X-22	Barnesville, Y-23
C	Champlain, A-1	Champlain, B-2	Champlain, C-3	Champlain, D-4	Champlain, E-5	Champlain, F-6	Champlain, G-7	Champlain, H-8	Champlain, I-9	Champlain, J-10	Champlain, K-11	Champlain, L-12	Champlain, M-13	Champlain, N-14	Champlain, O-15	Champlain, P-16	Champlain, Q-17	Champlain, R-18	Champlain, S-19	Champlain, T-20
D	Chittenden, A-1	Chittenden, B-2	Chittenden, C-3	Chittenden, D-4	Chittenden, E-5	Chittenden, F-6	Chittenden, G-7	Chittenden, H-8	Chittenden, I-9	Chittenden, J-10	Chittenden, K-11	Chittenden, L-12	Chittenden, M-13	Chittenden, N-14	Chittenden, O-15	Chittenden, P-16	Chittenden, Q-17	Chittenden, R-18	Chittenden, S-19	Chittenden, T-20
E	Franklin, A-1	Franklin, B-2	Franklin, C-3	Franklin, D-4	Franklin, E-5	Franklin, F-6	Franklin, G-7	Franklin, H-8	Franklin, I-9	Franklin, J-10	Franklin, K-11	Franklin, L-12	Franklin, M-13	Franklin, N-14	Franklin, O-15	Franklin, P-16	Franklin, Q-17	Franklin, R-18	Franklin, S-19	Franklin, T-20
F	Orleans, A-1	Orleans, B-2	Orleans, C-3	Orleans, D-4	Orleans, E-5	Orleans, F-6	Orleans, G-7	Orleans, H-8	Orleans, I-9	Orleans, J-10	Orleans, K-11	Orleans, L-12	Orleans, M-13	Orleans, N-14	Orleans, O-15	Orleans, P-16	Orleans, Q-17	Orleans, R-18	Orleans, S-19	Orleans, T-20
G	Washington, A-1	Washington, B-2	Washington, C-3	Washington, D-4	Washington, E-5	Washington, F-6	Washington, G-7	Washington, H-8	Washington, I-9	Washington, J-10	Washington, K-11	Washington, L-12	Washington, M-13	Washington, N-14	Washington, O-15	Washington, P-16	Washington, Q-17	Washington, R-18	Washington, S-19	Washington, T-20
H	Montpelier, A-1	Montpelier, B-2	Montpelier, C-3	Montpelier, D-4	Montpelier, E-5	Montpelier, F-6	Montpelier, G-7	Montpelier, H-8	Montpelier, I-9	Montpelier, J-10	Montpelier, K-11	Montpelier, L-12	Montpelier, M-13	Montpelier, N-14	Montpelier, O-15	Montpelier, P-16	Montpelier, Q-17	Montpelier, R-18	Montpelier, S-19	Montpelier, T-20
I	Barre, A-1	Barre, B-2	Barre, C-3	Barre, D-4	Barre, E-5	Barre, F-6	Barre, G-7	Barre, H-8	Barre, I-9	Barre, J-10	Barre, K-11	Barre, L-12	Barre, M-13	Barre, N-14	Barre, O-15	Barre, P-16	Barre, Q-17	Barre, R-18	Barre, S-19	Barre, T-20
J	St. Albans, A-1	St. Albans, B-2	St. Albans, C-3	St. Albans, D-4	St. Albans, E-5	St. Albans, F-6	St. Albans, G-7	St. Albans, H-8	St. Albans, I-9	St. Albans, J-10	St. Albans, K-11	St. Albans, L-12	St. Albans, M-13	St. Albans, N-14	St. Albans, O-15	St. Albans, P-16	St. Albans, Q-17	St. Albans, R-18	St. Albans, S-19	St. Albans, T-20
K	Essex, A-1	Essex, B-2	Essex, C-3	Essex, D-4	Essex, E-5	Essex, F-6	Essex, G-7	Essex, H-8	Essex, I-9	Essex, J-10	Essex, K-11	Essex, L-12	Essex, M-13	Essex, N-14	Essex, O-15	Essex, P-16	Essex, Q-17	Essex, R-18	Essex, S-19	Essex, T-20
L	Windsor, A-1	Windsor, B-2	Windsor, C-3	Windsor, D-4	Windsor, E-5	Windsor, F-6	Windsor, G-7	Windsor, H-8	Windsor, I-9	Windsor, J-10	Windsor, K-11	Windsor, L-12	Windsor, M-13	Windsor, N-14	Windsor, O-15	Windsor, P-16	Windsor, Q-17	Windsor, R-18	Windsor, S-19	Windsor, T-20



MILEAGE TABLE

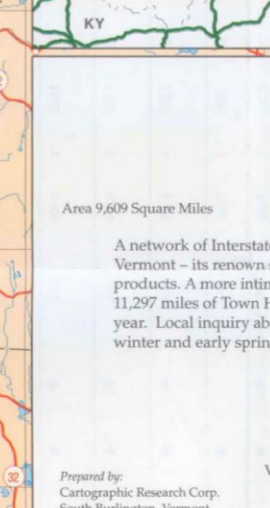
Distances shown below the table are the shortest possible routes between points to various cities.

From	To	Miles
Burlington	Albany	100
Burlington	Montpelier	117
Burlington	Barre	112
Burlington	St. Albans	126
Burlington	Essex	135
Burlington	Windsor	133
Burlington	Rutland	133
Burlington	Brattleboro	109
Burlington	Bennington	111
Burlington	Springfield	106



Mileages to Montpelier, VT from Major Cities

ALBANY, NY	158
BOSTON, MA	182
CHICAGO, IL	935
CLEVELAND, OH	599
DETROIT, MI	770
HARTFORD, CT	198
MONTREAL, QUE.	132
NEW YORK CITY, NY	301
OTTAWA, ONT.	247
PHILADELPHIA, PA	386
PITTSBURGH, PA	595
PROVIDENCE, RI	216
ROCHESTER, NY	350
TORONTO, ONT.	432
TRENTON, NJ	355
WASHINGTON, DC	517



VERMONT OFFICIAL STATE MAP

Area 9,609 Square Miles
HOWARD DEAN M. D., GOVERNOR
2000 Population Est. 608,827*

A network of Interstate and State Highways provides free access to the four season beauty of Vermont — its renowned scenic, historic sites, outdoor recreation, natural resources and quality products. A more intimate exploration of the Vermont countryside can be enjoyed along more than 11,297 miles of Town Highways, most of which are kept in good traveling condition throughout the year. Local inquiry about conditions on less-traveled roads is recommended, especially during the winter and early spring. Vermont's 14,001 miles of public highways include:

- 320 miles of Interstate Highways
- 2,384 miles of State Highways
- 11,297 miles of Town Highways.

Legend

Transportation

- Increase
- US Route
- State Route (numbered series)
- State Route
- Town Highway
- Recreational Highway
- Road Closed in Winter
- Mileage
- Railroads
- Toll Ferry
- Rail Trail
- Hiking Trail
- Airports with Commercial Jet Service

Municipal

- International Boundary
- State Boundary
- County Boundary
- Green Mountain National Forest Boundary

Map Features

- Res area with sanitary and handicapped facilities
- Res area with sanitary facilities
- Res area with no facilities
- Public Recreation Site
- Covered Bridge
- Golf Course
- Alpine Ski Area
- Nesic Ski Area
- Public Fishing Access
- Public Boat Access
- Fish Hatchery
- Point of Interest
- USPS Station
- State Police
- Welcome Center
- Customs Station
- Hospital

Map Scale

Map Scale 1:250,000
0 5 10 Miles
0 5 10 Kilometers

