



# Location Index

Click on 1999 population figures. Based on 1998.

A	Adams, G-7 Albany, C-8 Albany, D-9 Albany, E-10 Albany, F-11 Albany, G-12 Albany, H-13 Albany, I-14 Albany, J-15 Albany, K-16 Albany, L-17	B	Barnes, G-1 Barnes, H-2 Barnes, I-3 Barnes, J-4 Barnes, K-5 Barnes, L-6 Barnes, M-7 Barnes, N-8 Barnes, O-9 Barnes, P-10 Barnes, Q-11 Barnes, R-12 Barnes, S-13 Barnes, T-14 Barnes, U-15 Barnes, V-16 Barnes, W-17 Barnes, X-18 Barnes, Y-19 Barnes, Z-20	C	Champlain, G-1 Champlain, H-2 Champlain, I-3 Champlain, J-4 Champlain, K-5 Champlain, L-6 Champlain, M-7 Champlain, N-8 Champlain, O-9 Champlain, P-10 Champlain, Q-11 Champlain, R-12 Champlain, S-13 Champlain, T-14 Champlain, U-15 Champlain, V-16 Champlain, W-17 Champlain, X-18 Champlain, Y-19 Champlain, Z-20	D	Dartmouth, G-1 Dartmouth, H-2 Dartmouth, I-3 Dartmouth, J-4 Dartmouth, K-5 Dartmouth, L-6 Dartmouth, M-7 Dartmouth, N-8 Dartmouth, O-9 Dartmouth, P-10 Dartmouth, Q-11 Dartmouth, R-12 Dartmouth, S-13 Dartmouth, T-14 Dartmouth, U-15 Dartmouth, V-16 Dartmouth, W-17 Dartmouth, X-18 Dartmouth, Y-19 Dartmouth, Z-20	E	Essex, G-1 Essex, H-2 Essex, I-3 Essex, J-4 Essex, K-5 Essex, L-6 Essex, M-7 Essex, N-8 Essex, O-9 Essex, P-10 Essex, Q-11 Essex, R-12 Essex, S-13 Essex, T-14 Essex, U-15 Essex, V-16 Essex, W-17 Essex, X-18 Essex, Y-19 Essex, Z-20	F	Franklin, G-1 Franklin, H-2 Franklin, I-3 Franklin, J-4 Franklin, K-5 Franklin, L-6 Franklin, M-7 Franklin, N-8 Franklin, O-9 Franklin, P-10 Franklin, Q-11 Franklin, R-12 Franklin, S-13 Franklin, T-14 Franklin, U-15 Franklin, V-16 Franklin, W-17 Franklin, X-18 Franklin, Y-19 Franklin, Z-20	G	Green, G-1 Green, H-2 Green, I-3 Green, J-4 Green, K-5 Green, L-6 Green, M-7 Green, N-8 Green, O-9 Green, P-10 Green, Q-11 Green, R-12 Green, S-13 Green, T-14 Green, U-15 Green, V-16 Green, W-17 Green, X-18 Green, Y-19 Green, Z-20	H	Hardwick, G-1 Hardwick, H-2 Hardwick, I-3 Hardwick, J-4 Hardwick, K-5 Hardwick, L-6 Hardwick, M-7 Hardwick, N-8 Hardwick, O-9 Hardwick, P-10 Hardwick, Q-11 Hardwick, R-12 Hardwick, S-13 Hardwick, T-14 Hardwick, U-15 Hardwick, V-16 Hardwick, W-17 Hardwick, X-18 Hardwick, Y-19 Hardwick, Z-20	I	Island Pond, G-1 Island Pond, H-2 Island Pond, I-3 Island Pond, J-4 Island Pond, K-5 Island Pond, L-6 Island Pond, M-7 Island Pond, N-8 Island Pond, O-9 Island Pond, P-10 Island Pond, Q-11 Island Pond, R-12 Island Pond, S-13 Island Pond, T-14 Island Pond, U-15 Island Pond, V-16 Island Pond, W-17 Island Pond, X-18 Island Pond, Y-19 Island Pond, Z-20	J	Johnsbury, G-1 Johnsbury, H-2 Johnsbury, I-3 Johnsbury, J-4 Johnsbury, K-5 Johnsbury, L-6 Johnsbury, M-7 Johnsbury, N-8 Johnsbury, O-9 Johnsbury, P-10 Johnsbury, Q-11 Johnsbury, R-12 Johnsbury, S-13 Johnsbury, T-14 Johnsbury, U-15 Johnsbury, V-16 Johnsbury, W-17 Johnsbury, X-18 Johnsbury, Y-19 Johnsbury, Z-20	K	Keene, G-1 Keene, H-2 Keene, I-3 Keene, J-4 Keene, K-5 Keene, L-6 Keene, M-7 Keene, N-8 Keene, O-9 Keene, P-10 Keene, Q-11 Keene, R-12 Keene, S-13 Keene, T-14 Keene, U-15 Keene, V-16 Keene, W-17 Keene, X-18 Keene, Y-19 Keene, Z-20	L	Lancaster, G-1 Lancaster, H-2 Lancaster, I-3 Lancaster, J-4 Lancaster, K-5 Lancaster, L-6 Lancaster, M-7 Lancaster, N-8 Lancaster, O-9 Lancaster, P-10 Lancaster, Q-11 Lancaster, R-12 Lancaster, S-13 Lancaster, T-14 Lancaster, U-15 Lancaster, V-16 Lancaster, W-17 Lancaster, X-18 Lancaster, Y-19 Lancaster, Z-20
---	--	---	---	---	---	---	---	---	---	---	---	---	---	---	---	---	---	---	---	---	---	---	---

# Legend

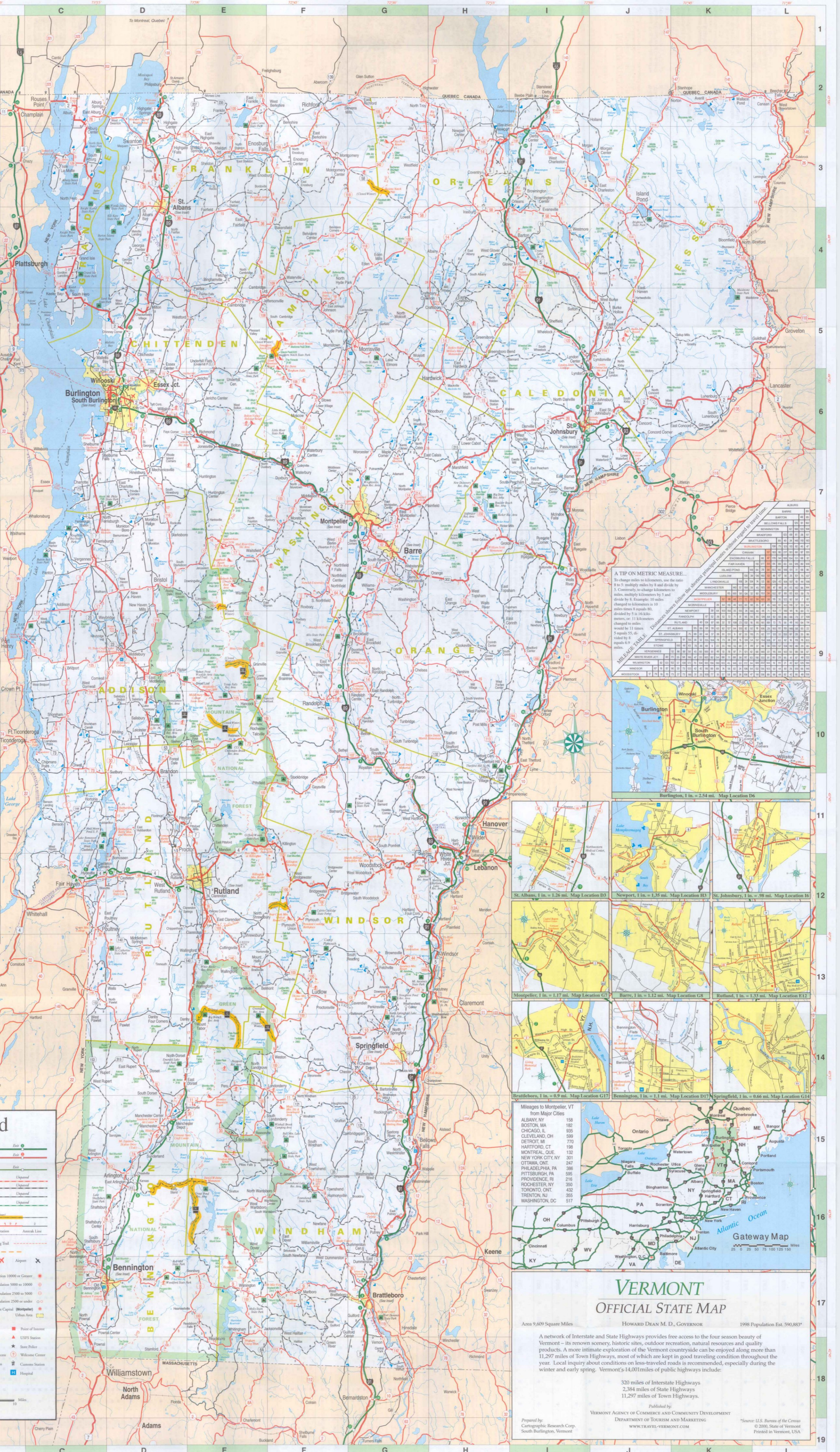
	Interstate		State Route
	US Route		County Road
	State Route (controlled access)		Toll Road
	State Route (uncontrolled access)		Recreational Highway
	Road Closed in Winter		Mileage
	Railroad		Toll Ferry
	Airport with Commercial Jet Service		Hiking Trail
	Municipal Boundary		Rail Trail
	State Boundary		Airport
	County Boundary		Population 10000 or Greater
	Green Mountain National Forest Boundary		Population 5000 to 10000
	Map Features		Population 2000 to 5000
	Run area with secondary and handicapped facilities		Population 2500 or under
	Run area with utility facilities		State Capital (Montpelier)
	Run area with no facilities		Urban Area
	Public Recreation Area		Gold Course
	Covered Bridge		Print of Towns
			USPS Station
			State Police
			Wildlife Center
			Cannery Station
			Hospital

# Map Scale

Map Scale 1:250,000

0 10 20 Miles

0 10 20 Kilometers

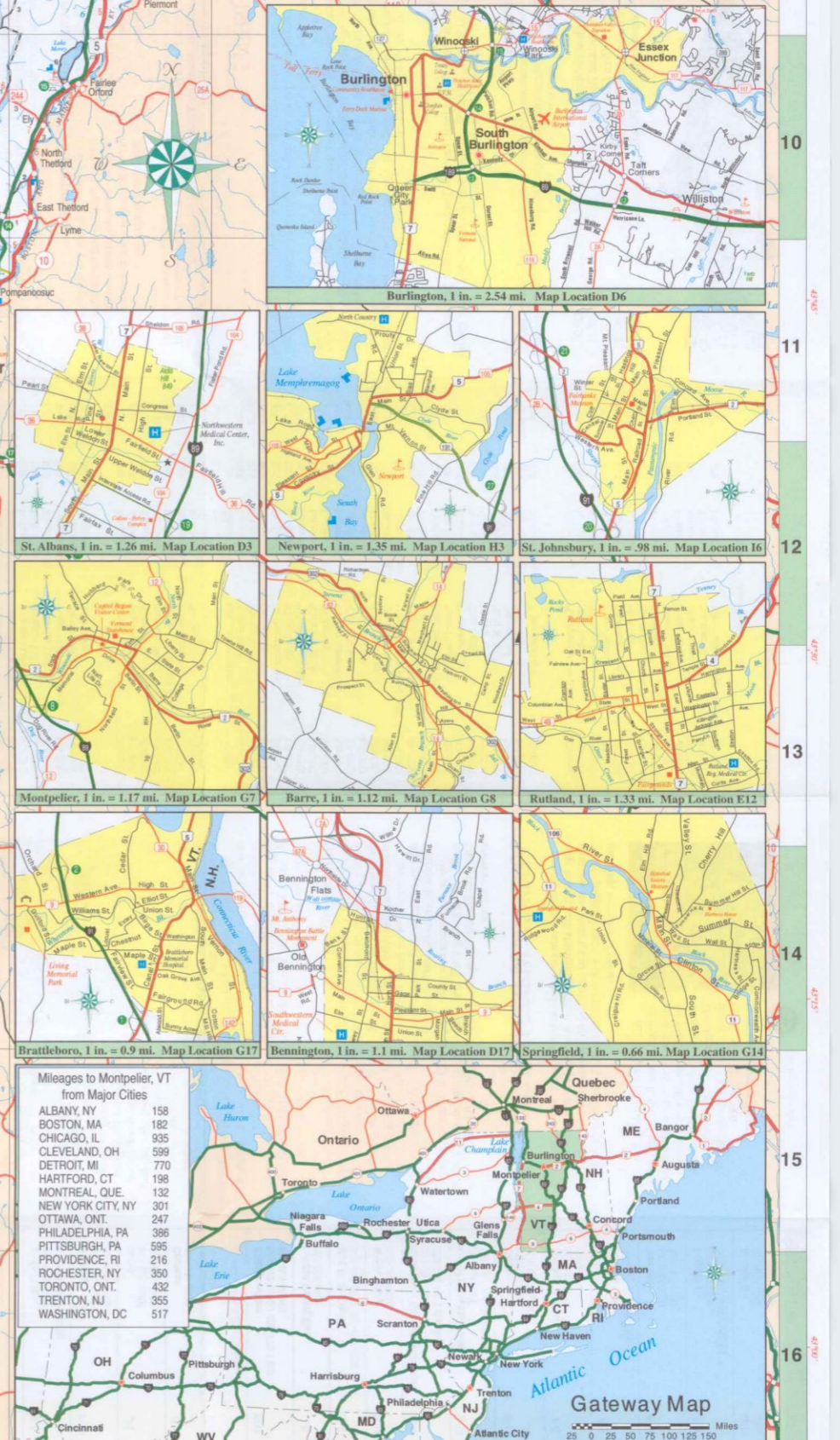


### A TIP ON METRIC MEASURE...

To change miles to kilometers, the ratio is 5 to 8. Multiply miles by 8 and divide by 5. Conversely, to change kilometers to miles, multiply kilometers by 5 and divide by 8. Example: 10 miles changed to kilometers is 16 kilometers (10 x 8 = 80, 80 ÷ 5 = 16).

To change kilometers to miles, the ratio is 5 to 8. Multiply kilometers by 5 and divide by 8. Example: 16 kilometers changed to miles is 10 miles (16 x 5 = 80, 80 ÷ 8 = 10).

MILES	KILOMETERS
1	1.6
2	3.2
3	4.8
4	6.4
5	8.0
6	9.6
7	11.2
8	12.8
9	14.4
10	16.0
11	17.6
12	19.2
13	20.8
14	22.4
15	24.0
16	25.6
17	27.2
18	28.8
19	30.4
20	32.0



## VERMONT OFFICIAL STATE MAP

Area 9,609 Square Miles HOWARD DEAN M.D., GOVERNOR 1998 Population Est. 590,883\*

A network of Interstate and State Highways provides free access to the four season beauty of Vermont - its renowned scenery, historic sites, outdoor recreation, natural resources and quality products. A more intimate exploration of the Vermont countryside can be enjoyed along more than 11,297 miles of Town Highways, most of which are kept in good traveling condition throughout the year. Local inquiry about conditions on less-traveled roads is recommended, especially during the winter and early spring. Vermont's 14,000 miles of public highways include:

- 320 miles of Interstate Highways
- 2,384 miles of State Highways
- 11,297 miles of Town Highways.

Published by: VERMONT AGENCY OF COMMERCE AND COMMUNITY DEVELOPMENT  
DEPARTMENT OF TOURISM AND MARKETING  
WWW.STATE-VERMONT.COM

Prepared by: Cartographic Research Corp. South Burlington, Vermont

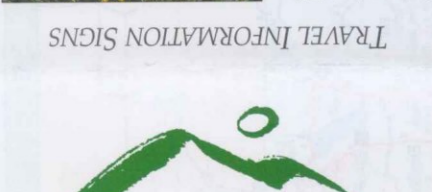
\*Source: U.S. Bureau of the Census © 2000 State of Vermont Printed in Vermont, USA

WELCOME AND INFORMATION CENTERS
Vermont's official welcome centers should be your first stop once you enter the Green Mountain State. They are staffed with friendly Vermonters who will assist with reservations, travel information, and directions to help make your visit to Vermont all the more enjoyable.

Additional services available at these centers include:
- Chamber of Commerce offices or seasonal Information Booths
- Incoming travelers and non-Vermonters
- Please see located in Interstate Area, Welcome Centers at



Travel Information Signs
Business located off
Highways
Directions
Check the business name
during the business hours
of operation.



VERMONT OFFICIAL STATE MAP 2000



For the most up-to-date and accurate information for any region of Vermont, call that region's Regional Marketing Organization. The RMOs are local tourism partners with the Vermont Department of Tourism and Marketing and are in close contact with local restaurants, inns, B&Bs, motels, stores and tourist attractions.

HOW TO USE THIS MAP
The accordion fold of the map is designed for reading any two columns of the text conveniently without unfolding the entire map.

FOR FREE DISTRIBUTION ONLY
www.travel-vermont.com

INFORMATION SOURCES

- Regional Information Centers along I-91 and I-89 provide both national and state information. 7:00 a.m. to 4:30 p.m. daily.
Vermont Attractions Association
Vermont Dept. of Fish & Wildlife
Vermont Department of Tourism & Marketing
Green Mountain National Forest
Vermont Ski Areas Association

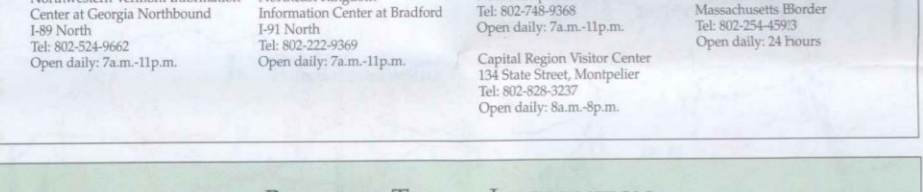
EMERGENCIES: 911
Vermont has instituted a statewide 911 system to dispatch emergency services 24 hours daily. To contact the Vermont State Police Headquarters for other matters, call 802-244-8727.

WELCOME AND INFORMATION CENTERS

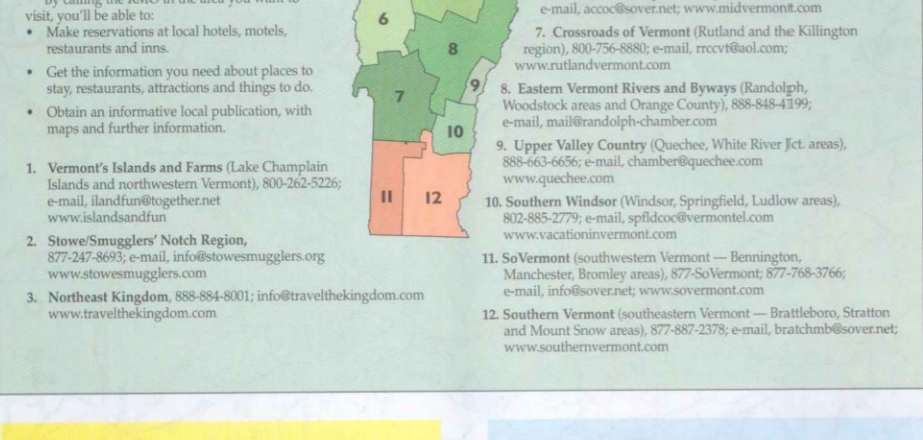
Vermont's official welcome centers should be your first stop once you enter the Green Mountain State. They are staffed with friendly Vermonters who will assist with reservations, travel information, and directions to help make your visit to Vermont all the more enjoyable.



Additional services available at these centers include:
- Chamber of Commerce offices or seasonal Information Booths
- Incoming travelers and non-Vermonters
- Please see located in Interstate Area, Welcome Centers at



VERMONT OFFICIAL STATE MAP 2000



For the most up-to-date and accurate information for any region of Vermont, call that region's Regional Marketing Organization. The RMOs are local tourism partners with the Vermont Department of Tourism and Marketing and are in close contact with local restaurants, inns, B&Bs, motels, stores and tourist attractions.

HOW TO USE THIS MAP
The accordion fold of the map is designed for reading any two columns of the text conveniently without unfolding the entire map.

FOR FREE DISTRIBUTION ONLY
www.travel-vermont.com

INFORMATION SOURCES

- Regional Information Centers along I-91 and I-89 provide both national and state information. 7:00 a.m. to 4:30 p.m. daily.
Vermont Attractions Association
Vermont Dept. of Fish & Wildlife
Vermont Department of Tourism & Marketing
Green Mountain National Forest
Vermont Ski Areas Association

EMERGENCIES: 911
Vermont has instituted a statewide 911 system to dispatch emergency services 24 hours daily. To contact the Vermont State Police Headquarters for other matters, call 802-244-8727.

AGRICULTURAL HERITAGE

Vermont farms contribute to both the pastoral quality of the landscape and the traveler's dining pleasure. Dairy products are a mainstay of Vermont's agricultural economy, with maple syrup, apples, plant nurseries, livestock, honey, vegetables and fruits also making significant contributions.



Weekend farmers' markets are held in communities throughout the state from early summer to mid-autumn. Farm stands dot the roadsides throughout the state as well.

The Vermont Department of Agriculture provides information about picking your own fruit and vegetables in season, perennial and display gardens, these companies, Christmas tree farms, and a pamphlet on sugarhouses listing where visitors can observe the sugaring process and buy maple products.

NATURAL HERITAGE

Rural traditions and pastoral landscapes are cherished by Vermonters, who have legislated a billboard-free highway system and programs to reduce roadside litter. Travelers are invited to use this map for exploring the low-traffic byways of Vermont, as well as visiting the Green Mountain State's many attractions.

Outdoor recreation is a vital part of the Vermont experience, whether a leisurely stroll along a country lane, or a week's trek of the Long Trail. Camping, fishing, biking, boating, swimming, golf, and tennis are but a few of the warm weather activities readily accessible in Vermont.

CULTURAL HERITAGE

Vermont is blessed with an abundance of historic properties, districts, and landmarks, as well as a wide variety of museums and lively arts centers that reflect the diversity and special character of life in the Green Mountain State.

The historic downtown areas of Vermont's cities and towns are a vital part of community life. Vermont has preserved the viability of downtown centers through a wide variety of ways.

BOATING & CANOEING

In addition to more than 200 miles of shoreline along Lake Champlain, Vermont has more than 400 lakes and ponds and several hundred miles of navigable rivers. Boating of all kinds is popular along New England's West Coast and on the state's larger lakes.

HUNTING

The Vermont Guide to Hunting, Fishing and Trapping Lists is available from the Vermont Fish and Wildlife Dept., Waterbury VT 05676. www.nvstate.vt.us/fw/whome

Green Mountain National Forest

Opportunities for hunting large and small game are also available on Green Mountain National Forest Lands. Hunting is not allowed within the developed recreation areas listed in the National Forest section on the chart at right.

SEASONS

Deer
Bow & Arrow Season - Begins second Saturday in October, one-half hour before sunrise to one-half hour after sunset, for 16 consecutive days and for the nine consecutive days beginning the next Saturday following the closure of the regular firearms season. Special license required.

Other Game Animals

Black Bear - Determined annually. Only one bear per calendar year per person. Bears must be tagged immediately and reported within 48 hours.
Hare & Rabbit - Last Sat. in Sept.-second Sun. in March, inclusive.
Gray Squirrel - Last Sat. in Sept.-Dec. 31.

Game Birds

Partridge (Ruffed Grouse) - Last Sat. in Sept.-Dec. 31. Limit: 4 daily; 8 in possession.
Wild Turkey - Spring and fall seasons.
Hunting is allowed on Sundays

Licenses

Hunters applying for a Vermont license for the first time must show a previous or current license from any state or province, or present a valid certificate showing completion of approved hunter safety course. Licenses are valid for the calendar year. Applications are available at most Town or City Clerks' Offices, or by writing the Fish and Wildlife Dept., Fees for 2000:

Table with 2 columns: License Type and Fee. Includes Resident Hunting (\$14.00), Resident Bow & Arrow (\$20.00), Resident Turkey (\$15.00), etc.

Private Campgrounds

Table with 4 columns: Map Grid, RMO, Campground, Phone. Lists various private campgrounds across Vermont.

Green Mountain National Forest

Over 350,000 acres of the Green Mountains are managed by the U.S. Forest Service. Campsites are available at six areas listed on the chart at the right. For details, call or write: Forest Supervisor, Green Mountain National Forest, 231 North Main, Rutland VT 05701. Tel: 802-747-6700, TDD 802-747-6265. www.fs.fed.us/r9/gmfl

Primitive Campings

Camping in remote areas, away from managed campgrounds, is regulated on both state and federal land in Vermont. Many remote areas of state land are available for backpacking, but hikers and campers are expected to carry out all refuse.

PUBLIC RECREATION AREAS

Vermont is one of the only places left in age of destination travel where touring is both practical and pleasurable. Even if your vacation is based at a destination resort, Vermont's small size invites exploration.

Over the years, it's been called "back-roading" or "shunpiking." The idea is to depart the highway, take four-lane highways and become immersed in the countryside and small villages. Vermont's scenic landscapes, picturesque villages, and plentiful history are ideally suited to many styles of touring, by car, motorcycle, bicycle, motorcoach, canoe, horseback, or on foot.

Facilities table with columns for various recreation facilities like Boating & Boat Rentals, For Campers Only, Big Game, Water Falls, etc.

Ferry Crossings

Adult passenger ferries operate across Lake Champlain from four landings in Vermont. The northernmost of these, running between Grand Isle, Vt. (C-4) and Cumberland Head, N.Y., operates year-round. The Burlington, Vt. (C-6) to Port Kent, N.Y., operates mid-May through late October, and the Charlotte, Vt. (C-7) to Essex, N.Y., operates April (opening date is ice conditions) through November.

SUMMER AND FALL RECREATION

Bicycling
Vermont's scenic roads are renowned for bicycle touring. Relatively low volumes of traffic and minimal roadside litter have also been factors in attracting cyclists to the Green Mountains.

Golf

Rolling terrain, abundant rainfall and moderate summer temperatures combine to make Vermont's golf courses challenging, lush and scenic throughout the season. The 67 courses are indicated by the G symbol on the map side.

Hiking

Two major hiking trails run along the spine of the Green Mountains. The Appalachian Trail and the Long Trail follow the same route from the state's southern border to the Shureburne Pass (E-11), where the Appalachian Trail turns east and the Long Trail continues north, following the heights of the Green Mountain range to the Canadian border.

WINTER RECREATION

Alpine Skiing and Snowboarding
Within her relatively small geographic area, Vermont has 21 alpine ski areas - by far the greatest concentration of ski facilities anywhere in the state of the United States.

Cross Country Skiing and Snowshoeing

Vermont's 47 cross-country ski areas and trails provide a wide variety of terrain, trails, tracks and skating lanes. The X-C symbol on this map indicates areas where ski touring facilities are available rather than specific centers. A growing number of residents of other states must register their non-resident gear, contact VAST, PO Box 839, Montpelier VT 05601. Tel: 802-229-0005. www.vtvast.org

Snowmobiling

A network of more than 5,000 miles of marked, groomed snowmobile trails criss-crosses Vermont. These trails have been built and maintained through the cooperative efforts of the Vermont Association of Snow Travelers (VAST) and community snowmobiling clubs. Residents of other states must register their non-resident gear, contact VAST, PO Box 839, Montpelier VT 05601. Tel: 802-229-0005. www.vtvast.org

VERMONT MAKES IT SPECIAL

Vermont products are world famous for expert Yankee craftsmanship, beauty, and attention to detail. Market Vermont's mission is to promote, strengthen, and capitalize on Vermont's reputation for high quality products and services characterized by excellence in workmanship, service and value.

WATCHABLE WILDLIFE

From the rugged Green Mountains to pristine Lake Champlain and nearby Missisquoi National Wildlife Refuge in Swanton to the unspoiled wilderness of remote Essex County, Vermont is rich with a variety of wildlife.

Table with 2 columns: Species and Count. Lists various wildlife species and their counts.

Printed on recycled paper