

- 
- 
- 
- 
- 
- 
- 
- 
- 
- 
- 
- 
- 
- 
- 

THESE AND ALL OTHER TRAFFIC CONTROL SIGNS YOU WILL OBSERVE ALONG VERMONT HIGHWAYS CONFORM TO NATIONAL STANDARDS

**HIGHWAY SPEED LIMITS IN VERMONT**  
 Minimum 55  
 Maximum 65  
 All Other Maximum 50

The Vermont State Police are at your service to aid and protect you and your family while traveling in Vermont. Please observe all traffic laws and driving practices.

**ST. ALBANS**  
 New Center St  
 Main St  
 North St  
 South St  
 West St

**BURLINGTON**  
 New Center St  
 Main St  
 North St  
 South St  
 West St

**LOCATION INDEX**  
 TO DISTRICTS AND TOWNS

1	2	3	4	5	6	7	8	9	10	11	12	13	14	15	16	17	18
A	B	C	D	E	F	G	H	I	J	K	L	M	N	O	P	Q	R

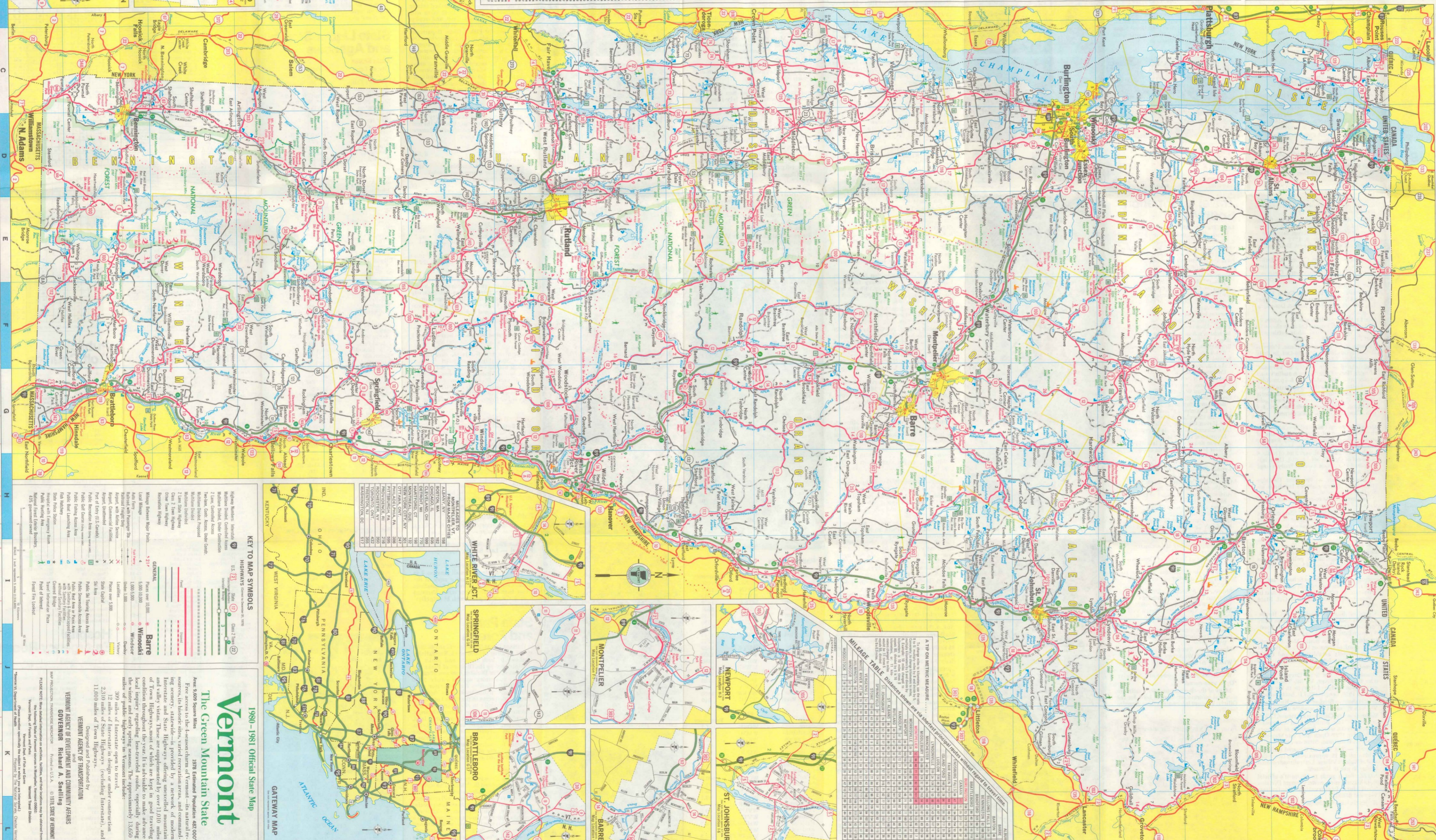
**LOCATION INDEX**  
 TO DISTRICTS AND TOWNS

1	2	3	4	5	6	7	8	9	10	11	12	13	14	15	16	17	18
A	B	C	D	E	F	G	H	I	J	K	L	M	N	O	P	Q	R

**NEW LOCATION STREET GRID**  
 DISTRICTS AND TOWNS

**RUTLAND**  
 Main St  
 North St  
 South St  
 West St

**BENNINGTON**  
 Main St  
 North St  
 South St  
 West St



**MILEAGE TABLE**  
 Distances between major Vermont cities and other regional centers.

From	To	Distance (mi)
Burlington	Montpelier	54
Burlington	St. Albans	30
Burlington	Brattleboro	100
Burlington	White River Jct.	110
Burlington	Springfield	120
Burlington	Newport	130
Burlington	St. Johnsbury	140
Burlington	Albany	150
Burlington	Windsor	160
Burlington	Winooski	170
Burlington	Wilmington	180
Burlington	Waterbury	190
Burlington	Warren	200
Burlington	Waitsfield	210
Burlington	Westford	220
Burlington	Weston	230
Burlington	Whitingham	240
Burlington	Whitcomb	250
Burlington	Whitcomb	260
Burlington	Whitcomb	270
Burlington	Whitcomb	280
Burlington	Whitcomb	290
Burlington	Whitcomb	300

**KEY TO MAP SYMBOLS**

**1980-1981 Official State Map**

**The Green Mountain State**  
 1979 Estimated Population 487,000  
 Area 9,609 square miles

Free access to the 1-60000 scale map of Vermont—the natural resource, state-wide—is provided by a network of modern interstate and state highways offering unexcelled convenience and security. The Vermont State Police are at your service to aid and protect you and your family while traveling in Vermont. Please observe all traffic laws and driving practices.

**VERMONT AGENCY OF TRANSPORTATION**  
**VERMONT GOVERNOR RICHARD A. SMELLIE**  
 VERMONT STATE OF VERMONT