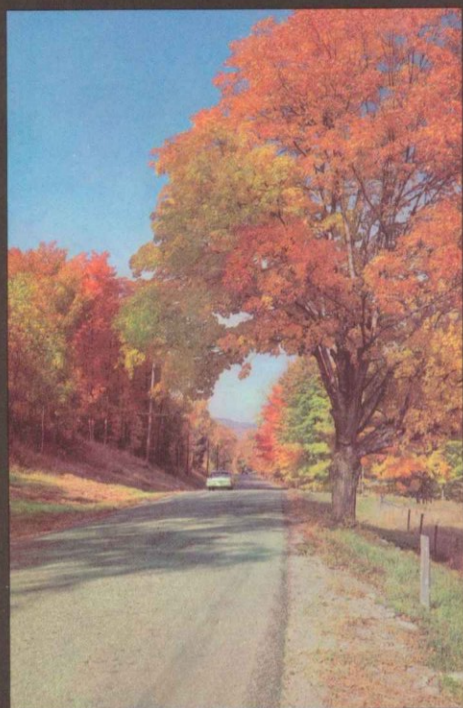


MAP of Vermont 1966

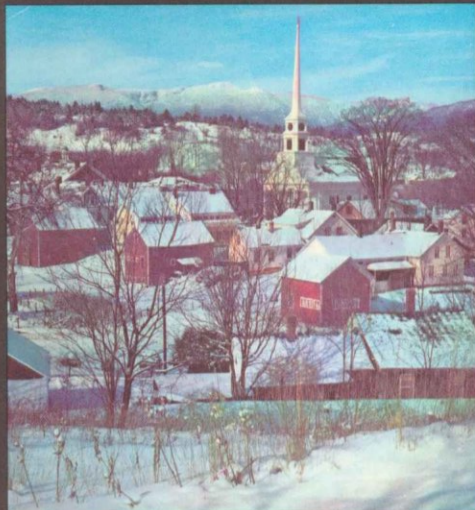
Enjoy Vermont the Four-Season Recreation State

VERMONT INFORMATION BOOTHS

- | | |
|---------------|------------------|
| Albany | Middlebury |
| Barre | Montpelier |
| Bellows Falls | Newport |
| Bennington | Richford |
| Bradford | Rutland |
| Brandon | St. Albans |
| Brattleboro | St. Johnsbury |
| Bristol | Swanton |
| Burlington | Vergennes |
| Chester | Waterbury |
| South Hero | Wells River |
| Island Pond | White River Jct. |
| Manchester | Woodstock |



Published by the Vermont Department of Highways and the Vermont Development Department Montpelier • Vermont

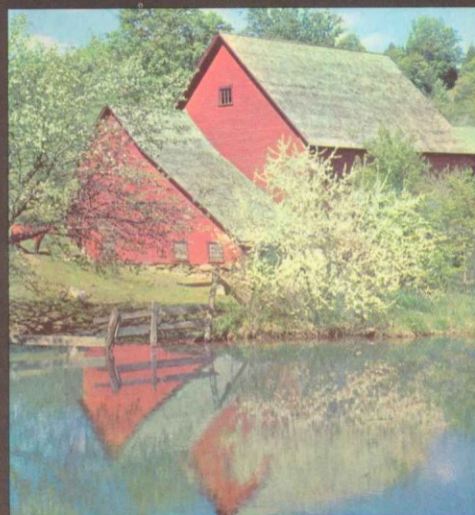
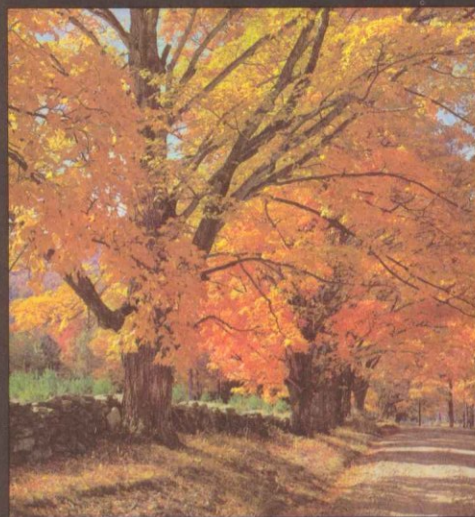


WINTER

Vermont winters are comfortable, though crisp and invigorating. Cold snaps are brief and greatly tempered by the low humidity of a non-coastal state. Immaculate white landscapes, snow-covered villages, and gleaming modern ski areas are always accessible, due to a system of highway plowing and sanding superior to most states.

FALL

Ablaze with color, autumn is a particular season in Vermont. Brilliant reds, golden yellows and regal purple replace summer greens. Soil, climate and trees combine to produce the annual foliage spectacle in Vermont, unsurpassed in brilliance anywhere. From mid-September to mid-October the Vermont landscape is vividly attired.

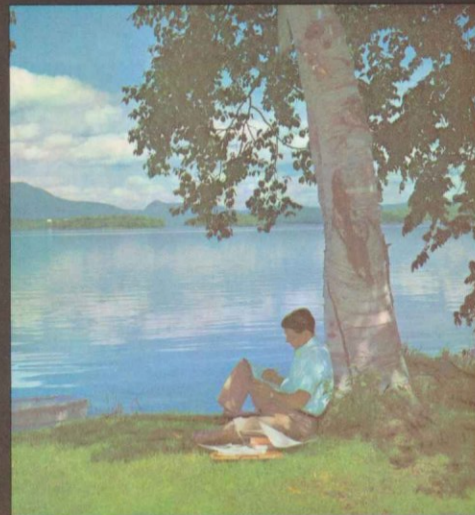


SPRING

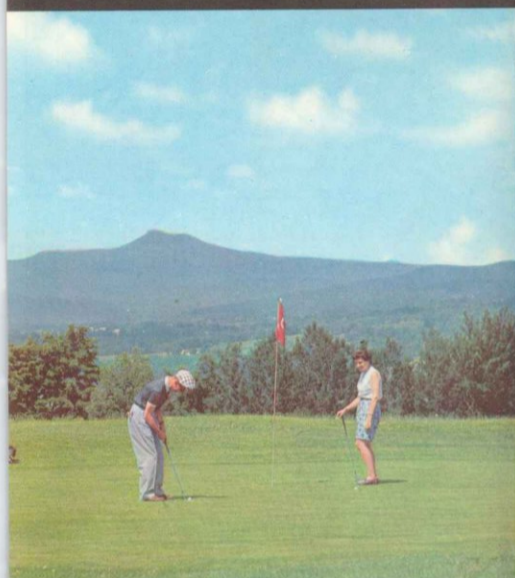
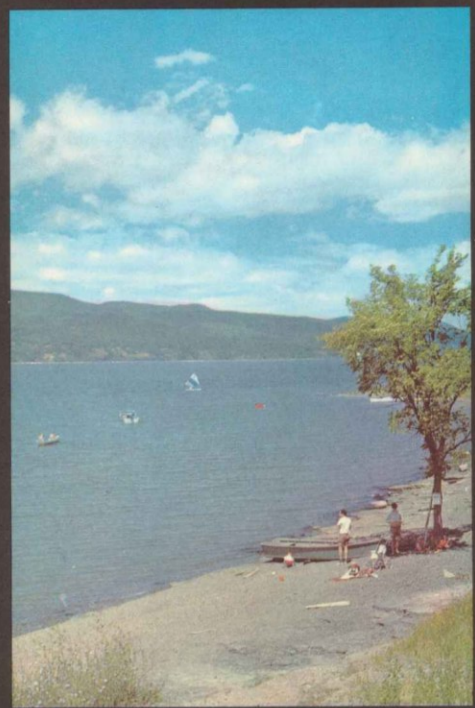
Spring in Vermont arrives gently, with first thaws ushering in the sugaring season. Next, green shoots and buds appear on elms and maples. Late April opens fishing season and apple blossoms burst forth exuberantly in mid-May. In June come a multitude of wildflowers, lilies and the smell of rich brown earth turned for planting.

SUMMER

Sparkling green and bursting with fun, Vermont lets visitors enjoy life and activity through the long summer days. Rolling hills and cool mountain lakes are inviting. Well-paved roads wend gracefully toward sun-filled horizons. Scenic views are exciting, such as mountain vistas, old stone walls, or the sun setting across some still blue waters.



Bienvenu au Vermont



Golf

Vermont's rolling countryside is well adapted for its sporty golf courses. Cool, breeze-swept country clubs are seldom crowded and players can usually set their own pace. There are over 40 courses in the state, with more than a dozen of 18 holes. They range from championship calibre to excellent layouts. New courses are being added and established ones growing in size. They are conveniently located, within short driving distances from any section of the state.

VERMONT offers a special kind of life in a surprising and refreshing way. Almost without exception, newcomers remark on its quality, but few can define it. It isn't just the scenery, or the people, or that Vermont still retains a sense of the old values and the old truths.

The difference lies in something more. Partly because of its people, its heritage, and its natural beauty, Vermont holds an aura of ageless serenity coupled with never-failing springs of vitality.

Here is a place to put down roots — yet here is a place to be active. Maturity and picturesque villages go hand in hand with youthful vigor and progress.



Fishing and Hunting

Over 400 lakes, countless mountain streams and brooks offer challenging sport in any season. Species include trout, landlocked salmon, bass, pike, pickerel. Ice fishing is popular in winter. Vermont's annual deer kill is over 11,000. A bow season precedes the regular deer season in November. Bird season in fall includes grouse, woodcock and excellent duck hunting. Other game: bear, fox, rabbits, raccoon.

THE 14th state to enter the Union, Vermont is rich in heritage, known for the rugged independence of its people and the skilled work of its craftsmen. This New England state contains some of the most modern and progressive manufacturing plants in the nation.

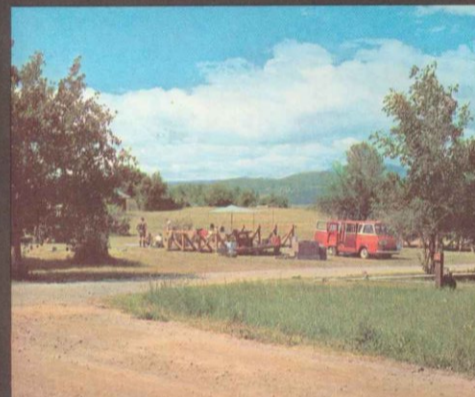
Its well-defined four seasons make it a natural year-round vacationland. In summer its mountains, lakes and parks present outdoor recreation facilities; fall is the colorfully scenic season and winter brings thrills at modern ski resorts.

A leader in agriculture, Vermont farms are worked by the most scientific and mechanized methods. Vermont is indeed a special kind of life for all to enjoy.



Winter Sports

Forty-two ski areas make Vermont the leading ski state of the East. The capacity of its up hill facilities are greater than other Eastern states. Many new areas have opened in recent years, others are planned. Modern ski lifts accommodate thousands from mid-December into April. The most dependable snow conditions in the East are found along the Green Mountain Range where annual average snowfall reaches 120 inches. Ski reports are carried by most media and many travel centers.

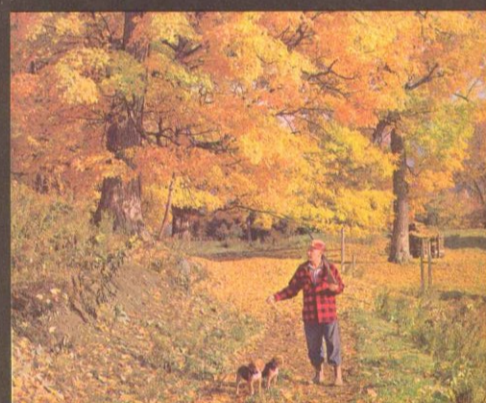


Camping and Hiking

Vermont's 62 state parks and forests total over 96,000 acres. Nearly one-half provide camping sites. The 255-mile Long Trail offers short walks or overnight hikes with shelters available.

Agriculture

Vermont leads New England's dairy production. Its poultry business ranks high. Apples, potatoes and hay are major crops.

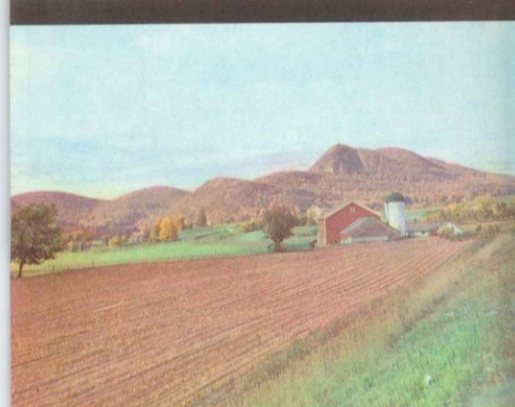


Water Sports

Vermont lakes provide for all aquatic sports. Boating varies from white water canoes, to large yachts cruising Lake Champlain. Many boat launching sites are available.

Maple Syrup

Maple syrup is Vermont's most distinctive agricultural product. "100% Pure Vermont Maple Syrup" is nationally known.



Free VERMONT publications may be obtained from VERMONT DEVELOPMENT DEPARTMENT 200 State Office Bldg., Montpelier, Vermont • Phone 223-2311

Brochures cover accommodations, summer-winter rentals, skiing, state parks, events, hunting, fishing, rural real estate and others including subscription blanks for "Vermont Life," the official state magazine, and free film list.

You are welcome to visit our three regional offices

- | | | |
|---|---|---|
| Vermont Information Center
New York, N. Y. • 1268 Avenue of the Americas (Next to Radio City Music Hall) • Phone CO 5-5818 | Montreal, Canada
Laurentien Hotel (On Dominion Square) • Phone UN 1-0195 | Cleveland, Ohio • 2051 E. 14th St. • Phone 781-1840 |
|---|---|---|



Horseback Riding

Each year riding enthusiasts explore Vermont's picturesque horse trails and take part in the varied equestrian activities. Horse shows are popular, many camps feature riding instruction.

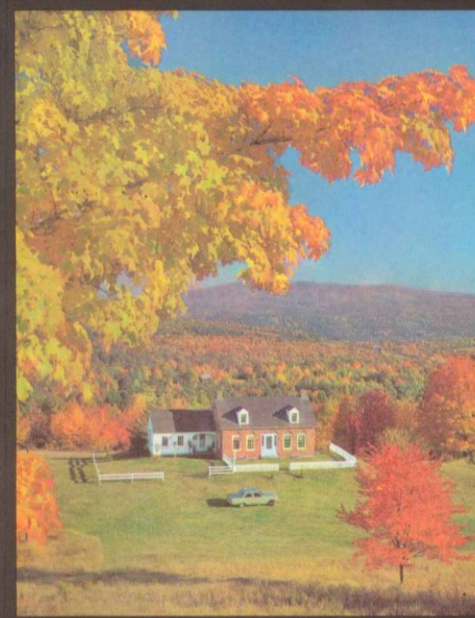
Accommodations

Summer and winter accommodations range from luxury resorts to inexpensive tourist homes. Motels and village inns are popular.



Industry and Plant Location

Vermont industries range from world-famous plants to small artisan shops. The highly skilled craftsmen are easily adaptable. Industry enjoys a favorable business climate. Plant site inquiries are handled confidentially by the Development Department and result in immediate personal call and follow-up. All data on manufacturing cost comparison is furnished and 100% financing for proposed plants is arranged. For information, contact Industrial Director, Development Dept., Montpelier, Vt.



Photography and Art

Photographers and artists find an infinite variety of subjects in any season. Vermont's landscapes provide ideal settings.

Residents

Property values for part-time or permanent homes are surprisingly low when compared to other regions. Vermont is accessible to all large cities in eastern United States and Canada.

See These Unique Vermont Attractions of Special Interest



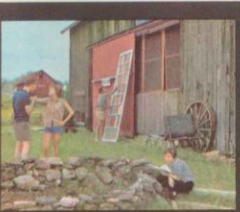
Summer Ski Lifts

Ski lifts which provide uphill facilities for skiers in winter have been developed into a popular summer attraction as well. Presently, at six Vermont areas during the summer, comfortable chairlifts whisk visitors to the tops of mountains where incredibly beautiful panoramic views meet the eye and present photographic angles unattainable in any other way.



Crafts and Antiques

Vermont native crafts are an important part of the state's economy. Skilled designers and craftsmen in woodworking, ceramics, weaving and other products are numerous. Many welcome visitors to view their handiwork. Antiques are found in many shops and at country auctions which are a popular pastime through the various seasons.



Summer Theatre

Summer playhouses offer a variety of entertainment to visitors and residents alike. Each year, established theatre groups, mostly with professional talent, present programs in drama, comedy and Shakespeare in at least a half dozen communities around Vermont. Performances begin in June and continue to September. Some run into the Fall.



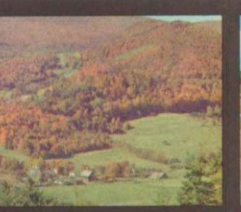
Art Shows

Art shows, with their colorful presentations, are popular in summer and fall. Many towns have year-round exhibits, other areas conduct special shows with both local and regionally known artists displaying their works. Sidewalk art shows offer unique, outdoor exhibitions. Southern Vermont Art Center and Bundy Art Gallery are among notable exhibits.



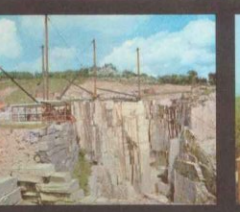
State Capitol

Widely admired for its architectural simplicity, the Vermont Capitol is superbly situated behind a large sweeping lawn and against a forested hill. The present structure is the third since Montpelier was chosen as the capital in 1805. Walls are of solid granite, floors and ornaments of marble and slate, and carvings are in wood—all Vermont products.



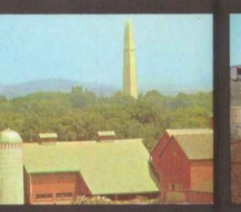
Coolidge Homestead

In a simple Vermont home, located in the small village of Plymouth Notch, is the room where Calvin Coolidge, on August 3, 1923, was administered the oath of office as President of the United States by his father, a Vermont notary public. The entire house, restored exactly as it was on that historic night is open to the public during summer and fall.



Granite and Marble

In the quarrying and production of granite, Vermont leads the country, with the chief granite center around Barre. Top quality granite is quarried and converted into monuments or building stone. Guided tours between late May and mid-October. The famous mineral, marble, is seen at Proctor in a permanent exhibit open late May to late October.



Battle Monument

On August 16, 1777, British forces sent to seize supplies at Bennington were turned back by General John Stark and Vermont's Col. Seth Warner. This 306-ft. commemorative shaft was dedicated in 1891. In 1953 it was taken over, restored and an elevator installed by the Vermont Historic Sites Commission which now administers it for the State. Open March-November.



Green Mountain Park

Viewed from the mountains surrounding the track, Green Mountain Park near Pownal is without doubt one of the most scenic racing plants in the entire nation. In all, it covers 125 acres with parking facilities for 9,000 automobiles. Harness racing in the spring and thoroughbred racing in the summer and fall are featured on the 13/15 of a mile oval.



Shelburne Museum

A few miles south of Burlington in the town of Shelburne is the Shelburne Museum, a unique collection of fine old New England buildings housing four centuries of varied treasures depicting early life in Vermont and New England. Fascinating displays in more than 30 buildings make the museum a delight to both adults and children. Open from May 25 to October 20.