

INDEX TO CITIES, TOWNS AND VILLAGES. A grid-based index listing locations across Vermont with their corresponding map grid coordinates (e.g., 12, 11, 10, 9, 8, 7, 6, 5, 4, 3, 2, 1).

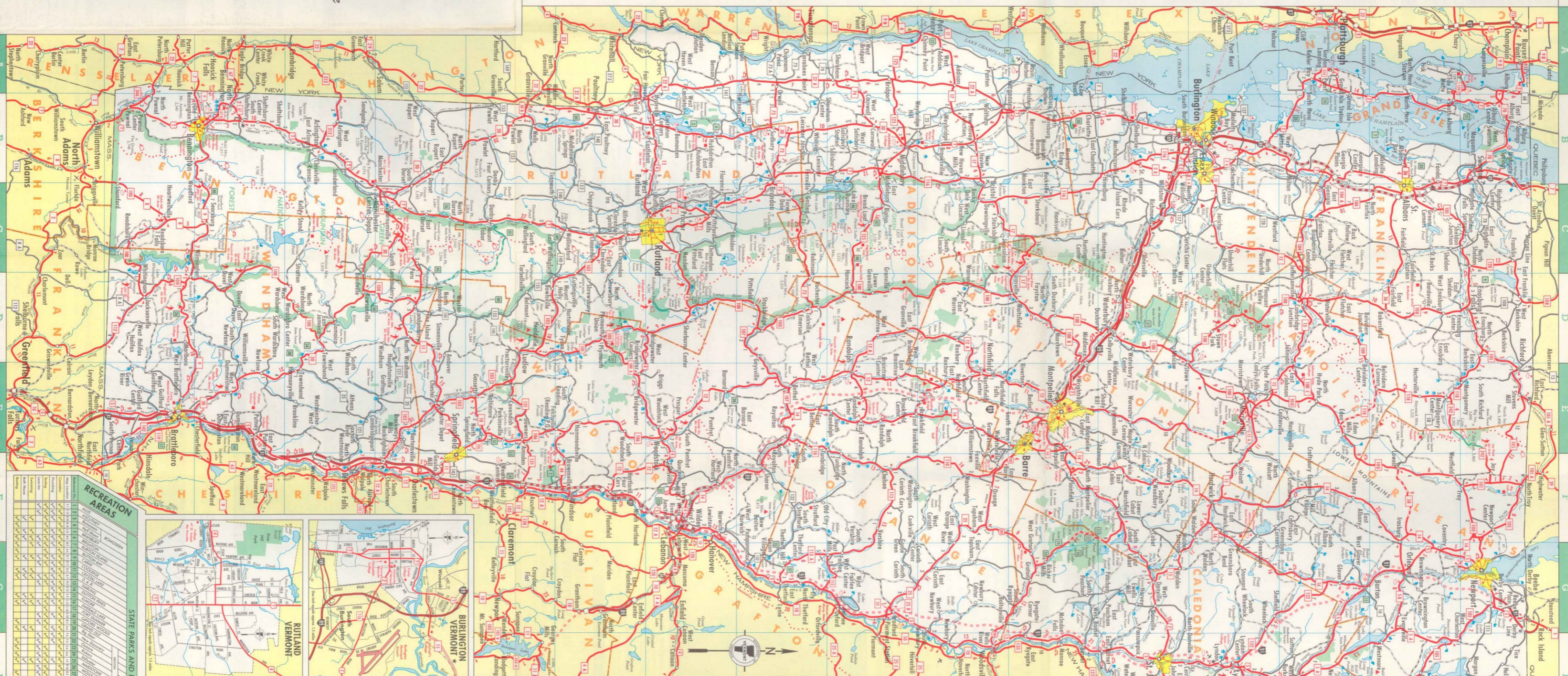
MAP of Vermont 1966

The Green Mountain State

THE 17,761 MILES OF VERMONT'S EXCELLENT HIGHWAY SYSTEMS INCLUDE:
108 miles of completed Interstate highways,
213 miles of Federal-aid highways proposed or under construction,
2,114 miles of scenic, new and State highways,
11,539 miles of heavily traveled roads, including the national network of trunk roads within short travel distances from major state highways,
4-season recreation areas and busy community centers.

This map shows all Interstates, State and State Aid Highways. Certain Town highways and recreation roads are also shown to indicate access to diverse points of interest. Many more town and other roads exist, but conditions may vary seasonally. It is therefore recommended that the motorist inquire locally before traveling roads over high passes or roads not appearing on the map. A price list of various other detailed maps may be obtained from the Vermont Department of Highways, Montpelier, Vermont, 05602.

Published by
VERMONT DEPARTMENT OF HIGHWAYS
and
VERMONT DEVELOPMENT DEPARTMENT
Prepared by Diversified Map Corp.,
St. Louis, Missouri
© 1966, STATE OF VERMONT



KEY TO MAP SYMBOLS

VERMONT'S CONNECT TO DECEMBER 31, 1965

Interstate Highway Number: State Aid Highway Number:

Multilane Divided Access Fully Controlled
Multilane Divided Under Construction (Freeway Type)
2 Lane Access Fully Controlled
Proposed Highway (Freeway Type Only)
Multilane Divided State Highway

GENERAL

State Aid Highway (Secondary Road)
State Aid Highway (Local Road)
Recreation Highway (Local Road)

Intersecting Right-of-Way:
Left-of-Way:

Other Symbols:

RECREATION AREAS

Area	State	Access	Season	Facilities
Adirondack Park	VT	Open	Year-round	Trails, Camps, etc.
Green Mountains	VT	Open	Year-round	Trails, Camps, etc.
North Woods	VT	Open	Year-round	Trails, Camps, etc.
White Mountains	VT	Open	Year-round	Trails, Camps, etc.
...

STATE PARKS AND FORESTS

Park/Forest	Location	Access	Season	Facilities
Adirondack Park	North	Open	Year-round	Trails, Camps, etc.
Green Mountains	Central	Open	Year-round	Trails, Camps, etc.
North Woods	North	Open	Year-round	Trails, Camps, etc.
White Mountains	North	Open	Year-round	Trails, Camps, etc.
...