

VERMONT INDEX table listing towns and their corresponding map grid coordinates (e.g., 1A, 2B, 3C).

The Green Mountain State Vermont

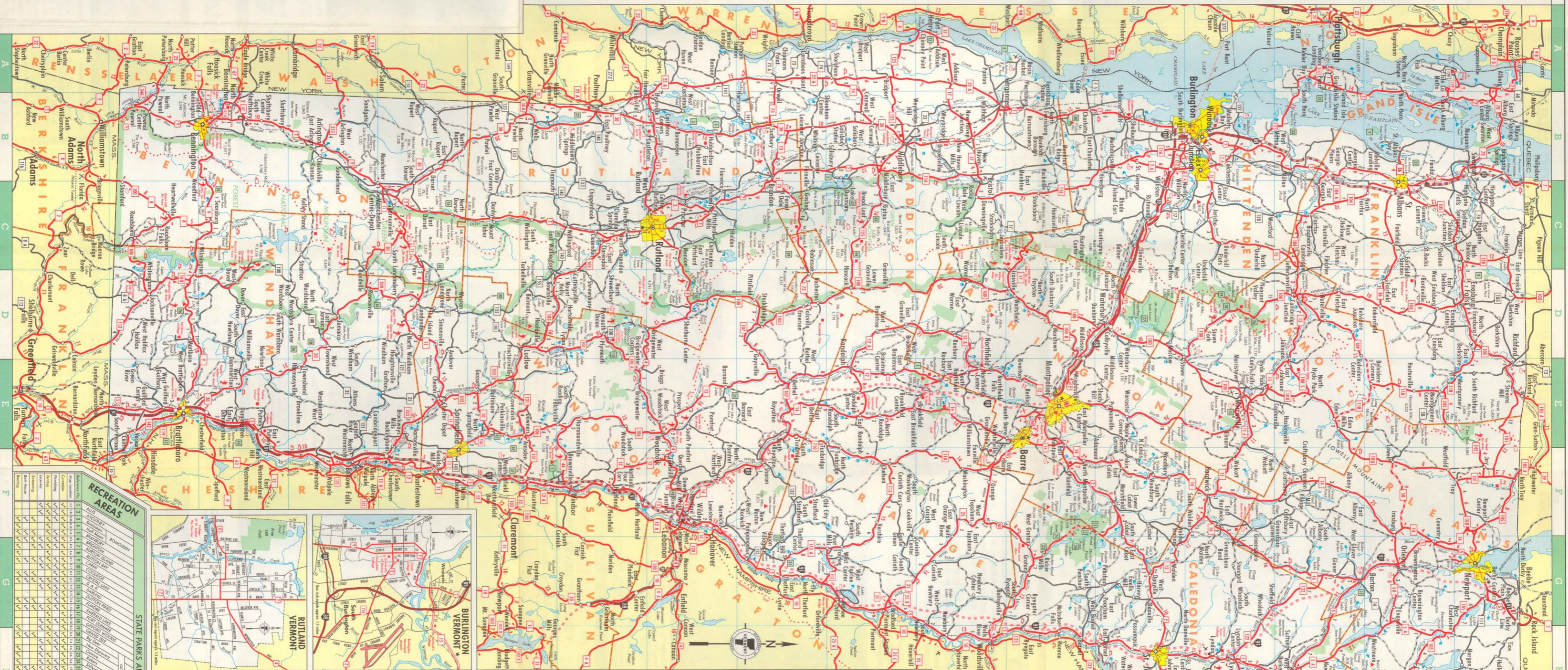
OFFICIAL HIGHWAY AND TOURING MAP OF 1965

THE 13,959 MILES OF VERMONT'S EXCELLENT HIGHWAY SYSTEM INCLUDE:

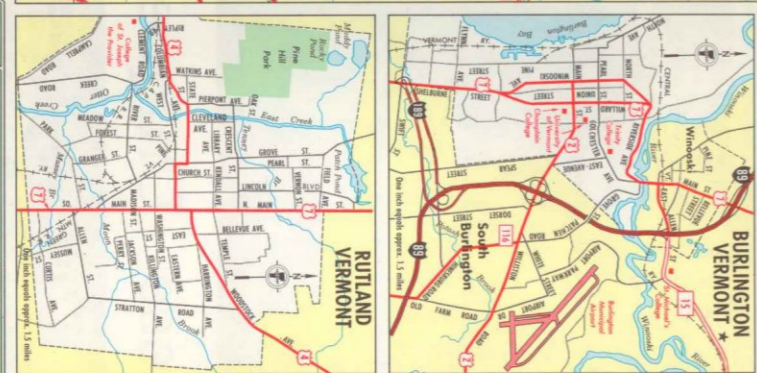
- 87 miles of completed interstate highways, 234 miles of interstate highways proposed or under construction, 2,070 miles of state, year-round state highways, 11,586 miles of locally controlled roads, retaining the natural beauty of rural sections within short travel distances from major state highways, 4-season recreation areas and busy community centers.

This map shows all interstates, state and state aid highways. Certain state highways and sections of interstates... are shown in red and alternate color. It is therefore recommended that the motorist inquire locally before traveling roads over high passes or detailed maps may be obtained from the Vermont Department of Highways, Montpelier, Vermont, 05602.

Published by VERMONT DEPARTMENT OF HIGHWAYS and VERMONT DEVELOPMENT DEPARTMENT. Prepared by Diversified Map Corp., St. Louis, Missouri. © 1965, STATE OF VERMONT.



RECREATION AREAS table listing various parks and forests with their locations and features.



KEY TO MAP SYMBOLS section containing symbols for state highways, interstates, and other road types, along with a table of highway speed limits.

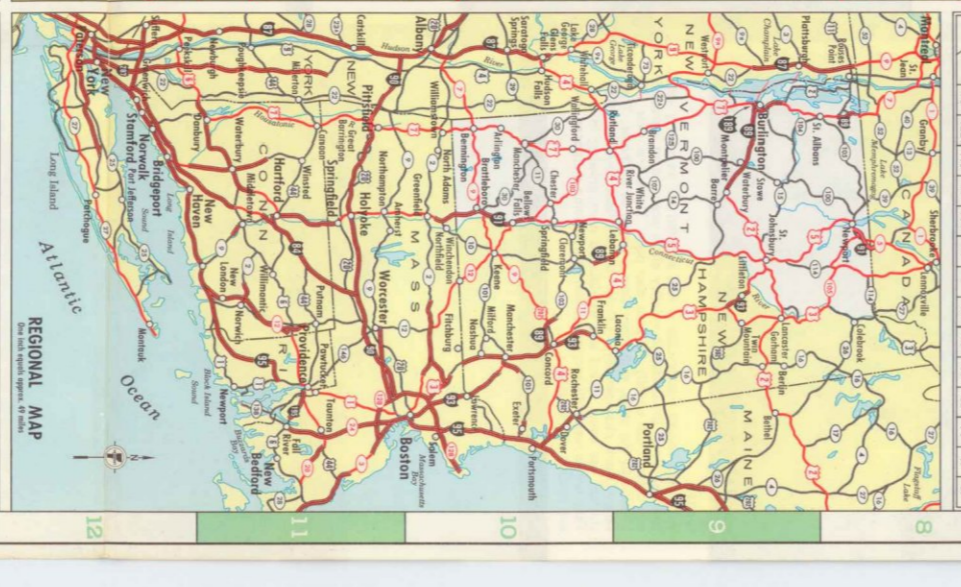


Table showing distances between major Vermont cities: Burlington, Montpelier, Rutland, and St. Albans.