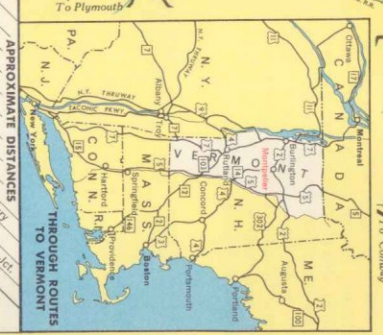
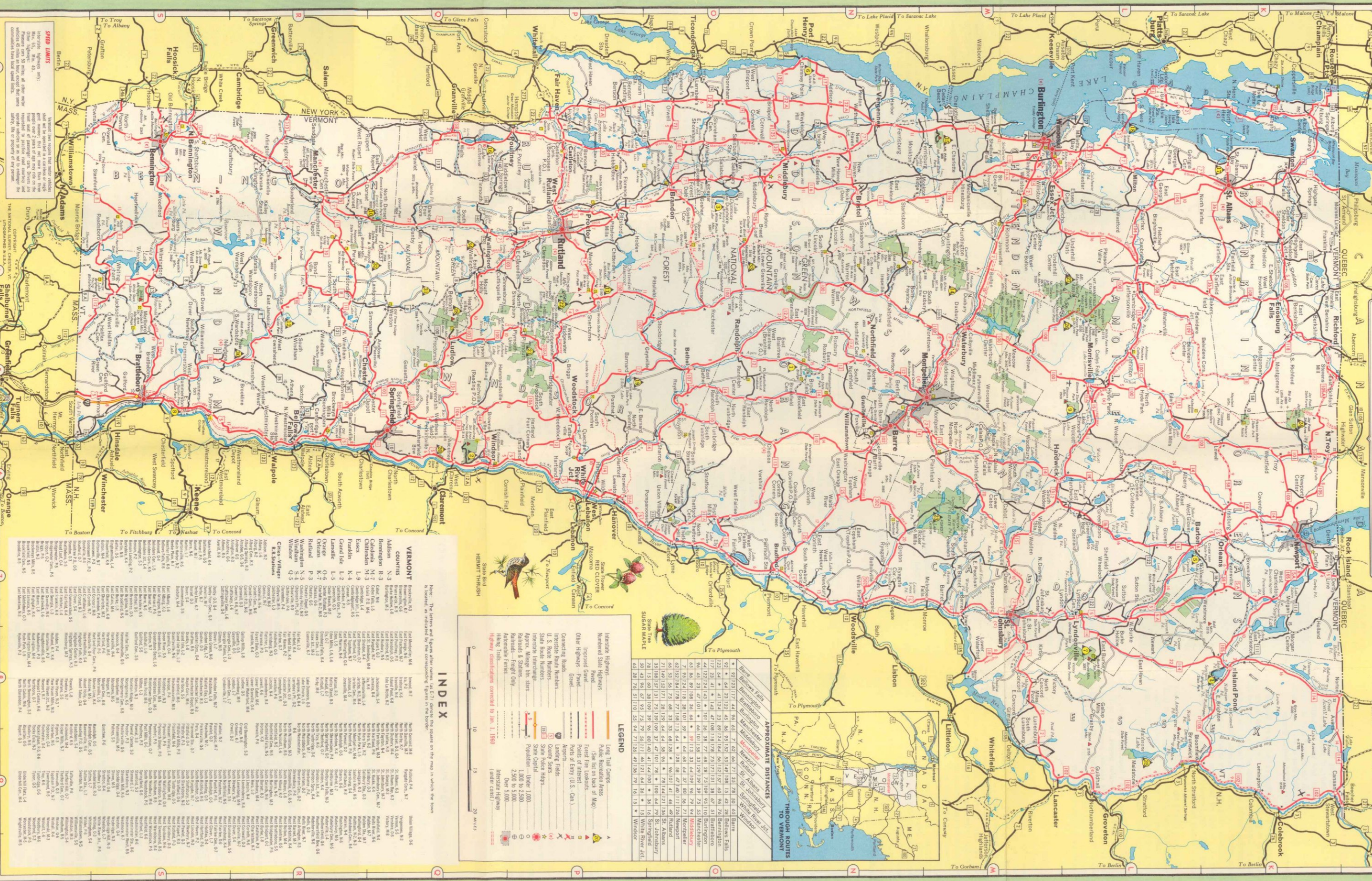




# A Map of VERMONT

The Mountain State

Issued by  
VERMONT DEPARTMENT OF HIGHWAYS



### APPROXIMATE DISTANCES THROUGH ROUTES TO VERMONT

From	Distance (Miles)
Boston	127
New York City	147
Philadelphia	207
Washington, D.C.	247
Richmond, Va.	267
Charlotte, N.C.	327
Atlanta, Ga.	387
Mobile, Ala.	447
New Orleans, La.	507
St. Louis, Mo.	567
Chicago, Ill.	627
St. Paul, Minn.	687
Des Moines, Ia.	747
Indianapolis, Ind.	807
Columbus, Ohio	867
Cleveland, Ohio	927
Pittsburgh, Pa.	987
Philadelphia, Pa.	1047
New York City, N.Y.	1107
Boston, Mass.	1167
Washington, D.C.	1227
Richmond, Va.	1287
Charlotte, N.C.	1347
Atlanta, Ga.	1407
Mobile, Ala.	1467
New Orleans, La.	1527
St. Louis, Mo.	1587
Chicago, Ill.	1647
St. Paul, Minn.	1707
Des Moines, Ia.	1767
Indianapolis, Ind.	1827
Columbus, Ohio	1887
Cleveland, Ohio	1947
Pittsburgh, Pa.	2007
Philadelphia, Pa.	2067
New York City, N.Y.	2127
Boston, Mass.	2187
Washington, D.C.	2247
Richmond, Va.	2307
Charlotte, N.C.	2367
Atlanta, Ga.	2427
Mobile, Ala.	2487
New Orleans, La.	2547
St. Louis, Mo.	2607
Chicago, Ill.	2667
St. Paul, Minn.	2727
Des Moines, Ia.	2787
Indianapolis, Ind.	2847
Columbus, Ohio	2907
Cleveland, Ohio	2967
Pittsburgh, Pa.	3027
Philadelphia, Pa.	3087
New York City, N.Y.	3147
Boston, Mass.	3207
Washington, D.C.	3267
Richmond, Va.	3327
Charlotte, N.C.	3387
Atlanta, Ga.	3447
Mobile, Ala.	3507
New Orleans, La.	3567
St. Louis, Mo.	3627
Chicago, Ill.	3687
St. Paul, Minn.	3747
Des Moines, Ia.	3807
Indianapolis, Ind.	3867
Columbus, Ohio	3927
Cleveland, Ohio	3987
Pittsburgh, Pa.	4047
Philadelphia, Pa.	4107
New York City, N.Y.	4167
Boston, Mass.	4227
Washington, D.C.	4287
Richmond, Va.	4347
Charlotte, N.C.	4407
Atlanta, Ga.	4467
Mobile, Ala.	4527
New Orleans, La.	4587
St. Louis, Mo.	4647
Chicago, Ill.	4707
St. Paul, Minn.	4767
Des Moines, Ia.	4827
Indianapolis, Ind.	4887
Columbus, Ohio	4947
Cleveland, Ohio	5007
Pittsburgh, Pa.	5067
Philadelphia, Pa.	5127
New York City, N.Y.	5187
Boston, Mass.	5247
Washington, D.C.	5307
Richmond, Va.	5367
Charlotte, N.C.	5427
Atlanta, Ga.	5487
Mobile, Ala.	5547
New Orleans, La.	5607
St. Louis, Mo.	5667
Chicago, Ill.	5727
St. Paul, Minn.	5787
Des Moines, Ia.	5847
Indianapolis, Ind.	5907
Columbus, Ohio	5967
Cleveland, Ohio	6027
Pittsburgh, Pa.	6087
Philadelphia, Pa.	6147
New York City, N.Y.	6207
Boston, Mass.	6267
Washington, D.C.	6327
Richmond, Va.	6387
Charlotte, N.C.	6447
Atlanta, Ga.	6507
Mobile, Ala.	6567
New Orleans, La.	6627
St. Louis, Mo.	6687
Chicago, Ill.	6747
St. Paul, Minn.	6807
Des Moines, Ia.	6867
Indianapolis, Ind.	6927
Columbus, Ohio	6987
Cleveland, Ohio	7047
Pittsburgh, Pa.	7107
Philadelphia, Pa.	7167
New York City, N.Y.	7227
Boston, Mass.	7287
Washington, D.C.	7347
Richmond, Va.	7407
Charlotte, N.C.	7467
Atlanta, Ga.	7527
Mobile, Ala.	7587
New Orleans, La.	7647
St. Louis, Mo.	7707
Chicago, Ill.	7767
St. Paul, Minn.	7827
Des Moines, Ia.	7887
Indianapolis, Ind.	7947
Columbus, Ohio	8007
Cleveland, Ohio	8067
Pittsburgh, Pa.	8127
Philadelphia, Pa.	8187
New York City, N.Y.	8247
Boston, Mass.	8307
Washington, D.C.	8367
Richmond, Va.	8427
Charlotte, N.C.	8487
Atlanta, Ga.	8547
Mobile, Ala.	8607
New Orleans, La.	8667
St. Louis, Mo.	8727
Chicago, Ill.	8787
St. Paul, Minn.	8847
Des Moines, Ia.	8907
Indianapolis, Ind.	8967
Columbus, Ohio	9027
Cleveland, Ohio	9087
Pittsburgh, Pa.	9147
Philadelphia, Pa.	9207
New York City, N.Y.	9267
Boston, Mass.	9327
Washington, D.C.	9387
Richmond, Va.	9447
Charlotte, N.C.	9507
Atlanta, Ga.	9567
Mobile, Ala.	9627
New Orleans, La.	9687
St. Louis, Mo.	9747
Chicago, Ill.	9807
St. Paul, Minn.	9867
Des Moines, Ia.	9927
Indianapolis, Ind.	9987
Columbus, Ohio	10047
Cleveland, Ohio	10107
Pittsburgh, Pa.	10167
Philadelphia, Pa.	10227
New York City, N.Y.	10287
Boston, Mass.	10347
Washington, D.C.	10407
Richmond, Va.	10467
Charlotte, N.C.	10527
Atlanta, Ga.	10587
Mobile, Ala.	10647
New Orleans, La.	10707
St. Louis, Mo.	10767
Chicago, Ill.	10827
St. Paul, Minn.	10887
Des Moines, Ia.	10947
Indianapolis, Ind.	11007
Columbus, Ohio	11067
Cleveland, Ohio	11127
Pittsburgh, Pa.	11187
Philadelphia, Pa.	11247
New York City, N.Y.	11307
Boston, Mass.	11367
Washington, D.C.	11427
Richmond, Va.	11487
Charlotte, N.C.	11547
Atlanta, Ga.	11607
Mobile, Ala.	11667
New Orleans, La.	11727
St. Louis, Mo.	11787
Chicago, Ill.	11847
St. Paul, Minn.	11907
Des Moines, Ia.	11967
Indianapolis, Ind.	12027
Columbus, Ohio	12087
Cleveland, Ohio	12147
Pittsburgh, Pa.	12207
Philadelphia, Pa.	12267
New York City, N.Y.	12327
Boston, Mass.	12387
Washington, D.C.	12447
Richmond, Va.	12507
Charlotte, N.C.	12567
Atlanta, Ga.	12627
Mobile, Ala.	12687
New Orleans, La.	12747
St. Louis, Mo.	12807
Chicago, Ill.	12867
St. Paul, Minn.	12927
Des Moines, Ia.	12987
Indianapolis, Ind.	13047
Columbus, Ohio	13107
Cleveland, Ohio	13167
Pittsburgh, Pa.	13227
Philadelphia, Pa.	13287
New York City, N.Y.	13347
Boston, Mass.	13407
Washington, D.C.	13467
Richmond, Va.	13527
Charlotte, N.C.	13587
Atlanta, Ga.	13647
Mobile, Ala.	13707
New Orleans, La.	13767
St. Louis, Mo.	13827
Chicago, Ill.	13887
St. Paul, Minn.	13947
Des Moines, Ia.	14007
Indianapolis, Ind.	14067
Columbus, Ohio	14127
Cleveland, Ohio	14187
Pittsburgh, Pa.	14247
Philadelphia, Pa.	14307
New York City, N.Y.	14367
Boston, Mass.	14427
Washington, D.C.	14487
Richmond, Va.	14547
Charlotte, N.C.	14607
Atlanta, Ga.	14667
Mobile, Ala.	14727
New Orleans, La.	14787
St. Louis, Mo.	14847
Chicago, Ill.	14907
St. Paul, Minn.	14967
Des Moines, Ia.	15027
Indianapolis, Ind.	15087
Columbus, Ohio	15147
Cleveland, Ohio	15207
Pittsburgh, Pa.	15267
Philadelphia, Pa.	15327
New York City, N.Y.	15387
Boston, Mass.	15447
Washington, D.C.	15507
Richmond, Va.	15567
Charlotte, N.C.	15627
Atlanta, Ga.	15687
Mobile, Ala.	15747
New Orleans, La.	15807
St. Louis, Mo.	15867
Chicago, Ill.	15927
St. Paul, Minn.	15987
Des Moines, Ia.	16047
Indianapolis, Ind.	16107
Columbus, Ohio	16167
Cleveland, Ohio	16227
Pittsburgh, Pa.	16287
Philadelphia, Pa.	16347
New York City, N.Y.	16407
Boston, Mass.	16467
Washington, D.C.	16527
Richmond, Va.	16587
Charlotte, N.C.	16647
Atlanta, Ga.	16707
Mobile, Ala.	16767
New Orleans, La.	16827
St. Louis, Mo.	16887
Chicago, Ill.	16947
St. Paul, Minn.	17007
Des Moines, Ia.	17067
Indianapolis, Ind.	17127
Columbus, Ohio	17187
Cleveland, Ohio	17247
Pittsburgh, Pa.	17307
Philadelphia, Pa.	17367
New York City, N.Y.	17427
Boston, Mass.	17487
Washington, D.C.	17547
Richmond, Va.	17607
Charlotte, N.C.	17667
Atlanta, Ga.	17727
Mobile, Ala.	17787
New Orleans, La.	17847
St. Louis, Mo.	17907
Chicago, Ill.	17967
St. Paul, Minn.	18027
Des Moines, Ia.	18087
Indianapolis, Ind.	18147
Columbus, Ohio	18207
Cleveland, Ohio	18267
Pittsburgh, Pa.	18327
Philadelphia, Pa.	18387
New York City, N.Y.	18447
Boston, Mass.	18507
Washington, D.C.	18567
Richmond, Va.	18627
Charlotte, N.C.	18687
Atlanta, Ga.	18747
Mobile, Ala.	18807
New Orleans, La.	18867
St. Louis, Mo.	18927
Chicago, Ill.	18987
St. Paul, Minn.	19047
Des Moines, Ia.	19107
Indianapolis, Ind.	19167
Columbus, Ohio	19227
Cleveland, Ohio	19287
Pittsburgh, Pa.	19347
Philadelphia, Pa.	19407
New York City, N.Y.	19467
Boston, Mass.	19527
Washington, D.C.	19587
Richmond, Va.	19647
Charlotte, N.C.	19707
Atlanta, Ga.	19767
Mobile, Ala.	19827
New Orleans, La.	19887
St. Louis, Mo.	19947
Chicago, Ill.	20007
St. Paul, Minn.	20067
Des Moines, Ia.	20127
Indianapolis, Ind.	20187
Columbus, Ohio	20247
Cleveland, Ohio	20307
Pittsburgh, Pa.	20367
Philadelphia, Pa.	20427
New York City, N.Y.	20487
Boston, Mass.	20547
Washington, D.C.	20607
Richmond, Va.	20667
Charlotte, N.C.	20727
Atlanta, Ga.	20787
Mobile, Ala.	20847
New Orleans, La.	20907
St. Louis, Mo.	20967
Chicago, Ill.	21027
St. Paul, Minn.	21087
Des Moines, Ia.	21147
Indianapolis, Ind.	21207
Columbus, Ohio	21267
Cleveland, Ohio	21327
Pittsburgh, Pa.	21387
Philadelphia, Pa.	21447
New York City, N.Y.	21507
Boston, Mass.	21567
Washington, D.C.	21627
Richmond, Va.	21687
Charlotte, N.C.	21747
Atlanta, Ga.	21807
Mobile, Ala.	21867
New Orleans, La.	21927
St. Louis, Mo.	21987
Chicago, Ill.	22047
St. Paul, Minn.	22107
Des Moines, Ia.	22167
Indianapolis, Ind.	22227
Columbus, Ohio	22287
Cleveland, Ohio	22347
Pittsburgh, Pa.	22407
Philadelphia, Pa.	22467
New York City, N.Y.	22527
Boston, Mass.	22587
Washington, D.C.	22647
Richmond, Va.	22707
Charlotte, N.C.	22767
Atlanta, Ga.	22827
Mobile, Ala.	22887
New Orleans, La.	22947
St. Louis, Mo.	23007
Chicago, Ill.	23067
St. Paul, Minn.	23127
Des Moines, Ia.	23187
Indianapolis, Ind.	23247
Columbus, Ohio	23307
Cleveland, Ohio	23367
Pittsburgh, Pa.	23427
Philadelphia, Pa.	23487
New York City, N.Y.	23547
Boston, Mass.	23607
Washington, D.C.	23667
Richmond, Va.	23727
Charlotte, N.C.	23787
Atlanta, Ga.	23847
Mobile, Ala.	23907
New Orleans, La.	23967
St. Louis, Mo.	24027
Chicago, Ill.	24087
St. Paul, Minn.	24147
Des Moines, Ia.	24207
Indianapolis, Ind.	24267
Columbus, Ohio	24327
Cleveland, Ohio	24387
Pittsburgh, Pa.	24447
Philadelphia, Pa.	24507
New York City, N.Y.	24567
Boston, Mass.	24627
Washington, D.C.	24687
Richmond, Va.	24747
Charlotte, N.C.	24807
Atlanta, Ga.	24867
Mobile, Ala.	24927
New Orleans, La.	24987
St. Louis, Mo.	25047
Chicago, Ill.	25107
St. Paul, Minn.	25167
Des Moines, Ia.	25227
Indianapolis, Ind.	25287
Columbus, Ohio	25347
Cleveland, Ohio	25407
Pittsburgh, Pa.	25467
Philadelphia, Pa.	25527
New York City, N.Y.	25587
Boston, Mass.	25647
Washington, D.C.	25707
Richmond, Va.	25767
Charlotte, N.C.	25827
Atlanta, Ga.	25887
Mobile, Ala.	25947
New Orleans, La.	26007
St. Louis, Mo.	26067
Chicago, Ill.	26127
St. Paul, Minn.	26187
Des Moines, Ia.	26247
Indianapolis, Ind.	26307
Columbus, Ohio	26367
Cleveland, Ohio	26427
Pittsburgh, Pa.	26487
Philadelphia, Pa.	26547
New York City, N.Y.	26607
Boston, Mass.	26667
Washington, D.C.	26727
Richmond, Va.	26787
Charlotte, N.C.	26847
Atlanta, Ga.	26907
Mobile, Ala.	26967
New Orleans, La.	27027
St. Louis, Mo.	27087
Chicago, Ill.	27147
St. Paul, Minn.	27207
Des Moines, Ia.	27267
Indianapolis, Ind.	27327
Columbus, Ohio	27387
Cleveland, Ohio	27447
Pittsburgh, Pa.	27507
Philadelphia, Pa.	27567
New York City, N.Y.	27627
Boston, Mass.	27687
Washington, D.C.	27747
Richmond, Va.	27807
Charlotte, N.C.	27867
Atlanta, Ga.	27927
Mobile, Ala.	27987
New Orleans, La.	28047
St. Louis, Mo.	28107
Chicago, Ill.	28167
St. Paul, Minn.	28227
Des Moines, Ia.	28287
Indianapolis, Ind.	28347
Columbus, Ohio	28407
Cleveland, Ohio	28467
Pittsburgh, Pa.	28527
Philadelphia, Pa.	28587
New York City, N.Y.	28647
Boston, Mass.	28707
Washington, D.C.	28767
Richmond, Va.	28827
Charlotte, N.C.	28887
Atlanta, Ga.	28947
Mobile, Ala.	29007
New Orleans, La.	29067
St. Louis, Mo.	29127
Chicago, Ill.	29187
St. Paul, Minn.	29247
Des Moines, Ia.	29307
Indianapolis, Ind.	29367
Columbus, Ohio	29427
Cleveland, Ohio	29487
Pittsburgh, Pa.	29547
Philadelphia, Pa.	29607
New York City, N.Y.	29667
Boston, Mass.	29727
Washington, D.C.	29787
Richmond, Va.	29847
Charlotte, N.C.	29907
Atlanta, Ga.	29967
Mobile, Ala.	30027
New Orleans, La.	30087
St. Louis, Mo.	30147
Chicago, Ill.	30207
St. Paul, Minn.	30267
Des Moines, Ia.	30327
Indianapolis, Ind.	30387
Columbus, Ohio	30447
Cleveland, Ohio	30507
Pittsburgh, Pa.	30567
Philadelphia, Pa.	30627
New York City, N.Y.	30687
Boston, Mass.	30747
Washington, D.C	



# COUNTRY AND URBAN LIVING at its Best

**GREEN MOUNTAIN LAND** provides abundant vacation sites and countless opportunities for industry within a few hours drive of the large centers of population in the East—Boston, Providence, Hartford, New York, Philadelphia, Buffalo, Ottawa, Montreal, etc. With the completion of the Thruways Vermont is within about a day's drive of more distant points—Washington, Pittsburgh, Cleveland, Detroit, Chicago.

VERMONT is a main gateway to New England from the North and West. In this area of nearly ten thousand square miles there are innumerable mountains and hills, hundreds of rivers and mountain brooks and several hundred lakes and ponds, large and small. In many cases highways follow valleys, close to river banks with green clad hills on either side; other roads lead into the hills, off the beaten paths, to scenes of cozy, homely, rural living. Everywhere there are close-ups or distant views of friendly mountains.

Much road building has been going on and there is now an excellent hard surfaced system reaching into all parts of the State. Many secondary highways are surfaced, others are gravelled with dust-layer used in the summer. Then there are the so-called town roads for those who like to explore.

**VERMONT LIFE** the State's beautiful quarterly magazine, with its many full-color pages, is a continuing portrait of Vermont, its scenes, people, institutions, ideas and accomplishments. Only \$1.85 a year. \$3.50 for two years; \$5.00 for three years. Address Vermont Life Magazine, Montpelier, Vt.

### VERMONT INDUSTRIES

Vermont industries are widely diversified, and the sizes of the manufacturing plants range from small artisan shops employing just a few people up to the world-famed industries employing hundreds. Highly skilled labor is prevalent in Vermont and is employed primarily in the machine tool, monumental, precision tool and electronics industries. In the last five years Vermont labor has been "discovered" by electronic industries as is exemplified by the three plants of General Electric and the International Business Machines operation.

The world's largest marble quarries are located in the Rutland-Proctor area. Located in the Barre area are the world's largest granite quarries, stone from which is noted for its very high quality. 95% of the Nation's asbestos is mined near Eden. Limestone deposits are extensively worked in the northwest quadrant of the State—particularly in Plymouth, Proctor, Swanton and Winooski. Slate is plentiful and of high quality in the Fair Haven-Poultney area. Talc is mined in several places, chiefly Johnson, Moretown and Chester.



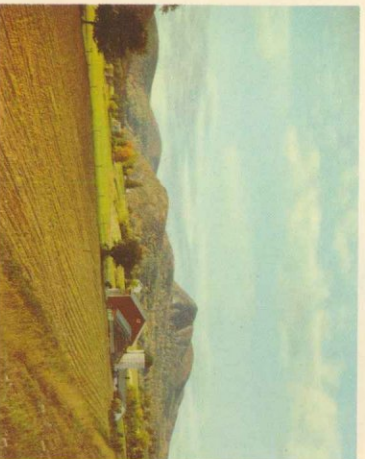
Furniture, plywood and wide varieties of wood and paper products have found the highly skilled Vermont "craftsmen" easily adaptable. The incidence of home ownership among Vermont workers is very high. Their proximity to the four season recreation areas leads to a stability and turn over rate that is second to none in the United States.

A complete Directory of Vermont Manufactured Products is yours for the asking at any information center or from the Industrial Development Division, Vermont Development Commission, Montpelier, or at either of the Vermont Information Centers located at 1268 Avenue of the Americas, New York City or Laurentien Hotel, Montreal.

### PLANT LOCATION SERVICES

The Vermont Development Commission is competently and adequately staffed to furnish you with complete packages on manufacturing cost comparisons; conduct research and arrange financing for any proposed plant.

Vermont communities are more than anxious to help you locate with us. There are over 155 active industrial development groups in the state prepared to act as financial catalysts in any new building program. All inquiries are handled in confidence and in a professional manner.



### VERMONT FARM PRODUCTS

(Revised as of Feb. 5, 1959)

Total Farms (1954)*	15,981
Dairy Farms (1954)†	9,930
Cattle Totals (1958)*	441,000
Milk Production (1957)* lbs.	1,766,000,000
Receipts—Dairy Products (1957)*	\$83,233,000
Receipts—Cattle & Calves Sold (1957)*	\$9,090,000
Eggs Produced (1957)*	192,000,000
Chickens on Farms (1958)*	986,000
Receipts—Eggs & Poultry Products Sold (Exclusive of Turkeys) (1957)*	\$8,463,000
Turkeys Produced (1957)*	107,000
Maple Trees Trapped (1958)*	1,954,000
Maple Syrup Crop (1958) (gallons)	567,000
Value of Maple Crop (1958)	\$2,250,000
Apple Crop (1958)* Bushels	1,070,000
Potato Crop (1958)* Cwt.	367,000
Farms with Electricity Available (1956)†	98.2%
Farms with Telephones (1956)†	76%
Total Area of State, Acres	5,937,920
Population (1950)†	377,747

\*U.S.D.A.E. and Vermont Department of Agriculture Figures

†U.S. Census Figures

### HISTORIC VERMONT

Vermont, having no coast line, was the last of the New England states to be settled. The Green Mountain area presented great hazards to the white men. It had been a favorite hunting and fishing ground for Indians and its valleys were routes for raiding parties from the North.

From time to time, hardy scouts penetrated this wilderness and returned to the colonies with stories of great forests, fertile lands, and magnificent scenery.

These founders of Vermont were of necessity self-reliant. Their independence of thought and action was marked from the beginning. While pressing for recognition of their rights, they organized a republic with a complete governmental set-up.

Traveling about Vermont, in villages and farm areas, one comes upon interesting examples of Colonial architecture, homes, churches, etc. Many old time structures, including covered bridges, have been preserved for posterity through the efforts of the Vermont Historic Sites Commission and by individuals notably, the Hyde Cabin in Grand Isle, the Coolidge Homestead in Plymouth and the Hubbardston Battlefield. The Bennington Battle Monument and museum, the Shelburne Museum south of Burlington on U. S. 7, and the treasures of the Vermont Historical Society in Montpelier are notable, but other collections should not be overlooked.

### VERMONT INFORMATION CENTER IN N. Y. C.

The Vermont Information Center, next door to Radio City Music Hall, 1268 Avenue of the Americas, is permanently staffed to handle inquiries on vacations, recreation, Vermont products, complete plant location service, agriculture, and all Vermont information. Come in or phone: COLUMBUS 5-1450.

Pictures by Otten, Vermont Development Commission.

- (Number on Map precedes. Index location follows.)
- 1. AULTS**  
Picnic, Tenting, Lean-tos, Road to summit, Scenic Views, Caretaker. N-5
  - 2. ASCOTNEY**  
Picnic, Tenting, Lean-tos, Hiking, Paved auto road to near summit, Scenic Views, Geological Interest, Caretaker. 0-6
  - 3. BRANBURY**  
Bath House, Swimming, Fire Beach, Picnic, Caretaker. (No Camping). 0-3
  - 4. BRIGHTON**  
Bathing, Picnic, Caretaker. (No Camping). K-8
  - 5. CRYSTAL LAKE**  
Bath House, Swimming, Excellent Beach, Picnic, Caretaker. L-7
  - 6. D.A.R.**  
Picnic, Tenting, Lean-tos, Boating, On Shore of Lake Champlain, Caretaker. N-2
  - 7. DARLING**  
Paved auto road to mountain top, Picnic, Tenting, Lean-tos, Hiking, Skiing, Geological Interest, Caretaker. L-8
  - 8. DUTTON PINES**  
Picnic, Caretaker. (No Camping). S-5
  - 9. ELMORE**  
Bath House, Swimming, Boating, Fishing, Picnic, Hiking, Caretaker. L-5
  - 10. EMBERLAD LAKE**  
Picnic, Camping (After July 1), Caretaker. 0-3
  - 11. GIFFORD WOODS**  
Picnic, Lean-tos, Tenting, Appalachian Foot Trail crosses park, Caretaker. P-4
  - 12. JAMAICA**  
Picnic, Bathing (undeveloped). R-5
  - 13. MOLLY STARK**  
Camping (After July 1), Caretaker. S-4
  - 14. MOUNDOS**  
Hiking, Bird Sanctuary (undeveloped). M-4
  - 15. MT. PHILO**  
Picnic, Paved road to Summit, Scenic Views, Foot Trails, Caretaker. (No Camping). 0-3
  - 16. ST. CATHERINE**  
Picnic, Good Beach, Bathing, Caretaker. (No Camping). K-3
  - 17. ST. ALBANS BAY**  
Bath House, Marina, Swimming, Beach, Picnic, Caretaker. (No Camping). L-3
  - 18. SAND BAR**  
Bath House, Swimming, Boating, Picnic, Tenting, Fishing, Caretaker. P-5
  - 19. SILVER LAKE**  
Bathing, Picnic, Caretaker. (No Camping). 0-6
  - 20. WILLIGUS**  
Picnic, Foot Trails, Caretaker. (No Camping).

### STATE FORESTS

- 21. COOLIDGE (Piney Hollow)**  
Picnic, Tenting, Lean-tos, Hiking, Scenic Views, Caretaker. P-5
- 22. COOLIDGE (Killington)**  
Skiing, Winter Caretaker. P-4
- 23. GROTON**  
Three Peaks, Tenting, Lean-tos, Picnic, Fishing, Boating, Hiking, Caretaker. M-6
- 24. JAY PEAK**  
Hiking, Skiing, Winter Caretaker. K-6
- 25. MAJSTOKE**  
Bath House, Swimming, Picnic, Hiking, Fishing, Lean-tos, Caretaker. L-9
- 26. MT. MANSFIELD (Smugglers Notch)**  
Picnic, Tenting, Lean-tos, Hiking, Road to mountain top, Geological and botanical interest, Skiing, Chair Lift, Caretaker. L-4
- 27. MT. MANSFIELD (Underhill)**  
Picnic, Tenting, Lean-tos, Hiking, Scenic Views, Caretaker. L-4
- 28. OKEHO**  
Skiing, Winter Caretaker. 0-4
- 29. THEFORD HILL**  
Picnic, Scenic Views, Caretaker. (No Camping). 0-6
- 30. TOWNSHEND**  
Picnic, Tenting, Swimming nearby, Caretaker. R-5

All developed state park and forest areas have fireplaces, good water tables and sanitary facilities. For further information and illustrated folder, write the:

Department of Forests and Parks, Montpelier, Vermont.  
FEES—Service and Maintenance fees at state parks and forests—50 cents per day per group of five persons or less, with or without car. \$2.50 per day per group of five persons or less, with or without car. BATH HOUSE LOCKERS—10 cents per person.  
(All fees subject to change without notice.)  
PARK HOURS—All of the state parks and forest recreational areas are open to the public between the hours of 10 AM and 6 PM during the summer season. Ski areas close at 5 PM.

### GREEN MOUNTAIN NATIONAL FOREST

- 31. GREENDALE**  
Picnicking, Camping. 0-4
- 32. HARPWOOD POND**  
Swimming, Camping, Picnicking, Nature Trail. 0-4
- 33. TEXAS FALLS**  
Picnicking, Improved Nature Trail to vantage point for view of Falls and Gorge. 0-4
- 34. WHITE ROCKS**  
Picnicking, Nature Trail to Lookoff Point, Interesting to Geologist and Botanist. 0-4

### HUNTING AND FISHING

Non-resident hunting and fishing licenses may be purchased from Town and City Clerks within the State. Fishing licenses may be secured also from sporting goods stores (3-day licenses only). Prices are reasonable for non-resident hunting licenses and for season, 14-day and 3-day fishing licenses.

Information on open seasons may be obtained from the places mentioned above, or from the Fish and Game Service, Montpelier, Vermont.

Spring and early summer offer the best trout and land-locked salmon fishing. Mid-summer and fall bring lake fishing and small mouth bass, pike, pickerel and pan fish, trout, too. Within Vermont's borders are innumerable fishing opportunities in 400 odd lakes and ponds and in the many streams.

Upland bird hunting is good in most sections in October. The waters of Lake Champlain are particularly popular among duck hunters each fall. During the open season on deer with three inch antlers, the recent average kill has been about 10,000 animals. Vermont also has a bow and arrow season on deer. A fish and game pamphlet will be delivered by the Town Clerk, when a license is obtained. For a copy of this pamphlet or for further information write the Vermont Fish and Game Service, Montpelier, Vermont.

### OTHER SPORTS

Lake Champlain more than makes up for the lack of a sea coast. It is noted for its spectacular sunsets and mountain backgrounds, scenic settings for resorts, cottages, camping areas and beaches. Large and small craft ply its waters. In addition there are over four hundred mountain-bound lakes and ponds.

The Long Trail extends along the mountain tops for over 250 miles. Many hikers take long or short walks on this seemingly wilderness footpath. Address Green Mountain Club, Rutland, Vermont.

There are over thirty golf courses in the State ranging from several of championship caliber to a very few of modest classification. These are well scattered so there is one or more within convenient driving distance.

The vales and glens of the foothills are popular among horseback riders. Boys and girls camps, several resorts and riding clubs feature stables of good mounts. Write Green Mountain Horse Association, South Woodstock, Vermont.

Many retired people have found desirable living in the hills and valleys. Others with long vacations have established country homes for part-time use. Vermont is indeed a "Way of Contented Living".

### KEEP VERMONT BEAUTIFUL!

Don't Be A Litterbug. . . .  
TRAVEL TRASH Cans are placed at intervals along Vermont highways. Use them to deposit your trash.



### VERMONT INFORMATION CENTER IN MONTREAL

A new Vermont Information Center to service the Canadian market has recently been opened co-operating with New Hampshire in the LAURENTIEN HOTEL. A competent, bi-lingual staff will handle inquiries on vacations, recreation, Vermont products, complete plant location service, agriculture and all Vermont information. Come in or phone.

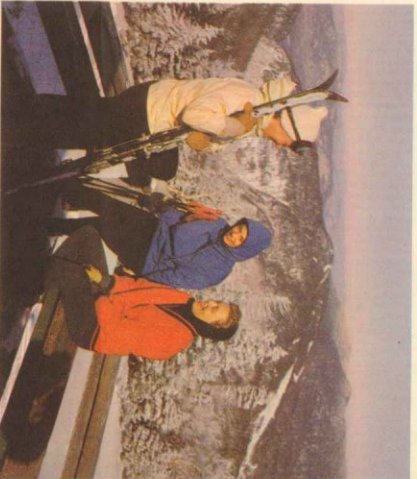
### WINTER SPORTS

Vermont winter sports are a major industry in the state with new ski areas being added and established ones being improved yearly. Today Vermont supports 30 major ski areas offering the best and latest in equipment, facilities and accommodations. There is just the right type of skiing available in Vermont for young and old, novice to expert.

The best snow conditions in the East for skiers are found along the Green Mountains from Massachusetts to Canada. Along the range the annual average snowfall reaches 120 inches. At lower elevations there are substantial snow depths. This means a long ski season.

Vermont's main and connecting highways are kept well plowed and sanded throughout the winter. Ski reports are carried in metropolitan papers and are available at travel centers in the Northeast, bus and railroad terminals, Vermont Information Center in New York and Montreal, Canada.

Throughout Vermont travelers find hospitable hotels, modern motels, tourist homes and roadside cabins. The stranger is assured of sanitary conditions through the unique inspection system of the State Department of Health. There are hundreds of housekeeping cabins for rent. The latter are for the most part on lake shores.



### CLIMATE

Vermont lies in that area of the Northeast which is classed as "cool" for summer vacations. In any season temperatures are variable. There are few oppressively humid days during the summers and evenings are uniformly cool. Day time temperatures sometimes register in the 80s and rarely in the low 90s. Nearly every night thermometers will go down into the 60s.

Fall brings many comfortably warm days with crisp nights. Because of the bracing atmosphere and the light traffic on the highways, many take vacations in Vermont at this time. In the low lands snow usually comes in late November, but there is not usually sufficient accumulation for skiing until late December.

During winter months there are many comfortable "overcoat days". The cold is not as penetrating as in areas where there is more humidity.

March and early April bring "Maple Sugar Time". Ideal weather for good "runs" of maple sap is when there is thawing in the daytime with freezing during the nights.

May is apple blossom time. It marks the time of the fresh green spring foliage and the opening of the fishing season. There are many summerlike days, a pleasant time for touring.

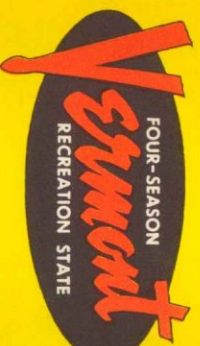
### FALL TOURS

Many thousands of people now enjoy the after Labor Day open roads of Vermont. Traffic is light, accommodations are uncrowded and in late September the glorious foliage for which Vermont is famous begins to appear, reaching its peak the first part of October. There are the comfortable days of "Indian Summer" accompanied by brisk nights. This is the popular time for the famous church suppers.

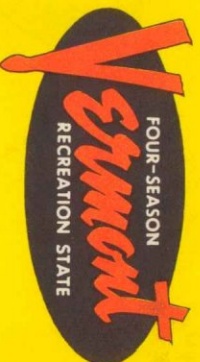
### INFORMATION BOOTHS

In communities near main gateways to Vermont, there are official information booths, approved by the Vermont Development Commission, where visitors can get up-to-the-minute information each summer about road conditions, things to see, routes, etc. The Highway Department issues periodic road condition maps to help travelers in avoiding construction. Weekly rolling bulletins are published in Vermont daily papers the first of each week. These are available at service stations, information booths, Chambers of Commerce, etc. There is an efficient Vermont State Police force on continuous duty ready to aid motorists.

### OFFICIAL HIGHWAY MAP



### OFFICIAL HIGHWAY MAP



Printed and Distributed by

VERMONT DEPARTMENT OF HIGHWAYS

1960

Printed and Distributed by

VERMONT DEPARTMENT OF HIGHWAYS

1960





# COUNTRY AND URBAN LIVING at its Best

**GREEN MOUNTAIN LAND** provides abundant vacation sites and countless opportunities for industry within a few hours drive of the large centers of population in the East—Boston, Providence, Hartford, New York, Philadelphia, Buffalo, Ottawa, Montreal, etc. With the completion of the Thruways Vermont is within about a day's drive of more distant points—Washington, Pittsburgh, Cleveland, Detroit, Chicago.

VERMONT is a main gateway to New England from the North and West. In this area of nearly ten thousand square miles there are innumerable mountains and hills, hundreds of rivers and mountain brooks and several hundred lakes and ponds, large and small. In many cases highways follow valleys, close to river banks with green clad hills on either side; other roads lead into the hills, off the beaten paths, to scenes of cozy, homely, rural living. Everywhere there are close-ups or distant views of friendly mountains.

Much road building has been going on and there is now an excellent hard surfaced system reaching into all parts of the State. Many secondary highways are surfaced, others are gravelled with dust-layer used in the summer. Then there are the so-called town roads for those who like to explore.

**VERMONT LIFE** the State's beautiful quarterly magazine, with its many full-color pages, is a continuing portrait of Vermont, its scenes, people, institutions, ideas and accomplishments. Only \$1.85 a year. \$3.50 for two years; \$5.00 for three years. Address Vermont Life Magazine, Montpelier, Vt.

### VERMONT INDUSTRIES

Vermont industries are widely diversified, and the sizes of the manufacturing plants range from small artisan shops employing just a few people up to the world-famed industries employing hundreds. Highly skilled labor is prevalent in Vermont and is employed primarily in the machine tool, monumental, precision tool and electronics industries. In the last five years Vermont labor has been "discovered" by electronic industries as is exemplified by the three plants of General Electric and the International Business Machines operation.

The world's largest marble quarries are located in the Rutland-Proctor area. Located in the Barre area are the world's largest granite quarries, stone from which is noted for its very high quality. 95% of the Nation's asbestos is mined near Eden. Limestone deposits are extensively worked in the northwest quadrant of the State—particularly in Plymouth, Proctor, Swanton and Winooski. Slate is plentiful and of high quality in the Fair Haven-Poultney area. Talc is mined in several places, chiefly Johnson, Moretown and Chester.



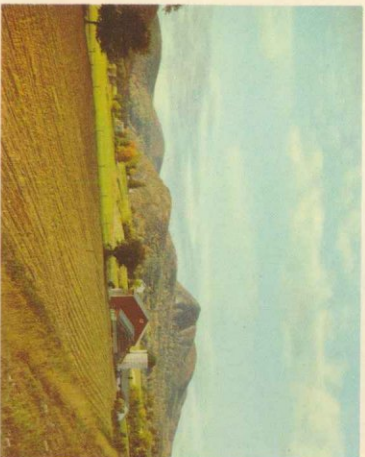
Furniture, plywood and wide varieties of wood and paper products have found the highly skilled Vermont "craftsmen" easily adaptable. The incidence of home ownership among Vermont workers is very high. Their proximity to the four season recreation areas leads to a stability and turn over rate that is second to none in the United States.

A complete Directory of Vermont Manufactured Products is yours for the asking at any information center or from the Industrial Development Division, Vermont Development Commission, Montpelier, or at either of the Vermont Information Centers located at 1268 Avenue of the Americas, New York City or Laurentien Hotel, Montreal.

### PLANT LOCATION SERVICES

The Vermont Development Commission is competently and adequately staffed to furnish you with complete packages on manufacturing cost comparisons; conduct research and arrange financing for any proposed plant.

Vermont communities are more than anxious to help you locate with us. There are over 155 active industrial development groups in the state prepared to act as financial catalysts in any new building program. All inquiries are handled in confidence and in a professional manner.



### VERMONT FARM PRODUCTS

(Revised as of Feb. 5, 1959)

Total Farms (1954)*	15,981
Dairy Farms (1954)†	9,930
Cattle Totals (1958)*	441,000
Milk Production (1957)* lbs.	1,766,000,000
Receipts—Dairy Products (1957)*	\$83,233,000
Receipts—Cattle & Calves Sold (1957)*	\$9,090,000
Eggs Produced (1957)*	192,000,000
Chickens on Farms (1958)*	986,000
Receipts—Eggs & Poultry Products Sold (Exclusive of Turkeys) (1957)*	\$8,463,000
Turkeys Produced (1957)*	107,000
Maple Trees Trapped (1958)*	1,954,000
Maple Syrup Crop (1958) (gallons)	567,000
Value of Maple Crop (1958)	\$2,250,000
Apple Crop (1958)* Bushels	1,070,000
Potato Crop (1958)* Cwt.	367,000
Farms with Electricity Available (1956)†	98.2%
Farms with Telephones (1956)†	76%
Total Area of State, Acres	5,937,920
Population (1950)†	377,747

\*U.S.D.A.E. and Vermont Department of Agriculture Figures

†U.S. Census Figures

### HISTORIC VERMONT

Vermont, having no coast line, was the last of the New England states to be settled. The Green Mountain area presented great hazards to the white men. It had been a favorite hunting and fishing ground for Indians and its valleys were routes for raiding parties from the North.

From time to time, hardy scouts penetrated this wilderness and returned to the colonies with stories of great forests, fertile lands, and magnificent scenery.

These founders of Vermont were of necessity self-reliant. Their independence of thought and action was marked from the beginning. While pressing for recognition of their rights, they organized a republic with a complete governmental set-up.

Traveling about Vermont, in villages and farm areas, one comes upon interesting examples of Colonial architecture, homes, churches, etc. Many old time structures, including covered bridges, have been preserved for posterity through the efforts of the Vermont Historic Sites Commission and by individuals notably, the Hyde Cabin in Grand Isle, the Coolidge Homestead in Plymouth and the Hubbardston Battlefield. The Bennington Battle Monument and museum, the Shelburne Museum south of Burlington on U. S. 7, and the treasures of the Vermont Historical Society in Montpelier are notable, but other collections should not be overlooked.

### VERMONT INFORMATION CENTER IN N. Y. C.

The Vermont Information Center, next door to Radio City Music Hall, 1268 Avenue of the Americas, is currently staffed to handle inquiries on vacations, recreation, Vermont products, complete plant location service, agriculture, and all Vermont information. Come in or phone: COLUMBUS 5-1450.

Pictures by Otten, Vermont Development Commission.

- 1. **ADLIS**  
Picnic, Tenting, Lean-tos, Road to summit, Scenic Views, Caretaker. N-5
- 2. **ASCOTNEY**  
Picnic, Tenting, Lean-tos, Hiking, Paved auto road to near summit, Scenic Views, Geological Interest, Caretaker. 0-6
- 3. **BRANDURY**  
Bath House, Swimming, Fire Beach, Picnic, Caretaker. (No Camping). 0-3
- 4. **BRIGHTON**  
Bathing, Picnic, Caretaker. (No Camping). K-8
- 5. **CRYSTAL LAKE**  
Bath House, Swimming, Excellent Beach, Picnic, Caretaker. L-7
- 6. **D.A.R.**  
Picnic, Tenting, Lean-tos, Boating, On Shore of Lake Champlain, Caretaker. N-2
- 7. **DARLING**  
Paved auto road to mountain top, Picnic, Tenting, Lean-tos, Hiking, Skiing, Geological Interest, Caretaker. L-8
- 8. **DUTTON PINES**  
Picnic, Caretaker. (No Camping). S-5
- 9. **ELMORE**  
Bath House, Swimming, Boating, Fishing, Picnic, Hiking, Caretaker. L-5
- 10. **EMERALD LAKE**  
Picnic, Camping (After July 1), Caretaker. 0-3
- 11. **GIFFORD WOODS**  
Picnic, Lean-tos, Tenting, Appalachian Foot Trail crosses park, Caretaker. P-4
- 12. **JAMAICA**  
Picnic, Bathing (undeveloped). R-5
- 13. **MOLLY STARK**  
Camping (After July 1), Caretaker. S-4
- 14. **MOUNDOS**  
Hiking, Bird Sanctuary (undeveloped). M-4
- 15. **MT. PHILO**  
Picnic, Paved road to Summit, Scenic Views, Foot Trails, Caretaker. (No Camping). 0-3
- 16. **ST. CATHERINE**  
Picnic, Good Beach, Bathing, Caretaker. (No Camping). K-3
- 17. **ST. ALBANS BAY**  
Bath House, Marina, Swimming, Beach, Picnic, Caretaker. (No Camping). L-3
- 18. **SAND BAR**  
Bath House, Swimming, Boating, Picnic, Tenting, Fishing, Caretaker. P-5
- 19. **SILVER LAKE**  
Bathing, Picnic, Caretaker. (No Camping). 0-6
- 20. **WILGUS**  
Picnic, Foot Trails, Caretaker. (No Camping).

### STATE FORESTS

- 21. **COOLIDGE (Piney Hollow)**  
Picnic, Tenting, Lean-tos, Hiking, Scenic Views, Caretaker. P-5
- 22. **COOLIDGE (Killington)**  
Skiing, Winter Caretaker. P-4
- 23. **GROTON**  
Three Peaks: Tenting, Lean-tos, Picnic, Fishing, Boating, Hiking, Caretaker. M-6
- 24. **JAY PEAK**  
Hiking, Skiing, Winter Caretaker. K-6
- 25. **MAJSTOKE**  
Bath House, Swimming, Picnic, Hiking, Fishing, Lean-tos, Caretaker. L-9
- 26. **MT. MANSFIELD (Smugglers Notch)**  
Picnic, Tenting, Lean-tos, Hiking, Road to mountain top, Geological and botanical interest, Skiing, Chair Lift, Caretaker. L-4
- 27. **MT. MANSFIELD (Underhill)**  
Picnic, Tenting, Lean-tos, Hiking, Scenic Views, Caretaker. L-4
- 28. **ORFEDO**  
Skiing, Winter Caretaker. 0-4
- 29. **THEFORD HILL**  
Picnic, Scenic Views, Caretaker. (No Camping). 0-6
- 30. **TOWNSHEND**  
Picnic, Tenting, Swimming nearby, Caretaker. R-5

All developed state park and forest areas have fireplaces, good water tables and sanitary facilities. For further information and illustrated folder, write the:

**Department of Forests and Parks, Montpelier, Vermont.**  
**FEES**—Service and Maintenance fees at state parks and forests—50 cents per day per group of five persons or less, with or without car. \$2.50 per day per group of five persons or less, with or without car. **BATH HOUSE LOCKERS**—10 cents per person. (All fees subject to change without notice).  
**PARK HOURS**—All of the state parks and forest recreational areas are open to the public between the hours of 10 AM and 6 PM during the summer season. Ski areas close at 5 PM.

### GREEN MOUNTAIN NATIONAL FOREST

- 31. **GREENDALE**  
Picnicking, Camping. 0-4
- 32. **HARPOOD POND**  
Swimming, Camping, Picnicking, Nature Trail. 0-4
- 33. **TEXAS FALLS**  
Picnicking, Improved Nature Trail to vantage point for view of Falls and Gorge. 0-4
- 34. **WHITE ROCKS**  
Picnicking, Nature Trail to Lookoff Point, Interesting to Geologist and Botanist. 0-4

### HUNTING AND FISHING

Non-resident hunting and fishing licenses may be purchased from Town and City Clerks within the State. Fishing licenses may be secured also from sporting goods stores (3-day licenses only). Prices are reasonable for non-resident hunting licenses and for season, 14-day and 3-day fishing licenses.

Information on open seasons may be obtained from the places mentioned above, or from the Fish and Game Service, Montpelier, Vermont.

Spring and early summer offer the best trout and land-locked salmon fishing. Mid-summer and fall bring lake fishing and small mouth bass, pike, pickerel and pan fish, trout, too. Within Vermont's borders are innumerable fishing opportunities in 400 odd lakes and ponds and in the many streams.

Upland bird hunting is good in most sections in October. The waters of Lake Champlain are particularly popular among duck hunters each fall. During the open season on deer with three inch antlers, the recent average kill has been about 10,000 animals. Vermont also has a bow and arrow season on deer. A fish and game pamphlet will be delivered by the Town Clerk, when a license is obtained. For a copy of this pamphlet or for further information write the Vermont Fish and Game Service, Montpelier, Vermont.

### OTHER SPORTS

Lake Champlain more than makes up for the lack of a sea coast. It is noted for its spectacular sunsets and mountain backgrounds, scenic settings for resorts, cottages, camping areas and beaches. Large and small craft ply its waters. In addition there are over four hundred mountain-bound lakes and ponds.

The Long Trail extends along the mountain tops for over 250 miles. Many hikers take long or short walks on this seemingly wilderness footpath. Address Green Mountain Club, Rutland, Vermont.

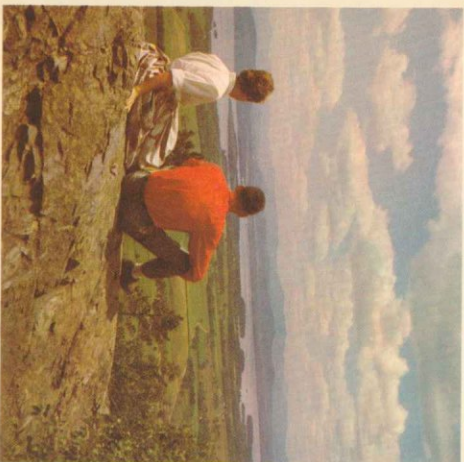
There are over thirty golf courses in the State ranging from several of championship caliber to a very few of modest classification. These are well scattered so there is one or more within convenient driving distance.

The vales and glens of the foothills are popular among horseback riders. Boys and girls camps, several resorts and riding clubs feature stables of good mounts. Write Green Mountain Horse Association, South Woodstock, Vermont.

Many retired people have found desirable living in the hills and valleys. Others with long vacations have established country homes for part-time use. Vermont is indeed a "Way of Contented Living".

### KEEP VERMONT BEAUTIFUL!

Don't Be A Litterbug. . . .  
 TRAVEL TRASH Cans are placed at intervals along Vermont highways. Use them to deposit your trash.



### VERMONT INFORMATION CENTER IN MONTREAL

A new Vermont Information Center to service the Canadian market has recently been opened co-operating with New Hampshire in the LAURENTIEN HOTEL. A competent, bi-lingual staff will handle inquiries on vacations, recreation, Vermont products, complete plant location service, agriculture and all Vermont information. Come in or phone.

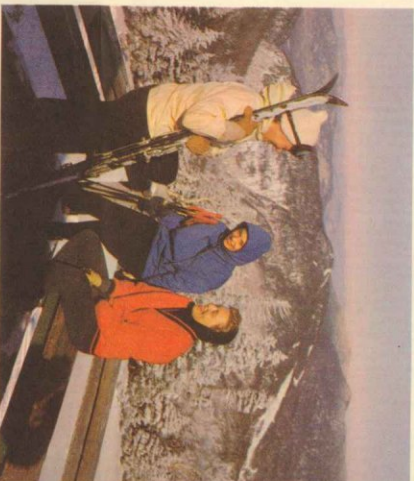
### WINTER SPORTS

Vermont winter sports are a major industry in the state with new ski areas being added and established ones being improved yearly. Today Vermont supports 30 major ski areas offering the best and latest in equipment, facilities and accommodations. There is just the right type of skiing available in Vermont for young and old, novice to expert.

The best snow conditions in the East for skiers are found along the Green Mountains from Massachusetts to Canada. Along the range the annual average snowfall reaches 120 inches. At lower elevations there are substantial snow depths. This means a long ski season.

Vermont's main and connecting highways are kept well plowed and sanded throughout the winter. Ski reports are carried in metropolitan papers and are available at travel centers in the Northeast, bus and railroad terminals, Vermont Information Center in New York and Montreal, Canada.

Throughout Vermont travelers find hospitable hotels, modern motels, tourist homes and roadside cabins. The stranger is assured of sanitary conditions through the unique inspection system of the State Department of Health. There are hundreds of housekeeping cabins for rent. The latter are for the most part on lake shores.



### CLIMATE

Vermont lies in that area of the Northeast which is classed as "cool" for summer vacations. In any season temperatures are variable. There are few oppressively humid days during the summers and evenings are uniformly cool. Day time temperatures sometimes register in the 80s and rarely in the low 90s. Nearly every night thermometers will go down into the 60s.

Fall brings many comfortably warm days with crisp nights. Because of the bracing atmosphere and the light traffic on the highways, many take vacations in Vermont at this time. In the low lands snow usually comes in late November, but there is not usually sufficient accumulation for skiing until late December.

During winter months there are many comfortable "overcoat days". The cold is not as penetrating as in areas where there is more humidity.

March and early April bring "Maple Sugar Time". Ideal weather for good "runs" of maple sap is when there is thawing in the daytime with freezing during the nights.

May is apple blossom time. It marks the time of the fresh green spring foliage and the opening of the fishing season. There are many summerlike days, a pleasant time for touring.

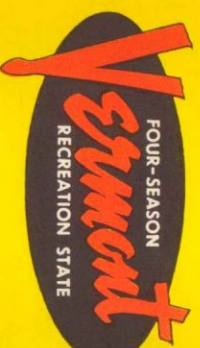
### FALL TOURS

Many thousands of people now enjoy the after Labor Day open roads of Vermont. Traffic is light, accommodations are uncrowded and in late September the glorious foliage for which Vermont is famous begins to appear, reaching its peak the first part of October. There are the comfortable days of "Indian Summer" accompanied by brisk nights. This is the popular time for the famous church suppers.

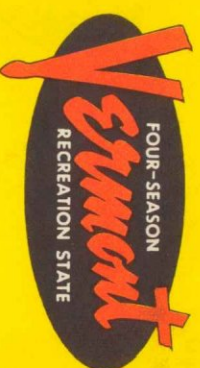
### INFORMATION BOOTHS

In communities near main gateways to Vermont, there are official information booths, approved by the Vermont Development Commission, where visitors can get up-to-the-minute information each summer about road conditions, things to see, routes, etc. The Highway Department issues periodic road condition maps to help travelers in avoiding construction. Weekly rolling bulletins are published in Vermont daily papers the first of each week. These are available at service stations, information booths, Chambers of Commerce, etc. There is an efficient Vermont State Police force on continuous duty ready to aid motorists.

### OFFICIAL HIGHWAY MAP



### OFFICIAL HIGHWAY MAP



Printed and Distributed by

VERMONT DEPARTMENT OF HIGHWAYS

1960

Printed and Distributed by

VERMONT DEPARTMENT OF HIGHWAYS

1960



# people . . .

Yes, most people come to the Green Mountain State for two reasons basically: its people and its scenery.

That's not to say Vermont doesn't have other attractions. It does—plenty of them. It has golf courses, lakes, bathing beaches, camp and picnic sites, horse-back trails, summer theaters, ski areas, fine accommodations and excellent eating establishments. But so do a lot of places.

What is it, then, that entices so many thousands of people here each year from the other states and the provinces of Canada—what is it that makes a Vermont vacation so different from any other of course we can't say, but it is the beauty of the state, and it is the beauty of people. They're both something quite rare—and quite wonderful—in this world of ours.

It's the scenery you'll notice first. It's what most people think of when they have to describe America to a foreigner. It's the peaceful country of rolling meadows, lively lakes, tidy farms tucked into the hills, quiet villages built with beauty, tranquil river valleys flecked with cattle, strong-running brooks of blue and green. It's hard to believe this expansive countryside exists in today's world of neon and chrome and gaudy plastic, but it does. In Vermont. No wonder someone has said "Vermont is every American's second state." No wonder others have said it looks just like one big Christmas card the year 'round. No wonder Americans who have never been here actually have been homesick for Vermont.

But visitors are drawn back to Vermont by something more compelling than its charm, its miles of unspoiled scenery, its pride in its rivers, mountains, and lakes. It is the people of Vermont themselves.

There is some quality in these green hills that makes a Vermont vacation different from anyone else. Oh, not as different as you might think at first. The hills are not as tall as the Rockies, not as steep as the Alps. Not every Vermont you stop at the village center will have a pay cash in advance for everything, including his coffin. But you will learn that there is just enough humor, Vermont in every Vermont to make the legend true; you will discover people in Vermont think and act, speak and live just a little differently from the way they do in other places. Maybe it's because—since the days men first came to these mountains—this has been the state that not only allows it, but expects it.

Perhaps you won't find these Vermont qualities attractive, but most visitors do. Take the Vermonters' traditional independence—some people call it cantankerousness. Take his frugality, some term it plain stinkiness. Take his respect for his heritage, the beauty of his land, some people say he just doesn't want to change anything. Take his sense of humor, some people say it doesn't exist. We think it does; he couldn't live with his fellow Vermonters if it didn't.

**Farmers**—Richard L. Wright, left, and Robert L. Steiner, Jr., right, of St Albans, Vt., are in a field in Fernal where both worked for the U.S. Department of Agriculture. Wright is a farmer, Steiner is a teacher. Wright's wife, Sherry (shown in the background with two of their three children), eight years ago, grew up, and was educated in lower New England. Mr. Wright was born, grew up, and was educated in Vermont. Wright now serves as a Model Farm in the children of Vermont, which Mr. Wright's farm is a part of. Wright's farm is a part of the Vermont country-side, and is a part of the Vermont country-side. Wright's farm is a part of the Vermont country-side, and is a part of the Vermont country-side.

As a visitor you may not see all the physical manifestations of the Vermont character right away. You may not eat a church supper that will make you forget Parisienne cooking. You may not witness a horse-pulling contest, sit in a town meeting, or be introduced to an old Vermont farmer, Constable, Weigher of Coal Hill, or a Vermont Constable, Weigher of Coal Hill. But you won't be in the Vermont country-side without the basic, enduring qualities that make Vermont what it is. The Vermonters who have come here as visitors and have chosen to remain as residents because of what they found here. A Vermonters place his way of life—his God, his family, his independence, his land and his heritage—above all other goals as he goes about the doing of a day's work. No one—least of all himself—ever claimed living in Vermont is easy or without problems but it is living the fullest. And it is in the joys and reward of this way of life that he invites you as a visitor to join with him—if you have a mind to.

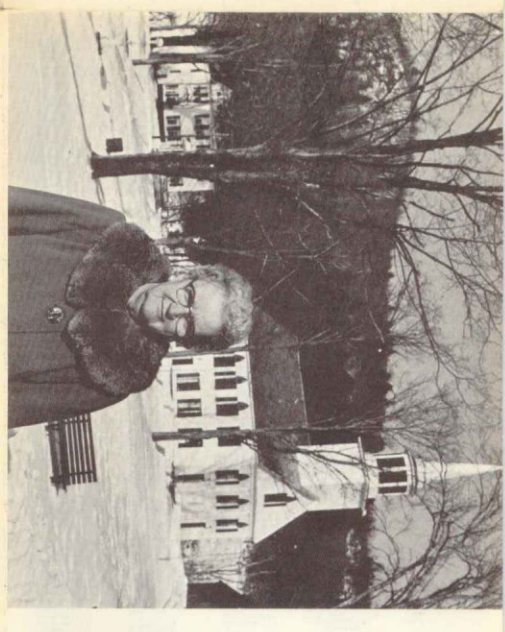
"When, then, is the best time to visit Vermont? We could say 'anytime', but it's not exactly true—it all depends on your interests.

Spring is certainly one of the busiest seasons. The annual ritual of gathering the maple sap from snow-covered slopes begins and ends. The farmers take to their greening fields, the wild flowers try not their best, the upland orchards burst with pink flowers, the grasses begin to grow, and the summer and skiing season opens. Because of the Vermonters' love of their country, the value you can get in buying Vermont products is agriculture. It is unbelievable when compared to prices in other countries.

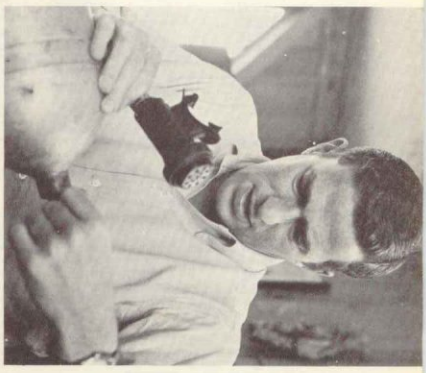
Summer of course is the most popular season. It is when the full fare of village and state activities—festivals, fairs, sports, concerts, theatres—can be sampled. And this is the time for the family-sportsman. The lakes and ponds are speckled with boats; the many state parks are filled with swimmers, hikers and campers; riding a proud-necked Morgan or portaging your canoe between sweeping rivers is at its best. So is lying in your hammock on a cool afternoon watching the mountains rise across Lake Champlain, the tiny villages and farms filling like crescents on a green wave.

Fall is Vermont's own season. There is nothing quite like it in the world. Not only are the colors of the turning leaves unbelievably varied, but the air has a snap and a crispness that brings thousands of people to Vermont each fall. Some come just to drive across the shimmering countryside and perhaps rumble over the covered bridges. (Yes, many of these sturdy structures are still in excellent condition.) They come to enjoy the weather conditions, but it is pretty safe to plan to come during the week of September and the first two weeks of October. Big game season is on, and a basket for the Macintoshes, Northern Spuds and the other hard-stemmed New England apples that will be ready then. And better make your reservations for hunting season too, for deer made the Green Mountain State a favorite place to get your deer, small game, and a few ponds overlooking.

Winter of course brings out the skier with his boots, his boards, his wax, and his diamond-hard determination. Because of its dependable snow-fall, Vermont has been the East's leading ski state for many years, and each season sees new facilities open



**Hunter**—Mrs. Bernis H. Cobb, of Townshend village-common, Townshend Vermont, is now in her 63rd year, yet continues to enjoy hiking, camping and especially hunting. For ten years, she has been a member of the Vermont Deer Hunting Club. She is also a member of the Vermont Deer Hunting Club. She is also a member of the Vermont Deer Hunting Club.



**Photographer**—Hanson Carroll, of Newich, Vt., is a freelance photographer in almost every major national magazine. Born out-of-state, Mr. Carroll and his wife live in Vermont. Mr. Carroll is a freelance photographer in almost every major national magazine. Born out-of-state, Mr. Carroll and his wife live in Vermont.

**Skilled Labor**—Edmund D. Stone, a tool designer at the IBM plant in Burlington, Vermont, is a member of the Vermont Fire Department. He is also a member of the Vermont Fire Department. He is also a member of the Vermont Fire Department.

## VERMONT

Please write us fully as to your interests and questions concerning a Vermont trip. Various free state publications, including those devoted to state parks, hunting & fishing, skiing, meals & lodging, real estate & rentals, and a list of movies available without charge, may be obtained by contacting:

**The Vermont Development Commission**  
200 State Office Building  
Montpelier, Vermont  
Phone CA 3-3465

*You are welcome to visit our two regional offices:*

<p><b>IN NEW YORK CITY</b> Vermont Information Center 1238 Avenue of the Americas (Next to Radio City Music Hall) Phone: CO 3-1450</p>	<p><b>IN MONTREAL</b> Vermont Information Center Laurier Hotel Phone: UN 1-0195</p>
--	---

This brochure was created by the staff of the Vermont Development Commission. Produced by Hays Advertising Agency, Burlington, Vt.  
PRINTED IN U.S.A.

**Teacher**—Mrs. Ardella T. Mack of Lower Graniteville School, Vt., teaches 1st, 2nd and 3rd grades. She has been teaching for 24 years. She has been teaching for 24 years. She has been teaching for 24 years.

**Side Judge**—Balth P. White, a dairy farmer from Reading, Vt., has served as assistant judge of the Vermont State Fair for 25 years. He has served as assistant judge of the Vermont State Fair for 25 years. He has served as assistant judge of the Vermont State Fair for 25 years.

**Developer**—Father George O. St. Onge of Richford, Vt., was born in lower New England, but grew up in Quebec Province, Canada. He has been a priest for 25 years. He has been a priest for 25 years. He has been a priest for 25 years.

**Artist**—Roy A. Kennedy and his wife live in Underhill Center, Vt., where he pursues his career as a painter and sculptor. He has been a painter and sculptor for 25 years. He has been a painter and sculptor for 25 years. He has been a painter and sculptor for 25 years.

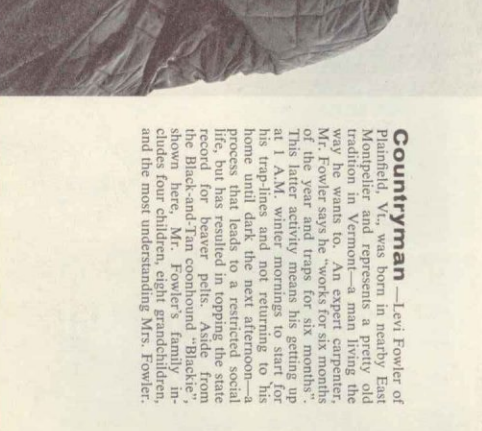
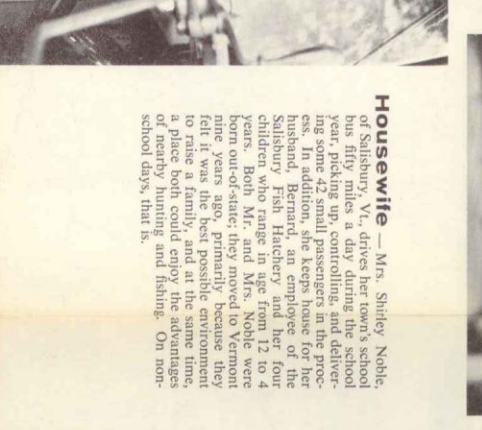
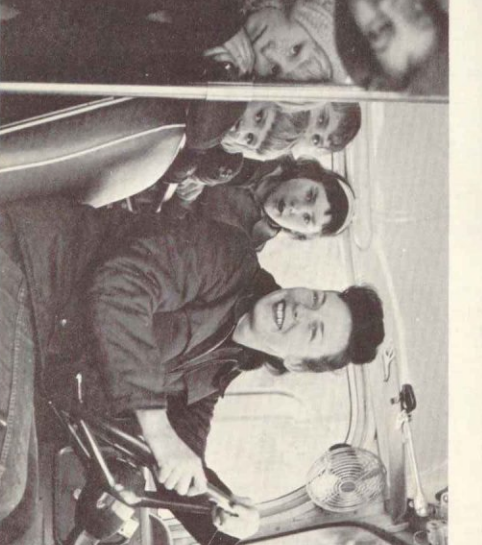
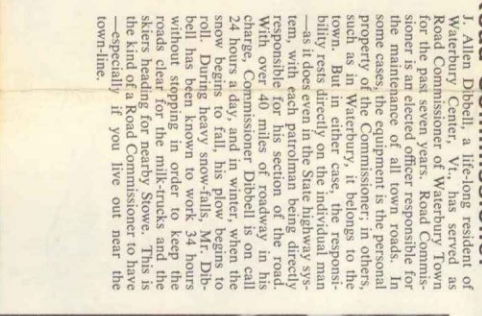
**Model**—The face of George A. Russell, M.D., of Alburgh, is well known to millions of Vermonters. He has been a model for 25 years. He has been a model for 25 years. He has been a model for 25 years.

**Road Commissioner**—J. Allen Dibel, a lifelong resident of Waterbury Center, Vt., has served as Vermont's Road Commissioner for 25 years. He has served as Vermont's Road Commissioner for 25 years. He has served as Vermont's Road Commissioner for 25 years.

**Housewife**—Mrs. Shirley Noble of Southbury, Vt., drives her car to school every day, picking up, controlling, and delivering 42 small packages in the process. She has been a housewife for 25 years. She has been a housewife for 25 years. She has been a housewife for 25 years.

**Countyman**—Levi Fowler of Montpelier and represents a pretty old tradition in Vermont—a man living the way he wants to. An expert carpenter, he has been a countyman for 25 years. He has been a countyman for 25 years. He has been a countyman for 25 years.

But each year, too, more and more non-skiers are discovering the unique satisfaction of a Vermont winter vacation. The villages and countryside never look together than under their heavy ruff of snow, and there is a sort of contagious frontier-spirit among these people who live so close to the weather. In the winter, people who for years have heard about the state's mild temperatures, now find Vermont winter to be a hard winter, and best of all, the roads are kept open. Not just the state roads, but most of all, the roads are kept open.







# COUNTRY AND URBAN LIVING at its Best

**GREEN MOUNTAIN LAND** provides abundant vacation sites and countless opportunities for industry within a few hours drive of the large centers of population in the East—Boston, Providence, Hartford, New York, Philadelphia, Buffalo, Ottawa, Montreal, etc. With the completion of the Thruways Vermont is within about a day's drive of more distant points—Washington, Pittsburgh, Cleveland, Detroit, Chicago.

VERMONT is a main gateway to New England from the North and West. In this area of nearly ten thousand square miles there are innumerable mountains and hills, hundreds of rivers and mountain brooks and several hundred lakes and ponds, large and small. In many cases highways follow valleys, close to river banks with green clad hills on either side; other roads lead into the hills, off the beaten paths, to scenes of cozy, homely, rural living. Everywhere there are close-ups or distant views of friendly mountains.

Much road building has been going on and there is now an excellent hard surfaced system reaching into all parts of the State. Many secondary highways are surfaced, others are gravelled with dust-layer used in the summer. Then there are the so-called town roads for those who like to explore.

**VERMONT LIFE** the State's beautiful quarterly magazine, with its many full-color pages, is a continuing portrait of Vermont, its scenes, people, institutions, ideas and accomplishments. Only \$1.85 a year. \$3.50 for two years; \$5.00 for three years. Address Vermont Life Magazine, Montpelier, Vt.

### VERMONT INDUSTRIES

Vermont industries are widely diversified, and the sizes of the manufacturing plants range from small artisan shops employing just a few people up to the world-famed industries employing hundreds. Highly skilled labor is prevalent in Vermont and is employed primarily in the machine tool, monumental, precision tool and electronics industries. In the last five years Vermont labor has been "discovered" by electronic industries as is exemplified by the three plants of General Electric and the International Business Machines operation.

The world's largest marble quarries are located in the Rutland-Fractor area. Located in the Barre area are the world's largest granite quarries, stone from which is noted for its very high quality. 95% of the Nation's asbestos is mined near Eden. Limestone deposits are extensively worked in the northwest quadrant of the State—particularly in Plymouth, Fractor, Swanton and Winooski. Slate is plentiful and of high quality in the Fair Haven-Poultney area. Talc is mined in several places, chiefly Johnson, Moretown and Chester.



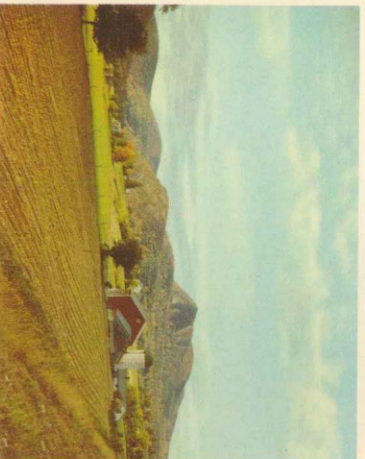
Furniture, plywood and wide varieties of wood and paper products have found the highly skilled Vermont "craftsmen" easily adaptable. The incidence of home ownership among Vermont workers is very high. Their proximity to the four season recreation areas leads to a stability and turn over rate that is second to none in the United States.

A complete Directory of Vermont Manufactured Products is yours for the asking at any information center or from the Industrial Development Division, Vermont Development Commission, Montpelier, or at either of the Vermont Information Centers located at 1268 Avenue of the Americas, New York City or Laurentien Hotel, Montreal.

### PLANT LOCATION SERVICES

The Vermont Development Commission is competently and adequately staffed to furnish you with complete packages on manufacturing cost comparisons; conduct research and arrange financing for any proposed plant.

Vermont communities are more than anxious to help you locate with us. There are over 155 active industrial development groups in the state prepared to act as financial catalysts in any new building program. All inquiries are handled in confidence and in a professional manner.



### VERMONT FARM PRODUCTS

(Revised as of Feb. 5, 1959)

Total Farms (1954)*	15,981
Dairy Farms (1954)†	9,930
Cattle Totals (1958)*	441,000
Milk Production (1957)* lbs.	1,766,000,000
Receipts—Dairy Products (1957)*	\$83,233,000
Receipts—Cattle & Calves Sold (1957)*	\$9,090,000
Eggs Produced (1957)*	192,000,000
Chickens on Farms (1958)*	986,000
Receipts—Eggs & Poultry Products Sold (Exclusive of Turkeys) (1957)*	\$8,463,000
Turkeys Produced (1957)*	107,000
Maple Trees Trapped (1958)*	1,954,000
Maple Syrup Crop (1958) (gallons)	567,000
Value of Maple Crop (1958)	\$2,250,000
Apple Crop (1958)* Bushels	1,070,000
Potato Crop (1958)* Cwt.	367,000
Farms with Electricity Available (1956)†	98.2%
Farms with Telephones (1956)†	76%
Total Area of State, Acres	5,937,920
Population (1950)†	377,747

\*U.S.D.A.E. and Vermont Department of Agriculture Figures

†U.S. Census Figures

### HISTORIC VERMONT

Vermont, having no coast line, was the last of the New England states to be settled. The Green Mountain area presented great hazards to the white men. It had been a favorite hunting and fishing ground for Indians and its valleys were routes for raiding parties from the North.

From time to time, hardy scouts penetrated this wilderness and returned to the colonies with stories of great forests, fertile lands, and magnificent scenery.

These founders of Vermont were of necessity self-reliant. Their independence of thought and action was marked from the beginning. While pressing for recognition of their rights, they organized a republic with a complete governmental set-up.

Traveling about Vermont, in villages and farm areas, one comes upon interesting examples of Colonial architecture, homes, churches, etc. Many old time structures, including covered bridges, have been preserved for posterity through the efforts of the Vermont Historic Sites Commission and by individuals notably, the Hyde Cabin in Grand Isle, the Coolidge Homestead in Plymouth and the Hubbardston Battlefield. The Bennington Battle Monument and museum, the Shelburne Museum south of Burlington on U. S. 7, and the treasures of the Vermont Historical Society in Montpelier are notable, but other collections should not be overlooked.

### VERMONT INFORMATION CENTER IN N. Y. C.

The Vermont Information Center, next door to Radio City Music Hall, 1268 Avenue of the Americas, is currently staffed to handle inquiries on vacations, recreation, Vermont products, complete plant location service, agriculture, and all Vermont information. Come in or phone: COLUMBUS 5-1450.

Pictures by Otten, Vermont Development Commission.

- 1. **ALLIS**  
Picnic, Tenting, Lean-tos, Road to summit, Scenic Views, Caretaker. N-5
- 2. **ASCOTNEY**  
Picnic, Tenting, Lean-tos, Hiking, Paved auto road to near summit, Scenic Views, Geological Interest, Caretaker. 0-6
- 3. **BRANDURY**  
Bath House, Swimming, Fire Beach, Picnic, Caretaker. (No Camping). 0-3
- 4. **BRIGHTON**  
Bathing, Picnic, Caretaker. (No Camping). K-8
- 5. **CRYSTAL LAKE**  
Bath House, Swimming, Excellent Beach, Picnic, Caretaker. L-7
- 6. **D.A.R.**  
Picnic, Tenting, Lean-tos, Boating, On Shore of Lake Champlain, Caretaker. N-2
- 7. **DARLING**  
Paved auto road to mountain top, Picnic, Tenting, Lean-tos, Hiking, Skiing, Geological Interest, Caretaker. L-8
- 8. **DUTTON PINES**  
Picnic, Caretaker. (No Camping). S-5
- 9. **ELMORE**  
Bath House, Swimming, Boating, Fishing, Picnic, Hiking, Caretaker. L-5
- 10. **EMERALD LAKE**  
Picnic, Camping (After July 1), Caretaker. 0-3
- 11. **GIFFORD WOODS**  
Picnic, Lean-tos, Tenting, Appalachian Foot Trail crosses park, Caretaker. P-4
- 12. **JAMAICA**  
Picnic, Bathing (undeveloped). R-5
- 13. **MOLLY STARK**  
Camping (After July 1), Caretaker. S-4
- 14. **MOUNDOS**  
Hiking, Bird Sanctuary (undeveloped). M-4
- 15. **MT. PHILO**  
Picnic, Paved road to Summit, Scenic Views, Foot Trails, Caretaker. (No Camping). 0-3
- 16. **ST. CATHERINE**  
Picnic, Good Beach, Bathing, Caretaker. (No Camping). K-3
- 17. **ST. ALBANS BAY**  
Bath House, Marina, Swimming, Beach, Picnic, Caretaker. (No Camping). L-3
- 18. **SAND BAR**  
Bath House, Swimming, Boating, Picnic, Tenting, Fishing, Caretaker. P-5
- 19. **SILVER LAKE**  
Bathing, Picnic, Caretaker. (No Camping). 0-6
- 20. **WILGUS**  
Picnic, Foot Trails, Caretaker. (No Camping).

### STATE FORESTS

- 21. **COOLIDGE (Piney Hollow)**  
Picnic, Tenting, Lean-tos, Hiking, Scenic Views, Caretaker. P-5
- 22. **COOLIDGE (Killington)**  
Skiing, Winter Caretaker. P-4
- 23. **GROTON**  
Three Peaks: Tenting, Lean-tos, Picnic, Fishing, Boating, Hiking, Caretaker. M-6
- 24. **JAY PEAK**  
Hiking, Skiing, Winter Caretaker. K-6
- 25. **MAJSTOKE**  
Bath House, Swimming, Picnic, Hiking, Fishing, Lean-tos, Caretaker. L-9
- 26. **MT. MANSFIELD (Smugglers Notch)**  
Picnic, Tenting, Lean-tos, Hiking, Road to mountain top, Geological and botanical interest, Skiing, Chair Lift, Caretaker. L-4
- 27. **MT. MANSFIELD (Underhill)**  
Picnic, Tenting, Lean-tos, Hiking, Scenic Views, Caretaker. L-4
- 28. **ORFEO**  
Skiing, Winter Caretaker. 0-4
- 29. **THEFORD HILL**  
Picnic, Scenic Views, Caretaker. (No Camping). 0-6
- 30. **TOWNSHEND**  
Picnic, Tenting, Swimming nearby, Caretaker. R-5

All developed state park and forest areas have fireplaces, good water tables and sanitary facilities. For further information and illustrated folder, write the:

**Department of Forests and Parks, Montpelier, Vermont.**  
FEES—Service and Maintenance fees at state parks and forests—50 cents per day per group of five persons or less, with or without car. \$2.50 per day per group of five persons or less, with or without car. BATH HOUSE LOCKERS—10 cents per person.  
(All fees subject to change without notice.)  
PARK HOURS—All of the state parks and forest recreational areas are open to the public between the hours of 10 AM and 6 PM during the summer season. Ski areas close at 5 PM.

### GREEN MOUNTAIN NATIONAL FOREST

- 31. **GREENDALE**  
Picnicking, Camping. 0-4
- 32. **HARPOOD POND**  
Swimming, Camping, Picnicking, Nature Trail. 0-4
- 33. **TEXAS FALLS**  
Picnicking, Improved Nature Trail to vantage point for view of Falls and gorge. 0-4
- 34. **WHITE ROCKS**  
Picnicking, Nature Trail to Lookoff Point, Interesting to Geologist and Botanist. 0-4

### HUNTING AND FISHING

Non-resident hunting and fishing licenses may be purchased from Town and City Clerks within the State. Fishing licenses may be secured also from sporting goods stores (3-day licenses only). Prices are reasonable for non-resident hunting licenses and for season, 14-day and 3-day fishing licenses.

Information on open seasons may be obtained from the places mentioned above, or from the Fish and Game Service, Montpelier, Vermont.

Spring and early summer offer the best trout and land-locked salmon fishing. Mid-summer and fall bring lake fishing and small mouth bass, pike, pickerel and pan fish, trout, too. Within Vermont's borders are innumerable fishing opportunities in 400 odd lakes and ponds and in the many streams.

Upland bird hunting is good in most sections in October. The waters of Lake Champlain are particularly popular among duck hunters each fall. During the open season on deer with three inch antlers, the recent average kill has been about 10,000 animals. Vermont also has a bow and arrow season on deer. A fish and game pamphlet will be delivered by the Town Clerk, when a license is obtained. For a copy of this pamphlet or for further information write the Vermont Fish and Game Service, Montpelier, Vermont.

### OTHER SPORTS

Lake Champlain more than makes up for the lack of a sea coast. It is noted for its spectacular sunsets and mountain backgrounds, scenic settings for resorts, cottages, camping areas and beaches. Large and small craft ply its waters. In addition there are over four hundred mountain-bound lakes and ponds.

The Long Trail extends along the mountain tops for over 250 miles. Many hikers take long or short walks on this seemingly wilderness footpath. Address Green Mountain Club, Rutland, Vermont.

There are over thirty golf courses in the State ranging from several of championship caliber to a very few of modest classification. These are well scattered so there is one or more within convenient driving distance.

The vales and glens of the foothills are popular among horseback riders. Boys and girls camps, several resorts and riding clubs feature stables of good mounts. Write Green Mountain Horse Association, South Woodstock, Vermont.

Many retired people have found desirable living in the hills and valleys. Others with long vacations have established country homes for part-time use. Vermont is indeed a "Way of Contented Living".

### KEEP VERMONT BEAUTIFUL!

Don't Be A Litterbug. . . .  
TRAVEL TRASH Cans are placed at intervals along Vermont highways. Use them to deposit your trash.



### VERMONT INFORMATION CENTER IN MONTREAL

A new Vermont Information Center to service the Canadian market has recently been opened co-operating with New Hampshire in the LAURENTIEN HOTEL. A competent, bi-lingual staff will handle inquiries on vacations, recreation, Vermont products, complete plant location service, agriculture and all Vermont information. Come in or phone.

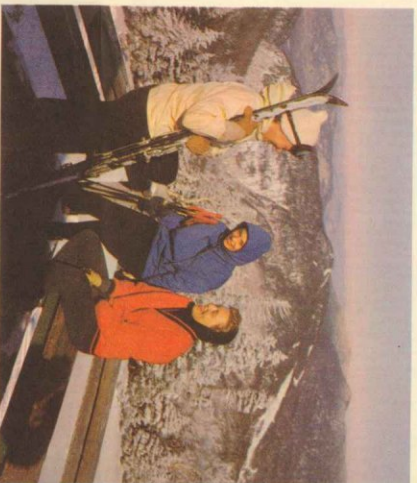
### WINTER SPORTS

Vermont winter sports are a major industry in the state with new ski areas being added and established ones being improved yearly. Today Vermont supports 30 major ski areas offering the best and latest in equipment, facilities and accommodations. There is just the right type of skiing available in Vermont for young and old, novice to expert.

The best snow conditions in the East for skiers are found along the Green Mountains from Massachusetts to Canada. Along the range the annual average snowfall reaches 120 inches. At lower elevations there are substantial snow depths. This means a long ski season.

Vermont's main and connecting highways are kept well plowed and sanded throughout the winter. Ski reports are carried in metropolitan papers and are available at travel centers in the Northeast, bus and railroad terminals, Vermont Information Center in New York and Montreal, Canada.

Throughout Vermont travelers find hospitable hotels, modern motels, tourist homes and roadside cabins. The stranger is assured of sanitary conditions through the unique inspection system of the State Department of Health. There are hundreds of housekeeping cabins for rent. The latter are for the most part on lake shores.



### CLIMATE

Vermont lies in that area of the Northeast which is classed as "cool" for summer vacations. In any season temperatures are variable. There are few oppressively humid days during the summers and evenings are uniformly cool. Day time temperatures sometimes register in the 80s and rarely in the low 90s. Nearly every night thermometers will go down into the 60s.

Fall brings many comfortably warm days with crisp nights. Because of the bracing atmosphere and the light traffic on the highways, many take vacations in Vermont at this time. In the low lands snow usually comes in late November, but there is not usually sufficient accumulation for skiing until late December.

During winter months there are many comfortable "overcoat days". The cold is not as penetrating as in areas where there is more humidity.

March and early April bring "Maple Sugar Time". Ideal weather for good "runs" of maple sap is when there is thawing in the daytime with freezing during the nights.

May is apple blossom time. It marks the time of the fresh green spring foliage and the opening of the fishing season. There are many summerlike days, a pleasant time for touring.

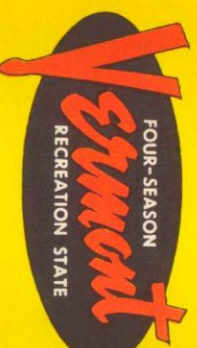
### FALL TOURS

Many thousands of people now enjoy the after Labor Day open roads of Vermont. Traffic is light, accommodations are uncrowded and in late September the glorious foliage for which Vermont is famous begins to appear, reaching its peak the first part of October. There are the comfortable days of "Indian Summer" accompanied by brisk nights. This is the popular time for the famous church suppers.

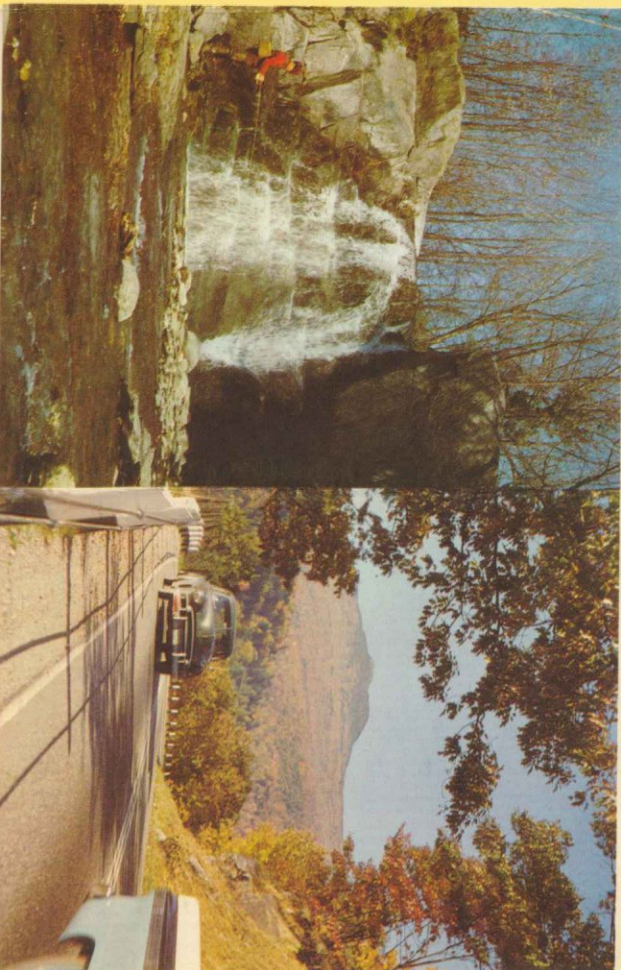
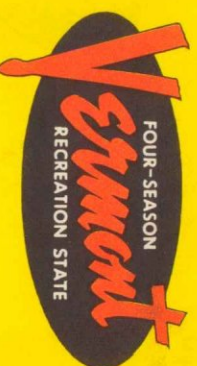
### INFORMATION BOOTHS

In communities near main gateways to Vermont, there are official information booths, approved by the Vermont Development Commission, where visitors can get up-to-the-minute information each summer about road conditions, things to see, routes, etc. The Highway Department issues periodic road condition maps to help travelers in avoiding construction. Weekly rolling bulletins are published in Vermont daily papers the first of each week. These are available at service stations, information booths, Chambers of Commerce, etc. There is an efficient Vermont State Police force on continuous duty ready to aid motorists.

### OFFICIAL HIGHWAY MAP



### OFFICIAL HIGHWAY MAP



Printed and Distributed by

VERMONT DEPARTMENT OF HIGHWAYS

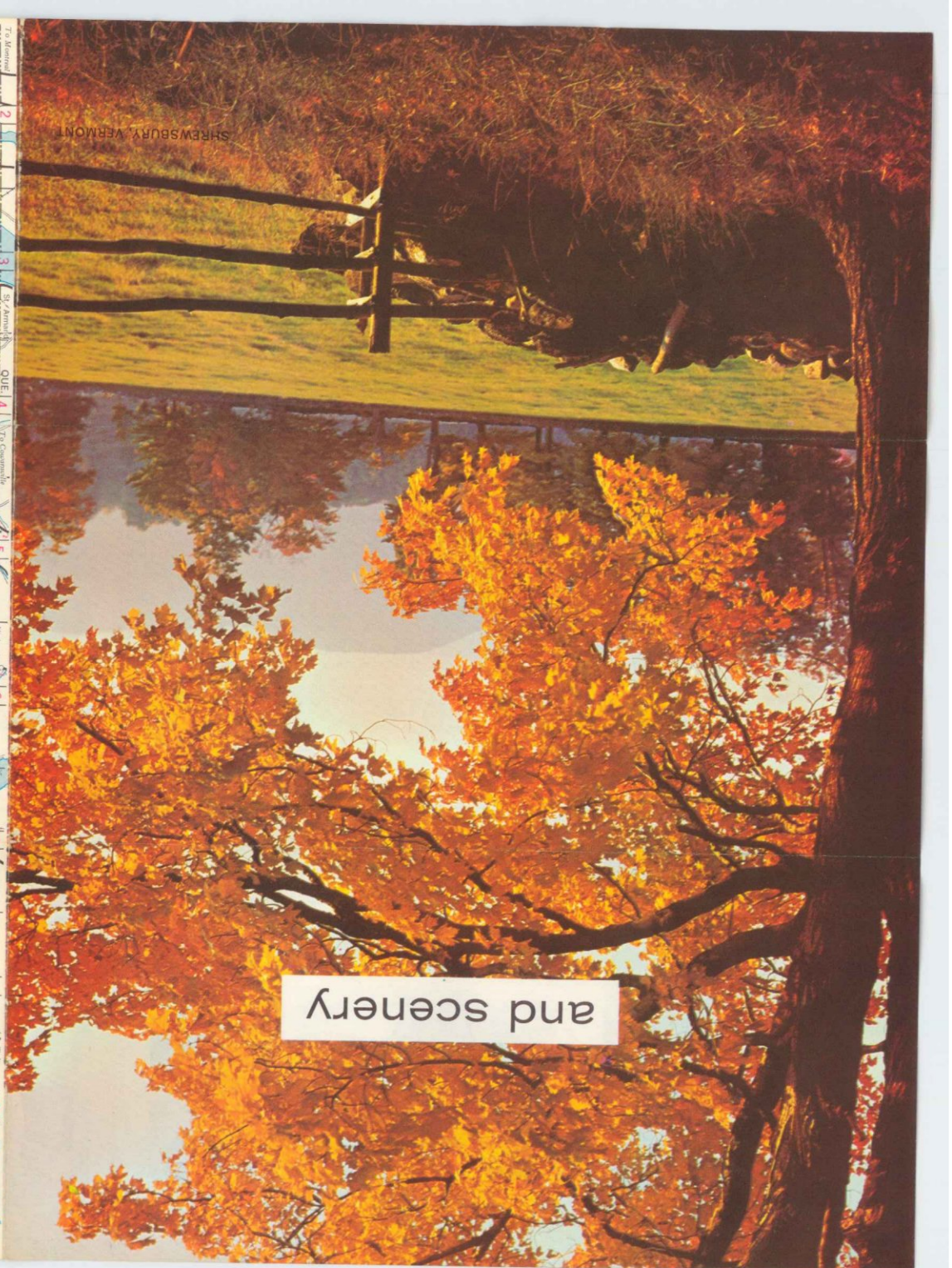
1960

Printed and Distributed by

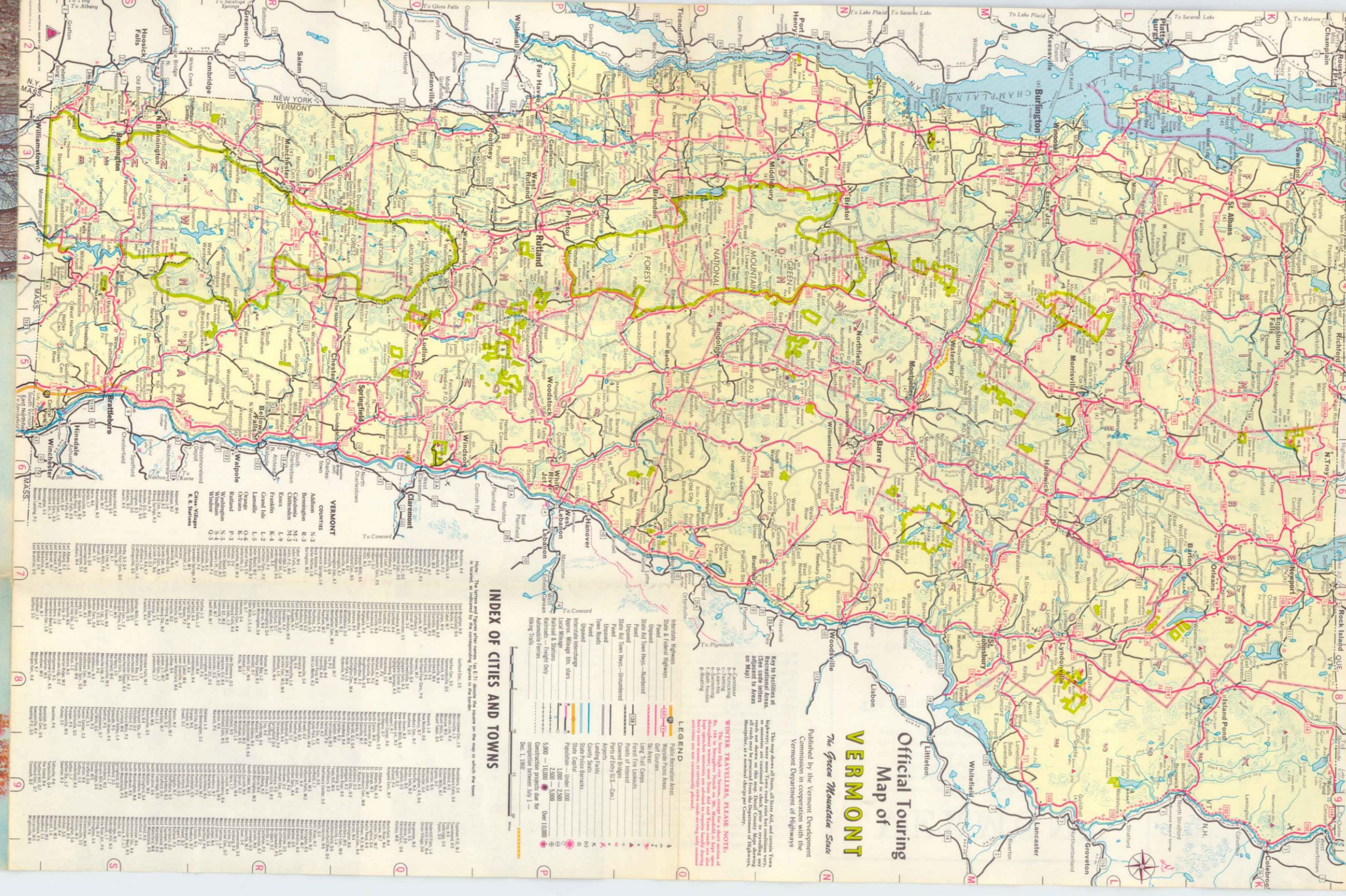
VERMONT DEPARTMENT OF HIGHWAYS

1960





and scenery



### INDEX OF CITIES AND TOWNS

Note: The letters and figures after centers (A, B, C) show the letters on the map which the town name is contained by the corresponding figure on the map.

City/Town	Letter	Figure
Academy	A	14
Adirondack Park	A	15
Adirondack Park	A	16
Adirondack Park	A	17
Adirondack Park	A	18
Adirondack Park	A	19
Adirondack Park	A	20
Adirondack Park	A	21
Adirondack Park	A	22
Adirondack Park	A	23
Adirondack Park	A	24
Adirondack Park	A	25
Adirondack Park	A	26
Adirondack Park	A	27
Adirondack Park	A	28
Adirondack Park	A	29
Adirondack Park	A	30
Adirondack Park	A	31
Adirondack Park	A	32
Adirondack Park	A	33
Adirondack Park	A	34
Adirondack Park	A	35
Adirondack Park	A	36
Adirondack Park	A	37
Adirondack Park	A	38
Adirondack Park	A	39
Adirondack Park	A	40
Adirondack Park	A	41
Adirondack Park	A	42
Adirondack Park	A	43
Adirondack Park	A	44
Adirondack Park	A	45
Adirondack Park	A	46
Adirondack Park	A	47
Adirondack Park	A	48
Adirondack Park	A	49
Adirondack Park	A	50
Adirondack Park	A	51
Adirondack Park	A	52
Adirondack Park	A	53
Adirondack Park	A	54
Adirondack Park	A	55
Adirondack Park	A	56
Adirondack Park	A	57
Adirondack Park	A	58
Adirondack Park	A	59
Adirondack Park	A	60
Adirondack Park	A	61
Adirondack Park	A	62
Adirondack Park	A	63
Adirondack Park	A	64
Adirondack Park	A	65
Adirondack Park	A	66
Adirondack Park	A	67
Adirondack Park	A	68
Adirondack Park	A	69
Adirondack Park	A	70
Adirondack Park	A	71
Adirondack Park	A	72
Adirondack Park	A	73
Adirondack Park	A	74
Adirondack Park	A	75
Adirondack Park	A	76
Adirondack Park	A	77
Adirondack Park	A	78
Adirondack Park	A	79
Adirondack Park	A	80
Adirondack Park	A	81
Adirondack Park	A	82
Adirondack Park	A	83
Adirondack Park	A	84
Adirondack Park	A	85
Adirondack Park	A	86
Adirondack Park	A	87
Adirondack Park	A	88
Adirondack Park	A	89
Adirondack Park	A	90
Adirondack Park	A	91
Adirondack Park	A	92
Adirondack Park	A	93
Adirondack Park	A	94
Adirondack Park	A	95
Adirondack Park	A	96
Adirondack Park	A	97
Adirondack Park	A	98
Adirondack Park	A	99
Adirondack Park	A	100

WEATHERSFIELD, VERMONT

OFFICIAL

# Vermont

TOURING MAP  
and BROCHURE

*The Ted Bernington W.D.D.  
"Go-it-Alone" edition  
of 1960.*

-A\*-

PANTON, VERMONT

EAST CORNHILL, VERMONT

OFFICIAL

# Vermont

TOURING MAP  
and BROCHURE

WELLS RIVER, VERMONT

Why visit

# Vermont?

VERMONT — The Green Mountain State

VERMONT DEVELOPMENT COMMISSION  
200 State House, Montpelier, Vermont

VERMONT DEVELOPMENT COMMISSION  
200 State House, Montpelier, Vermont

VERMONT DEVELOPMENT COMMISSION  
200 State House, Montpelier, Vermont