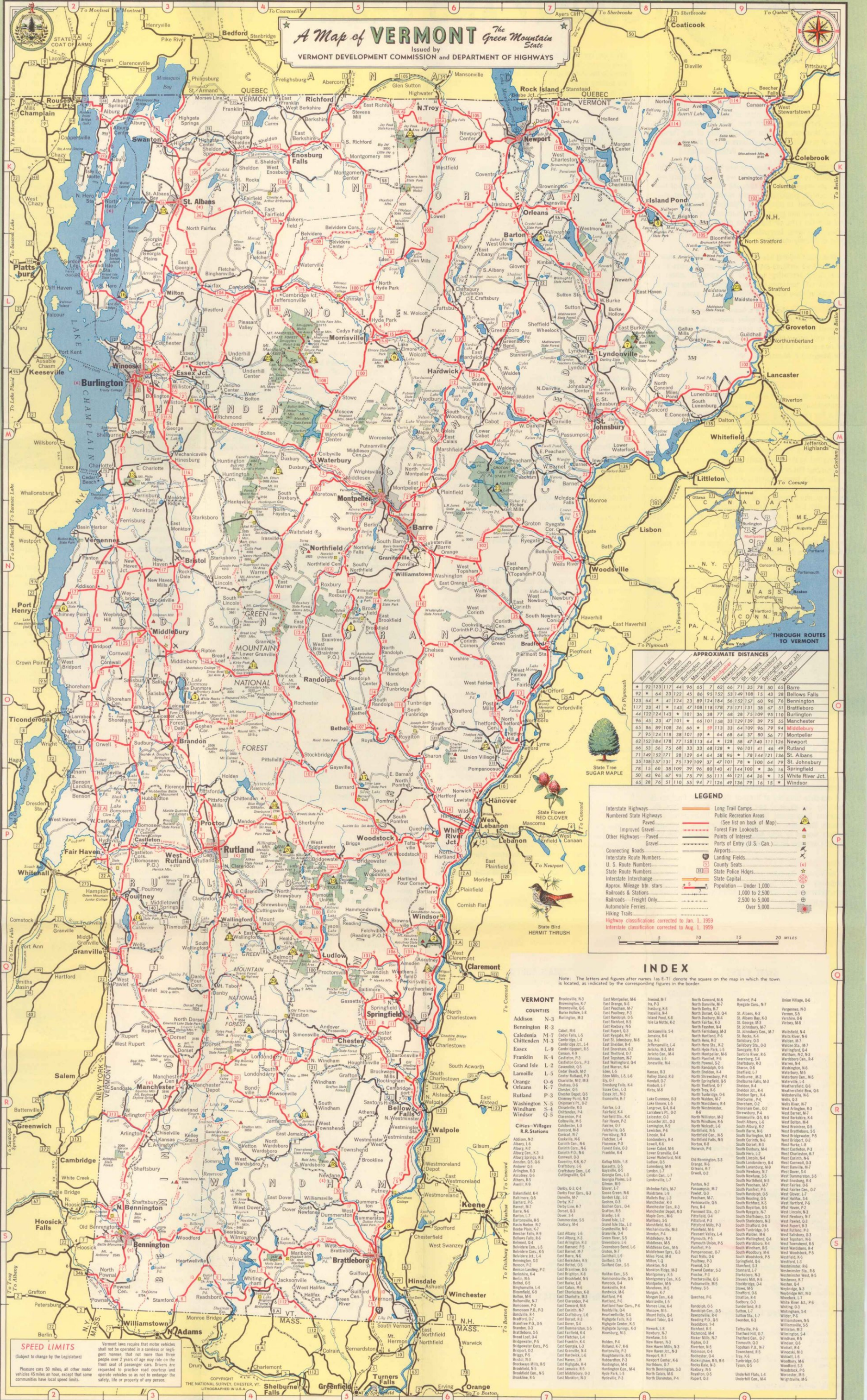


A Map of VERMONT *The Green Mountain State*

Issued by
VERMONT DEVELOPMENT COMMISSION and DEPARTMENT OF HIGHWAYS



APPROXIMATE DISTANCES

	Barre	Burlington	Montpelier	Rutland	St. Albans	St. Johnsbury	White River Jct.
Barre	92	123	117	44	65	7	62
Burlington	64	23	127	45	80	93	132
Montpelier	123	64	41	124	29	124	54
Rutland	117	23	41	47	108	178	73
St. Albans	44	122	124	143	101	36	37
St. Johnsbury	65	84	89	108	36	66	39
White River Jct.	7	93	124	118	38	101	59
Barre	62	152	184	178	77	158	113
Burlington	66	53	56	75	68	33	68
Montpelier	71	149	152	171	28	129	64
Rutland	35	108	157	131	75	139	109
St. Albans	78	15	60	38	109	39	96
St. Johnsbury	50	43	96	67	93	75	51
White River Jct.	65	28	76	51	110	53	44

LEGEND

- Interstate Highways
- Numbered State Highways
- Improved Gravel
- Other Highways - Paved
- Connecting Roads
- Interstate Route Numbers
- U.S. Route Numbers
- State Route Numbers
- Interstate Interchange
- Approx. Mileage b/n stars
- Railroads & Stations
- Railroads - Freight Only
- Automobile Ferries
- Highway Trails
- Long Trail Camps
- Public Recreation Areas
- Forest Fire Lookouts
- Points of Interest
- Ports of Entry (U.S. - Can.)
- Airports
- Landing Fields
- County Seats
- State Police Hdqrs.
- State Capital
- Population - Under 1,000
- 1,000 to 2,500
- 2,500 to 5,000
- Over 5,000

INDEX

Note: The letters and figures after names (A-E, 7) denote the square on the map in which the town is located, as indicated by the corresponding figures in the border.

VERMONT	COUNTIES	R.R. Stations	VERMONT	COUNTIES	R.R. Stations
Brookline, N.3	Essex, N.3	Essex, N.3	Essex, N.3	Essex, N.3	Essex, N.3
Brownville, N.3	Franklin, K.4	Franklin, K.4	Franklin, K.4	Franklin, K.4	Franklin, K.4
...

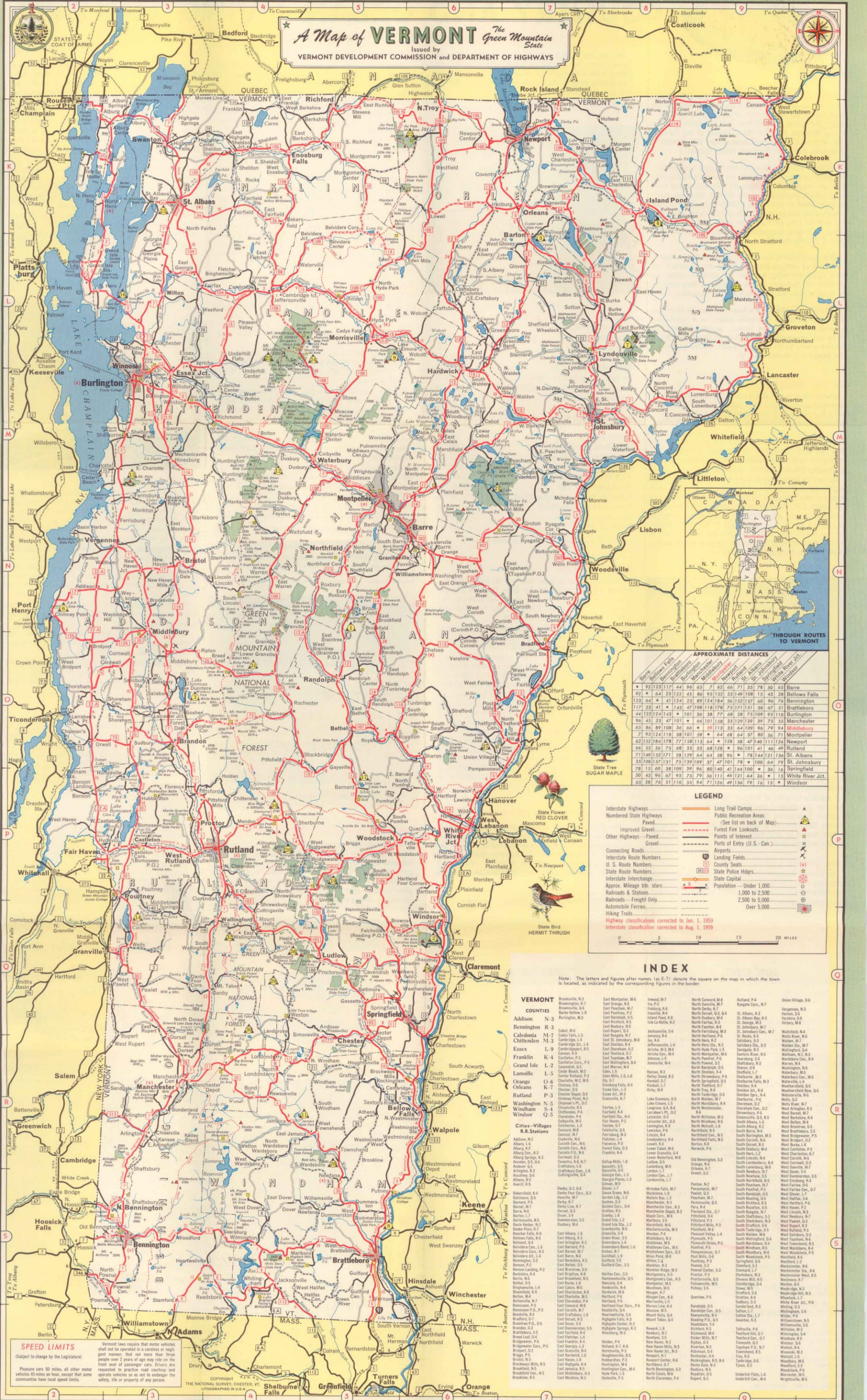
SPEED LIMITS

Vermont laws require that motor vehicles shall not be operated in a careless or negligent manner, that not more than three people over 2 years of age may ride on the front seat of passenger cars. Drivers are requested to practice road courtesy and operate vehicles so as not to endanger the safety, life or property of any person.

COPYRIGHT THE NATIONAL SURVEY, CHESTER, VT. LITHOGRAPHED IN U.S.A.

A Map of VERMONT *The Green Mountain State*

Issued by
VERMONT DEVELOPMENT COMMISSION and DEPARTMENT OF HIGHWAYS



APPROXIMATE DISTANCES

	Barre	Burlington	Montpelier	Rutland	St. Albans	St. Johnsbury	White River Jct.
Barre	92	123	117	44	65	7	62
Burlington	64	23	127	45	80	93	132
Montpelier	123	64	41	124	29	124	54
Rutland	117	23	41	47	108	178	73
St. Albans	44	122	124	143	101	36	37
St. Johnsbury	65	84	89	108	36	66	39
White River Jct.	7	93	124	118	38	101	59
Barre	62	152	184	178	77	158	113
Burlington	66	53	56	75	68	33	68
Montpelier	71	149	152	171	28	129	64
Rutland	35	108	157	131	75	139	109
St. Albans	78	15	60	38	109	39	96
St. Johnsbury	50	43	96	67	93	75	51
White River Jct.	65	28	76	51	110	53	44

LEGEND

- Interstate Highways
- Numbered State Highways
- Improved Gravel
- Other Highways - Paved
- Connecting Roads
- Interstate Route Numbers
- U.S. Route Numbers
- State Route Numbers
- Interstate Interchange
- Approx. Mileage b/n stars
- Railroads & Stations
- Railroads - Freight Only
- Automobile Ferries
- Highway Trails
- Long Trail Camps
- Public Recreation Areas
- Forest Fire Lookouts
- Points of Interest
- Ports of Entry (U.S. - Can.)
- Airports
- Landing Fields
- County Seats
- State Police Hdqrs.
- State Capital
- Population - Under 1,000
- 1,000 to 2,500
- 2,500 to 5,000
- Over 5,000

INDEX

Note: The letters and figures after names (A-E, 7) denote the square on the map in which the town is located, as indicated by the corresponding figures in the border.

VERMONT	COUNTIES	R.R. Stations	VERMONT	COUNTIES	R.R. Stations
Brookline, N.3	Essex, N.3	Essex, N.3	Essex, N.3	Essex, N.3	Essex, N.3
Brownville, N.3	Franklin, K.4	Franklin, K.4	Franklin, K.4	Franklin, K.4	Franklin, K.4
...

SPEED LIMITS

Vermont laws require that motor vehicles shall not be operated in a careless or negligent manner, that not more than three people over 2 years of age may ride on the front seat of passenger cars. Drivers are requested to practice road courtesy and operate vehicles so as to not endanger the safety, life or property of any person.

PLEASE CAR 50 miles, all other motor vehicles 45 miles an hour, except that some communities have local speed limits.



COUNTRY AND URBAN LIVING at its Best

GREEN MOUNTAIN LAND provides abundant vacation sites and countless opportunities for industry within a few hours drive of the large centers of population in the East — Boston, Providence, Hartford, New York, Philadelphia, Buffalo, Ottawa, Montreal, etc. With the completion of the Thruways Vermont is within about a day's drive of more distant points — Washington, Pittsburgh, Cleveland, Detroit, Chicago.

VERMONT is a main gateway to New England from the North and West. In this area of nearly ten thousand square miles there are innumerable mountains and hills, hundreds of rivers and mountain brooks and several hundred lakes and ponds, large and small. In many cases highways follow valleys, close to river banks with green clad hills on either side; other roads lead into the hills, off the beaten paths, to scenes of cozy, homey, rural living. Everywhere there are close-ups or distant views of friendly mountains.

Much road building has been going on and there is now an excellent hard surfaced system reaching into all parts of the State. Many secondary highways are surfaced, others are gravelled with dust-layer used in the summer. Then there are the so-called town roads for those who like to explore.

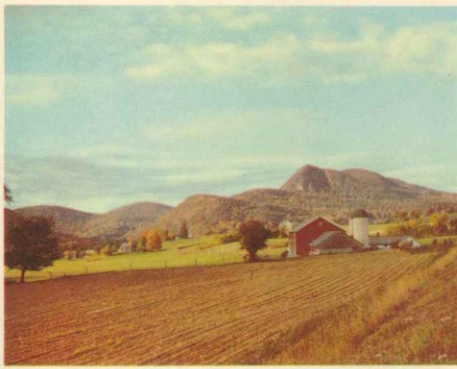
VERMONT LIFE the State's beautiful quarterly magazine, with its many full-color pages, is a continuing portrait of Vermont, its scenes, people, institutions, ideas and accomplishments. Only \$1.85 a year; \$3.50 for two years; \$5.00 for three years. Address Vermont Life Magazine, Montpelier, Vt.

VERMONT INDUSTRIES

Vermont industries are widely diversified, and the sizes of the manufacturing plants range from small artisan shops employing just a few people up to the world-famed industries employing hundreds. Highly skilled labor is prevalent in Vermont and is employed primarily in the machine tool, monumental, precision tool and electronics industries. In the last five years Vermont labor has been "discovered" by electronic industries as is exemplified by the three plants of General Electric and the International Business Machines operation.

The world's largest marble quarries are located in the Rutland-Proctor area. Located in the Barre area, are the world's largest granite quarries, stone from which is noted for its very high quality. 95% of the Nation's asbestos is mined near Eden. Limestone deposits are extensively worked in the northwest quadrant of the State — particularly in Plymouth, Proctor, Swanton and Winooski. Slate is plentiful and of high quality in the Fair Haven-Poultney area. Talc is mined in several places, chiefly Johnson, Moretown and Chester.

Vermont communities are more than anxious to help you locate with us. There are over 55 active industrial development groups in the state prepared to act as financial catalysts in any new building program. All inquiries are handled in confidence and in a professional manner.



VERMONT FARM PRODUCTS

(Revised as of Feb. 5, 1959)

Total Farms (1954)†	15,981
Dairy Farms (1954)†	9,930
Cattle Totals (1958)*	441,000
Milk Production (1957)* lbs.	1,766,000,000
Receipts — Dairy Products (1957)*	\$83,233,000
Receipts — Cattle & Calves Sold (1957)*	\$9,090,000
Eggs Produced (1957)*	192,000,000
Chickens on Farms (1958)*	986,000
Receipts — Eggs & Poultry Products Sold (Exclusive of Turkeys) (1957)*	\$8,463,000
Turkeys Produced (1957)*	107,000
Maple Trees Tapped (1958)*	1,954,000
Maple Syrup Crop (1958) (gallons)	567,000
Value of Maple Crop (1958)	\$2,250,000
Apple Crop (1958)* Bushels	1,070,000
Potato Crop (1958)* Cwt.	367,000
Farms with Electricity Available (1956)†	98.2%
Farms with Telephones (1956)†	76%
Total Area of State, Acres	5,937,920
Population (1950)†	377,747

† U.S. Census Figures
* U.S.D.A.B.A.E. and Vermont Department of Agriculture Figures

HISTORIC VERMONT

Vermont, having no coast line, was the last of the New England states to be settled. The Green Mountain area presented great hazards to the white men. It had been a favorite hunting and fishing ground for Indians and its valleys were routes for raiding parties from the North.

From time to time, hardy scouts penetrated this wilderness and returned to the colonies with stories of great forests, fertile lands, and magnificent scenery.

These founders of Vermont were of necessity self-reliant. Their independence of thought and action was marked from the beginning. While pressing for recognition of their rights, they organized a republic with a complete governmental set-up.

Traveling about Vermont, in villages and farm areas, one comes upon interesting examples of Colonial architecture, homes, churches, etc. Many old time structures, including covered bridges, have been preserved for posterity through the efforts of the Vermont Historic Sites Commission and by individuals notably, the Hyde Cabin in Grand Isle, the Coolidge Homestead in Plymouth and the Hubbardton Battlefield. The Bennington Battle Monument and museum, the Shelburne Museum south of Burlington on U. S. 7, and the treasures of the Vermont Historical Society in Montpelier are notable, but other collections should not be overlooked.

VERMONT INFORMATION CENTER IN N. Y. C.

The Vermont Information Center, next door to Radio City Music Hall, 1268 Avenue of the Americas, is competently staffed to handle inquiries on vacations, recreation, Vermont products, complete plant location service, agriculture, and all Vermont information. Come in or phone: COLUMBUS 5-3948 and COLUMBUS 5-8342.

Pictures by Orton, Vermont Development Commission.

HUNTING AND FISHING

Non-resident hunting and fishing licenses may be purchased from Town and City Clerks within the State. Fishing licenses may be secured also from sporting goods stores (3-day licenses only). Prices are reasonable for non-resident hunting licenses and for season, 14-day and 3-day fishing licenses.

Information on open seasons may be obtained from the places mentioned above, or from the Fish and Game Service, Montpelier, Vermont.

Spring and early summer offer the best trout and land-locked salmon fishing. Mid-summer and fall bring lake fishing and small mouth bass, pike, pickerel and pan fish; trout, too. Within Vermont's borders are innumerable fishing opportunities in 400 odd lakes and ponds and in the many streams.

Upland bird hunting is good in most sections in October. The waters of Lake Champlain are particularly popular among duck hunters each fall. During the open season on deer with three inch antlers, the recent average kill has been about 10,000 animals. Vermont also has a bow and arrow season on deer. A fish and game pamphlet will be delivered by the Town Clerk, when a license is obtained. For a copy of this pamphlet or for further information write the Vermont Fish and Game Service, Montpelier, Vermont.

OTHER SPORTS

Lake Champlain more than makes up for the lack of a sea-coast. It is noted for its spectacular sunsets and mountain backgrounds, scenic settings for resorts, cottages, camping areas and beaches. Large and small craft ply its waters. In addition there are over four hundred mountain-bound lakes and ponds.

The Long Trail extends along the mountain tops for over 250 miles. Many hikers take long or short walks on this seemingly wilderness footpath. Address Green Mountain Club, Rutland, Vermont.

There are over thirty golf courses in the State ranging from several of championship caliber to a very few of modest classification. These are well scattered so there is one or more within convenient driving distance.

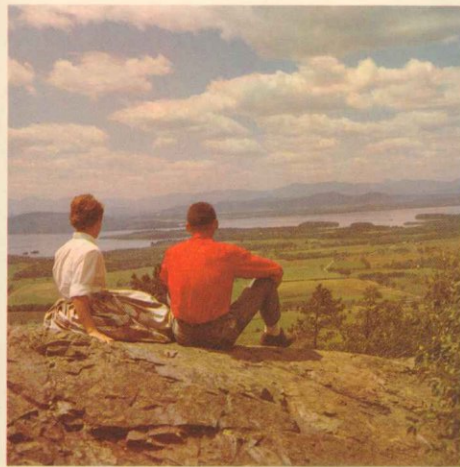
The vales and glens of the foothills are popular among horseback riders. Boys and girls camps, several resorts and riding clubs feature stables of good mounts. Write Green Mountain Horse Association, South Woodstock, Vermont.

Many retired people have found desirable living in the hills and valleys. Others with long vacations have established country homes for part-time use. Vermont is indeed a "Way of Contented Living".

KEEP VERMONT BEAUTIFUL!

Don't Be A Litterbug. . .

TRAVEL TRASH Cans are placed at intervals along Vermont highways. Use them to deposit your trash.



VERMONT INFORMATION CENTER IN MONTREAL

A new Vermont Information Center to service the Canadian market has recently been opened cooperating with New Hampshire in the LAURENTIEN HOTEL. A competent, bi-lingual staff will handle inquiries on vacations, recreation, Vermont products, complete plant location service, agriculture and all Vermont information. Come in or phone.

WINTER SPORTS

Vermont winter sports are a major industry in the state with new ski areas being added and established ones being improved yearly. Today Vermont supports 30 major ski areas offering the best and latest in equipment, facilities and accommodations. There is just the right type of skiing available in Vermont for young and old, novice to expert.

The best snow conditions in the East for skiers are found along the Green Mountains from Massachusetts to Canada. Along the range the annual average snowfall reaches 120 inches. At lower elevations there are substantial snow depths. This means a long ski season.

Vermont's main and connecting highways are kept well plowed and sanded throughout the winter. Ski reports are carried in metropolitan papers and are available at travel centers in the Northeast, bus and railroad terminals, Vermont Information Center in New York and Montreal, Canada.

Throughout Vermont travelers find hospitable hotels, modern motels, tourist homes and roadside cabins. The stranger is assured of sanitary conditions through the unique inspection system of the State Department of Health. There are hundreds of housekeeping cabins for rent. The latter are for the most part on lake shores.



CLIMATE

Vermont lies in that area of the Northeast which is classed as "cool" for summer vacations. In any season temperatures are variable. There are few oppressively humid days during the summers and evenings are uniformly cool. Day time temperatures sometimes register in the 80s and rarely in the low 90s. Nearly every night thermometers will go down into the 60s.

Fall brings many comfortably warm days with crisp nights. Because of the bracing atmosphere and the light traffic on the highways, many take vacations in Vermont at this time. In the low lands snow usually comes in late November, but there is not usually sufficient accumulation for skiing until late December.

During winter months there are many comfortable "overcoat days". The cold is not as penetrating as in areas where there is more humidity.

March and early April bring "Maple Sugar Time". Ideal weather for good "runs" of maple sap is when there is thawing in the daytime with freezing during the nights.

May is apple blossom time. It marks the time of the fresh green spring foliage and the opening of the fishing season. There are many summerlike days, a pleasant time for touring.

FALL TOURS

Many thousands of people now enjoy the after Labor Day open roads of Vermont. Traffic is light, accommodations are uncrowded and in late September the glorious foliage for which Vermont is famous begins to appear, reaching its peak the first part of October. There are the comfortable days of "Indian Summer" accompanied by brisk nights. This is the popular time for the famous church suppers.

INFORMATION BOOTHS

In communities near main gateways to Vermont there are official information booths, approved by the Vermont Development Commission, where visitors can get up-to-the-minute information each summer about road conditions, things to see, routes, etc. The Highway Department issues periodic road condition maps to help travelers in avoiding construction. Weekly oiling bulletins are published in Vermont daily papers the first of each week. These are available at service stations, information booths, Chambers of Commerce, etc. There is an efficient Vermont State Police force on continuous duty ready to aid motorists.

Public Parks, Campgrounds and Forest Recreation Areas

STATE PARKS

(Number on Map precedes. Index location follows.)

- 1. ALLIS** N-5
Picnic, Tenting, Lean-tos, Road to summit, Scenic Views, Caretaker.
- 2. ASCUTNEY** Q-6
Picnic, Tenting, Lean-tos, Hiking, Paved auto road to near summit, Scenic Views, Geological interest, Caretaker.
- 3. BRANBURY** O-3
Bath House, Swimming, Fine Beach, Picnic, Caretaker. (No Camping.)
- 4. BRIGHTON** K-8
Bathing, Caretaker. (No Camping.)
- 5. CRYSTAL LAKE** L-7
Bath House, Swimming, Excellent Beach, Picnic, Caretaker. (No Camping.)
- 6. D.A.R.** N-2
Picnic, Tenting, Boating, On Shore of Lake Champlain, Caretaker.
- 7. DARLING** L-8
Paved auto road to mountain top, Picnic, Tenting, Lean-tos, Hiking, Skiing, Geological Interest, Caretaker.
- 8. DUTTON PINES** S-5
Picnic, Caretaker. (No Camping.)
- 9. ELMORE** L-5
Bath House, Swimming, Boating, Fishing, Picnic, Hiking, Caretaker. (No Camping.)
- 10. GIFFORD WOODS** P-4
Picnic, Lean-tos, Tenting, Appalachian Foot Trail crosses park, Caretaker.
- 11. JAMAICA** R-5
Picnic, Bathing (undeveloped).
- 12. MONROE** M-4
Hiking, Bird Sanctuary (undeveloped).
- 13. MT. PHILO** M-3
Picnic, Paved road to Summit, Scenic Views, Foot Trails, Caretaker. (No Camping.)
- 14. ST. CATHERINE** Q-3
Picnic, Good Beach, Bathing, Caretaker. (No Camping.)
- 15. ST. ALBANS BAY** K-3
Bath House, Marina, Swimming, Beach, Picnic, Caretaker. (No Camping.)
- 16. SAND BAR** L-3
Bath House, Swimming, Boating, Picnic, Tenting, Fishing, Caretaker.
- 17. SILVER LAKE** P-5
Bathing, Caretaker. (No Camping.)
- 18. WILGUS** Q-6
Picnic, Foot Trails, Caretaker. (No Camping.)

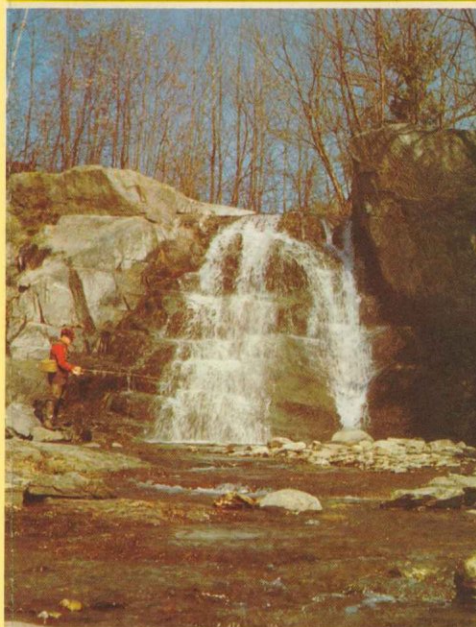
STATE FORESTS

- 19. COOLIDGE (Pinney Hollow)** P-5
Picnic, Tenting, Lean-tos, Hiking, Scenic Views, Caretaker.
 - 20. COOLIDGE (Killington)** P-4
Skiing, Winter Caretaker.
 - 21. GROTON** M-6
Three Areas: Tenting, Lean-tos, Picnic, Fishing, Boating, Hiking, Caretaker.
 - 22. JAY PEAK** K-6
Hiking, Skiing, Winter Caretaker.
 - 23. MAIDSTONE** L-9
Bath House, Swimming, Picnic, Hiking, Fishing, Lean-tos, Caretaker.
 - 24. MT. MANSFIELD (Smugglers Notch)** L-4
Picnic, Tenting, Lean-tos, Hiking, Road to mountain top, Geological and botanical interest, Skiing, Chair Lift, Caretaker.
 - 25. MT. MANSFIELD (Underhill)** L-4
Picnic, Tenting, Lean-tos, Hiking, Scenic Views, Caretaker.
 - 26. OKEMO** Q-4
Skiing, Winter Caretaker.
 - 27. THETFORD HILL** O-6
Picnic, Scenic Views, Caretaker. (No Camping.)
 - 28. TOWNSHEND** R-5
Picnic, Tenting, Swimming nearby, Caretaker.
- All developed state park and forest areas have fireplaces, good water, tables and sanitary facilities. For further information and illustrated folder, write the:
Department of Forests and Parks, Montpelier, Vermont.
- FEES.—Service and Maintenance fees at state parks and forests—50 cents per day per group of five persons or less, with or without car. Camp Sites—tent floors, trailers—\$1.50. Green Mtn. lean-tos—\$2.50 per day per group of five persons or less, with or without car. BATH HOUSE LOCKERS—10 cents per person. (All fees subject to change without notice.)
- PARK HOURS.—All of the state parks and forest recreational areas are open to the public between the hours of 10 AM and 8 PM during the summer season. Ski areas close at 5 PM.

GREEN MOUNTAIN NATIONAL FOREST

- 29. GREENDALE** Q-4
Picnicking, Camping.
 - 30. HAPGOOD POND** Q-4
Swimming, Camping, Picnicking, Nature Trail.
 - 31. TEXAS FALLS** O-4
Picnicking, Improved Nature Trail to vantage point for view of Falls and Gorge.
 - 32. WHITE ROCKS** Q-4
Picnicking, Nature Trail to Lookoff Point, Interesting to Geologist and Botanist.
- For illustrated folder or further information write Supervisor, Green Mountain National Forest, Rutland, Vermont.

OFFICIAL HIGHWAY MAP



Printed and Distributed by
VERMONT DEPARTMENT OF HIGHWAYS
and
VERMONT DEVELOPMENT COMMISSION
1959-1960

OFFICIAL HIGHWAY MAP



Printed and Distributed by
VERMONT DEVELOPMENT COMMISSION
and
VERMONT DEPARTMENT OF HIGHWAYS
1959-1960