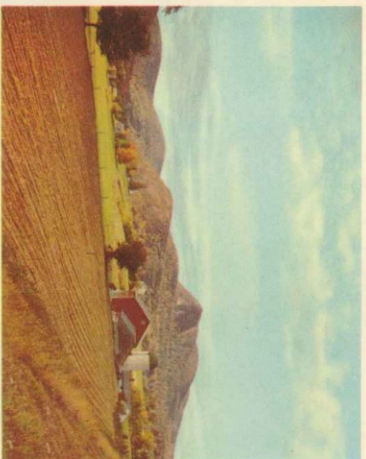




COUNTRY AND URBAN LIVING at its Best

Vermont communities are more than anxious to help you locate with us. There are over 55 active industrial development groups in the state prepared to act as financial catalysts in any new building program. All inquiries are handled in confidence and in a professional manner.



Non-resident hunting and fishing licenses may be purchased from Town and City Clerks within the State. Fishing licenses may be secured also from sporting goods stores (3-day licenses only). Prices are reasonable for non-resident hunting licenses and for season, 14-day and 3-day fishing licenses.

Information on open seasons may be obtained from the placers mentioned above, or from the Fish and Game Service, Montpelier, Vermont.

Spring and early summer offer the best trout and land-locked salmon fishing. Mid-summer and fall bring lake fishing and small mouth bass, pike, pickerel and pan fish, trout, too. Within Vermont's borders are innumerable fishing opportunities in 400 odd lakes and ponds and in the many streams.

Upland bird hunting is good in most sections in October. The waters of Lake Champlain are particularly popular among duck hunters each fall. During the open season on deer with three inch antlers, the recent average kill has been about 10,000 animals. Vermont also has a bow and arrow season on deer. A fish and game pamphlet will be delivered by the Town Clerk, when a license is obtained. For a copy of this pamphlet or for further information write the Vermont Fish and Game Service, Montpelier, Vermont.

WINTER SPORTS

Vermont winter sports are a major industry in the state with new ski areas being added and established ones being improved yearly. Today Vermont supports 30 major ski areas offering the best and latest in equipment, facilities and accommodations. There is just the right type of skiing available in Vermont for young and old, novice to expert.

The best snow conditions in the East for skiers are found along the Green Mountains from Massachusetts to Canada. Along the range the annual average snowfall reaches 120 inches. At lower elevations there are substantial snow depths. This means a long ski season.

Vermont's main and connecting highways are kept well plowed and sanded throughout the winter. Ski reports are carried in metropolitan papers and are available at travel centers in the Northeast, bus and railroad terminals, Vermont Information Center in New York and Montreal, Canada.

Throughout Vermont travelers find hospitable hotels, modern motels, tourist homes and roadside cabins. The stranger is assured of sanitary conditions through the unique inspection system of the State Department of Health. There are hundreds of housekeeping cabins for rent. The latter are for the most part on lake shores.

VERMONT FARM PRODUCTS

(Revised as of Feb. 5, 1959)

Total Farms (1954)†	15,981
Dairy Farms (1954)†	9,930
Cattle Totals (1958)*	441,000
Milk Production (1957)* lbs.	1,765,000,000
Receipts — Dairy Products (1957)*	\$83,233,000
Receipts — Cattle & Calves Sold (1957)*	\$9,090,000
Eggs Produced (1957)*	192,000,000
Receipts on Farms (1958)*	986,000
Receipts — Eggs & Poultry Products Sold (Exclusive of Turkeys) (1957)*	\$8,463,000
Turkeys Produced (1957)*	107,000
Maple Trees Tapped (1958)*	1,954,000
Maple Syrup Crop (1958) (gallons)	567,000
Maple Syrup Crop (1958) (gallons)	\$2,250,000
Apple Crop (1958)* Bushels	1,070,000
Potato Crop (1958)* Cwt.	367,000
Farms with Electricity Available (1956)†	98.2%
Farms with Telephones (1956)†	76%
Total Area of State Acres	5,937,920
Population (1950)†	377,747

†U.S. Census Bureau and Vermont Department of Agriculture Figures

HISTORIC VERMONT

Vermont, having no coast line, was the last of the New England states to be settled. The Green Mountain area presented great hazards to the white men. It had been a favorite hunting and fishing ground for Indians and its valleys were routes for raiding parties from the North.

From time to time, hardy scouts penetrated this wilderness and returned to the colonies with stories of great forests, fertile lands, and magnificent scenery.

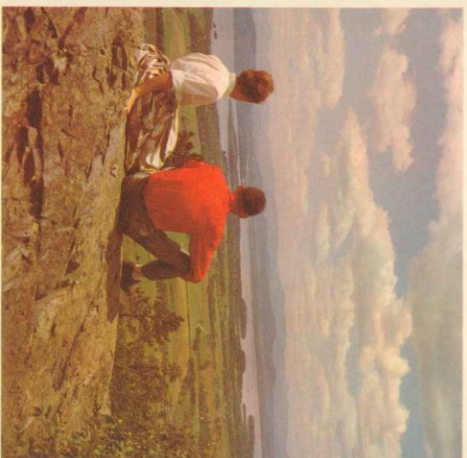
These founders of Vermont were of necessity self-reliant. Their independence of thought and action was marked from the beginning. While pressing for recognition of their rights, they organized a republic with a complete governmental set-up.

Traveling about Vermont, in villages and farm areas, one comes upon interesting examples of Colonial architecture, homes, churches, etc. Many old time structures, including covered bridges, have been preserved for posterity through the efforts of the Vermont Historic Sites Commission and by individuals notably, the Hyde Cabin in Grand Isle, the Coolidge Homestead in Plymouth and the Hubbardton Battlefield. The Bennington Battle Monument and museum, the Shelburne Museum south of Burlington on U. S. 7, and the treasurers of the Vermont Historical Society in Montpelier are notable, but other collections should not be overlooked.

VERMONT INFORMATION CENTER IN N. Y. C.

The Vermont Information Center, next door to Radio City Music Hall, 1268 Avenue of the Americas, is conveniently staffed to handle inquiries on vacations, recreation, Vermont products, complete plant location service, agriculture, and all Vermont information. Come in or phone: COLUMBUS 5-3948 and COLUMBUS 5-8342.

Pictures by Otten, Vermont Development Commission.



KEEP VERMONT BEAUTIFUL!

Don't Be A Litterbug....
TRAVEL TRASH Cans are placed at intervals along Vermont highways. Use them to deposit your trash.

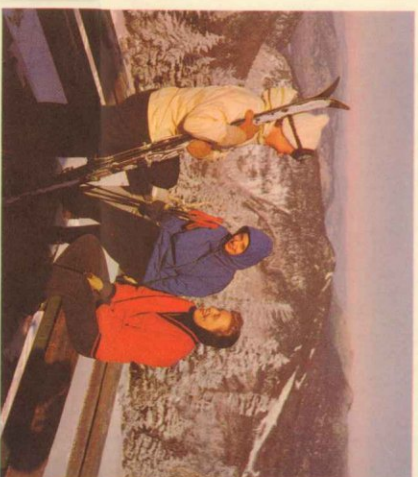
Lake Champlain more than makes up for the lack of a sea coast. It is noted for its spectacular sunsets and mountain backgrounds, scenic settings for resorts, cottages, camping areas and beaches. Large and small craft ply its waters. In addition there are over four hundred mountain-bound lakes and ponds.

The Long Trail extends along the mountain tops for over 250 miles. Many hikers take long or short walks on this seemingly wilderness footpath. Address: Green Mountain Club, Rutland, Vermont.

There are over thirty golf courses in the State ranging from several of championship caliber to a very few of modest classification. These are well scattered so there is one or more within convenient driving distance.

The vales and glens of the foothills are popular among horseback riders. Boys and girls camps, several resorts and riding clubs feature stables of good mounts. Write Green Mountain Horse Association, South Woodstock, Vermont.

Many retired people have found desirable living in the hills and valleys. Others with long vacations have established country homes for part-time use. Vermont is indeed a "Way of Contented Living".



CLIMATE

Vermont lies in that area of the Northeast which is classed as "cool" for summer vacations. In any season temperatures are variable. There are few oppressively humid days during the summers and evenings are uniformly cool. Day time temperatures sometimes register in the 80s and rarely in the low 90s. Nearly every night, thermometers will go down into the 60s.

Fall brings many comfortably warm days with crisp nights. Because of the bracing atmosphere and the light traffic on the highways, many take vacations in Vermont at this time. In the low lands snow usually comes in late November, but there is not usually sufficient accumulation for skiing until late December.

During winter months there are many comfortable "overcoat days". The cold is not as penetrating as in areas where there is more humidity.

March and early April bring "Maple Sugar Time". Ideal weather for good "runs" of maple sap is when there is thawing in the daytime with freezing during the nights.

May is apple blossom time. It marks the time of the fresh green spring foliage and the opening of the fishing season. There are many summertime days, a pleasant time for touring.

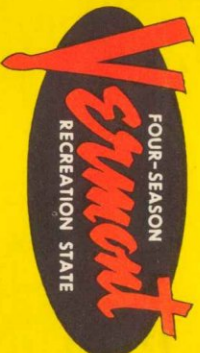
FALL TOURS

Many thousands of people now enjoy the after Labor Day open roads of Vermont. Traffic is light, accommodations are uncrowded and in late September the glorious foliage for which Vermont is famous begins to appear, reaching its peak the first part of October. There are the comfortable days of "Indian Summer," accompanied by brisk nights. This is the popular time for the famous church suppers.

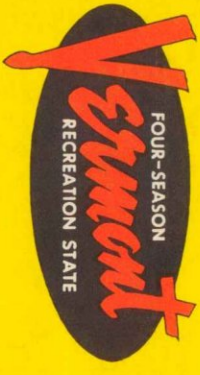
INFORMATION BOOTHS

In communities near main gateways to Vermont there are official information booths, approved by the Vermont Development Commission, where visitors can get up-to-the-minute information each summer about road conditions, things to see, routes, etc. The Highway Department issues periodic road condition maps to help travelers in avoiding construction. Weekly oiling bulletins are published in Vermont daily papers the first of each week. These are available at service stations, information booths, Chambers of Commerce, etc. There is an efficient Vermont State Police force on continuous duty ready to aid motorists.

OFFICIAL HIGHWAY MAP



OFFICIAL HIGHWAY MAP



- 1. ALUIS**
Picnic, Tenting, Lean-tos, Road to summit, Scenic Views, Caretaker. N-5
- 2. ASCUTNEY**
Picnic, Tenting, Lean-tos, Hiking, Paved auto road to near summit, Scenic Views, Geological interest, Caretaker. Q-6
- 3. BRAUNBURY**
Bath House, Swimming, Fine Beach, Picnic, Caretaker. (No Camping). Q-3
- 4. BRIGHTON**
Bathing, Caretaker. (No Camping). K-8
- 5. CRYSTAL LAKE**
Bath House, Swimming, Excellent Beach, Picnic, Caretaker. L-7
- 6. D.A.R.**
Picnic, Tenting, Boating, On Shore of Lake Champlain, Caretaker. N-2
- 7. DARLING**
Paved auto road to mountain top, Picnic, Tenting, Lean-tos, Hiking, Skiing, Geological Interest, Caretaker. L-8
- 8. DUTTON PINES**
Picnic, Caretaker. (No Camping). S-5
- 9. ELMORE**
Bath House, Swimming, Boating, Fishing, Picnic, Hiking, Caretaker. (No Camping). L-5
- 10. GIFFORD WOODS**
Picnic, Lean-tos, Tenting, Appalachian Foot Trail crosses park, Caretaker. P-4
- 11. JAMAICA**
Picnic, Bathing (undeveloped). R-5
- 12. MONROE**
Hiking, Bird Sanctuary (undeveloped). M-4
- 13. MT. PHILLO**
Picnic, Paved road to Summit, Scenic Views, Foot Trails, Caretaker. (No Camping). M-3
- 14. ST. CATHERINE**
Picnic, Good Beach, Bathing, Caretaker. (No Camping). Q-3
- 15. ST. ALBANS BAY**
Bath House, Marina, Swimming, Beach, Picnic, Caretaker. (No Camping). K-3
- 16. SAND BAR**
Bath House, Swimming, Boating, Picnic, Tenting, Fishing, Caretaker. L-3
- 17. SILVER LAKE**
Bathing, Caretaker. (No Camping). P-5
- 18. WILGUS**
Picnic, Foot Trails, Caretaker. (No Camping). Q-6

Public Parks, Campgrounds and Forest Recreation Areas

STATE PARKS

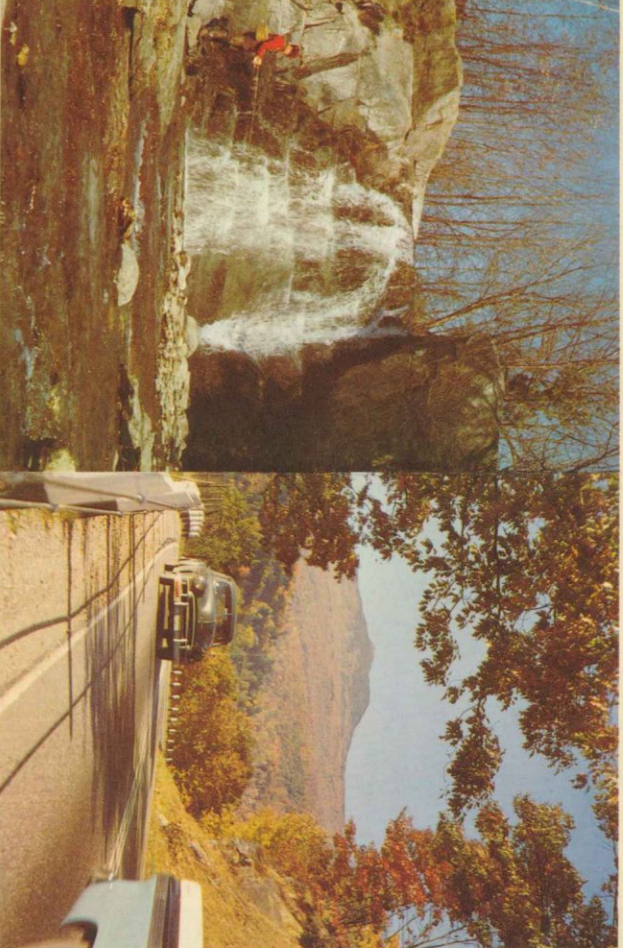
- (Number on Map precedes. Index location follows.)
- 1. ALUIS**
Picnic, Tenting, Lean-tos, Road to summit, Scenic Views, Caretaker. N-5
- 2. ASCUTNEY**
Picnic, Tenting, Lean-tos, Hiking, Paved auto road to near summit, Scenic Views, Geological interest, Caretaker. Q-6
- 3. BRAUNBURY**
Bath House, Swimming, Fine Beach, Picnic, Caretaker. (No Camping). Q-3
- 4. BRIGHTON**
Bathing, Caretaker. (No Camping). K-8
- 5. CRYSTAL LAKE**
Bath House, Swimming, Excellent Beach, Picnic, Caretaker. L-7
- 6. D.A.R.**
Picnic, Tenting, Boating, On Shore of Lake Champlain, Caretaker. N-2
- 7. DARLING**
Paved auto road to mountain top, Picnic, Tenting, Lean-tos, Hiking, Skiing, Geological Interest, Caretaker. L-8
- 8. DUTTON PINES**
Picnic, Caretaker. (No Camping). S-5
- 9. ELMORE**
Bath House, Swimming, Boating, Fishing, Picnic, Hiking, Caretaker. (No Camping). L-5
- 10. GIFFORD WOODS**
Picnic, Lean-tos, Tenting, Appalachian Foot Trail crosses park, Caretaker. P-4
- 11. JAMAICA**
Picnic, Bathing (undeveloped). R-5
- 12. MONROE**
Hiking, Bird Sanctuary (undeveloped). M-4
- 13. MT. PHILLO**
Picnic, Paved road to Summit, Scenic Views, Foot Trails, Caretaker. (No Camping). M-3
- 14. ST. CATHERINE**
Picnic, Good Beach, Bathing, Caretaker. (No Camping). Q-3
- 15. ST. ALBANS BAY**
Bath House, Marina, Swimming, Beach, Picnic, Caretaker. (No Camping). K-3
- 16. SAND BAR**
Bath House, Swimming, Boating, Picnic, Tenting, Fishing, Caretaker. L-3
- 17. SILVER LAKE**
Bathing, Caretaker. (No Camping). P-5
- 18. WILGUS**
Picnic, Foot Trails, Caretaker. (No Camping). Q-6

STATE FORESTS

- 19. COULIDGE (Pinney Hollow)**
Picnic, Tenting, Lean-tos, Hiking, Scenic Views, Caretaker. P-4
 - 20. COULIDGE (Killingbourn)**
Skiing, Winter Caretaker. M-6
 - 21. GROTON**
Three Areas: Tenting, Lean-tos, Picnic, Fishing, Boating, Hiking, Caretaker. K-6
 - 22. JAY PEAK**
Hiking, Skiing, Winter Caretaker. L-9
 - 23. MADSTONE**
Bath House, Swimming, Picnic, Hiking, Fishing, Lean-tos, Caretaker. L-4
 - 24. MT. MANSHFIELD (Smugglers Notch)**
Picnic, Tenting, Lean-tos, Hiking, Road to mountain top, Geological and Botanical interest, Skiing, Chair Lift, Caretaker. L-4
 - 25. MT. MANSHFIELD (Underhill)**
Picnic, Tenting, Lean-tos, Hiking, Scenic Views, Caretaker. L-4
 - 26. OREMO**
Skiing, Winter Caretaker. Q-4
 - 27. TRETTROD HILL**
Picnic, Scenic Views, Caretaker. (No Camping). Q-6
 - 28. TOWNSEND**
Picnic, Tenting, Swimming nearby, Caretaker. R-5
- All developed state park and forest areas have fireplaces, good water, tables and sanitary facilities. For further information and illustrated folder, write the
- Department of Forests and Parks, Montpelier, Vermont.
- FEES—Service and Maintenance fees at state parks and forests—50 cents per day per group of five persons or less, with or without car. \$2.00. Stays—tent floors, trailers—\$1.50, Green Min. lean-tos—\$2.00. Ranger per group of five persons or less, with or without car. All TRAILS—LOCKERS—10 cents per person.
- PARK HOUSES—All of our camps and forest recreational areas except the public use state parks and 110 AM and 9 PM during the summer season. Ski areas close at 5 PM.

GREEN MOUNTAIN NATIONAL FOREST

- 29. GREENDALE**
Picnicking, Camping. Q-4
 - 30. HAREPOOD POND**
Swimming, Camping, Picnicking, Nature Trail. Q-4
 - 31. TEXAS FALLS**
Picnicking, Improved Nature Trail to vantage point for view of Falls and gorge. Q-4
 - 32. WHITE ROCKS**
Picnicking, Nature Trail to Lookout Point, Interesting to Geologist and Botanist. Q-4
- For illustrated folder or further information write Supervisor, Green Mountain National Forest, Rutland, Vermont.



Printed and Distributed by
VERMONT DEPARTMENT OF HIGHWAYS
VERMONT DEVELOPMENT COMMISSION
1959-1960

Printed and Distributed by
VERMONT DEVELOPMENT COMMISSION
VERMONT DEPARTMENT OF HIGHWAYS
1959-1960