

Vermont...for AGRICULTURE...for INDUSTRY...for RECREATION!

GREEN MOUNTAIN LAND lies within reasonable driving distance of the large population centers of the EAST—Boston, Providence, Hartford, New York, Philadelphia, Buffalo, Ottawa, Montreal etc. It is a main gateway to New England from points to the North and to the West.

In a compact area of nearly ten thousand square miles, there are countless elevations, un-numbered brooks and rivers and several hundreds of lakes and ponds, large and small. Usually highways follow river valleys with green clad hills on either side. There are close and distant views of the friendly mountains.

Neat farms and villages bear witness that living is good in this rural area. Vermont has been called not a state but a "Way of Life." It is true that most Vermonters enjoy all the benefits of country life with modern conveniences. Thousands enjoy vacations in their own summer homes.

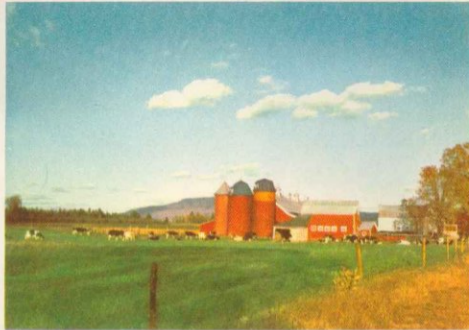
Throughout Vermont the traveler will find hospitable hotels, motels, tourist homes and roadside cabins. These are all subject to a unique sanitary inspection by the State Department of Health. Also there are hundreds of house-keeping cabins for rent, mostly along lake shores.

People seek recreation here at all times of the year. The several winter sports areas provide up to the minute facilities. In spring, maple sugar making and fishing attract many. Summer months are delightful for comfortable climate and variety of amusements. Thousands have become aware of the hunting and the glorious fall foliage.

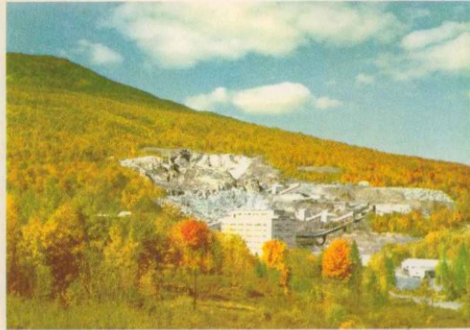
There is an excellent system of roads. All main lines are hard surfaced. There are many miles of good gravel highways, treated with dust layer. For those who wish to explore there are the so-called "town roads" often leading into remote places of scenic grandeur.

At, or near, main gateways and at other convenient points there are Official Information Booths operating during the summer season and in some cases into the fall. Visitors are urged to consult the experienced attendants about routes, points of interest, accommodations, etc. The Highway Department issues periodically road condition maps, which will be found at gas stations, hotels, etc., and the official booths. These help travelers in avoiding construction.

An efficient State Police Force is ready to help motorists at any time of the day or night.



"Chore Time" — Typical Vermont Farm Scene



Vermont Asbestos Mines

VERMONT FARM PRODUCTS

Total Farms (U.S. Census 1950)	19,043
Dairy Farms (U.S. Census 1950)	10,823
Cattle Total (1954)*	489,000
Annual Milk Production (1952)* Lbs.	1,531,000,000
Annual Receipts—Dairy Products (1952)*	\$76,918,000
Eggs Produced (1952)*	171,000,000
Chickens on Farms (1954)*	1,012,000
Annual Receipts Eggs and Poultry Products Sold (Exclusive of Turkeys) (1952)*	\$9,638,000
Turkeys Produced (1949)	332,000
Maple Trees Tapped (1953)*	2,784,000
Maple Sugar Crop (1952)* Lbs.	53,000
Maple Syrup Crop (1952)* Gals.	664,000
Value of Maple Crop (1952)*	\$2,700,000
Apple Crop (1953)* Bushels	1,015,000
Potato Crop (1953)* Bushels	836,000
Percent of Farms with Electricity Available (U.S. Census 1950)	92%
Percent of Farms with Telephones (U.S. Census 1950)	70%
Total Area of State, Acres	5,937,920
Population (1950 Census)	377,747

*From U. S. D. A., B. A. E. and Vermont Department of Agriculture

VERMONT INDUSTRIES

Vermont produces 96% of the asbestos, 40% of the structural and monumental marble, 33% of the monumental granite, and 10% of the machines tools in the United States. Vermont has industrialized more rapidly than any other New England State. Within recent years, nationally known concerns such as General Electric, National Carbon, Van Ralste, Cornish Wire and many others have opened branch operations in Vermont. They have found that the craftsmanship and reliability of Vermonter workmen have given them production records that are outstanding.

Vermont's green and white villages are friendly pleasant places to live all year round. While you are in Vermont for fun and recreation, consider the advantages offered to your company by a Vermont location. The pleasures you are enjoying on your vacation can be yours every day of the year, if your work or your business was located within this industrially expanding state. The Industrial Section of the Vermont Development Commission is located at the new State Office Building in Montpelier. You are cordially invited to visit or write Vermont Development Commission to inquire about industrial sites, buildings, and special industrial financing.

ment Commission to inquire about industrial sites, buildings, and special industrial financing.

The variety and quality of Vermont craftsmanship as shown by the products of the hundreds of small manufacturers throughout the State are worthy of consideration. To find a special product that a Vermont manufacturer is making, ask for the Vermont Directory of Manufactured Products at any information center.

CLIMATE

Temperatures in Vermont in any season are variable. In summer there are few oppressively humid days and in winter the very cold days are accompanied by a dry atmospheric condition.

For summer vacations the state lies in that area classed as "cool." Days are usually comfortably warm and nights are that degree of coolness conducive to sound sleep and rest. Temperatures from June 1 through August may reach into the eighties and infrequently the low nineties; the night averages are in the sixties.

Fall days are cooler and traffic is lighter; nights are uniformly crisp through September, October and November. There are many pleasantly warm days through this period.

A "white" Thanksgiving is frequently, but not always enjoyed; a "White Christmas" is a fairly sure thing. In this winter period there are a few nights with the mercury standing below zero, but during those days it rises to ten or fifteen above at mid-day.

Late March and early April is the period when maple sap is running, ideal for this being a period of warm days with freezing night temperatures. May is delightful, with the clear days and fresh green of the foliage. In spring average temperatures will run in the high forties and low fifties with many summerlike days.

GREEN MOUNTAIN LAND IS A WAY OF LIFE



FALL TOURS

Many thousands are now choosing September and October for vacations. This is especially true during the magnificent Fall foliage time. The leaves begin to turn in Mid-September and reach their peak in early October. Then Nature has transformed the summer green to variegated scenes of brilliant shades of red and yellow, mixed with brown and the deep green of the conifers.



HUNTING AND FISHING

Non-resident hunting and fishing licenses may be purchased from town and city clerks within the state. Fishing licenses may be secured also from sporting goods stores (3-day licenses only). Prices are reasonable for non-resident season, 14-day and 3-day fishing privileges and for hunting licenses.

Information on open seasons may be obtained from the places mentioned above, or from the Fish and Game Service, Montpelier, Vt.

Spring and early summer offer the best trout and land-locked salmon fishing. Mid-summer and fall bring lake fishing for small mouth bass, pike, pickerel and pan fish. Within Vermont's borders are innumerable fishing opportunities in 400 odd lakes and ponds and in the many streams.

Upland bird hunting is good in most sections in October. The waters of Lake Champlain are particularly popular among duck hunters each fall. During the open season on deer with three inch antlers, the recent average kill has been about seven thousand animals. Numbers of foxes and raccoons are taken annually. A fish and game pamphlet will be delivered by the town clerk when a license is obtained. For a copy of this pamphlet or for further information write the Vermont Fish and Game Service, Montpelier, Vermont.



THE LONG TRAIL

Extending from Massachusetts to the Canadian border is the famous Long Trail, a marked footpath with shelters at convenient intervals, following the mountain tops for over 250 miles. Hikers find it convenient for day trips or longer tours. There are hills to climb and woods to explore throughout the State.



HORSE BACK RIDING

The foothills of the Green Mountains, with vales and glens reached by back roads mostly of gravel, provide entrancing opportunities for day trips of exploration. There are several resorts featuring riding and complete information may be obtained from the Green Mountain Horse Association, South Woodstock, Vermont.



WATER SPORTS

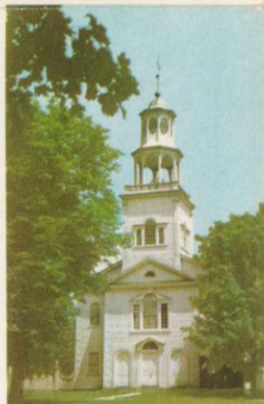
Vermont's lack of a seacoast is more than made up by the waters of Lake Champlain, noted for its spectacular sunsets, and of several hundred other mountain bound lakes. These provide spots in scenic settings for resorts, camps, camping, boating, bathing, etc. Large yachts and small craft are numerous on Champlain; motor boats and outboards are extensively used elsewhere.



SUMMER HOMES

Advantages of country living have attracted hundreds to Vermont. Throughout the State there are retirement homes where owners find abundant life possible on limited income. They appreciate the value of good neighbors, a premium on modern rural living.

HISTORIC VERMONT



Vermont, having no coast line, was the last of the New England states to be settled. The Green mountain area presented great hazards to the white men. It had been a favorite hunting and fishing ground for Indians and its valleys were routes to the Colonies for raiding parties from the north.

From time to time, hardy scouts penetrated this wilderness and returned to the Colonies with stories of heavy forests, fertile lands, and magnificent scenery. It was the land which attracted in those days and before the dangers were entirely gone, venturesome pioneers from southern New England began to clear away the trees.

These founders of Vermont were of necessity self-reliant; their independence of thought and action was marked from the beginning. While pressing for recognition of their rights, they organized a republic with a complete governmental set-up.

Traveling about Vermont, in villages and in farm areas, one finds interesting examples of Colonial architecture, homes and churches. There are numbers of museums and historic sites worthy of attention.

SPEED LIMITS

(Subject to change by the 1955 Legislature)

Pleasure cars 50 miles an hour; all other motor vehicles 45 miles an hour, except that some communities have local speed limits.

Vermont laws require that motor vehicles shall not be operated in a careless or negligent manner; that not more than three people over 2 years of age may ride on the front seat of passenger cars. Drivers are requested to practice road courtesy and operate vehicles so as not to endanger the safety, life or property of any person.

INFORMATION

For help with your travel plans write Vermont Development Commission, State Office Building, Montpelier, Vt.

In New York inquire of Vermont Information Center, 1268 Avenue of the Americas, Phone COLUMBUS 5-3948. At Radio City Music Hall.

WINTER SPORTS

There are about thirty-five winter sports centers and the Vermont Development Commission publishes each year a convenient guide.

Over a period of twenty years there have been improvements in the way of accommodations and installations for the convenience of enthusiasts. The best snow conditions for sports in the East are found along the Green Mountain chain. At the highest elevations the annual average fall is about 120 inches and the best sport lasts from mid-December into April.

Vermont's main and connecting highways are kept well plowed and sanded throughout the winter months. This is primarily for the practical reason that vast quantities of milk must get to markets in metropolitan areas and secondarily so that motorists can get around. This is all to the good in the minds of the recreation bound skiers, thousands in number who drive to this popular skiing area.



GOLF

The rolling countryside is particularly adapted to the laying out of sporty golf courses. There are thirty-five in the State, six having eighteen holes. A few are of championship classification. All are interesting to play, even that one which is termed a "duffer course." Seldom crowded, there are no long waits to drive off and it is usually possible to play along at convenient speed.

Public Forests, Parks, Campgrounds and Recreation Areas

STATE FORESTS

- COOLIDGE (Pinney Hollow)** D-10
Picnic, Tenting, Lean-tos, Hiking, Scenic Views, Caretaker.
- COOLIDGE (Northam)** D-10
Picnic, Scenic Views, Caretaker.
- GROTON** F-6
Three Areas. Tenting, Picnic, Fishing, Hiking, Caretaker.
- MAIDSTONE** J-4
Bath House, Swimming, Picnic, Hiking, Fishing, Lean-tos, Caretaker.
- MT. MANSFIELD (Smugglers Notch)** D-4
Picnic, Tenting, Lean-tos, Hiking, Road to mountain top, Skiing, Chair Lift, Caretaker.
- MT. MANSFIELD (Underhill)** C-4
Picnic, Tenting, Lean-tos, Hiking, Scenic Views, Caretaker.
- THETFORD HILL** F-8
Picnic, Scenic Views, Caretaker.
- TOWNSHEND** D-13
Picnic, Tenting, Swimming nearby, Caretaker.

STATE PARKS

- ALLIS** D-7
Picnic, Tenting, Road to Summit, Scenic Views, Caretaker.
- ASCUTNEY** E-10
Picnic, Tenting, Hiking, Paved auto road to near summit, Scenic Views, Geological Interest, Caretaker.
- BRANBURY** C-8
Bath House, Swimming, Fine Beach, Picnic, Caretaker. No Camping.
- CRYSTAL LAKE** F-3
Bath House, Swimming, Excellent Beach, Picnic, Caretaker.
- D.A.R.** A-7
Picnic, Caretaker.
- DARLING** G-4
Paved auto road to mountain top, Picnic, Tenting, Lean-tos, Hiking, Skiing, of Geological Interest, Caretaker.
- DUTTON PINES** E-13
Picnic, Caretaker.
- ELMORE** E-4
Bath House, Swimming, Boating, Fishing, Picnic, Hiking, Caretaker. No Camping.
- GIFFORD WOODS** D-9
Picnic, Lean-tos, Tenting, Appalachian Foot Trail crosses park, Caretaker.
- JAMAICA** D-12
Picnic, Bathing (undeveloped).
- MONROE** C-5
Hiking, Bird Sanctuary (undeveloped).

STATE PARKS (continued)

- MT. PHILO** B-6
Picnic, Tenting, Paved road to Summit, Scenic Views, Foot Trails, Caretaker.
- ST. CATHERINE** B-10
Picnic, Good Beach, Bathing, Caretaker. No Camping.
- ST. ALBANS BAY** B-3
Bath House, Swimming, Beach, Picnic, Caretaker. No Camping.
- SAND BAR** B-4
Bath House, Swimming, Boating, Picnic, Tenting, Fishing, Caretaker.
- SILVER LAKE** D-9
Picnic, Bathing, Caretaker.
- WILGUS** E-11
Picnic, Foot Trails, Caretaker.

All state park and forest areas have fireplaces, good water, picnic tables and sanitary facilities. For further information and illustrated folder, write the: Vermont Forest Service, Montpelier, Vermont.

FEES — Service and Maintenance fees at state parks and forests — 50 cents per day per car of five persons or less. Camp Sites — tent floors, trailers—\$1.00; lean-tos—\$1.50 per day per car of five persons or less.

BATH HOUSE LOCKERS — 10 cents per person.

PARK HOURS — All of the state forest and forest park areas are open to the public between the hours of 10 A.M. and 8 P.M. during the summer season.

GREEN MOUNTAIN NATIONAL FOREST

- TEXAS FALLS** C-8
Picnicking, Improved Nature Trail to vantage point for view of Falls and Gorge.
- HAPGOOD POND** C-11
Swimming, Camping, Picnicking, Nature Trail.
- GREENDALE** D-11
Picnicking, Camping.
- WHITE ROCKS** C-10
Picnicking, Nature Trail to Lookoff Point. Interesting to Geologist and Botanist.

Information Service

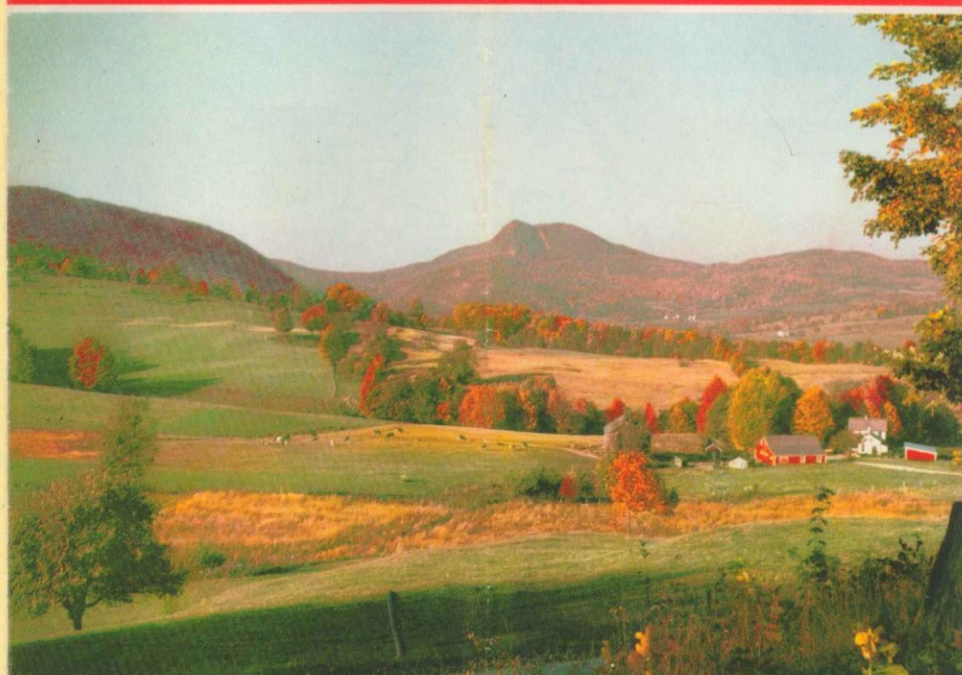
For illustrated folder or further information write Supervisor, Green Mountain National Forest, Rutland, Vermont.

OFFICIAL HIGHWAY MAP

OF
Vermont
The Green Mountain State

OFFICIAL HIGHWAY MAP

OF
Vermont
BEAUTY CORNER OF
NEW ENGLAND



Issued by
VERMONT DEPARTMENT OF HIGHWAYS
and
VERMONT DEVELOPMENT COMMISSION
1954-1955

Issued by
VERMONT DEPARTMENT OF HIGHWAYS
and
VERMONT DEVELOPMENT COMMISSION
1954-1955