

Map of VERMONT *The Green Mountain State*

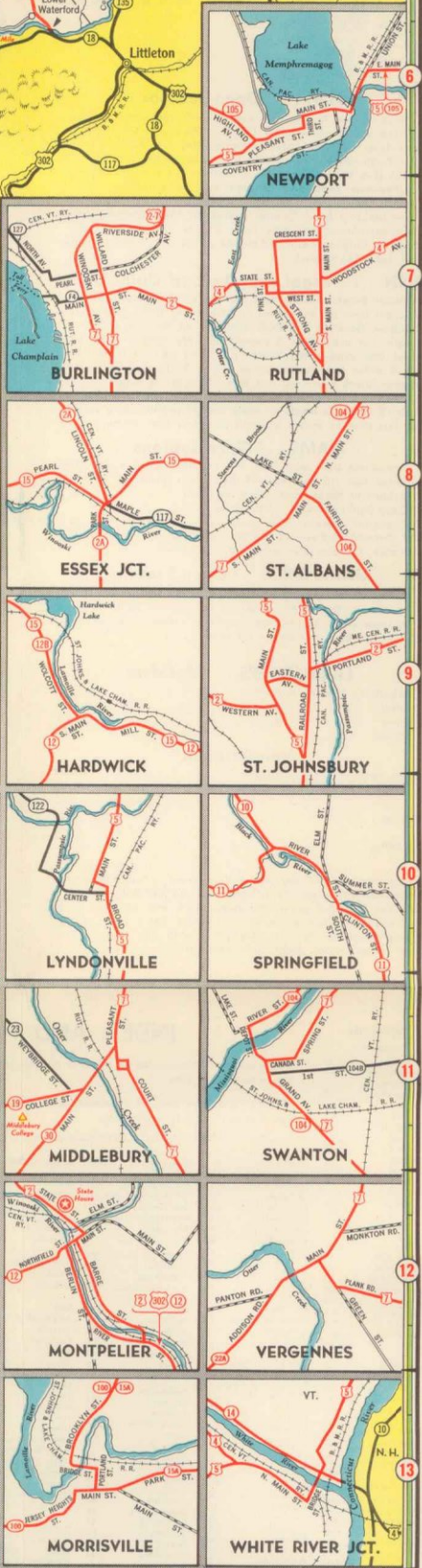
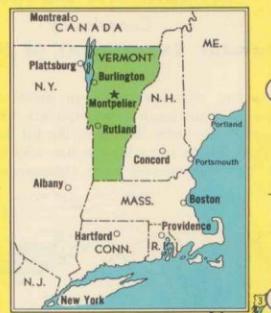
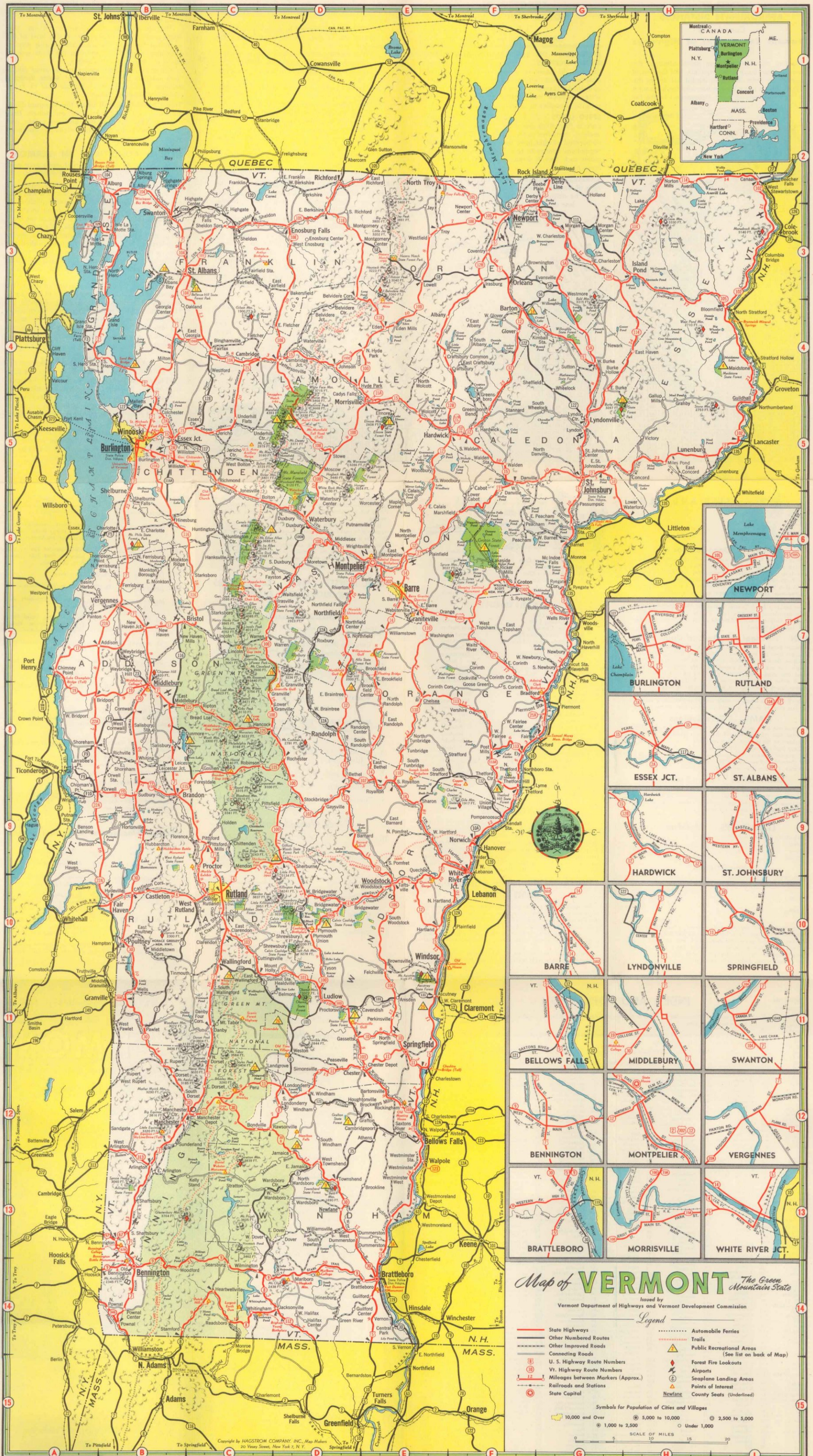
Issued by Vermont Department of Highways and Vermont Development Commission

<p>Legend</p> <ul style="list-style-type: none"> — State Highways — Other Numbered Routes — Other Improved Roads — Connecting Roads 8 U. S. Highway Route Numbers Vt. Highway Route Numbers 12 Mileages between Markers (Approx.) — Railroads and Stations ● State Capital 	<ul style="list-style-type: none"> — Automobile Ferries — Trails ▲ Public Recreational Areas (See list on back of Map) ♦ Forest Fire Lookouts ✈ Airports ⬮ Seaplane Landing Areas ● Points of Interest ▲ Newfane
---	--

Symbols for Population of Cities and Villages

● 10,000 and Over	● 5,000 to 10,000	● 2,500 to 5,000
● 1,000 to 2,500	● Under 1,000	

SCALE OF MILES
0 5 10 15 20



Map of VERMONT *The Green Mountain State*

Issued by Vermont Department of Highways and Vermont Development Commission

<ul style="list-style-type: none"> — State Highways — Other Numbered Routes — Other Improved Roads — Connecting Roads 8 U. S. Highway Route Numbers Vt. Highway Route Numbers 12 Mileages between Markers (Approx.) — Railroads and Stations ● State Capital 	<ul style="list-style-type: none"> — Automobile Ferries — Trails ▲ Public Recreational Areas (See list on back of Map) ♦ Forest Fire Lookouts ✈ Airports ⬮ Seaplane Landing Areas ● Points of Interest ▲ Newfane
--	--

Symbols for Population of Cities and Villages

● 10,000 and Over	● 5,000 to 10,000	● 2,500 to 5,000
● 1,000 to 2,500	● Under 1,000	

SCALE OF MILES
0 5 10 15 20

