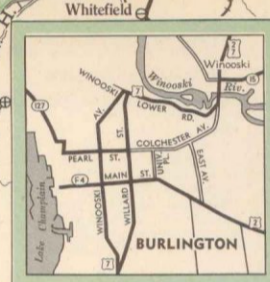
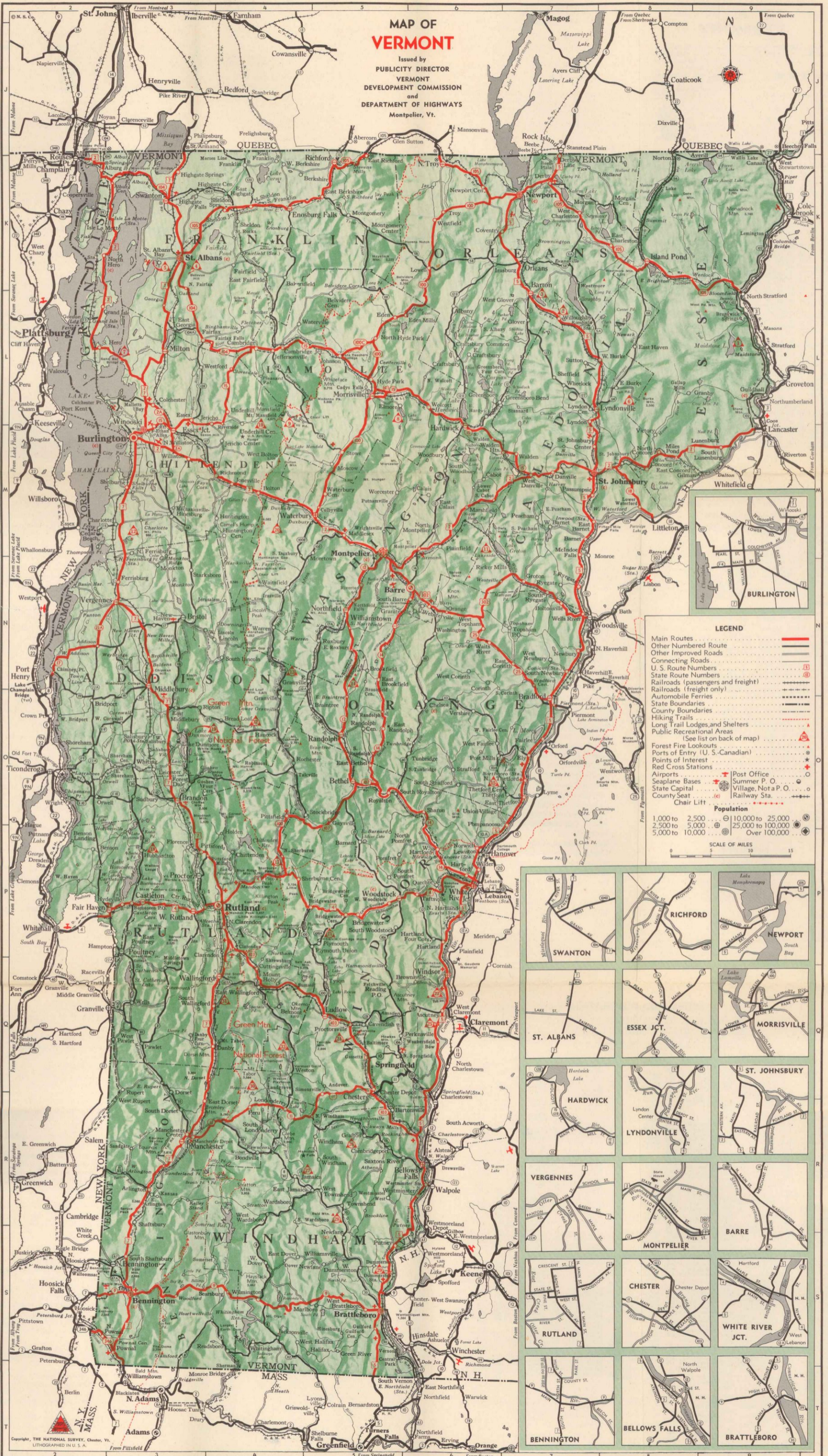


MAP OF VERMONT

Issued by
PUBLICITY DIRECTOR
VERMONT
DEVELOPMENT COMMISSION
and
DEPARTMENT OF HIGHWAYS
Montpelier, Vt.



LEGEND

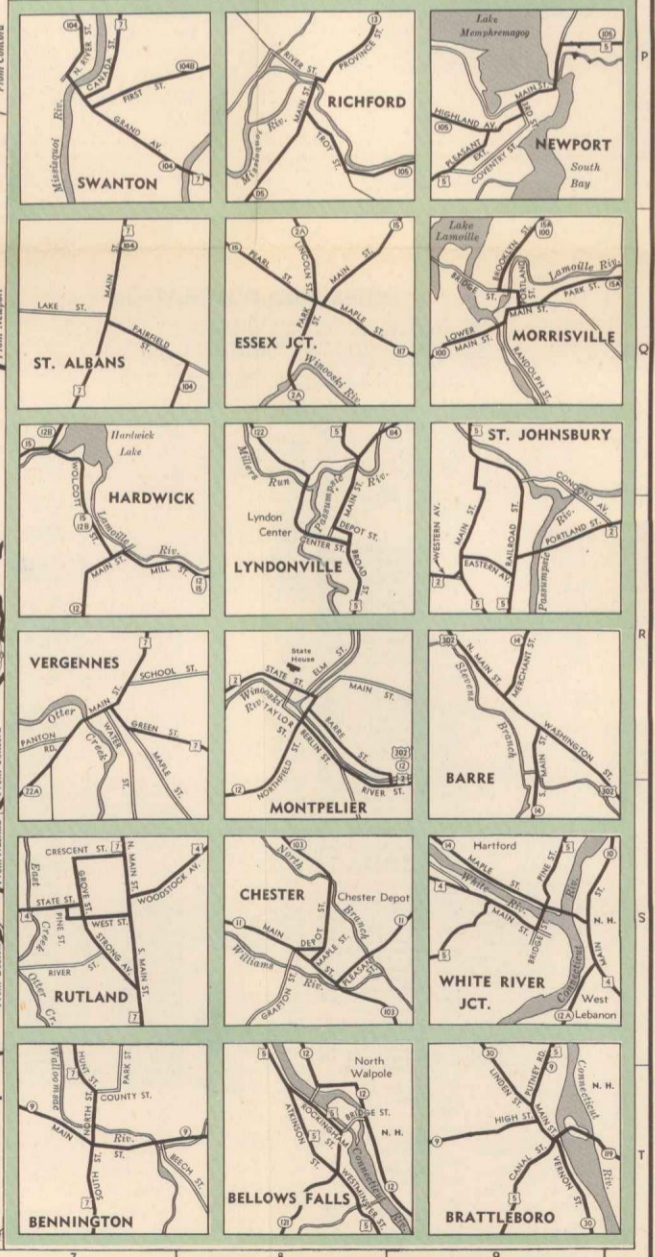
- Main Routes
- Other Numbered Route
- Other Improved Roads
- Connecting Roads
- U. S. Route Numbers
- State Route Numbers
- Railroads (passengers and freight)
- Railroads (freight only)
- Automobile Ferries
- County Boundaries
- State Boundaries
- Hiking Trails
- Long Trail Lodges and Shelters
- Public Recreational Areas
- (See list on back of map)
- Forest Fire Lookouts
- Ports of Entry (U. S.-Canadian)
- Points of Interest
- Red Cross Stations
- Airports
- Seaplane Bases
- State Capital
- County Seat
- Chair Lift

Population

- 1,000 to 2,500
- 2,500 to 5,000
- 5,000 to 10,000
- 10,000 to 25,000
- 25,000 to 100,000
- Over 100,000

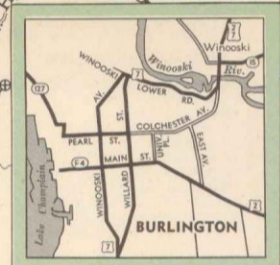
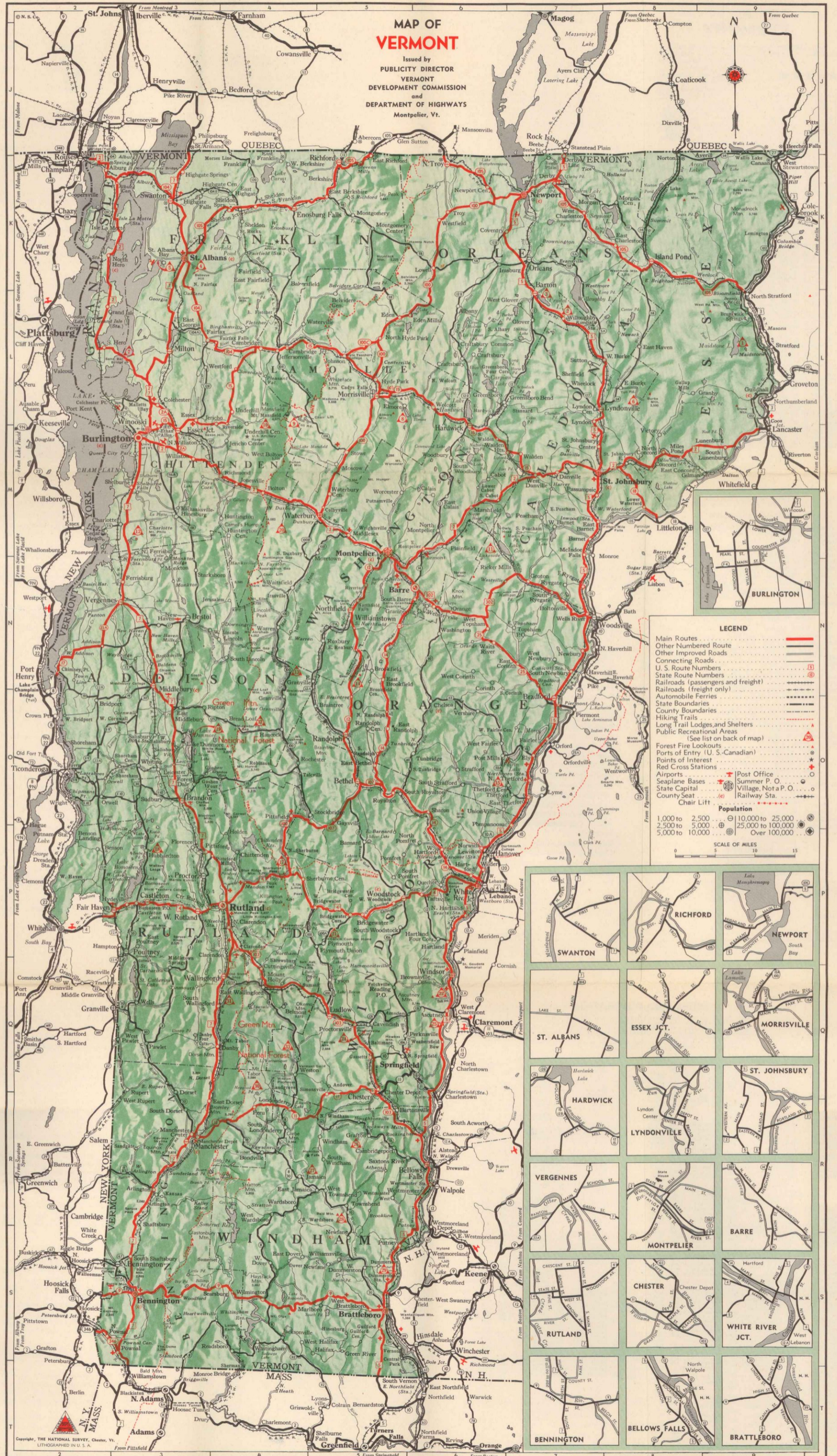
SCALE OF MILES

0 5 10 15



MAP OF VERMONT

Issued by
PUBLICITY DIRECTOR
VERMONT
DEVELOPMENT COMMISSION
and
DEPARTMENT OF HIGHWAYS
Montpelier, Vt.



LEGEND

- Main Routes (thick red line)
- Other Numbered Route (thin red line)
- Other Improved Roads (dashed line)
- Connecting Roads (dotted line)
- U. S. Route Numbers (circle with number)
- State Route Numbers (square with number)
- Railroads (passengers and freight) (line with cross-ticks)
- Railroads (freight only) (line with vertical ticks)
- Automobile Ferries (line with horizontal ticks)
- County Boundaries (dashed line)
- State Boundaries (dotted line)
- Hiking Trails (line with triangles)
- Long Trail Lodges and Shelters (triangle with 'L')
- Public Recreational Areas (triangle with 'P')
- (See list on back of map)
- Forest Fire Lookouts (triangle with 'F')
- Ports of Entry (U. S.-Canadian) (star)
- Points of Interest (star)
- Red Cross Stations (star)
- Airports (circle with 'A')
- Seaplane Bases (circle with 'S')
- State Capital (circle with 'C')
- County Seat (circle with 'CS')
- Chair Lift (circle with 'CL')
- Post Office (circle with 'PO')
- Summer P. O. (circle with 'SP')
- Village, Not a P. O. (circle with 'V')
- Railway Sta. (circle with 'RS')

Population

- 1,000 to 2,500 (circle with '1')
- 2,500 to 5,000 (circle with '2')
- 5,000 to 10,000 (circle with '3')
- 10,000 to 25,000 (circle with '4')
- 25,000 to 100,000 (circle with '5')
- Over 100,000 (circle with '6')

SCALE OF MILES

0 5 10 15

