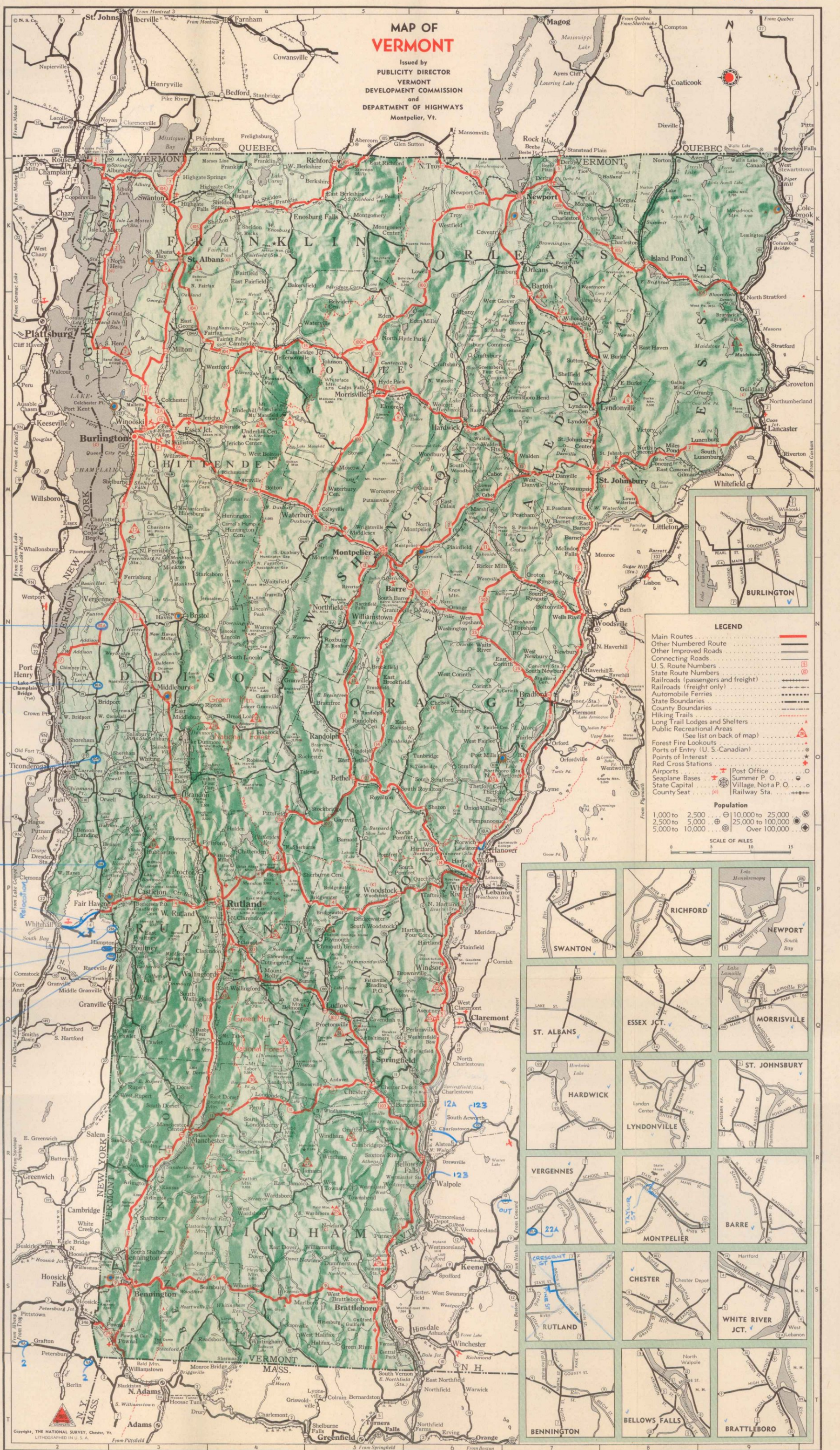


Jan. 1, 1947  
OFFICE

# MAP OF VERMONT

Issued by  
PUBLICITY DIRECTOR  
VERMONT  
DEVELOPMENT COMMISSION  
and  
DEPARTMENT OF HIGHWAYS  
Montpelier, Vt.



**LEGEND**

- Main Routes
- Other Numbered Route
- Other Improved Roads
- Connecting Roads
- U. S. Route Numbers
- State Route Numbers
- Railroads (passengers and freight)
- Railroads (freight only)
- Automobile Ferries
- State Boundaries
- County Boundaries
- Hiking Trails
- Long Trail Lodges and Shelters
- Public Recreational Areas
- (See list on back of map)
- Forest Fire Lookouts
- Ports of Entry (U. S.-Canadian)
- Points of Interest
- Red Cross Stations
- Airports
- Seaplane Bases
- Summer P. O.
- State Capital
- Village, Not a P. O.
- County Seat
- Railway Sta.

**Population**

- 1,000 to 2,500
- 2,500 to 5,000
- 5,000 to 10,000
- 10,000 to 25,000
- 25,000 to 100,000
- Over 100,000

**SCALE OF MILES**

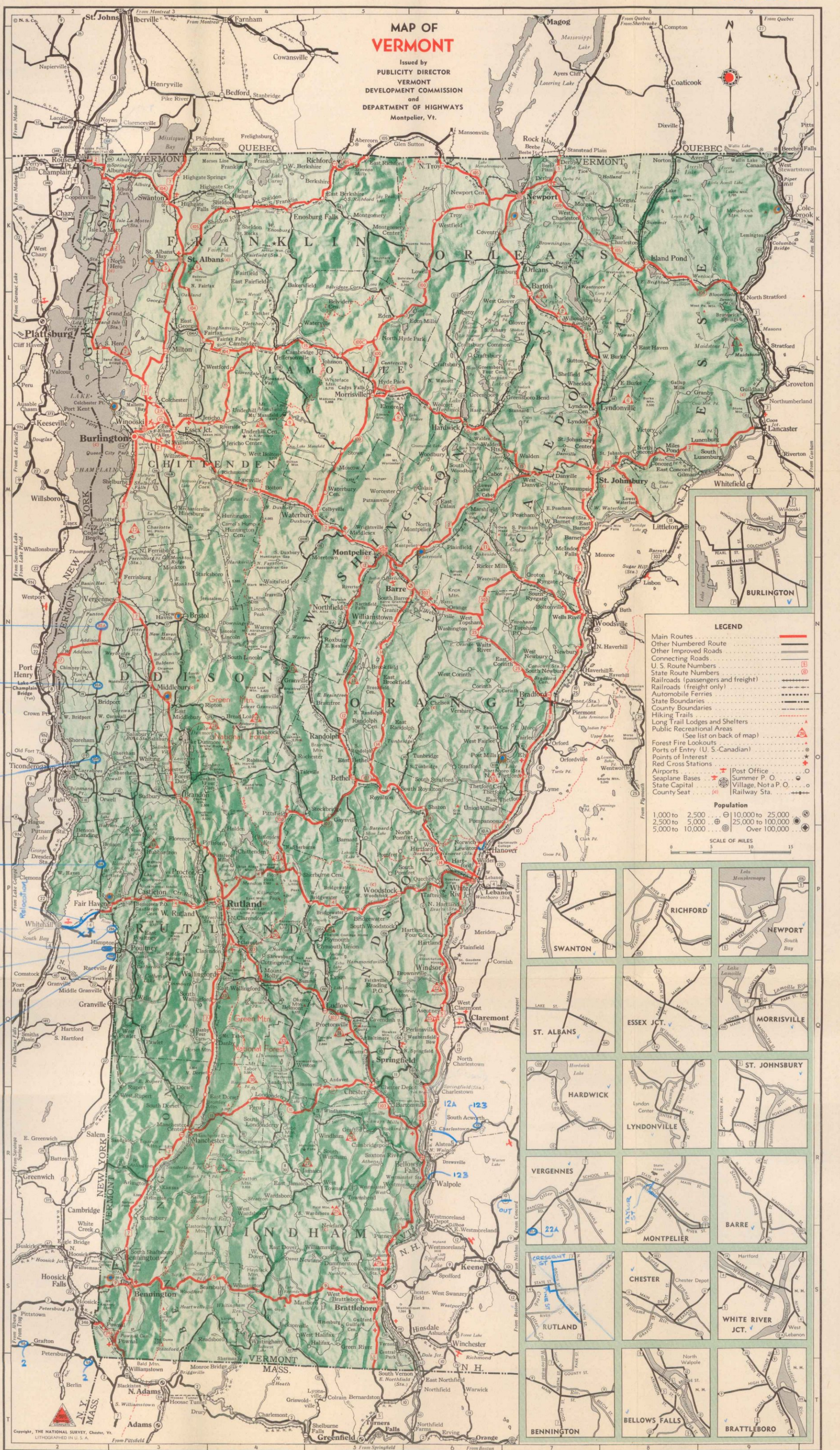
0 5 10 15

**Inset Maps:**

- SWANTON
- RICHFORD
- NEWPORT
- ST. ALBANS
- ESSEX JCT.
- MORRISVILLE
- HARDWICK
- LYNDONVILLE
- ST. JOHNSBURY
- VERGENNES
- MONTPELIER
- BARRE
- RUTLAND
- CHESTER
- WHITE RIVER JCT.
- BENNINGTON
- BELLOWS FALLS
- BATTLEBORO

# MAP OF VERMONT

Issued by  
PUBLICITY DIRECTOR  
VERMONT  
DEVELOPMENT COMMISSION  
and  
DEPARTMENT OF HIGHWAYS  
Montpelier, Vt.



**LEGEND**

- Main Routes (thick red line)
- Other Numbered Route (thin red line)
- Other Improved Roads (dashed line)
- Connecting Roads (dotted line)
- U. S. Route Numbers (circle with number)
- State Route Numbers (square with number)
- Railroads (passengers and freight) (line with cross-ticks)
- Railroads (freight only) (line with vertical ticks)
- Automobile Ferries (line with horizontal ticks)
- State Boundaries (dashed line)
- County Boundaries (dotted line)
- Hiking Trails (line with diagonal ticks)
- Long Trail Lodges and Shelters (triangle with 'L')
- Public Recreational Areas (triangle with 'R')
- Forest Fire Lookouts (triangle with 'F')
- Ports of Entry (U. S.-Canadian) (star)
- Points of Interest (circle with 'I')
- Red Cross Stations (circle with 'R')
- Airports (circle with 'A')
- Seaplane Bases (circle with 'S')
- State Capital (circle with 'C')
- Village, Not a P. O. (circle with 'V')
- County Seat (circle with 'S')
- Post Office (circle with 'P')
- Summer P. O. (circle with 'P')

**Population**

- 1,000 to 2,500 (circle with 1-2)
- 2,500 to 5,000 (circle with 3-4)
- 5,000 to 10,000 (circle with 5-6)
- 10,000 to 25,000 (circle with 7-8)
- 25,000 to 100,000 (circle with 9-10)
- Over 100,000 (circle with 11-12)

SCALE OF MILES  
0 5 10 15

