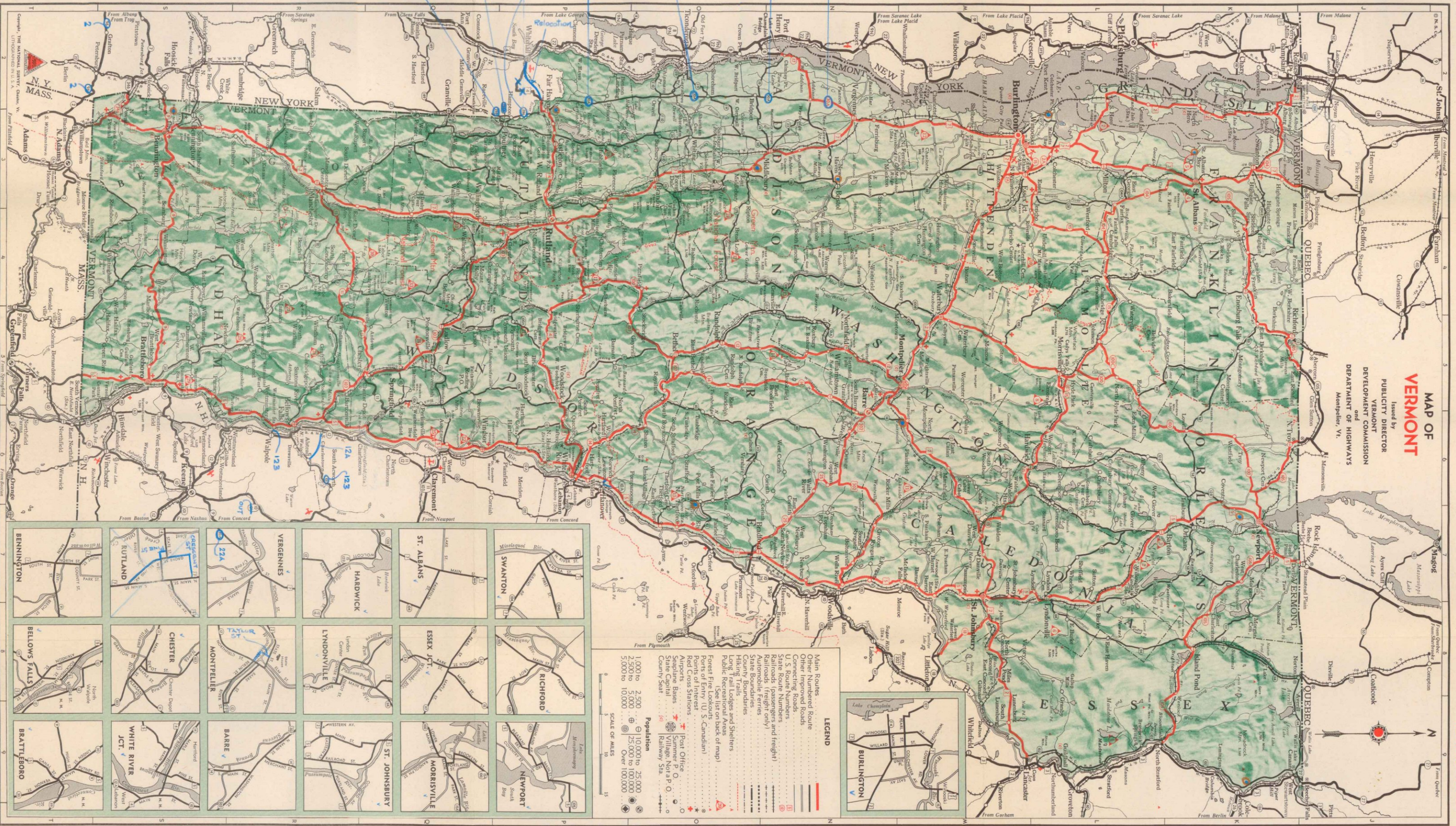


Jan. 1, 1947  
OFFICE

**MAP OF VERMONT**  
Issued by  
**PUBLICITY DIRECTOR**  
**VERMONT**  
DEVELOPMENT COMMISSION  
and  
**DEPARTMENT OF HIGHWAYS**  
Montpelier, Vt.



**LEGEND**

- Main Routes: Solid red line
- Other Numbered Route: Dashed red line
- Connecting Roads: Thin red line
- U.S. Route Numbers: Red circle with number
- State Route Numbers and (freight): Red circle with number and 'F'
- Railroads (freight only): Red line with cross-ticks
- Automobile Ferries: Red line with wavy ticks
- State Boundaries: Dashed black line
- County Boundaries: Dotted black line
- Hiking Trails: Red line with triangles
- Long Trail Lodges and Shelters: Red triangle
- Public Recreational Areas: Red circle with 'R'
- Forest Fire Lookouts: Red circle with 'L'
- Points of Interest (U.S. Canadian): Red star
- Red Cross Stations: Red cross
- Airports: Red circle with 'A'
- Seaplane Bases: Red circle with 'S'
- State Office: Red circle with 'O'
- Summer Not a P. O.: Red circle with 'N'
- State Capital: Red circle with 'C'
- County Seat: Red circle with 'S'
- Railway Sta.: Red circle with 'R'

**Population**

- 1,000 to 2,500: Small circle
- 2,500 to 5,000: Medium circle
- 5,000 to 10,000: Large circle
- Over 100,000: Large circle with center dot

**SCALE OF MILES**

0 5 10 15
