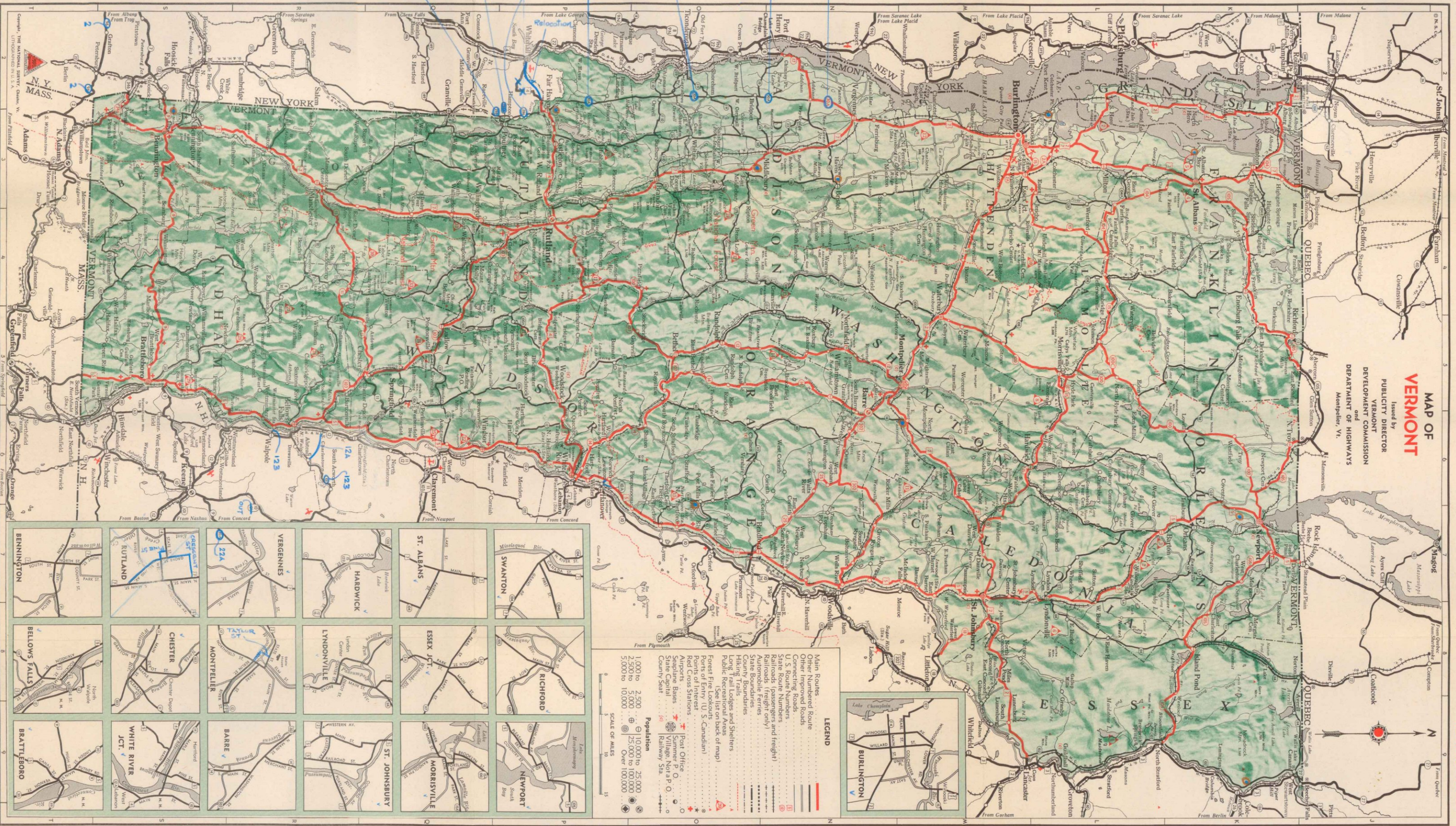


Jan. 1, 1947
OFFICE

MAP OF VERMONT
Issued by
PUBLICITY DIRECTOR
VERMONT
DEVELOPMENT COMMISSION
and
DEPARTMENT OF HIGHWAYS
Montpelier, Vt.



LEGEND

- Main Routes: (thick red line)
- Other Numbered Route: (thin red line)
- Connecting Roads: (dashed red line)
- U.S. Route Numbers: (red line with number)
- State Route Numbers and (freight): (red line with number and 'F')
- Railroads (freight only): (black line with cross-ticks)
- Automobile Ferries: (dotted line)
- State Boundaries: (dashed black line)
- County Boundaries: (dotted black line)
- Hiking Trails: (dashed black line with triangle)
- Long Trail Lodges and Shelters: (triangle)
- Public Recreational Areas: (circle with 'R')
- Forest Fire Lookouts: (circle with 'L')
- Points of Interest: (circle with 'I')
- Red Cross Stations: (circle with 'R')
- Airports: (circle with 'A')
- Seaplane Bases: (circle with 'S')
- State Capital: (circle with 'C')
- County Seat: (circle with 'S')
- Post Office: (circle with 'P')
- Summer Not a P. O.: (circle with 'N')
- Railway Station: (circle with 'R')

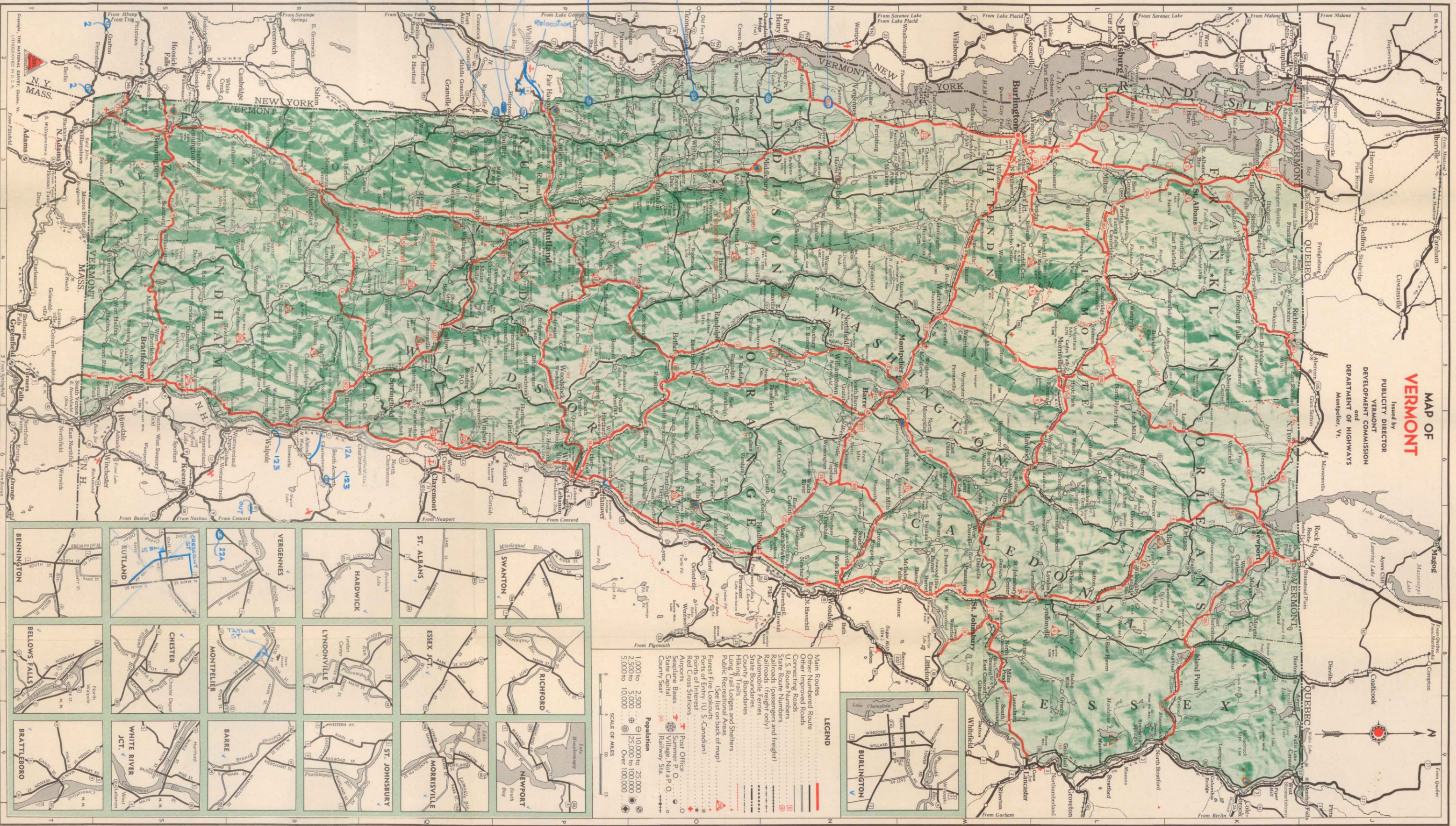
Population

- 1,000 to 2,500: (small circle)
- 2,500 to 5,000: (medium circle)
- 5,000 to 10,000: (large circle)
- Over 100,000: (large circle with center dot)

SCALE OF MILES
0 5 10 15

Jan. 1, 1947
OFFICE

MAP OF VERMONT
Issued by
VERMONT
PUBLICITY DIRECTOR
VERMONT
DEVELOPMENT COMMISSION
and
DEPARTMENT OF HIGHWAYS
Montpelier, Vt.



LEGEND

- Main Routes: (thick red line)
- Other Numbered Route: (thin red line)
- Connecting Roads: (dashed red line)
- U.S. Route Numbers: (red circle with number)
- State Route Numbers and (freight): (red circle with number and 'F')
- Railroads (freight only): (black line with cross-ticks)
- Automobile Ferries: (dashed black line)
- State Boundaries: (dotted black line)
- County Boundaries: (dotted black line)
- Hiking Trails: (dashed black line)
- Long Trail Lodges and Shelters: (black triangle)
- Public Recreational Areas: (black triangle with 'R')
- Forest Fire Lookouts: (black triangle with 'L')
- Points of Interest: (black triangle with 'I')
- Red Cross Stations: (black triangle with 'R')
- Airports: (black triangle with 'A')
- Seaside Bases: (black triangle with 'S')
- State Capital: (black circle with 'C')
- County Seat: (black circle with 'S')
- Post Office: (black circle with 'P')
- Summer Not a P. O.: (black circle with 'N')
- Railway Station: (black circle with 'R')

Population

- 1,000 to 2,500: (small black circle)
- 2,500 to 5,000: (medium black circle)
- 5,000 to 10,000: (large black circle)
- Over 100,000: (large black circle with center dot)

SCALE OF MILES
0 5 10 15

