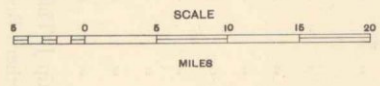
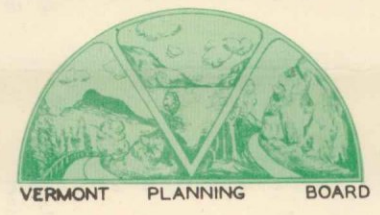
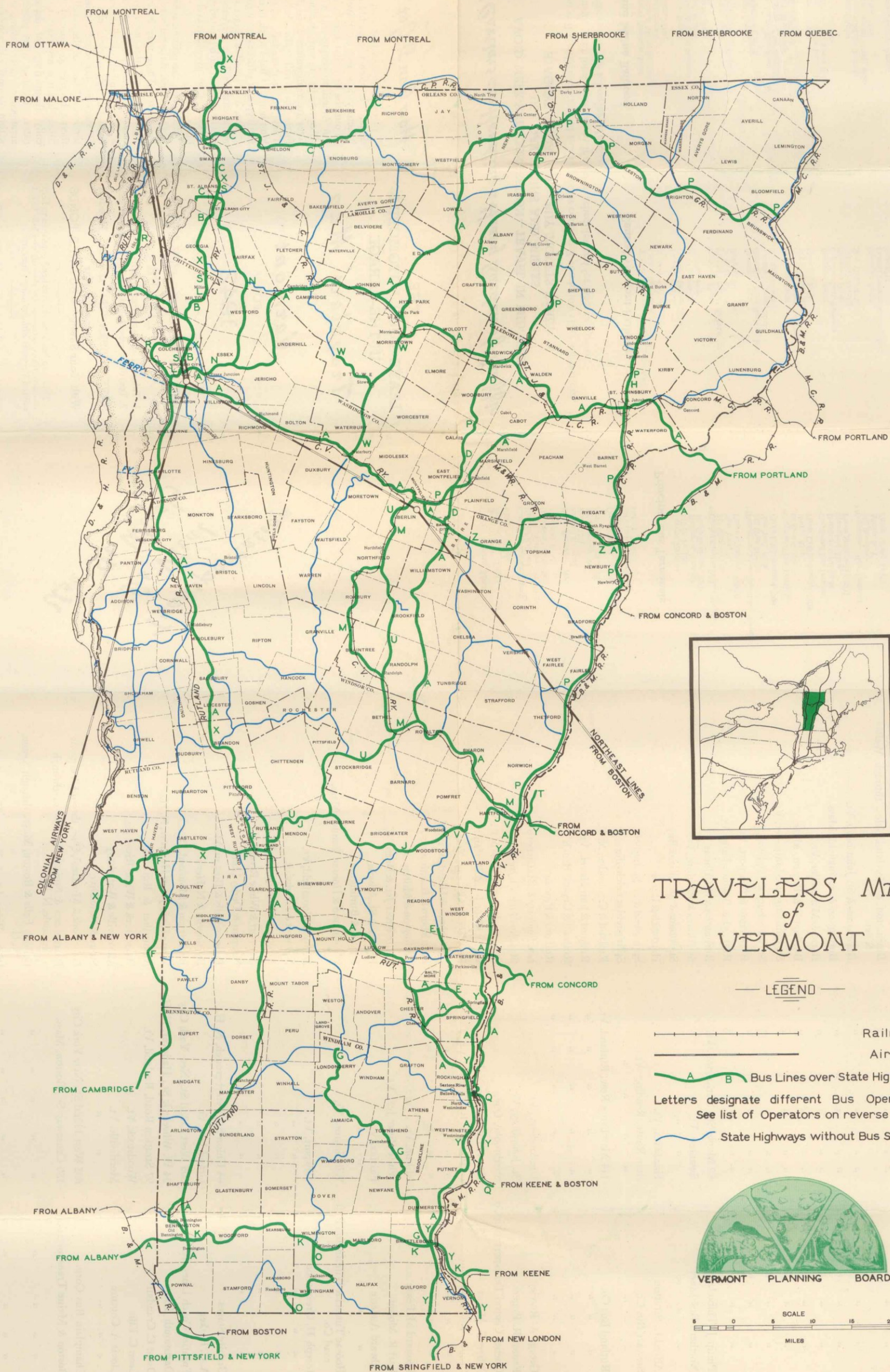


TRAVELERS MAP of VERMONT

— LEGEND —

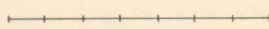
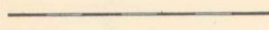

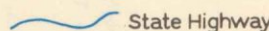
- Railroads
- Airways
- A B Bus Lines over State Highways
- Letters designate different Bus Operators
See list of Operators on reverse
- State Highways without Bus Service

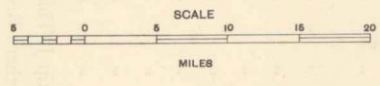
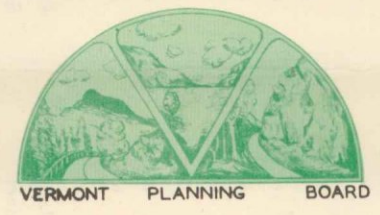




TRAVELERS MAP of VERMONT

LEGEND

-  Railroads
-  Airways
-  Bus Lines over State Highways
- Letters designate different Bus Operators
See list of Operators on reverse
-  State Highways without Bus Service



Bus Operators Serving Vermont

Letter	Name of Operator	Address	Scheduled Trips Between
A	Vermont Transit Co.	343 N. Winooski Ave., Burlington, Vt.	Burlington & Pittsfield, Mass.—New York, N. Y.
"	"	"	Burlington & Albany, N. Y.
"	"	"	Burlington & Portland, Me., through Wells River
"	"	"	Burlington & St. Johnsbury, Vt.
"	"	"	Burlington & Springfield, Mass.
"	"	"	Barre & Montpelier, Vt.
"	"	"	Burlington & Boston, Mass.
"	"	"	St. Johnsbury & Montpelier, Vt.
"	"	"	St. Johnsbury & Littleton, N. H.
"	"	"	Burlington & Newport, Vt.
"	"	"	Rutland & Bellows Falls, Vt.
B	Philip J. Thibodeau	89 Maple St., Burlington, Vt.	Burlington & St. Albans
C	Northern Bus Lines	Swanton, Vt.	St. Albans & Richford, Vt.
"	"	"	St. Albans & St. Albans Bay
D	Alfred E. Stratton	Hardwick, Vt.	Hardwick & Barre
E	Stewart Bus Co.	Star Route, Reading, Vt.	Springfield & N. Springfield
"	"	"	Springfield & Felchville
F	Rutland Bus Co.	114 Merchants Row, Rutland, Vt.	Rutland & Cambridge, N. Y.
"	"	"	Rutland & Fair Haven, Vt.
"	"	"	Rutland & Crystal Beach
"	"	"	Rutland & Proctor
G	George A. Rowley	Londonderry, Vt.	Londonderry & Brattleboro
H	Ernest R. Rogers	St. Johnsbury, Vt.	St. Johnsbury & Lyndonville
I	Quebec Central Transportation Co.	Sherbrooke, Que.	Stanstead, Que. & Newport, Vt.
J	Albert S. Abbott	Box 721, Hanover, N. H.	White River Jct. & Rutland
K	Peoples Bus Lines, Inc.	66 Pine St., Brattleboro, Vt.	Brattleboro & Keene, N. H.
"	"	"	Brattleboro & Hinsdale, N. H.
"	"	"	Brattleboro & Bennington
L	Leonard M. Pease	Milton, Vt.	Burlington & Milton
M	Earl R. Mower	White River Jct., Vt.	White River Jct. & Barre
N	Edward Audette	Fairfax, Vt.	Fairfax & St. Albans
"	"	"	Fairfax & Burlington
O	Hoosac Tunnel & Wilmington Railroad Co.	Wilmington, Vt.	Wilmington & Hoosac Tunnel, Mass.
P	Joseph H. Greenwood	Newport, Vt.	Derby & Bloomfield, Vt.
"	"	"	Newport & Hardwick
"	"	"	Newport & Montpelier, Vt.
"	"	"	Newport & White River Jct.
"	"	"	Newport & Derby Line
Q	Granite Stages	64 Union St., Peterborough, N. H.	Bellows Falls & Boston, Mass.
R	A. C. Parker	Grand Isle, Vt.	Burlington & N. Hero
S	Frontier Coach Lines, Inc.	605 West 132nd St., New York City	Burlington & Montreal, Que.
T	Dartmouth Tours	34 W. Wheelock St., Hanover, N. H.	White River Jct. & Hanover, N. H.
U	Oscar C. Crandall	97 Stratton Road, Rutland, Vt.	Montpelier & Rutland
V	Leon C. Ellis	Woodstock, Vt.	Woodstock & White River Jct.
W	Clovis A. Couture	Morrisville, Vt.	Morrisville & Waterbury
"	"	"	Stowe & Nose Dive
X	Champlain Bus Corp.	605 West 132nd St., New York City	New York & Montreal, Que., through Vermont
Y	Boston & Maine Transportation	150 Causeway St., Boston, Mass.	Brattleboro & Springfield, Mass., through Hinsdale, N. H.
"	"	"	Bellows Falls & Boston, Mass., through Keene, N. H.
"	"	"	White River Jct. & Boston, Mass., through Concord
Z	Gerald H. Beckley	South Ryegate, Vt.	Barre & Woodsville, N. H.

The above list includes only the Bus Operators as found in the files of the Vt. Public Service Commission. In addition many communities are served by means of stages, small buses, or Star Route carriers, etc. Information as to these is not contained in printed schedules and in most cases can be secured only at their various stops.

Principal Bus Terminals

*Central Terminal
137 St. Paul St.
Burlington, Vermont
Phone Burlington 3610

*Capital Greyhound Bus Terminal
245 West 50th St.
New York, N. Y.

*Pennsylvania Greyhound Bus Terminal
242 West 34th St.
New York, N. Y.
Phone Lackawanna 4-5700

*Greyhound Bus Terminal
60 Park Square
Boston, Mass.

*Greyhound Bus Terminal
384 St. James Street
Montreal, P. Q.

Passenger Agent
1155 Terminal Tower Bldg.
Cleveland, Ohio

Canadian Natl. Railways
673 Fifth Avenue
New York, N. Y.

Passenger Agent
5-216 General Motors Bldg.
Detroit, Mich.

General Eastern Agent
Rooms 1565 & 1566
Boston & Maine Railroad
230 Park Avenue
New York City, N. Y.

General Agent
Boston & Maine Railroad
Broad Street Station Bldg.
Philadelphia, Penna.

General Agent
Boston & Maine Railroad
101 Koppers Bldg.
Pittsburgh, Pa.

New England Railroad
150 Causeway St.
Boston, Mass.

*Served by Vermont Transit Lines
*Served by Champlain Bus Corporation

Central Vermont Railway

T. E. P. Pringle, General Passenger Agent
St. Albans, Vermont

Passenger Agent
186 Terminal St.
North Station
Boston, Mass.

Travel Bureau
Boston & Maine Railroad
North Station
Boston, Mass.

General Western Agent
916 Utilities Bldg.
Chicago, Illinois

General Western Agent
4 South Michigan Blvd.
Chicago, Illinois

Passenger Dept.
Buffalo, New York

Lehigh Valley Passenger Terminal
Room 301
Buffalo, New York

General Western Agent
22 N. Division St.
Central Vermont Railway, Inc.
Buffalo, New York

Passenger Dept.
196 Terminal St.
North Station
Boston, Mass.

Passenger Agent
186 Terminal St.
North Station
Boston, Mass.

Central Vermont Railway
St. Albans, Vermont

Rutland Railroad

R. W. Carrall, General Passenger Agent
Room 983
Broad Street Station Bldg.
Philadelphia, Penna.

General Agent
Boston & Maine Railroad
Broad Street Station Bldg.
Philadelphia, Penna.

General Agent
Boston & Maine Railroad
1155 Terminal Tower Bldg.
Cleveland, Ohio

Passenger Agent
Canadian Natl. Railways
673 Fifth Avenue
New York, N. Y.

Passenger Agent
5-216 General Motors Bldg.
Detroit, Mich.

General Eastern Agent
Rooms 1565 & 1566
Boston & Maine Railroad
230 Park Avenue
New York City, N. Y.

General Agent
Boston & Maine Railroad
Broad Street Station Bldg.
Philadelphia, Penna.

General Agent
Boston & Maine Railroad
101 Koppers Bldg.
Pittsburgh, Pa.

All Carriers are Handling a Heavy Burden of Traffic

AVOID WEEK-END CONGESTION—TRAVEL IN MID-WEEK
USE DAY TRAINS AND BUSES
STAGGER VACATIONS—BUY TICKETS EARLY

You will see the country and ride in greater comfort if you follow these suggestions. Consult your local ticket agent for latest schedules and for reservations or, Write one of the following addresses:

THE
LEAVE-YOUR-AUTOMOBILE-
IN-THE-GARAGE
Travelers' Map
OF
Vermont
FOR
1942

WHEN YOU *Must* TRAVEL---
EITHER

1. Take other travelers in your car—or
2. Travel by scheduled passenger carriers and

SAVE RUBBER - GAS and OIL Needed
for the War
With Your Savings -- BUY WAR BONDS

This map has been prepared and published to help you save transportation—by showing you how to get around Vermont without using your car.

Since all schedules of Passenger Carrying Trips made by the Transportation Companies are subject to change because of the war—be sure to get the latest timetables when planning your trip.

Published by the
* Vermont Publicity Service *
Department of Conservation and Development

How Can I Get There?

In these days of fast changing conditions, it is often impossible to give satisfactory answers to travel inquiries. About the best that can be said is that our American people will willingly sacrifice to win the war and in their daily lives are as ingenious as in their war efforts—they will gain their objective. They will get needed relaxation from long hours of hard work in order to put forth greater effort as time goes on.

Yes, it is possible to get around, but not as easily as in yesteryears. Vermont can be reached with limited gasoline and rubber but many will travel by rail and bus.

There are the printed schedules, subject to change, of the railroads and larger bus lines. These may be consulted in connection with this map. Some smaller bus services are not on the schedules but a large number of the towns remote from through services can be reached by stage or star route carriers and taxi services. Many of the small carriers fit their schedules to those of the through routes but it is necessary to inquire locally about times of departures and rates. In most cases proprietors have arranged to meet guests at terminals within reasonable driving distance.

It seems that in addition to the advantages of scenery, outdoor sport and healthful living, there may be an element of travel adventure in business or vacation travel for the rest of the "duration." Country life will be more leisurely; there will be less rushing around and, as long as wheels turn, the way back home is open.

*Transportation
is Vital
Use It Wisely*