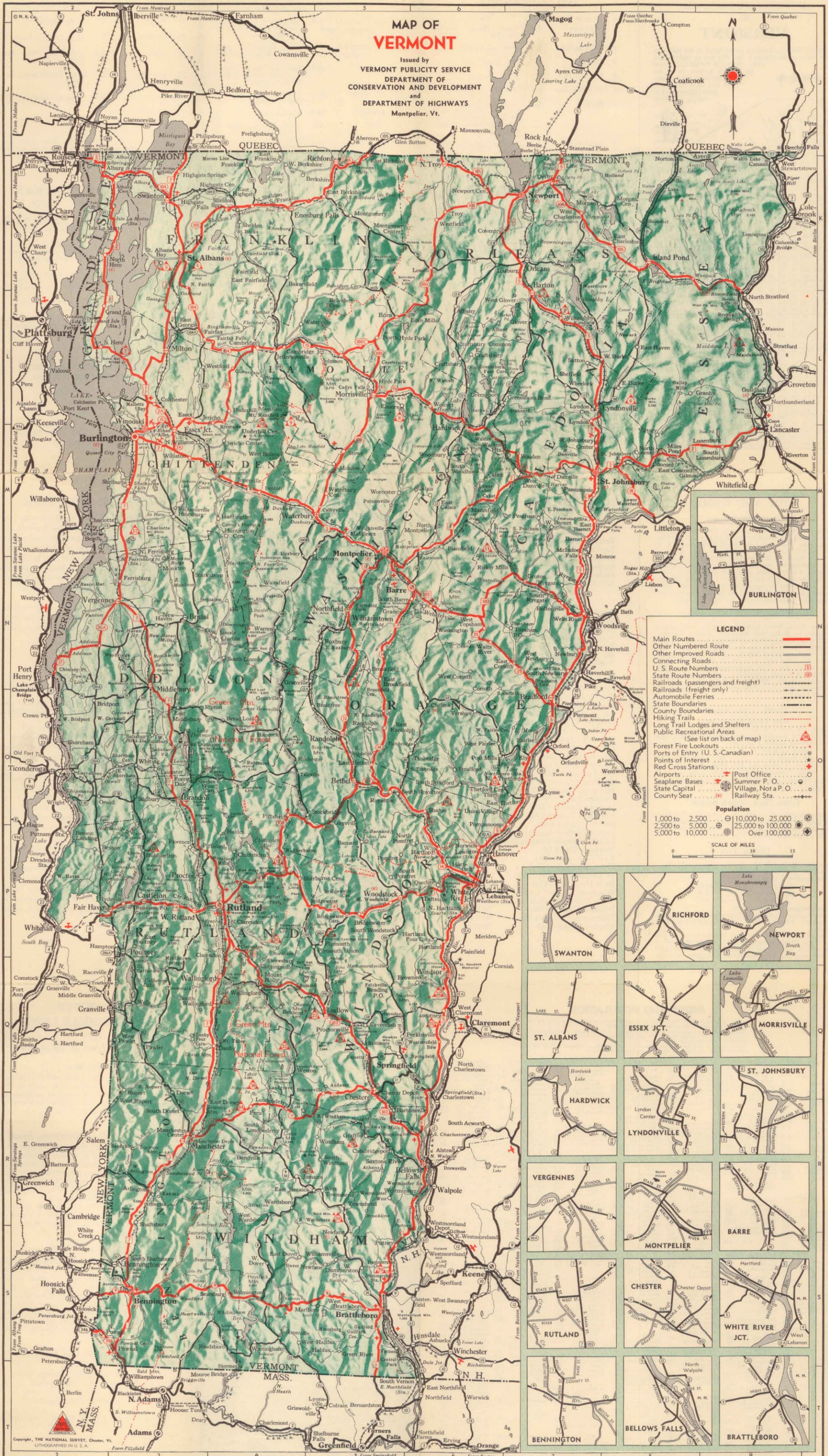


MAP OF VERMONT

Issued by
VERMONT PUBLICITY SERVICE
DEPARTMENT OF CONSERVATION AND DEVELOPMENT
and
DEPARTMENT OF HIGHWAYS
Montpelier, Vt.



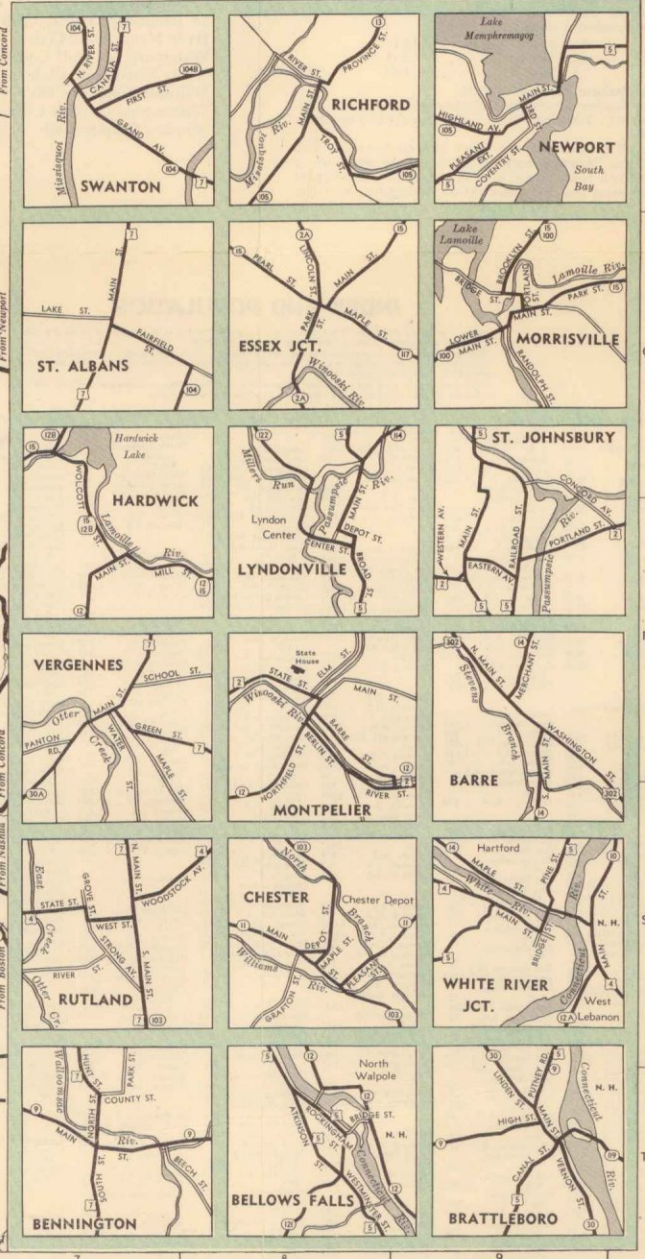
LEGEND

- Main Routes (Red line)
- Other Numbered Route (Black line)
- Connecting Roads (Dotted line)
- U. S. Route Numbers (Red circle with number)
- State Route Numbers (Black circle with number)
- Railroads (passengers and freight) (Black line with cross-ticks)
- Railroads (freight only) (Black line with cross-ticks)
- Automobile Ferries (Dashed line)
- State Boundaries (Dashed line)
- County Boundaries (Dotted line)
- Hiking Trails (Red dashed line)
- Long Trail Lodges and Shelters (Red triangle)
- Public Recreational Areas (Red triangle)
- Forest Fire Lookouts (Red triangle)
- Points of Entry (U. S.-Canadian) (Red star)
- State Capital (Red star)
- Red Cross Stations (Red star)
- Airports (Red star)
- Seaplane Bases (Red star)
- Village, Not a P. O. (Red star)
- County Seat (Red star)
- Post Office (Red star)
- Summer P. O. (Red star)
- Railway Sta. (Red star)

Population

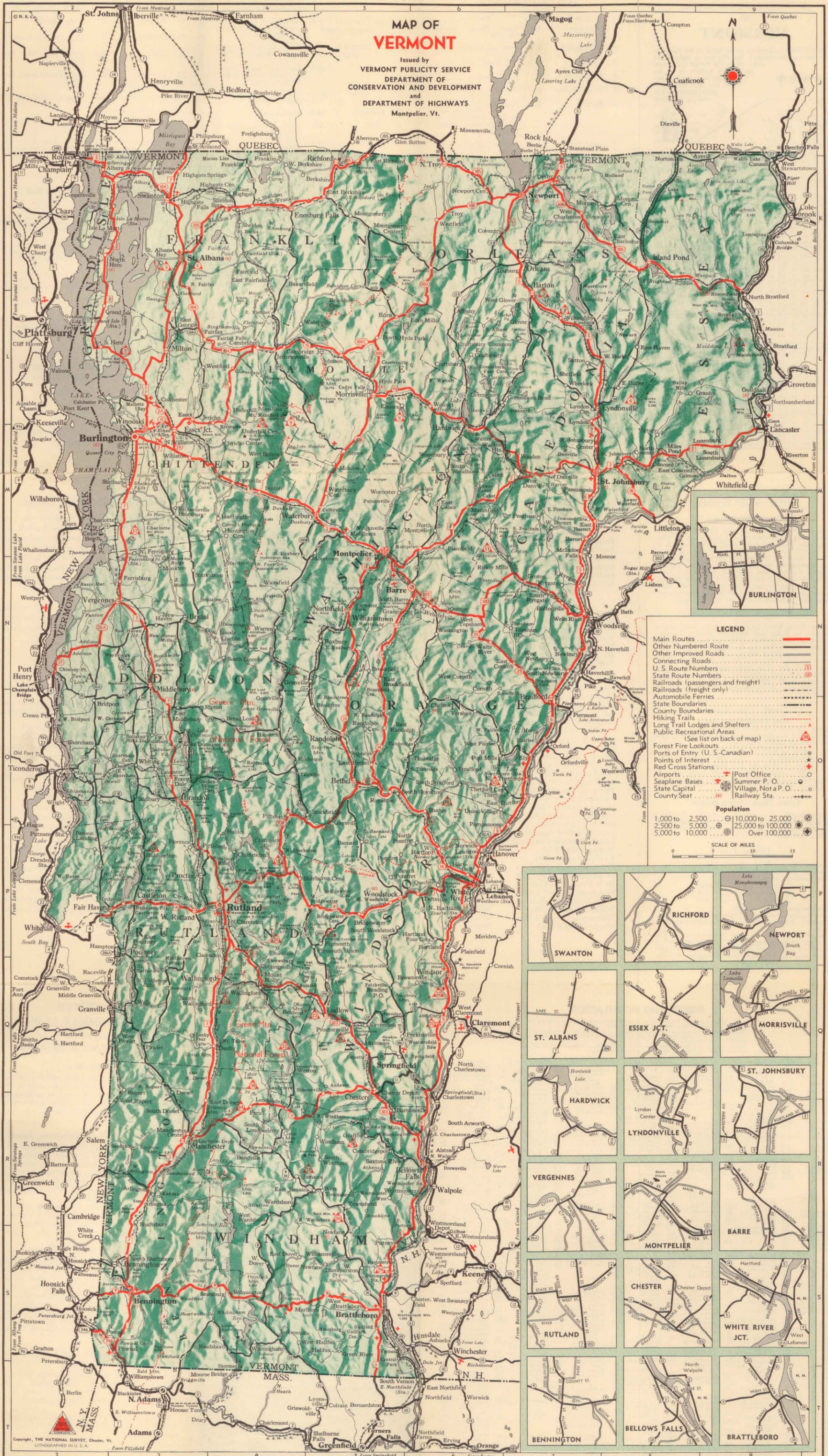
- 1,000 to 2,500 (Small circle)
- 2,500 to 5,000 (Medium circle)
- 5,000 to 10,000 (Large circle)
- 10,000 to 25,000 (Large circle with dot)
- 25,000 to 100,000 (Large circle with dot)
- Over 100,000 (Large circle with dot)

SCALE OF MILES
0 5 10 15



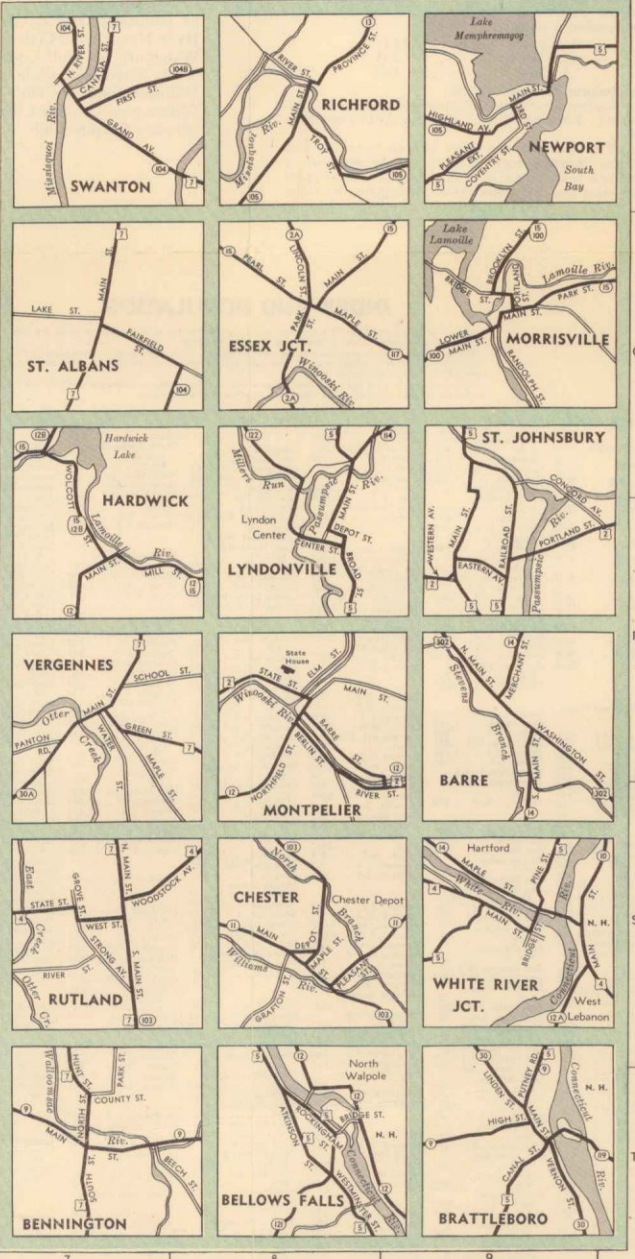
MAP OF VERMONT

Issued by
VERMONT PUBLICITY SERVICE
DEPARTMENT OF CONSERVATION AND DEVELOPMENT
and
DEPARTMENT OF HIGHWAYS
Montpelier, Vt.



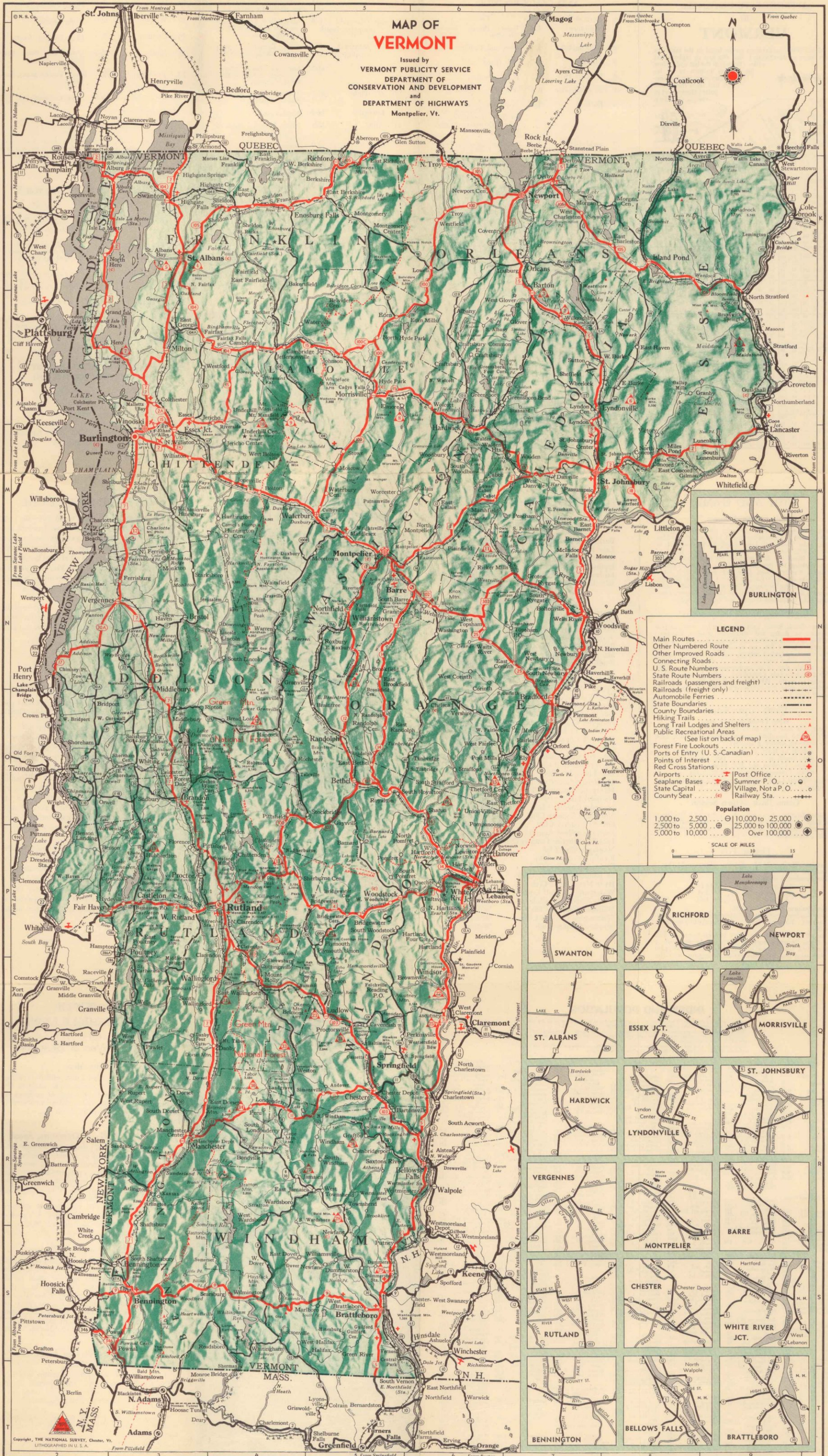
LEGEND

- Main Routes (thick red line)
 - Other Numbered Route (thin red line)
 - Other Improved Roads (dashed line)
 - Connecting Roads (dotted line)
 - U. S. Route Numbers (numbered red line)
 - State Route Numbers (numbered blue line)
 - Railroads (passengers and freight) (black line with cross-ticks)
 - Railroads (freight only) (black line with cross-ticks)
 - Automobile Ferries (dashed line with cross-ticks)
 - State Boundaries (dashed line)
 - County Boundaries (dotted line)
 - Hiking Trails (dotted line with cross-ticks)
 - Long Trail Lodges and Shelters (triangle with 'A')
 - Public Recreational Areas (triangle with 'R')
 - Forest Fire Lookouts (triangle with 'F')
 - Points of Entry (U. S.-Canadian) (star)
 - State Capital (star with 'S')
 - Red Cross Stations (star with 'R')
 - Airports (square with 'A')
 - Seaplane Bases (square with 'S')
 - Village, Not a P. O. (circle with 'V')
 - County Seat (circle with 'C')
 - Post Office (circle with 'P')
 - Summer P. O. (circle with 'S')
 - Railway Sta. (circle with 'R')
- Population**
- 1,000 to 2,500 (circle with '1')
 - 2,500 to 5,000 (circle with '2')
 - 5,000 to 10,000 (circle with '3')
 - 10,000 to 25,000 (circle with '4')
 - 25,000 to 100,000 (circle with '5')
 - Over 100,000 (circle with '6')
- SCALE OF MILES
0 5 10 15



MAP OF VERMONT

Issued by
VERMONT PUBLICITY SERVICE
DEPARTMENT OF CONSERVATION AND DEVELOPMENT
and
DEPARTMENT OF HIGHWAYS
Montpelier, Vt.



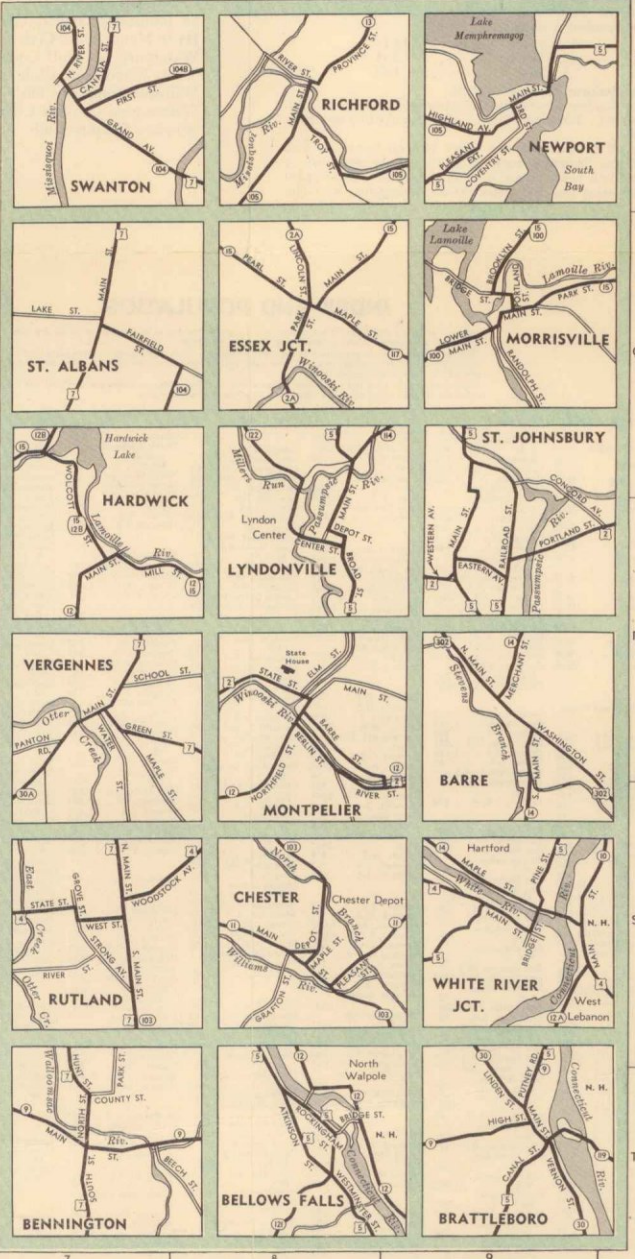
LEGEND

- Main Routes (Red line)
- Other Numbered Route (Black line with number)
- Connecting Roads (Dotted line)
- U. S. Route Numbers (Red line with number)
- State Route Numbers (Black line with number)
- Railroads (passengers and freight) (Dashed line with cross-ticks)
- Railroads (freight only) (Dashed line with cross-ticks)
- Automobile Ferries (Dashed line with cross-ticks)
- State Boundaries (Thick black line)
- County Boundaries (Thin black line)
- Hiking Trails (Dotted line)
- Long Trail Lodges and Shelters (Red triangle)
- Public Recreational Areas (Red triangle)
- Forest Fire Lookouts (Red triangle)
- Points of Entry (U. S.-Canadian) (Red triangle)
- State Capital (Red star)
- Red Cross Stations (Red cross)
- Airports (Red airplane)
- Seaplane Bases (Red airplane)
- Village, Not a P. O. (Red circle)
- County Seat (Red circle)
- Post Office (Red circle)
- Summer P. O. (Red circle)
- Railway Sta. (Red circle)

Population

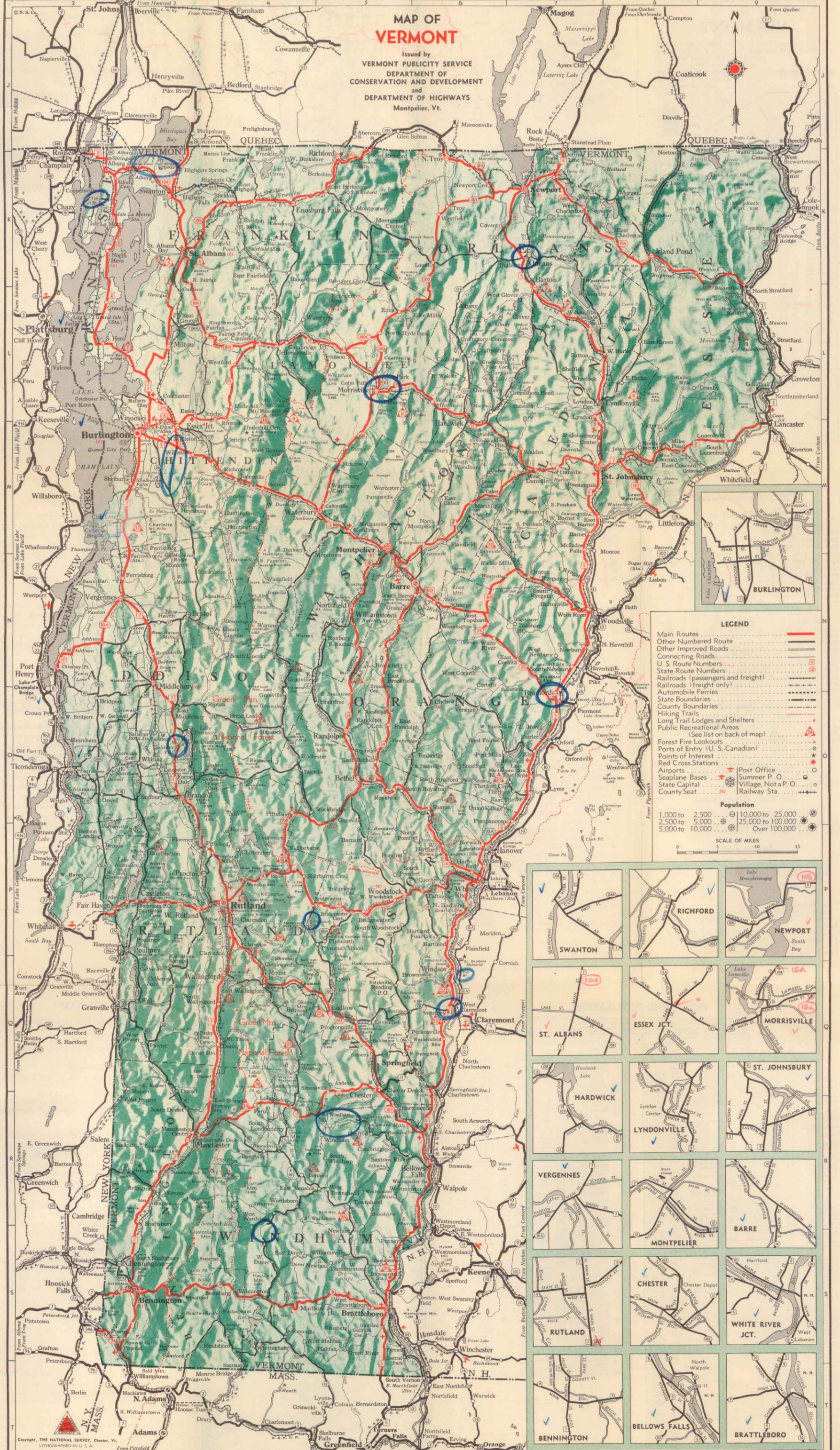
- 1,000 to 2,500 (Small circle)
- 2,500 to 5,000 (Medium circle)
- 5,000 to 10,000 (Large circle)
- 10,000 to 25,000 (Large circle with dot)
- 25,000 to 100,000 (Large circle with dot)
- Over 100,000 (Large circle with dot)

SCALE OF MILES
0 5 10 15



MAP OF VERMONT

Issued by
VERMONT PUBLICITY SERVICE
DEPARTMENT OF CONSERVATION AND DEVELOPMENT
and
DEPARTMENT OF HIGHWAYS
Montpelier, Vt.



LEGEND

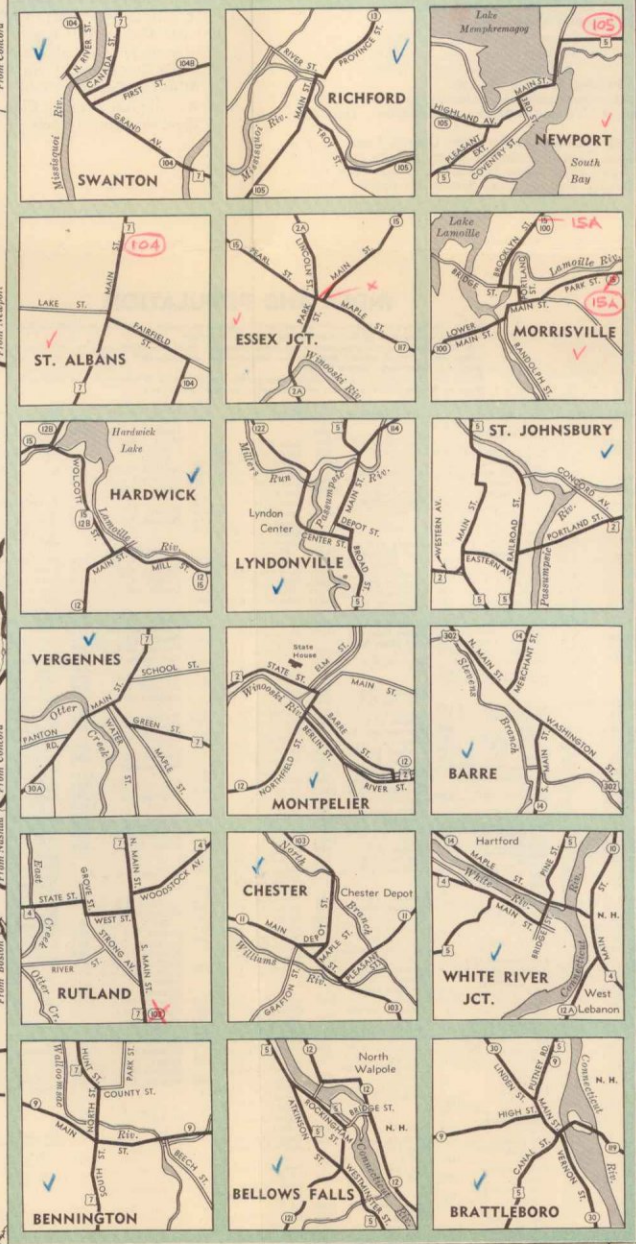
- Main Routes (thick red line)
- Other Numbered Route (thin red line)
- Other Improved Roads (dashed line)
- Connecting Roads (dotted line)
- U. S. Route Numbers (numbered red line)
- State Route Numbers (numbered blue line)
- Railroads (passengers and freight) (black line with cross-ticks)
- Railroads (freight only) (black line with cross-ticks)
- Automobile Ferries (dashed line with cross-ticks)
- State Boundaries (dashed line)
- County Boundaries (dotted line)
- Hiking Trails (dotted line with cross-ticks)
- Long Trail Lodges and Shelters (triangle with cross-ticks)
- Public Recreational Areas (triangle with cross-ticks)
- Forest Fire Lookouts (triangle with cross-ticks)
- Points of Entry (U. S.-Canadian) (dotted line with cross-ticks)
- Points of Interest (dotted line with cross-ticks)
- Red Cross Stations (square with cross-ticks)
- Airports (square with cross-ticks)
- Seaplane Bases (square with cross-ticks)
- State Capital (square with cross-ticks)
- County Seat (square with cross-ticks)
- Post Office (circle with cross-ticks)
- Summer P. O. (circle with cross-ticks)
- Village, Not a P. O. (circle with cross-ticks)
- Railway Sta. (circle with cross-ticks)

Population

- 1,000 to 2,500 (circle with cross-ticks)
- 2,500 to 5,000 (circle with cross-ticks)
- 5,000 to 10,000 (circle with cross-ticks)
- 10,000 to 25,000 (circle with cross-ticks)
- 25,000 to 100,000 (circle with cross-ticks)
- Over 100,000 (circle with cross-ticks)

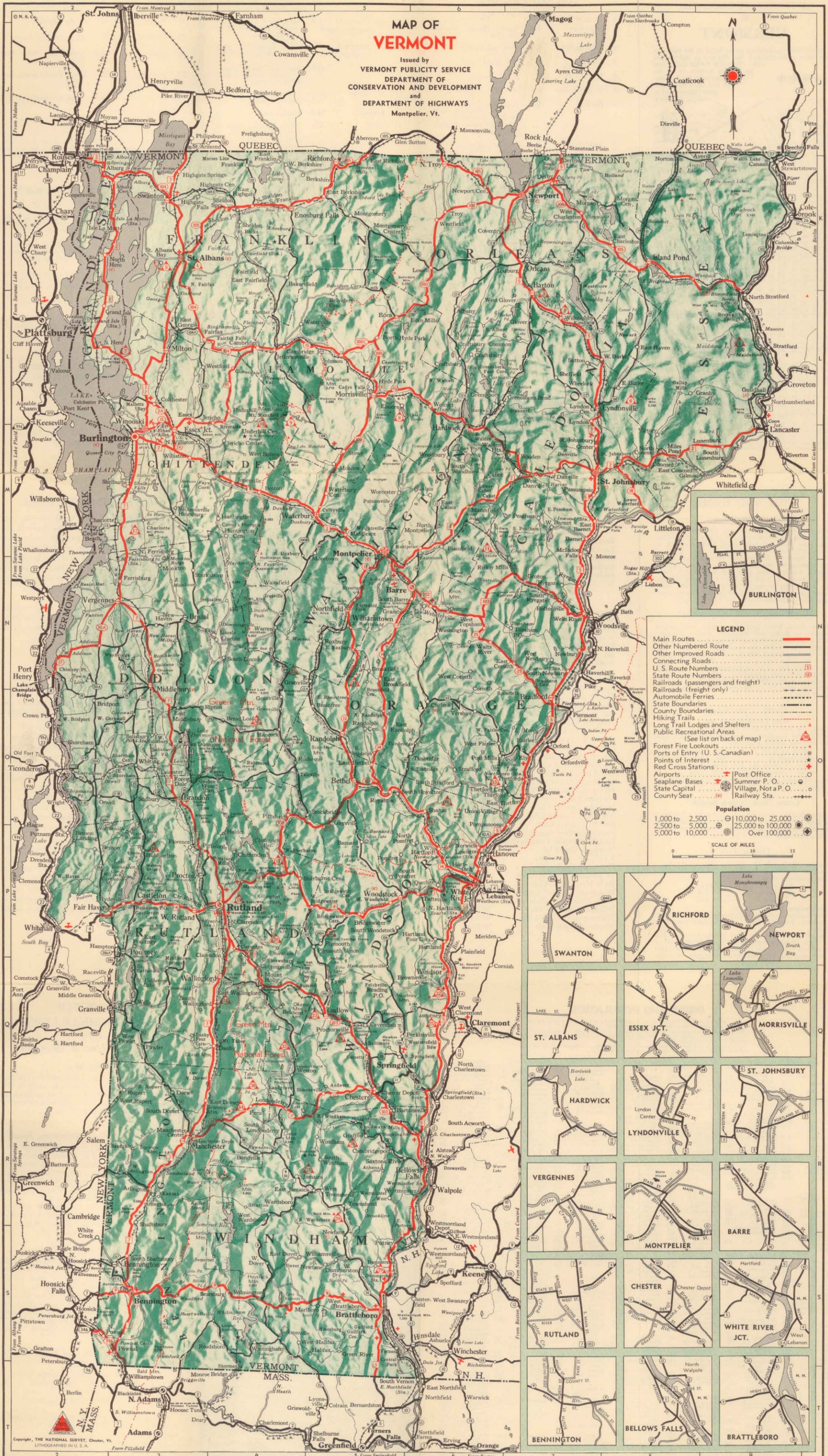
SCALE OF MILES

0 5 10 15



MAP OF VERMONT

Issued by
VERMONT PUBLICITY SERVICE
DEPARTMENT OF CONSERVATION AND DEVELOPMENT
and
DEPARTMENT OF HIGHWAYS
Montpelier, Vt.



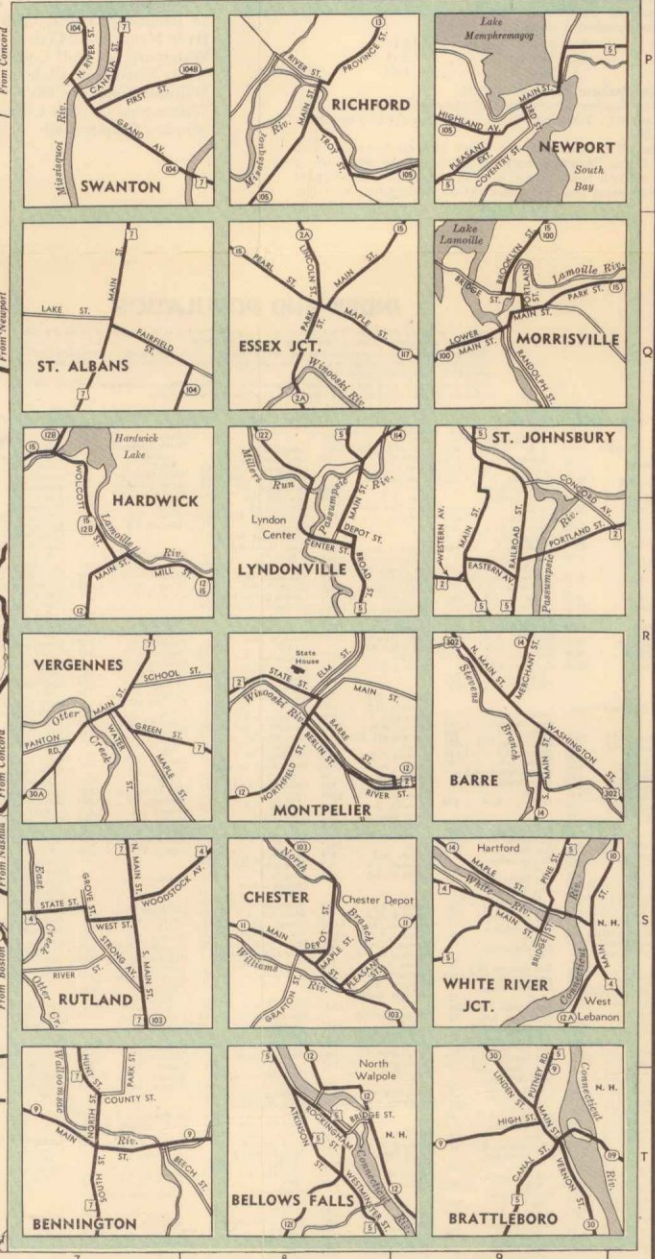
LEGEND

- Main Routes (thick red line)
- Other Numbered Route (thin red line)
- Other Improved Roads (dashed line)
- Connecting Roads (dotted line)
- U. S. Route Numbers (numbered red line)
- State Route Numbers (numbered blue line)
- Railroads (passengers and freight) (black line with cross-ticks)
- Railroads (freight only) (black line with cross-ticks)
- Automobile Ferries (dashed line with cross-ticks)
- State Boundaries (dashed line)
- County Boundaries (dotted line)
- Hiking Trails (dashed line)
- Long Trail Lodges and Shelters (triangle with 'A')
- Public Recreational Areas (triangle with 'R')
- Forest Fire Lookouts (triangle with 'F')
- Points of Entry (U. S.-Canadian) (star)
- State Capital (star)
- Red Cross Stations (star)
- Airports (square with 'A')
- Seaplane Bases (square with 'S')
- Village, Not a P. O. (circle with 'V')
- County Seat (circle with 'C')
- Post Office (circle with 'P')
- Summer P. O. (circle with 'S')
- Railway Sta. (circle with 'R')

Population

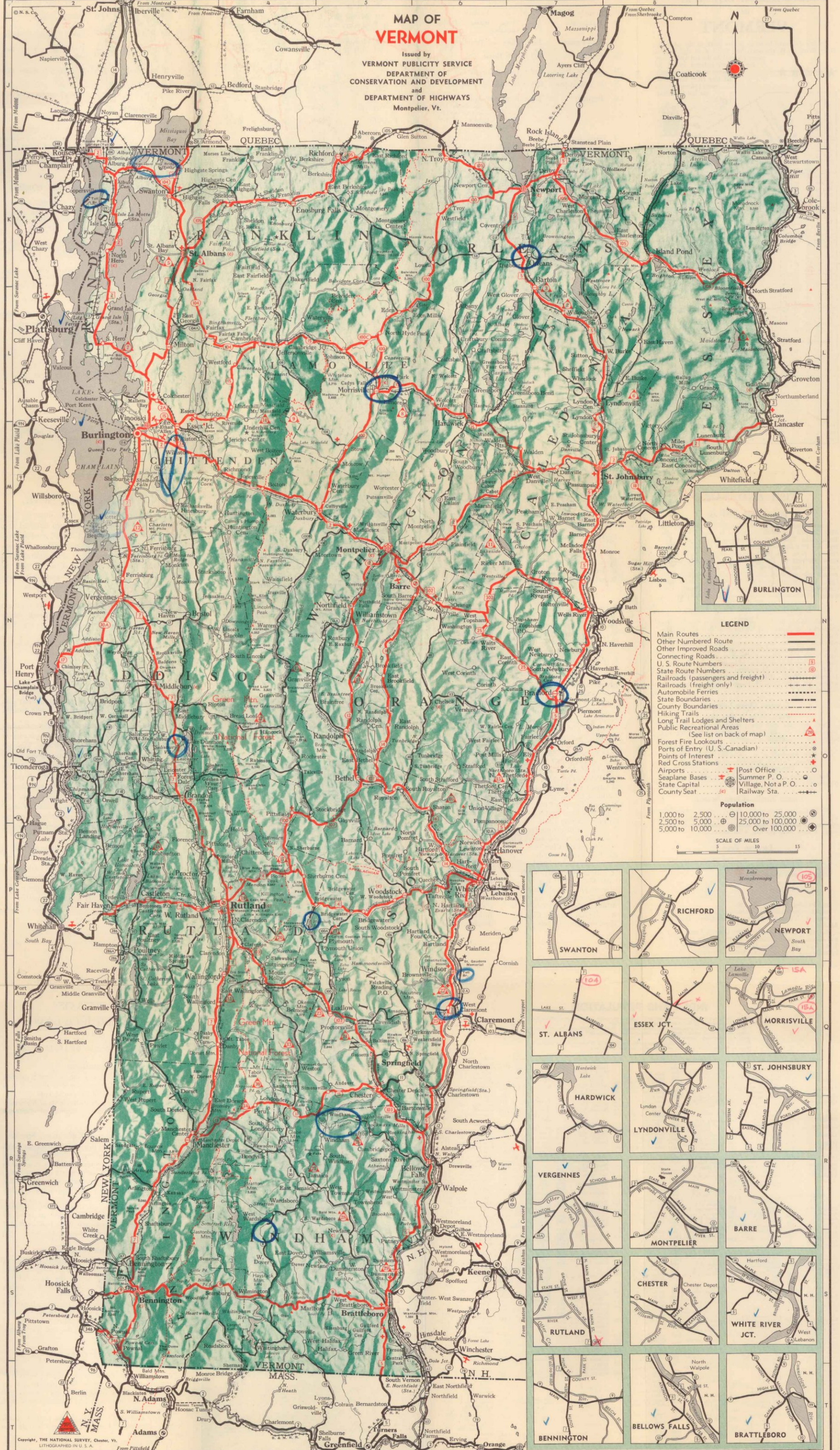
- 1,000 to 2,500 (circle with '1')
- 2,500 to 5,000 (circle with '2')
- 5,000 to 10,000 (circle with '3')
- 10,000 to 25,000 (circle with '4')
- 25,000 to 100,000 (circle with '5')
- Over 100,000 (circle with '6')

SCALE OF MILES
0 5 10 15



MAP OF VERMONT

Issued by
VERMONT PUBLICITY SERVICE
DEPARTMENT OF CONSERVATION AND DEVELOPMENT
and
DEPARTMENT OF HIGHWAYS
Montpelier, Vt.



LEGEND

- Main Routes (thick red line)
- Other Numbered Route (thin red line)
- Other Improved Roads (dashed line)
- Connecting Roads (dotted line)
- U. S. Route Numbers (numbered line)
- State Route Numbers (numbered circle)
- Railroads (passengers and freight) (line with cross-ticks)
- Railroads (freight only) (line with cross-ticks)
- Automobile Ferries (line with wavy ticks)
- State Boundaries (dashed line)
- County Boundaries (dotted line)
- Hiking Trails (line with cross-ticks)
- Long Trail Lodges and Shelters (triangle with cross)
- Public Recreational Areas (triangle with cross)
- Forest Fire Lookouts (triangle with cross)
- Points of Entry (U. S.-Canadian) (line with cross-ticks)
- Points of Interest (star)
- Red Cross Stations (star)
- Airports (circle with cross)
- Seaplane Bases (circle with cross)
- State Capital (circle with cross)
- County Seat (circle with cross)
- Post Office (circle with cross)
- Summer P. O. (circle with cross)
- Village, Not a P. O. (circle with cross)
- Railway Sta. (circle with cross)

Population

- 1,000 to 2,500 (circle with cross)
- 2,500 to 5,000 (circle with cross)
- 5,000 to 10,000 (circle with cross)
- 10,000 to 25,000 (circle with cross)
- 25,000 to 100,000 (circle with cross)
- Over 100,000 (circle with cross)

SCALE OF MILES

0 5 10 15

