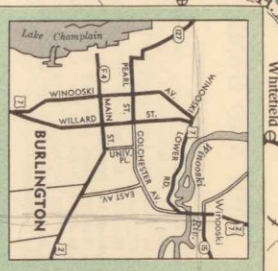
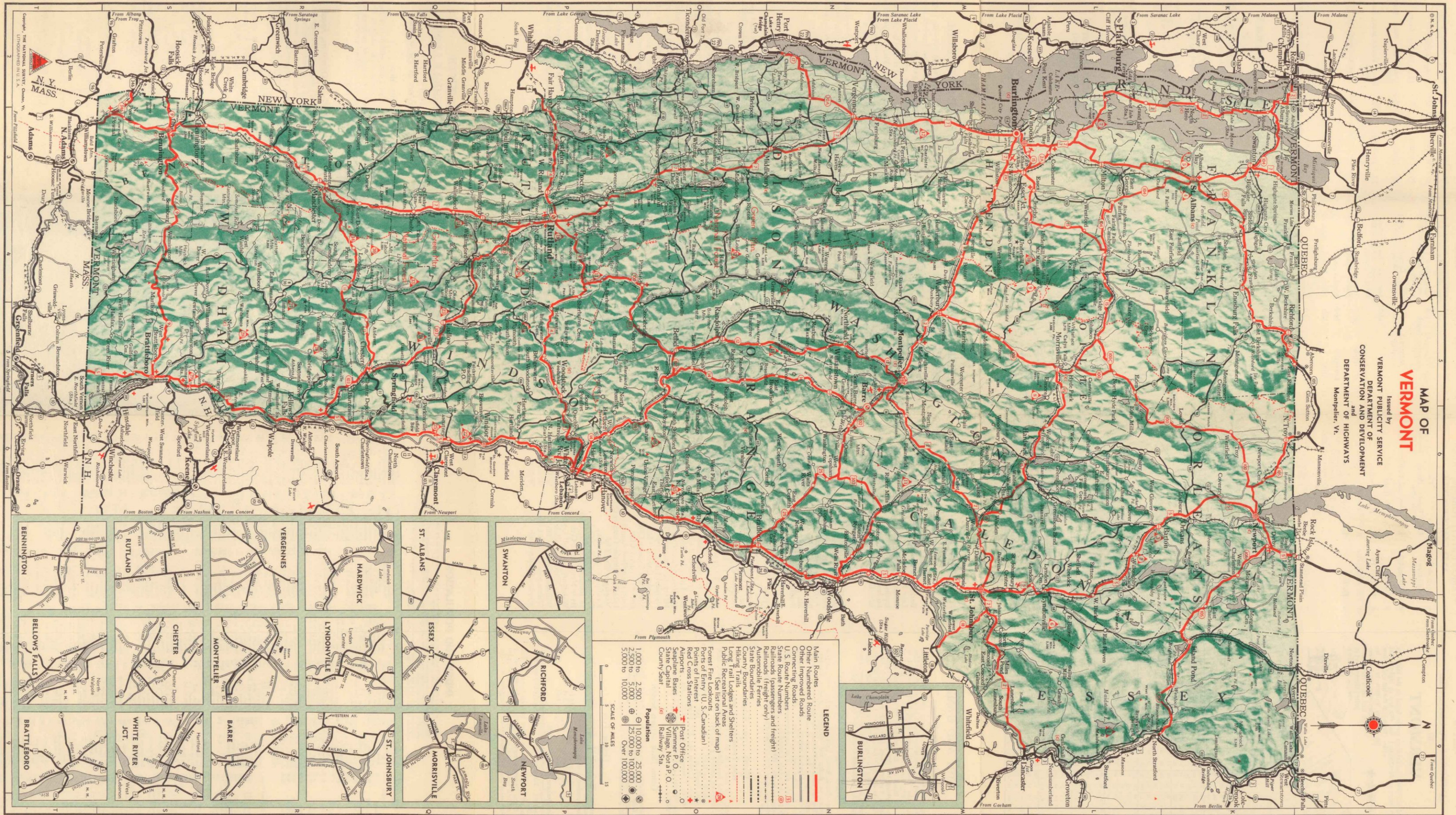


MAP OF VERMONT

Issued by
VERMONT PUBLICITY SERVICE
 DEPARTMENT OF
 CONSERVATION AND DEVELOPMENT
 and
 DEPARTMENT OF HIGHWAYS
 Montpelier, Vt.



LEGEND

- Main Routes
- Other Numbered Route
- Connecting Roads
- U.S. Route Numbers
- State Route Numbers and freight
- Railroads (passenger only)
- Automobile Ferries
- State Boundaries
- County Boundaries
- Hiking Trails
- Long Trail Lodges and Shelters
- Public Recreational Areas
- Forest Fire Lookouts
- Points of Entry (U.S.-Canadian)
- Red Cross Stations
- Airports
- State Capitals
- State Capital
- County Seat

Population

- 1,000 to 2,500
- 2,500 to 10,000
- 10,000 to 25,000
- 25,000 to 100,000
- Over 100,000

SCALE OF MILES

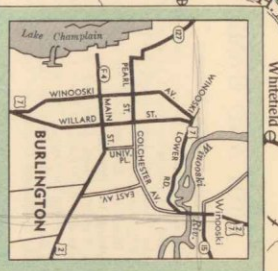
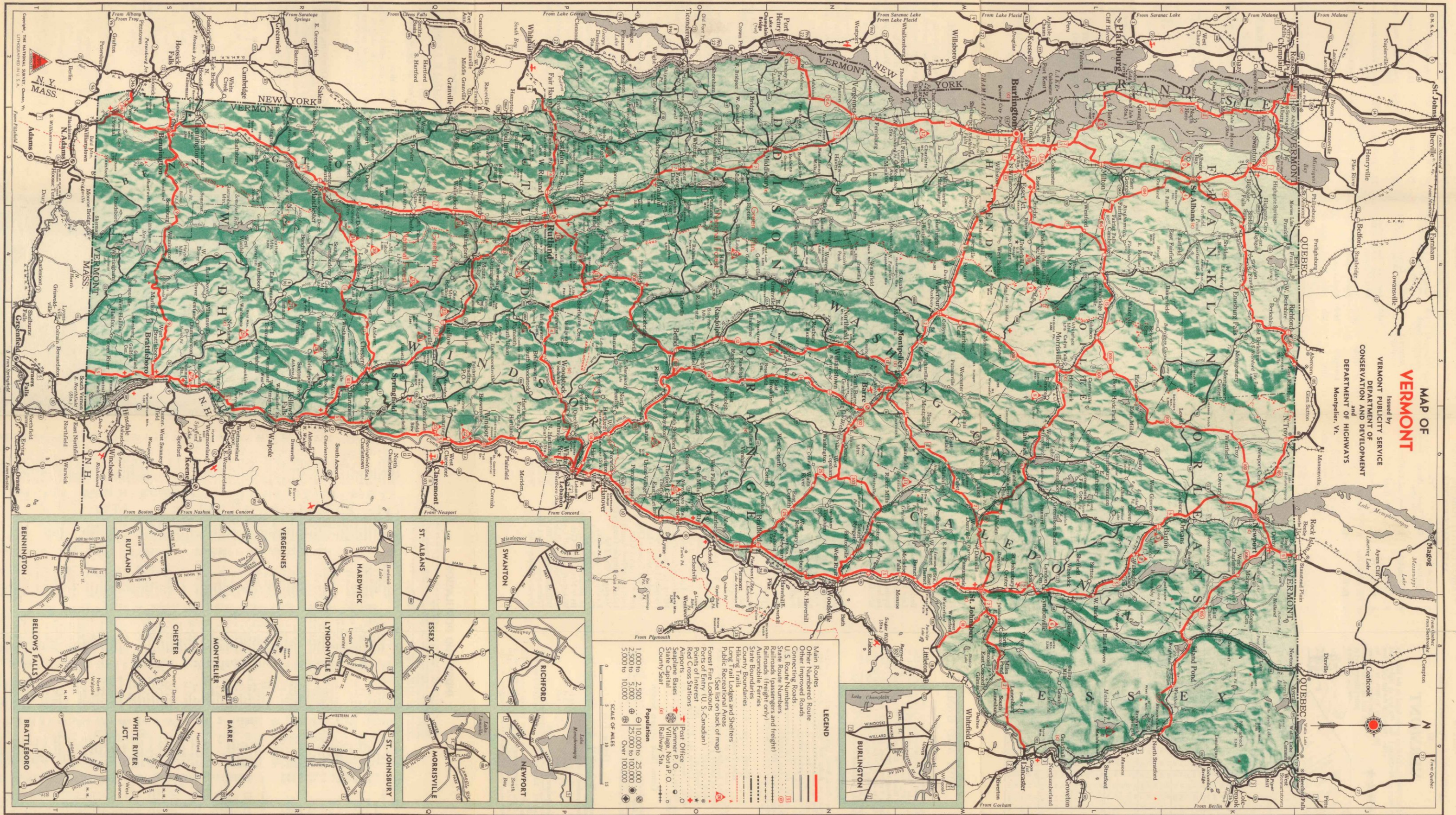
0 5 10 15

BENNINGTON	VERGENNES	ST. ALBANS	SWANTON
RUTLAND	HARDWICK	ESSEX JCT.	RICHFORD
BELLOWS FALLS	CHESTER	LYNDONVILLE	NEWPORT
BRATTLEBORO	MONTPELIER	BARRE	MORRISVILLE
	WHITE RIVER JCT.	ST. JOHNSBURY	

Copyright © THE NATIONAL SURVEY COMPANY, INC., VERMONT, U.S.A.

MAP OF VERMONT

Issued by
VERMONT PUBLICITY SERVICE
 DEPARTMENT OF
 CONSERVATION AND DEVELOPMENT
 and
 DEPARTMENT OF HIGHWAYS
 Montpelier, Vt.



LEGEND

- Main Routes
- Other Numbered Route
- Connecting Roads
- U.S. Route Numbers
- State Route Numbers and freight
- Railroads (Passenger only)
- Automobile Ferries
- State Boundaries
- County Boundaries
- Hiking Trails
- Long Trail Lodges and Shelters
- Public Recreational Areas
- Forest Fire Lookouts
- Points of Entry (U.S.-Canadian)
- Red Cross Stations
- Airports
- State Capitals
- County Seats

Population

- 1,000 to 2,500
- 2,500 to 10,000
- 10,000 to 25,000
- 25,000 to 100,000
- Over 100,000

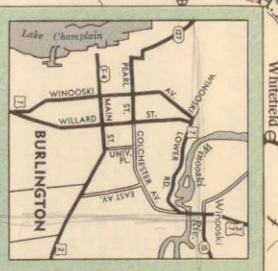
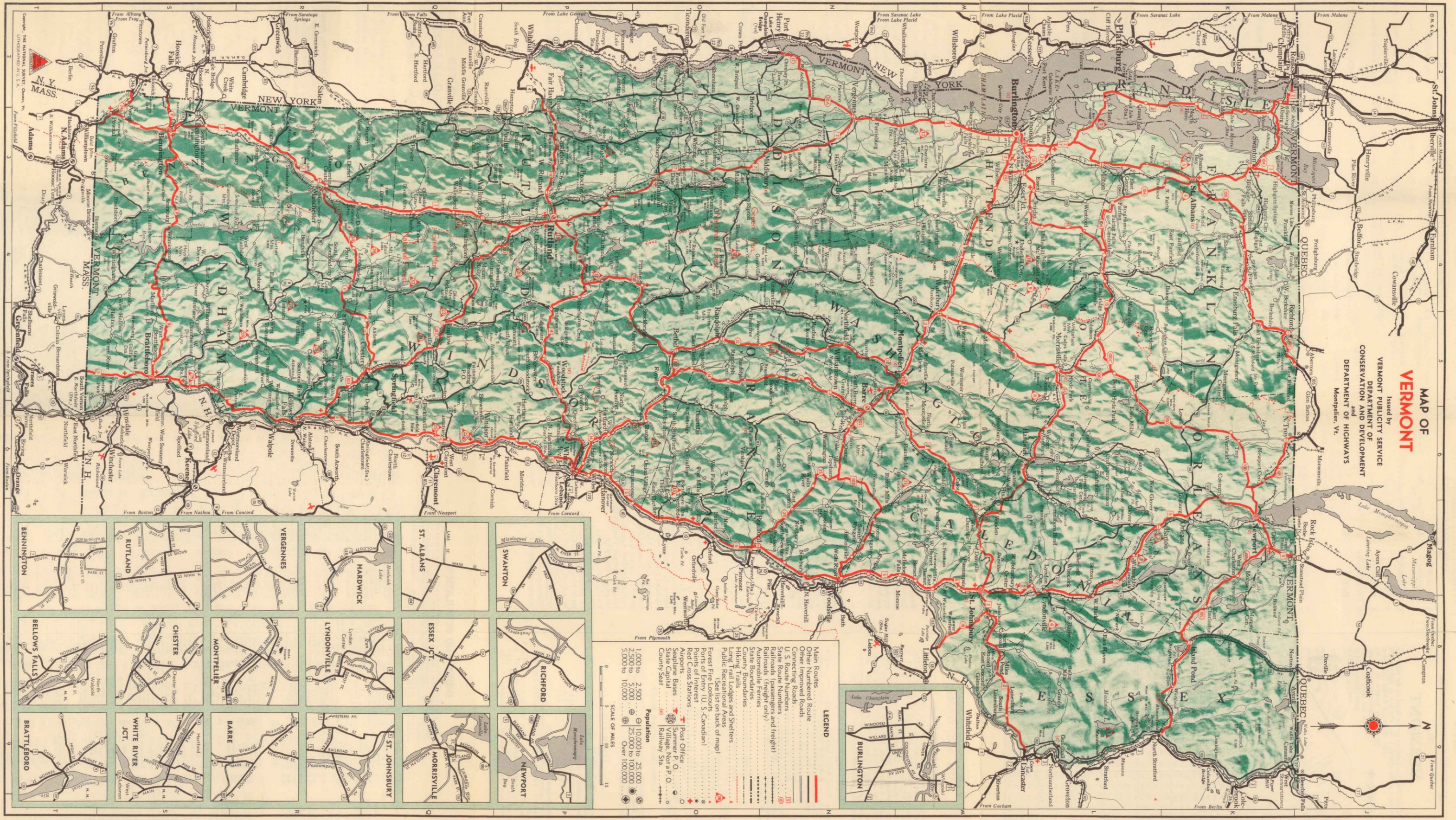
SCALE OF MILES
 0 5 10 15

BENNINGTON	VERGENNES	ST. ALBANS	SWANTON
RUTLAND	HARDWICK	ESSEX JCT.	RICHFORD
BELLOWS FALLS	CHESTER	LYNDONVILLE	NEWPORT
BRATTLEBORO	MONTPELIER	ST. JOHNSBURY	MORRISVILLE
	BARRE		
	WHITE RIVER JCT.		

Copyright © THE NATIONAL SURVEY COMPANY, INC., VERMONT, U.S.A.

MAP OF VERMONT

Issued by
VERMONT PUBLICITY SERVICE
 DEPARTMENT OF
 CONSERVATION AND DEVELOPMENT
 and
 DEPARTMENT OF HIGHWAYS
 Montpelier, Vt.



LEGEND

- Main Routes
- Other Numbered Route
- Other Improved Roads
- Connecting Roads
- U.S. Route Numbers
- State Route Numbers and freight
- Railroads (passenger only)
- Automobile Ferries
- State Boundaries
- County Boundaries
- Hiking Trails
- Long Trail Lodges and Shelters
- Public Recreational Areas
- Forest Fire Lookouts
- Points of Entry (U.S.-Canadian)
- Red Cross Stations
- Post Office
- Summer P.O.
- State Capital
- County Seat
- Railway Sta.

Population

- 1,000 to 2,500
- 2,500 to 5,000
- 5,000 to 10,000
- 10,000 to 25,000
- 25,000 to 100,000
- Over 100,000

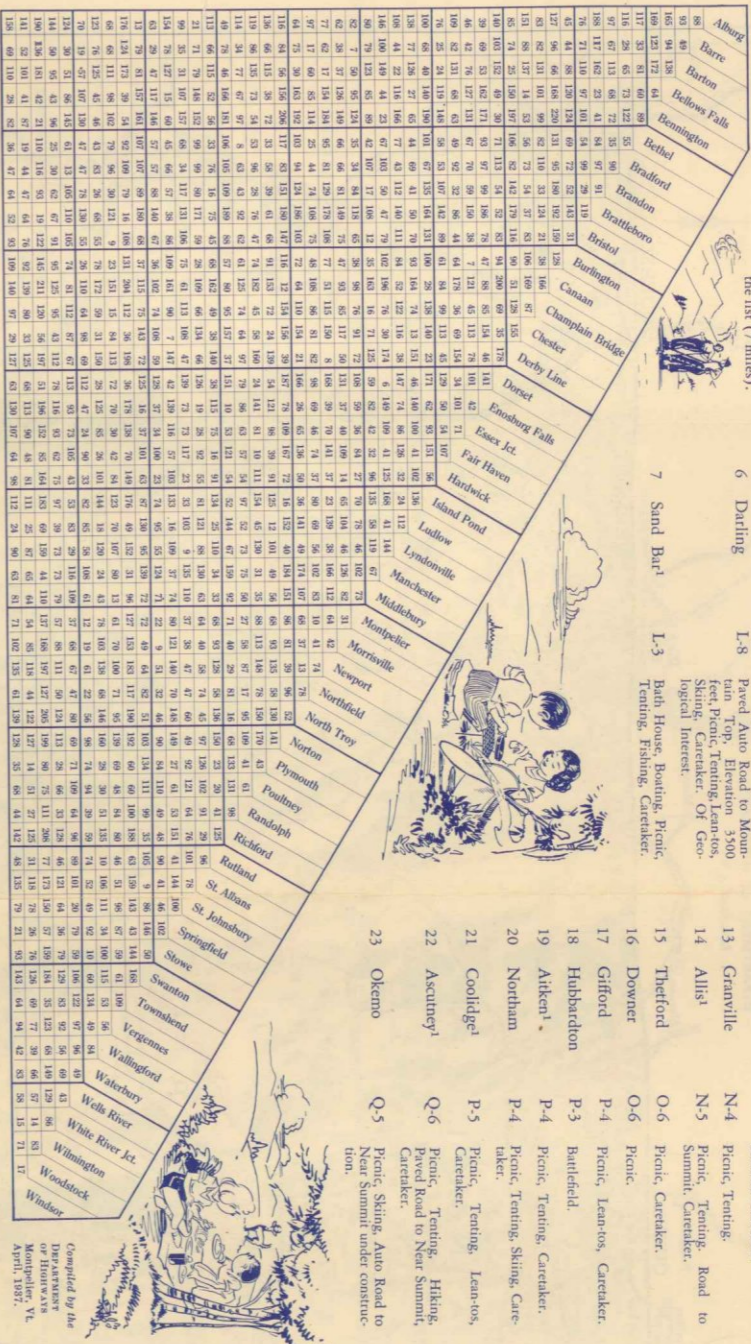
SCALE OF MILES

0 5 10 15

BENNINGTON	VERGENNES	ST. ALBANS	SWANTON
RUTLAND	HARDWICK	ESSEX JCT.	RICHFORD
BELLOWS FALLS	CHESTER	LYNDONVILLE	NEWPORT
BRATTLEBORO	MONTPELIER	BARRE	MORRISVILLE
	WHITE RIVER JCT.	ST. JOHNSBURY	

Copyright © THE NATIONAL SURVEY COMPANY, INC., VERMONT, U.S.A.

TABLE OF APPROXIMATE DISTANCES IN VERMONT



To find distances between points listed in the table (as from Barre to Montpelier), find the first in alphabetical order (Barre) in the list and follow the vertical column to an intersection with the horizontal line from the second point (Montpelier) in the list (7 miles).

VERMONT STATE FORESTS, PARKS AND CAMPGROUNDS

No.	Forest or Park	Location	Facilities
1	Madisonet ¹	L-9	Picnic, Hiking, Fishing, Cretaker.
2	Willoughby ¹	L-7	Picnic and Tenting.
3	Crystal ¹	L-7	Bath House.
4	Bellevue Hill	K-3	Picnic, Cretaker.
5	St. Albans Bay	K-3	Bath House, Cretaker.
6	Darling	L-8	Paved Auto Road to Mountain Top, Elevating Lean-tos, Sking, Cretaker. Of Geological Interest.
7	Sand Bar ¹	L-3	Bath House, Boatting, Picnic, Tenting, Fishing, Cretaker.
8	Elmore	L-5	Bath House, Boatting, Fishing, Picnic, Cretaker.
9	Mt. Mansfield	L-4	Picnic, Sking, Tenting, Lean-tos, Hiking, Road to Mountain Top, Cretaker.
10	Mt. Mansfield Underhill	L-4	Picnic, Camping, Lean-tos, Sking, Hiking, Cretaker.
11	Groton ¹	M-7	Five acres, Tenting, Picnic, Swimming, Fishing, Hiking, Sking, Cretaker.
12	Mt. Philo	M-3	Tenting, Picnic, Road to Summit, Cretaker.
13	Granville	N-4	Picnic, Tenting.
14	Allis ¹	N-5	Picnic, Tenting, Road to Summit, Cretaker.
15	Thetford	O-6	Picnic, Cretaker.
16	Dowser	O-6	Picnic.
17	Gifford	P-4	Picnic, Lean-tos, Cretaker.
18	Hubbardton	P-3	Battlefield.
19	Aiken ¹	P-4	Picnic, Tenting, Cretaker.
20	Northam	P-4	Picnic, Tenting, Sking, Cretaker.
21	Coolidge ¹	P-5	Picnic, Tenting, Lean-tos, Cretaker.
22	Acuney ¹	Q-6	Picnic, Tenting, Hiking, Paved Road to Near Summit, Cretaker.
23	Okemo	Q-5	Picnic, Sking, Auto Road to Near Summit, under construction.
24	Proctor Pipet ¹	Q-5	Picnic, Tenting, Cretaker.
25	Wilgus	Q-6	Picnic, Cretaker.
26	Grafton	R-5	Picnic, Tenting, Cretaker.
27	Jamaica	R-4	Undeveloped, Picnic, Bathing.
28	Townshend ¹	R-5	Picnic, Tenting, Sking, Cretaker.
29	Dutton Pines	S-5	Picnic, Cretaker.
*Under construction 1941. †To be ready in 1941. ‡Trailer site.			

GREEN MOUNTAIN NATIONAL FOREST

No.	Location	Facilities
30	Harpwood Pond	Swimming, Camping, Picnic-ing, Nature Trail, Cretaker and Life Guards.
31	White Rocks	Picnicking, Nature Trail to Lookout point, Interesting to Geologist and Botanist.
32	Texas Falls	Picnicking, Improved Nature Trail to vantage point for view of Falls and Gorge.
33	Greendale ¹	Picnicking, Camping.
34	Broomly Mtn.	Winter Sports Area, 11 miles of down mountain runs.

VERMONT OFFICIAL TOURIST INFORMATION BOOTHS, 1941

Bennington	St. Johnsbury
Rutland	Barre
Vergennes	Montpelier
Burlington	White River
Colchester	White River Junction
Newport	Braintree

VISIT THE LONG TRAIL

From one end of Vermont to the other the Long Trail follows the skyline of a two hundred mile mountain range, dipping into valleys, climbing over summits, passing through magnificent forests, sometimes skirting lakes. In all of the United States there is no foot-path like this. You Can Visit the Trail or one of the Beautiful Summits in a Single Day's Trip from Various Convenient Points.

On either side of the mountain range approach trails lead up to the Long Trail from nearby motor highways. In addition there are highways that cross the Trail itself.

HEALTH CONDITIONS IN VERMONT

All places offering lodging and meals must pass inspection by State Department of Public Health. Vermont is justly known as a healthy state, and for years has maintained its position as a leader in the control of communicable diseases. Typhoid fever is almost unknown in this state, a result which has been accomplished by close supervision of the State Department of Public Health over all public water supplies, sewage disposal and other possible means of infection. Boys' and girls' camps are visited frequently by an experienced sanitary engineer, and camp owners make constant use of the facilities of the Department whenever sanitary or disease problems arise.

Besides the sanitary engineering division, the Department maintains active divisions of laboratory, communicable diseases, tuberculosis, infantile paralysis and public health nursing, all of which are at the service of tourists, campers and visitors, receiving attention either directly at the headquarters at Burlington, or through local health officers in the cities or towns.

SYNOPSIS OF MOTOR VEHICLE LAWS

SUBJECT TO CHANGES BY LEGISLATURE

Registration
Under the Vermont law a non-resident is exempt from registration of a pleasure car while in this state as a visitor, provided the state of his residence grants the same reciprocity to residents of Vermont. No permit or registration required of chartered buses.

Careless or Negligent Operators; Speed
The laws of Vermont provide that a motor vehicle shall not be operated on a public highway in a careless or negligent manner, nor in a manner to endanger the safety, life, or property of any person, and the speed limit for pleasure cars is fifty miles per hour, and for pleasure cars with trailer coaches or house trailers forty miles per hour.
Cities and incorporated villages have authority to make special regulations relative to speed of motor vehicles provided such limit is fixed at not less than twenty miles per hour.

Accidents; Duties of Operator
The operator of any motor vehicle involved in an accident must immediately stop and give his name, residence, license number and the name of the owner of the motor vehicle then under his control, to the party whose person or property is injured. The operator is further required to report the accident, within twenty-four hours, to the Commissioner of Motor Vehicles at Montpelier, Vt., if there are personal injuries or the damages exceed \$25.

Not Over Three Persons Allowed on Front Seat

A person must not operate a motor vehicle in Vermont, with more than three persons on the front seat, or in the front or driving compartment of a motor vehicle occupied by the operator of such vehicle.
In any emergency apply to the nearest motor vehicle inspector. They are for your service, aid and protection.
For any information relative to the motor vehicle laws, address the Motor Vehicle Department, Montpelier, Vermont.

GREEN MOUNTAIN HORSE ASSOCIATION BRIDLE PATHS

The roads used for these so-called "Bridle Paths" are the dirt roads which run throughout the entire State, generally higher in the hills than the main motor roads. They are soft surfaced, shady, always beautiful and very seldom used by motor cars. At present there are over 1,000 miles of these roads marked, with stops arranged every ten to twenty miles for the riders' convenience for luncheon or over night.

One can generally count on the bridle paths being in good condition from May 1st to November 1st, and in some places for a longer season. The Association marks the routes with arrows, with the letters "G. M. H. A." and issues a guide book giving the names of farm houses, inns and hotels where riders and their horses will find comfortable quarters. Any one may become a member of the Association upon payment of the dues of \$2.00 a year. The guide book, maps and all necessary information as to condition of routes, expenses of a trip, rental of horses, lodgings, equipment, etc., will be supplied by the Green Mountain Horse Association, Rutland, Vermont.

The Publicity Service, Department of Conservation and Development, desires to be of help to all persons interested in Vermont and will gladly give information regarding homes, boarding places, locations for summer homes, tours, recreational attractions and opportunities for hunting and fishing. The following publications will be furnished: "Vermont Hunting and Fishing"; "Vermont Tours"; "Directory of Hotels, Tourist Homes and Cabins"; "Vermont Farms and Summer Homes for Sale"; "Cottages, Camps and Furnished Homes for Rent" with a list of boys' and girls' camps; folder, "Undisputed Vermont." Special requests for information not contained in the foregoing are welcomed and will be answered as fully as possible. Address inquiries to
Vermont Publicity Service
Department of Conservation and Development
State House
Montpelier, Vermont

GOLF COURSES IN VERMONT

Name	Location
Burlington Country Club	Burlington
Lake Morey Inn	Manchester
Ekwanok Country Club	Manchester
Equinox Links Club	Rutland
Rutland Country Club	Rutland
Woodstock Country Club	Woodstock
9-Hole Golf Courses	
Barre Country Club	Barre
Midway Golf Course	Barre
Barton Country Club	Barton
Vergennes Golf Club	Basin Harbor
Bellows Falls Country Club	Basin Harbor
Mt. Anthony Country Club	Berlin
Bradford Golf Club	Bradford
Braintree Country Club	Braintree
Bristol Country Club	Bristol
New Washburner Golf Club	Burlington
Kingsbery Golf Club	Derby
Dorset Field Club	Dorset
Hampton Golf Club	Fair Haven
Mountain View Country Club	Greensboro
Hardwick Country Club	Hardwick
Lamoille Country Club	Hyde Park
Lake Bonhomme Country Club	Lake Bonhomme
The London Golf Club	Lyndonville
Lake Champlain Golf Club	Mallett's Bay
Middlebury Country Club	Middlebury
Montpelier Country Club	Montpelier
Northport Country Club	Northport
Northford Country Club	Northford
Orleans Country Club	Orleans
Proctor-Pitstford Country Club	Pitstford
Lake St. Catherine Country Club	Poulinville
Montage Golf Club	Randolph
Richford Country Club	Richford
Champlain Country Club	St. Albans
St. Johnsbury Country Club	St. Johnsbury
Hyde Manor Golf Club	Sudbury
Waterbury Inn Golf Course	Waterbury
Wells-Wood Golf Club	Wells River
Williston Country Club	Williston
Wilmington Country Club	Wilmington
Windsor Country Club	Windsor

FISH AND GAME

Fish—Open Seasons

Trout—Brook, Brown, Lock Leven, Golden, Steelhead, Gentling, Black Spotted and Rainbow—May 1 to Aug. 13. Coldwater, Lake Trout and Arctic Char—May 1 to Aug. 13. Catfish—Sept. 1 to Nov. 1. See General Laws for exceptions to the above applying to: Forest Pond and Harvey's Lake in Caledonia County; Forest Lake, Big Averill Lake, Little Averill Lake and Back Pond in Essex County; Willoughby Lake, Lake Memphremagog, Seymour Lake, Echo Lake, Shadow Lake and Parker Pond in Orleans County; Chittenden Lake in Rutland County; and Lake Champlain.

Legal Lengths and Daily Limits

Trout—Brook, Brown, Lock Leven, Golden, Steelhead (see exceptions on Barre and Willoughby Rivers). Rainbow, Gentling and Black Spotted—not less than 6 inches in length; nor more than 20 fish, nor more than 5 pounds. Lake Trout and Land-Locked Salmon—not less than 13 inches; limit 2 fish either trout or salmon or one of each. Bass—not less than 10 inches in length, and not more than 5 fish (7 fish in Lake Champlain). Pickerel—not less than 12 inches in length. Pike—Percid—not less than 12 inches in length. Pike—Percid—not more than 25 pounds. (See General Laws.)

Game—Open Season

When Lawful to Take Same
Deer, one deer with horns not less than three inches long, between November 21st and November 30th, both dates inclusive, excepting Sundays.
Rabbits or Hares..... Oct. 1-March 1
Gray Squirrels..... Oct. 1-Nov. 1
Moose, Caribou and Elk, protected at all times. Cottontail Rabbits, not protected.
(See General Laws for exception in Chittenden County on rabbits.)

Game Birds—Open Season

Ruffed Grouse (Partridge)—Oct. 1-Oct. 30. Woodcock and Ducks as regulated by the Bureau of Biological Survey. Pheasants—Wednesday and Saturday during month of October. 2 Cock Birds per day 4 for season.

License Fees

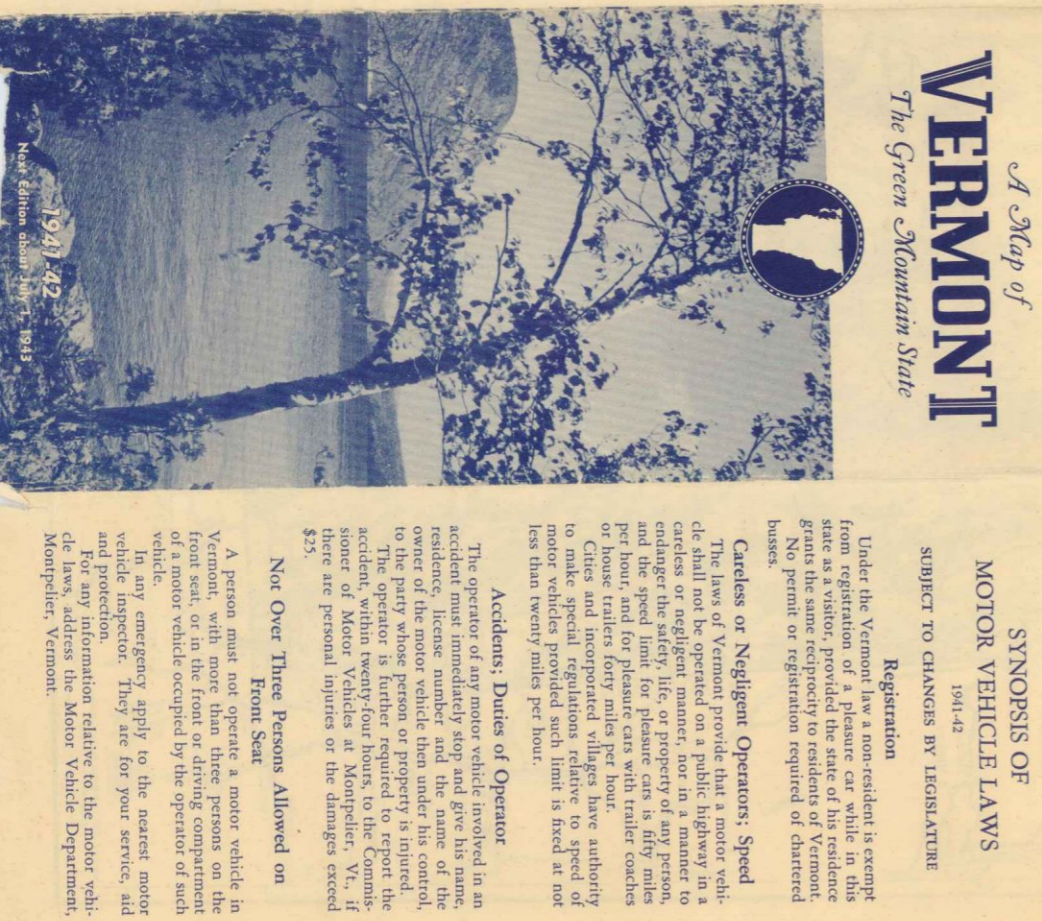
Resident Fishing—\$1.25. Resident Hunting—\$1.25. Resident Combination Hunting and Fishing—\$2.00. Non-Resident Fishing—..... \$1.15
Season..... \$1.25
14 Days..... 1.65
Non-Resident Hunting and Fishing—\$15.50.
Non-Resident Combination Hunting and Fishing—\$30.00.
Resident Trapping—\$1.25. Non-Resident Trapping—\$30.00.

For all exceptions to the above General Laws, see Fish and Game Pamphlet, copy of which will be supplied by Town Clerk when license is obtained, or sent upon request by addressing Fish and Game Service, Montpelier, Vermont.

INDEX AND POPULATION

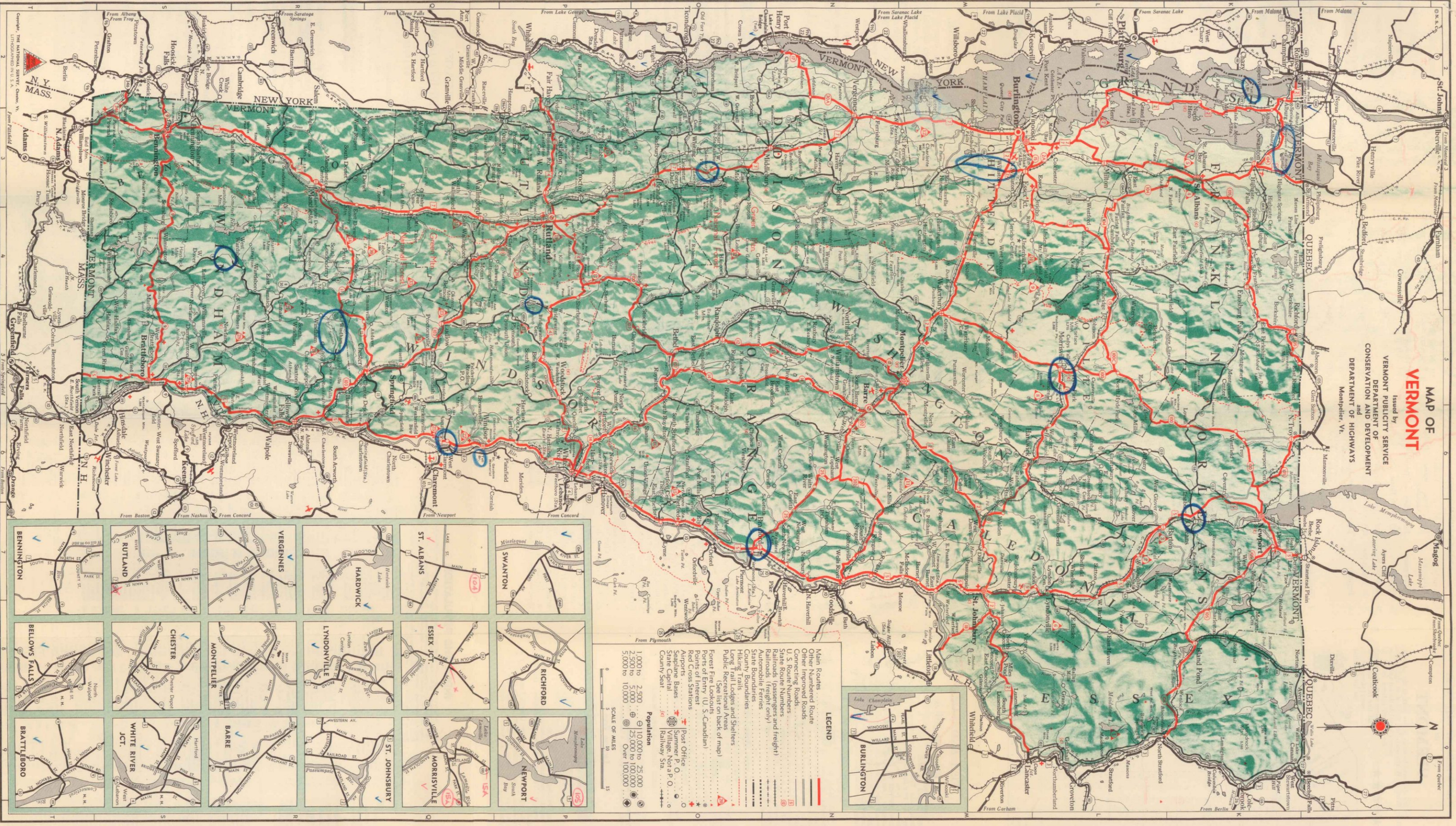
Note: The letters and figures after name (as E71) denote the town in which the population figures are in the bold. Light face figures indicate population of the town. Heavy face figures indicate population of the town. Figures in heavy face and light face figures are estimated for unincorporated villages. All others are from the 1930 Census. Figures from other sources where noted under name.

VERMONT	Counties	Population
Adams	Adams	1,107
Albany	Albany	2,896
Andover	Andover	1,139
Benning	Benning	1,207
Berlin	Berlin	1,448
Burlington	Burlington	11,726
Castleton	Castleton	1,117
Champlain	Champlain	1,228
Chittenden	Chittenden	11,726
Colchester	Colchester	1,117
Concord	Concord	1,117
Cornwall	Cornwall	1,117
Dorset	Dorset	1,117
Franklin	Franklin	1,117
Grand Isle	Grand Isle	1,117
Lamoille	Lamoille	1,117
Orange	Orange	1,117
Rutland	Rutland	1,117
Washington	Washington	1,117
Windsor	Windsor	1,117



Next Edition about July 1, 1943

MAP OF VERMONT
 Issued by
VERMONT PUBLICITY SERVICE
 DEPARTMENT OF CONSERVATION AND DEVELOPMENT
 DEPARTMENT OF HIGHWAYS
 Montpelier, Vt.



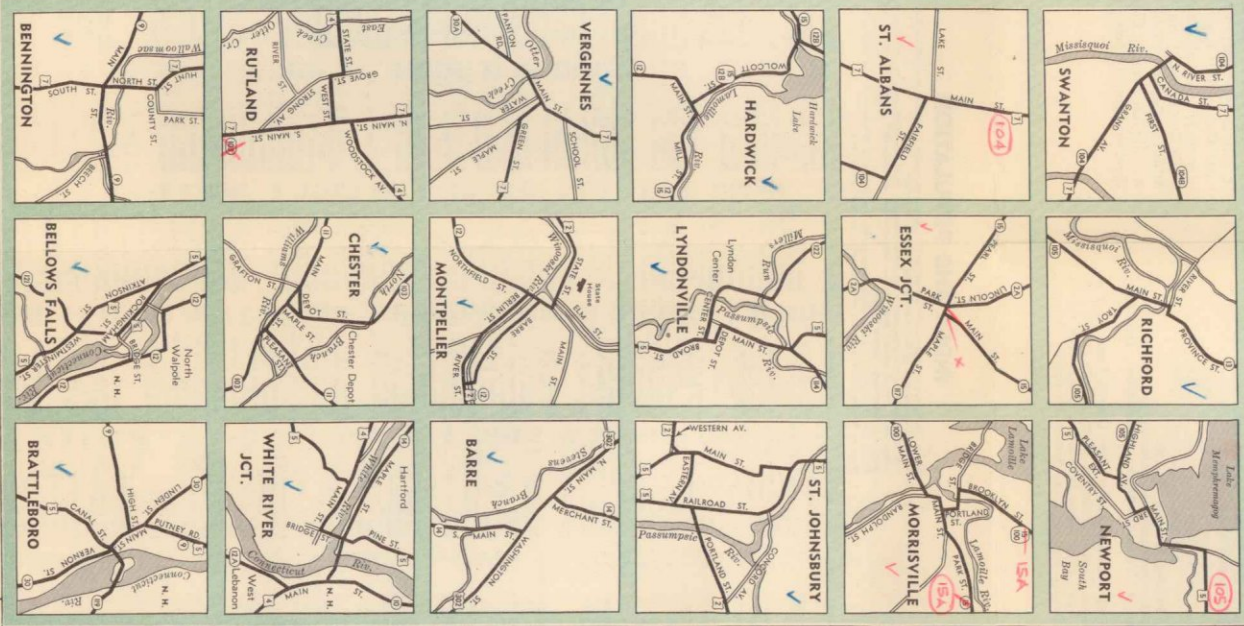
LEGEND

- Main Routes
- Other Numbered Route
- Other Inland Route
- Connecting Roads
- U. S. Route Numbers
- State Route Numbers
- Railroads (passengers and freight)
- Railroads (freight only)
- Autonomous Ferries
- State Boundaries
- County Boundaries
- Hiking Trails
- Long Trail Lodges and Shelters
- Public Recreational Areas
- Forest Fire Lookouts
- Points of Entry (U. S.-Canadian)
- Red Cross Stations
- Autogas
- State Office
- Summer P. O.
- Village Post Office
- State Capital
- Railway Sta.
- County Seat

Population

- 1,000 to 2,500
- 2,500 to 5,000
- 5,000 to 10,000
- 10,000 to 25,000
- 25,000 to 100,000
- Over 100,000

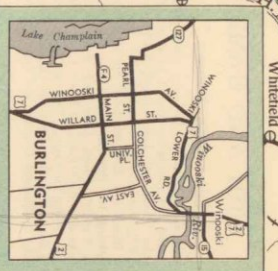
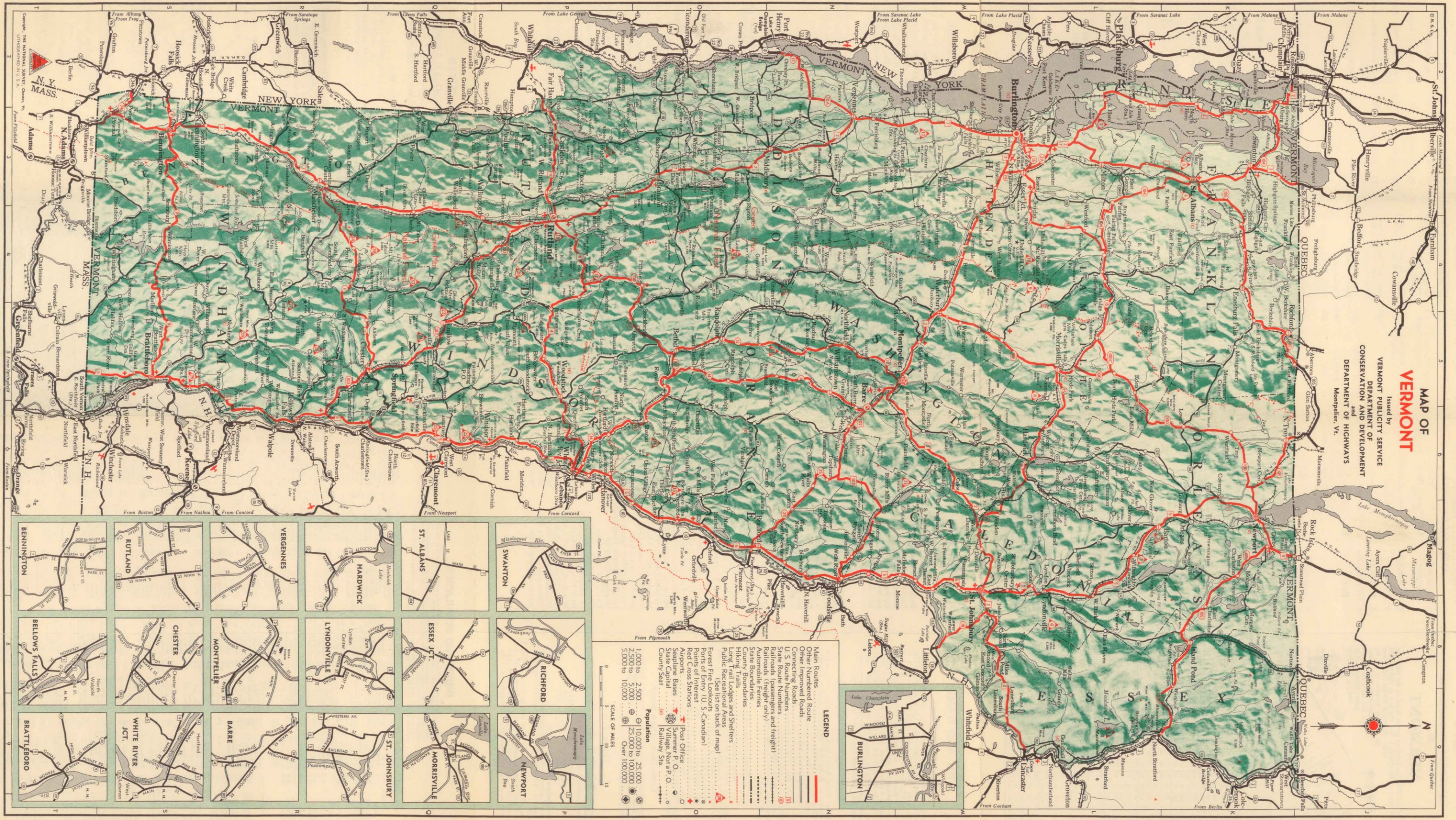
SCALE OF MILES



Copyright © THE NATIONAL SURVEY COMPANY, INC., VERMONT
 Lithographed in U. S. A.

MAP OF VERMONT

Issued by
VERMONT PUBLICITY SERVICE
 DEPARTMENT OF
 CONSERVATION AND DEVELOPMENT
 and
 DEPARTMENT OF HIGHWAYS
 Montpelier, Vt.



LEGEND

- Main Routes
- Other Numbered Route
- Other Improved Roads
- Connecting Roads
- U.S. Route Numbers
- State Route Numbers and freight
- Railroads (passenger only)
- Automobile Ferries
- State Boundaries
- County Boundaries
- Hiking Trails
- Long Trail Lodges and Shelters
- Public Recreational Areas
- Forest Fire Lookouts
- Points of Entry (U.S.-Canadian)
- Red Cross Stations
- Post Office
- Summer P.O.
- Village, Not a P.O.
- State Capital
- County Seat
- Railway Sta.

Population

- 1,000 to 2,500
- 2,500 to 5,000
- 5,000 to 10,000
- 10,000 to 25,000
- 25,000 to 100,000
- Over 100,000

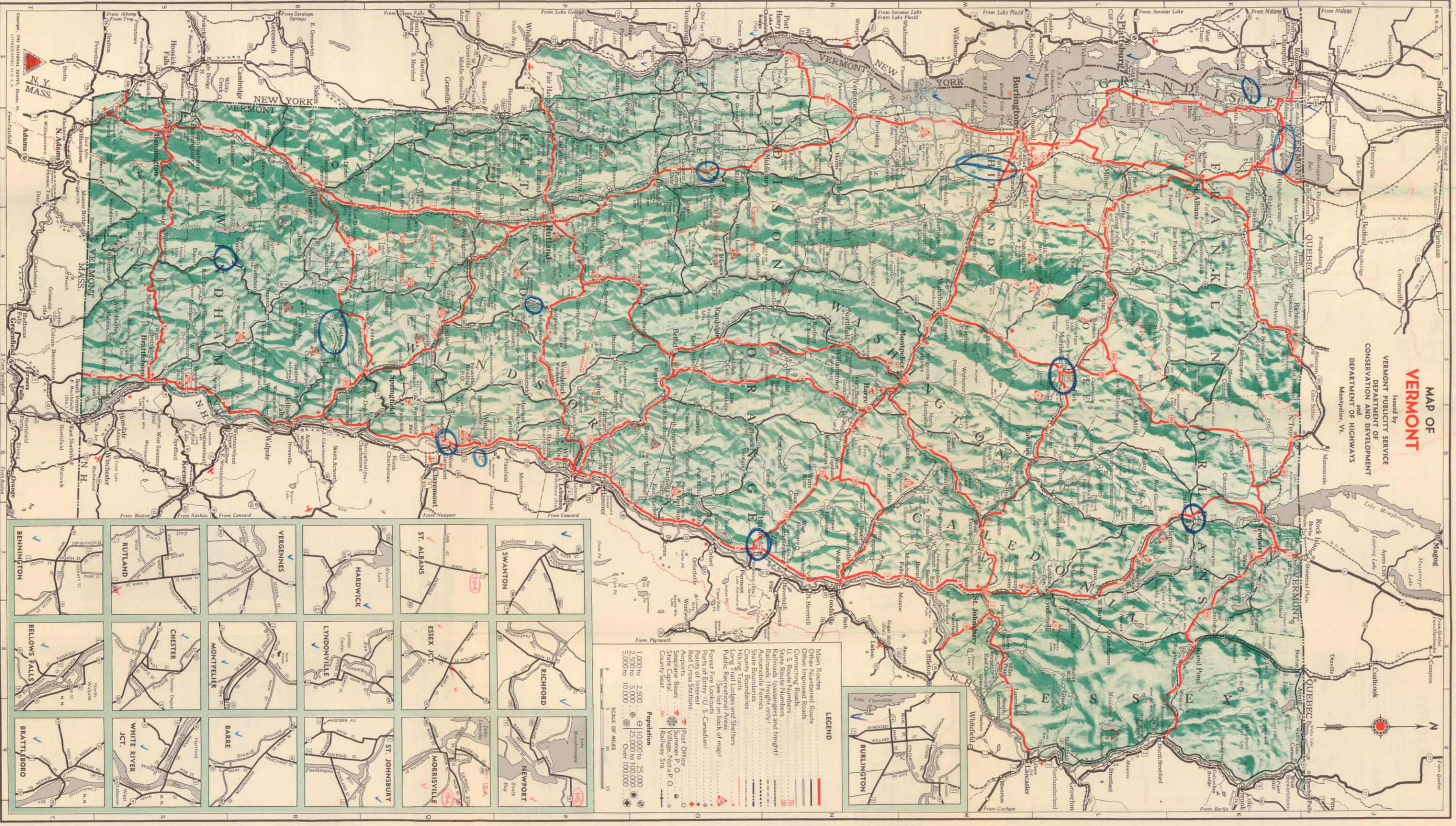
SCALE OF MILES

0 5 10 15

BENNINGTON	VERGENNES	ST. ALBANS	SWANTON
RUTLAND	HARDWICK	ESSEX JCT.	RICHFORD
BELLOWS FALLS	CHESTER	LYNDONVILLE	NEWPORT
BRATTLEBORO	MONTPELIER	ST. JOHNSBURY	MORRISVILLE
	BARRE		
	WHITE RIVER JCT.		

Copyright © THE NATIONAL SURVEY COMPANY, INC., VERMONT, U.S.A.

MAP OF VERMONT
 Issued by
VERMONT PUBLICITY SERVICE
 DEPARTMENT OF CONSERVATION AND DEVELOPMENT
 DEPARTMENT OF HIGHWAYS
 Montpelier, Vt.



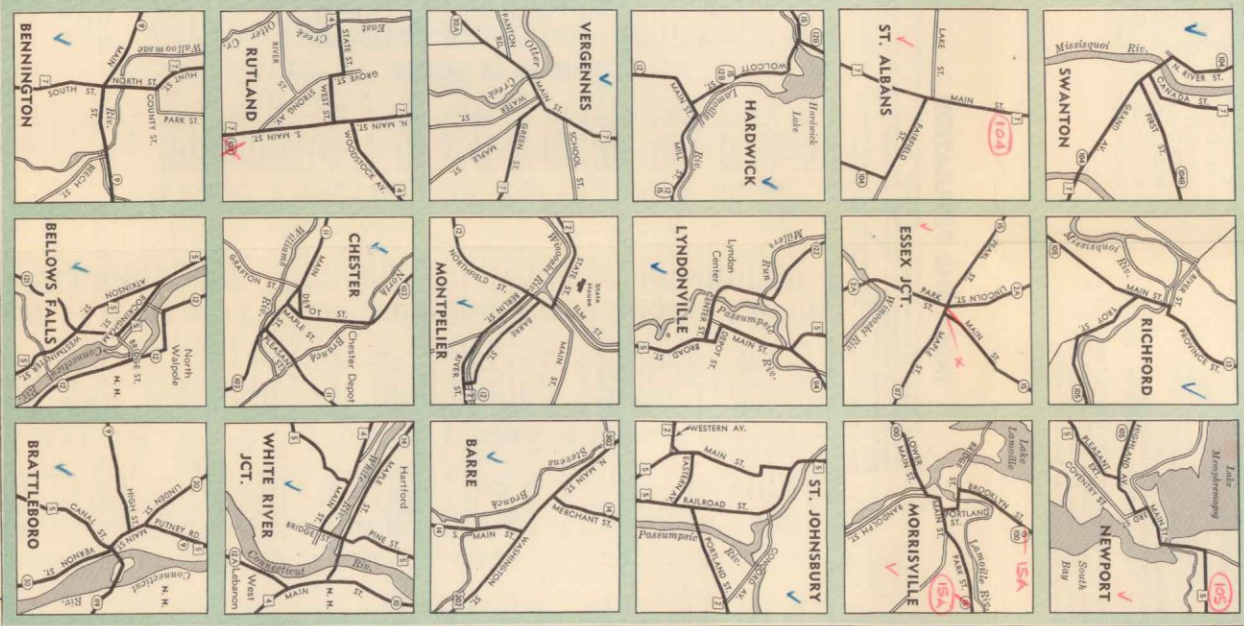
LEGEND

- Main Routes
- Other Numbered Route
- Connecting Roads
- U. S. Route Numbers
- State Route Numbers
- Railroads (passengers and freight)
- Railroads (freight only)
- Autonobile Ferries
- State Boundaries
- Hiking Trails
- Long Trail Lodges and Shelters
- Public Recreational Areas
- Forest Fire Lookouts
- Points of Entry (U. S.-Canadian)
- Red Cross Stations
- Autogas
- State Office
- Summer P. O.
- Village Post Office
- County Seat
- Railway Sta.

Population

- 1,000 to 2,500
- 2,500 to 5,000
- 5,000 to 10,000
- 10,000 to 25,000
- 25,000 to 100,000
- Over 100,000

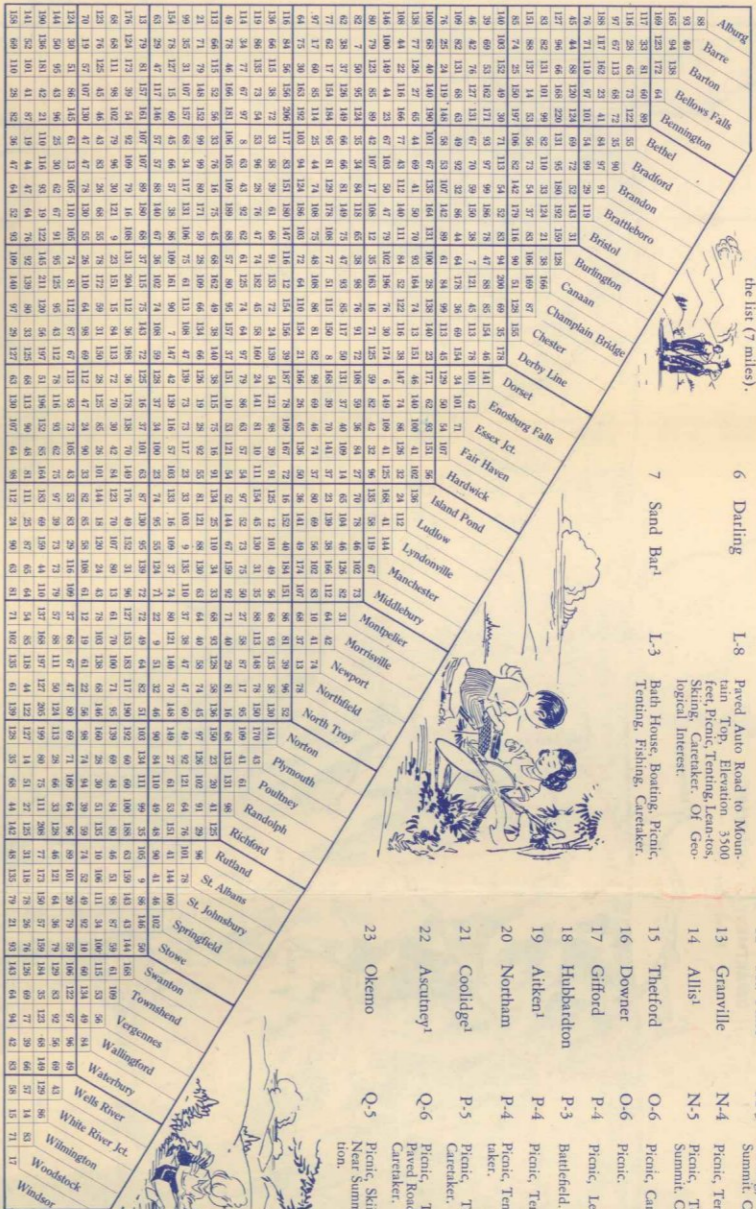
SCALE OF MILES



Copyright © THE NATIONAL SURVEY COMPANY, INC., VERMONT
 Lithographed in U. S. A.

TABLE OF APPROXIMATE DISTANCES IN VERMONT

To find distances between points listed in the table (as from Barre to Montpelier), find the first in alphabetical order (Barre) in the list and follow the vertical column to an intersection with the horizontal line from the second point (Montpelier) in the list (7 miles).



VERMONT STATE FORESTS, PARKS AND CAMPGROUNDS

No.	Forest or Park	Location	Facilities
1	Maldenston ¹	L-9	Picnic, Hiking, Fishing
2	Willoughby ¹	L-7	Picnic and Tenting
3	Crystal ¹	L-7	Bath House
4	Belleue Hill	K-3	Picnic, Caretaker
5	St. Albans Bay	K-3	Bath House, Caretaker
6	Darling	L-8	Paved Auto Road to Mountain Top, Elevation 3500 feet, Picnic, Tenting, Lean-tos, Skating, Caretaker. Of Geological Interest.
7	Sand Bar ¹	L-3	Bath House, Boat-ings, Picnic, Tenting, Fishing, Caretaker
8	Elmore	L-5	Bath House, Boat-ings, Fishing, Picnic, Caretaker
9	Mc Mansfield	L-4	Picnic, Skating, Tenting, Lean-tos, Hiking, Road to Mountain Top, Caretaker
10	Mr. Mansfield	L-4	Picnic, Camping, Lean-tos, Skating, Hiking, Caretaker
11	Gorton ¹	M-7	Five areas, Tenting, Picnic, Skating, Fishing, Hiking, Skating, Caretaker
12	Mc Philo	M-3	Tenting, Picnic, Road to Summit, Caretaker
13	Garnville	N-4	Picnic, Tenting
14	Alisa ¹	N-5	Picnic, Tenting, Road to Summit, Caretaker
15	Thetford	O-6	Picnic, Caretaker
16	Downer	O-6	Picnic
17	Gifford	P-4	Picnic, Lean-tos, Caretaker
18	Hubbardton	P-3	Ballfield
19	Aiken ¹	P-4	Picnic, Tenting, Caretaker
20	Norham	P-4	Picnic, Tenting, Skating, Caretaker
21	Coolidge ²	P-5	Picnic, Tenting, Lean-tos, Caretaker
22	Acatury ¹	Q-6	Picnic, Tenting, Hiking, Paved Road to Near Summit, Caretaker
23	Okemo	Q-5	Picnic, Skating, Auto Road to Near Summit under construction

No.	Forest or Park	Location	Facilities
24	Pocotoc Pict ¹	Q-5	Picnic, Tenting, Caretaker
25	Wilgus	Q-6	Picnic, Caretaker
26	Grafton	R-5	Picnic, Tenting, Caretaker
27	Jamaica	R-4	Underdeveloped, Picnic, Bathing
28	Townshend ¹	R-5	Picnic, Tenting, Skating, Caretaker
29	Dutton Pines	S-5	Picnic, Caretaker

GREEN MOUNTAIN NATIONAL FOREST

No.	Location	Facilities
30	Harpood Pond Q-4	Swimming, Camping, Picnic-ing, Nature Trail, Caretaker and Life Guards.
31	White Rocks Q-4	Picnicking, Nature Trail to Lookoff point, Interesting to Geologists and Botanist.
32	Texas Falls Q-4	Picnicking, Improved Nature Trail for "average" point for view of Falls and Gorge.
33	Greendale ¹ Q-4	Picnicking, Camping.
34	Bromley Min. R-4	Winter Sports Area, 11 miles of down mountain runs.

VERMONT OFFICIAL TOURIST INFORMATION BOOTHS, 1941

Location	Facilities
St. Johnsbury	
Barre	
Montpelier	
Wells River	
White River Junction	
Battleboro	

VISIT THE LONG TRAIL

From one end of Vermont to the other the Long Trail follows the sky-line of a two hundred mile mountain range, dipping into valleys, climbing over summits, passing through magnificent forests, sometimes skirting lakes. In all of the United States there is no foot-path like this. You Can Visit the Trail or one of the Beautiful Summits in a Single Day's Trip from Various Convenient Points.

On either side of the mountain range approach trails lead up to the Long Trail from nearby motor highways. In addition there are highways that cross the Trail itself.

HEALTH CONDITIONS IN VERMONT

All places offering lodging and meals must pass inspection by State Department of Public Health. Vermont is justly known as a healthy state, and for years has maintained its position as a leader in the control of communicable diseases. Typhoid fever is almost unknown in this state, a result which has been accomplished by close supervision of the State Department of Public Health over all public water supplies, sewage disposal and other possible means of infection. Boys and girls' camps are visited frequently by an experienced sanitary engineer, and camp owners make constant use of the facilities of the Department whenever sanitary or disease problems arise.

Besides the sanitary engineering division, the Department maintains active divisions of laboratory, communicable diseases, tuberculosis, infantile paralysis and public health nursing, all of which are at the service of tourists, campers and visitors, receiving attention either directly at the headquarters at Burlington, or through local health officers in the cities or towns.

SYNOPSIS OF MOTOR VEHICLE LAWS

Registration
Under the Vermont law a non-resident is exempt from registration of a pleasure car while in this state as a visitor, provided the state of his residence grants the same reciprocity to residents of Vermont. No permit or registration required of chartered busses.

Careless or Negligent Operators; Speed
The laws of Vermont provide that a motor vehicle shall not be operated on a public highway in a careless or negligent manner, nor in a manner to endanger the safety, life, or property of any person, and the speed limit for pleasure cars is fifty miles per hour, and for pleasure cars with trailer coaches or house trailers forty miles per hour.

Accidents; Duties of Operator
The operator of any motor vehicle involved in an accident must immediately stop and give his name, residence, license number and the name of the owner of the motor vehicle then under his control. The operator is further required to report the accident, within twenty-four hours, to the Commissioner of Motor Vehicles at Montpelier, Vt., if there are personal injuries or the damages exceed \$25.

Not Over Three Persons Allowed on Front Seat

A person must not operate a motor vehicle in Vermont, with more than three persons on the front seat, or in the front or driving compartment of a motor vehicle occupied by the operator of such vehicle.

GREEN MOUNTAIN HORSE ASSOCIATION BRIDLE PATHS

The dirt roads for these so-called "Bridle Paths" are the roads which run throughout the entire State, generally higher in the hills than the main motor roads. They are soft surfaced, shady, always beautiful and very seldom used by motor cars. At present there are over 1,000 miles of these roads marked, with stops arranged every ten to twenty miles for the riders' convenience for luncheon or over night.

One can generally count on the bridle paths being in good condition from May 1st to November 1st, and in some places for a longer season. The Association marks the routes with arrows, with the letters "G. Mt. H. A.," and issues a guide book giving the names of farm houses, inns and hotels where riders and horses will find comfortable quarters. Any one may become a member of the Association upon payment of the dues of \$2.00 a year. The guide book, maps and all necessary information as to condition of routes, expenses of a trip, rental of horses, lodgings, equipment, etc., will be supplied by the Green Mountain Horse Association, Rutland, Vermont.

The Publicity Service, Department of Conservation and Development, desires to be of help to all persons interested in Vermont and will gladly give information regarding hotels, boarding places, locations for summer homes, tours, recreational attractions and opportunities for hunting and fishing. The following publications will be furnished: "Vermont Hunting and Fishing"; "Vermont Tours"; Directory of Hotels, Tourist Homes and Cabins; "Vermont Farms and Summer Homes for Sale"; Cottages, Camps and Furnished Homes for Rent" with a list of boys' and girls' camps; folder, "Unspoiled Vermont." Special requests for information not contained in the foregoing are welcomed and will be answered as fully as possible. Address inquiries to Vermont Publicity Service, State House, Montpelier, Vermont.

GOLF COURSES IN VERMONT

Name	Location
Burlington Country Club	Burlington
Lake Morey Inn	Fairlee
Manchester Country Club	Manchester
Equinox Links Club	Manchester
Rutland Country Club	Rutland
Woodstock Country Club	Woodstock
Barre Country Club	Barre
Midway Golf Course	Barre
Vergennes Golf Club	Barre
Belleue Falls Country Club	Basin Harbor
Mc. Anthony Country Club	Belleue Falls
Bradford Golf Club	Bennington
Brandon Country Club	Brandon
Brattleboro Country Club	Brattleboro
New Warhank Golf Club	Brattleboro
Kingberry Golf Club	Derby
Dorset Field Club	Dorset
Hampton View Country Club	Fair Haven
Hardwick Country Club	Greenboro
Lamont Country Club	Hardwick
Lake Bomoseen Country Club	Hyde Park
The Lyndon Golf Club	Lake Bomoseen
Middlebury Country Club	Middlebury
Montpelier Country Club	Middlebury
National Life Course	Montpelier
Newport Country Club	Montpelier
Northfield Country Club	Newport
Orleans Country Club	Northfield
Proctor-Pittsford Country Club	Orleans
Lake St. Catherine Country Club	Poulinville
Monogue Golf Club	Rutland
Richford Country Club	Richford
Champlain Country Club	St. Albans
St. Johnsbury Country Club	St. Johnsbury
Hyde Manor Golf Club	St. Albans
Waterbury Inn Golf Course	Sudbury
Wells-Wood Golf Club	Waterbury
Williston Country Club	Wells River
Willington Country Club	Williston
Windsor Country Club	Windsor

FISH AND GAME

Fish—Open Seasons
Trout—Brook, Brown, Lake Lemon, Golden, Steelhead, Grayling, Black Spotted and Rainbow—May 1 to Aug. 15. Golden Trout, Lake Trout and Land-Locked Salmon—May 1 to Sept. 1. Pike Perch—May 1 to Mar. 15. Bass—July 1 to Dec. 1. Note: See General Laws for exceptions to the above applying to: Peckham Pond and Harvey's Lake in Caledonia County; Forest Lake, Big Averill Lake, Little Averill Lake and Back Pond in Essex County; Willoughby Lake, Lake Memphremong, Sempronie Lake, Echo Lake, Shadow Lake and Parker Pond in Orleans County; Chitenden Lake in Rutland County; and Lake Champlain.

Legal Lengths and Daily Limits
Trout—Brook, Brown, Lake Lemon, Golden, Steelhead (see exceptions on Barre and Willoughby Rivers), Rainbow, Grayling and Black Spotted—not less than 6 inches in length; not more than 20 fish, not more than 5 pounds. Lake Trout and Land-Locked Salmon—not less than 15 inches. Bass—not less than 10 inches, maximum of one per day. Pike Perch—7 fish (7 fish in Lake Champlain), pike-perch—not less than 12 inches in length—not more than 25 pounds. (For exceptions see General Laws.)

Game—Open Season
When Lawful to Take Same
Deer, one deer with horns not less than three inches long between November 1st and November 30th, both dates inclusive, excepting Sundays.
Rabbits or Hares..... Oct. 1-March 1
Gray Squirrels..... Oct. 1-March 1
Moose, Caribou and Elk, protected at all times. Continental Rabbits, not protected. (See General Laws for exception in Chittenden County on rabbits.)

Game Birds—Open Season
Ruffed Grouse (Partridge)—Oct. 1-Oct. 30. Woodcock and Ducks as regulated by the Bureau of Biological Survey. Pheasants—Wednesday and Saturday during month of October. 2 Goshawk Birds per day, 4 for season.
License Fees
Resident Fishing—\$1.25. Resident Hunting—\$1.25. Resident Combination Hunting and Fishing—\$2.00. Non-Resident Fishing—..... \$5.15
Season 2.55
3 Days 1.65
Non-Resident Hunting—\$12.50.
Non-Resident Combination Hunting and Fishing—\$15.50.
Resident Trapping—\$1.25. Non-Resident Trapping—\$30.00.

For all exceptions to the above General Laws, see Fish and Game Pamphlet, copy of which will be delivered by Town Clerk, or Game Warden, upon application with proper fee, by addressing Fish and Game Service, Montpelier, Vermont.

INDEX AND POPULATION

Note: The letters and figures after names in (E) denote the square on the map in which the town is located, as indicated by the color of the square. Black face figures indicate population of town. Face figures in italics indicate population of village only. Figures marked thus (†) are estimated for unincorporated villages. All others are based on 1930 census. Figures marked thus (†) are estimated for unincorporated villages. All others are based on this map unless there is a village or post office bearing that name.

Address	Population
Adams, M. 6	107
Adams, M. 7	107
Adams, M. 8	107
Adams, M. 9	107
Adams, M. 10	107
Adams, M. 11	107
Adams, M. 12	107
Adams, M. 13	107
Adams, M. 14	107
Adams, M. 15	107
Adams, M. 16	107
Adams, M. 17	107
Adams, M. 18	107
Adams, M. 19	107
Adams, M. 20	107
Adams, M. 21	107
Adams, M. 22	107
Adams, M. 23	107
Adams, M. 24	107
Adams, M. 25	107
Adams, M. 26	107
Adams, M. 27	107
Adams, M. 28	107
Adams, M. 29	107
Adams, M. 30	107
Adams, M. 31	107
Adams, M. 32	107
Adams, M. 33	107
Adams, M. 34	107
Adams, M. 35	107
Adams, M. 36	107
Adams, M. 37	107
Adams, M. 38	107
Adams, M. 39	107
Adams, M. 40	107
Adams, M. 41	107
Adams, M. 42	107
Adams, M. 43	107
Adams, M. 44	107
Adams, M. 45	107
Adams, M. 46	107
Adams, M. 47	107
Adams, M. 48	107
Adams, M. 49	107
Adams, M. 50	107
Adams, M. 51	107
Adams, M. 52	107
Adams, M. 53	107
Adams, M. 54	107
Adams, M. 55	107
Adams, M. 56	107
Adams, M. 57	107
Adams, M. 58	107
Adams, M. 59	107
Adams, M. 60	107
Adams, M. 61	107
Adams, M. 62	107
Adams, M. 63	107
Adams, M. 64	107
Adams, M. 65	107
Adams, M. 66	107
Adams, M. 67	107
Adams, M. 68	107
Adams, M. 69	107
Adams, M. 70	107
Adams, M. 71	107
Adams, M. 72	107
Adams, M. 73	107
Adams, M. 74	107
Adams, M. 75	107
Adams, M. 76	107
Adams, M. 77	107
Adams, M. 78	107
Adams, M. 79	107
Adams, M. 80	107
Adams, M. 81	107
Adams, M. 82	107
Adams, M. 83	107
Adams, M. 84	107
Adams, M. 85	107
Adams, M. 86	107
Adams, M. 87	107
Adams, M. 88	107
Adams, M. 89	107
Adams, M. 90	107
Adams, M. 91	107
Adams, M. 92	107
Adams, M. 93	107
Adams, M. 94	107
Adams, M. 95	107
Adams, M. 96	107
Adams, M. 97	107
Adams, M. 98	107
Adams, M. 99	107
Adams, M. 100	107



1941-42
Copyright © 1941 by the State of Vermont
Printed by the State of Vermont
Montpelier, Vermont