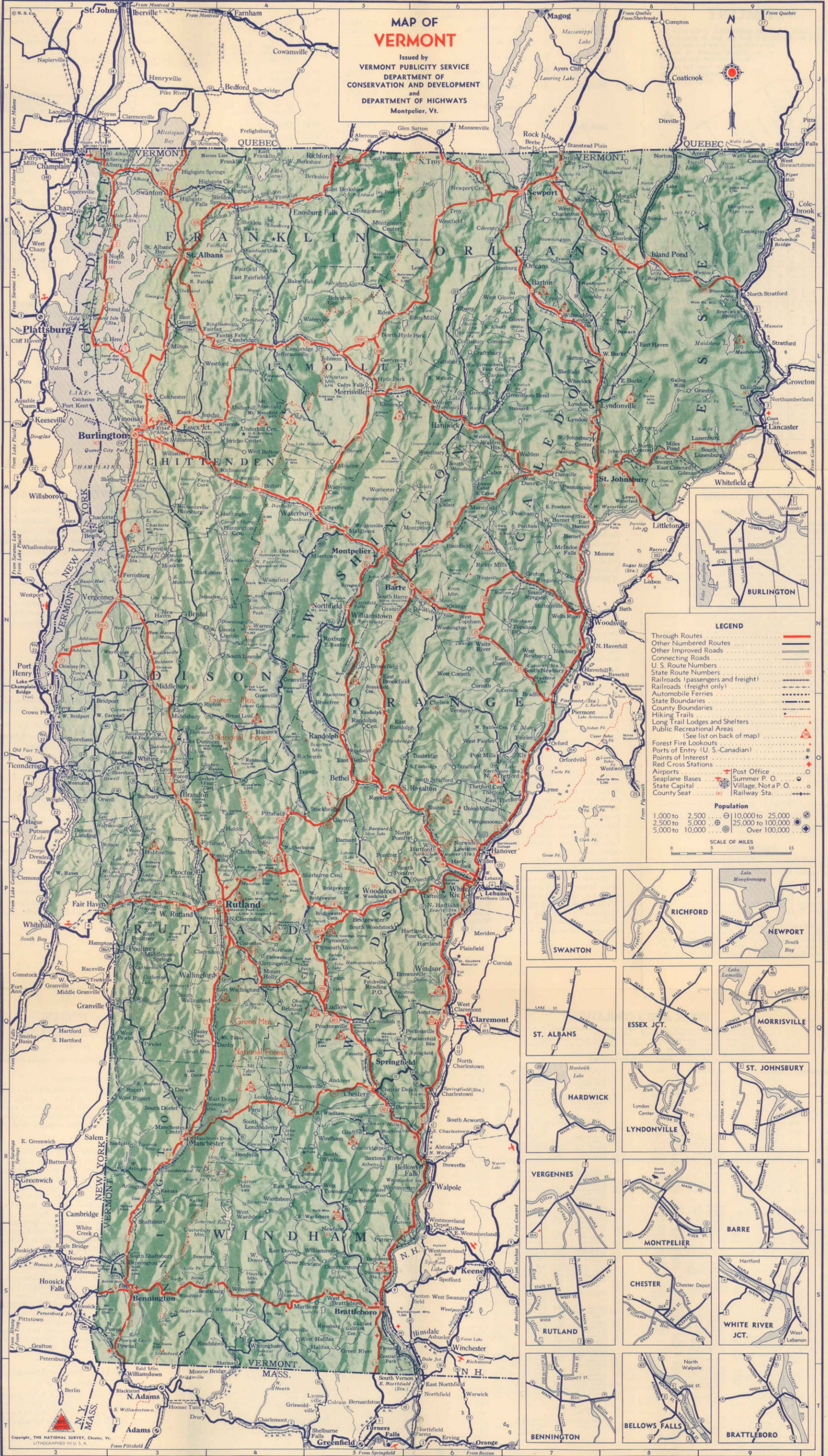


MAP OF VERMONT

Issued by
VERMONT PUBLICITY SERVICE
DEPARTMENT OF
CONSERVATION AND DEVELOPMENT
and
DEPARTMENT OF HIGHWAYS
Montpelier, Vt.



LEGEND

- Through Routes —
- Other Numbered Routes - - -
- Other Improved Roads —
- Connecting Roads - - -
- U. S. Route Numbers
- State Route Numbers
- Railroads (passengers and freight) —
- Railroads (freight only) - - -
- Automobile Ferries - - -
- State Boundaries - - -
- County Boundaries - - -
- Hiking Trails - - -
- Long Trail Lodges and Shelters - - -
- Public Recreational Areas - - -
- Forest Fire Lookouts ▲
- Ports of Entry (U. S.-Canadian) ▲
- Points of Interest ★
- Red Cross Stations ★
- Airports ✈
- Seaplane Bases ✈
- State Capital ○
- County Seat ○
- Post Office ○
- Summer P. O. ○
- Village, Not a P. O. ○
- Railway Sta. +

Population

- 10,000 to 25,000 ○
- 25,000 to 50,000 ○
- 50,000 to 100,000 ○
- Over 100,000 ○

SCALE OF MILES

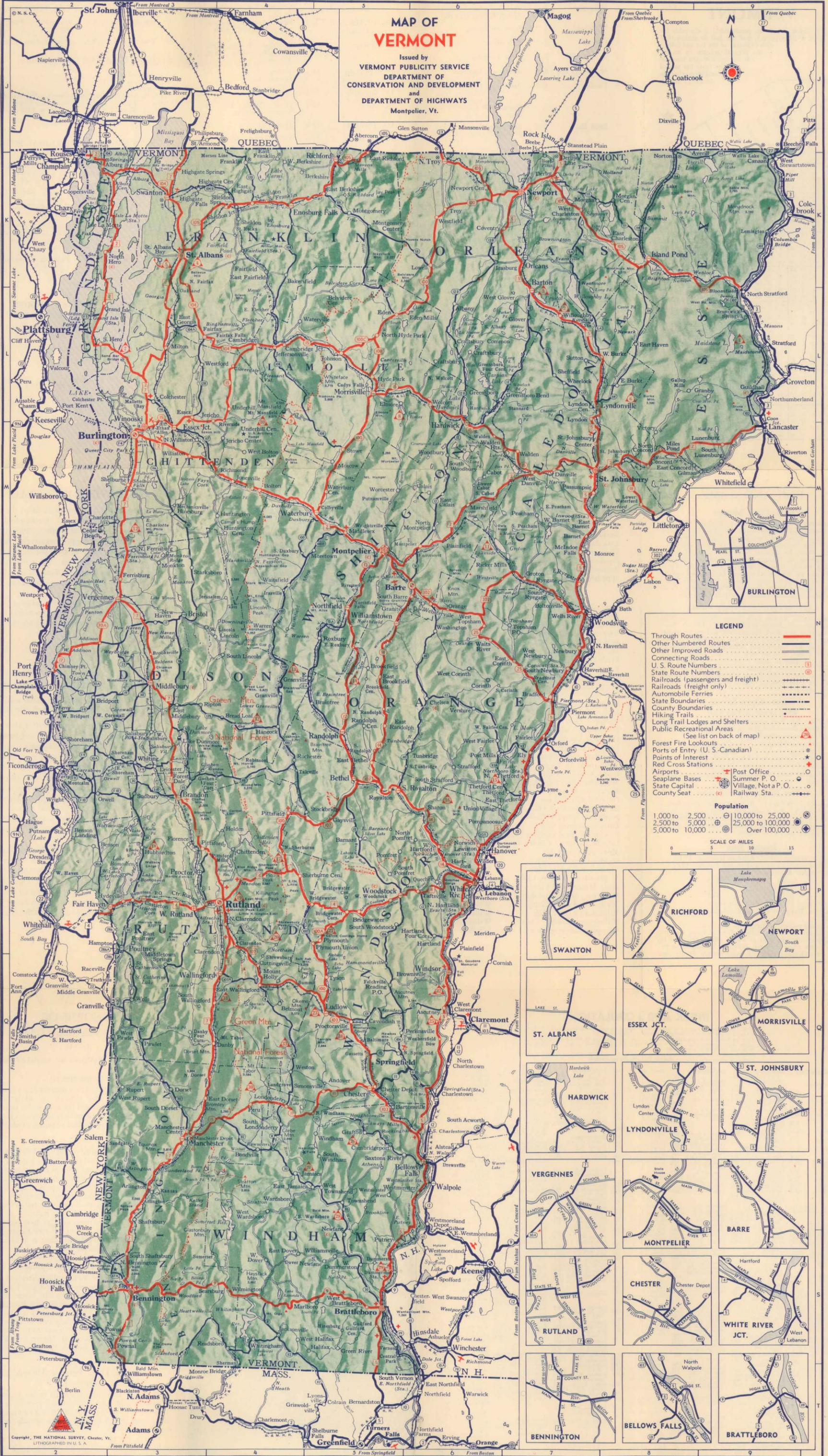
0 5 10 15

 SWANTON	 RICHFORD	 NEWPORT
 ST. ALBANS	 ESSEX JCT.	 MORRISVILLE
 HARDWICK	 LYNDONVILLE	 ST. JOHNSBURY
 VERGENNES	 MONTPELIER	 BARE
 RUTLAND	 CHESTER	 WHITE RIVER JCT.
 BENNINGTON	 BELLOWS FALLS	 BRATTLEBORO

Copyright, THE NATIONAL SURVEY, Chester, Vt.
LITHOGRAPHED IN U. S. A.

MAP OF VERMONT

Issued by
VERMONT PUBLICITY SERVICE
DEPARTMENT OF
CONSERVATION AND DEVELOPMENT
and
DEPARTMENT OF HIGHWAYS
Montpelier, Vt.



LEGEND

- Through Routes —
- Other Numbered Routes ---
- Other Improved Roads ---
- Connecting Roads ---
- U. S. Route Numbers
- State Route Numbers
- Railroads (passengers and freight)
- Railroads (freight only)
- Automobile Ferries
- State Boundaries
- County Boundaries
- Hiking Trails
- Long Trail Lodges and Shelters ▲
- Public Recreational Areas ▲
- Forest Fire Lookouts ▲
- Ports of Entry (U. S.-Canadian) ▲
- Points of Interest ★
- Red Cross Stations ★
- Airports ✈
- Seaplane Bases ✈
- State Capital ★
- County Seat ★
- Post Office ○
- Summer P. O. ○
- Village, Not a P. O. ○
- Railway Sta. +

Population

- 10,000 to 25,000 ○
- 25,000 to 50,000 ○
- 50,000 to 100,000 ○
- Over 100,000 ○

SCALE OF MILES

0 5 10 15

 SWANTON	 RICHFORD	 NEWPORT
 ST. ALBANS	 ESSEX JCT.	 MORRISVILLE
 HARDWICK	 LYNDONVILLE	 ST. JOHNSBURY
 VERGENNES	 MONTPELIER	 BARRE
 RUTLAND	 CHESTER	 WHITE RIVER JCT.
 BENNINGTON	 BELLOWS FALLS	 BRATTLEBORO

Copyright, THE NATIONAL SURVEY, Chester, Vt.
LITHOGRAPHED IN U. S. A.

