

Map of NEW HAMPSHIRE and VERMONT

Issued jointly by the
NEW HAMPSHIRE STATE
DEVELOPMENT COMMISSION
and
DEPARTMENT OF HIGHWAYS
CONCORD, N. H.
and the
BUREAU OF PUBLICITY
and
DEPARTMENT OF HIGHWAYS
MONTPELIER, VT.

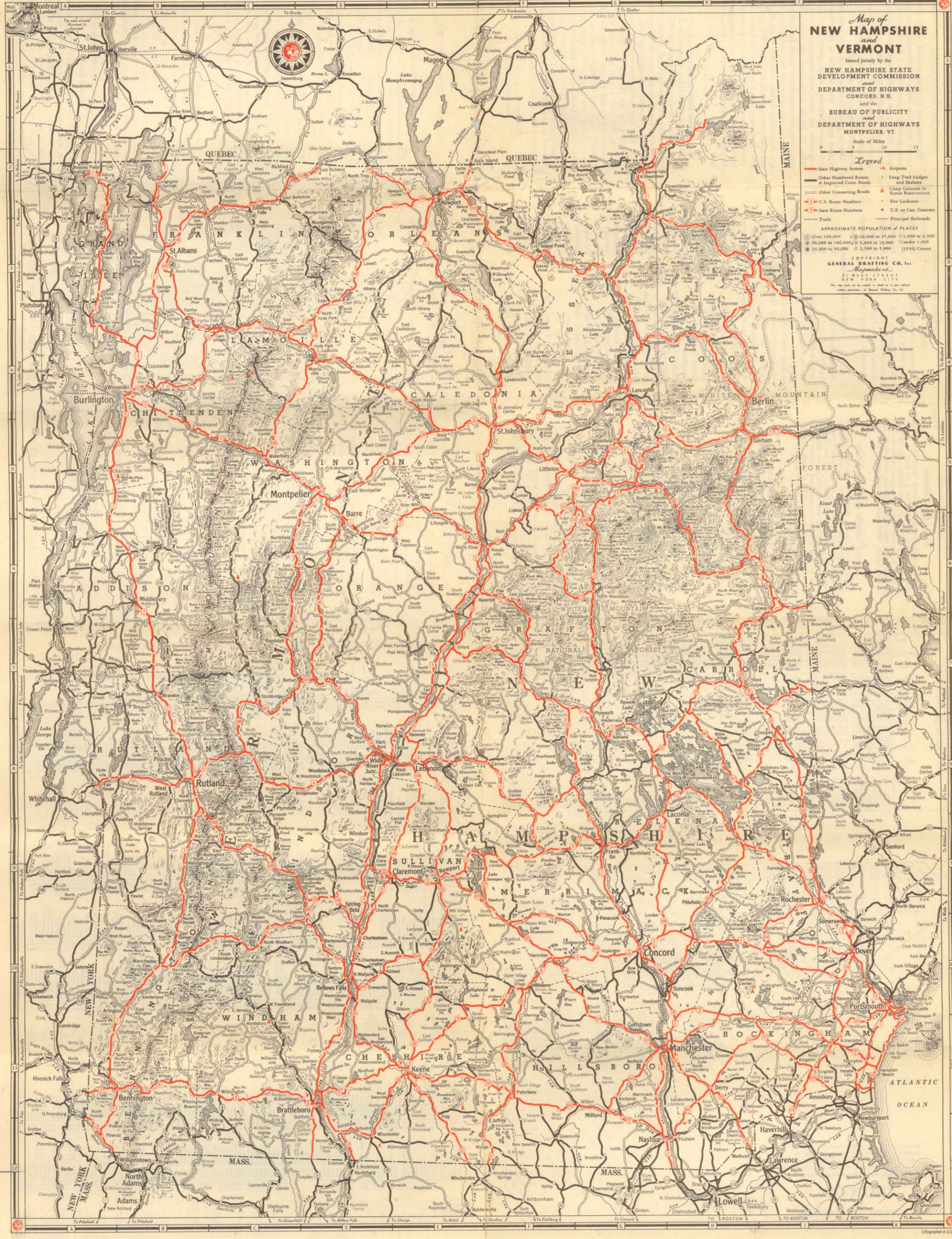
Scale of Miles
0 5 10 15

Legend

- State Highway System
- Other Numbered Routes & Improved Const. Roads
- Other Connecting Roads
- U.S. Route Numbers
- State Route Numbers
- Trails
- Airports
- Long Trail Lodges and Shelters
- Camp Grounds in Forest Reservations
- Fire Lookouts
- U.S. or Can. Customs
- Principal Railroads

APPROXIMATE POPULATION of PLACES
Over 100,000 10,000 to 25,000 1,000 to 2,500
50,000 to 100,000 5,000 to 10,000 Under 1,000
25,000 to 50,000 2,500 to 5,000 (1950) Census

COPYRIGHT
GENERAL DRAFTING CO., Inc.
Mapmakers
21 WEST STREET
NEW YORK CITY



Map of NEW HAMPSHIRE and VERMONT

Issued jointly by the
NEW HAMPSHIRE STATE
DEVELOPMENT COMMISSION
and
DEPARTMENT OF HIGHWAYS
CONCORD, N.H.
and the
BUREAU OF PUBLICITY
and
DEPARTMENT OF HIGHWAYS
MONTPELIER, VT.

Scale of Miles
0 5 10 15

Legend

- State Highway System
- Other Numbered Routes & Improved Conn. Roads
- Other Connecting Roads
- U.S. Route Numbers
- State Route Numbers
- Trails
- Airports
- Long Trail Lodges and Shelters
- Camp Grounds in Forest Reservations
- Fire Lookouts
- U.S. or Can. Customs
- Principal Railroads

APPROXIMATE POPULATION of PLACES
Over 100,000 10,000 to 25,000 1,000 to 2,500
50,000 to 100,000 5,000 to 10,000 Under 1,000
25,000 to 50,000 2,500 to 5,000 (1950) Census

COPYRIGHT
GENERAL DRAFTING CO., Inc.
Mapmakers
21 WEST STREET
NEW YORK CITY
This map was prepared in whole or in part without
the assistance of General Drafting Co., Inc.

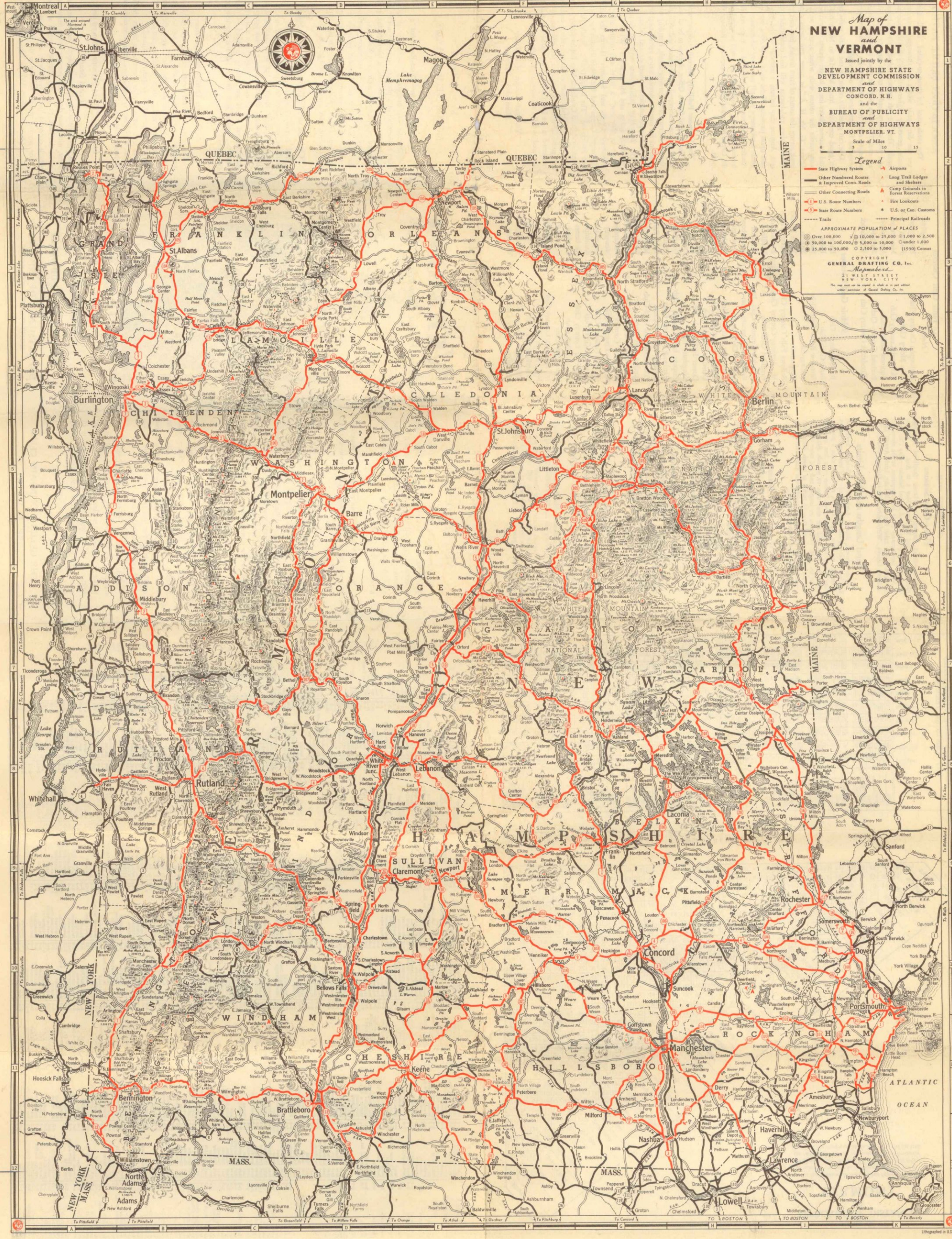


TABLE OF APPROXIMATE DISTANCES IN VERMONT

To find distance between points listed in this table (as from Bellows Falls to St. Albans), find the first in alphabetical order (Bellows Falls) in the list and follow the vertical column to an intersection with the horizontal line from the second point (St. Albans) in the list (146 miles).

Albany	88	91	96	100	104	108	112	116	120	124	128	132	136	140	144	148	152	156	160	164	168	172	176	180	184	188	192	196	200	204	208	212	216	220	224	228	232	236	240	244	248	252	256	260	264	268	272	276	280	284	288	292	296	300	304	308	312	316	320	324	328	332	336	340	344	348	352	356	360	364	368	372	376	380	384	388	392	396	400	404	408	412	416	420	424	428	432	436	440	444	448	452	456	460	464	468	472	476	480	484	488	492	496	500	504	508	512	516	520	524	528	532	536	540	544	548	552	556	560	564	568	572	576	580	584	588	592	596	600	604	608	612	616	620	624	628	632	636	640	644	648	652	656	660	664	668	672	676	680	684	688	692	696	700	704	708	712	716	720	724	728	732	736	740	744	748	752	756	760	764	768	772	776	780	784	788	792	796	800	804	808	812	816	820	824	828	832	836	840	844	848	852	856	860	864	868	872	876	880	884	888	892	896	900	904	908	912	916	920	924	928	932	936	940	944	948	952	956	960	964	968	972	976	980	984	988	992	996	1000
--------	----	----	----	-----	-----	-----	-----	-----	-----	-----	-----	-----	-----	-----	-----	-----	-----	-----	-----	-----	-----	-----	-----	-----	-----	-----	-----	-----	-----	-----	-----	-----	-----	-----	-----	-----	-----	-----	-----	-----	-----	-----	-----	-----	-----	-----	-----	-----	-----	-----	-----	-----	-----	-----	-----	-----	-----	-----	-----	-----	-----	-----	-----	-----	-----	-----	-----	-----	-----	-----	-----	-----	-----	-----	-----	-----	-----	-----	-----	-----	-----	-----	-----	-----	-----	-----	-----	-----	-----	-----	-----	-----	-----	-----	-----	-----	-----	-----	-----	-----	-----	-----	-----	-----	-----	-----	-----	-----	-----	-----	-----	-----	-----	-----	-----	-----	-----	-----	-----	-----	-----	-----	-----	-----	-----	-----	-----	-----	-----	-----	-----	-----	-----	-----	-----	-----	-----	-----	-----	-----	-----	-----	-----	-----	-----	-----	-----	-----	-----	-----	-----	-----	-----	-----	-----	-----	-----	-----	-----	-----	-----	-----	-----	-----	-----	-----	-----	-----	-----	-----	-----	-----	-----	-----	-----	-----	-----	-----	-----	-----	-----	-----	-----	-----	-----	-----	-----	-----	-----	-----	-----	-----	-----	-----	-----	-----	-----	-----	-----	-----	-----	-----	-----	-----	-----	-----	-----	-----	-----	-----	-----	-----	-----	-----	-----	-----	-----	-----	-----	-----	-----	-----	-----	-----	-----	-----	-----	-----	------

INDEX	VERMONT	Cities & Towns	NEW HAMPSHIRE
Adison	B-6	Adison	Adison
Bennington	B-11	Bennington	Bennington
Caledonia	B-4	Caledonia	Caledonia
Chittenden	B-11	Chittenden	Chittenden
Essex	G-3	Essex	Essex
Franklin	B-3	Franklin	Franklin
Grand Isle	A-3	Grand Isle	Grand Isle
Lamoille	C-4	Lamoille	Lamoille
Orange	D-6	Orange	Orange
Orleans	B-3	Orleans	Orleans
Rutland	B-8	Rutland	Rutland
Washington	D-8	Washington	Washington
Windham	D-8	Windham	Windham
Windsor	D-8	Windsor	Windsor

DISTANCES FROM OTHER CITIES TO POINTS IN VERMONT

City	Albany	Bennington	Brattleboro	Burlington	Castleton	Colchester	Danville	Derby	Essex	Franklin	Grand Isle	Lamoille	Orange	Orleans	Rutland	St. Albans	St. Johnsbury	Windsor
Albany	0	114	120	126	132	138	144	150	156	162	168	174	180	186	192	198	204	210
Bennington	114	0	106	112	118	124	130	136	142	148	154	160	166	172	178	184	190	196
Brattleboro	120	106	0	6	12	18	24	30	36	42	48	54	60	66	72	78	84	90
Burlington	126	112	6	0	6	12	18	24	30	36	42	48	54	60	66	72	78	84
Castleton	132	118	12	6	0	6	12	18	24	30	36	42	48	54	60	66	72	78
Colchester	138	124	18	12	6	0	6	12	18	24	30	36	42	48	54	60	66	72
Danville	144	130	24	18	12	6	0	6	12	18	24	30	36	42	48	54	60	66
Derby	150	136	30	24	18	12	6	0	6	12	18	24	30	36	42	48	54	60
Essex	156	142	36	30	24	18	12	6	0	6	12	18	24	30	36	42	48	54
Franklin	162	148	42	36	30	24	18	12	6	0	6	12	18	24	30	36	42	48
Grand Isle	168	154	48	42	36	30	24	18	12	6	0	6	12	18	24	30	36	42
Lamoille	174	160	54	48	42	36	30	24	18	12	6	0	6	12	18	24	30	36
Orange	180	166	60	54	48	42	36	30	24	18	12	6	0	6	12	18	24	30
Orleans	186	172	66	60	54	48	42	36	30	24	18	12	6	0	6	12	18	24
Rutland	192	178	72	66	60	54	48	42	36	30	24	18	12	6	0	6	12	18
St. Albans	198	184	78	72	66	60	54	48	42	36	30	24	18	12	6	0	6	12
St. Johnsbury	204	190	84	78	72	66	60	54	48	42	36	30	24	18	12	6	0	6
Windsor	210	196	90	84	78	72	66	60	54	48	42	36	30	24	18	12	6	0

FISH AND GAME (IN EFFECT 1932)

Fish—Open Seasons

Trout—Brook, Brown, Lock Leven, Steelhead, Grayling, Black Spotted and Rainbow—May 1 to Aug. 15. Golden Trout, Lake Trout and Land-Locked Salmon—May 1 to Sept. 1. Note: See General Laws for exceptions to the above applying to Forest Lake, Big Averill Lake, Little Averill Lake in Essex County, Willoughby Lake in Orleans County.

Legal Lengths and Daily Limits

Trout—Brook, Brown, Lock Leven, Golden, Steelhead, Rainbow, Grayling and Black Spotted—not less than 6 inches in length; not more than 25 fish, not more than 5 pounds. Lake Trout and Land-Locked Salmon—not less than 15 inches in length, and not more than 10 pounds. Black Bass—not less than 10 inches in length, and not more than 10 fish. Pickerel—not less than 12 inches in length. Pike Perch—not less than 10 inches in length—not more than 25 lbs. (For exceptions see General Laws).

Game—Open Season

When Lawful to Take Same

Deer, one deer with horns not less than three inches long, between November 21st and November 30th, both dates inclusive excepting Sunday. Exception: Deer protected at all times in Franklin County.

Rabbits or Hares.....Oct. 1-March 1
Gray Squirrels.....Oct. 1-Nov. 1
Moose, Caribou and Elk, protected at all times.
Cottontail Rabbits, not protected.

Game Birds—Open Season

Quail—Sept. 15-Dec. 1. Ruffed Grouse (Partridge) and Woodcock—Oct. 1-Nov. 1. Exception: See General Laws in regard to Jose Pond, Danville, Stone Pond, Shadow Lake in Glover, Caspian Lake in Greensboro, Grotton Pond or Lund's Pond in the town of Groton. Ducks as regulated by the Bureau of Biological Survey.

License Fees

Resident Fishing—\$1.00. Resident Hunting—\$1.00.
Resident Combination Fishing and Hunting—\$1.50.

Non-resident Fishing—\$3.15. Refer to reciprocal clause, Sec. 6337.

Non-resident Combination Hunting and Fishing—\$10.50.
Resident Trapping—\$1.00. Non-resident Trapping—\$5.00.

For all exceptions to the above General Laws, see Fish and Game Pamphlet, copy of which will be delivered by Town Clerk when license is obtained, or sent upon request by addressing Department of Fish and Game, Montpelier, Vermont.

GOLF COURSES IN VERMONT

18 Hole Golf Courses		
Name	Location	
Burlington Country Club	Burlington	
Lake Morey Club	Fairlee	
Ekwanok Country Club	Manchester	
Equinox Links Club	Manchester	
Rutland Country Club	Rutland	
Woodstock Country Club	Woodstock	

9 Hole Golf Courses

Barre Country Club	Barre
Barre Golf Club	Barre
Meadow Brook Golf Club	Barre
Keewaydin	Barton
Vergennes	Basin Harbor
Bellows Falls Country Club	Bellows Falls
Mt. Anthony Country Club	Bennington
Bradford Golf Club	Bradford
Brandon Country Club, Inc.	Brandon
Brattleboro Country Club	Brattleboro
Country Club Estate	Burlington
Bomoseen Country Club	Castleton
Craftsbury Country Club	Craftsbury
Danville Country Club	Danville
Dorset Field Club, Inc.	Dorset
Kingsbury Farm	Derby
Caspian Lake Country Club	Greensboro
Hardwick Country Club	Hardwick
Lamoille Country Club	Hyde Park
Lake Champlain Golf Club	Lyndonville
Lyndon Golf Club	Mallett's Bay
Middlebury Country Club	Middlebury
Montpelier Country Club	Montpelier
Newport Country Club	Newport
Orleans Country Club	Orleans
Montague Golf Club	Randolph
Rochester Country Club	Rochester
Richford Golf Club	Richford
Champlain Club	St. Albans
St. Johnsbury Country Club	St. Johnsbury
Hyde Manor Golf Club	Sudbury
Waterbury Inn Club	Waterbury
Wilmington Country Club	Wilmington
Hourglass Country Club	Windsor

GREEN MOUNTAIN HORSE ASSOCIATION BRIDLE PATHS

The roads used for these so-called "Bridle Paths" are the dirt roads which run throughout the entire State, generally higher in the hills than the main motor roads. They are soft surfaced, shady, always beautiful and very seldom used by motor cars. At present there are over 700 miles of these roads marked, with stops arranged every ten to twenty miles for the riders' convenience for luncheon or over night.

One can generally count on the bridle paths being in good condition from May 1st to November 1st, and in some places for a longer season. The Association marks the routes with white arrows, with the letters "G. Mt. H. A." in green, and issues a guide book giving the names of farm houses, inns and hotels where riders and horses will find comfortable quarters. Anyone may become a member of the Association upon payment of the dues of \$1.00 a year. The guide book, maps and all necessary information as to condition of routes, expenses of a trip, rental of horses, lodgings, equipment, etc., will be supplied by the Green Mountain Horse Association, Rutland, Vermont.

The Vermont Publicity Bureau, a department in the Secretary of State's Office, desires to be of service to all persons interested in Vermont and will gladly furnish information regarding hotels, boarding places, locations for summer homes, tours, recreational attractions and opportunities for hunting and fishing.

The following publications will be furnished: "Vermont Lakes and Mountains"; "Where to Stop When in Vermont," a hotel and resort directory; "Vermont Farms and Summer Homes for Sale"; "Cottages, Camps and Furnished Homes for Rent"; also folders on "The Long Trail"; "Bridle Paths in Vermont"; Road Condition Map Folder (during summer months); and copies of motor vehicle and fish and game laws. Special requests for information not contained in the foregoing are welcomed and will be answered as fully as possible. Address inquiries to

Vermont Bureau of Publicity
Montpelier, Vermont

VISIT THE LONG TRAIL

From one end of Vermont to the other the Long Trail follows the sky-line of a two hundred mile mountain range, dipping into valleys, climbing over summits, passing through magnificent forests, sometimes skirting lakes. In all of the United States there is no foot-path like this.

You Can Visit the Trail or one of the Beautiful Summits in a Single Day's Trip from Various Convenient Points.

On either side of the mountain range approach trails leads up to the Long Trail from nearby motor highways. In addition there are highways that cross the Trail itself. One of the through roads, that which climbs through Sherburne Pass, crosses the Trail directly in front of the beautiful tramping center maintained by the Green Mountain Club and known as

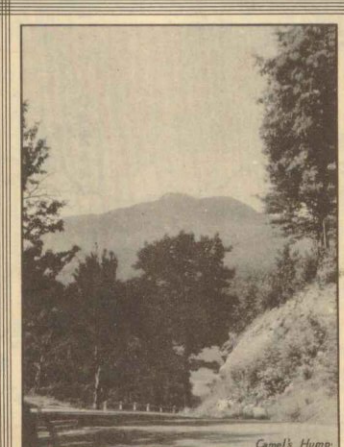
LONG TRAIL LODGE

From the Lodge short walks lead to nearby points of beauty and interest, while longer circuits make splendid mountain summits accessible. Along the whole length of the Long Trail shelters are available every few miles for the trumper who enjoys an extended visit in the wilderness.

Trails, shelters and Lodge are maintained for the trumper and the lover of the woods and summits. A pocket guide-book describes the trails and gives information as to shelters, distances, and means of access. The guide-book will be sent on receipt of fifty cents. Address

THE GREEN MOUNTAIN CLUB
Rutland, Vermont.

VERMONT The Green Mountain State



1932 MAP
Distributed by
BUREAU OF PUBLICITY and the DEPARTMENT OF HIGHWAYS
MONTPELIER, VERMONT

SYNOPSIS OF MOTOR VEHICLE LAWS 1932

Registration—Non-Resident

Under the Vermont law a non-resident is exempt from registration of a pleasure car while in this state as a visitor, provided the state of his residence grants the same reciprocity to residents of Vermont.

If under the agreement of reciprocity, a non-resident desires to operate in this state for a longer period than the agreement permits, he may secure registration for a four months' period dating from his arrival in the state for a fee equal to one half the resident fee.

Careless or Negligent Operators; Speed

The laws of Vermont provide that a motor vehicle shall not be operated on a public highway in a careless or negligent manner, nor in a manner to endanger the safety, life, or property of any person.

Cities and incorporated villages have authority to make special regulations relative to speed of motor vehicles provided such limit is fixed at not less than twenty miles per hour.

Accidents; Duties of Operator

The operator of any motor vehicle involved in an accident must immediately stop and give his name, residence, license number and the name of the owner of the motor vehicle then under his control, to the party whose person or property is injured.

The operator is further required to report the accident, within twenty-four hours, to the Commissioner of Motor Vehicles at Montpelier, Vt.

Not Over Three Persons Allowed on Front Seat

A person must not operate a motor vehicle in Vermont, with more than three persons on the front seat, or in the front or driving compartment of a motor vehicle occupied by the operator of such vehicle.

For any information relative to the motor vehicle laws, address the Motor Vehicle Department, Montpelier, Vermont.