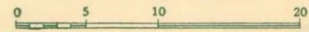


A Map of NEW HAMPSHIRE and VERMONT

Issued jointly by the
NEW HAMPSHIRE
BOARD OF PUBLICITY
CONCORD, N. H.

—And the—
VERMONT STATE PUBLICITY BUREAU
MONTEPELIER, VT.

SCALE OF MILES



EXPLANATION

- Improved Main Highways.....
- Connecting Roads.....
- U. S. Highway Route Numbers.....
- State Route Numbers.....
- Airports—Landing Fields
With Service and Hanger.....
- With Service except in winter.....
- With Emergency Service.....
- Railroads.....
- County Lines.....
- State Lines.....
- Long Trail Lodges and Shelters.....



ATLANTIC
OCEAN

Made and Copyrighted by
THE NATIONAL SURVEY CO.
Chester, Vermont



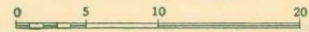
Boston

A Map of NEW HAMPSHIRE and VERMONT

Issued jointly by the
NEW HAMPSHIRE
BOARD OF PUBLICITY
CONCORD, N. H.

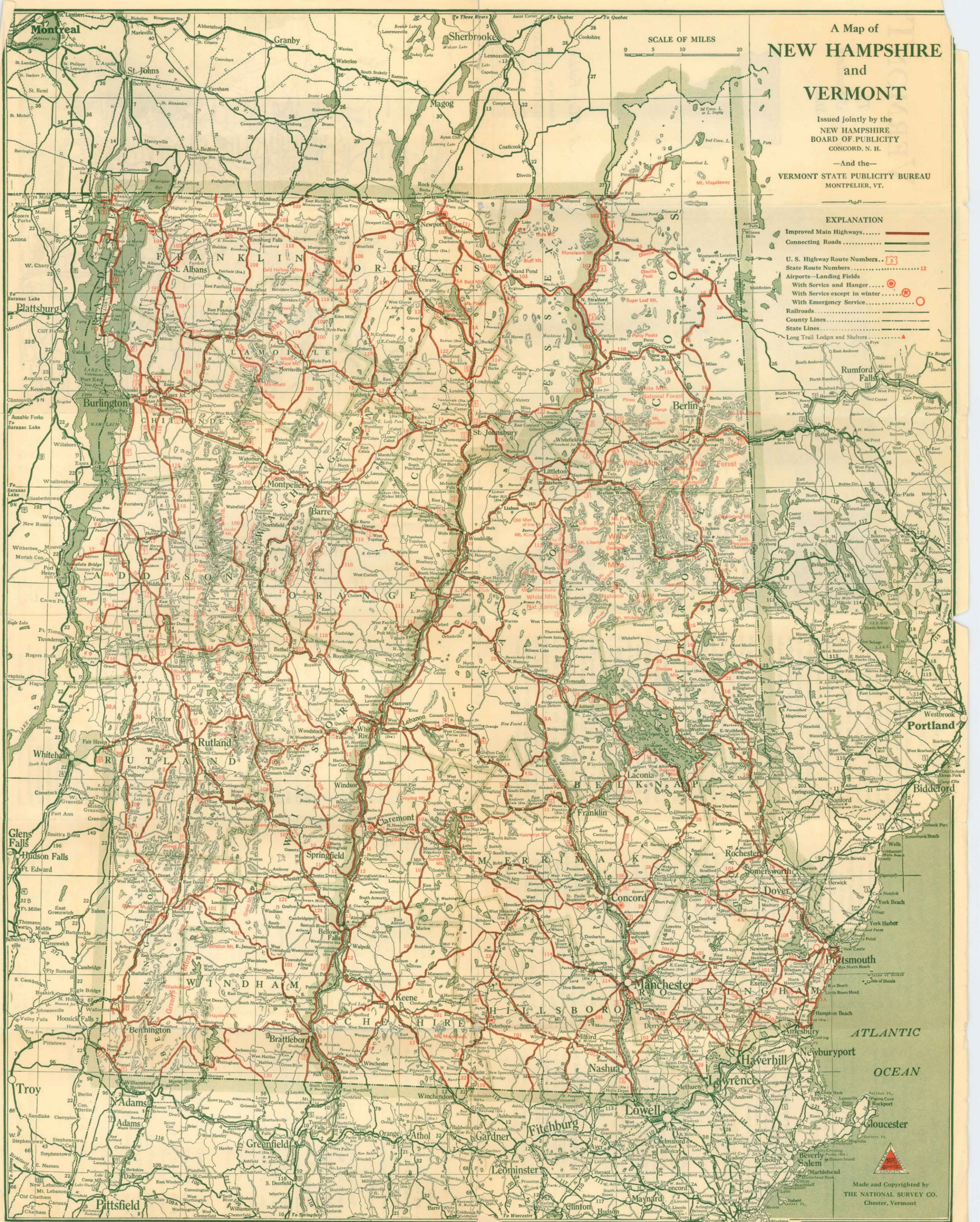
—And the—
VERMONT STATE PUBLICITY BUREAU
MONTEPELIER, VT.

SCALE OF MILES



EXPLANATION

- Improved Main Highways.....
- Connecting Roads.....
- U. S. Highway Route Numbers.....
- State Route Numbers.....
- Airports—Landing Fields
With Service and Hanger.....
- With Service except in winter.....
- With Emergency Service.....
- Railroads.....
- County Lines.....
- State Lines.....
- Long Trail Lodges and Shelters.....



ATLANTIC
OCEAN

Made and Copyrighted by
THE NATIONAL SURVEY CO.
Chester, Vermont



Boston

**SYNOPSIS OF
MOTOR VEHICLE LAWS**

Registration—Non-Resident

Under the Vermont law a non-resident is exempt from registration while in this state as a visitor, provided the state of his residence grants the same reciprocity to residents of Vermont.

If under the agreement of reciprocity, a non-resident desires to operate in this state for a longer period than the agreement permits, he may secure registration for a four months' period dating from his arrival in the state for a fee equal to one half the resident fee.

Careless or Negligent Operators; Speed

The laws of Vermont provide that a motor vehicle shall not be operated on a public highway in a careless or negligent manner, nor in a manner to endanger the safety, life, or property of any person.

Cities and incorporated villages have authority to make special regulations relative to speed of motor vehicles provided such limit is fixed at not less than twenty miles per hour.

Accidents; Duties of Operator

The operator of any motor vehicle involved in an accident must immediately stop and give his name, residence, license number and the name of the owner of the motor vehicle then under his control, to the party whose person or property is injured.

The operator is further required to report the accident, within twenty-four hours, to the Commissioner of Motor Vehicles at Montpelier, Vt.

Not Over Three Persons Allowed on Front Seat

A person must not operate a motor vehicle in Vermont, with more than three persons on the front seat, or in the front or driving compartment of a motor vehicle occupied by the operator of such vehicle.

For any information relative to the motor vehicle laws, address the Motor Vehicle Department, Montpelier, Vermont.

SUMMER CAMPS IN VERMONT

Boys' Camps

- Abnaki, North Hero
- Arrowhead, Poulney
- Billings, Thetford
- Brook Farm, East Dummerston
- Cheemauna, Sharon
- Dingley Dell, South Hero
- Duncan, Derby
- Duncan, Peru
- Eagle Mountain, Milton
- Enajerog, Wilmington
- Gaysville, Gaysville
- Green Mountain, Hubbardston
- Iroquois, Colchester
- Kaaterskill, Pownal
- Kadimah, Milton
- Kahagan, Woodbury
- Kawawin, Wallingford
- Keewaydin, Salisbury
- Kill Kare, St. Albans
- Kill Kare, Tutoring
- Kokosing, Strafford
- Lanakila, Fairlee
- Maquam, Swanton
- Neperan, Newport
- Owl, Peacham
- Passumpsic, West Fairlee
- Plymouth, Plymouth
- St. Ann's, Isle La Motte
- Sangamon, Pittsford
- Shelter, Marlboro
- Shenewis, Barton
- Tawasi, Sherburne
- Twin Lakes, Hubbardton
- Waubanake, Brandon
- Wayesses, Morgan
- Winape, East Charleston
- Winnewauka, Lunenburg
- Zelenko, Salisbury

Girls' Camps

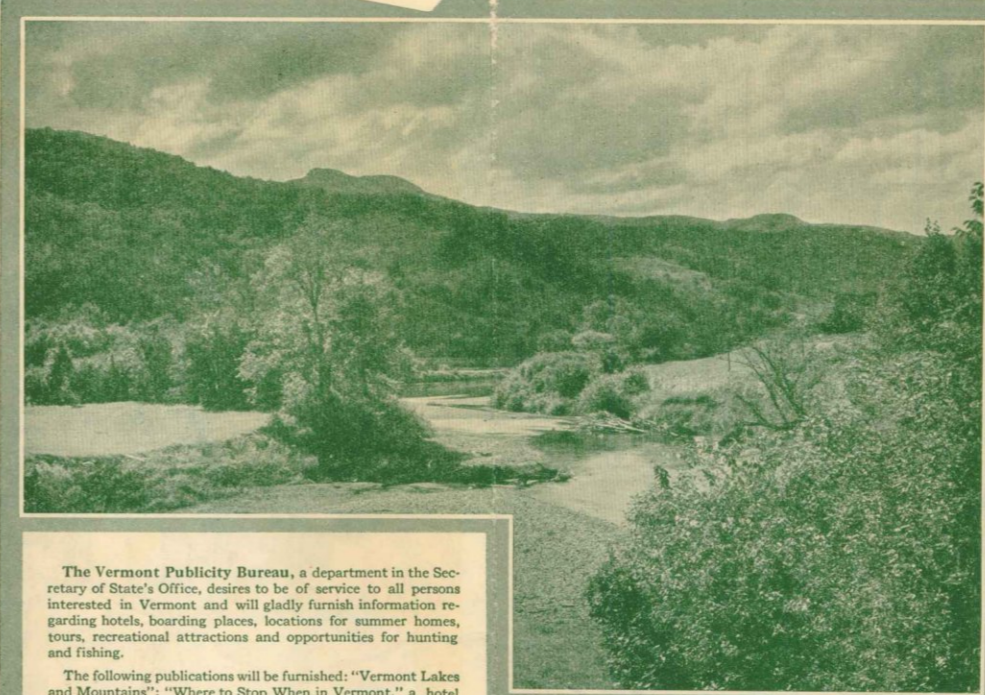
- Aloha, Fairlee
- Aloha Hive, West Fairlee
- Arden, Dummerston
- Aurora, Colchester
- Awance, Hubbardton
- Barnard, Colchester
- Beenadeewin Wigwam, South Fairlee
- Billings, Thetford
- Brown Ledge, Colchester
- Carmelia, Milton
- Dunmore, Salisbury
- Ecole Champlain, Ferrisburgh
- Farwell, Newbury
- Gaysville, Gaysville
- Green Mountain, Arlington
- Green Mountain, Hubbardton
- Green Mountain, West Dummerston
- Hanoum Hill, Thetford
- Hanoum Lake, Thetford
- Hochelago, South Hero
- Ken Jockette, South Strafford
- Killooleet, Hancock
- Kiniya, Colchester
- Kinni-Kinnio, Poulney
- Locheam, Thetford
- Marbury, Ferrisburgh
- Naidni, Salisbury
- Neshobe, Thetford
- Quinibeck, Fairlee
- Songadeewin, Westmore
- Sunrise, Benson
- Teela Wooket, Roxbury
- Vermont Camp for Crippled Children, Goshen
- Waubanake, Brandon
- Wilakowi, Northfield
- Wynona, Fairlee
- Wyoda, Ely
- Ziptekana, Colchester

**GREEN MOUNTAIN HORSE
ASSOCIATION BRIDLE PATHS**

The roads used for these so-called "Bridle Paths" are the dirt roads which run throughout the entire State, generally higher in the hills than the main motor roads. They are soft surfaced, shady, always beautiful, and very seldom used by motor cars. At present, there are over 400 miles of these roads marked with stops arranged every ten to twenty miles for the riders' convenience for luncheon or over night. It is planned to complete the system during the summer of 1930, when there will be over 700 miles available for horseback riding. One can generally count on the bridle paths being in good condition from May 1st to November 1st, and in some places for a longer season. The Association marks the routes with white arrows, with the letters "G. Mt. H. A." in green, and issues a guide book giving the names of farmhouses, inns and hotels where riders and horses will find comfortable quarters. The object of the Association is to encourage the raising and use of horses in Vermont. The Headquarters of the Association are at Rutland; Pres., Mrs. William H. Field, Mendon; Brattleboro Section, Dr. Grace Burnett; Brandon Section, Mr. E. C. Rockwell.

Route No. 1 runs from the Massachusetts State line south of Bennington to St. Albans; No. 2 crosses the state from Brattleboro to Rutland; No. 3 runs from Brattleboro to Bennington; No. 4 from the Massachusetts State line south of Brattleboro to Lake Willoughby; No. 5 begins at Westminster near Walpole, N. H., and ends at Arlington; No. 6 goes from Windsor to Poulney; No. 7 from Lake Fairlee to Chimney Point, and No. 8 connects Routes No. 4 and No. 1 at Lake Willoughby and St. Albans.

Anyone may become a member of the Association upon payment of the dues of \$1.00 a year. The guide book, maps and all necessary information as to condition of routes, expenses of a trip, rental of horses, lodgings, equipment, etc., will be given to members upon request to headquarters at Rutland.



The Vermont Publicity Bureau, a department in the Secretary of State's Office, desires to be of service to all persons interested in Vermont and will gladly furnish information regarding hotels, boarding places, locations for summer homes, tours, recreational attractions and opportunities for hunting and fishing.

The following publications will be furnished: "Vermont Lakes and Mountains"; "Where to Stop When in Vermont," a hotel and resort directory; "Vermont Farms and Summer Homes for Rent"; also folders on "The Long Trail"; "Bridle Paths in Vermont"; Road Condition Map Folder (during summer months); and copies of motor vehicle and fish and game laws. Special requests for information not contained in the foregoing are welcomed and will be answered as fully as possible. Address inquiries to

State Publicity Bureau, Montpelier, Vermont.



VERMONT

The
Green Mountain
State



A Map Folder

Distributed by
STATE PUBLICITY BUREAU
Montpelier, Vermont

PRODUCED BY THE NATIONAL SURVEY, CHESTER, VERMONT

VISIT THE LONG TRAIL

From one end of Vermont to the other the Long Trail follows the sky-line of a two hundred mile mountain range, dipping into valleys, climbing over summits, passing through magnificent forests, sometimes skirting lakes. In all of the United States there is no foot-path like this.

You Can Visit the Trail or one of the Beautiful Summits in a Single Day's Trip from Various Convenient Points.

On either side of the mountain range approach trails leads up to the Long Trail from nearby motor highways. In addition there are highways that cross the Trail itself. One of the through roads, that which climbs through Sherburne Pass, crosses the Trail directly in front of the beautiful tramp center maintained by The Green Mountain Club and known as

LONG TRAIL LODGE

From the Lodge short walks lead to nearby points of beauty and interest, while longer circuits make splendid mountain summits accessible. Along the whole length of the Long Trail shelters are available every few miles for the tramp who enjoys an extended visit in the wilderness.

Trails, shelters and Lodge are maintained for the tramp and the lover of the woods and summits. A pocket guide-book describes the trails and gives information as to shelters, distances, and means of access. The guide-book will be sent on receipt of fifty cents. Address

THE GREEN MOUNTAIN CLUB
Rutland, Vermont.

FISH AND GAME

Fish—Open Seasons

Trout—Brook, Brown, Lock Leven, Steelhead and Rainbow—May 1 to Aug. 15. Exception: Windham County—April 15 to Aug. 1. Golden Trout, Lake Trout and Land-Locked Salmon—May 1 to Sept. 1. Note: See General Laws for exceptions to the above applying to Forest Lake, Big Averill Lake, Little Averill Lake in Essex County; Willoughby Lake in Orleans County; Lake Mitchell in Windsor County.

Legal Lengths and Daily Limits

Trout—Brook, Brown, Lock Leven, Golden—not less than 6 inches in length; not more than 25 fish, nor more than 5 pounds. Steelhead and Rainbow Trout—not less than 10 inches in length; not more than 25 fish, nor more than 5 pounds. Lake Trout and Land-Locked Salmon—not less than 15 inches in length, and not more than 10 pounds. Black Bass—not less than 10 inches in length, and not more than 10 fish. Pickerel—not less than 12 inches in length. Pike Perch—not less than 10 inches in length. (For exceptions see General Laws).

Game—Open Season

When Lawful to Take Same

Deer, one deer with horns not less than three inches long, between November 10th and November 20th, both dates inclusive excepting Sunday. Exception: Deer protected at all times in Franklin County.

Rabbits or hares..... Oct. 1-March 1
Gray Squirrels..... Oct. 1-Nov. 1
Moose, Caribou and Elk, protected at all times.

Game Birds—Open Season

Quail—Sept. 15-Dec. 1. Closed season on Ruffed Grouse (Partridge) until Oct. 1, 1931. Woodcock—Oct. 1-Nov. 1. English Snipe, Plover (other than Upland Plover) and shore birds—Sept. 16-Dec. 1. Exception: See General Laws in regard to Joes Pond, Danville, Stone Pond, Shadow Lake in Glover, Caspian Lake in Greensboro, Groton Pond or Lund's Pond in the town of Groton.

License Fees

Resident Fishing—\$1.00. Resident Hunting—\$1.00.
Resident Combination Fishing and Hunting—\$1.50.
Non-resident Fishing—\$3.15. Refer to reciprocal clause, Sec. 6337.
Non-resident Combination Hunting and Fishing—\$10.50.
Resident Trapping—\$1.00. Non-resident Trapping—\$50.00.
For all exceptions to the above General Laws, see Fish and Game Pamphlet, copy of which will be delivered by Town Clerk when license is obtained, or sent upon request by addressing Department of Fish and Game, Montpelier, Vermont.

GOLF COURSES IN VERMONT

18 Hole Golf Courses

| Name | Location |
|-------------------------|-------------|
| Burlington Country Club | Burlington |
| Lake Morey Club | Fairlee |
| Lyndon Golf Club | Lyndonville |
| Ekwanok Country Club | Manchester |
| Equinox Links Club | Manchester |
| Rochester Country Club | Rochester |
| Rutland Country Club | Rutland |
| Woodstock Country Club | Woodstock |

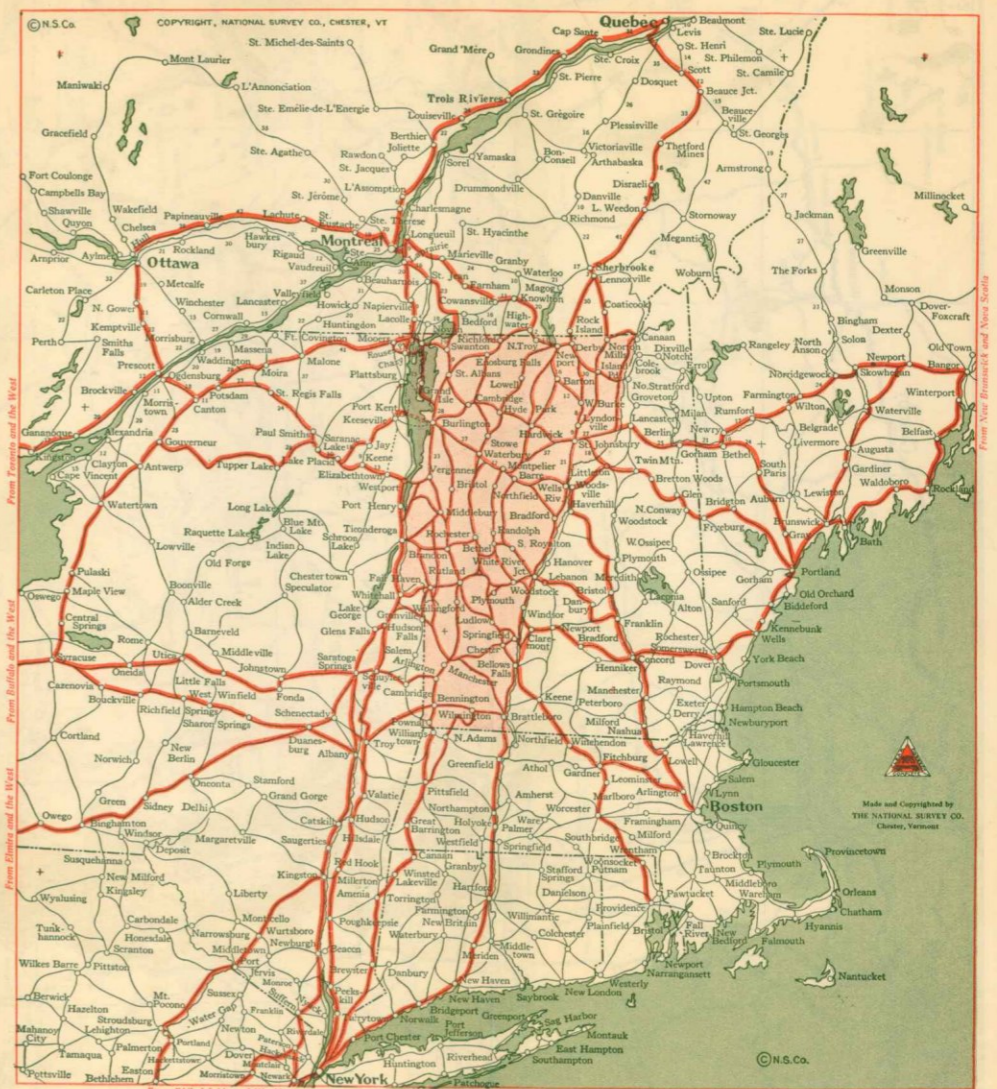
9 Hole Golf Courses

| | |
|----------------------------|---------------|
| Barre Country Club | Barre |
| Barre Golf Club | Barre |
| Meadow Brook Golf Club | Barre |
| Keewaydin | Barton |
| Vergennes | Basin Harbor |
| Bellows Falls Country Club | Bellows Falls |
| Mt. Anthony Country Club | Bennington |
| Bradford Golf Club | Bradford |
| Brandon Country Club, Inc. | Brandon |
| Brattleboro Country Club | Brattleboro |
| Country Club Estate | Burlington |
| Bomoseen Country Club | Castleton |
| Craftsbury Country Club | Craftsbury |
| Danville Country Club | Danville |
| Dorset Field Club, Inc. | Dorset |
| Kingsbury Farm | Derby |
| Caspian Lake Country Club | Greensboro |
| Hardwick Country Club | Hardwick |
| Lamoille Country Club | Hyde Park |
| Lake Champlain Golf Club | Mallett's Bay |
| Middlebury Country Club | Middlebury |
| Montpelier Country Club | Montpelier |
| Newport Country Club | Newport |
| Orleans Country Club | Orleans |
| Montague Golf Club | Randolph |
| Champlain Club | St. Albans |
| St. Johnsbury Country Club | St. Johnsbury |
| Hyde Manor Golf Club | Sudbury |
| Waterbury Inn Club | Waterbury |
| Wilmington Country Club | Wilmington |
| Hourglass Country Club | Windsor |

DISTANCES TO VERMONT

POINTS

| | | | | | | | | | | |
|--------------------|------|------|------|------|------|------|------|------|------|------|
| Albany | 38 | 105 | 81 | 162 | 177 | 246 | 94 | 190 | 202 | 138 |
| Atlanta | 1180 | 1222 | 1207 | 1304 | 1317 | 1367 | 1236 | 1332 | 1323 | 1261 |
| Baltimore | 376 | 418 | 394 | 500 | 513 | 563 | 432 | 528 | 519 | 457 |
| Bangor | 500 | 484 | 508 | 428 | 389 | 388 | 445 | 425 | 344 | 445 |
| Bellows Falls | 67 | 24 | 120 | 97 | 147 | 52 | 148 | 103 | 39 | 39 |
| Bennington | 67 | 43 | 126 | 126 | 185 | 58 | 154 | 164 | 100 | |
| Binghamton | 166 | 233 | 209 | 298 | 313 | 384 | 230 | 326 | 330 | 266 |
| Boston | 160 | 111 | 107 | 231 | 198 | 224 | 163 | 259 | 180 | 140 |
| Brattleboro | 43 | 24 | 141 | 121 | 177 | 76 | 172 | 127 | 63 | |
| Bretton Woods | 178 | 117 | 141 | 118 | 79 | 78 | 123 | 115 | 34 | 78 |
| Buffalo | 326 | 393 | 369 | 414 | 429 | 500 | 346 | 442 | 474 | 391 |
| Burlington | 126 | 120 | 144 | 39 | 77 | 68 | 28 | 64 | 84 | 97 |
| Chicago | 919 | 986 | 962 | 1007 | 1022 | 1093 | 939 | 1035 | 1067 | 984 |
| Cincinnati | 816 | 883 | 859 | 942 | 957 | 1026 | 872 | 968 | 980 | 916 |
| Cleveland | 523 | 590 | 566 | 611 | 626 | 697 | 543 | 639 | 671 | 588 |
| Columbus | 686 | 753 | 720 | 803 | 818 | 887 | 742 | 838 | 850 | 786 |
| Kansas City | 1406 | 1473 | 1449 | 1532 | 1547 | 1616 | 1462 | 1558 | 1570 | 1506 |
| Los Angeles | 3395 | 3462 | 3438 | 3521 | 3536 | 3605 | 3451 | 3547 | 3559 | 3495 |
| Harrisburg | 298 | 365 | 341 | 422 | 437 | 506 | 354 | 450 | 462 | 398 |
| Hartford | 111 | 108 | 84 | 221 | 205 | 255 | 153 | 249 | 257 | 247 |
| Indianapolis | 864 | 931 | 907 | 990 | 1005 | 1074 | 920 | 1016 | 1028 | 964 |
| Jacksonville | 1300 | 1342 | 1318 | 1424 | 1437 | 1497 | 1356 | 1452 | 1443 | 1381 |
| Kansas City | 1406 | 1473 | 1449 | 1532 | 1547 | 1616 | 1462 | 1558 | 1570 | 1506 |
| Los Angeles | 3395 | 3462 | 3438 | 3521 | 3536 | 3605 | 3451 | 3547 | 3559 | 3495 |
| Montpelier | 126 | 97 | 121 | 39 | 63 | 69 | 64 | 38 | 58 | |
| Montreal | 227 | 221 | 245 | 101 | 140 | 135 | 169 | 73 | 154 | 198 |
| New Haven | 135 | 145 | 121 | 261 | 242 | 292 | 193 | 289 | 294 | 284 |
| New Orleans | 1731 | 1773 | 1758 | 1855 | 1868 | 1918 | 1787 | 1883 | 1874 | 1812 |
| New York | 196 | 218 | 197 | 322 | 315 | 365 | 254 | 350 | 321 | 257 |
| Newport | 185 | 153 | 177 | 90 | 63 | 63 | 128 | 55 | 44 | 112 |
| Ottawa | 352 | 346 | 370 | 236 | 265 | 260 | 294 | 198 | 279 | 323 |
| Philadelphia | 270 | 312 | 288 | 394 | 407 | 457 | 326 | 422 | 413 | 351 |
| Pittsburgh | 496 | 563 | 539 | 622 | 637 | 706 | 552 | 648 | 660 | 596 |
| Portland, Me. | 209 | 107 | 166 | 214 | 176 | 175 | 203 | 241 | 139 | 159 |
| Providence | 166 | 127 | 127 | 247 | 223 | 273 | 179 | 275 | 229 | 165 |
| Quebec | 397 | 327 | 369 | 264 | 256 | 185 | 339 | 236 | 224 | 288 |
| Richmond | 534 | 576 | 552 | 638 | 671 | 721 | 590 | 686 | 677 | 615 |
| Rochester | 271 | 238 | 214 | 359 | 374 | 445 | 291 | 387 | 411 | 336 |
| San Francisco | 2938 | 3005 | 2981 | 3026 | 3041 | 3112 | 2958 | 3054 | 3086 | 3003 |
| St. Albans | 154 | 148 | 172 | 39 | 65 | 55 | 96 | 81 | 123 | |
| St. Johnsbury | 164 | 103 | 127 | 84 | 38 | 44 | 111 | 81 | 64 | 64 |
| St. Louis | 1109 | 1176 | 1152 | 1235 | 1250 | 1319 | 1165 | 1261 | 1273 | 1209 |
| Saranac Lake | 196 | 190 | 214 | 120 | 159 | 210 | 138 | 148 | 204 | 183 |
| Saratoga | 223 | 280 | 266 | 355 | 370 | 441 | 287 | 383 | 387 | 323 |
| Seattle | 3190 | 3257 | 3233 | 3278 | 3293 | 3364 | 3210 | 3306 | 3338 | 3255 |
| Sherbrooke | 254 | 184 | 208 | 132 | 113 | 42 | 196 | 104 | 81 | 145 |
| Springfield, Mass. | 92 | 82 | 28 | 107 | 129 | 134 | 230 | 185 | 121 | |
| Syracuse | 170 | 237 | 213 | 258 | 273 | 344 | 190 | 286 | 318 | 235 |
| Toronto | 570 | 575 | 599 | 455 | 494 | 489 | 523 | 427 | 508 | 552 |
| Washington | 416 | 458 | 434 | 540 | 553 | 603 | 472 | 568 | 559 | 497 |
| White River Jct. | 100 | 39 | 63 | 97 | 58 | 112 | 45 | 123 | 64 | |
| Worcester | 123 | 84 | 84 | 204 | 181 | 231 | 136 | 232 | 187 | 123 |

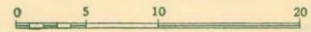


A Map of NEW HAMPSHIRE and VERMONT

Issued jointly by the
NEW HAMPSHIRE
BOARD OF PUBLICITY
CONCORD, N. H.

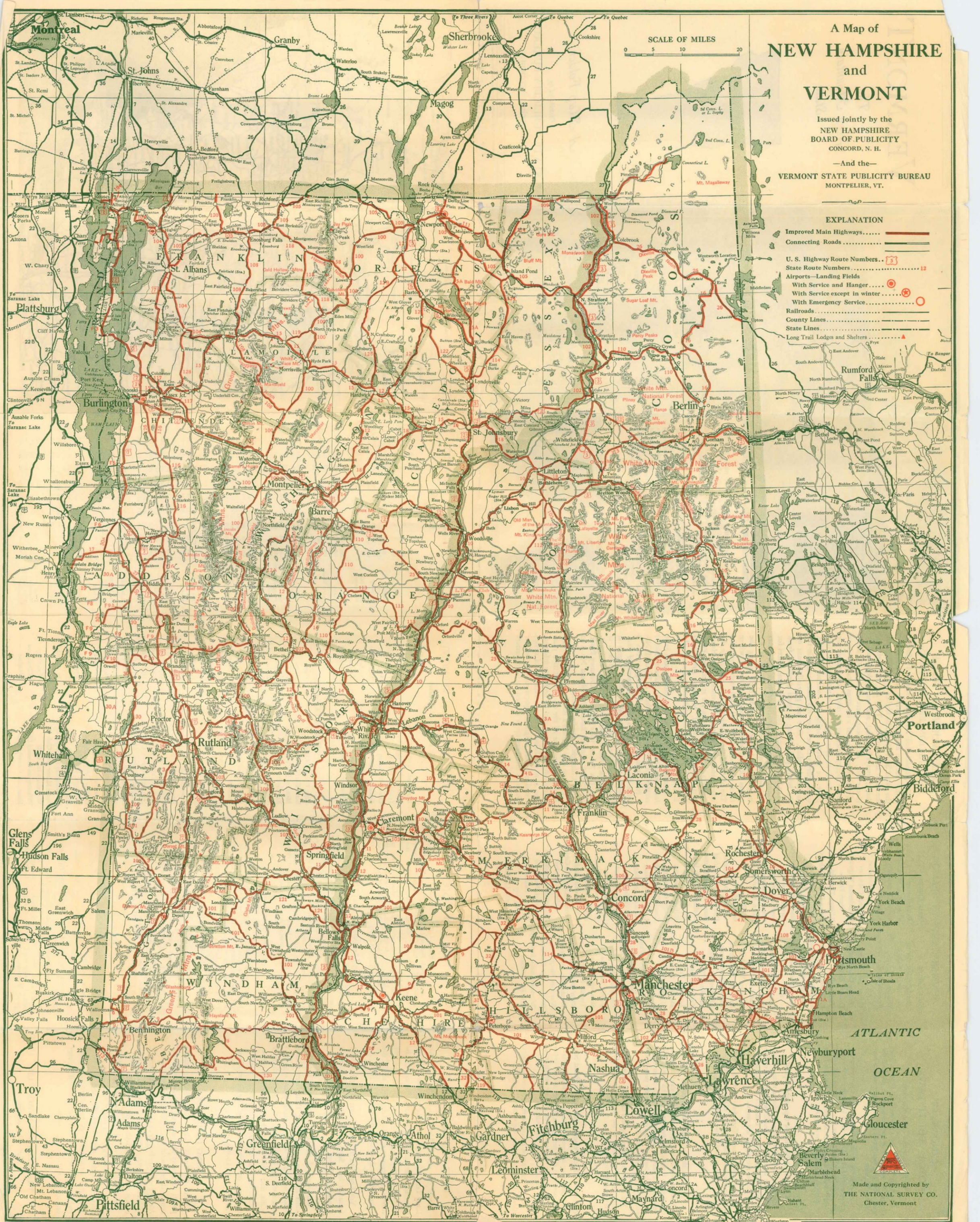
—And the—
VERMONT STATE PUBLICITY BUREAU
MONTEPELIER, VT.

SCALE OF MILES



EXPLANATION

- Improved Main Highways.....
- Connecting Roads.....
- U. S. Highway Route Numbers.....
- State Route Numbers.....
- Airports—Landing Fields
With Service and Hanger.....
- With Service except in winter.....
- With Emergency Service.....
- Railroads.....
- County Lines.....
- State Lines.....
- Long Trail Lodges and Shelters.....



ATLANTIC
OCEAN

Made and Copyrighted by
THE NATIONAL SURVEY CO.
Chester, Vermont



Boston

**SYNOPSIS OF
MOTOR VEHICLE LAWS**

Registration—Non-Resident

Under the Vermont law a non-resident is exempt from registration while in this state as a visitor, provided the state of his residence grants the same reciprocity to residents of Vermont.

If under the agreement of reciprocity, a non-resident desires to operate in this state for a longer period than the agreement permits, he may secure registration for a four months' period dating from his arrival in the state for a fee equal to one half the resident fee.

Careless or Negligent Operators; Speed

The laws of Vermont provide that a motor vehicle shall not be operated on a public highway in a careless or negligent manner, nor in a manner to endanger the safety, life, or property of any person.

Cities and incorporated villages have authority to make special regulations relative to speed of motor vehicles provided such limit is fixed at not less than twenty miles per hour.

Accidents; Duties of Operator

The operator of any motor vehicle involved in an accident must immediately stop and give his name, residence, license number and the name of the owner of the motor vehicle then under his control, to the party whose person or property is injured.

The operator is further required to report the accident, within twenty-four hours, to the Commissioner of Motor Vehicles at Montpelier, Vt.

Not Over Three Persons Allowed on Front Seat

A person must not operate a motor vehicle in Vermont, with more than three persons on the front seat, or in the front or driving compartment of a motor vehicle occupied by the operator of such vehicle.

For any information relative to the motor vehicle laws, address the Motor Vehicle Department, Montpelier, Vermont.

SUMMER CAMPS IN VERMONT

Boys' Camps

- Abnaki, North Hero
- Arrowhead, Poulney
- Billings, Thetford
- Brook Farm, East Dummerston
- Cheemauna, Sharon
- Dingley Dell, South Hero
- Duncan, Derby
- Duncan, Peru
- Eagle Mountain, Milton
- Enajerog, Wilmington
- Gaysville, Gaysville
- Green Mountain, Hubbardton
- Iroquois, Colchester
- Kaaterskill, Pownal
- Kadimah, Milton
- Kahagan, Woodbury
- Kawawin, Wallingford
- Keewaydin, Salisbury
- Kill Kare, St. Albans
- Kill Kare, Tutoring
- Kokosing, Strafford
- Lanakila, Fairlee
- Maquam, Swanton
- Neperan, Newport
- Owl, Peacham
- Passumpsic, West Fairlee
- Plymouth, Plymouth
- St. Ann's, Isle La Motte
- Sangamon, Pittsford
- Shelter, Marlboro
- Shenewis, Barton
- Tawasi, Sherburne
- Twin Lakes, Hubbardton
- Waubanake, Brandon
- Wayesses, Morgan
- Winape, East Charleston
- Winnewauka, Lunenburg
- Zelenko, Salisbury

Girls' Camps

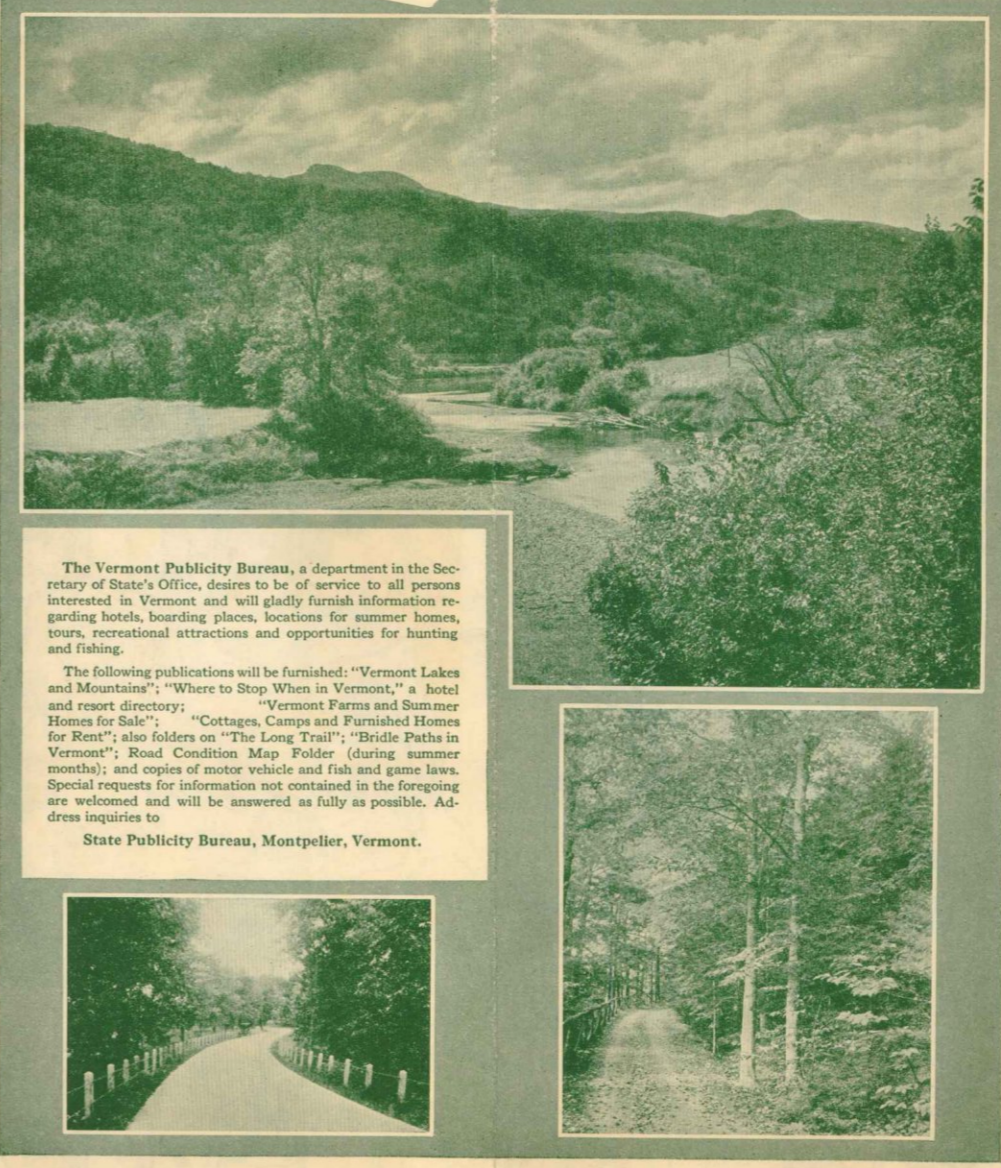
- Aloha, Fairlee
- Aloha Hive, West Fairlee
- Arden, Dummerston
- Aurora, Colchester
- Awance, Hubbardton
- Barnard, Colchester
- Beenadeewin Wigwam, South Fairlee
- Billings, Thetford
- Brown Ledge, Colchester
- Carmelia, Milton
- Dunmore, Salisbury
- Ecole Champlain, Ferrisburg
- Farwell, Newbury
- Gaysville, Gaysville
- Green Mountain, Arlington
- Green Mountain, Hubbardton
- Green Mountain, West Dummerston
- Hanoum Hill, Thetford
- Hanoum Lake, Thetford
- Hochelago, South Hero
- Ken Jockette, South Strafford
- Killooleet, Hancock
- Kiniya, Colchester
- Kinni-Kinnio, Poulney
- Locheam, Thetford
- Marbury, Ferrisburg
- Naidni, Salisbury
- Neshobe, Thetford
- Quinibeck, Fairlee
- Songadeewin, Westmore
- Sunrise, Benson
- Teela Wooket, Roxbury
- Vermont Camp for Crippled Children, Goshen
- Waubanake, Brandon
- Wilakowi, Northfield
- Wynona, Fairlee
- Wyoda, Ely
- Ziptekana, Colchester

**GREEN MOUNTAIN HORSE
ASSOCIATION BRIDLE PATHS**

The roads used for these so-called "Bridle Paths" are the dirt roads which run throughout the entire State, generally higher in the hills than the main motor roads. They are soft surfaced, shady, always beautiful, and very seldom used by motor cars. At present, there are over 400 miles of these roads marked with stops arranged every ten to twenty miles for the riders' convenience for luncheon or over night. It is planned to complete the system during the summer of 1930, when there will be over 700 miles available for horseback riding. One can generally count on the bridle paths being in good condition from May 1st to November 1st, and in some places for a longer season. The Association marks the routes with white arrows, with the letters "G. Mt. H. A." in green, and issues a guide book giving the names of farmhouses, inns and hotels where riders and horses will find comfortable quarters. The object of the Association is to encourage the raising and use of horses in Vermont. The Headquarters of the Association are at Rutland; Pres., Mrs. William H. Field, Mendon; Brattleboro Section, Dr. Grace Burnett; Brandon Section, Mr. E. C. Rockwell.

Route No. 1 runs from the Massachusetts State line south of Bennington to St. Albans; No. 2 crosses the state from Brattleboro to Rutland; No. 3 runs from Brattleboro to Bennington; No. 4 from the Massachusetts State line south of Brattleboro to Lake Willoughby; No. 5 begins at Westminster near Walpole, N. H., and ends at Arlington; No. 6 goes from Windsor to Poulney; No. 7 from Lake Fairlee to Chimney Point, and No. 8 connects Routes No. 4 and No. 1 at Lake Willoughby and St. Albans.

Anyone may become a member of the Association upon payment of the dues of \$1.00 a year. The guide book, maps and all necessary information as to condition of routes, expenses of a trip, rental of horses, lodgings, equipment, etc., will be given to members upon request to headquarters at Rutland.



The Vermont Publicity Bureau, a department in the Secretary of State's Office, desires to be of service to all persons interested in Vermont and will gladly furnish information regarding hotels, boarding places, locations for summer homes, tours, recreational attractions and opportunities for hunting and fishing.

The following publications will be furnished: "Vermont Lakes and Mountains"; "Where to Stop When in Vermont," a hotel and resort directory; "Vermont Farms and Summer Homes for Rent"; also folders on "The Long Trail"; "Bridle Paths in Vermont"; Road Condition Map Folder (during summer months); and copies of motor vehicle and fish and game laws. Special requests for information not contained in the foregoing are welcomed and will be answered as fully as possible. Address inquiries to

State Publicity Bureau, Montpelier, Vermont.

VERMONT

The
Green Mountain
State



A Map Folder

Distributed by
STATE PUBLICITY BUREAU
Montpelier, Vermont

VISIT THE LONG TRAIL

From one end of Vermont to the other the Long Trail follows the sky-line of a two hundred mile mountain range, dipping into valleys, climbing over summits, passing through magnificent forests, sometimes skirting lakes. In all of the United States there is no foot-path like this.

You Can Visit the Trail or one of the Beautiful Summits in a Single Day's Trip from Various Convenient Points.

On either side of the mountain range approach trails leads up to the Long Trail from nearby motor highways. In addition there are highways that cross the Trail itself. One of the through roads, that which climbs through Sherburne Pass, crosses the Trail directly in front of the beautiful tramp center maintained by The Green Mountain Club and known as

LONG TRAIL LODGE

From the Lodge short walks lead to nearby points of beauty and interest, while longer circuits make splendid mountain summits accessible. Along the whole length of the Long Trail shelters are available every few miles for the tramp who enjoys an extended visit in the wilderness.

Trails, shelters and Lodge are maintained for the tramp and the lover of the woods and summits. A pocket guide-book describes the trails and gives information as to shelters, distances, and means of access. The guide-book will be sent on receipt of fifty cents. Address

THE GREEN MOUNTAIN CLUB
Rutland, Vermont.

FISH AND GAME

Fish—Open Seasons

Trout—Brook, Brown, Lock Leven, Steelhead and Rainbow—May 1 to Aug. 15. Exception: Windham County—April 15 to Aug. 1. Golden Trout, Lake Trout and Land-Locked Salmon—May 1 to Sept. 1. Note: See General Laws for exceptions to the above applying to Forest Lake, Big Averill Lake, Little Averill Lake in Essex County; Willoughby Lake in Orleans County; Lake Mitchell in Windsor County.

Legal Lengths and Daily Limits

Trout—Brook, Brown, Lock Leven, Golden—not less than 6 inches in length; not more than 25 fish, nor more than 5 pounds. Steelhead and Rainbow Trout—not less than 10 inches in length; not more than 25 fish, nor more than 5 pounds. Lake Trout and Land-Locked Salmon—not less than 15 inches in length, and not more than 10 pounds. Black Bass—not less than 10 inches in length, and not more than 10 fish. Pickerel—not less than 12 inches in length. Pike Perch—not less than 10 inches in length. (For exceptions see General Laws).

Game—Open Season

When Lawful to Take Same

Deer, one deer with horns not less than three inches long, between November 10th and November 20th, both dates inclusive excepting Sunday. Exception: Deer protected at all times in Franklin County.

Rabbits or hares..... Oct. 1-March 1
Gray Squirrels..... Oct. 1-Nov. 1
Moose, Caribou and Elk, protected at all times.

Game Birds—Open Season

Quail—Sept. 15-Dec. 1. Closed season on Ruffed Grouse (Partridge) until Oct. 1, 1931. Woodcock—Oct. 1-Nov. 1. English Snipe, Plover (other than Upland Plover) and shore birds—Sept. 16-Dec. 1. Exception: See General Laws in regard to Joes Pond, Danville, Stone Pond, Shadow Lake in Glover, Caspian Lake in Greensboro, Groton Pond or Lund's Pond in the town of Groton.

License Fees

Resident Fishing—\$1.00. Resident Hunting—\$1.00.
Resident Combination Fishing and Hunting—\$1.50.
Non-resident Fishing—\$3.15. Refer to reciprocal clause, Sec. 6337.
Non-resident Combination Hunting and Fishing—\$10.50.
Resident Trapping—\$1.00. Non-resident Trapping—\$50.00.
For all exceptions to the above General Laws, see Fish and Game Pamphlet, copy of which will be delivered by Town Clerk when license is obtained, or sent upon request by addressing Department of Fish and Game, Montpelier, Vermont.

GOLF COURSES IN VERMONT

18 Hole Golf Courses

| Name | Location |
|-------------------------|-------------|
| Burlington Country Club | Burlington |
| Lake Morey Club | Fairlee |
| Lyndon Golf Club | Lyndonville |
| Ekwanok Country Club | Manchester |
| Equinox Links Club | Manchester |
| Rochester Country Club | Rochester |
| Rutland Country Club | Rutland |
| Woodstock Country Club | Woodstock |

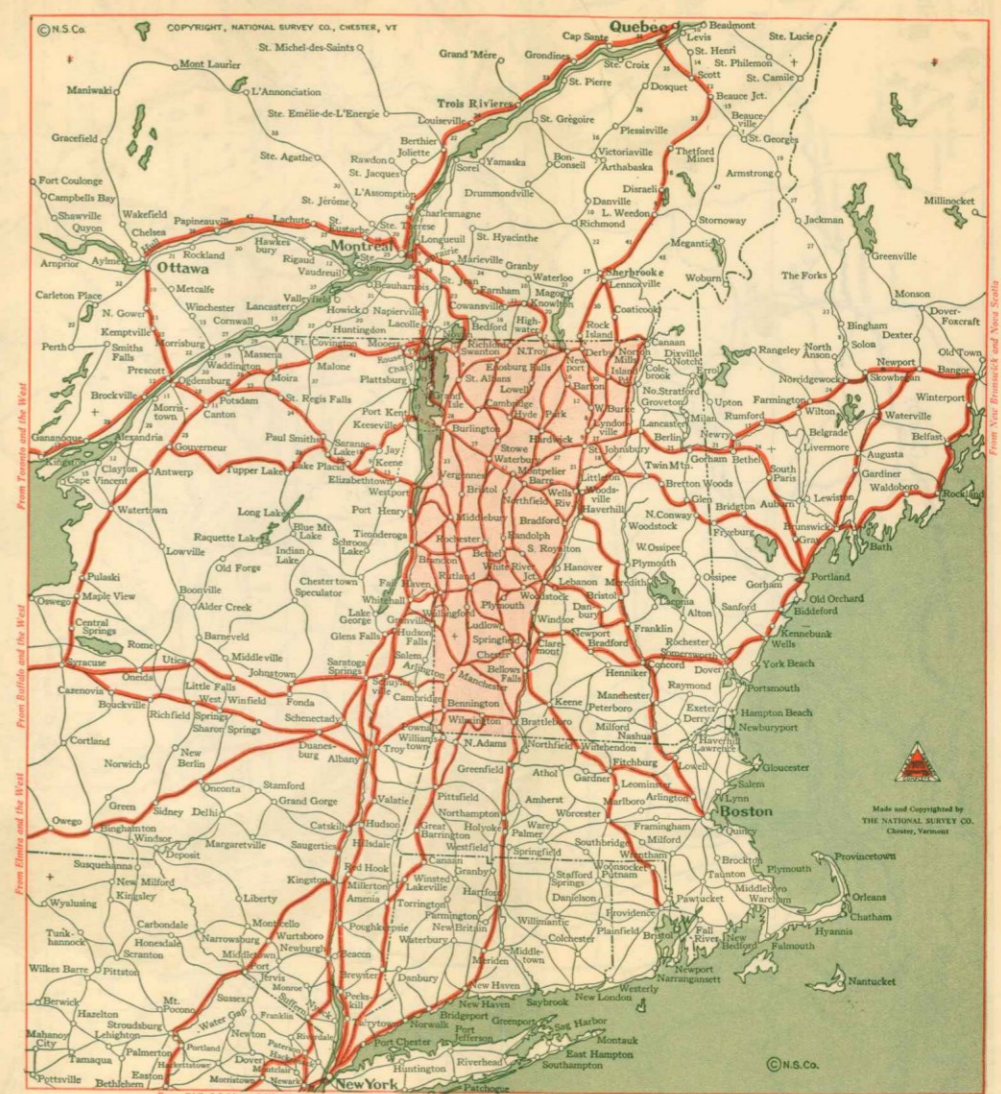
9 Hole Golf Courses

| | |
|----------------------------|---------------|
| Barre Country Club | Barre |
| Barre Golf Club | Barre |
| Meadow Brook Golf Club | Barre |
| Keewaydin | Barton |
| Vergennes | Basin Harbor |
| Bellows Falls Country Club | Bellows Falls |
| Mt. Anthony Country Club | Bennington |
| Bradford Golf Club | Bradford |
| Brandon Country Club, Inc. | Brandon |
| Brattleboro Country Club | Brattleboro |
| Country Club Estate | Burlington |
| Bomoseen Country Club | Castleton |
| Craftsbury Country Club | Craftsbury |
| Danville Country Club | Danville |
| Dorset Field Club, Inc. | Dorset |
| Kingsbury Farm | Derby |
| Caspian Lake Country Club | Greensboro |
| Hardwick Country Club | Hardwick |
| Lamoille Country Club | Hyde Park |
| Lake Champlain Golf Club | Mallett's Bay |
| Middlebury Country Club | Middlebury |
| Montpelier Country Club | Montpelier |
| Newport Country Club | Newport |
| Orleans Country Club | Orleans |
| Montague Golf Club | Randolph |
| Champlain Club | St. Albans |
| St. Johnsbury Country Club | St. Johnsbury |
| Hyde Manor Golf Club | Sudbury |
| Waterbury Inn Club | Waterbury |
| Wilmington Country Club | Wilmington |
| Hourglass Country Club | Windsor |

DISTANCES TO VERMONT

POINTS

| | | | | | | | | | | |
|--------------------|------|------|------|------|------|------|------|------|------|------|
| Albany | 38 | 105 | 81 | 162 | 177 | 246 | 94 | 190 | 202 | 138 |
| Atlanta | 1180 | 1222 | 1207 | 1304 | 1317 | 1367 | 1236 | 1332 | 1323 | 1261 |
| Baltimore | 376 | 418 | 394 | 500 | 513 | 563 | 432 | 528 | 519 | 457 |
| Bangor | 500 | 484 | 508 | 428 | 389 | 388 | 445 | 425 | 344 | 445 |
| Bellows Falls | 67 | 24 | 120 | 97 | 147 | 52 | 148 | 103 | 39 | 39 |
| Bennington | 67 | 43 | 126 | 126 | 185 | 58 | 154 | 164 | 100 | |
| Binghamton | 166 | 233 | 209 | 298 | 313 | 384 | 230 | 326 | 330 | 266 |
| Boston | 160 | 111 | 107 | 231 | 198 | 224 | 163 | 259 | 180 | 140 |
| Brattleboro | 43 | 24 | 141 | 121 | 177 | 76 | 172 | 127 | 63 | |
| Bretton Woods | 178 | 117 | 141 | 118 | 79 | 78 | 123 | 115 | 34 | 78 |
| Buffalo | 326 | 393 | 369 | 414 | 429 | 500 | 346 | 442 | 474 | 391 |
| Burlington | 126 | 120 | 144 | 39 | 77 | 68 | 28 | 44 | 84 | 97 |
| Chicago | 919 | 986 | 962 | 1007 | 1022 | 1093 | 939 | 1035 | 1067 | 984 |
| Cincinnati | 816 | 883 | 859 | 942 | 957 | 1026 | 872 | 968 | 980 | 916 |
| Cleveland | 523 | 590 | 566 | 611 | 626 | 697 | 543 | 639 | 671 | 588 |
| Columbus | 686 | 753 | 720 | 803 | 818 | 887 | 742 | 838 | 850 | 786 |
| Kansas City | 1406 | 1473 | 1449 | 1532 | 1547 | 1616 | 1462 | 1558 | 1570 | 1506 |
| Los Angeles | 3395 | 3462 | 3438 | 3521 | 3536 | 3605 | 3451 | 3547 | 3559 | 3495 |
| Harrisburg | 298 | 365 | 341 | 422 | 437 | 506 | 354 | 450 | 462 | 398 |
| Hartford | 111 | 108 | 84 | 221 | 205 | 255 | 153 | 249 | 257 | 247 |
| Indianapolis | 864 | 931 | 907 | 990 | 1005 | 1074 | 920 | 1016 | 1028 | 964 |
| Jacksonville | 1300 | 1342 | 1318 | 1424 | 1437 | 1497 | 1356 | 1452 | 1443 | 1381 |
| Kansas City | 1406 | 1473 | 1449 | 1532 | 1547 | 1616 | 1462 | 1558 | 1570 | 1506 |
| Los Angeles | 3395 | 3462 | 3438 | 3521 | 3536 | 3605 | 3451 | 3547 | 3559 | 3495 |
| Montpelier | 126 | 97 | 121 | 39 | 63 | 69 | 64 | 38 | 58 | |
| Montreal | 227 | 221 | 245 | 101 | 140 | 135 | 169 | 73 | 154 | 198 |
| New Haven | 135 | 145 | 121 | 261 | 242 | 292 | 193 | 289 | 294 | 284 |
| New Orleans | 1731 | 1773 | 1758 | 1855 | 1868 | 1918 | 1787 | 1883 | 1874 | 1812 |
| New York | 196 | 218 | 197 | 322 | 315 | 365 | 254 | 350 | 321 | 257 |
| Newport | 185 | 153 | 177 | 90 | 63 | 63 | 128 | 55 | 44 | 112 |
| Ottawa | 352 | 346 | 370 | 236 | 265 | 260 | 294 | 198 | 279 | 323 |
| Philadelphia | 270 | 312 | 288 | 394 | 407 | 457 | 326 | 422 | 413 | 351 |
| Pittsburgh | 496 | 563 | 539 | 622 | 637 | 706 | 552 | 648 | 660 | 596 |
| Portland, Me. | 209 | 107 | 166 | 214 | 176 | 175 | 203 | 241 | 139 | 159 |
| Providence | 166 | 127 | 127 | 247 | 223 | 273 | 179 | 275 | 229 | 165 |
| Quebec | 397 | 327 | 369 | 264 | 256 | 185 | 339 | 236 | 224 | 288 |
| Richmond | 534 | 576 | 552 | 638 | 671 | 721 | 590 | 686 | 677 | 615 |
| Rochester | 271 | 338 | 314 | 359 | 370 | 441 | 287 | 383 | 387 | 323 |
| San Francisco | 2938 | 3005 | 2981 | 3026 | 3041 | 3112 | 2958 | 3054 | 3086 | 3003 |
| St. Albans | 154 | 148 | 172 | 39 | 65 | 55 | 96 | 81 | 123 | |
| St. Johnsbury | 164 | 103 | 127 | 84 | 38 | 44 | 111 | 81 | 64 | 64 |
| St. Louis | 1109 | 1176 | 1152 | 1235 | 1250 | 1319 | 1165 | 1261 | 1273 | 1209 |
| Saranac Lake | 196 | 190 | 214 | 120 | 159 | 210 | 138 | 148 | 204 | 183 |
| Saratoga | 223 | 280 | 266 | 355 | 370 | 441 | 287 | 383 | 387 | 323 |
| Seattle | 3190 | 3257 | 3233 | 3278 | 3293 | 3364 | 3210 | 3306 | 3338 | 3255 |
| Sherbrooke | 254 | 184 | 208 | 132 | 113 | 42 | 196 | 104 | 81 | 145 |
| Springfield, Mass. | 92 | 82 | 58 | 107 | 129 | 134 | 230 | 185 | 121 | |
| Syracuse | 170 | 237 | 213 | 258 | 273 | 344 | 190 | 286 | 318 | 235 |
| Toronto | 570 | 575 | 599 | 455 | 494 | 489 | 523 | 427 | 508 | 552 |
| Washington | 416 | 458 | 434 | 540 | 553 | 603 | 472 | 568 | 559 | 497 |
| White River Jct. | 100 | 39 | 63 | 97 | 58 | 112 | 45 | 123 | 64 | |
| Worcester | 123 | 84 | 84 | 204 | 181 | 231 | 136 | 232 | 187 | 123 |

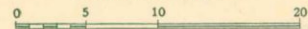


A Map of NEW HAMPSHIRE and VERMONT -1930-

Issued jointly by the
NEW HAMPSHIRE
BOARD OF PUBLICITY
CONCORD, N. H.

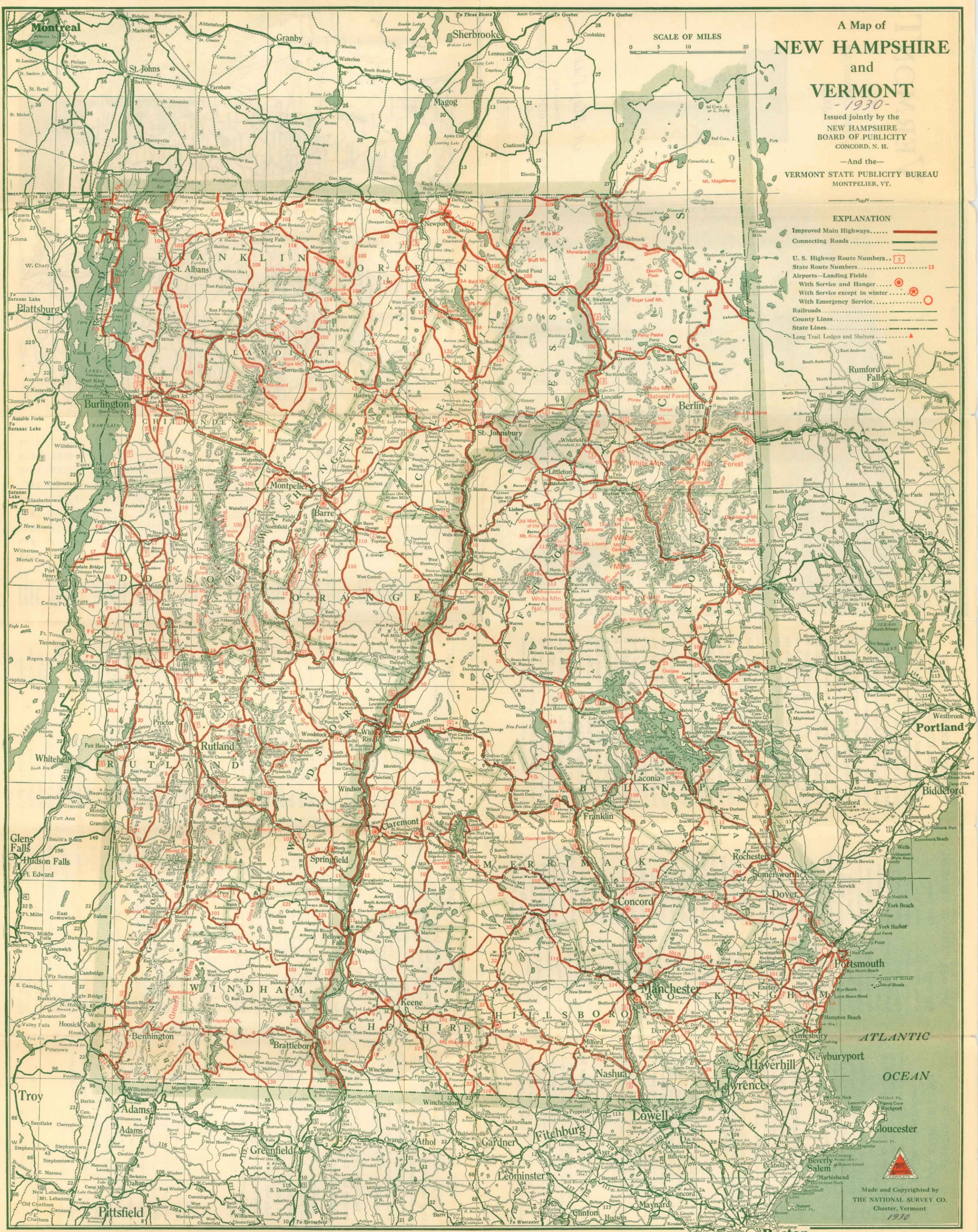
—And the—
VERMONT STATE PUBLICITY BUREAU
MONTPELIER, VT.

SCALE OF MILES



EXPLANATION

- Improved Main Highways.....
- Connecting Roads.....
- U. S. Highway Route Numbers.....
- State Route Numbers.....
- Airports—Landing Fields
With Service and Hanger.....
- With Service except in winter
With Emergency Service.....
- Railroads.....
- County Lines.....
- State Lines.....
- Long Trail Lodges and Shelters.....



ATLANTIC
OCEAN

Made and Copyrighted by
THE NATIONAL SURVEY CO.
Chester, Vermont
1930

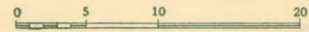
Boston

A Map of NEW HAMPSHIRE and VERMONT

Issued jointly by the
NEW HAMPSHIRE
BOARD OF PUBLICITY
CONCORD, N. H.

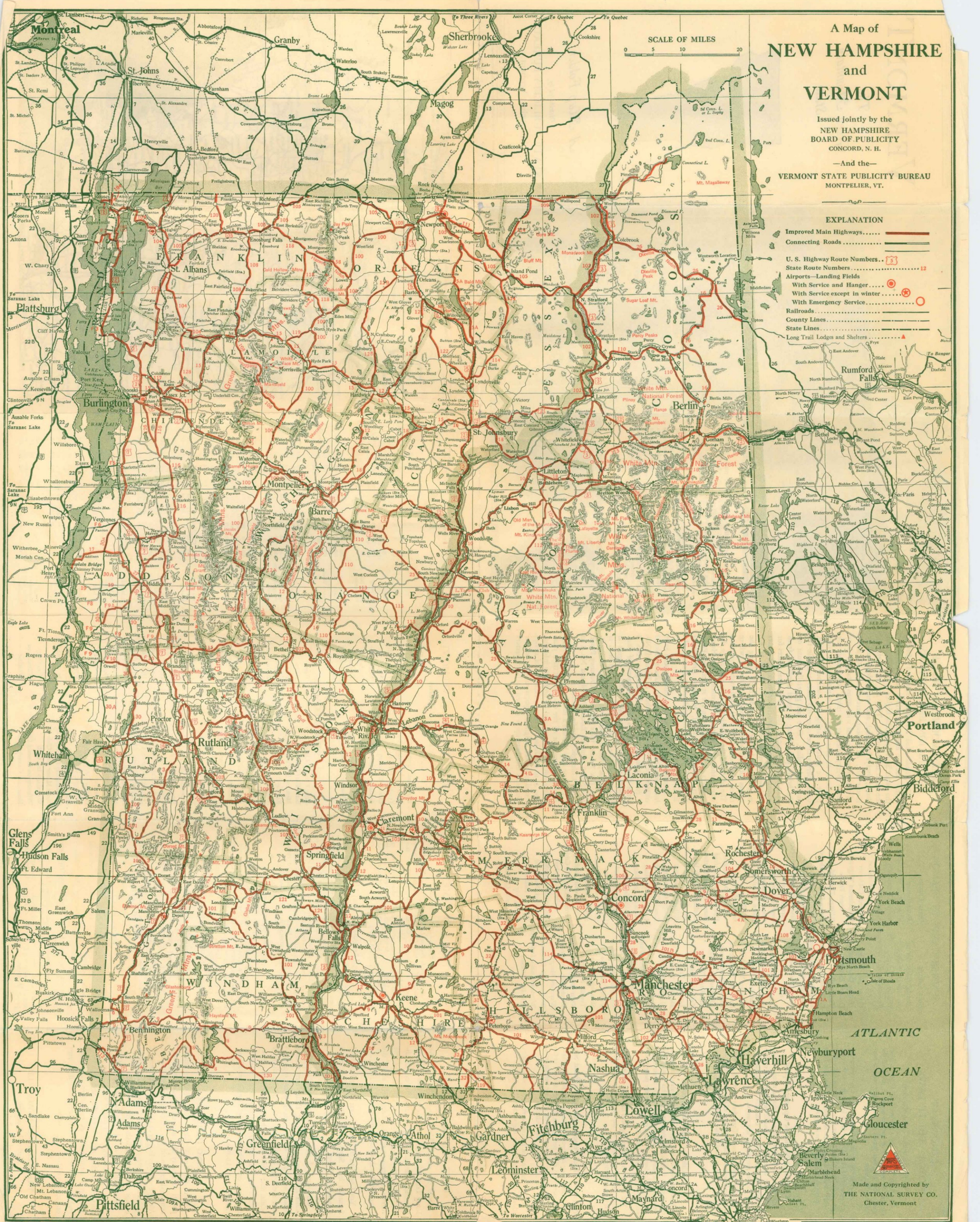
—And the—
VERMONT STATE PUBLICITY BUREAU
MONTEPELIER, VT.

SCALE OF MILES



EXPLANATION

- Improved Main Highways.....
- Connecting Roads.....
- U. S. Highway Route Numbers.....
- State Route Numbers.....
- Airports—Landing Fields
With Service and Hanger.....
- With Service except in winter.....
- With Emergency Service.....
- Railroads.....
- County Lines.....
- State Lines.....
- Long Trail Lodges and Shelters.....



ATLANTIC
OCEAN

Made and Copyrighted by
THE NATIONAL SURVEY CO.
Chester, Vermont



Boston

**SYNOPSIS OF
MOTOR VEHICLE LAWS**

Registration—Non-Resident

Under the Vermont law a non-resident is exempt from registration while in this state as a visitor, provided the state of his residence grants the same reciprocity to residents of Vermont.

If under the agreement of reciprocity, a non-resident desires to operate in this state for a longer period than the agreement permits, he may secure registration for a four months' period dating from his arrival in the state for a fee equal to one half the resident fee.

Careless or Negligent Operators; Speed

The laws of Vermont provide that a motor vehicle shall not be operated on a public highway in a careless or negligent manner, nor in a manner to endanger the safety, life, or property of any person.

Cities and incorporated villages have authority to make special regulations relative to speed of motor vehicles provided such limit is fixed at not less than twenty miles per hour.

Accidents; Duties of Operator

The operator of any motor vehicle involved in an accident must immediately stop and give his name, residence, license number and the name of the owner of the motor vehicle then under his control, to the party whose person or property is injured.

The operator is further required to report the accident, within twenty-four hours, to the Commissioner of Motor Vehicles at Montpelier, Vt.

Not Over Three Persons Allowed on Front Seat

A person must not operate a motor vehicle in Vermont, with more than three persons on the front seat, or in the front or driving compartment of a motor vehicle occupied by the operator of such vehicle.

For any information relative to the motor vehicle laws, address the Motor Vehicle Department, Montpelier, Vermont.

SUMMER CAMPS IN VERMONT

Boys' Camps

- Abnaki, North Hero
- Arrowhead, Poulney
- Billings, Thetford
- Brook Farm, East Dummerston
- Cheemauna, Sharon
- Dingley Dell, South Hero
- Duncan, Derby
- Duncan, Peru
- Eagle Mountain, Milton
- Enajerog, Wilmington
- Gaysville, Gaysville
- Green Mountain, Hubbardton
- Iroquois, Colchester
- Kaaterskill, Pownal
- Kadimah, Milton
- Kahagan, Woodbury
- Kawawin, Wallingford
- Keewaydin, Salisbury
- Kill Kare, St. Albans
- Kill Kare, Tutoring
- Kokosing, Strafford
- Lanakila, Fairlee
- Maquam, Swanton
- Neperan, Newport
- Owl, Peacham
- Passumpsic, West Fairlee
- Plymouth, Plymouth
- St. Ann's, Isle La Motte
- Sangamon, Pittsford
- Shelter, Marlboro
- Shenewis, Barton
- Tawasi, Sherburne
- Twin Lakes, Hubbardton
- Waubanake, Brandon
- Wayesses, Morgan
- Winape, East Charleston
- Winnewauka, Lunenburg
- Zelenko, Salisbury

Girls' Camps

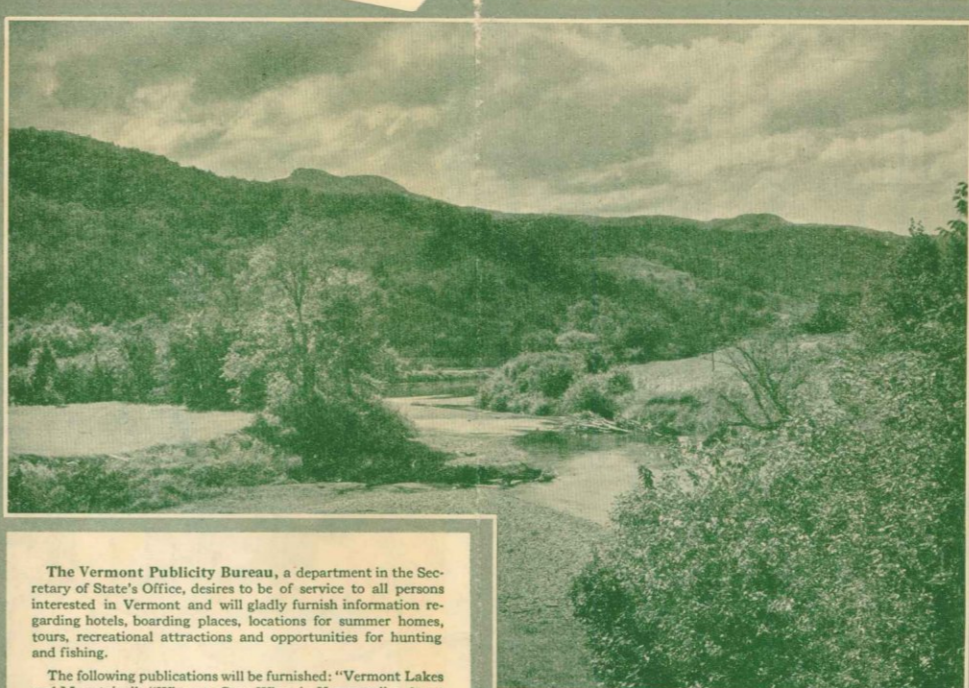
- Aloha, Fairlee
- Aloha Hive, West Fairlee
- Arden, Dummerston
- Aurora, Colchester
- Awance, Hubbardton
- Barnard, Colchester
- Beenadeewin Wigwam, South Fairlee
- Billings, Thetford
- Brown Ledge, Colchester
- Carmelia, Milton
- Dunmore, Salisbury
- Ecole Champlain, Ferrisburg
- Farwell, Newbury
- Gaysville, Gaysville
- Green Mountain, Arlington
- Green Mountain, Hubbardton
- Green Mountain, West Dummerston
- Hanoum Hill, Thetford
- Hanoum Lake, Thetford
- Hochelago, South Hero
- Ken Jockette, South Strafford
- Killooleet, Hancock
- Kiniya, Colchester
- Kinni-Kinnio, Poulney
- Locheam, Thetford
- Marbury, Ferrisburg
- Naidni, Salisbury
- Neshobe, Thetford
- Quinibeck, Fairlee
- Songadeewin, Westmore
- Sunrise, Benson
- Teela Wooket, Roxbury
- Vermont Camp for Crippled Children, Goshen
- Waubanake, Brandon
- Wilakowi, Northfield
- Wynona, Fairlee
- Wyoda, Ely
- Ziptekana, Colchester

**GREEN MOUNTAIN HORSE
ASSOCIATION BRIDLE PATHS**

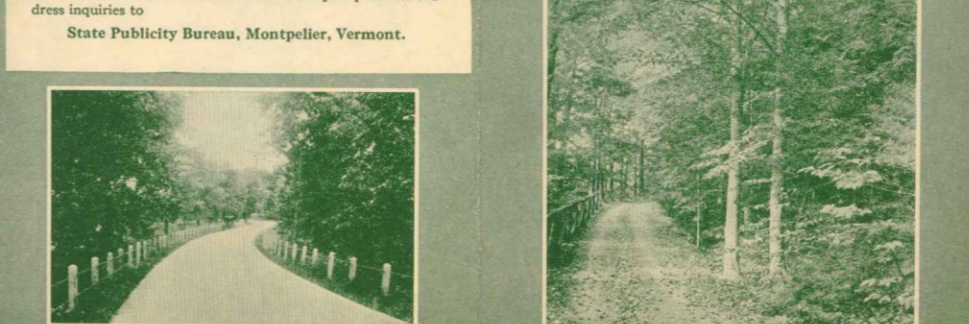
The roads used for these so-called "Bridle Paths" are the dirt roads which run throughout the entire State, generally higher in the hills than the main motor roads. They are soft surfaced, shady, always beautiful, and very seldom used by motor cars. At present, there are over 400 miles of these roads marked with stops arranged every ten to twenty miles for the riders' convenience for luncheon or over night. It is planned to complete the system during the summer of 1930, when there will be over 700 miles available for horseback riding. One can generally count on the bridle paths being in good condition from May 1st to November 1st, and in some places for a longer season. The Association marks the routes with white arrows, with the letters "G. Mt. H. A." in green, and issues a guide book giving the names of farmhouses, inns and hotels where riders and horses will find comfortable quarters. The object of the Association is to encourage the raising and use of horses in Vermont. The Headquarters of the Association are at Rutland; Pres., Mrs. William H. Field, Mendon; Brattleboro Section, Dr. Grace Burnett; Brandon Section, Mr. E. C. Rockwell.

Route No. 1 runs from the Massachusetts State line south of Bennington to St. Albans; No. 2 crosses the state from Brattleboro to Rutland; No. 3 runs from Brattleboro to Bennington; No. 4 from the Massachusetts State line south of Brattleboro to Lake Willoughby; No. 5 begins at Westminster near Walpole, N. H., and ends at Arlington; No. 6 goes from Windsor to Poulney; No. 7 from Lake Fairlee to Chimney Point, and No. 8 connects Routes No. 4 and No. 1 at Lake Willoughby and St. Albans.

Anyone may become a member of the Association upon payment of the dues of \$1.00 a year. The guide book, maps and all necessary information as to condition of routes, expenses of a trip, rental of horses, lodgings, equipment, etc., will be given to members upon request to headquarters at Rutland.



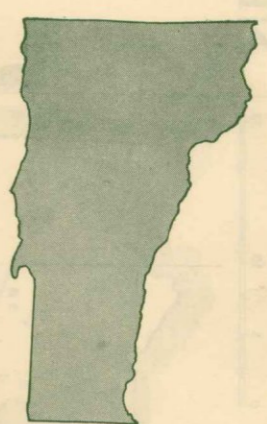
The Vermont Publicity Bureau, a department in the Secretary of State's Office, desires to be of service to all persons interested in Vermont and will gladly furnish information regarding hotels, boarding places, locations for summer homes, tours, recreational attractions and opportunities for hunting and fishing.



The following publications will be furnished: "Vermont Lakes and Mountains"; "Where to Stop When in Vermont," a hotel and resort directory; "Vermont Farms and Summer Homes for Sale"; "Cottages, Camps and Furnished Homes for Rent"; also folders on "The Long Trail"; "Bridle Paths in Vermont"; Road Condition Map Folder (during summer months); and copies of motor vehicle and fish and game laws. Special requests for information not contained in the foregoing are welcomed and will be answered as fully as possible. Address inquiries to State Publicity Bureau, Montpelier, Vermont.

VERMONT

The
Green Mountain
State



A Map Folder

Distributed by
STATE PUBLICITY BUREAU
Montpelier, Vermont

VISIT THE LONG TRAIL

From one end of Vermont to the other the Long Trail follows the sky-line of a two hundred mile mountain range, dipping into valleys, climbing over summits, passing through magnificent forests, sometimes skirting lakes. In all of the United States there is no foot-path like this.

You Can Visit the Trail or one of the Beautiful Summits in a Single Day's Trip from Various Convenient Points.

On either side of the mountain range approach trails leads up to the Long Trail from nearby motor highways. In addition there are highways that cross the Trail itself. One of the through roads, that which climbs through Sherburne Pass, crosses the Trail directly in front of the beautiful tramp center maintained by The Green Mountain Club and known as

LONG TRAIL LODGE

From the Lodge short walks lead to nearby points of beauty and interest, while longer circuits make splendid mountain summits accessible. Along the whole length of the Long Trail shelters are available every few miles for the tramp who enjoys an extended visit in the wilderness.

Trails, shelters and Lodge are maintained for the tramp and the lover of the woods and summits. A pocket guide-book describes the trails and gives information as to shelters, distances, and means of access. The guide-book will be sent on receipt of fifty cents. Address

THE GREEN MOUNTAIN CLUB
Rutland, Vermont.

FISH AND GAME

Fish—Open Seasons

Trout—Brook, Brown, Lock Leven, Steelhead and Rainbow—May 1 to Aug. 15. Exception: Windham County—April 15 to Aug. 1. Golden Trout, Lake Trout and Land-Locked Salmon—May 1 to Sept. 1. Note: See General Laws for exceptions to the above applying to Forest Lake, Big Averill Lake, Little Averill Lake in Essex County; Willoughby Lake in Orleans County; Lake Mitchell in Windsor County.

Legal Lengths and Daily Limits

Trout—Brook, Brown, Lock Leven, Golden—not less than 6 inches in length; not more than 25 fish, nor more than 5 pounds. Steelhead and Rainbow Trout—not less than 10 inches in length; not more than 25 fish, nor more than 5 pounds. Lake Trout and Land-Locked Salmon—not less than 15 inches in length, and not more than 10 pounds. Black Bass—not less than 10 inches in length, and not more than 10 fish. Pickerel—not less than 12 inches in length. Pike Perch—not less than 10 inches in length. (For exceptions see General Laws).

Game—Open Season

When Lawful to Take Same

Deer, one deer with horns not less than three inches long, between November 10th and November 20th, both dates inclusive excepting Sunday. Exception: Deer protected at all times in Franklin County.

Rabbits or hares Oct. 1-March 1
Gray Squirrels Oct. 1-Nov. 1
Moose, Caribou and Elk, protected at all times.

Game Birds—Open Season

Quail—Sept. 15-Dec. 1. Closed season on Ruffed Grouse (Partridge) until Oct. 1, 1931. Woodcock—Oct. 1-Nov. 1. English Snipe, Plover (other than Upland Plover) and shore birds—Sept. 16-Dec. 1. Exception: See General Laws in regard to Joes Pond, Danville, Stone Pond, Shadow Lake in Glover, Caspian Lake in Greensboro, Groton Pond or Lund's Pond in the town of Groton.

License Fees

Resident Fishing—\$1.00. Resident Hunting—\$1.00. Resident Combination Fishing and Hunting—\$1.50. Non-resident Fishing—\$3.15. Refer to reciprocal clause, Sec. 6337. Non-resident Combination Hunting and Fishing—\$10.50. Resident Trapping—\$1.00. Non-resident Trapping—\$50.00. For all exceptions to the above General Laws, see Fish and Game Pamphlet, copy of which will be delivered by Town Clerk when license is obtained, or sent upon request by addressing Department of Fish and Game, Montpelier, Vermont.

GOLF COURSES IN VERMONT

18 Hole Golf Courses

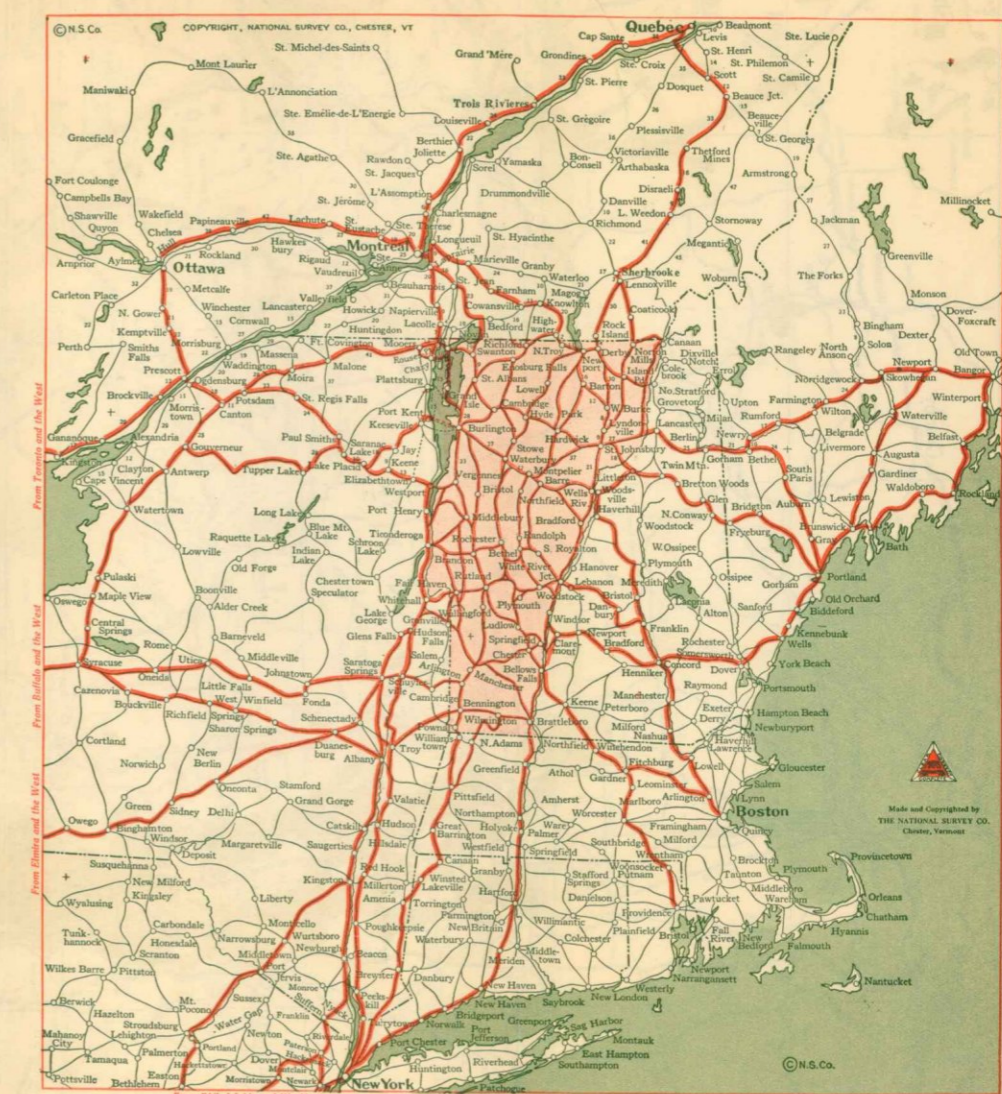
| Name | Location |
|-------------------------|-------------|
| Burlington Country Club | Burlington |
| Lake Morey Club | Fairlee |
| Lyndon Golf Club | Lyndonville |
| Ekwanok Country Club | Manchester |
| Equinox Links Club | Manchester |
| Rochester Country Club | Rochester |
| Rutland Country Club | Rutland |
| Woodstock Country Club | Woodstock |

9 Hole Golf Courses

| | |
|----------------------------|---------------|
| Barre Country Club | Barre |
| Barre Golf Club | Barre |
| Meadow Brook Golf Club | Barre |
| Keewaydin | Barton |
| Vergennes | Basin Harbor |
| Bellows Falls Country Club | Bellows Falls |
| Mt. Anthony Country Club | Bennington |
| Bradford Golf Club | Bradford |
| Brandon Country Club, Inc. | Brandon |
| Brattleboro Country Club | Brattleboro |
| Country Club Estate | Burlington |
| Bomoseen Country Club | Castleton |
| Craftsbury Country Club | Craftsbury |
| Danville Country Club | Danville |
| Dorset Field Club, Inc. | Dorset |
| Kingsbury Farm | Derby |
| Caspian Lake Country Club | Greensboro |
| Hardwick Country Club | Hardwick |
| Lamoille Country Club | Hyde Park |
| Lake Champlain Golf Club | Mallett's Bay |
| Middlebury Country Club | Middlebury |
| Montpelier Country Club | Montpelier |
| Newport Country Club | Newport |
| Orleans Country Club | Orleans |
| Montague Golf Club | Randolph |
| Champlain Club | St. Albans |
| St. Johnsbury Country Club | St. Johnsbury |
| Hyde Manor Golf Club | Sudbury |
| Waterbury Inn Club | Waterbury |
| Wilmington Country Club | Wilmington |
| Hourglass Country Club | Windsor |

**DISTANCES TO VERMONT
POINTS**

| | | | | | | | | | | |
|--------------------|------|------|------|------|------|------|------|------|------|------|
| Albany | 38 | 105 | 81 | 162 | 177 | 246 | 94 | 190 | 202 | 138 |
| Atlanta | 1180 | 1222 | 1207 | 1304 | 1317 | 1367 | 1236 | 1332 | 1323 | 1261 |
| Baltimore | 376 | 418 | 394 | 500 | 513 | 563 | 432 | 528 | 519 | 457 |
| Bangor | 500 | 484 | 508 | 428 | 389 | 388 | 445 | 425 | 344 | 445 |
| Bellows Falls | 67 | 24 | 120 | 97 | 147 | 52 | 148 | 103 | 39 | 39 |
| Bennington | 67 | 43 | 126 | 126 | 185 | 58 | 154 | 164 | 100 | |
| Binghamton | 166 | 233 | 209 | 298 | 313 | 384 | 230 | 326 | 330 | 266 |
| Boston | 160 | 111 | 107 | 231 | 198 | 224 | 163 | 259 | 180 | 140 |
| Brattleboro | 43 | 24 | 141 | 121 | 177 | 76 | 172 | 127 | 63 | |
| Bretton Woods | 178 | 117 | 141 | 118 | 79 | 78 | 123 | 115 | 34 | 78 |
| Buffalo | 326 | 393 | 369 | 414 | 429 | 500 | 346 | 442 | 474 | 391 |
| Burlington | 126 | 120 | 144 | 39 | 77 | 68 | 28 | 44 | 84 | 97 |
| Chicago | 919 | 986 | 962 | 1007 | 1022 | 1093 | 939 | 1035 | 1067 | 984 |
| Cincinnati | 816 | 883 | 859 | 942 | 957 | 1026 | 872 | 968 | 980 | 916 |
| Cleveland | 523 | 590 | 566 | 611 | 626 | 697 | 543 | 639 | 671 | 588 |
| Columbus | 686 | 753 | 720 | 803 | 818 | 887 | 742 | 838 | 850 | 786 |
| Kansas City | 1090 | 1073 | 1027 | 1117 | 1116 | 1166 | 1016 | 1121 | 1066 | 966 |
| Detroit | 525 | 592 | 568 | 613 | 628 | 709 | 545 | 641 | 673 | 590 |
| Harrisburg | 298 | 365 | 341 | 422 | 437 | 506 | 354 | 450 | 462 | 398 |
| Hartford | 111 | 108 | 84 | 221 | 205 | 255 | 153 | 249 | 257 | 247 |
| Indianapolis | 864 | 931 | 907 | 990 | 1005 | 1074 | 920 | 1016 | 1028 | 964 |
| Jacksonville | 1300 | 1342 | 1318 | 1424 | 1437 | 1497 | 1356 | 1452 | 1443 | 1381 |
| Kansas City | 1406 | 1473 | 1449 | 1532 | 1547 | 1616 | 1462 | 1558 | 1570 | 1506 |
| Los Angeles | 3993 | 3462 | 3438 | 3521 | 3536 | 3605 | 3451 | 3547 | 3559 | 3495 |
| Montpelier | 126 | 97 | 121 | 39 | 63 | 69 | 64 | 38 | 58 | |
| Montreal | 227 | 221 | 245 | 101 | 140 | 135 | 169 | 73 | 154 | 198 |
| New Haven | 135 | 145 | 121 | 261 | 242 | 292 | 193 | 289 | 294 | 284 |
| New Orleans | 1731 | 1773 | 1758 | 1855 | 1868 | 1918 | 1787 | 1883 | 1874 | 1812 |
| New York | 196 | 218 | 197 | 322 | 315 | 365 | 254 | 350 | 321 | 257 |
| Newport | 185 | 153 | 177 | 90 | 63 | 63 | 128 | 55 | 44 | 112 |
| Ottawa | 352 | 346 | 370 | 236 | 265 | 260 | 294 | 198 | 279 | 323 |
| Philadelphia | 270 | 312 | 288 | 394 | 407 | 457 | 326 | 422 | 413 | 351 |
| Pittsburgh | 496 | 563 | 539 | 622 | 637 | 706 | 552 | 648 | 660 | 596 |
| Portland, Me. | 209 | 107 | 166 | 214 | 176 | 175 | 203 | 241 | 139 | 159 |
| Providence | 166 | 127 | 127 | 247 | 223 | 273 | 179 | 275 | 229 | 165 |
| Quebec | 397 | 327 | 369 | 264 | 256 | 185 | 339 | 236 | 224 | 288 |
| Richmond | 534 | 576 | 552 | 638 | 671 | 721 | 590 | 686 | 677 | 615 |
| Rochester | 271 | 238 | 214 | 359 | 374 | 445 | 291 | 387 | 411 | 336 |
| San Francisco | 2938 | 3005 | 2981 | 3026 | 3041 | 3112 | 2958 | 3054 | 3086 | 3003 |
| St. Albans | 154 | 148 | 172 | 39 | 65 | 55 | 96 | 81 | 123 | |
| St. Johnsbury | 164 | 103 | 127 | 84 | 38 | 44 | 111 | 81 | 64 | 64 |
| St. Louis | 1109 | 1176 | 1152 | 1235 | 1250 | 1319 | 1165 | 1261 | 1273 | 1209 |
| Saranac Lake | 196 | 190 | 214 | 120 | 159 | 210 | 138 | 148 | 204 | 183 |
| Saratoga | 223 | 280 | 266 | 355 | 370 | 441 | 287 | 383 | 387 | 323 |
| Seattle | 3190 | 3257 | 3233 | 3278 | 3293 | 3364 | 3210 | 3306 | 3338 | 3255 |
| Sherbrooke | 254 | 184 | 208 | 132 | 113 | 42 | 196 | 104 | 81 | 145 |
| Springfield, Mass. | 92 | 82 | 28 | 107 | 129 | 134 | 230 | 185 | 121 | |
| Syracuse | 170 | 237 | 213 | 258 | 273 | 344 | 190 | 286 | 318 | 235 |
| Toronto | 570 | 575 | 599 | 455 | 494 | 489 | 523 | 427 | 508 | 552 |
| Washington | 416 | 458 | 434 | 540 | 553 | 603 | 472 | 568 | 559 | 497 |
| White River Jct. | 100 | 39 | 63 | 97 | 58 | 112 | 45 | 123 | 64 | |
| Worcester | 123 | 84 | 84 | 204 | 181 | 231 | 136 | 232 | 187 | 123 |

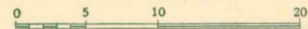


A Map of NEW HAMPSHIRE and VERMONT -1930-

Issued jointly by the
NEW HAMPSHIRE
BOARD OF PUBLICITY
CONCORD, N. H.

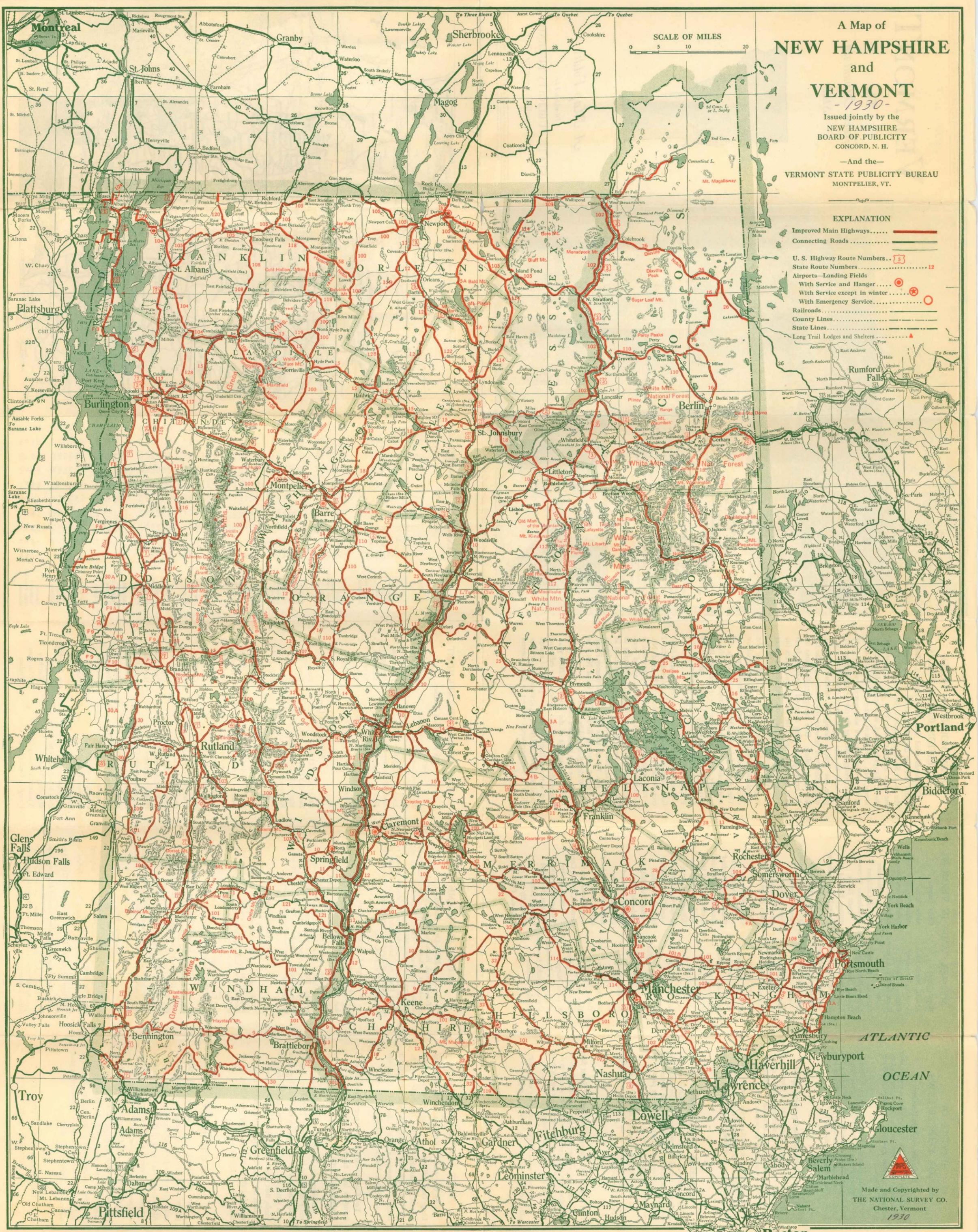
—And the—
VERMONT STATE PUBLICITY BUREAU
MONTPELIER, VT.

SCALE OF MILES



EXPLANATION

- Improved Main Highways.....
- Connecting Roads.....
- U. S. Highway Route Numbers.....
- State Route Numbers.....
- Airports—Landing Fields
With Service and Hanger.....
- With Service except in winter
With Emergency Service.....
- Railroads.....
- County Lines.....
- State Lines.....
- Long Trail Lodges and Shelters.....



ATLANTIC
OCEAN

Made and Copyrighted by
THE NATIONAL SURVEY CO.
Chester, Vermont
1930

Boston

**SYNOPSIS OF
MOTOR VEHICLE LAWS**

Registration—Non-Resident

Under the Vermont law a non-resident is exempt from registration while in this state as a visitor, provided the state of his residence grants the same reciprocity to residents of Vermont.

If under the agreement of reciprocity, a non-resident desires to operate in this state for a longer period than the agreement permits, he may secure registration for a four months' period dating from his arrival in the state for a fee equal to one half the resident fee.

Careless or Negligent Operators; Speed

The laws of Vermont provide that a motor vehicle shall not be operated on a public highway in a careless or negligent manner, nor in a manner to endanger the safety, life, or property of any person.

Cities and incorporated villages have authority to make special regulations relative to speed of motor vehicles provided such limit is fixed at not less than twenty miles per hour.

Accidents; Duties of Operator

The operator of any motor vehicle involved in an accident must immediately stop and give his name, residence, license number and the name of the owner of the motor vehicle then under his control, to the party whose person or property is injured.

The operator is further required to report the accident, within twenty-four hours, to the Commissioner of Motor Vehicles at Montpelier, Vt.

Not Over Three Persons Allowed on Front Seat

A person must not operate a motor vehicle in Vermont, with more than three persons on the front seat, or in the front or driving compartment of a motor vehicle occupied by the operator of such vehicle.

For any information relative to the motor vehicle laws, address the Motor Vehicle Department, Montpelier, Vermont.

SUMMER CAMPS IN VERMONT

Boys' Camps

- Abnaki, North Hero
- Arrowhead, Poultney
- Billings, Thetford
- Brook Farm, East Dummerston
- Cheemauna, Sharon
- Dingley Dell, South Hero
- Duncan, Derby
- Duncan, Peru
- Eagle Mountain, Milton
- Enajerog, Wilmington
- Gaysville, Gaysville
- Green Mountain, Hubbardston
- Iroquois, Colchester
- Kaaterskill, Pownal
- Kadimah, Milton
- Kahagan, Woodbury
- Kawawin, Wallingford
- Keewaydin, Salisbury
- Kill Kare, St. Albans
- Kill Kare, Tutoring
- Kokosing, Strafford
- Lanakila, Fairlee
- Maquam, Swanton
- Neperan, Newport
- Owl, Peacham
- Passumpsic, West Fairlee
- Plymouth, Plymouth
- St. Ann's, Isle La Motte
- Sangamon, Pitsford
- Shelter, Marlboro
- Shenewis, Barton
- Tawasi, Sherburne
- Twin Lakes, Hubbardton
- Waubanake, Brandon
- Waycees, Morgan
- Winape, East Charleston
- Winneshawauka, Lunenburg
- Wynona, Fairlee
- Zelenko, Salisbury

Girls' Camps

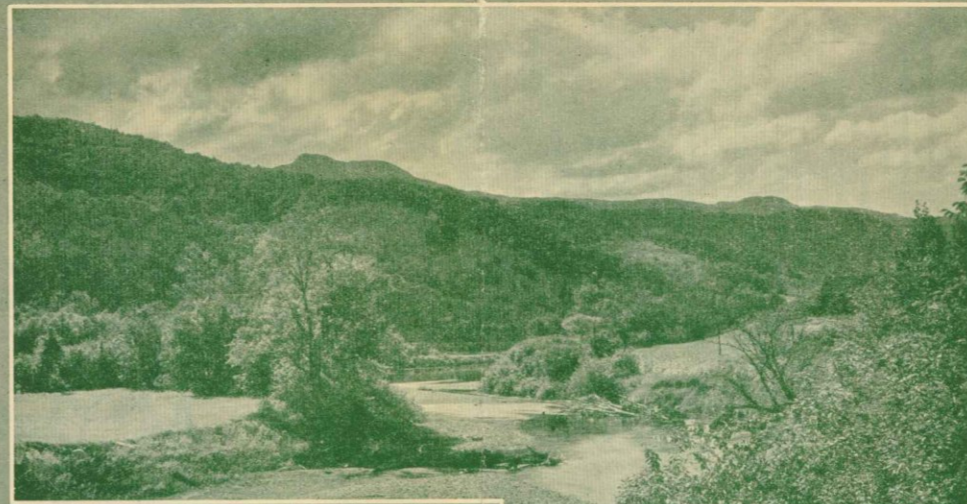
- Aloha, Fairlee
- Aloha Hive, West Fairlee
- Arden, Dummerston
- Aurora, Colchester
- Awancee, Hubbardton
- Barnard, Colchester
- Beenadeewin Wigwam, South Fairlee
- Billings, Thetford
- Brown Ledge, Colchester
- Carmelia, Milton
- Dunmore, Salisbury
- Ecole Champlain, Ferrisburg
- Farwell, Newbury
- Gaysville, Gaysville
- Green Mountain, Arlington
- Green Mountain, Hubbardton
- Green Mountain, West Dummerston
- Hanoum Hill, Thetford
- Hanoum Lake, Thetford
- Hochelago, South Hero
- Ken Jockete, South Strafford
- Killooleet, Hancock
- Kiniya, Colchester
- Kinni-Kinnio, Poultney
- Lochean, Thetford
- Marbury, Ferrisburg
- Naidni, Salisbury
- Neshobe, Thetford
- Quinibeck, Fairlee
- Songadeewin, Westmore
- Sunrise, Benson
- Teela Wooker, Roxbury
- Vermont Camp for Crippled Children, Goshen
- Waubanake, Brandon
- Wilakowi, Northfield
- Wynona, Fairlee
- Wyoda, Ely
- Ziptekana, Colchester

**GREEN MOUNTAIN HORSE
ASSOCIATION BRIDLE PATHS**

The roads used for these so-called "Bridle Paths" are the dirt roads which run throughout the entire State, generally higher in the hills than the main motor roads. They are soft surfaced, shady, always beautiful, and very seldom used by motor cars. At present, there are over 400 miles of these roads marked with stops arranged every ten to twenty miles for the riders' convenience for luncheon or over night. It is planned to complete the system during the summer of 1930, when there will be over 700 miles available for horseback riding. One can generally count on the bridle paths being in good condition from May 1st to November 1st, and in some places for a longer season. The Association marks the routes with white arrows, with the letters "G. M. H. A." in green, and issues a guide book giving the names of farmhouses, inns and hotels where riders and horses will find comfortable quarters. The object of the Association is to encourage the raising and use of horses in Vermont. The Headquarters of the Association are at Rutland; Pres., Mrs. William H. Field, Mendon; Brattleboro Section, Dr. Grace Burnett; Brandon Section, Mr. E. C. Rockwell.

Route No. 1 runs from the Massachusetts State line south of Bennington to St. Albans; No. 2 crosses the state from Brattleboro to Rutland; No. 3 runs from Brattleboro to Bennington; No. 4 from the Massachusetts State line south of Brattleboro to Lake Willoughby; No. 5 begins at Westminster near Walpole, N. H., and ends at Arlington; No. 6 goes from Windsor to Poultney; No. 7 from Lake Fairlee to Chimney Point, and No. 8 connects Routes No. 4 and No. 1 at Lake Willoughby and St. Albans.

Anyone may become a member of the Association upon payment of the dues of \$1.00 a year. The guide book, maps and all necessary information as to condition of routes, expenses of a trip, rental of horses, lodgings, equipment, etc., will be given to members upon request to headquarters at Rutland.



The Vermont Publicity Bureau, a department in the Secretary of State's Office, desires to be of service to all persons interested in Vermont and will gladly furnish information regarding hotels, boarding places, locations for summer homes, tours, recreational attractions and opportunities for hunting and fishing.

The following publications will be furnished: "Vermont Lakes and Mountains"; "Where to Stop When in Vermont," a hotel and resort directory; "Vermont Farms and Summer Homes for Sale"; "Cottages, Camps and Furnished Homes for Rent"; also folders on "The Long Trail"; "Bridle Paths in Vermont"; Road Condition Map Folder (during summer months); and copies of motor vehicle and fish and game laws. Special requests for information not contained in the foregoing are welcomed and will be answered as fully as possible. Address inquiries to

State Publicity Bureau, Montpelier, Vermont.



1930 per V.P.C. to E.F.B.
May 6, 1928
VERMONT
The
Green Mountain
State



A Map Folder

Distributed by
STATE PUBLICITY BUREAU
Montpelier, Vermont

PRODUCED BY THE NATIONAL SURVEY, CHESTER, VERMONT

VISIT THE LONG TRAIL

From one end of Vermont to the other the Long Trail follows the sky-line of a two hundred mile mountain range, dipping into valleys, climbing over summits, passing through magnificent forests, sometimes skirting lakes. In all of the United States there is no foot-path like this.

You Can Visit the Trail or one of the Beautiful Summits in a Single Day's Trip from Various Convenient Points.

On either side of the mountain range approach trails leads up to the Long Trail from nearby motor highways. In addition there are highways that cross the Trail itself. One of the through roads, that which climbs through Sherburne Pass, crosses the Trail directly in front of the beautiful tramping center maintained by The Green Mountain Club and known as

LONG TRAIL LODGE

From the Lodge short walks lead to nearby points of beauty and interest, while longer circuits make splendid mountain summits accessible. Along the whole length of the Long Trail shelters are available every few miles for the trampler who enjoys an extended visit in the wilderness.

Trails, shelters and Lodge are maintained for the trampler and the lover of the woods and summits. A pocket guide-book describes the trails and gives information as to shelters, distances, and means of access. The guide-book will be sent on receipt of fifty cents. Address

THE GREEN MOUNTAIN CLUB
Rutland, Vermont.

FISH AND GAME

Fish—Open Seasons

Trout—Brook, Brown, Lock Leven, Steelhead and Rainbow—May 1 to Aug. 15. Exception: Windham County—April 15 to Aug. 1. Golden Trout, Lake Trout and Land-Locked Salmon—May 1 to Sept. 1. Note: See General Laws for exceptions to the above applying to Forest Lake, Big Averill Lake, Little Averill Lake in Essex County; Willoughby Lake in Orleans County; Lake Mitchell in Windsor County.

Legal Lengths and Daily Limits

Trout—Brook, Brown, Lock Leven, Golden—not less than 6 inches in length; not more than 25 fish, nor more than 5 pounds. Steelhead and Rainbow Trout—not less than 10 inches in length; not more than 25 fish, nor more than 5 pounds. Lake Trout and Land-Locked Salmon—not less than 15 inches in length, and not more than 10 pounds. Black Bass—not less than 10 inches in length, and not more than 10 fish. Pickerel—not less than 12 inches in length. Pike Perch—not less than 10 inches in length. (For exceptions see General Laws).

Game—Open Season

When Lawful to Take Same

Deer, one deer with horns not less than three inches long, between November 10th and November 20th, both dates inclusive excepting Sunday. Exception: Deer protected at all times in Franklin County.
Rabbits or hares..... Oct. 1-March 1
Gray Squirrels..... Oct. 1-Nov. 1
Moose, Caribou and Elk, protected at all times.

Game Birds—Open Season

Quail—Sept. 15-Dec. 1. Closed season on Ruffed Grouse (Partridge) until Oct. 1, 1931. Woodcock—Oct. 1-Nov. 1. English Snipe, Plover (other than Upland Plover) and shore birds—Sept. 16-Dec. 1. Exception: See General Laws in regard to Joos Pond, Danville, Stone Pond, Shadow Lake in Glover, Caspian Lake in Greensboro, Groton Pond or Lund's Pond in the town of Groton.

License Fees

Resident Fishing—\$1.00. Resident Hunting—\$1.00. Resident Combination Fishing and Hunting—\$1.50. Non-resident Fishing—\$3.15. Refer to reciprocal clause, Sec. 6337.
Non-resident Combination Hunting and Fishing—\$10.50.
Resident Trapping—\$1.00. Non-resident Trapping—\$50.00.
For all exceptions to the above General Laws, see Fish and Game Pamphlet, copy of which will be delivered by Town Clerk when license is obtained, or sent upon request by addressing Department of Fish and Game, Montpelier, Vermont.

GOLF COURSES IN VERMONT

18 Hole Golf Courses

| Name | Location |
|-------------------------|-------------|
| Burlington Country Club | Burlington |
| Lake Morey Club | Fairlee |
| Lyndon Golf Club | Lyndonville |
| Ekwanok Country Club | Manchester |
| Equinox Links Club | Manchester |
| Rochester Country Club | Rochester |
| Rutland Country Club | Rutland |
| Woodstock Country Club | Woodstock |

9 Hole Golf Courses

| | |
|----------------------------|---------------|
| Barre Country Club | Barre |
| Barre Golf Club | Barre |
| Meadow Brook Golf Club | Barre |
| Keewaydin | Barton |
| Vergennes | Basin Harbor |
| Bellows Falls Country Club | Bellows Falls |
| Mt. Anthony Country Club | Bennington |
| Bradford Golf Club | Bradford |
| Brandon Country Club, Inc. | Brandon |
| Brattleboro Country Club | Brattleboro |
| Country Club Estate | Burlington |
| Bomoseen Country Club | Castleton |
| Craftsbury Country Club | Craftsbury |
| Danville Country Club | Danville |
| Dorset Field Club, Inc. | Dorset |
| Kingsbury Farm | Derby |
| Caspian Lake Country Club | Greensboro |
| Hardwick Country Club | Hardwick |
| Lamoille Country Club | Hyde Park |
| Lake Champlain Golf Club | Mallett's Bay |
| Middlebury Country Club | Middlebury |
| Montpelier Country Club | Montpelier |
| Newport Country Club | Newport |
| Orleans Country Club | Orleans |
| Montague Golf Club | Randolph |
| Champlain Club | St. Albans |
| St. Johnsbury Country Club | St. Johnsbury |
| Hyde Manor Golf Club | Sudbury |
| Waterbury Inn Club | Waterbury |
| Wilmington Country Club | Wilmington |
| Hourglass Country Club | Windsor |

**DISTANCES TO VERMONT
POINTS**

| | Bennington | Bellows Falls | Brattleboro | Burlington | Montpelier | Newport | Rutland | St. Albans | St. Johnsbury | White River Junction |
|--------------------|------------|---------------|-------------|------------|------------|---------|---------|------------|---------------|----------------------|
| Albany | 38 | 105 | 81 | 162 | 177 | 246 | 94 | 190 | 202 | 138 |
| Atlanta | 1180 | 1222 | 1207 | 1304 | 1317 | 1367 | 1236 | 1332 | 1323 | 1261 |
| Baltimore | 376 | 418 | 394 | 500 | 513 | 563 | 432 | 528 | 519 | 457 |
| Bangor | 500 | 484 | 508 | 428 | 389 | 388 | 445 | 425 | 344 | 445 |
| Bellows Falls | 67 | | 24 | 120 | 97 | 147 | 52 | 148 | 103 | 39 |
| Bennington | | 67 | 43 | 126 | 126 | 185 | 58 | 154 | 164 | 100 |
| Binghamton | 166 | 233 | 209 | 298 | 313 | 384 | 230 | 326 | 330 | 266 |
| Boston | 160 | 111 | 107 | 231 | 198 | 224 | 163 | 259 | 180 | 140 |
| Brattleboro | 43 | 24 | | 141 | 121 | 177 | 76 | 172 | 127 | 63 |
| Bretton Woods | 178 | 117 | 141 | 118 | 79 | 78 | 123 | 115 | 34 | 78 |
| Buffalo | 326 | 393 | 369 | 414 | 429 | 500 | 346 | 442 | 474 | 391 |
| Burlington | 126 | 120 | 144 | | 39 | 77 | 68 | 28 | 84 | 97 |
| Chicago | 919 | 986 | 962 | 1007 | 1022 | 1093 | 939 | 1035 | 1067 | 984 |
| Cincinnati | 816 | 883 | 859 | 942 | 957 | 1026 | 872 | 968 | 980 | 916 |
| Cleveland | 864 | 931 | 907 | 990 | 1005 | 1074 | 920 | 1016 | 1028 | 964 |
| Columbus | 1300 | 1342 | 1318 | 1424 | 1437 | 1497 | 1356 | 1452 | 1445 | 1381 |
| Champlain Bridge | 109 | 103 | 127 | 37 | 76 | 116 | 51 | 66 | 121 | 96 |
| Detroit | 525 | 592 | 568 | 613 | 628 | 799 | 545 | 641 | 673 | 590 |
| Harrisburg | 298 | 365 | 341 | 422 | 437 | 506 | 354 | 450 | 462 | 398 |
| Hartford | 111 | 108 | 84 | 221 | 205 | 255 | 153 | 249 | 257 | 247 |
| Indianapolis | 864 | 931 | 907 | 990 | 1005 | 1074 | 920 | 1016 | 1028 | 964 |
| Jacksonville | 1406 | 1473 | 1449 | 1532 | 1547 | 1616 | 1462 | 1558 | 1570 | 1506 |
| Kansas City | 3395 | 3462 | 3438 | 3521 | 3536 | 3605 | 3451 | 3547 | 3559 | 3495 |
| Los Angeles | | | | | | | | | | |
| Montpelier | 126 | 97 | 121 | 39 | | 63 | 69 | 64 | 38 | 58 |
| Montreal | 227 | 221 | 245 | 101 | 140 | 135 | 169 | 73 | 154 | 198 |
| New Haven | 135 | 145 | 121 | 261 | 242 | 292 | 193 | 289 | 294 | 284 |
| New Orleans | 1731 | 1773 | 1758 | 1855 | 1868 | 1918 | 1787 | 1883 | 1874 | 1812 |
| New York | 186 | 218 | 194 | 322 | 315 | 365 | 254 | 351 | 321 | 257 |
| Newport | 185 | 153 | 177 | 90 | 63 | | 128 | 55 | 44 | 112 |
| Ottawa | 352 | 346 | 370 | 226 | 265 | 260 | 294 | 198 | 279 | 323 |
| Philadelphia | 270 | 312 | 288 | 394 | 407 | 457 | 326 | 422 | 413 | 351 |
| Pittsburgh | 496 | 563 | 539 | 622 | 637 | 706 | 552 | 648 | 660 | 596 |
| Portland, Me. | 209 | 170 | 166 | 214 | 176 | 175 | 203 | 211 | 131 | 159 |
| Providence | 166 | 127 | 127 | 247 | 235 | 273 | 179 | 275 | 229 | 165 |
| Quebec | 397 | 327 | 369 | 264 | 256 | 185 | 339 | 236 | 224 | 288 |
| Richmond | 534 | 576 | 552 | 658 | 671 | 721 | 590 | 686 | 677 | 615 |
| Rochester | 271 | 338 | 314 | 359 | 374 | 445 | 291 | 387 | 419 | 336 |
| San Francisco | 2938 | 3005 | 2981 | 3026 | 3041 | 3112 | 2958 | 3054 | 3086 | 3003 |
| St. Albans | 154 | 148 | 172 | 39 | 65 | 55 | 96 | | 81 | 123 |
| St. Johnsbury | 164 | 103 | 127 | 84 | 38 | 44 | | | | 64 |
| St. Louis | 1109 | 1176 | 1152 | 1235 | 1250 | 1319 | 1165 | 1261 | 1273 | 1209 |
| Saranac Lake | 196 | 190 | 214 | 120 | 159 | 210 | 138 | 148 | 204 | 183 |
| Scranton | 223 | 290 | 266 | 355 | 370 | 441 | 287 | 383 | 387 | 323 |
| Seattle | 3190 | 3257 | 3233 | 3278 | 3293 | 3364 | 3210 | 3306 | 3338 | 3255 |
| Sherbrooke | 254 | 184 | 208 | 132 | 113 | 42 | 196 | 104 | 81 | 145 |
| Springfield, Mass. | 92 | 82 | 58 | 202 | 179 | 229 | 134 | 230 | 185 | 121 |
| Syracuse | 170 | 237 | 213 | 258 | 273 | 344 | 190 | 286 | 318 | 235 |
| Toronto | 570 | 575 | 599 | 485 | 494 | 489 | 523 | 427 | 508 | 522 |
| Washington | 416 | 458 | 434 | 540 | 553 | 603 | 472 | 568 | 559 | 497 |
| White River Jct. | 100 | 39 | 63 | 97 | 58 | 112 | 45 | 123 | 64 | |
| Worcester | 123 | 84 | 84 | 204 | 181 | 231 | 136 | 232 | 187 | 123 |

