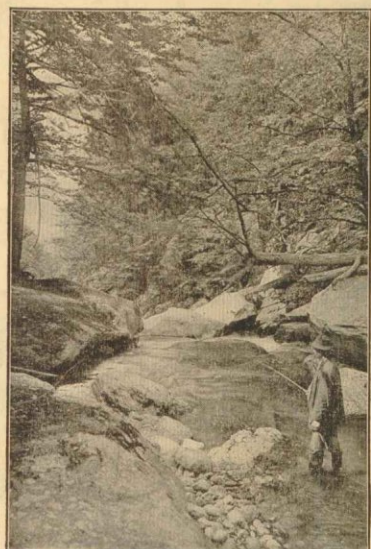


A Map of VERMONT

INDICATING THE PRINCIPAL HIGHWAYS AND RAILROADS OF THE STATE AND ROUTES LEADING THERETO

Issued in 1928 by the
STATE OF VERMONT
 Secretary of State
 Publicity Department
 MONTPELIER · VERMONT



A Mountain Stream in Vermont

Vermont and Vacation

are closely associated in the minds of a steadily increasing number of summer home-seekers and tourists.

Through the center of Vermont, from the northern to the southern border, extends the Green Mountain range, containing approximately one thousand peaks that equal or exceed two thousand feet in height. Vermont contains hundreds of lakes, from Champlain on its western border, more than one hundred miles in length, to pools, hidden in the hills, that reflect their charming mountain settings.

Vermont contains good hotels, large and small, that serve the farm, dairy and maple products that have made the state famous. There are, in this state, abundant opportunities for the location of camps and summer homes, within a day's automobile ride of the great cities of the East.

Vermont outranks every other state in per capita value of dairy products and only three states surpass



A Lake in the Green Mountains

Address inquiries to
VERMONT PUBLICITY BUREAU
 Secretary of State's Office
 MONTPELIER · VERMONT

PRODUCED BY THE NATIONAL SURVEY, CHESTER, VERMONT



A Vermont Cascade

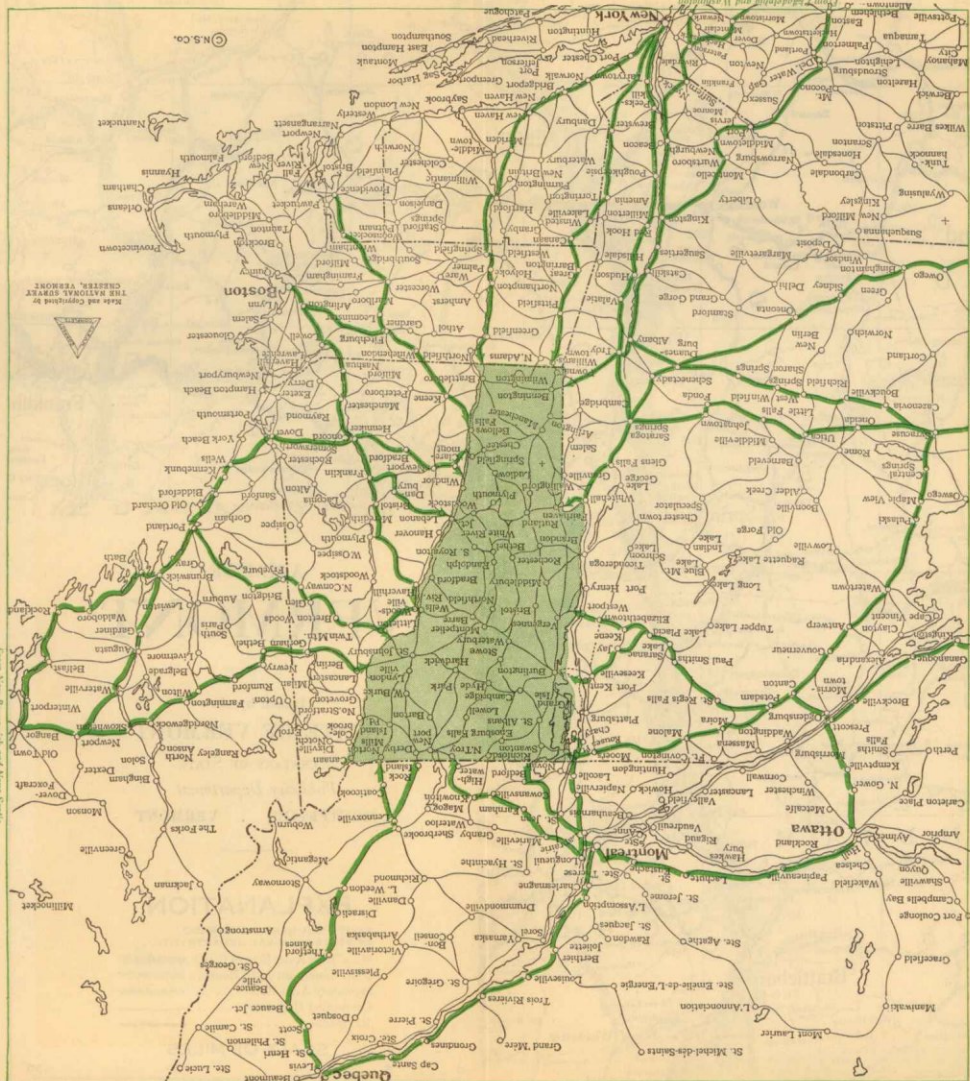
Vermont in percentage of purebred cattle. Vermont makes more than half the maple sugar produced in the United States and leads all other states in the production of maple syrup.

For many years Vermont has ranked near the head of the list in yield per acre of staple crops, largely exceeding the average yield for the United States, and it is famous for its high-grade apples and potatoes.

Vermont ranks first in the production of marble, and monumental granite, and second in the production of slate and talc. With approximately 100 varieties, Vermont produces nearly one-half the marble quarried in the United States and supplies nearly 70 per cent of the monumental and statuary marble. This state furnishes approximately one-half of the monumental granite used in this country.

Vermont is served by some of the largest railroad systems of the United States and Canada. A network of bus lines traverses the State.

Information Bureaus are maintained by the State and by local civic and commercial organizations. The former gladly supplies maps and illustrated booklets on request, and all are prepared to answer specific inquiries for information.



Distances to Vermont Points

New York to	181 miles
Burlington (via Pittsfield, Mass.)	218 miles
St. Albans	306 miles
Burlington	337 miles
Montpelier	346 miles
St. Johnsbury	346 miles
Newport	397 miles
Boston to	155 miles
Burlington (via Williamstown, Mass.)	100 miles
Burlington (via Bellows Falls)	228 miles
St. Albans (via Fitchburg, Mass.)	203 miles
Montpelier	119 miles
Newport	102 miles
Burlington	108 miles
St. Johnsbury	141 miles
Montpelier	141 miles
Burlington	245 miles
Portland, Me., to	133 miles
St. Johnsbury	181 miles
Newport	170 miles
Montpelier	248 miles
Burlington (via St. Johnsbury)	224 miles
Burlington (via Portsmouth, N. H.)	217 miles
Bretton Woods, N. H., to	228 miles
St. Johnsbury	37 miles
Newport	85 miles
Montpelier	74 miles
Burlington	151 miles
Burlington (via Montpelier)	146 miles
Rutland (via White River Jct.)	113 miles
Burlington	187 miles
Saranac Lake, N. Y., to	86 miles
Burlington (via Pittsburg, N. Y., and Cumberland Head Ferry)	105 miles
Rutland (via Titcomb, N. Y.)	119 miles
Burlington	165 miles
Newport (via Rouses Point, N. Y.)	155 miles
St. Johnsbury	125 miles
Montpelier	135 miles
Burlington	231 miles