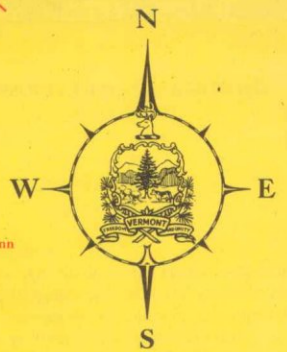


Copyright
The National Survey Co.
Chester, Vermont
Lithographed in U. S. A.

SCALE OF MILES
0 1 2 3 4 5 6 7 8 9 10 11 12 13 14 15



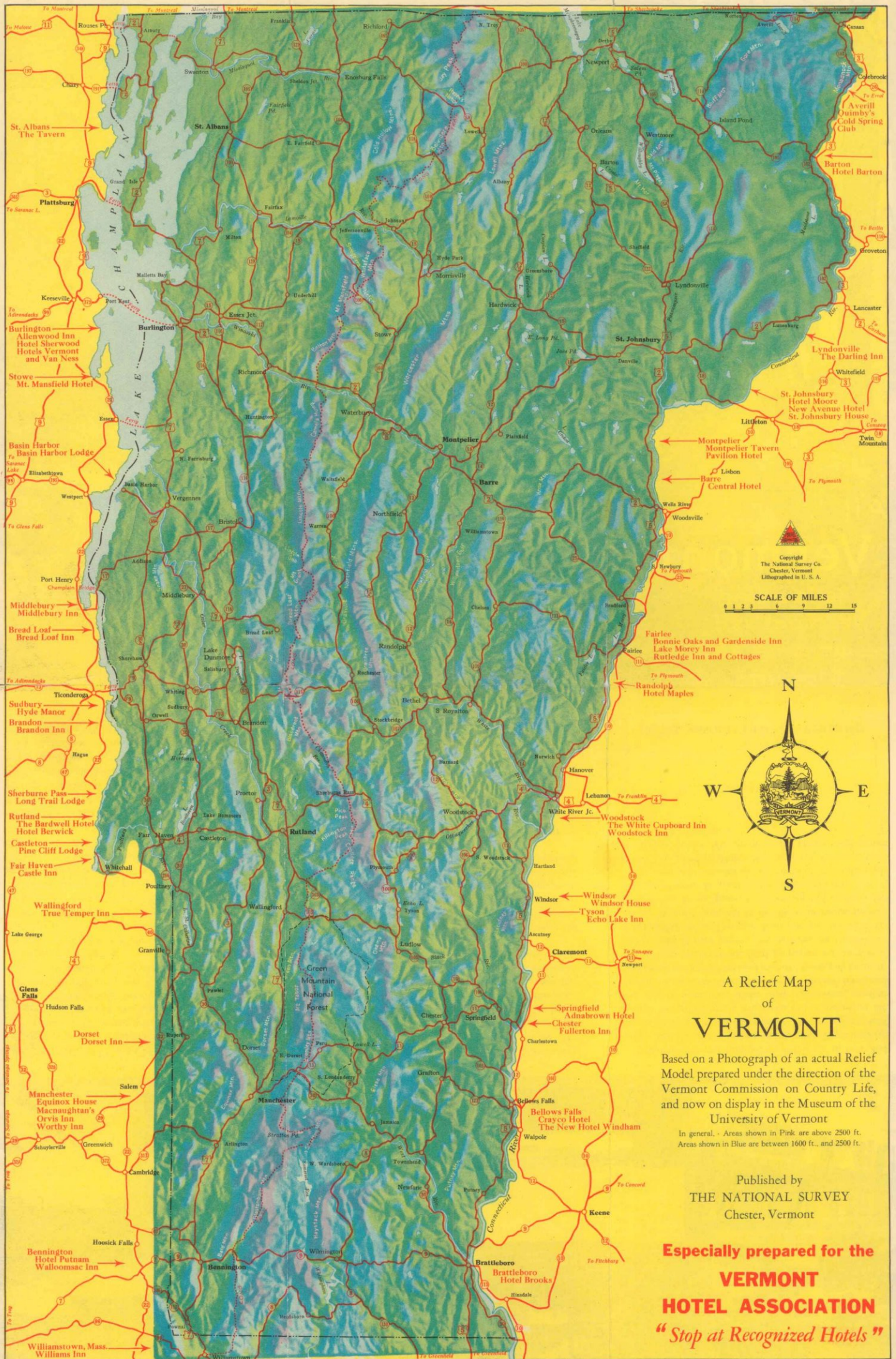
A Relief Map
of
VERMONT

Based on a Photograph of an actual Relief Model prepared under the direction of the Vermont Commission on Country Life, and now on display in the Museum of the University of Vermont

In general - Areas shown in Pink are above 2500 ft.
Areas shown in Blue are between 1600 ft., and 2500 ft.

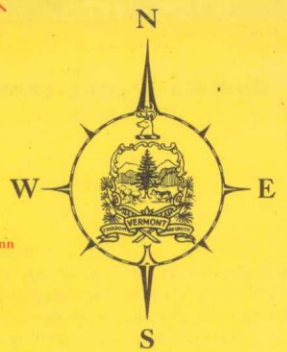
Published by
THE NATIONAL SURVEY
Chester, Vermont

Especially prepared for the
VERMONT
HOTEL ASSOCIATION
"Stop at Recognized Hotels"



Copyright
The National Survey Co.
Chester, Vermont
Lithographed in U. S. A.

SCALE OF MILES
0 1 2 3 4 5 6 7 8 9 10 11 12 13 14 15



A Relief Map
of
VERMONT

Based on a Photograph of an actual Relief Model prepared under the direction of the Vermont Commission on Country Life, and now on display in the Museum of the University of Vermont

In general - Areas shown in Pink are above 2500 ft.
Areas shown in Blue are between 1600 ft., and 2500 ft.

Published by
THE NATIONAL SURVEY
Chester, Vermont

Especially prepared for the
VERMONT
HOTEL ASSOCIATION
"Stop at Recognized Hotels"

EMERSON F. BAKER

1928, per V.P.C. 5/6/68 - 22

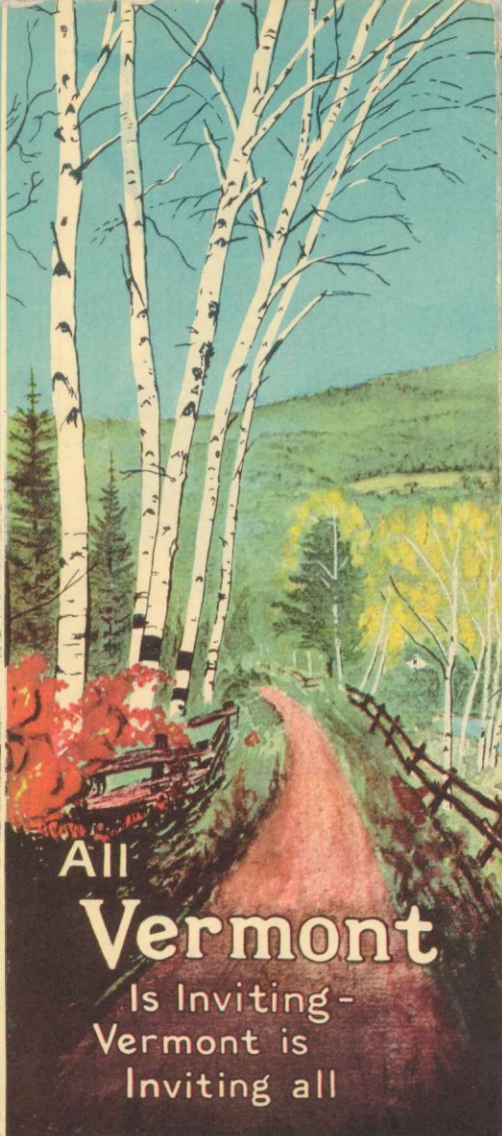
Come to the GREEN MOUNTAINS of VERMONT

The Unspoiled
Vacation Land

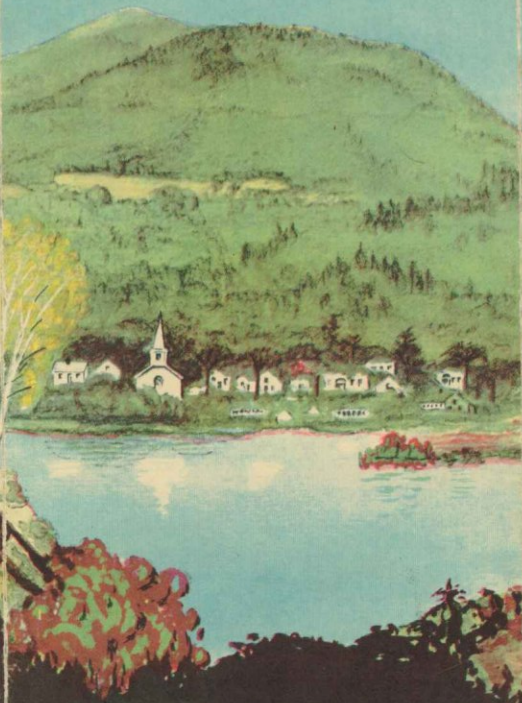
A RELIEF MAP

— of —

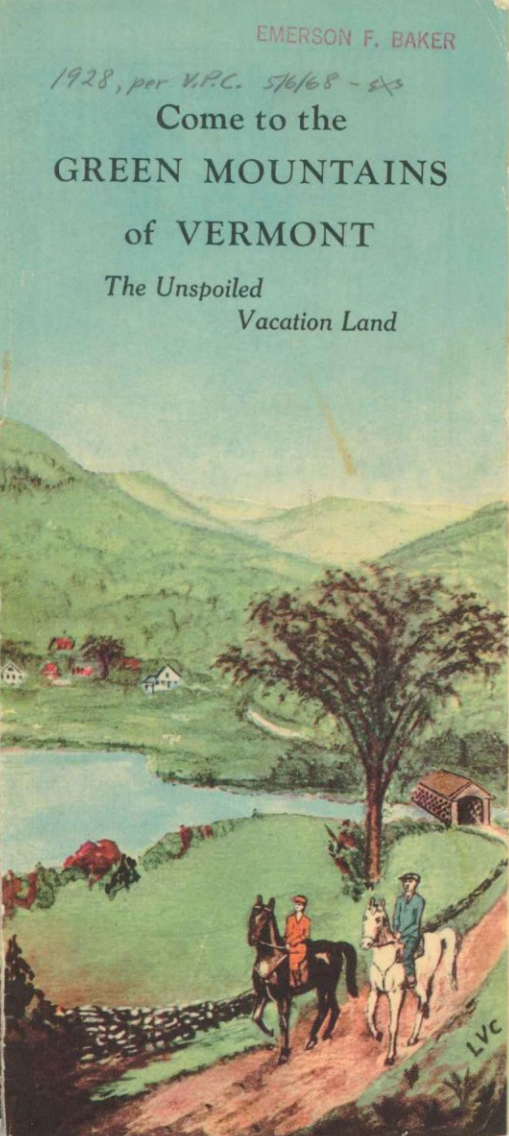
Vermont



All
Vermont
Is Inviting -
Vermont is
Inviting all



THE DARLING INN
"A Gem in the Green"
LYNDONVILLE, VERMONT



HOTEL ASSOCIATION OF VERMONT

For the

Chesler, Vermont

THE NATIONAL SURVEY CO.

Published by

map:—or the publishers.

Moryn Inn, Fairlee, Vt.; or any of the Hotels listed on the
address: The Secretary, Hotel Association of Vermont, Lake
other amusements are plentiful throughout the state.

tenance of moral standards. In this list accommodations will
be found to fit any purse. Golf courses and facilities for
lected and trained, and safeguards are provided for the main-
and property of their guests. Their servants are carefully se-
All of these hotels provide legal protection for the person
wholesome and appetizing food prepared in sanitary kitchens.
equipment and conveniences, good beds with fresh linen, and
best sanitary conditions under State supervision, modern
at these recognized hotels, where you will be assured of the
houses are listed for your convenience. You are urged to stop
within easy distance anywhere in Vermont. Representative
Charming inns and comfortable hotels are to be found

VERMONT

largely concrete.

All of the routes featured on this map are graded and im-
proved, the heaviest traveled roads being hard surfaced,

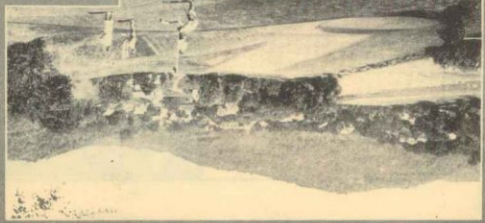
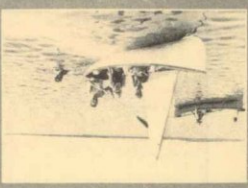
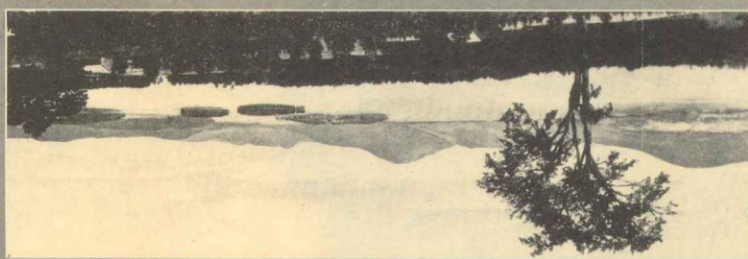
tion.
reached over splendid trunk line highways from any direc-
center of the greatest resort regions of the East, and is easily
sand Island region on the west, Vermont is the geographical
tains and Maine on the east, the Adirondacks and the Thou-
Montreal and Quebec region on the north, the White Moun-
Sited midway between the Berkshires on the south, the
the Connecticut on the east.

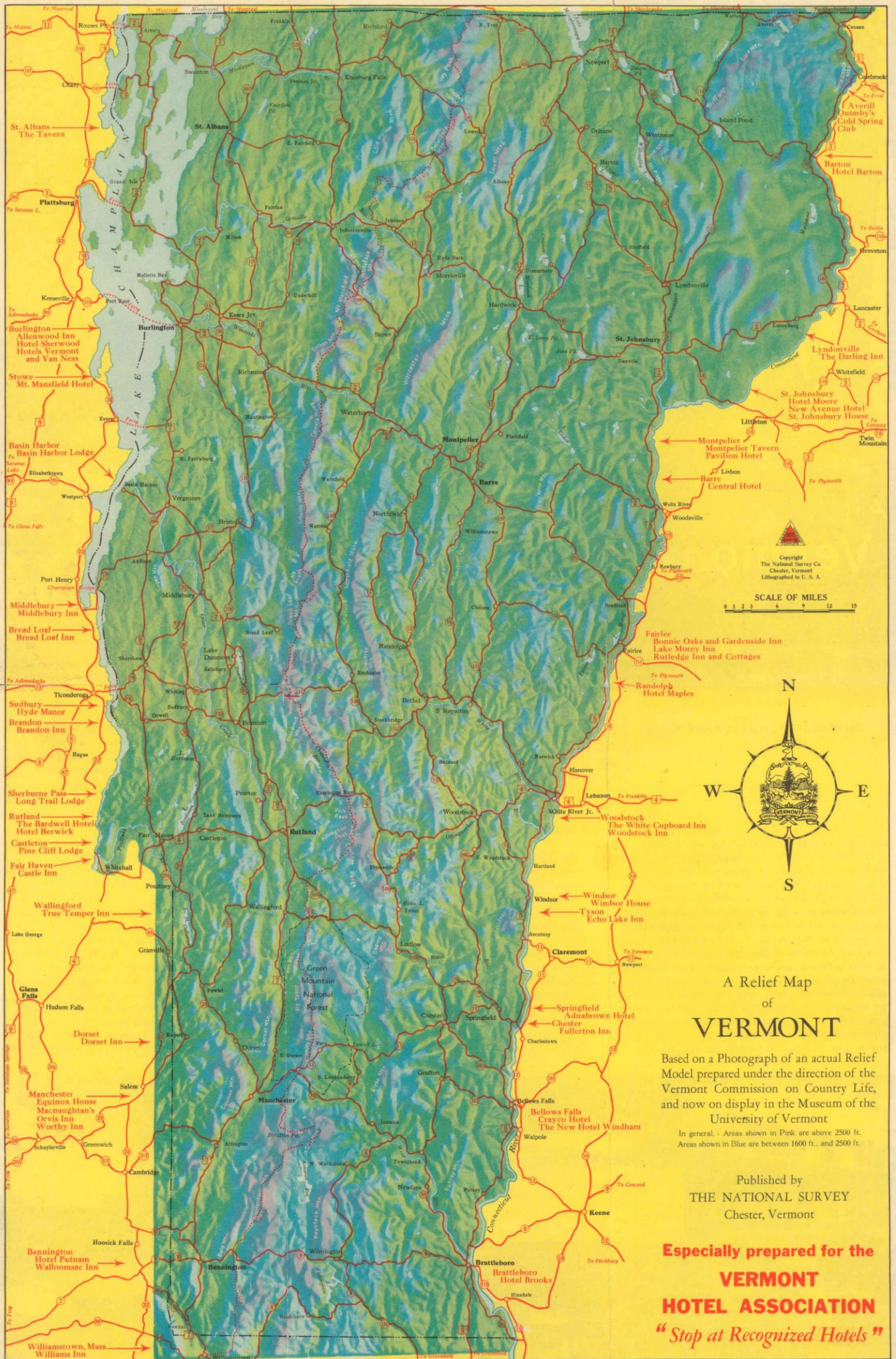
them all, and Killington, Stratton, Tabor, Bread Loaf, Camels
Hamp, Jay Peak and a host of others—all connected by "The
Long Trail" of the Green Mountain Club, a footpath through
the wilderness, three hundred miles long, but only an hour's
hike from civilization on either side. Not all the great peaks
are in the central ridges. Others rise with equal impressiveness
even to the very borders of the state—the Taconics on
the west, Mt. Ascutney, Burke Mountain and others close to

center of the state. Here is found Mt. Mansfield, highest of
The mightiest ranges run north and south throughout the
near at hand.

Adirondacks in the background and Green Mountains ever
the largest of them all, may be skirted for a hundred miles,
flecting virgin spruces, always sparkling clear. Champlain,
lakes nestle here and there, some large, some small, often re-
historical monuments recall Vermont's heroic past. Lovely
reminiscent of the days of the Green Mountain Boys, and
Colonial farmhouses with old-fashioned flower gardens are
on amid a labyrinth of infinite and unending beauty. Quiet
row mysterious mountain passes, these roads wind on and
streams, but frequently climbing by easy stages to lofty
heights with distant views unfolding, or again through nar-
Usually in the valleys, following the clear, swift, rocky
run hundreds of miles of improved roads.

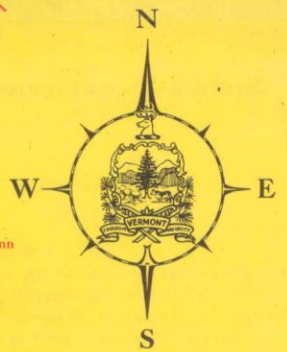
nook and cranny of the state, and in and out among them
scenes of enchantment. Their ramifications extend to every
ticing one on and on to ever-changing and never-ending
rock masses to awe and repel, but covered with
and mountains of unparalleled beauty,—not barren
is traversed throughout her entire length by hills
ERMONT "The Green Mountain State"





Copyright
The National Survey Co.
Chester, Vermont
Lithographed in U. S. A.

SCALE OF MILES
0 1 2 3 4 5 6 7 8 9 10 11 12 13 14 15



A Relief Map
of
VERMONT

Based on a Photograph of an actual Relief Model prepared under the direction of the Vermont Commission on Country Life, and now on display in the Museum of the University of Vermont

In general - Areas shown in Pink are above 2500 ft.
Areas shown in Blue are between 1600 ft., and 2500 ft.

Published by
THE NATIONAL SURVEY
Chester, Vermont

Especially prepared for the
VERMONT
HOTEL ASSOCIATION
"Stop at Recognized Hotels"

EMERSON F. BAKER

1928, per V.P.C. 5/6/68 - 22

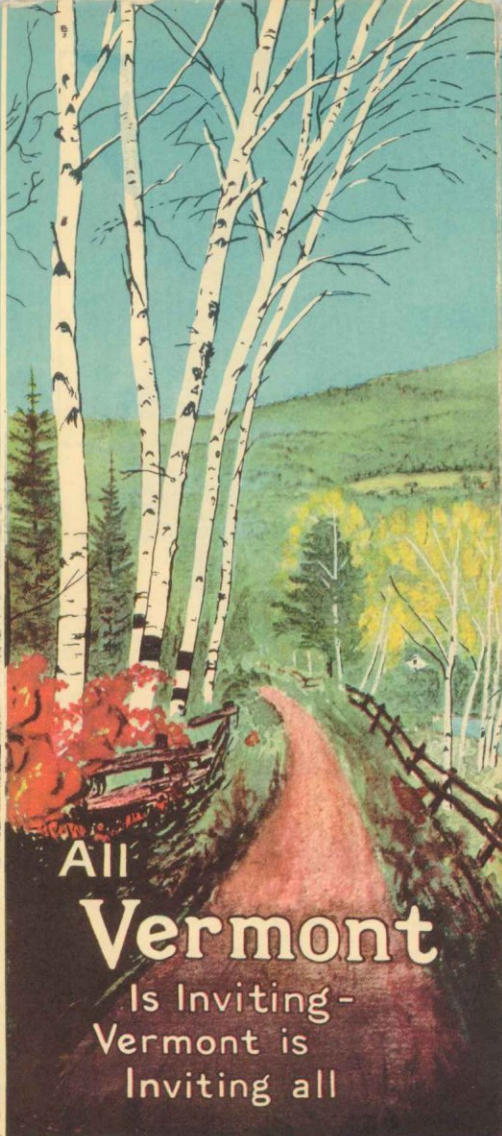
Come to the GREEN MOUNTAINS of VERMONT

The Unspoiled
Vacation Land

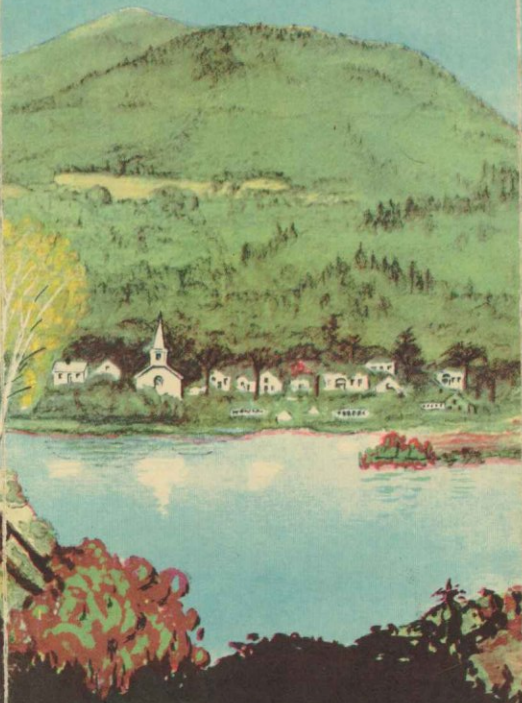
A RELIEF MAP

— of —

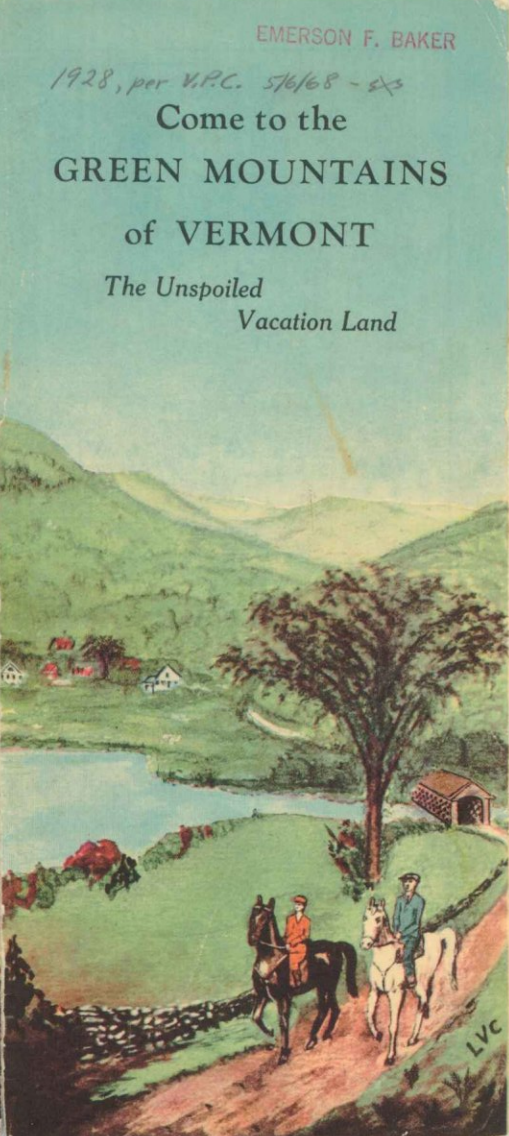
Vermont



All
Vermont
Is Inviting -
Vermont is
Inviting all



THE DARLING INN
"A Gem in the Green"
LYNDONVILLE, VERMONT



HOTEL ASSOCIATION OF VERMONT

For the

Chester, Vermont

THE NATIONAL SURVEY CO.

Published by

map:—or the publishers.

Mory Inn, Fairlee, Vt.; or any of the Hotels listed on the
address: The Secretary, Hotel Association of Vermont, Lake
other amusements are plentiful throughout the state.

tenance of moral standards. In this list accommodations will
be found to fit any purse. Golf courses and facilities for
lected and trained, and safeguards are provided for the main-
and property of their guests. Their servants are carefully se-
All of these hotels provide legal protection for the person
wholesome and appetizing food prepared in sanitary kitchens.
equipment and conveniences, good beds with fresh linen, and
best sanitary conditions under State supervision, modern
at these recognized hotels, where you will be assured of the
houses are listed for your convenience. You are urged to stop
within easy distance anywhere in Vermont. Representative
Charming inns and comfortable hotels are to be found

VERMONT

largely concrete.

All of the routes featured on this map are graded and im-
proved, the heaviest traveled roads being hard surfaced,
tion.

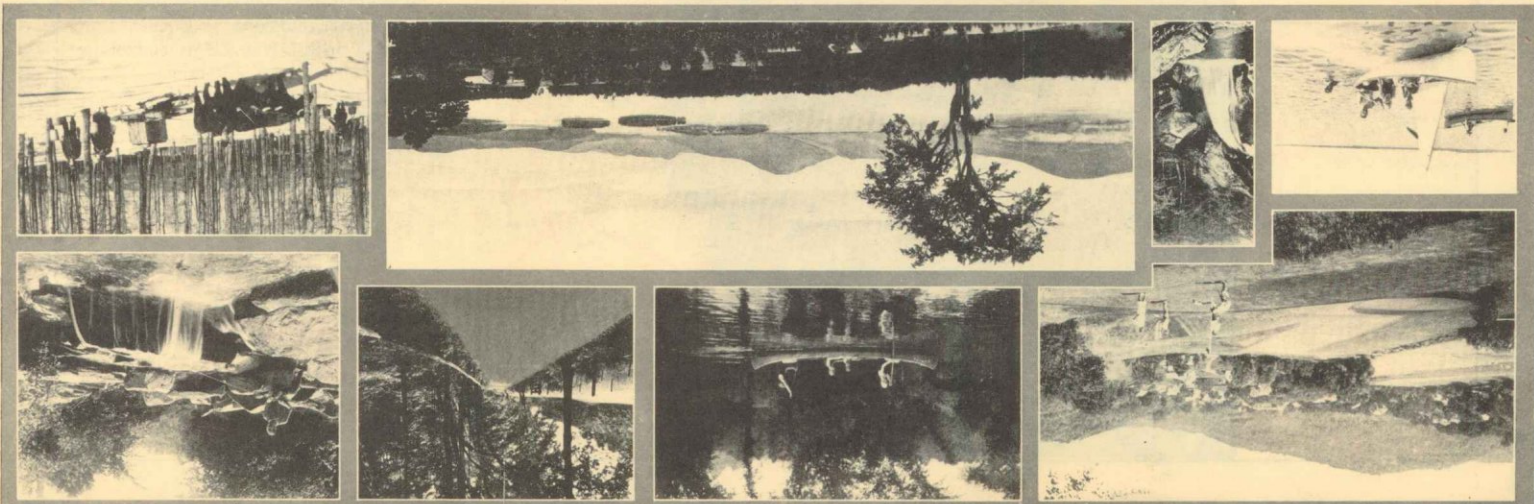
reached over splendid trunk line highways from any direc-
center of the greatest resort regions of the East, and is easily
sand Island region on the west, Vermont is the geographical
tains and Maine on the east, the Adirondacks and the Thou-
Montreal and Quebec region on the north, the White Moun-
Sited midway between the Berkshires on the south, the
the Connecticut on the east.

them all, and Killington, Stratton, Tabor, Bread Loaf, Camels
Hamp, Jay Peak and a host of others—all connected by "The
Long Trail" of the Green Mountain Club, a footpath through
the wilderness, three hundred miles long, but only an hour's
hike from civilization on either side. Not all the great peaks
are in the central ridges. Others rise with equal impressiveness
even to the very borders of the state—the Taconics on
the west, Mt. Ascutney, Burke Mountain and others close to

center of the state. Here is found Mt. Mansfield, highest of
The mightiest ranges run north and south throughout the
near at hand.

Adirondacks in the background and Green Mountains ever
the largest of them all, may be skirted for a hundred miles,
flecting virgin spruces, always sparkling clear. Champlain,
lakes nestle here and there, some large, some small, often re-
historical monuments recall Vermont's heroic past. Lovely
reminiscent of the days of the Green Mountain Boys, and
Colonial farmhouses with old-fashioned flower gardens are
on amid a labyrinth of infinite and unending beauty. Quiet
row mysterious mountain passes, these roads wind on and
streams, but frequently climbing by easy stages to lofty
heights with distant views unfolding, or again through nar-
Usually in the valleys, following the clear, swift, rocky
run hundreds of miles of improved roads.

nook and cranny of the state, and in and out among them
scenes of enchantment. Their ramifications extend to every
ticing one on and on to ever-changing and never-ending
rock masses to awe and repel, but covered with
and mountains of unparalleled beauty,—not barren
is traversed throughout her entire length by hills
ERMONT "The Green Mountain State"





A MAP OF
VERMONT

Issued by the
STATE OF VERMONT
 SECRETARY OF STATE
 Publicity Department
 MONTPELIER · VERMONT

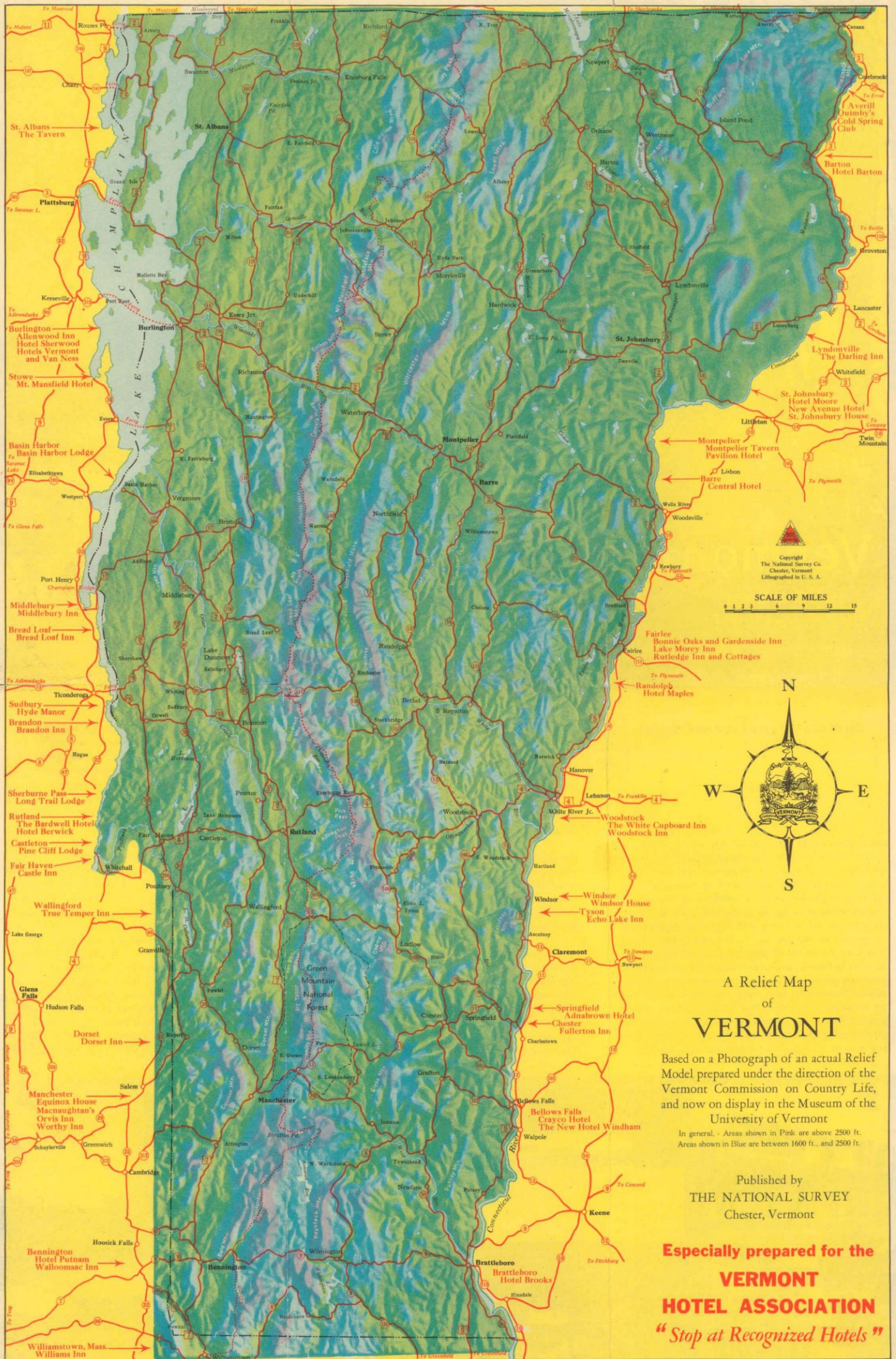
EXPLANATION

- ROUTE NUMBERS AS MARKED BY STATE HIGHWAY DEPARTMENTS
- Main Thru Auto Routes (best) ———
- Other Important Auto Routes ———
- Secondary Auto Routes ———
- Connecting Highways ———
- Railroads ———

SCALE OF MILES

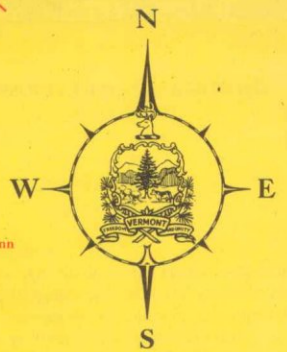


Made and Copyrighted by
 THE NATIONAL SURVEY
 CHESTER, VERMONT



Copyright
The National Survey Co.
Chester, Vermont
Lithographed in U. S. A.

SCALE OF MILES
0 1 2 3 4 5 6 7 8 9 10 11 12 13 14 15



A Relief Map
of
VERMONT

Based on a Photograph of an actual Relief Model prepared under the direction of the Vermont Commission on Country Life, and now on display in the Museum of the University of Vermont

In general - Areas shown in Pink are above 2500 ft.
Areas shown in Blue are between 1600 ft., and 2500 ft.

Published by
THE NATIONAL SURVEY
Chester, Vermont

Especially prepared for the
VERMONT
HOTEL ASSOCIATION
"Stop at Recognized Hotels"

EMERSON F. BAKER

1928, per V.P.C. 5/6/68 - 22

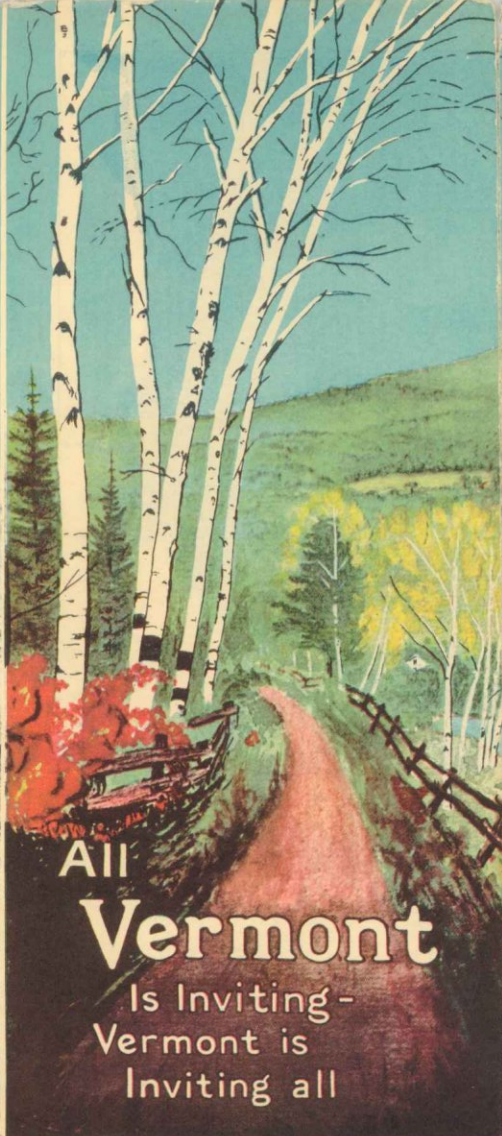
Come to the GREEN MOUNTAINS of VERMONT

The Unspoiled
Vacation Land

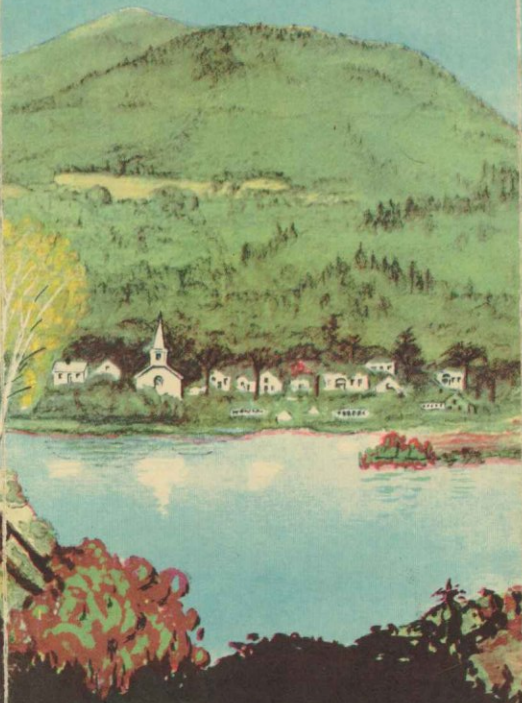
A RELIEF MAP

— of —

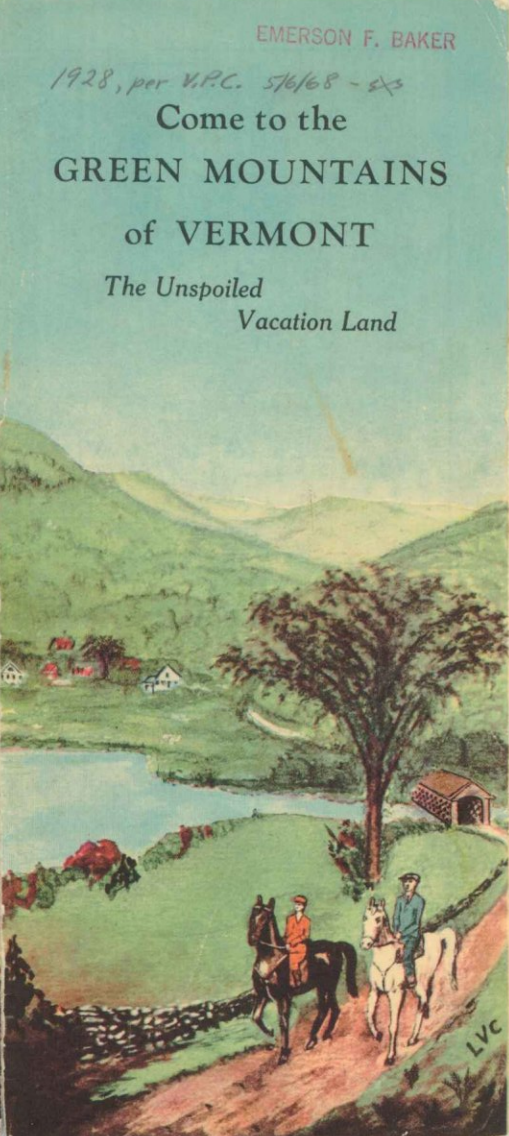
Vermont



All
Vermont
Is Inviting -
Vermont is
Inviting all



THE DARLING INN
"A Gem in the Green"
LYNDONVILLE, VERMONT



HOTEL ASSOCIATION OF VERMONT

For the

Chester, Vermont

THE NATIONAL SURVEY CO.

Published by

map:—or the publishers.

Mory In, Fairlee, Vt.; or any of the Hotels listed on the
address: The Secretary, Hotel Association of Vermont, Lake
other amusements are plentiful throughout the state.

tenance of moral standards. In this list accommodations will
be found to fit any purse. Golf courses and facilities for
lected and trained, and safeguards are provided for the main-
and property of their guests. Their servants are carefully se-
All of these hotels provide legal protection for the person
wholesome and appetizing food prepared in sanitary kitchens.
equipment and conveniences, good beds with fresh linen, and
best sanitary conditions under State supervision, modern
at these recognized hotels, where you will be assured of the
houses are listed for your convenience. You are urged to stop
within easy distance anywhere in Vermont. Representative
Charming inns and comfortable hotels are to be found

VERMONT

largely concrete.

All of the routes featured on this map are graded and im-
proved, the heaviest traveled roads being hard surfaced,
tion.

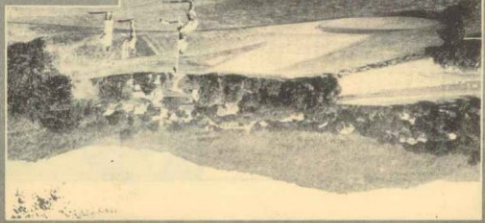
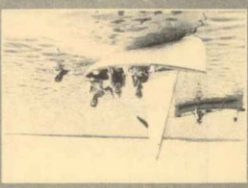
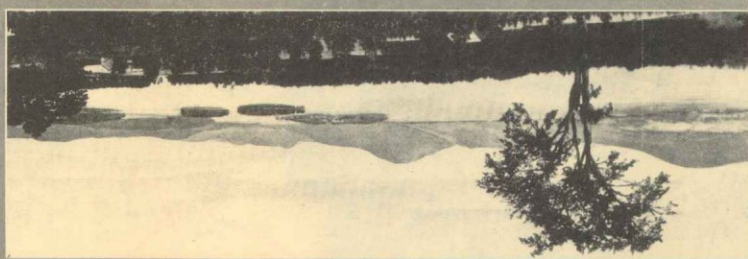
reached over splendid trunk line highways from any direc-
center of the greatest resort regions of the East, and is easily
sand Island region on the west, Vermont is the geographical
tains and Maine on the east, the Adirondacks and the Thou-
Montreal and Quebec region on the north, the White Moun-
Sited midway between the Berkshires on the south, the
the Connecticut on the east.

them all, and Killington, Stratton, Tabor, Bread Loaf, Camels
Hamp, Jay Peak and a host of others—all connected by "The
Long Trail" of the Green Mountain Club, a footpath through
the wilderness, three hundred miles long, but only an hour's
hike from civilization on either side. Not all the great peaks
are in the central ridges. Others rise with equal impressiveness
even to the very borders of the state—the Taconics on
the west, Mt. Ascutney, Burke Mountain and others close to

center of the state. Here is found Mt. Mansfield, highest of
The mightiest ranges run north and south throughout the
near at hand.

Adirondacks in the background and Green Mountains ever
the largest of them all, may be skirted for a hundred miles,
flecting virgin spruces, always sparkling clear. Champlain,
lakes nestle here and there, some large, some small, often re-
historical monuments recall Vermont's heroic past. Lovely
reminiscent of the days of the Green Mountain Boys, and
Colonial farmhouses with old-fashioned flower gardens are
on amid a labyrinth of infinite and unending beauty. Quiet
row mysterious mountain passes, these roads wind on and
streams, but frequently climbing by easy stages to lofty
heights with distant views unfolding, or again through nar-
Usually in the valleys, following the clear, swift, rocky
run hundreds of miles of improved roads.

nook and cranny of the state, and in and out among them
scenes of enchantment. Their ramifications extend to every
ticing one on and on to ever-changing and never-ending
rock masses to awe and repel, but covered with
and mountains of unparalleled beauty,—not barren
is traversed throughout her entire length by hills
ERMONT "The Green Mountain State"





A MAP OF
VERMONT

Issued by the
STATE OF VERMONT
 SECRETARY OF STATE
 Publicity Department
 MONTPELIER · VERMONT

EXPLANATION

- ROUTE NUMBERS AS MARKED BY STATE HIGHWAY DEPARTMENTS
- Main Thru Auto Routes (best) ———
- Other Important Auto Routes ———
- Secondary Auto Routes ———
- Connecting Highways ———
- Railroads ———

SCALE OF MILES

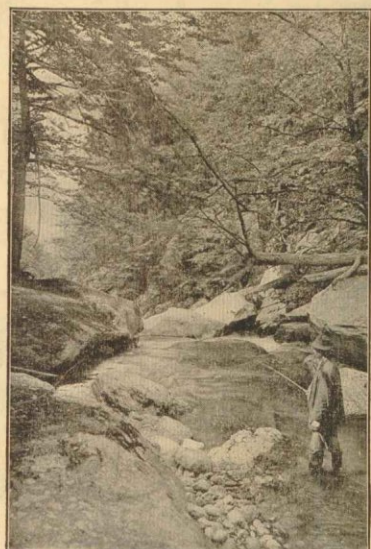


Made and Copyrighted by
 THE NATIONAL SURVEY
 CHESTER, VERMONT

A Map of VERMONT

INDICATING THE PRINCIPAL HIGHWAYS AND RAILROADS OF THE STATE AND ROUTES LEADING THERETO

Issued in 1928 by the
STATE OF VERMONT
Secretary of State
Publicity Department
MONTPELIER · VERMONT



A Mountain Stream in Vermont

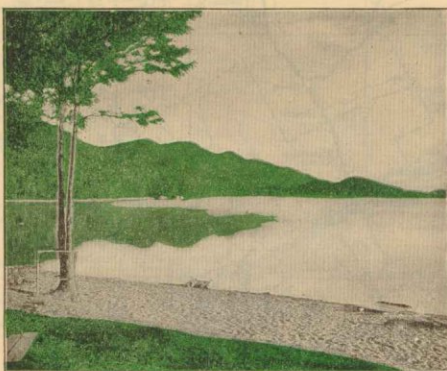
Vermont and Vacation

are closely associated in the minds of a steadily increasing number of summer home-seekers and tourists.

Through the center of Vermont, from the northern to the southern border, extends the Green Mountain range, containing approximately one thousand peaks that equal or exceed two thousand feet in height. Vermont contains hundreds of lakes, from Champlain on its western border, more than one hundred miles in length, to pools, hidden in the hills, that reflect their charming mountain settings.

Vermont contains good hotels, large and small, that serve the farm, dairy and maple products that have made the state famous. There are, in this state, abundant opportunities for the location of camps and summer homes, within a day's automobile ride of the great cities of the East.

Vermont outranks every other state in per capita value of dairy products and only three states surpass



A Lake in the Green Mountains

Address inquiries to
VERMONT PUBLICITY BUREAU
Secretary of State's Office
MONTPELIER · VERMONT

PRODUCED BY THE NATIONAL SURVEY, CHESTER, VERMONT



A Vermont Cascade

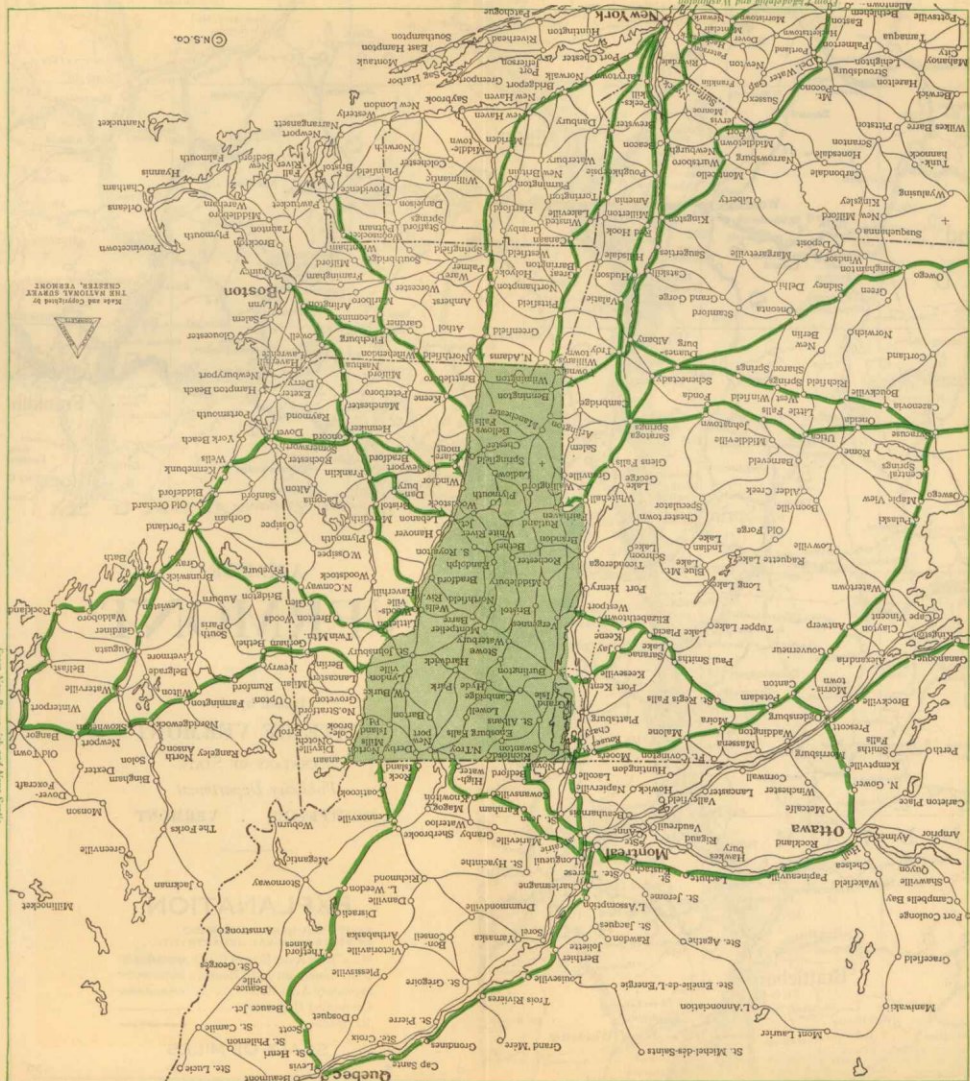
Vermont in percentage of purebred cattle. Vermont makes more than half the maple sugar produced in the United States and leads all other states in the production of maple syrup.

For many years Vermont has ranked near the head of the list in yield per acre of staple crops, largely exceeding the average yield for the United States, and it is famous for its high-grade apples and potatoes.

Vermont ranks first in the production of marble, and monumental granite, and second in the production of slate and talc. With approximately 100 varieties, Vermont produces nearly one-half the marble quarried in the United States and supplies nearly 70 per cent of the monumental and statuary marble. This state furnishes approximately one-half of the monumental granite used in this country.

Vermont is served by some of the largest railroad systems of the United States and Canada. A network of bus lines traverses the State.

Information Bureaus are maintained by the State and by local civic and commercial organizations. The former gladly supplies maps and illustrated booklets on request, and all are prepared to answer specific inquiries for information.



Destination	Distance (miles)
New York to	181 miles
Burlington (via Pittsfield, Mass.)	218 miles
Burlington	306 miles
St. Albans	337 miles
Brattleboro	214 miles
Montpelier	346 miles
St. Johnsbury	346 miles
Newport	397 miles
Boston to	155 miles
Burlington (via Williamstown, Mass.)	100 miles
Burlington (via Rutland)	228 miles
St. Albans (via Fitchburg, Mass.)	119 miles
Montpelier	213 miles
Newport	216 miles
St. Johnsbury	207 miles
Montreal to	69 miles
Burlington	102 miles
Rutland	168 miles
Newport	122 miles
St. Johnsbury	150 miles
Montpelier	141 miles
Brattleboro	245 miles
Portland, Me., to	133 miles
St. Johnsbury	181 miles
Newport	170 miles
Montpelier	248 miles
St. Albans (via St. Johnsbury)	224 miles
Burlington (via Portsmouth, N. H.)	217 miles
Bretton Woods, N. H., to	77 miles
St. Johnsbury	85 miles
Newport	74 miles
Montpelier	151 miles
Brattleboro	146 miles
Burlington (via Montpelier)	113 miles
Rutland (via White River Jct.)	187 miles
Burlington	159 miles
Saranac Lake, N. Y., to	86 miles
Burlington (via Pittsburg, N. Y., and Cumberland Head Ferry)	105 miles
Rutland (via Titcomb, N. Y.)	119 miles
Burlington (via Rouses Point, N. Y.)	165 miles
Newport (via Rouses Point, N. Y.)	155 miles
St. Johnsbury	123 miles
Montpelier	135 miles
Brattleboro	231 miles

Distances to Vermont Points