

A MAP OF
VERMONT

Indicating the Principal Highways and the
Railroads of the State

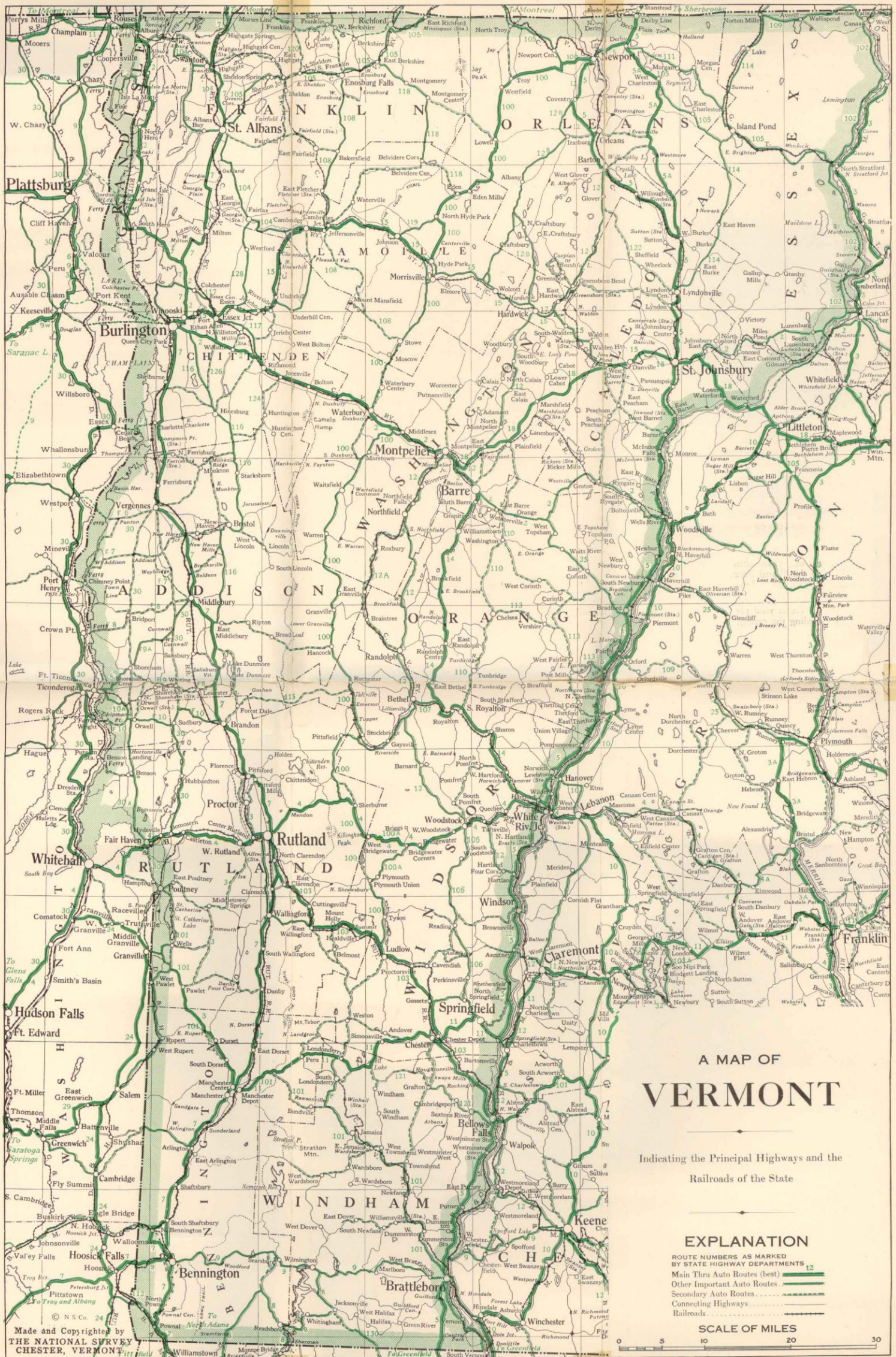
EXPLANATION

- ROUTE NUMBERS AS MARKED BY STATE HIGHWAY DEPARTMENTS
- Main Thru Auto Routes (best) ——— 12
- Other Important Auto Routes ——— 10
- Secondary Auto Routes ——— 8
- Connecting Highways ——— 6
- Railroads ——— 4

SCALE OF MILES



Made and Copyrighted by
THE NATIONAL SURVEY
CHESTER, VERMONT



A MAP OF
VERMONT

Indicating the Principal Highways and the
Railroads of the State

EXPLANATION

- ROUTE NUMBERS AS MARKED BY STATE HIGHWAY DEPARTMENTS
- Main Thru Auto Routes (best) ——— 12
- Other Important Auto Routes ——— 10
- Secondary Auto Routes ——— 8
- Connecting Highways ——— 6
- Railroads ——— 4

SCALE OF MILES

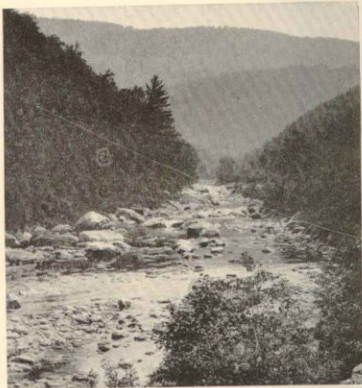


Made and Copyrighted by
THE NATIONAL SURVEY
CHESTER, VERMONT

VERMONT and VACATION are closely associated in the minds of a steadily increasing number of summer home-seekers and tourists.

Through the center of Vermont, from the northern to the southern border, extends the Green Mountain range, containing approximately one thousand peaks that equal or exceed two thousand feet in height. Vermont contains hundreds of lakes, from Champlain on its western border, more than one hundred miles in length, to pools, hidden in the hills, that reflect their charming mountain settings.

Vermont has good roads, patrolled, on which the dust is laid.



A Mountain Stream in Vermont

Vermont contains good hotels, large and small, that serve the farm, dairy and maple products that have made the state famous.

There are, in this state, abundant opportunities for the location of camps and summer homes, within a day's automobile ride of the great cities of the East.

Vermont outranks every other state in per capita value of dairy products and only three states surpass Vermont in percentage of purebred cattle.

Vermont makes more than half the maple sugar produced in the United States and leads all other states in the production of maple syrup.

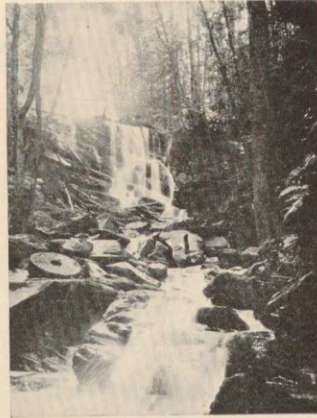
For many years Vermont has ranked near the head of the list in yield per acre of staple crops, largely exceeding the average yield for the United

1926

A MAP OF

VERMONT

Indicating the Principal Highways and the Railroads of the State and Routes Leading Thereto



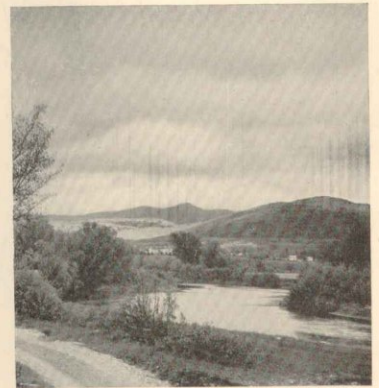
A Vermont Waterfall

Issued by the
STATE OF VERMONT
SECRETARY OF STATE

Publicity Department Montpelier, Vermont

States, and it is famous for its high-grade apples and potatoes.

Vermont ranks first in the production of marble, granite and talc, and second in the production of slate. With approximately 100 varieties, Vermont produces nearly one-half the marble quarried in the United States and supplies nearly 70 per cent of the monumental and statuary marble. This state furnishes about one-fifth of the granite quarried in the United States and approximately one-half of the monumental granite used in this country.



Otter Creek Valley and the Green Mountains

Vermont is served by some of the largest railroad systems of the United States and Canada.

Vermont welcomes the visitor and desires to extend its hospitality.

This state maintains a publicity Bureau in the Office of the Secretary of State, and is glad to furnish maps and illustrated booklets, and to answer specific inquiries for information.

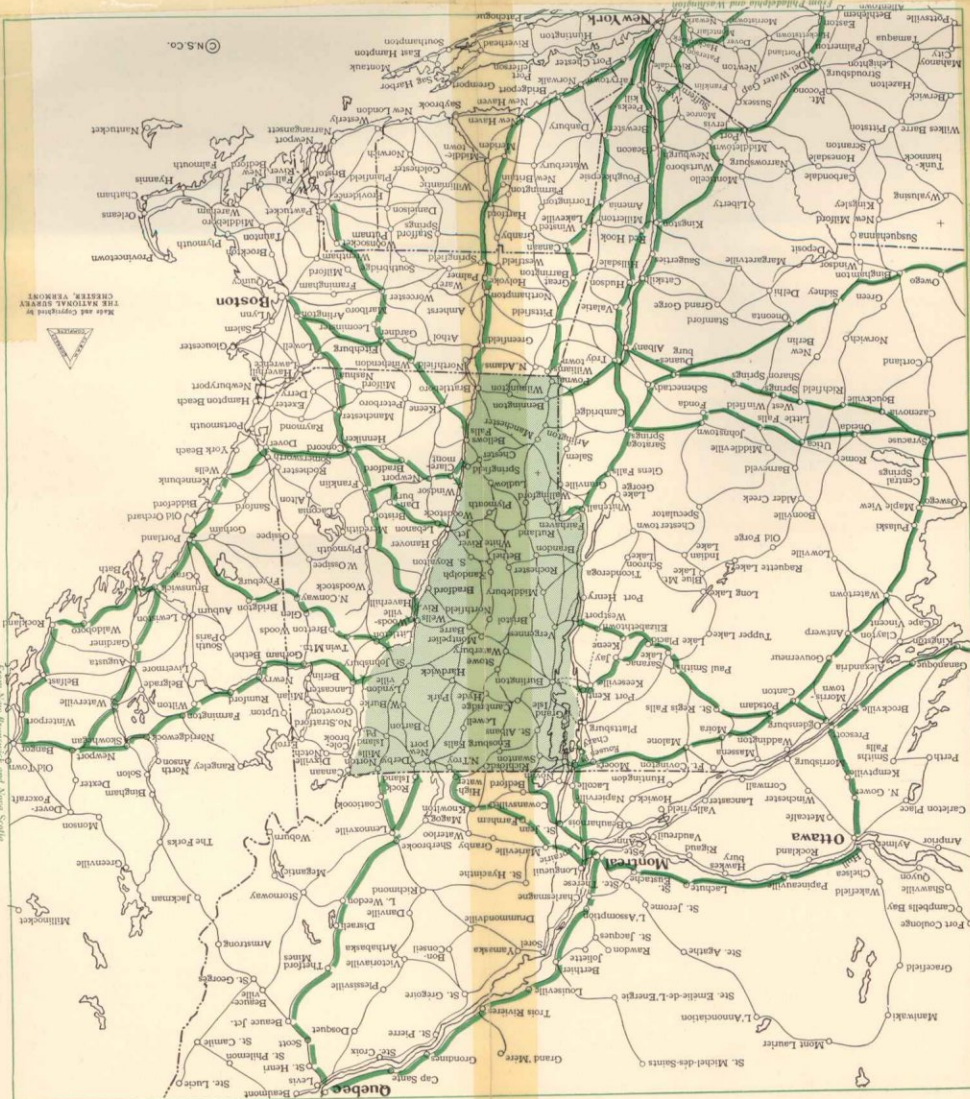
Address inquiries to

VERMONT PUBLICITY BUREAU

Secretary of State's Office

MONTPELIER

VERMONT



Distances to Vermont Points.

New York to	181 miles
Bennington (via Pittsfield, Mass.)	238 miles
Rutland	238 miles
Burlington	306 miles
St. Albans	337 miles
Brattleboro	215 miles
Montpelier	346 miles
St. Johnsbury	346 miles
Newport	397 miles
Boston to	155 miles
Bennington (via Williamstown, Mass.)	100 miles
Rutland (via Bellows Falls)	228 miles
Burlington (via Rutland)	201 miles
St. Albans	201 miles
Brattleboro (via Fitchburg, Mass.)	119 miles
Montpelier	213 miles
St. Johnsbury	216 miles
Newport	207 miles
Montreal to	69 miles
Burlington	102 miles
Rutland	168 miles
Bennington	227 miles
Newport	102 miles
St. Johnsbury	181 miles
Newport	170 miles
Montpelier	248 miles
St. Albans	224 miles
Burlington (via St. Johnsbury)	217 miles
Rutland (via Portmouth, N. H.)	228 miles
Bretton Woods, N. H. to	37 miles
Newport	85 miles
Montpelier	74 miles
Brattleboro	151 miles
St. Albans	146 miles
Burlington (via Montpelier)	113 miles
Rutland (via White River Jct.)	129 miles
Bennington	187 miles
Saranac Lake, N. Y. to	80 miles
Burlington (via Plattsburg, N. Y. and	105 miles
Camberland Head Ferry)	119 miles
Rutland (via Ticonderoga, N. Y.)	163 miles
Bennington	153 miles
Newport (via Rouses Point, N. Y.)	162 miles
St. Johnsbury (via Burlington)	125 miles
Montpelier	231 miles
Brattleboro	231 miles