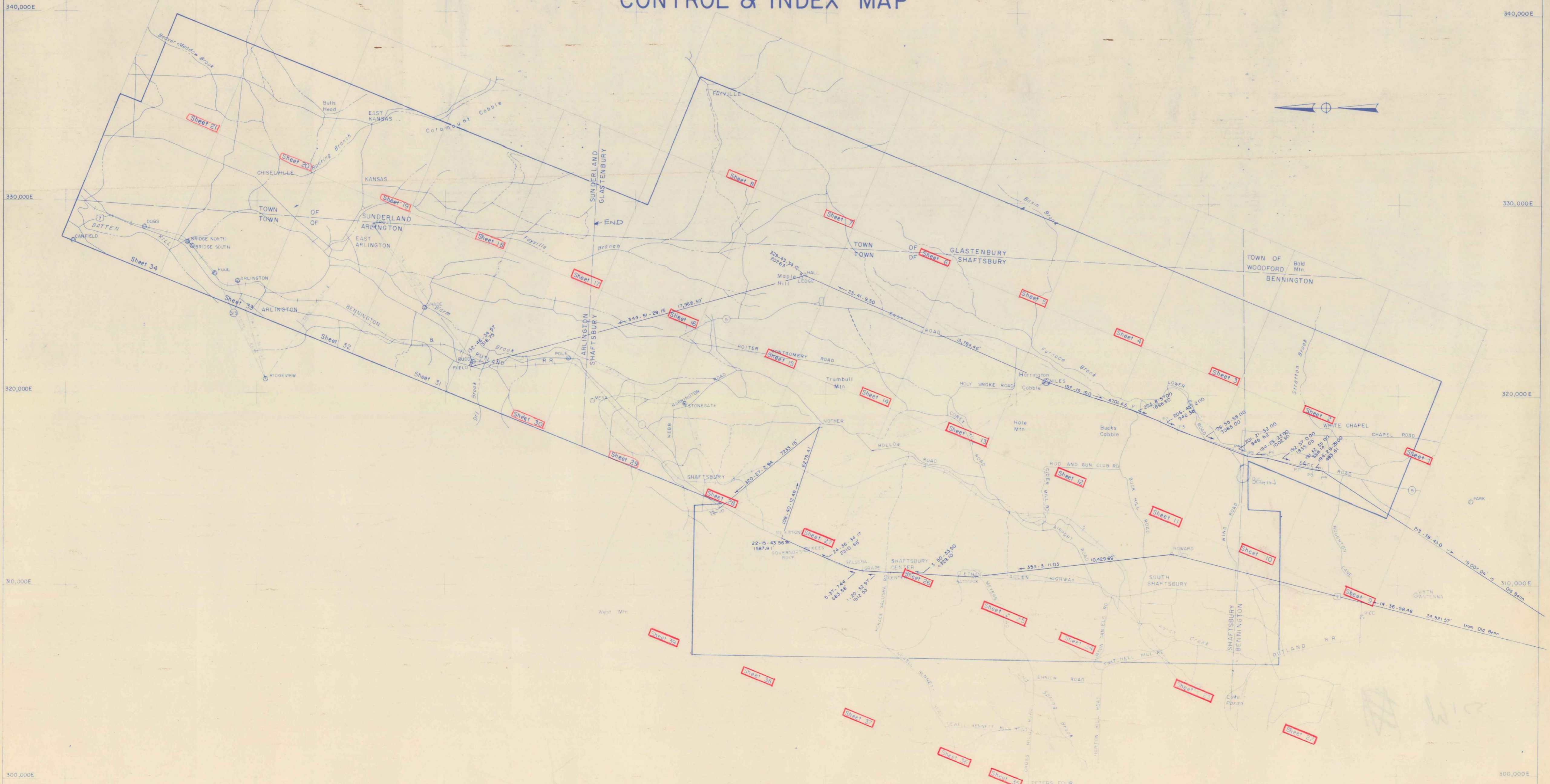


# BENNINGTON - SHAFTSBURY - GLASTENBURY ARLINGTON - SUNDERLAND CONTROL & INDEX MAP

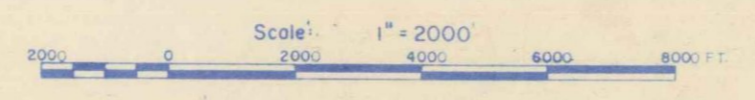


**HORIZONTAL CONTROL LEGEND**

- MOORE SURVEY & MAPPING CORP. SEMI PERMANENT
- MOORE SURVEY & MAPPING CORP. PERMANENT
- STATE OF VERMONT'S STANDARD DISC BY OTHERS
- U.S.C. & G.S. TRIANGULATION POINT (STANDARD DISC)

**BOSWELL ENGINEERS & SURVEYORS**  
BENNINGTON, VERMONT

COMPILED BY PHOTOGRAMMETRIC METHODS  
MOORE SURVEY & MAPPING CORP.  
CONTROL BY VT. GEODETIC SURVEY, U.S.C. & G.S. & M.S. & M. CORP.



10,000' GRID BASED ON VERMONT STATE PLANE COORDINATE SYSTEM  
TRANSVERSE MERCATOR PROJECTION

THE STATE OF VERMONT  
DEPARTMENT OF HIGHWAYS  
BENN-SHAFTS-GLAST-ARL-SUND  
TOPOGRAPHIC MAP  
CONTRACT: \_\_\_\_\_ DATE OF PHOTOGRAPHY: 5/2/66

1033