

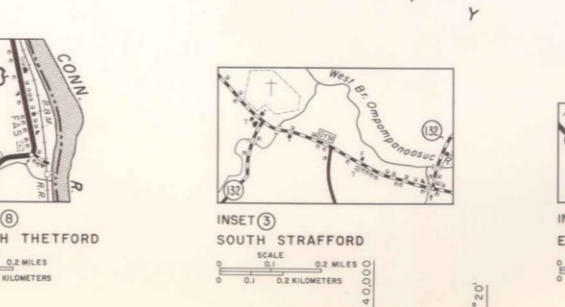
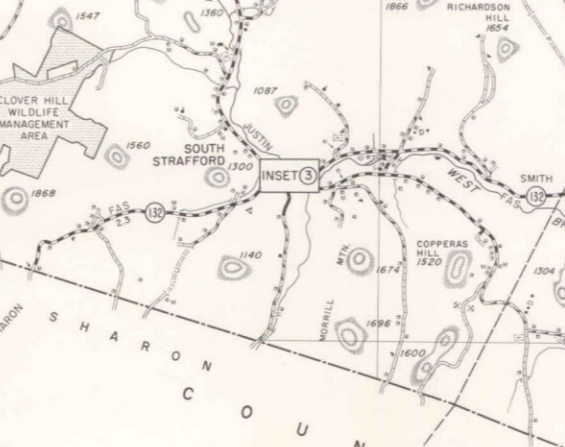
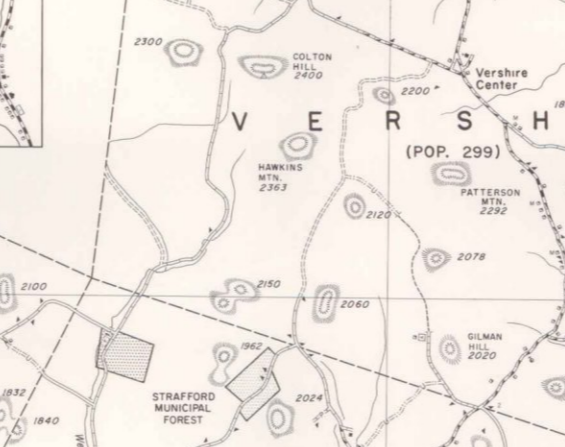
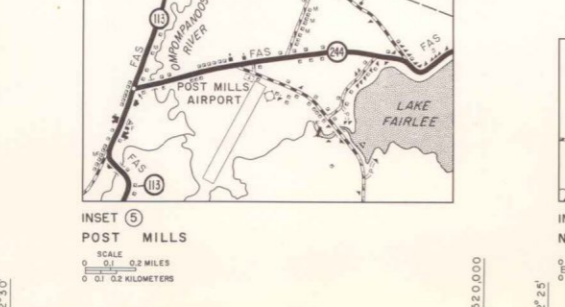
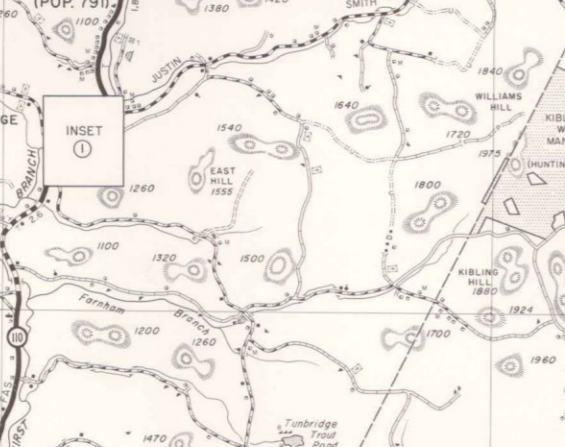
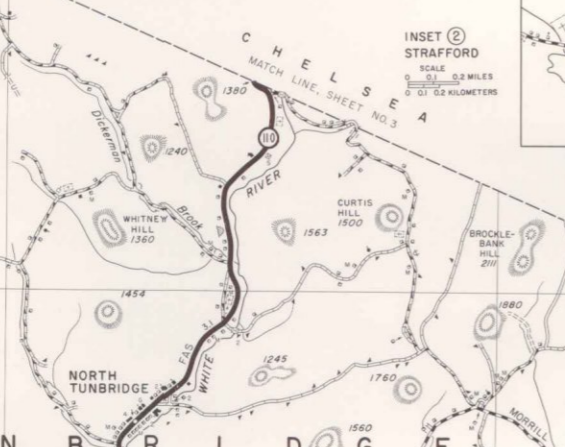
- LEGEND**
- HIGHWAYS**
- Divided Highway, Interstate or State
  - State Highway System
  - Town Highway System
  - Impassable or Untraveled Road
  - Legally Gated Highway
  - Private Road (Ticks show end of town hwy)
  - Discontinued Highway (Corner town hwy)
  - Legal Trail (Former town hwy)
  - Foot Trail
  - Interstate Numbered Route
  - U.S. Numbered Route
  - State Numbered Route
  - Fully Controlled Access
  - Federal Aid Primary Highway System
  - Federal Aid Secondary Highway System
  - National Forest Highway
  - State Forest Highway
  - Mileage Between Bypass
  - Bridge or Culvert (Less than 4' span)
  - Bridge or Culvert (Over 4' thru 20' span)
  - Bridge (Over 20' span)
  - Drawn Bridge
  - Steel Truss Bridge
  - Covered Bridge
  - Causeway
  - Cattle Pass
  - Grass Crossing
  - Highway Underpass
  - Highway Overpass
- MISCELLANEOUS**
- Water Supply Standpipe
  - Pipe Line (Oil, Gas, Water)
  - Pumping Station (Water)
  - Seismic Observed Plant
  - Water Treatment Plant
  - Dam
  - Dam with Road
  - Flood Control Dam
  - Roadside Spring
  - Quarry
  - Gravel Pit
  - Junkyard and Dump (if sanitary)
  - Landfill (if sanitary)
  - Scrap Metal Pile
  - Building Material
  - Cemetery
  - Tree Nursery
  - Microwave Relay Station
  - Transulation Station
- CONSERVATION AND RECREATION**
- National State, Town or Municipal Forest or Park, Wildlife Refuge, Military Reservation, Etc.
  - Small Park
  - Golf Course or Country Club
  - Amusement Area or Mall
  - Rifle Club
  - Ski Area
  - Swimnasium
  - Camp Site
  - Picnic Ground or Rest Area
  - Playground, Ballfield, Etc.
  - Bathing Beach or Swimming Pool
  - Monument or Historic Site
  - Historic Building
  - Church
  - Scenic Site
  - Fairground or Racetrack
  - Loose or Boy/Girl's Camp
  - Drive-In Theater
  - Ranger Station
  - Observation or Fire Tower
  - Fish Hatchery
  - State Preserve
  - Fishing Access Area
  - Dock, Pier or Marina
- BUILDINGS**
- National State, Town or Municipal Farm Unit
  - Dwelling (Other than Farm)
  - Multifamily Dwelling
  - Group of Dwellings
  - Mobile Dwelling
  - Group of Mobile Dwellings
  - Seasonal Dwelling
  - Group of Seasonal Dwellings
  - Business
  - Factory or Industry
  - Sawmill
  - Hotel or Inn
  - Tourist Court or Motel (No Units)
  - Church
  - School
  - Consolidated or Large School
  - Other Educational Institution
  - Courthouse
  - Hall (City, Town, Community, or Grange)
  - Town Clerk's Office
  - Highway Garage (State, Town, or Federal)
  - Post Office
  - Public Library
  - Hospital
  - Rest Home
  - U.S. Border Customs Station
  - State Police
  - Filling Station
  - Power Plant
- OTHER TRANSPORTATION**
- Railroad and Station
  - Airport (Complete Facilities)
  - Airport (Limited Facilities)
  - Landing Area
  - Military Airport
  - Seaplane Base
  - Seaplane Anchorage
  - Airway Beach
  - Air Navigation Aid
  - Light House
  - Head of Navigation
  - Toll Ferry
- ROAD SURFACE TYPES**
- Bituminous Mix, Macadam Mix, Macadam
  - Penetration Concrete, Bituminous Concrete, Brick or Block
  - Surface Treated Gravel
  - Gravel
  - Soil Surface (2nd Class Gravel)
  - Graded and Drained
  - Unimproved
  - Primitive
- POLITICAL SUBDIVISIONS**
- National Boundary
  - State Boundary
  - County Boundary
  - Town or Town-City Boundary
  - Incorporated Village Boundary
  - Urban Compact Boundary
  - City or Incorporated Village
  - Urban Compact Unincorporated
  - Federal Aid Urban Area Boundary
  - State Capital
  - County Seat
  - Other City or Village Center
  - Incorporated for Highways
- NATURAL FEATURES**
- Stream
  - Marsh
  - Prominent Elevation
  - Reservoir, Lake or Pond

- ROAD SURFACE TYPES**
- Bituminous Mix, Macadam Mix, Macadam
  - Penetration Concrete, Bituminous Concrete, Brick or Block
  - Surface Treated Gravel
  - Gravel
  - Soil Surface (2nd Class Gravel)
  - Graded and Drained
  - Unimproved
  - Primitive
- POLITICAL SUBDIVISIONS**
- National Boundary
  - State Boundary
  - County Boundary
  - Town or Town-City Boundary
  - Incorporated Village Boundary
  - Urban Compact Boundary
  - City or Incorporated Village
  - Urban Compact Unincorporated
  - Federal Aid Urban Area Boundary
  - State Capital
  - County Seat
  - Other City or Village Center
  - Incorporated for Highways
- NATURAL FEATURES**
- Stream
  - Marsh
  - Prominent Elevation
  - Reservoir, Lake or Pond

- ROAD SURFACE TYPES**
- Bituminous Mix, Macadam Mix, Macadam
  - Penetration Concrete, Bituminous Concrete, Brick or Block
  - Surface Treated Gravel
  - Gravel
  - Soil Surface (2nd Class Gravel)
  - Graded and Drained
  - Unimproved
  - Primitive
- POLITICAL SUBDIVISIONS**
- National Boundary
  - State Boundary
  - County Boundary
  - Town or Town-City Boundary
  - Incorporated Village Boundary
  - Urban Compact Boundary
  - City or Incorporated Village
  - Urban Compact Unincorporated
  - Federal Aid Urban Area Boundary
  - State Capital
  - County Seat
  - Other City or Village Center
  - Incorporated for Highways
- NATURAL FEATURES**
- Stream
  - Marsh
  - Prominent Elevation
  - Reservoir, Lake or Pond

- ROAD SURFACE TYPES**
- Bituminous Mix, Macadam Mix, Macadam
  - Penetration Concrete, Bituminous Concrete, Brick or Block
  - Surface Treated Gravel
  - Gravel
  - Soil Surface (2nd Class Gravel)
  - Graded and Drained
  - Unimproved
  - Primitive
- POLITICAL SUBDIVISIONS**
- National Boundary
  - State Boundary
  - County Boundary
  - Town or Town-City Boundary
  - Incorporated Village Boundary
  - Urban Compact Boundary
  - City or Incorporated Village
  - Urban Compact Unincorporated
  - Federal Aid Urban Area Boundary
  - State Capital
  - County Seat
  - Other City or Village Center
  - Incorporated for Highways
- NATURAL FEATURES**
- Stream
  - Marsh
  - Prominent Elevation
  - Reservoir, Lake or Pond

- ROAD SURFACE TYPES**
- Bituminous Mix, Macadam Mix, Macadam
  - Penetration Concrete, Bituminous Concrete, Brick or Block
  - Surface Treated Gravel
  - Gravel
  - Soil Surface (2nd Class Gravel)
  - Graded and Drained
  - Unimproved
  - Primitive
- POLITICAL SUBDIVISIONS**
- National Boundary
  - State Boundary
  - County Boundary
  - Town or Town-City Boundary
  - Incorporated Village Boundary
  - Urban Compact Boundary
  - City or Incorporated Village
  - Urban Compact Unincorporated
  - Federal Aid Urban Area Boundary
  - State Capital
  - County Seat
  - Other City or Village Center
  - Incorporated for Highways
- NATURAL FEATURES**
- Stream
  - Marsh
  - Prominent Elevation
  - Reservoir, Lake or Pond



**NOTES**

Polyconic map projection based on U.S. Geological Survey maps. State plane coordinate system superimposed on transverse mercator projection in 20,000-foot grids.

Map prepared with aid of aerial photography dated 1941, 1962 and 1974.

Inventory date of cultural features is 1977. Date of road surface types is 1977.

Population figures based on 1970 census. Population of incorporated villages and urban compacts not included in town totals.

**GENERAL HIGHWAY MAP  
ORANGE COUNTY  
VERMONT**

PREPARED BY THE  
**AGENCY OF TRANSPORTATION  
PLANNING DIVISION**  
IN COOPERATION WITH THE  
**U.S. DEPARTMENT OF TRANSPORTATION  
FEDERAL HIGHWAY ADMINISTRATION**

SCALE  
0 1 2 MILES  
0 1 2 KILOMETERS

1977