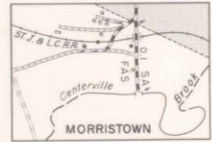
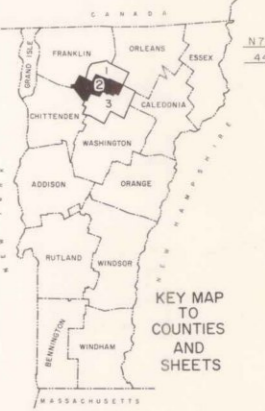


INSET 1
CAMBRIDGE JUNCTION



INSET 4
HYDE PARK



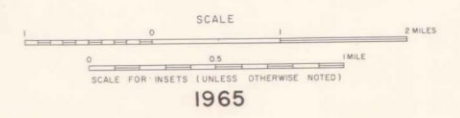
KEY MAP TO COUNTIES AND SHEETS

LEGEND

- HIGHWAYS**
 - DIVIDED HIGHWAY
 - STATE HIGHWAY SYSTEM
 - SA — STATE AID HIGHWAY SYSTEM
 - SA — STATE AID ENDS
 - TOWN HIGHWAY SYSTEM
 - IMPASSIBLE OR UNTRAVELED ROAD
 - PRIVATE ROAD (TICKS SHOW BEGINNING)
 - LEGAL TRAIL
 - FOOT TRAIL
 - INTERSTATE NUMBERED ROUTE
 - U.S. NUMBERED ROUTE
 - STATE NUMBERED ROUTE
 - FULL CONTROL OF ACCESS
 - FCI
 - FAP — FEDERAL AID PRIMARY HIGHWAY SYSTEM
 - FAS — FEDERAL AID SECONDARY HIGHWAY SYSTEM
 - FAS — FEDERAL AID SECONDARY ENDS
 - NFH — NATIONAL FOREST HIGHWAY
 - SFH — STATE FOREST OR PARK HIGHWAY
 - U.S.S.V.C.
 - BRIDGE OR CULVERT (LESS THAN 4' SPAN)
 - BRIDGE OR CULVERT (4' THRU 10' SPAN)
 - BRIDGE (10' THRU 20' SPAN)
 - BRIDGE (OVER 20' SPAN)
 - DRAWBRIDGE
 - STEEL TRUSS BRIDGE
 - COVERED BRIDGE
 - CAUSEWAY
 - CATTLE PASS
 - GRADE CROSSING
 - UNDERPASS
 - OVERPASS
- ROAD SURFACE TYPES**
 - MAGADAM PENETRATION, CONCRETE, BITU-MINUS CONCRETE, BRICK OR BLOCK
 - BITUMINOUS MIX OR MAGADAM MIX
 - SURFACE TREATED GRAVEL
 - GRAVEL
 - SOIL SURFACE (2ND CLASS GRAVEL)
 - GRADED AND DRAINED
 - UNIMPROVED
 - PRIMITIVE
- BUILDINGS**
 - FARM UNIT
 - DWELLING (OTHER THAN FARM)
 - GROUP OF DWELLINGS
 - SEASONAL DWELLING
 - GROUP OF SEASONAL DWELLINGS
 - BUSINESS
 - COMBINED FILLING STATION AND BUSINESS
 - COMBINED DWELLING AND BUSINESS
 - FACTORY OR INDUSTRY
 - SAWMILL
 - HOTEL
 - CHURCH
 - SCHOOL
 - OTHER EDUCATIONAL INSTITUTION
 - COURTHOUSE
 - HALL (T-TOWN, G-COMMUNITY, G-GRANGE)
 - TOWN CLERK OFFICE
 - HIGHWAY GARAGE, S-STATE, T-TOWN
 - NF-NATIONAL FOREST
 - FIRE ENGINE HOUSE
 - POST OFFICE
 - PUBLIC LIBRARY
 - HOSPITAL
 - REST HOME
 - U.S. BORDER CUSTOMS STATION
 - STATE POLICE
 - POWER PLANT
 - POWER SUBSTATION
 - RADIO STATION
 - SUGAR HOUSE
 - MILK DEPOT, CREAMERY OR CHEESE FACTORY
 - FRUIT OR PRODUCE PACKING HOUSE
 - SEASONAL INDUSTRY
 - WAREHOUSE
 - NADDSIDE STAND
 - FREE BUSHOUSE
 - STILL (WOOD BY-PRODUCTS)
 - WEIGHING STATION
 - GROUP OF MIXED CULTURAL FEATURES (Figures show building symbols indicate number of units included in group)
- POLITICAL SUBDIVISIONS**
 - NATIONAL BOUNDARY
 - STATE BOUNDARY
 - COUNTY BOUNDARY
 - TOWN OR TOWN-CITY BOUNDARY
 - INCORPORATED VILLAGE BOUNDARY
 - URBAN CONTACT BOUNDARY
 - CITY OR INCORPORATED VILLAGE
 - FEDERAL AID URBAN AREA BOUNDARY
 - STATE CAPITAL
 - COUNTY SEAT
 - OTHER CITY OR VILLAGE CENTER
 - HD — INCORPORATED FOR HIGHWAYS
- CONSERVATION AND RECREATION**
 - SMALL PARK
 - GOLF GROUND OR COUNTRY CLUB
 - AMUSEMENT AREA OR MALL
 - RIFLE CLUB
 - SKI AREA
 - SYNCRASION
 - CAMP SITE
 - PICNIC GROUND
 - PLAYGROUND, BALL FIELD, ETC.
 - BATHING BEACH OR SWIMMING POOL
 - MONUMENT OR HISTORIC SITE
 - HISTORIC BUILDING
 - SCENIC SITE
 - FAIRGROUND
 - TOURIST COURT OR HOTELING UNITS
 - LODGE OR RECREATION CAMP
 - DRIVE-IN THEATER
 - RANGER STATION
 - OBSERVATION OR LOOKOUT TOWER
 - FISH BARRAGE
 - GAME PRESERVE
 - FISHING ACCESS AREA
 - DOCK, PIER OR MARINA
- OTHER TRANSPORTATION**
 - RAILROAD AND STATION
 - AIRPORT (COMPLETE FACILITIES)
 - AIRPORT (LIMITED FACILITIES)
 - LANDING AREA
 - MILITARY AIRPORT
 - SEAPLANE BASE
 - SEAPLANE ANCHORAGE
 - AIRWAY BEACON
 - AIR NAVIGATION AID
 - LIGHTHOUSE
 - HEAD OF NAVIGATION
 - TOLL FERRY
- NATURAL FEATURES**
 - STREAM
 - MARSH
 - MOUNTAIN RANGE
 - PROMINENT ELEVATION
 - RESERVOIR, LAKE OR POND
- MISCELLANEOUS**
 - TRANSLATION STATION
 - WATER SUPPLY STANDPIPE
 - PUMPING STATION
 - WATER TREATMENT PLANT OR INSTALLATION
 - WIRE
 - QUARRY
 - GRAVEL PIT
 - DUMP
 - CEMETERY
 - DAM
 - DAM WITH ROAD
 - TREE NURSERY
 - SPRING
 - TOWN FARM
 - PIPE LINE, OIL, GAS, WATER
 - PUMPING STATION (OIL OR GAS)
 - VALVE HOUSE

GENERAL HIGHWAY MAP
LAMOILLE COUNTY
VERMONT

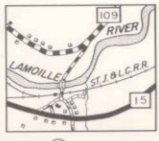
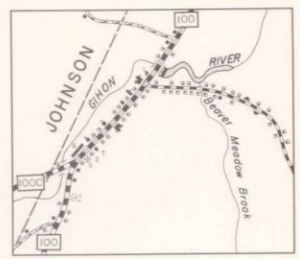
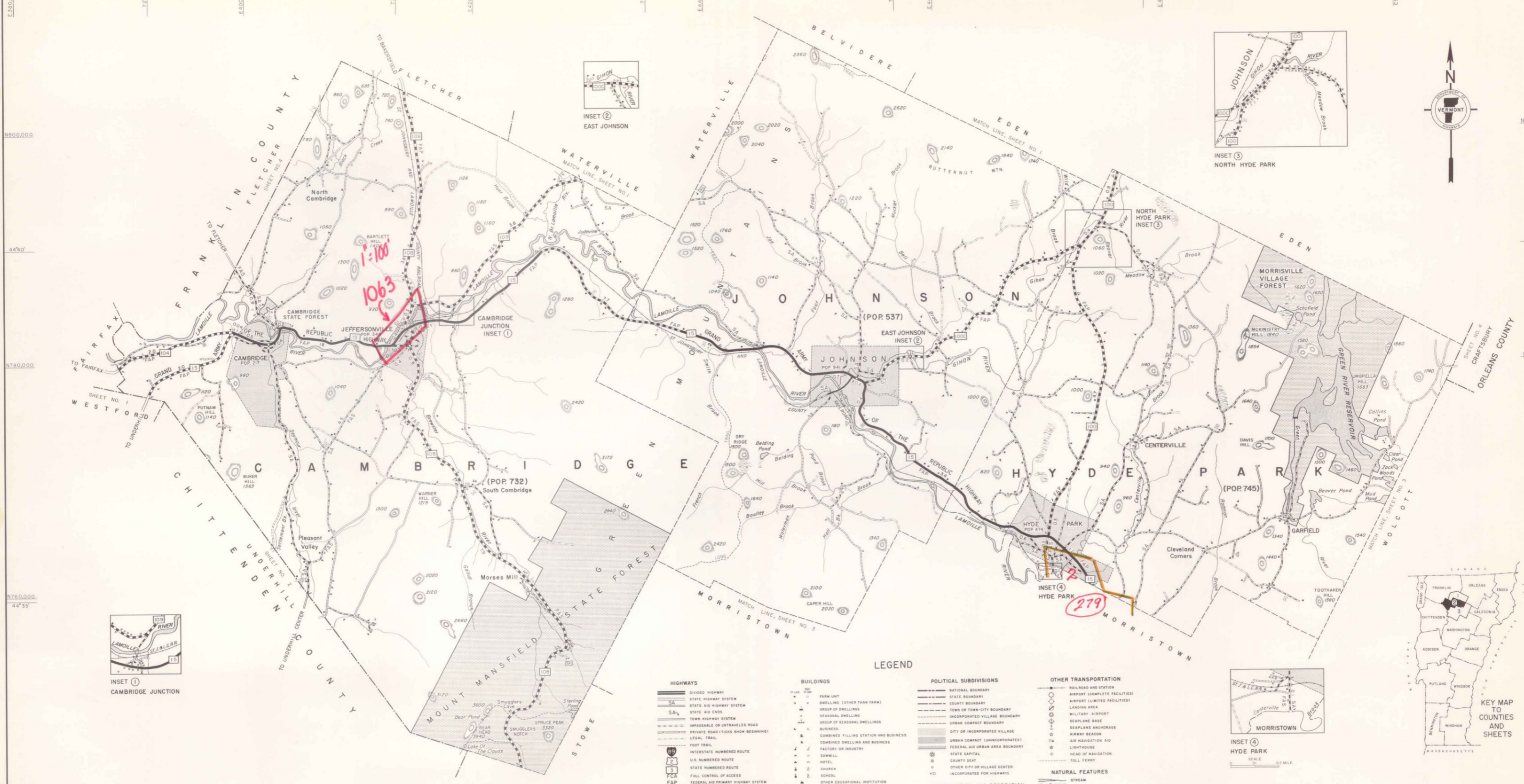
PREPARED BY THE
DEPARTMENT OF HIGHWAYS
HIGHWAY PLANNING DIVISION
IN COOPERATION WITH
U.S. DEPARTMENT OF COMMERCE



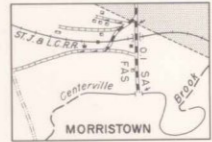
NOTES
Polyconic map projection based on U.S. Geological Survey maps. State plane coordinate system superimposed on transverse mercator projection in 20,000-foot grids.
Map prepared with aid of aerial photography dated 1941, and 1962.
Inventory date of cultural features is 1958. Date of road surface types is Dec. 31, 1964. Population figures based on 1960 census. Population of incorporated villages and urban compacts not included in town totals.

MAP DRAWN 1965

REVISIONS	
Feature	Date



INSET 1
CAMBRIDGE JUNCTION



INSET 4
HYDE PARK



KEY MAP TO COUNTIES AND SHEETS

LEGEND

- HIGHWAYS**
 - Divided Highway
 - State Highway System
 - State Aid Highway System
 - State Aid Ends
 - Town Highway System
 - Impassable or Untraveled Road
 - Private Road (Ticks Show Beginning)
 - Legal Trail
 - Foot Trail
 - Interstate Numbered Route
 - U.S. Numbered Route
 - State Numbered Route
 - Full Control of Access
 - Federal Aid Primary Highway System
 - FAS
 - FAS
 - NFH
 - SFH
 - U.S.S.V.
 - Bridge or Culvert (Less Than 4' Span)
 - Bridge or Culvert (4' Thru 10' Span)
 - Bridge (Over 10' Span)
 - Bridge (Over 5' Span)
 - Drawbridge
 - Steel Truss Bridge
 - Covered Bridge
 - Caisson
 - Cattle Pass
 - Grade Crossing
 - Underpass
 - Overpass
- ROAD SURFACE TYPES**
 - Magnesian Penetration, Concrete, Bit., or Brick
 - Bituminous Mix or Magnesian Mix
 - Surface Treated Gravel
 - Gravel
 - Soil Surface (2nd Class Gravel)
 - Graded and Drained
 - Unimproved
 - Primitive
- BUILDINGS**
 - Farm Unit
 - Dwelling (Other Than Farm)
 - Group of Dwellings
 - Seasonal Dwelling
 - Group of Seasonal Dwellings
 - Business
 - Combined Filling Station and Business
 - Combined Dwelling and Business
 - Factory or Industry
 - Sawmill
 - Hotel
 - Church
 - School
 - Other Educational Institution
 - Courthouse
 - Wall (T-Town, G-Community, G-Grange)
 - Town Clerk Office
 - Highway Garage, S-State, T-Town
 - M-National Forest
 - Fire Engine House
 - Post Office
 - Public Library
 - Hospital
 - Nest Home
 - U.S. Border Customs Station
 - State Police
 - Power Plant
 - Power Substation
 - Radio Station
 - Sugar House
 - Milk Depot, Creamery or Cheese Factory
 - Fruit or Produce Packing House
 - Seasonal Industry
 - Warehouse
 - Noadside Stand
 - Free Exchange
 - Still (Wood by-Products)
 - Weighing Station
 - Group of Mixed Cultural Features (Figure Key Building Symbols Indicate Number of Units Included in Group)
- POLITICAL SUBDIVISIONS**
 - National Boundary
 - State Boundary
 - County Boundary
 - Town or Town-City Boundary
 - Incorporated Village Boundary
 - Urban Compact Boundary
 - City or Incorporated Village
 - Federal Aid Urban Area Boundary
 - State Capital
 - County Seat
 - Other City or Village Center
 - Incorporated for Highways
- CONSERVATION AND RECREATION**
 - National, State, Town or Municipal Forest or Park
 - Wildlife Refuge, Military Reservation, Etc.
 - Small Park
 - Golf Ground or Country Club
 - Amusement Area or Mall
 - Rifle Club
 - Ski Area
 - Swimming
 - Camp Site
 - Picnic Ground
 - Playground, Ball Field, Etc.
 - Bathing Beach or Swimming Pool
 - Monument or Historic Site
 - Historic Building
 - Scenic Site
 - Fairground
 - Tourist Court or Motel (No Units)
 - Loose or Boy Scout's Camp
 - Drive-in Theater
 - Ranger Station
 - Observation or Lookout Tower
 - Fish Hatchery
 - Game Preserve
 - Fishing Access Area
 - Dock, Pier or Marina
- OTHER TRANSPORTATION**
 - Railroad and Station
 - Airport (Complete Facilities)
 - Airport (Limited Facilities)
 - Landing Area
 - Military Airport
 - Seaplane Base
 - Seaplane Anchorage
 - Airway Beacon
 - Air Navigation Aid
 - Lighthouse
 - Head of Navigation
 - Toll Ferry
- NATURAL FEATURES**
 - Stream
 - Marsh
 - Mountain Range
 - Prominent Elevation
 - Reservoir, Lake or Pond
- MISCELLANEOUS**
 - Transmission Station
 - Water Supply Standpipe
 - Pumping Station
 - Water Treatment Plant or Installation
 - Wire
 - Quarry
 - Gravel Pit
 - Dump
 - Cemetery
 - Dam
 - Dam with Road
 - Tree Nursery
 - Spring
 - Town Farm
 - Pipe Line, Oil, Gas, Water
 - Pumping Station (Oil or Gas)
 - Valve House

NOTES
 Polyconic map projection based on U.S. Geological Survey maps. State plane coordinate system superimposed on transverse mercator projection in 20,000-foot grids.
 Map prepared with aid of aerial photography dated 1941, and 1962.
 Inventory date of cultural features is 1958. Date of road surface types is Dec. 31, 1964. Population figures based on 1960 census. Population of incorporated villages and urban compact not included in town totals.

MAP DRAWN 1965

REVISIONS	
Feature	Date

GENERAL HIGHWAY MAP
LAMOILLE COUNTY
 VERMONT

PREPARED BY THE
 DEPARTMENT OF HIGHWAYS
 HIGHWAY PLANNING DIVISION
 IN COOPERATION WITH
 U.S. DEPARTMENT OF COMMERCE

