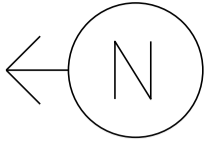


MS # 820

VT 78 EAST



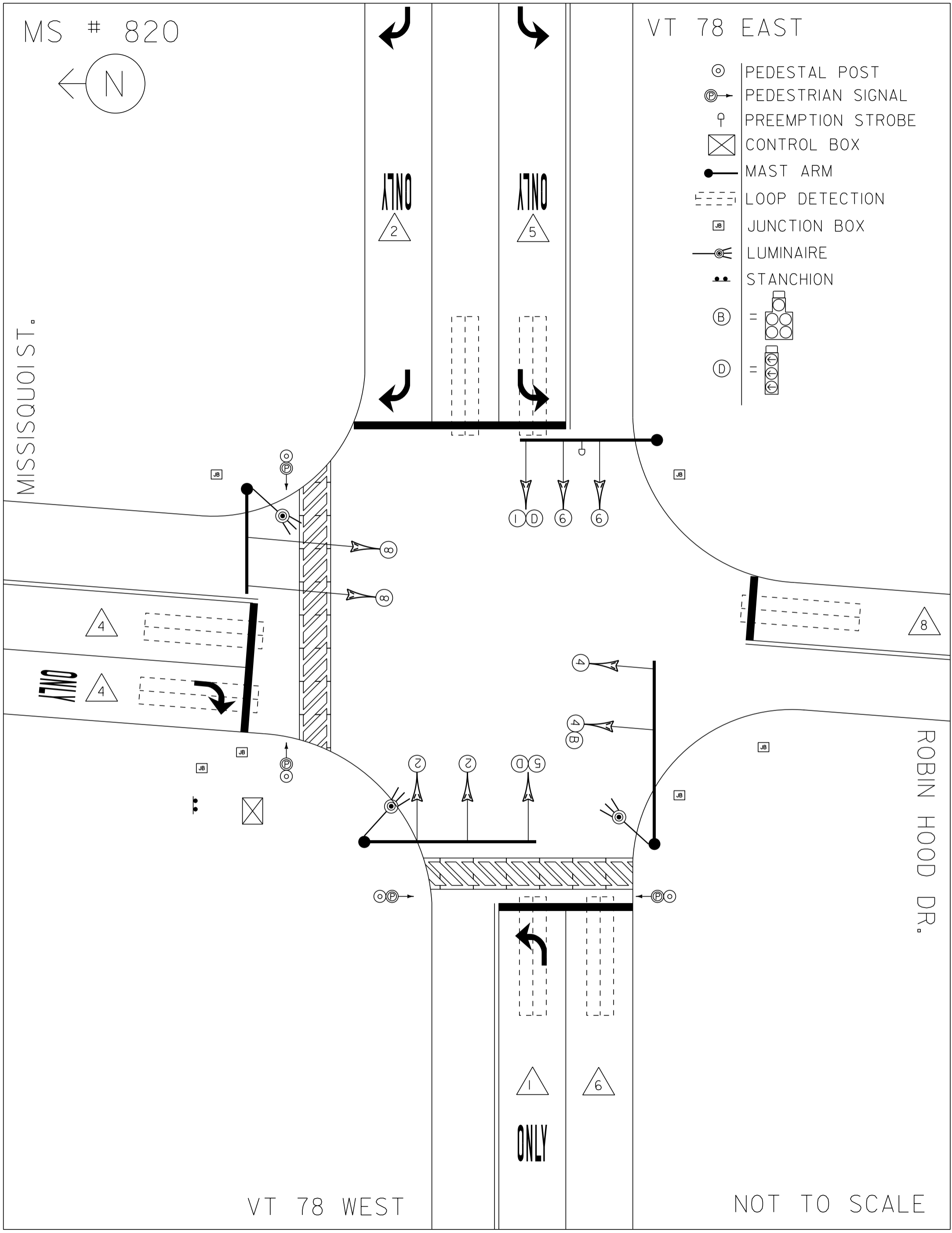
- ⊙ PEDESTAL POST
- ⊙→ PEDESTRIAN SIGNAL
- ♀ PREEMPTION STROBE
- ⊠ CONTROL BOX
- MAST ARM
- - - LOOP DETECTION
- ⊠ JB JUNCTION BOX
- ☼ LUMINAIRE
- ⋮ STANCHION
- ⊙ =
- ⊙ =

MISSISSQUOI ST.

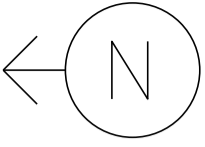
ROBIN HOOD DR.

VT 78 WEST

NOT TO SCALE



MS # 820



VT 78 EAST

MISSISQUOI STREET

12'

11'

10'

12'

ONLY

ONLY

LANE LINE 240'

LANE LINE 240'

STOP BAR 34'

CROSSWALK 80'

STOP BAR 14'

12'

12'

ROBIN HOOD DR.

11'

LANE LINE 60'

12'

ONLY

STOP BAR 23'

CROSSWALK 44'

STOP BAR 22'

ONLY

LANE LINE 170'

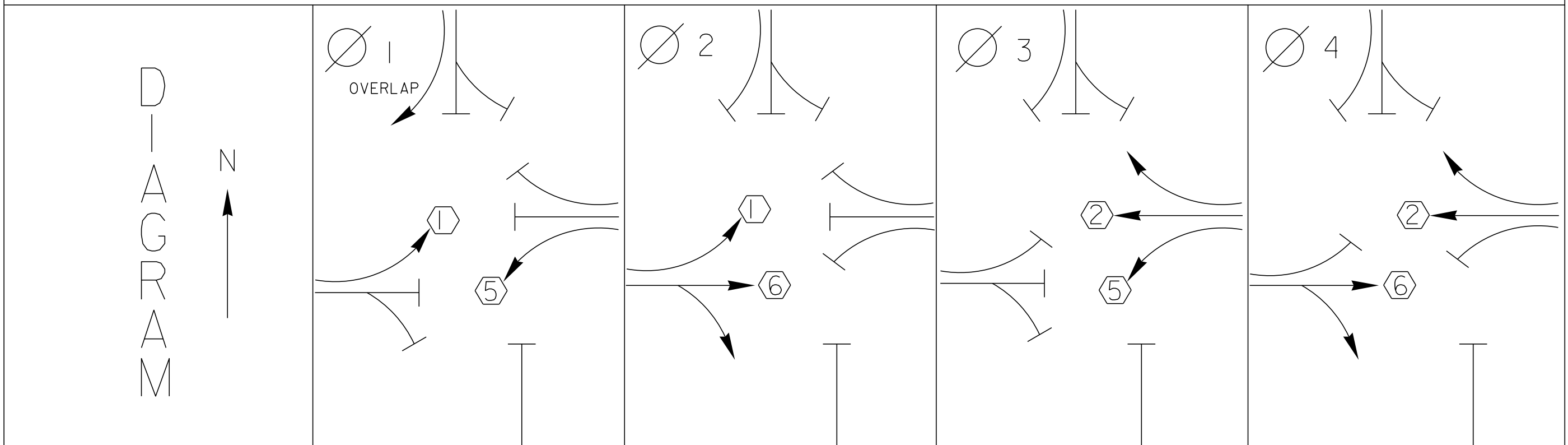
VT 78 WEST

12'

10'

12'

NOT TO SCALE



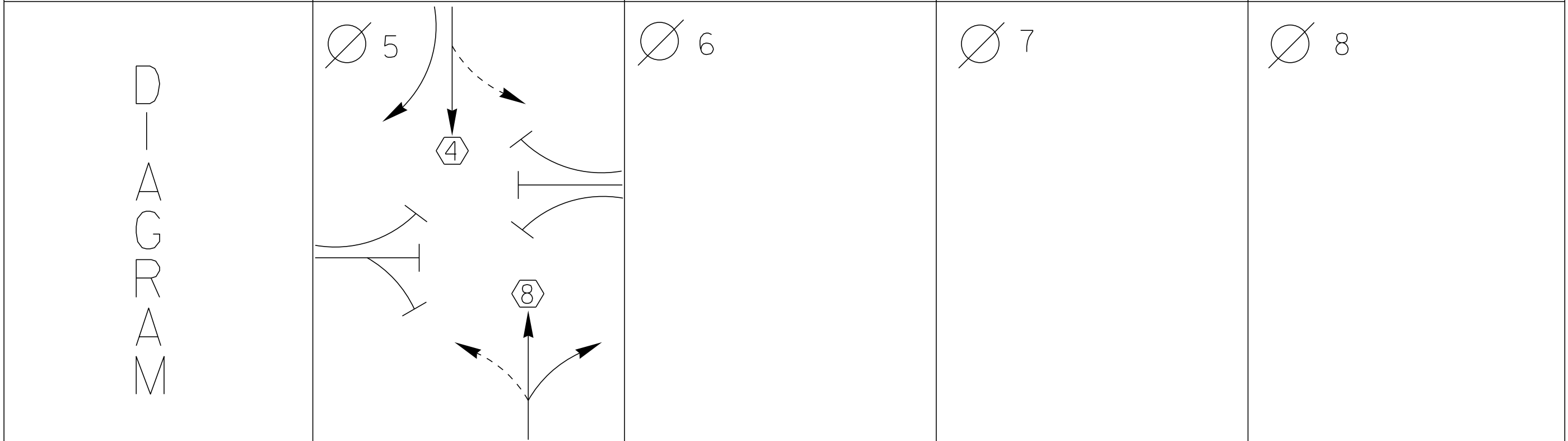
TIMING

G =
Y =

G =
Y =

G =
Y =

G =
Y =



TIMING

G =
Y =

G =
Y =

G =
Y =

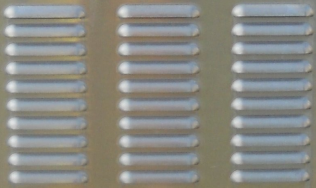
G =
Y =

PROTECTED
TURNS

PERMITTED
TURNS
PEDESTRIAN

CYCLE LENGTH, C = _____ S

PROPERTY OF
VT. AGENCY OF TRANS.
MAINTENANCE DIV.
IN EMERGENCY CALL
USE TRANS. OFFICE
802-624-5905
NIGHTS & WEEKENDS : 250-2943
INTERSECTION NO. 86-952



PROPERTY OF :
VT. AGENCY OF TRANS.
MAINTENANCE DIV.

IN EMERGENCY CALL :
DIST. TRANS. OFFICE

802 - 524 - 5926

NIGHTS & WEEKENDS : 250-0163

INTERSECTION NO. MS-820

Turn on Date: 10-3-06

DANGER

115 VOLTS A.C.

WARNING

DO NOT OPERATE
CABINET WITHOUT
CMU / MMU

144711

Control panel with the following labels and controls:

- DRINK ON (with OFF and ON indicators)
- AUTO (with a small black knob)
- FLASH (with a small black knob)
- REF TIME (with OFF and ON indicators)

ECONOUTE



BUS INTERFACE UNIT

POWER ON
TRANSMIT
VALID DATA

SDLC

LM 622t **M 622t** **M 622t** **M 622t**

DET FLT
SENS FREQ
MODE PR LG 1 N
REQ

DET FLT
SENS FREQ
MODE PR LG 1 N
REQ

DET FLT
SENS FREQ
MODE PR LG 1 N
REQ

DET FLT
SENS FREQ
MODE PR LG 1 N
REQ

DET SW MODULE
DET 1
DET 2
DET 3
DET 4
DET 5
DET 6
DET 7
DET 8
DET 9
DET 10
DET 11
DET 12
DET 13
DET 14
DET 15

ECONOLITE

B. I. U. DETECTOR #1

L3
L5
L4
L2

L1
L2

L7
L8

L5
L4
L6

DLY

L11
L12

L9
L10

L15
L16

L13
L14

PREEMPTOR
EVP# 3
EVP# 4

PREEMPTOR
EVP# 5
EVP# 6

DETECTOR
TEST
MODULE

STATUS DISPLAY:

```

PHASE 1 2 3 4 5 6 7 8 9 10 11
4 MORN 3 T/N 1 2 3 4 5 6 7 8 9 10 11
MAX1 13 UEN T C C T
PED
8 MORN 3
MAX1 13k4
CMD SRC NTC FREE
  
```

F1 MAIN MENU F2 NEXT SCREEN

F3 SUB MENU F4 NEXT DATA

CURSOR

1 2

4 5

BUS INTERFACE UNIT

POWER ON
TRANSMIT
VLD DATA

LM 6221 LM 6221 LM 6221 LM 6221

ECONOLITE

B. L.U. DETECTOR #1	L1	L2	L3	L4	L5	L6	L7	L8	L9	L10	L11	L12	L13	L14	L15	L16	L17	L18	L19	L20	L21	L22	L23	L24	L25	L26	L27	L28	L29	L30	L31	L32	L33	L34	L35	L36	L37	L38	L39	L40	L41	L42	L43	L44	L45	L46	L47	L48	L49	L50	L51	L52	L53	L54	L55	L56	L57	L58	L59	L60	L61	L62	L63	L64	L65	L66	L67	L68	L69	L70	L71	L72	L73	L74	L75	L76	L77	L78	L79	L80	L81	L82	L83	L84	L85	L86	L87	L88	L89	L90	L91	L92	L93	L94	L95	L96	L97	L98	L99	L100
---------------------	----	----	----	----	----	----	----	----	----	-----	-----	-----	-----	-----	-----	-----	-----	-----	-----	-----	-----	-----	-----	-----	-----	-----	-----	-----	-----	-----	-----	-----	-----	-----	-----	-----	-----	-----	-----	-----	-----	-----	-----	-----	-----	-----	-----	-----	-----	-----	-----	-----	-----	-----	-----	-----	-----	-----	-----	-----	-----	-----	-----	-----	-----	-----	-----	-----	-----	-----	-----	-----	-----	-----	-----	-----	-----	-----	-----	-----	-----	-----	-----	-----	-----	-----	-----	-----	-----	-----	-----	-----	-----	-----	-----	-----	-----	-----	-----	------

PREEMPTOR EVPA 3
PREEMPTOR EVPA 4
PREEMPTOR EVPA 5
PREEMPTOR EVPA 6

Pass & Seymour
writing devices and accessories

White cables in plastic bags

CABINET POWER SUPPLY

24 VDC
12 VDC
12 VAC
5 SA 25
5 SA 25

USE PRECISIONLY FOR GUIDANCE

AC LINE 240V

ECONOLITE

ECONOLITE CONTROL PRODUCTS, INC.

ASC/2S-2100

1 2 3
4 5 6
7 8 9
0 CLEAR

ENTER

POWER ON
TRANSMIT
VLD DATA

PORT 1
PORT 2

TLM SOLC TERM

A B C D

TRIP
TRIP
TRIP
TRIP

Various electronic components in bags, including a TSC component.

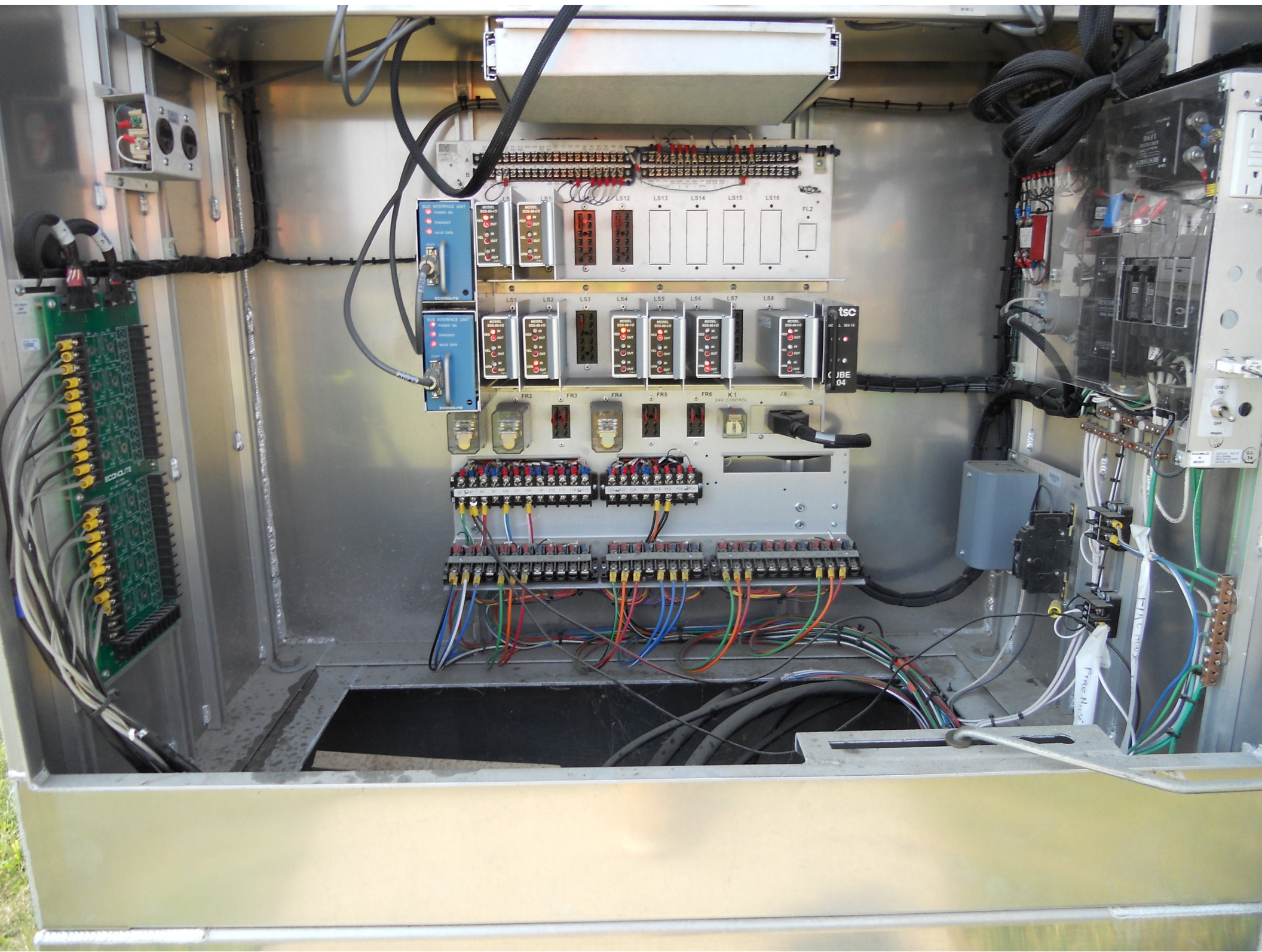
ECONOLITE MMU-10E

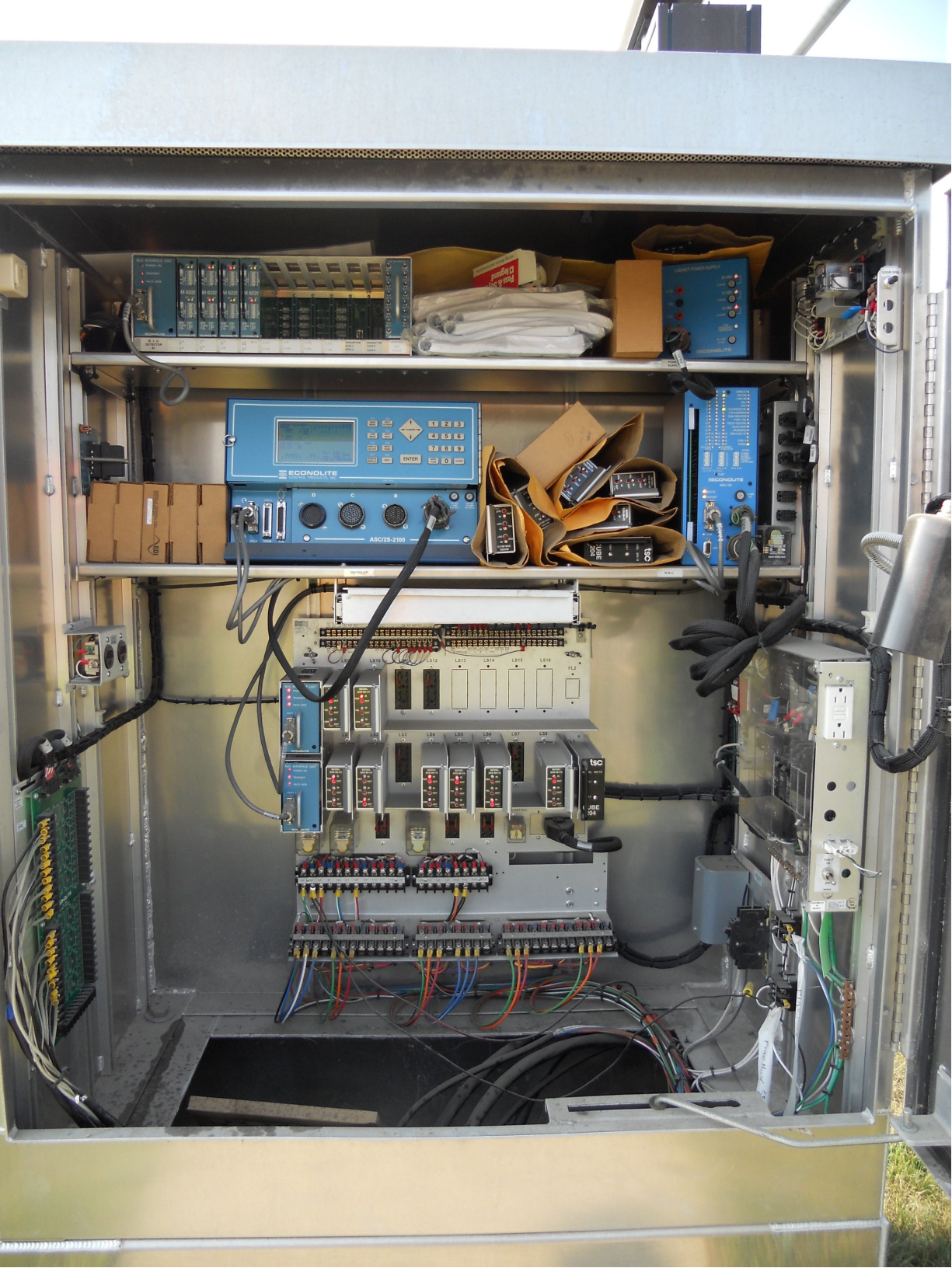
CONFLICT
RED FAS
CMT FAS
SRV
25V
CLEARANCE FAL
VLA CLEARANCE
DUAL RECEPTION
RED-CHGR FAL
LOCAL FLAS
DIAGNOSTIC
11.4
11.5
11.6
11.7
11.8
11.9
12.0
12.1
12.2
12.3
12.4
12.5
12.6
12.7
12.8
12.9
13.0
13.1
13.2
13.3
13.4
13.5
13.6
13.7
13.8
13.9
14.0
14.1
14.2
14.3
14.4
14.5
14.6
14.7
14.8
14.9
15.0
15.1
15.2
15.3
15.4
15.5
15.6
15.7
15.8
15.9
16.0
16.1
16.2
16.3
16.4
16.5
16.6
16.7
16.8
16.9
17.0
17.1
17.2
17.3
17.4
17.5
17.6
17.7
17.8
17.9
18.0
18.1
18.2
18.3
18.4
18.5
18.6
18.7
18.8
18.9
19.0
19.1
19.2
19.3
19.4
19.5
19.6
19.7
19.8
19.9
20.0
20.1
20.2
20.3
20.4
20.5
20.6
20.7
20.8
20.9
21.0
21.1
21.2
21.3
21.4
21.5
21.6
21.7
21.8
21.9
22.0
22.1
22.2
22.3
22.4
22.5
22.6
22.7
22.8
22.9
23.0
23.1
23.2
23.3
23.4
23.5
23.6
23.7
23.8
23.9
24.0
24.1
24.2
24.3
24.4
24.5
24.6
24.7
24.8
24.9
25.0
25.1
25.2
25.3
25.4
25.5
25.6
25.7
25.8
25.9
26.0
26.1
26.2
26.3
26.4
26.5
26.6
26.7
26.8
26.9
27.0
27.1
27.2
27.3
27.4
27.5
27.6
27.7
27.8
27.9
28.0
28.1
28.2
28.3
28.4
28.5
28.6
28.7
28.8
28.9
29.0
29.1
29.2
29.3
29.4
29.5
29.6
29.7
29.8
29.9
30.0
30.1
30.2
30.3
30.4
30.5
30.6
30.7
30.8
30.9
31.0
31.1
31.2
31.3
31.4
31.5
31.6
31.7
31.8
31.9
32.0
32.1
32.2
32.3
32.4
32.5
32.6
32.7
32.8
32.9
33.0
33.1
33.2
33.3
33.4
33.5
33.6
33.7
33.8
33.9
34.0
34.1
34.2
34.3
34.4
34.5
34.6
34.7
34.8
34.9
35.0
35.1
35.2
35.3
35.4
35.5
35.6
35.7
35.8
35.9
36.0
36.1
36.2
36.3
36.4
36.5
36.6
36.7
36.8
36.9
37.0
37.1
37.2
37.3
37.4
37.5
37.6
37.7
37.8
37.9
38.0
38.1
38.2
38.3
38.4
38.5
38.6
38.7
38.8
38.9
39.0
39.1
39.2
39.3
39.4
39.5
39.6
39.7
39.8
39.9
40.0
40.1
40.2
40.3
40.4
40.5
40.6
40.7
40.8
40.9
41.0
41.1
41.2
41.3
41.4
41.5
41.6
41.7
41.8
41.9
42.0
42.1
42.2
42.3
42.4
42.5
42.6
42.7
42.8
42.9
43.0
43.1
43.2
43.3
43.4
43.5
43.6
43.7
43.8
43.9
44.0
44.1
44.2
44.3
44.4
44.5
44.6
44.7
44.8
44.9
45.0
45.1
45.2
45.3
45.4
45.5
45.6
45.7
45.8
45.9
46.0
46.1
46.2
46.3
46.4
46.5
46.6
46.7
46.8
46.9
47.0
47.1
47.2
47.3
47.4
47.5
47.6
47.7
47.8
47.9
48.0
48.1
48.2
48.3
48.4
48.5
48.6
48.7
48.8
48.9
49.0
49.1
49.2
49.3
49.4
49.5
49.6
49.7
49.8
49.9
50.0
50.1
50.2
50.3
50.4
50.5
50.6
50.7
50.8
50.9
51.0
51.1
51.2
51.3
51.4
51.5
51.6
51.7
51.8
51.9
52.0
52.1
52.2
52.3
52.4
52.5
52.6
52.7
52.8
52.9
53.0
53.1
53.2
53.3
53.4
53.5
53.6
53.7
53.8
53.9
54.0
54.1
54.2
54.3
54.4
54.5
54.6
54.7
54.8
54.9
55.0
55.1
55.2
55.3
55.4
55.5
55.6
55.7
55.8
55.9
56.0
56.1
56.2
56.3
56.4
56.5
56.6
56.7
56.8
56.9
57.0
57.1
57.2
57.3
57.4
57.5
57.6
57.7
57.8
57.9
58.0
58.1
58.2
58.3
58.4
58.5
58.6
58.7
58.8
58.9
59.0
59.1
59.2
59.3
59.4
59.5
59.6
59.7
59.8
59.9
60.0
60.1
60.2
60.3
60.4
60.5
60.6
60.7
60.8
60.9
61.0
61.1
61.2
61.3
61.4
61.5
61.6
61.7
61.8
61.9
62.0
62.1
62.2
62.3
62.4
62.5
62.6
62.7
62.8
62.9
63.0
63.1
63.2
63.3
63.4
63.5
63.6
63.7
63.8
63.9
64.0
64.1
64.2
64.3
64.4
64.5
64.6
64.7
64.8
64.9
65.0
65.1
65.2
65.3
65.4
65.5
65.6
65.7
65.8
65.9
66.0
66.1
66.2
66.3
66.4
66.5
66.6
66.7
66.8
66.9
67.0
67.1
67.2
67.3
67.4
67.5
67.6
67.7
67.8
67.9
68.0
68.1
68.2
68.3
68.4
68.5
68.6
68.7
68.8
68.9
69.0
69.1
69.2
69.3
69.4
69.5
69.6
69.7
69.8
69.9
70.0
70.1
70.2
70.3
70.4
70.5
70.6
70.7
70.8
70.9
71.0
71.1
71.2
71.3
71.4
71.5
71.6
71.7
71.8
71.9
72.0
72.1
72.2
72.3
72.4
72.5
72.6
72.7
72.8
72.9
73.0
73.1
73.2
73.3
73.4
73.5
73.6
73.7
73.8
73.9
74.0
74.1
74.2
74.3
74.4
74.5
74.6
74.7
74.8
74.9
75.0
75.1
75.2
75.3
75.4
75.5
75.6
75.7
75.8
75.9
76.0
76.1
76.2
76.3
76.4
76.5
76.6
76.7
76.8
76.9
77.0
77.1
77.2
77.3
77.4
77.5
77.6
77.7
77.8
77.9
78.0
78.1
78.2
78.3
78.4
78.5
78.6
78.7
78.8
78.9
79.0
79.1
79.2
79.3
79.4
79.5
79.6
79.7
79.8
79.9
80.0
80.1
80.2
80.3
80.4
80.5
80.6
80.7
80.8
80.9
81.0
81.1
81.2
81.3
81.4
81.5
81.6
81.7
81.8
81.9
82.0
82.1
82.2
82.3
82.4
82.5
82.6
82.7
82.8
82.9
83.0
83.1
83.2
83.3
83.4
83.5
83.6
83.7
83.8
83.9
84.0
84.1
84.2
84.3
84.4
84.5
84.6
84.7
84.8
84.9
85.0
85.1
85.2
85.3
85.4
85.5
85.6
85.7
85.8
85.9
86.0
86.1
86.2
86.3
86.4
86.5
86.6
86.7
86.8
86.9
87.0
87.1
87.2
87.3
87.4
87.5
87.6
87.7
87.8
87.9
88.0
88.1
88.2
88.3
88.4
88.5
88.6
88.7
88.8
88.9
89.0
89.1
89.2
89.3
89.4
89.5
89.6
89.7
89.8
89.9
90.0
90.1
90.2
90.3
90.4
90.5
90.6
90.7
90.8
90.9
91.0
91.1
91.2
91.3
91.4
91.5
91.6
91.7
91.8
91.9
92.0
92.1
92.2
92.3
92.4
92.5
92.6
92.7
92.8
92.9
93.0
93.1
93.2
93.3
93.4
93.5
93.6
93.7
93.8
93.9
94.0
94.1
94.2
94.3
94.4
94.5
94.6
94.7
94.8
94.9
95.0
95.1
95.2
95.3
95.4
95.5
95.6
95.7
95.8
95.9
96.0
96.1
96.2
96.3
96.4
96.5
96.6
96.7
96.8
96.9
97.0
97.1
97.2
97.3
97.4
97.5
97.6
97.7
97.8
97.9
98.0
98.1
98.2
98.3
98.4
98.5
98.6
98.7
98.8
98.9
99.0
99.1
99.2
99.3
99.4
99.5
99.6
99.7
99.8
99.9
100.0

CONROLLER

POWER ON
TRANSMIT
VLD DATA

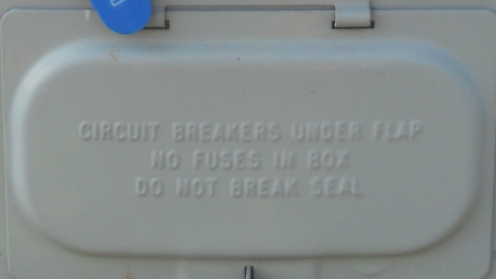
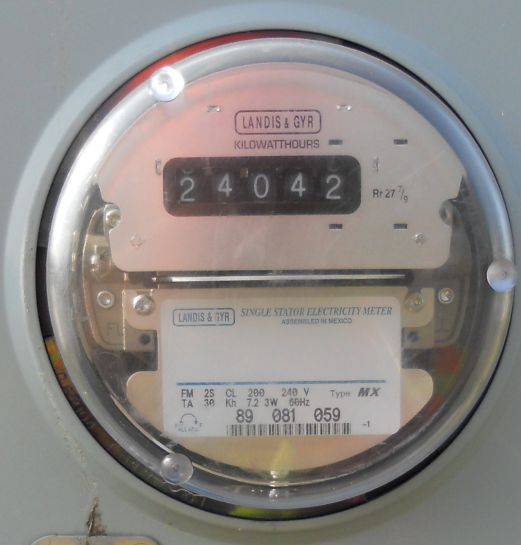
MODEL 25-2100
MODEL 25-2100





⚡ DANGER / PELIGRO

HAZARD OF ELECTRICAL SHOCK OR BURN
SERVICE BY UTILITY AUTHORIZED PERSONNEL ONLY
DO NOT PAINT OVER OR REMOVE THIS LABEL
PELIGRO DE DESCARGA ELECTRICA O QUEMADURA
SOLAMENTE PERSONAS AUTORIZADAS DE LA COMPAÑIA
ELECTRICA PUEDEN MANTENERLO
NO PINTEN ENCIMA NI REMUEVA ESTA ETIQUETA



⚡ DANGER / PELIGRO

HAZARD OF ELECTRICAL SHOCK OR BURN
SERVICE BY UTILITY AUTHORIZED PERSONNEL ONLY
DO NOT PAINT OVER OR REMOVE THIS LABEL
PELIGRO DE DESCARGA ELECTRICA O QUEMADURA
SOLAMENTE PERSONAS AUTORIZADAS DE LA COMPAÑIA
ELECTRICA PUEDEN MANTENERLO
NO PINTEN ENCIMA NI REMUEVA ESTA ETIQUETA



ONLY



DUNKIN' DONUTS

DRIVE THRU

Now Hiring CDL DRIVERS

Now Hiring CDL DRIVERS















obil



NO PARKING
ON TRAVEL
LANE

NO
PARKING
ON TRAVEL
LANE

SUNOCO

NO PARKING
ON TRAVEL
LANE



10.00" / 21.0'
55KSI / 7 GA
7.00" / 27.0' / 7 GA



ROBIN HOOD DR







DUNKIN' DONUTS

DRIVE THRU
OPEN 24 HOURS
SERVING HOT
CRAVINGS
FROM 5:00 AM

Hannaford







10.00" / 32.0'
55KSI / 7 GA
7.00" / 27.0' / 7 GA





ROBIN HOOD
INDUSTRIAL
COMPLEX

DUNKIN'
DONUTS

U1st
LogiTech



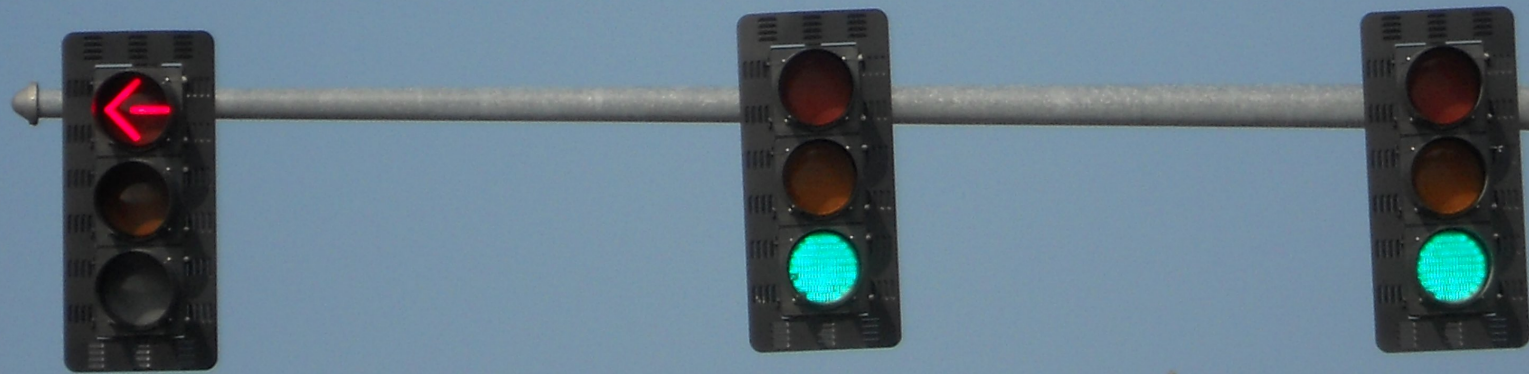


Red traffic light
Green traffic light
Green traffic light

DUNKIN' DONUTS

DRIVE THRU
TRY OUR BAKERY FRESH SANDWICHES FOR \$5.99

Carroll CONCRETE







13.00" / 32.0'
55KSI / 7 GA
10.00" / 39.0' / 7 GA

MISSISSQUOI ST













Donuts

DRIVE THRU
TRY OUR
BAKERY
SANDWICH
FOR \$2.99



A new twist on OREO.

New OREO Coolatta
Vanilla Bean

New OREO Donut

DUNKIN' DONUTS

BEAUDRY
CONCRETE





WEIGHT
LIMIT
24,000
POUNDS

30



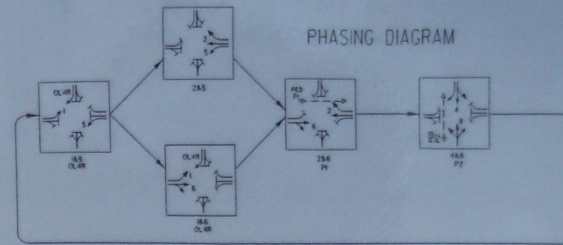
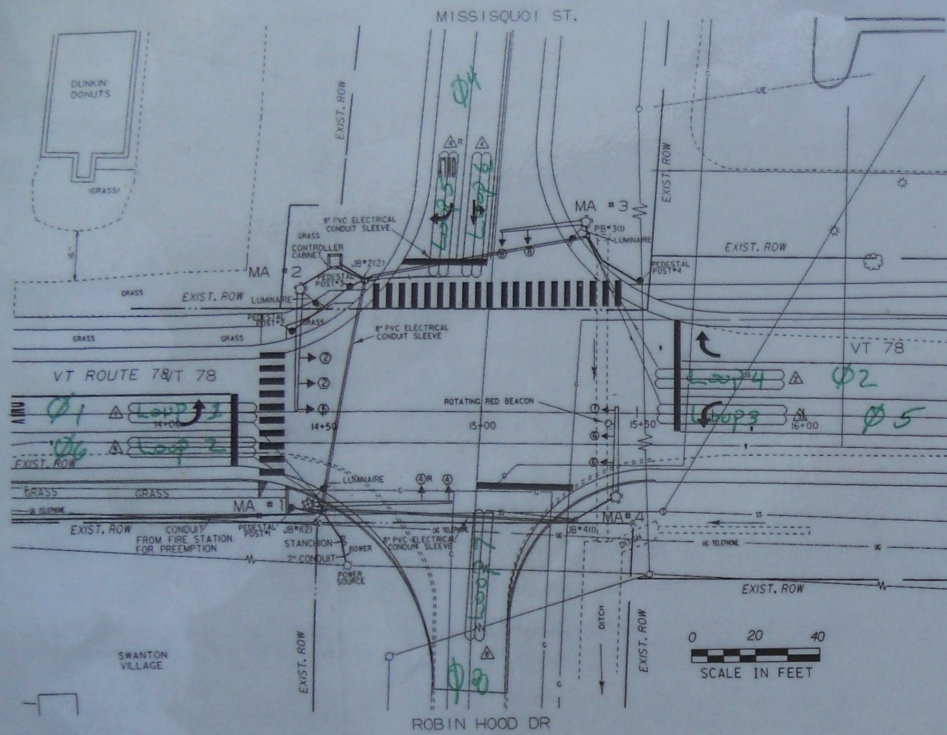


3000/32.0
5535/7GA
1000/45.0/7GA

DBW
8

1101

TURN ON DATE: 10-3-06

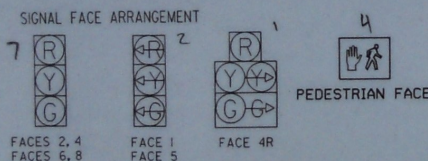


LOCAL PROGRAMMING		PHASE							
		1	2	3	4	5	6	7	8
MINIMUM GREEN		8.0	18.0	8.0	8.0	18.0	8.0		
EXTENSION		2.0	2.0	2.0	2.0	2.0	2.0		
YELLOW CLEARANCE		4.0	4.0	4.0	4.0	4.0	4.0		
ALL RED CLEARANCE		2.0	2.0	2.0	2.0	2.0	2.0		
MAX. GREEN I (AM PEAK)		16.0	34.0	16.0	16.0	34.0	16.0		
MAX. GREEN II (OFF PEAK)		16.0	28.0	16.0	16.0	28.0	16.0		
MAX. GREEN III (PM PEAK)		16.0	38.0	16.0	16.0	38.0	16.0		
WALK		-	8	8	-	8	8		
FLASHING DON'T WALK		-	13	13	-	13	13		
RECALL			27	13					
MEMORY									

WEEKDAY TIMINGS	
AM PEAK PERIOD	6:00 AM - 9:00 AM
OFF PEAK PERIOD	9:00 AM - 3:45 PM
PM PEAK PERIOD	6:00 PM - 6:00 AM
	3:45 PM - 6:00 PM

PHASE	TABLE OF CHANGE SEQUENCE																		
	1-5				1-6				2-5				2-6				4-8		
FACE	R/W	I-6	2-5	ALL OTHERS/R/W	I-5	2-6	ALL OTHERS/R/W	I-5	2-6	ALL OTHERS/R/W	I-6	2-5	ALL OTHERS/R/W	I-5	2-6	ALL OTHERS/R/W			
1	-	+	+	+	+	+	+	+	+	+	+	+	+	+	+	+	FR		
2	R	R	R	R	R	R	R	G	G	G	G	G	G	G	G	G	FY		
4	R	R	R	R	R	R	R	R	R	R	R	R	R	R	R	R	FR		
4R	R	R	R	R	R	R	R	R	R	R	R	R	R	R	R	R	FR		
5	+	+	+	+	+	+	+	+	+	+	+	+	+	+	+	+	FR		
6	R	R	C	Y	R	G	G	G	R	R	R	G	G	G	G	G	FY		
8	R	R	R	R	R	R	R	R	R	R	R	R	R	R	R	R	FR		
P1	D	W	D	W	D	W	D	W	D	W	D	W	D	W	D	W	B		
P2	D	W	D	W	D	W	D	W	D	W	D	W	D	W	D	W	B		
P3	D	W	D	W	D	W	D	W	D	W	D	W	D	W	D	W	B		

NOTE: W=WALK, FD=FLASH DON'T WALK, DW=DON'T WALK, B=BLANK
 * = INDICATIONS WILL BE WHEN THERE IS NO PEDESTRIAN ACTUATION
 ** = 12:00 AM - 6:00 AM



MISSISQUOI ST.				VT. 78			
AM	OFF	PM	SR	AM	OFF	PM	WB
205	533	29		87	249	158	
1067	2022	1303		674	1849	1582	
36	38	15		4	33	17	

ROBIN HOOD DR.			
AM	OFF	PM	WB
27	1	47	
44	5	26	
2	5	20	

AVERAGE WEEKDAY TRAFFIC

VEHICLE DETECTOR LOOPS										
LOOP NO.	LANE	CALL #	SIZE	TYPE & NO. TURNS	DELAY OR PRESENCE	DELAY TIME (SECS)	INDUCTANCE CALC. ACT.	RESISTANCE CALC. ACT.	LEAKAGE TO GROUND	LOCKING MEMORY
1	EB	1	6x40	DUAD/2-TURN	PRESENCE	370	0.97			YES
2	WB	2	6x40	DUAD/2-TURN	PRESENCE	372	1.00			NO
4	SB	4	6x40	DUAD/2-TURN	PRESENCE	350	0.72			NO
4A	SB	4	6x40	DUAD/2-TURN	PRESENCE	348	0.68			NO
5	WB	5	6x40	DUAD/2-TURN	PRESENCE	375	1.10			YES
6	EB	6	6x40	DUAD/2-TURN	PRESENCE	369	0.95			NO
8	NB	8	6x40	DUAD/2-TURN	PRESENCE	388	1.20			NO

NOTE: BACK PLATES TO BE INSTALLED

EXISTING	NEW	LEGEND
		UTILITY POLE
		LUMINAIRE
		WOOD POLE
		STRAIN POLE
		CONTROLLER CABINET
		PULLBOX/JUNCTION BOX
		SIGNAL HEAD
		CONDUIT
		VEHICLE LOOPS
		PEDESTAL POST
		STANCHION
		SWEEP

SIGNAL SHEET 1

PROJECT NAME: SWANTON
 PROJECT NUMBER: STPG ST 056-1(1)

FILE NAME: psw/00850/1583/signal.ctb

PLOT DATE: 13-APR-2006

NIC Program Steps

Step	Program	Step Begins	Pattern	Override
1	1	0600	0	NO
2	1	0900	0	NO
3	1	1545	0	NO
4	1	1800	0	NO
5	1	0000	0	NO
6	2	0600	0	NO
7	2	0000	0	NO

TOD Program Steps

 Step 1 Program 1 Step Begins 0600

Flash. Dimming Enable.
 Red Rest Alt Veh Extension
 Spare 5. Det Log Enable.
 Spare 3. Spare 4
 Type 0 Dly Enable. . . Spare 2
 Det Diag Plan. . . . 0

Phase Number

	1	2	3	4	5	6	7	8	9	10	11	12
Max 2 Enable
Max 3 Enable
Veh Recall
Veh Max Recall
Ped Recall
Cond Service Inhibit.
Phase Omit
Special Function

A B C D E F

Alt Sequence

Step 2 Program 1 Step Begins 0900

Flash. Dimming Enable.
 Red Rest Alt Veh Extension
 Spare 5. Det Log Enable.
 Spare 3. Spare 4
 Type 0 Dly Enable. . . Spare 2
 Det Diag Plan. . . . 0

Phase Number

	1	2	3	4	5	6	7	8	9	10	11	12
Max 2 Enable	X	X	.	X	X	X	.	X
Max 3 Enable
Veh Recall
Veh Max Recall
Ped Recall
Cond Service Inhibit.
Phase Omit
Special Function

A B C D E F

Alt Sequence

TOD Program Steps

Step 3 Program 1 Step Begins 1545

Flash. Dimming Enable.
Red Rest Alt Veh Extension
Spare 5. Det Log Enable.
Spare 3. Spare 4
Type 0 Dly Enable. . . Spare 2
Det Diag Plan. . . . 0

Table with 12 columns for Phase Number (1-12) and rows for Max 2 Enable, Max 3 Enable, Veh Recall, Veh Max Recall, Ped Recall, Cond Service Inhibit, Phase Omit, and Special Function.

Alt Sequence A B C D E F

Step 4 Program 1 Step Begins 1800

Flash. Dimming Enable.
Red Rest Alt Veh Extension
Spare 5. Det Log Enable.
Spare 3. Spare 4
Type 0 Dly Enable. . . Spare 2
Det Diag Plan. . . . 0

Table with 12 columns for Phase Number (1-12) and rows for Max 2 Enable, Max 3 Enable, Veh Recall, Veh Max Recall, Ped Recall, Cond Service Inhibit, Phase Omit, and Special Function.

Alt Sequence A B C D E F

TOD Program Steps

 Step 5 Program 1 Step Begins 0000

Flash. X Dimming Enable.
 Red Rest Alt Veh Extension
 Spare 5. Det Log Enable.
 Spare 3. Spare 4
 Type 0 Dly Enable. Spare 2
 Det Diag Plan. 0

Phase Number

	1	2	3	4	5	6	7	8	9	10	11	12
Max 2 Enable
Max 3 Enable
Veh Recall
Veh Max Recall
Ped Recall
Cond Service Inhibit.
Phase Omit
Special Function

A B C D E F

Alt Sequence

Step 6 Program 2 Step Begins 0600

Flash. Dimming Enable.
 Red Rest Alt Veh Extension
 Spare 5. Det Log Enable.
 Spare 3. Spare 4
 Type 0 Dly Enable. Spare 2
 Det Diag Plan. 0

Phase Number

	1	2	3	4	5	6	7	8	9	10	11	12
Max 2 Enable	X	X	.	X	X	X	.	X
Max 3 Enable
Veh Recall
Veh Max Recall
Ped Recall
Cond Service Inhibit.
Phase Omit
Special Function

A B C D E F

Alt Sequence

TOD Program Steps

Step 7 Program 2 Step Begins 0000

Flash.	X	Dimming Enable.	
Red Rest	Alt Veh Extension	
Spare 5.	Det Log Enable.	
Spare 3.	Spare 4	
Type 0 Dly Enable.	Spare 2	
Det Diag Plan.	0		

	Phase Number											
	1	2	3	4	5	6	7	8	9	10	11	12
Max 2 Enable
Max 3 Enable
Veh Recall
Veh Max Recall
Ped Recall
Cond Service Inhibit.
Phase Omit
Special Function

	A	B	C	D	E	F
Alt Sequence
