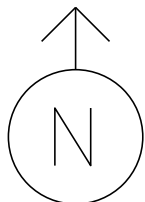


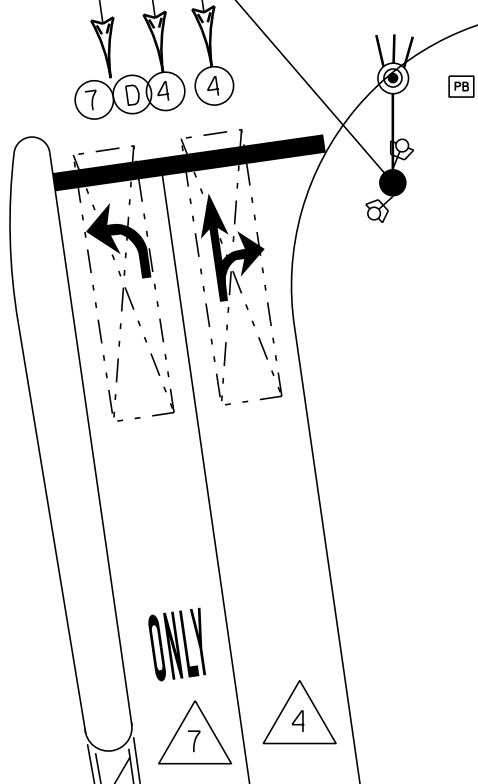
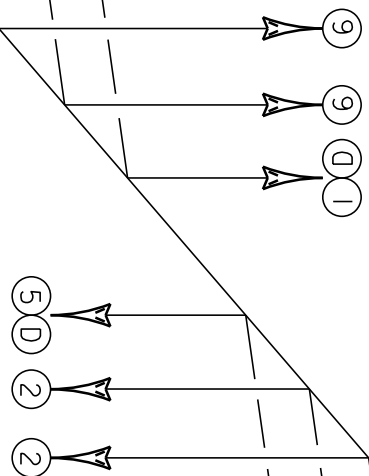
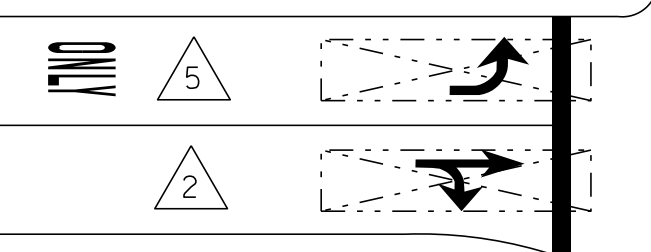
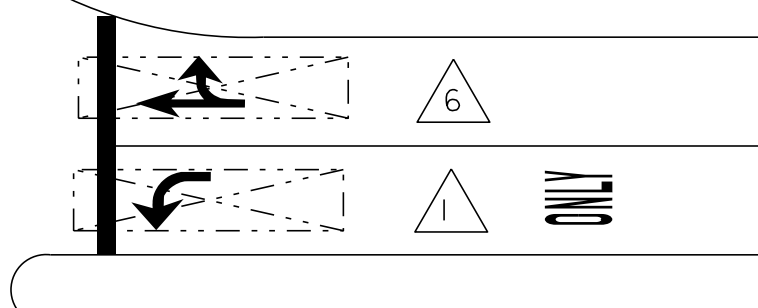
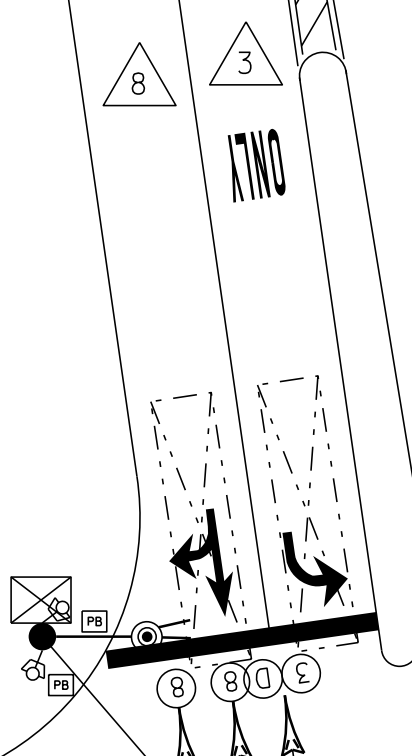
MS # 813



VT-104 NORTH

ST ALBANS HIGHWAY

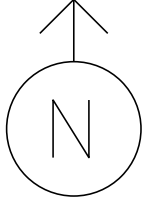
- RADAR DETECTOR
- CONTROL BOX
- RADAR DETECTION
- PULL BOX
- LUMINAIRE
- ROADWAY SIGN
- =
- =



ST ALBANS HIGHWAY

VT-104 SOUTH

MS # 813



VT-104 NORTH

ST ALBANS HIGHWAY

12'

11'

ONLY

LANE LINE 165'



STOP BAR 29'

12'

12'

STOP BAR 29'



LANE LINE 175'

14'

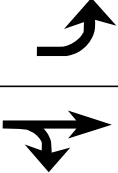
ONLY

13'

12'

ONLY

LANE LINE 220'



STOP BAR 25'

12'

12'

STOP BAR 31'



LANE LINE 125'

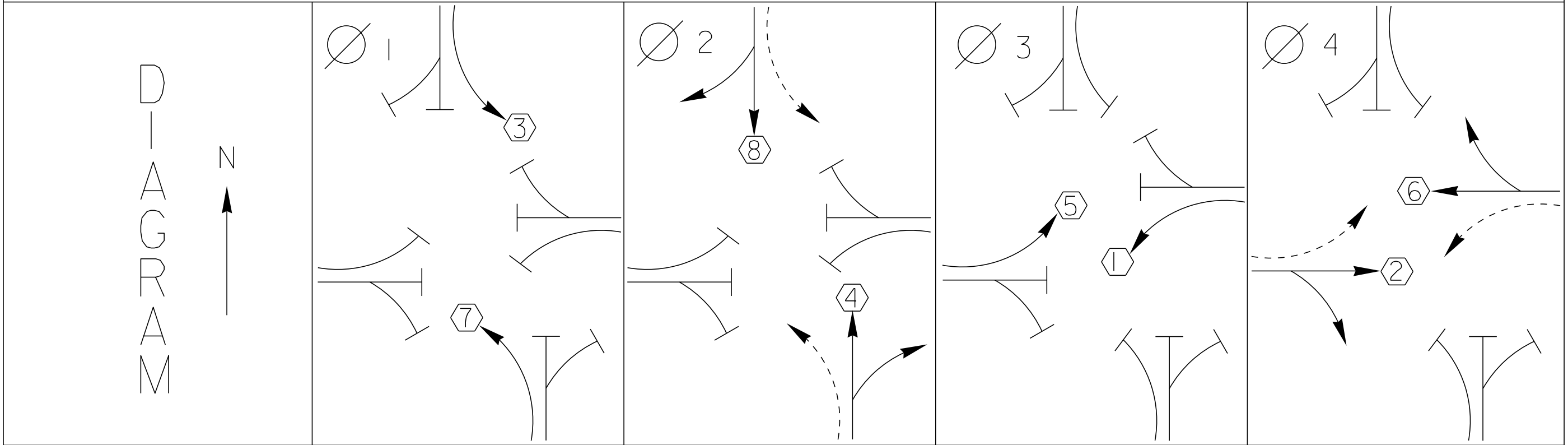
ONLY

11'

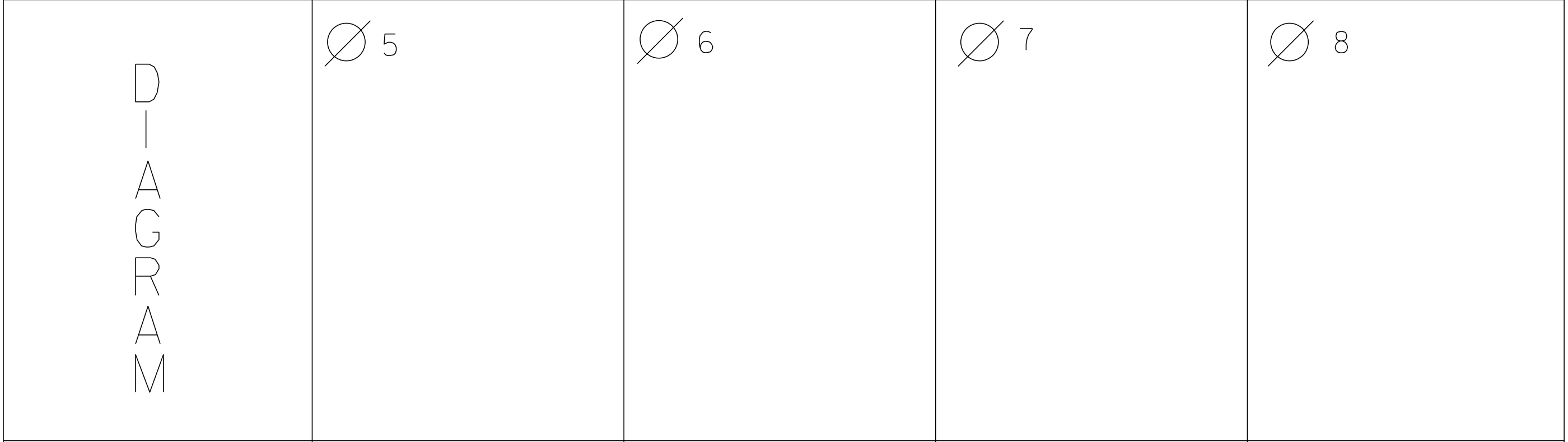
12'

ST ALBANS HIGHWAY

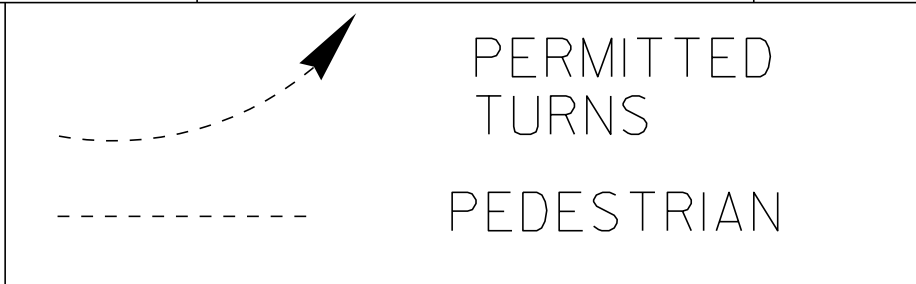
VT-104 SOUTH



TIMING	G = Y =	G = Y =	G = Y =	G = Y =
--------	------------	------------	------------	------------

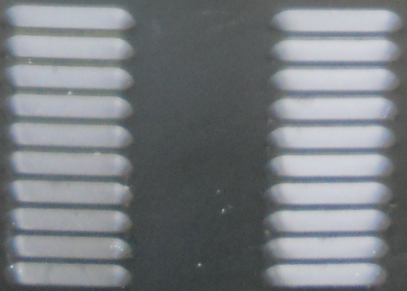


TIMING	G = Y =	G = Y =	G = Y =	G = Y =
--------	------------	------------	------------	------------



CYCLE LENGTH, C = _____ S

PROPERTY OF:
VT. AGENCY OF TRANS.
MAINTENANCE DIV.
IN EMERGENCY CALL:
DIST. TRANS. OFFICE
NIGHTS & WEEKENDS: [REDACTED]
INTERSECTION NO. [REDACTED]



PROPERTY OF:
VT. AGENCY OF TRANS.
MAINTENANCE DIV.

IN EMERGENCY CALL:
DIST. TRANS. OFFICE

NIGHTS & WEEKENDS:

INTERSECTION NO.

CONTROL
OFF

AUTO
FLASH

STOP
TIMING
AUTO
ON

TURN ON 11 12 OZ

DANGER
115 VOLTS A.C.

WARNING
DO NOT OPERATE
CABINET WITHOUT
CMU / MMU

ECONOLITE

13. 15. 16. 17. 18. 19. 20. 21. 22. 23. 24. 25. 26. 27. 28. 29. 30. 31. 32. 33. 34. 35. 36. 37. 38. 39. 40. 41. 42. 43. 44. 45. 46. 47. 48. 49. 50. 51. 52. 53. 54. 55. 56. 57. 58. 59. 60. 61. 62. 63. 64. 65. 66. 67. 68. 69. 70. 71. 72. 73. 74. 75. 76. 77. 78. 79. 80. 81. 82. 83. 84. 85. 86. 87. 88. 89. 90. 91. 92. 93. 94. 95. 96. 97. 98. 99. 100. 101. 102. 103. 104. 105. 106. 107. 108. 109. 110. 111. 112. 113. 114. 115. 116. 117. 118. 119. 120. 121. 122. 123. 124. 125. 126. 127. 128. 129. 130. 131. 132. 133. 134. 135. 136. 137. 138. 139. 140. 141. 142. 143. 144. 145. 146. 147. 148. 149. 150. 151. 152. 153. 154. 155. 156. 157. 158. 159. 160. 161. 162. 163. 164. 165. 166. 167. 168. 169. 170. 171. 172. 173. 174. 175. 176. 177. 178. 179. 180. 181. 182. 183. 184. 185. 186. 187. 188. 189. 190. 191. 192. 193. 194. 195. 196. 197. 198. 199. 200. 201. 202. 203. 204. 205. 206. 207. 208. 209. 210. 211. 212. 213. 214. 215. 216. 217. 218. 219. 220. 221. 222. 223. 224. 225. 226. 227. 228. 229. 230. 231. 232. 233. 234. 235. 236. 237. 238. 239. 240. 241. 242. 243. 244. 245. 246. 247. 248. 249. 250. 251. 252. 253. 254. 255. 256. 257. 258. 259. 260. 261. 262. 263. 264. 265. 266. 267. 268. 269. 270. 271. 272. 273. 274. 275. 276. 277. 278. 279. 280. 281. 282. 283. 284. 285. 286. 287. 288. 289. 290. 291. 292. 293. 294. 295. 296. 297. 298. 299. 300. 301. 302. 303. 304. 305. 306. 307. 308. 309. 310. 311. 312. 313. 314. 315. 316. 317. 318. 319. 320. 321. 322. 323. 324. 325. 326. 327. 328. 329. 330. 331. 332. 333. 334. 335. 336. 337. 338. 339. 340. 341. 342. 343. 344. 345. 346. 347. 348. 349. 350. 351. 352. 353. 354. 355. 356. 357. 358. 359. 360. 361. 362. 363. 364. 365. 366. 367. 368. 369. 370. 371. 372. 373. 374. 375. 376. 377. 378. 379. 380. 381. 382. 383. 384. 385. 386. 387. 388. 389. 390. 391. 392. 393. 394. 395. 396. 397. 398. 399. 400. 401. 402. 403. 404. 405. 406. 407. 408. 409. 410. 411. 412. 413. 414. 415. 416. 417. 418. 419. 420. 421. 422. 423. 424. 425. 426. 427. 428. 429. 430. 431. 432. 433. 434. 435. 436. 437. 438. 439. 440. 441. 442. 443. 444. 445. 446. 447. 448. 449. 450. 451. 452. 453. 454. 455. 456. 457. 458. 459. 460. 461. 462. 463. 464. 465. 466. 467. 468. 469. 470. 471. 472. 473. 474. 475. 476. 477. 478. 479. 480. 481. 482. 483. 484. 485. 486. 487. 488. 489. 490. 491. 492. 493. 494. 495. 496. 497. 498. 499. 500. 501. 502. 503. 504. 505. 506. 507. 508. 509. 510. 511. 512. 513. 514. 515. 516. 517. 518. 519. 520. 521. 522. 523. 524. 525. 526. 527. 528. 529. 530. 531. 532. 533. 534. 535. 536. 537. 538. 539. 540. 541. 542. 543. 544. 545. 546. 547. 548. 549. 550. 551. 552. 553. 554. 555. 556. 557. 558. 559. 560. 561. 562. 563. 564. 565. 566. 567. 568. 569. 570. 571. 572. 573. 574. 575. 576. 577. 578. 579. 580. 581. 582. 583. 584. 585. 586. 587. 588. 589. 590. 591. 592. 593. 594. 595. 596. 597. 598. 599. 600. 601. 602. 603. 604. 605. 606. 607. 608. 609. 610. 611. 612. 613. 614. 615. 616. 617. 618. 619. 620. 621. 622. 623. 624. 625. 626. 627. 628. 629. 630. 631. 632. 633. 634. 635. 636. 637. 638. 639. 640. 641. 642. 643. 644. 645. 646. 647. 648. 649. 650. 651. 652. 653. 654. 655. 656. 657. 658. 659. 660. 661. 662. 663. 664. 665. 666. 667. 668. 669. 670. 671. 672. 673. 674. 675. 676. 677. 678. 679. 680. 681. 682. 683. 684. 685. 686. 687. 688. 689. 690. 691. 692. 693. 694. 695. 696. 697. 698. 699. 700. 701. 702. 703. 704. 705. 706. 707. 708. 709. 710. 711. 712. 713. 714. 715. 716. 717. 718. 719. 720. 721. 722. 723. 724. 725. 726. 727. 728. 729. 730. 731. 732. 733. 734. 735. 736. 737. 738. 739. 740. 741. 742. 743. 744. 745. 746. 747. 748. 749. 750. 751. 752. 753. 754. 755. 756. 757. 758. 759. 760. 761. 762. 763. 764. 765. 766. 767. 768. 769. 770. 771. 772. 773. 774. 775. 776. 777. 778. 779. 780. 781. 782. 783. 784. 785. 786. 787. 788. 789. 790. 791. 792. 793. 794. 795. 796. 797. 798. 799. 800. 801. 802. 803. 804. 805. 806. 807. 808. 809. 810. 811. 812. 813. 814. 815. 816. 817. 818. 819. 820. 821. 822. 823. 824. 825. 826. 827. 828. 829. 830. 831. 832. 833. 834. 835. 836. 837. 838. 839. 840. 841. 842. 843. 844. 845. 846. 847. 848. 849. 850. 851. 852. 853. 854. 855. 856. 857. 858. 859. 860. 861. 862. 863. 864. 865. 866. 867. 868. 869. 870. 871. 872. 873. 874. 875. 876. 877. 878. 879. 880. 881. 882. 883. 884. 885. 886. 887. 888. 889. 890. 891. 892. 893. 894. 895. 896. 897. 898. 899. 900. 901. 902. 903. 904. 905. 906. 907. 908. 909. 910. 911. 912. 913. 914. 915. 916. 917. 918. 919. 920. 921. 922. 923. 924. 925. 926. 927. 928. 929. 930. 931. 932. 933. 934. 935. 936. 937. 938. 939. 940. 941. 942. 943. 944. 945. 946. 947. 948. 949. 950. 951. 952. 953. 954. 955. 956. 957. 958. 959. 960. 961. 962. 963. 964. 965. 966. 967. 968. 969. 970. 971. 972. 973. 974. 975. 976. 977. 978. 979. 980. 981. 982. 983. 984. 985. 986. 987. 988. 989. 990. 991. 992. 993. 994. 995. 996. 997. 998. 999. 1000.



204

BUS INTERFACE UNIT
POWER ON
TRANSMIT
VALID DATA
POR

Click! 114
4 Contact Outputs

WAVETRONIX

Click! 114
4 Contact Outputs

WAVETRONIX

Click! 114
4 Contact Outputs

WAVETRONIX

Click! 114
4 Contact Outputs

WAVETRONIX

PREEMPTOR BVPK3
PREEMPTOR BVPK4
NOT USED

1 L3
2 L4
3 L5
4 L6
5 L7
6 L8
7 L9
8 L10
9 L11
10 L12
11 L13
12 L14
13 L15

CABINET POWER SUPPLY

LIMIT FREQ. REFERENCE

+12 VDC
2.5 AMP
SLO-BLO

+24 VDC
2.5 AMP
SLO-BLO

12 VAC
2.0 AMP
SLO-BLO

115 VAC
1.5 AMP
SLO-BLO

ECONOLITE PRODUCTS, INC.

F1 MAIN MENU
F2 NEXT SCREEN
F3 SUB MENU
F4 NEXT DATA
F5 DISPLAY ADJUST
F6 NEXT PAGE
F7 STATUS DISPLAY
F8 HELP

1 2 3
4 5 6
7 8 9
0 CLEAR

ENTER

ECONOLITE CONTROL PRODUCTS, INC.

DSP ADJ

CONFLICT RED FAN CUM 24

1 CLEARANCE
2 Y-R CLEAR
3 DUAL INDIC
4 PORT
5 FIELD CHE
6 LOCAL M
7 DIAGN
8 PGM CAP

FIELD CHECK SERVICE

REQUIREMENT PULSE STATUS

OFF = ON OFF = ON OFF = ON

FIELD CHECK (QUIESCENT)

RESET

ECONOLITE CONTROL PRODUCTS, INC.

MMU-16E

RECEIVE
TRANSMIT

PROGRAM CARD

RS232C

PORT 3 PORT 1 PORT 2

ALM SDLC TERM

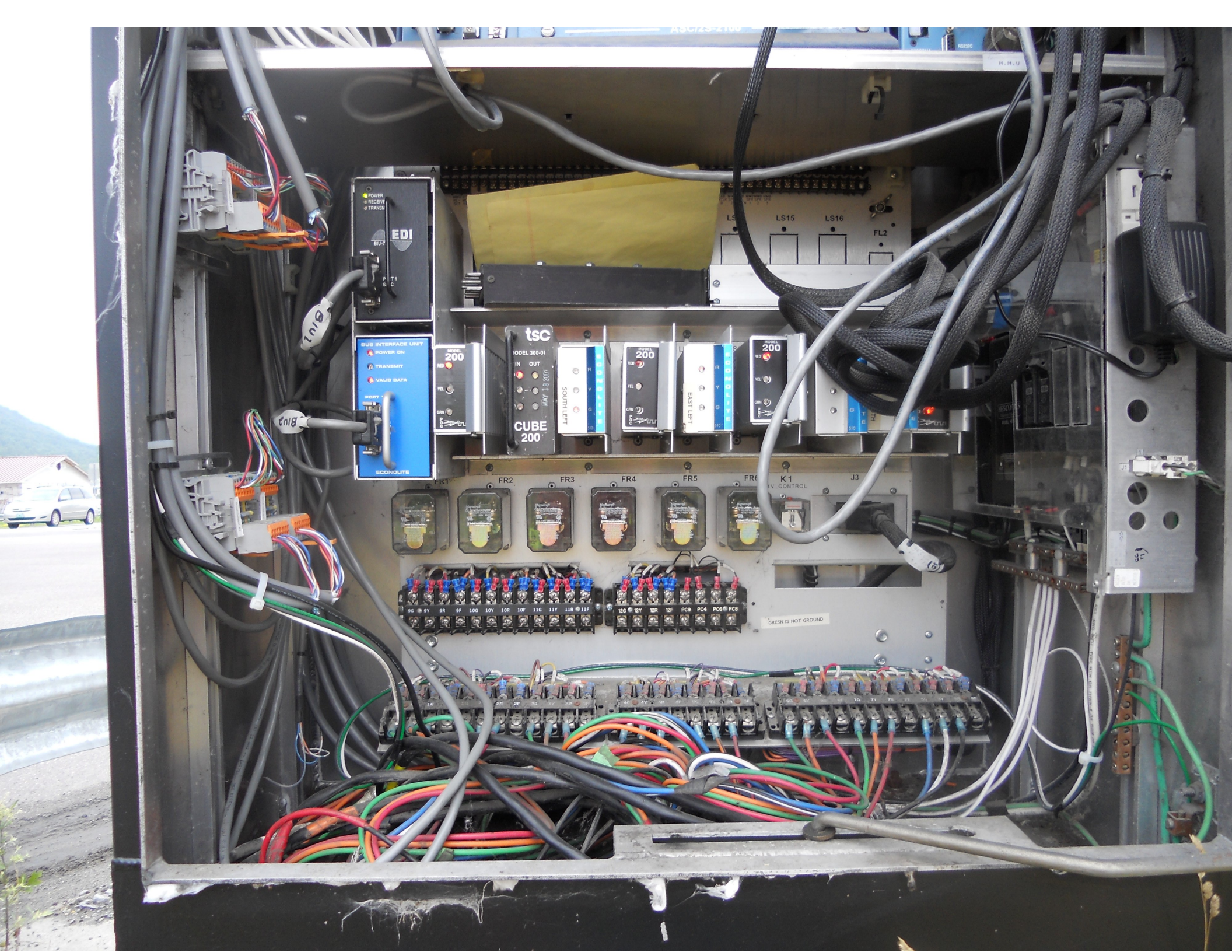
D C B A

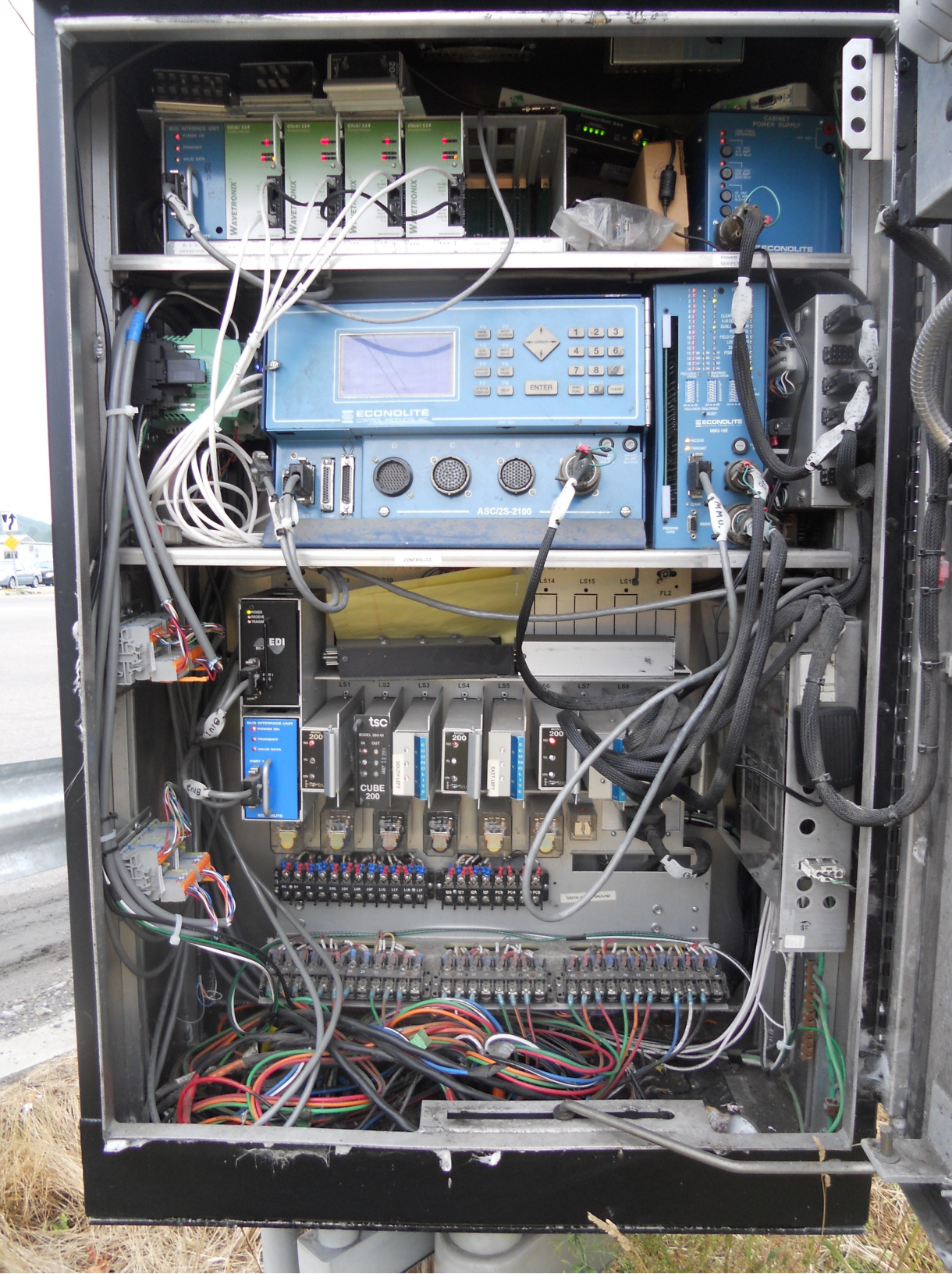
115 VAC 1 AMP SLO-BLO

24 VDC 3/4 AMP SLO-BLO

ASC/2S-2100

CONTROLLER





BUS INTERFACE UNIT

- POWER ON
- TRANSMIT
- VALID DATA

PORT

ECUNOLITE

Click! 114
4 Contact Closures

Channel 1 2 3 4

Menu 1 2 3 4

POWER TO RB

Mode-switch

WAVETRONIX™

RS-485 Bus 1 (Data)

RS-485 Bus 2 (Control)

Click! 114
4 Contact Closures

Channel 1 2 3 4

Menu 1 2 3 4

POWER TO RB

Mode-switch

WAVETRONIX™

RS-485 Bus 1 (Data)

RS-485 Bus 2 (Control)

Click! 114
4 Contact Closures

Channel 1 2 3 4

Menu 1 2 3 4

POWER TO RB

Mode-switch

WAVETRONIX™

RS-485 Bus 1 (Data)

RS-485 Bus 2 (Control)

Click! 114
4 Contact Closures

Channel 1 2 3 4

Menu 1 2 3 4

POWER TO RB

Mode-switch

WAVETRONIX™

RS-485 Bus 1 (Data)

RS-485 Bus 2 (Control)

B.I.U. DETECTOR #1

L3
L4

L7
L8

L5 -3
L6 8⁸³

L11
L10 4

L15
L16

L14

PREEMPTOR EVP3
EVP4

PREEMPTOR EVP5
EVP6

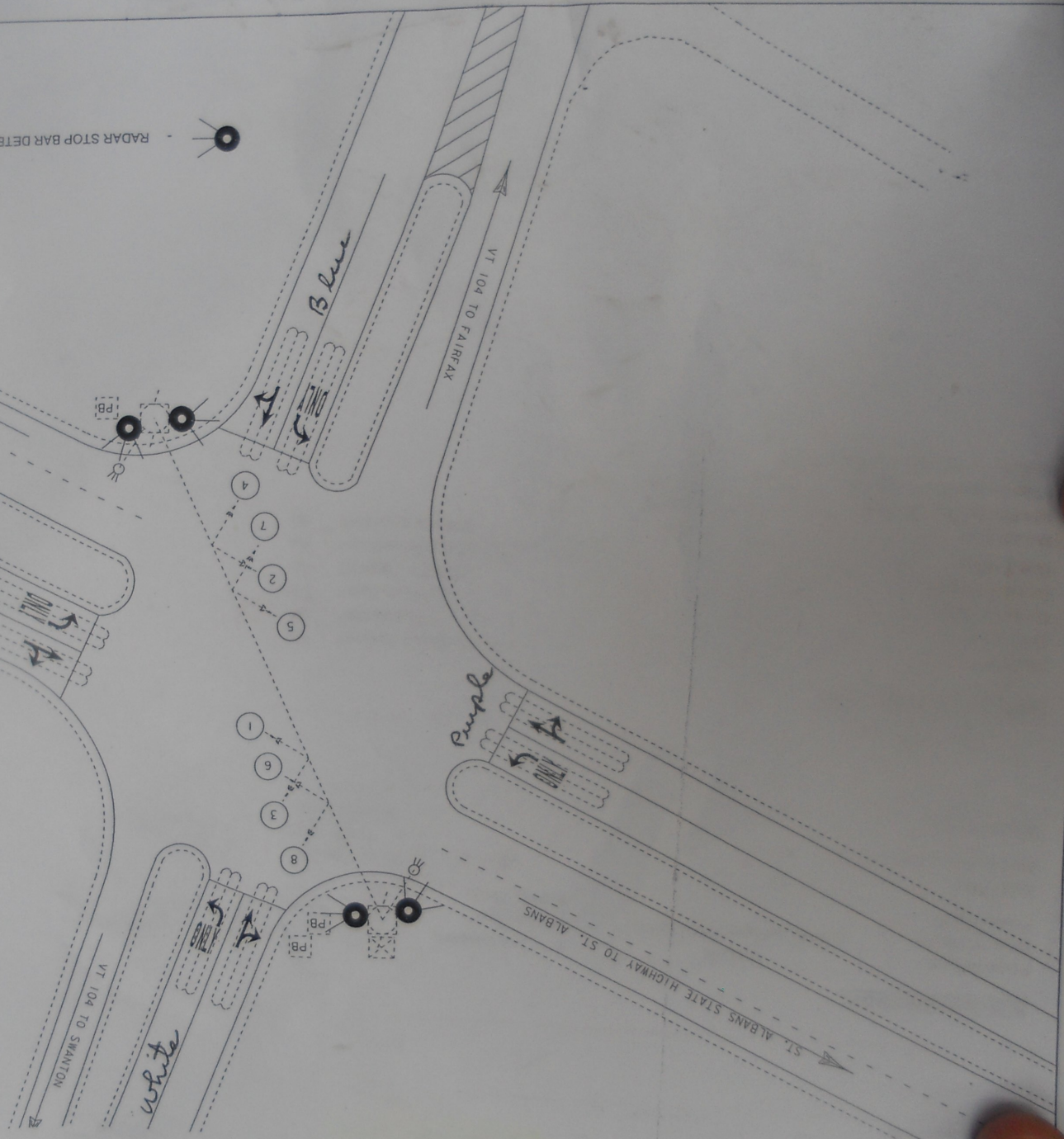
MODEL 204



F1
NEXT SCREEN

12-16-2011
 RADAR DETECTORS
 WHITE - SOUTH
 PURPLE - EAST
 BLUE - NORTH
 RED - WEST

RADAR STOP BAR DETECTION SENSOR



OriginalTurnOnDate
 GPSTime
 001.584
 V104-0613
 MajorRouteMileMarker
 Franklin
 0613
 MinorRoute

HAZARD OF ELECTRICAL SHOCK
OR BURN IF COVER REMOVED
SERVICE BY UTILITY
AUTHORIZED PERSONNEL ONLY
DO NOT PAINT OVER OR REMOVE THIS LABEL
FORM 10-11

75
YEARS
Milbank Mfg. Co.

R_r 13 8/9
KILOWATTHOURS

LANDIS & GYR

200 CL FORM 25 TA30 TYPE MS
240V K_v 7.2
3W 6.0 Hz

30298206

SINGLE STATOR WATTHOUR METER
Landis & Gyr Lafayette, Indiana U.S.A.

**VICE
NNECT**

HAZARD OF ELECTRICAL SHOCK
OR BURN IF COVER REMOVED
SERVICE BY UTILITY
AUTHORIZED PERSONNEL ONLY
DO NOT PAINT OVER OR REMOVE THIS LABEL
FORM 10-11





| | | |
|---------|------------|---------|
| NORTH | | |
| VERMONT | | |
| 104 | | |
| TO | TO | SOUTH |
| VERMONT | INTERSTATE | VERMONT |
| 105 | 89 | 104 |
| ← | ↑ | → |

White pickup truck driving away in the center lane.

Semi-truck on the left shoulder.

Small car on the right shoulder.

Truck on the right shoulder.

White building with a red roof on the right side of the road.



US 101
Dover
Wilmington





Swanton
Canada

Burlington







| | | |
|----|----|----|
| TO | TO | TO |
| | | |
| | | |

ONLY

NORTH
VERMONT
104

Savvy
 Local Food & Beverage
 100% handmade
 100% Vermont
 8am - 3pm
 See our menu
 with an 80% donation



ONLY



NORTH
VERMONT
104

Sorry
for not cleaning this station on
April 17th
Diesel Fuel & Scopes
will be available -
in the rear
5 a.m. - 9 p.m.
Give your station
with all NEW facilities



END











ONLY

St. Albans 10
Fairfax 10
Lebanon 10
Keene 10



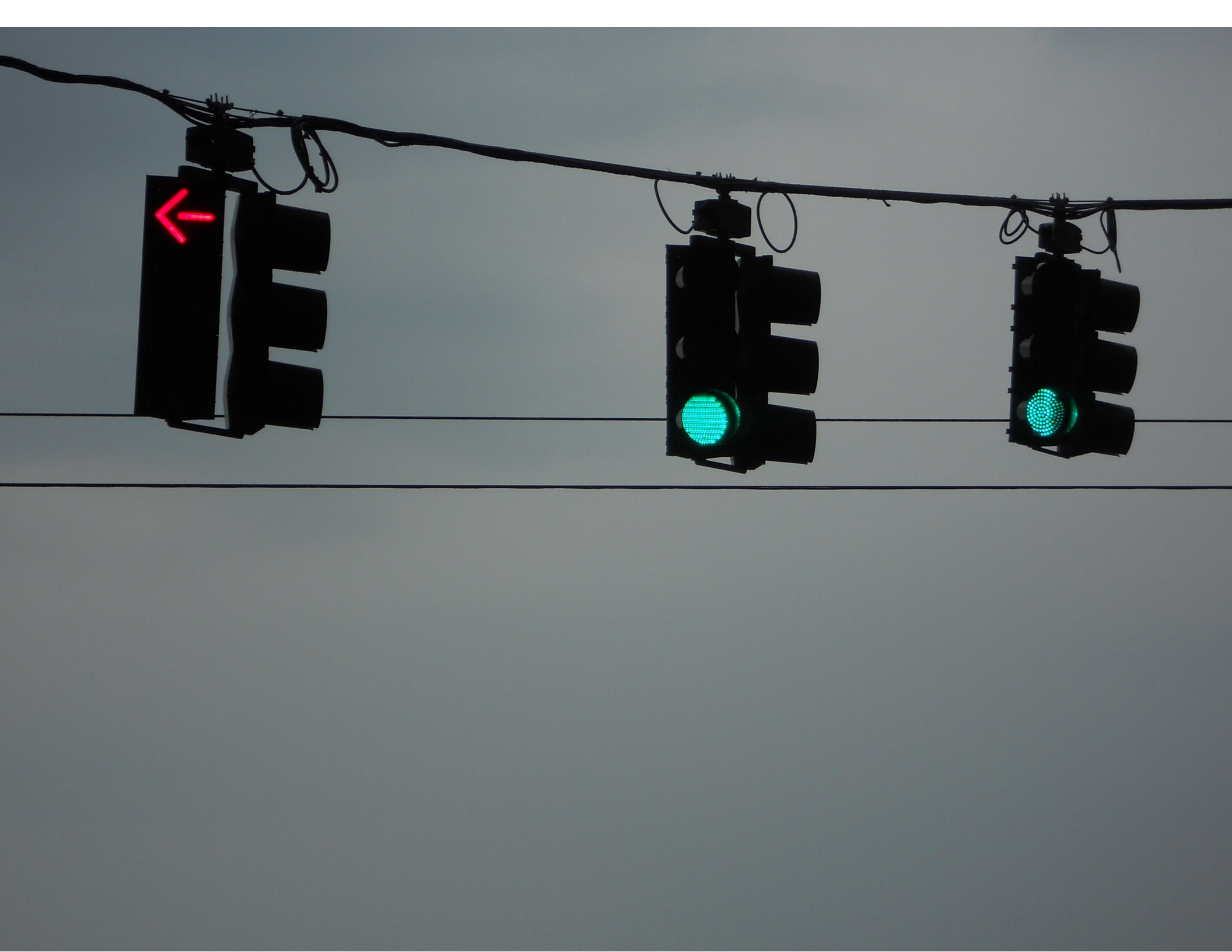
↑ St. Albans 1
← Fairfax 10
Enosburg 18 →
Richford 36 →

104 7 104
36 105

SOUTH TO NORTH
VERMONT 104 VERMONT 7 VERMONT 104
← ↑ →
TO TO
VERMONT 36 VERMONT 105
→ →







FAIRFAX RD



ONLY



| | | |
|------------------|----------------|----|
| TO | SOUTH | TO |
| INTERSTATE
89 | VERMONT
104 | 7 |
| ← | ↑ | → |



SENTRA
VOLVO
FBW 888

DEGREE

Yellow diamond warning sign

White arrow sign







NIC Program Steps

| Step | Program | Step Begins | Pattern | Override |
|------|---------|-------------|---------|----------|
| 1 | 1 | 0600 | 0 | NO |
| 2 | 1 | 0900 | 0 | NO |
| 3 | 1 | 1430 | 0 | NO |
| 4 | 1 | 1900 | 0 | NO |

TOD Program Steps

 Step 1 Program 1 Step Begins 0600

Flash. Dimming Enable.
 Red Rest Alt Veh Extension
 Spare 5. Det Log Enable.
 Spare 3. Spare 4
 Type 0 Dly Enable. . . Spare 2
 Det Diag Plan. . . . 0

Phase Number

| | 1 | 2 | 3 | 4 | 5 | 6 | 7 | 8 | 9 | 10 | 11 | 12 |
|-------------------------------|---|---|---|---|---|---|---|---|---|----|----|----|
| Max 2 Enable | . | . | . | . | . | . | . | . | . | . | . | . |
| Max 3 Enable | . | . | . | . | . | . | . | . | . | . | . | . |
| Veh Recall | . | . | . | . | . | . | . | . | . | . | . | . |
| Veh Max Recall | . | . | . | . | . | . | . | . | . | . | . | . |
| Ped Recall | . | . | . | . | . | . | . | . | . | . | . | . |
| Cond Service Inhibit. | . | . | . | . | . | . | . | . | . | . | . | . |
| Phase Omit | . | . | . | . | . | . | . | . | . | . | . | . |
| Special Function | . | . | . | . | . | . | . | . | . | . | . | . |

A B C D E F

Alt Sequence

Step 2 Program 1 Step Begins 0900

Flash. Dimming Enable.
 Red Rest Alt Veh Extension
 Spare 5. Det Log Enable.
 Spare 3. Spare 4
 Type 0 Dly Enable. . . Spare 2
 Det Diag Plan. . . . 0

Phase Number

| | 1 | 2 | 3 | 4 | 5 | 6 | 7 | 8 | 9 | 10 | 11 | 12 |
|-------------------------------|---|---|---|---|---|---|---|---|---|----|----|----|
| Max 2 Enable | X | X | X | X | X | X | X | X | . | . | . | . |
| Max 3 Enable | . | . | . | . | . | . | . | . | . | . | . | . |
| Veh Recall | . | . | . | . | . | . | . | . | . | . | . | . |
| Veh Max Recall | . | . | . | . | . | . | . | . | . | . | . | . |
| Ped Recall | . | . | . | . | . | . | . | . | . | . | . | . |
| Cond Service Inhibit. | . | . | . | . | . | . | . | . | . | . | . | . |
| Phase Omit | . | . | . | . | . | . | . | . | . | . | . | . |
| Special Function | . | . | . | . | . | . | . | . | . | . | . | . |

A B C D E F

Alt Sequence

TOD Program Steps

 Step 3 Program 1 Step Begins 1430

Flash. Dimming Enable.
 Red Rest Alt Veh Extension
 Spare 5. Det Log Enable.
 Spare 3. Spare 4
 Type 0 Dly Enable. . . Spare 2
 Det Diag Plan. . . . 0

| | Phase Number | | | | | | | | | | | |
|-------------------------------|--------------|---|---|---|---|---|---|---|---|----|----|----|
| | 1 | 2 | 3 | 4 | 5 | 6 | 7 | 8 | 9 | 10 | 11 | 12 |
| Max 2 Enable | . | . | . | . | . | . | . | . | . | . | . | . |
| Max 3 Enable | X | X | X | X | X | X | X | X | . | . | . | . |
| Veh Recall | . | . | . | . | . | . | . | . | . | . | . | . |
| Veh Max Recall | . | . | . | . | . | . | . | . | . | . | . | . |
| Ped Recall | . | . | . | . | . | . | . | . | . | . | . | . |
| Cond Service Inhibit. | . | . | . | . | . | . | . | . | . | . | . | . |
| Phase Omit | . | . | . | . | . | . | . | . | . | . | . | . |
| Special Function | . | . | . | . | . | . | . | . | . | . | . | . |

Alt Sequence A B C D E F

Step 4 Program 1 Step Begins 1900

Flash. Dimming Enable.
 Red Rest Alt Veh Extension
 Spare 5. Det Log Enable.
 Spare 3. Spare 4
 Type 0 Dly Enable. . . Spare 2
 Det Diag Plan. . . . 0

| | Phase Number | | | | | | | | | | | |
|-------------------------------|--------------|---|---|---|---|---|---|---|---|----|----|----|
| | 1 | 2 | 3 | 4 | 5 | 6 | 7 | 8 | 9 | 10 | 11 | 12 |
| Max 2 Enable | X | X | X | X | X | X | X | X | . | . | . | . |
| Max 3 Enable | . | . | . | . | . | . | . | . | . | . | . | . |
| Veh Recall | . | . | . | . | . | . | . | . | . | . | . | . |
| Veh Max Recall | . | . | . | . | . | . | . | . | . | . | . | . |
| Ped Recall | . | . | . | . | . | . | . | . | . | . | . | . |
| Cond Service Inhibit. | . | . | . | . | . | . | . | . | . | . | . | . |
| Phase Omit | . | . | . | . | . | . | . | . | . | . | . | . |
| Special Function | . | . | . | . | . | . | . | . | . | . | . | . |

Alt Sequence A B C D E F
