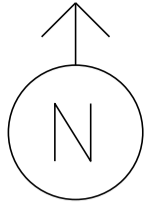


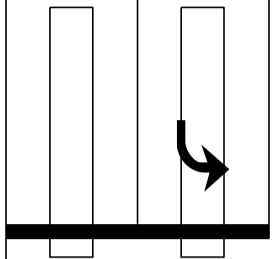
MS # 638



VT 100 NORTH



VIDEO



▽ VIDEO CAMERA

⊠ CONTROL BOX

⊞ COORDINATION

▭ VIDEO DETECTION

⊞ PB PULL BOX

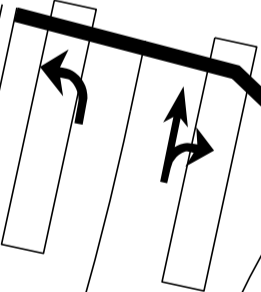
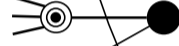
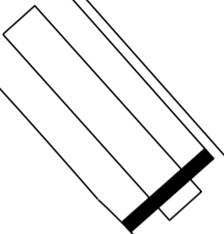
—○— LUMINAIRE

●● STANCHION

⊞ =

⊞ =

BLUSH HILL



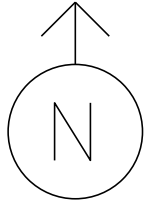
ONLY

STOWE ST.

VT 100 SOUTH

NOT TO SCALE

MS # 638



VT 100 NORTH

12' 12' 12'

ONLY
LANE LINE 75'



STOP BAR 24'

20'

12'

BLUSH HILL

STOP BAR 12'

STOP BAR 14'

STOP BAR 22'

STOP BAR 12'

12'

12'

STOWE ST.

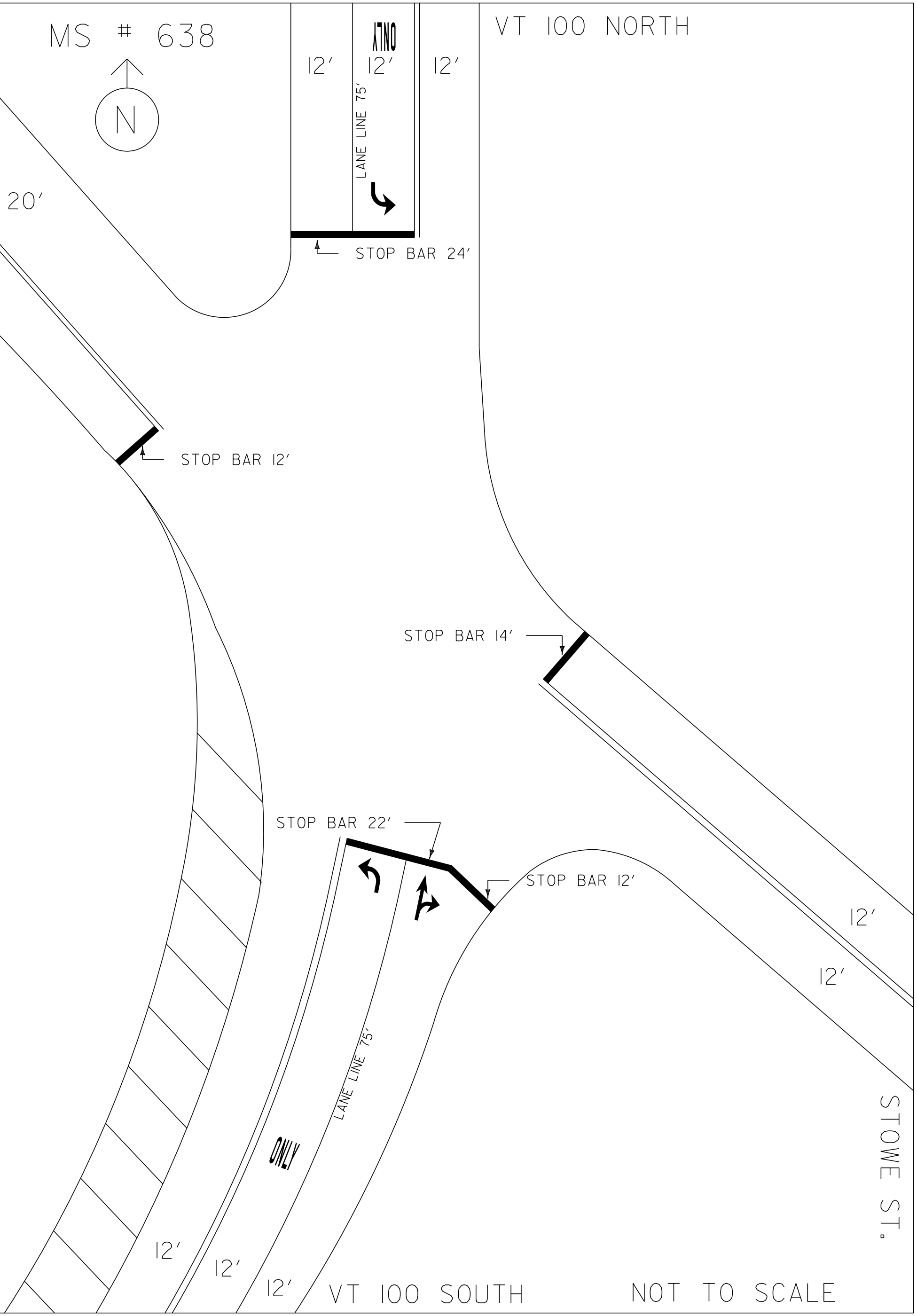
12'

12'

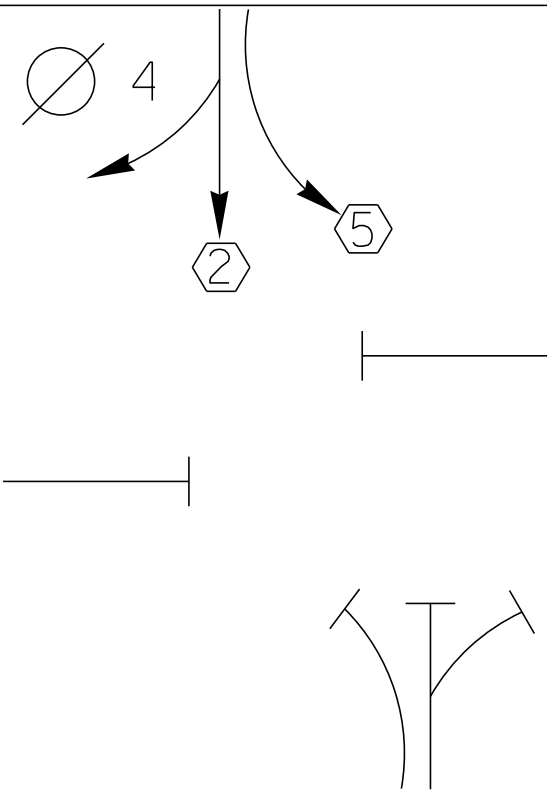
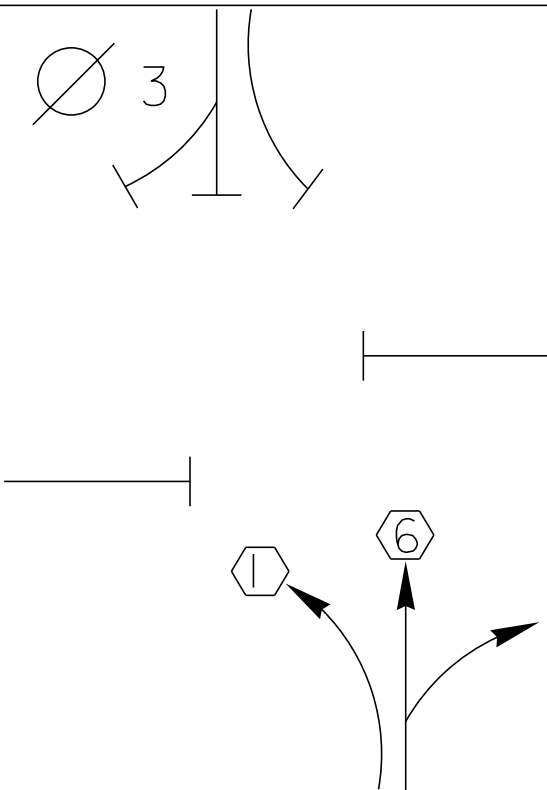
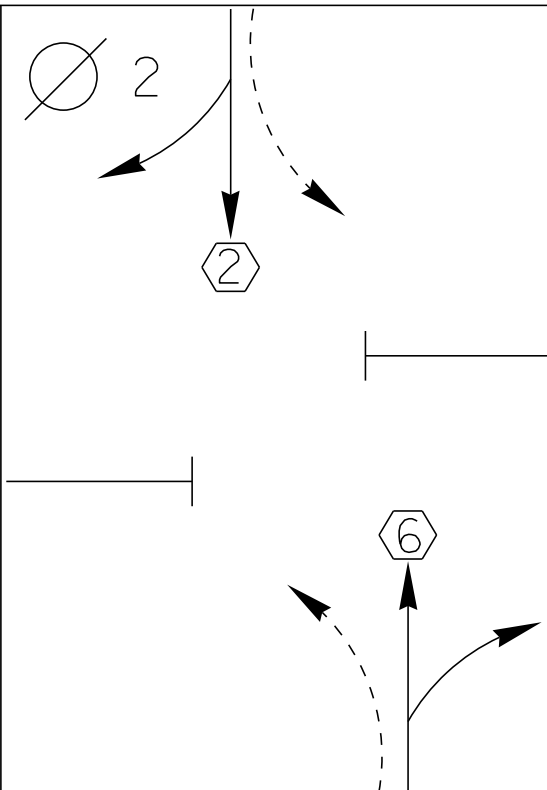
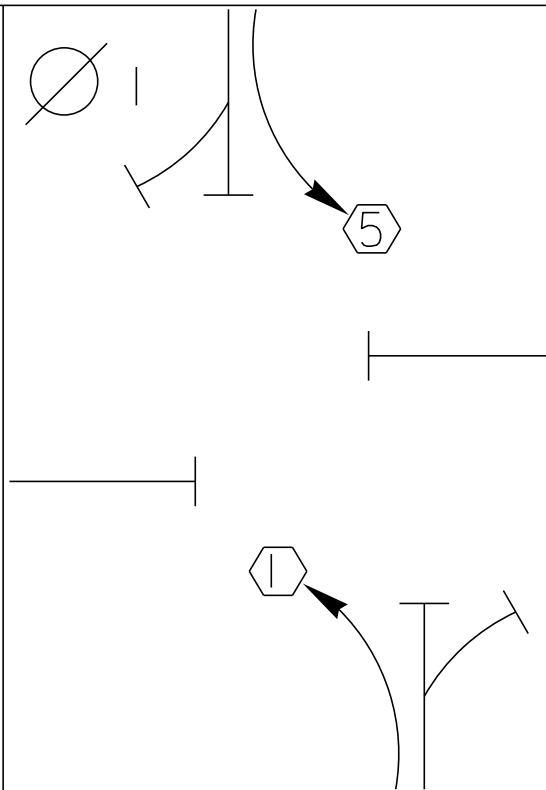
12'

VT 100 SOUTH

NOT TO SCALE



D
I
A
G
R
A
M



TIMING

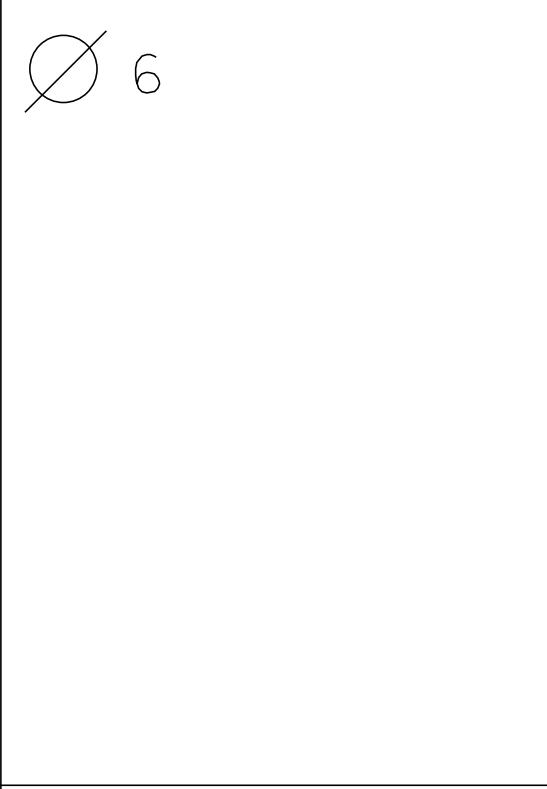
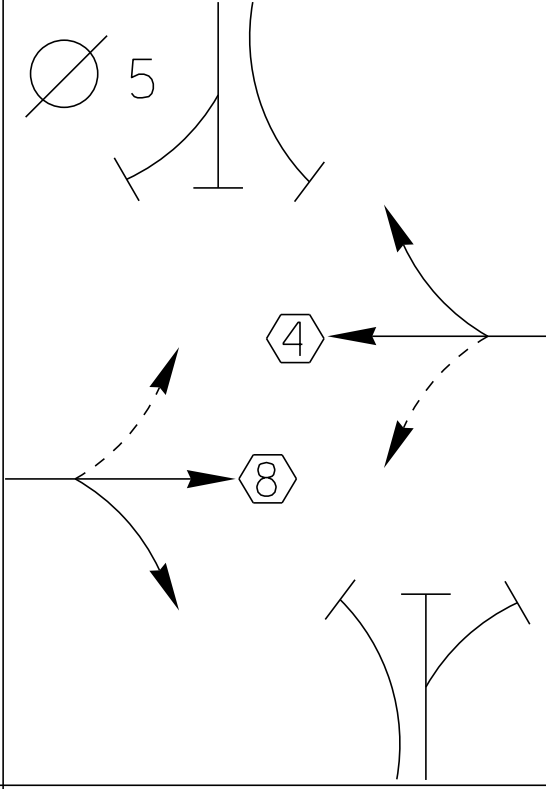
G =
Y =

G =
Y =

G =
Y =

G =
Y =

D
I
A
G
R
A
M



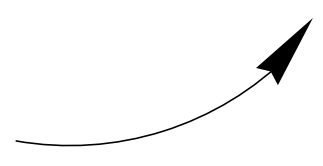
TIMING

G =
Y =

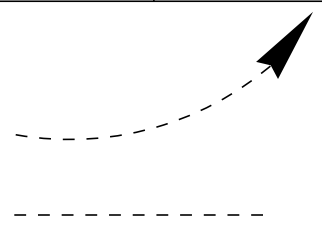
G =
Y =

G =
Y =

G =
Y =



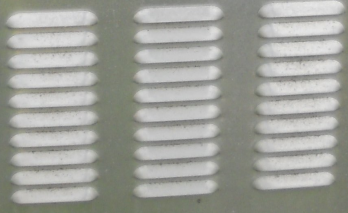
PROTECTED
TURNS

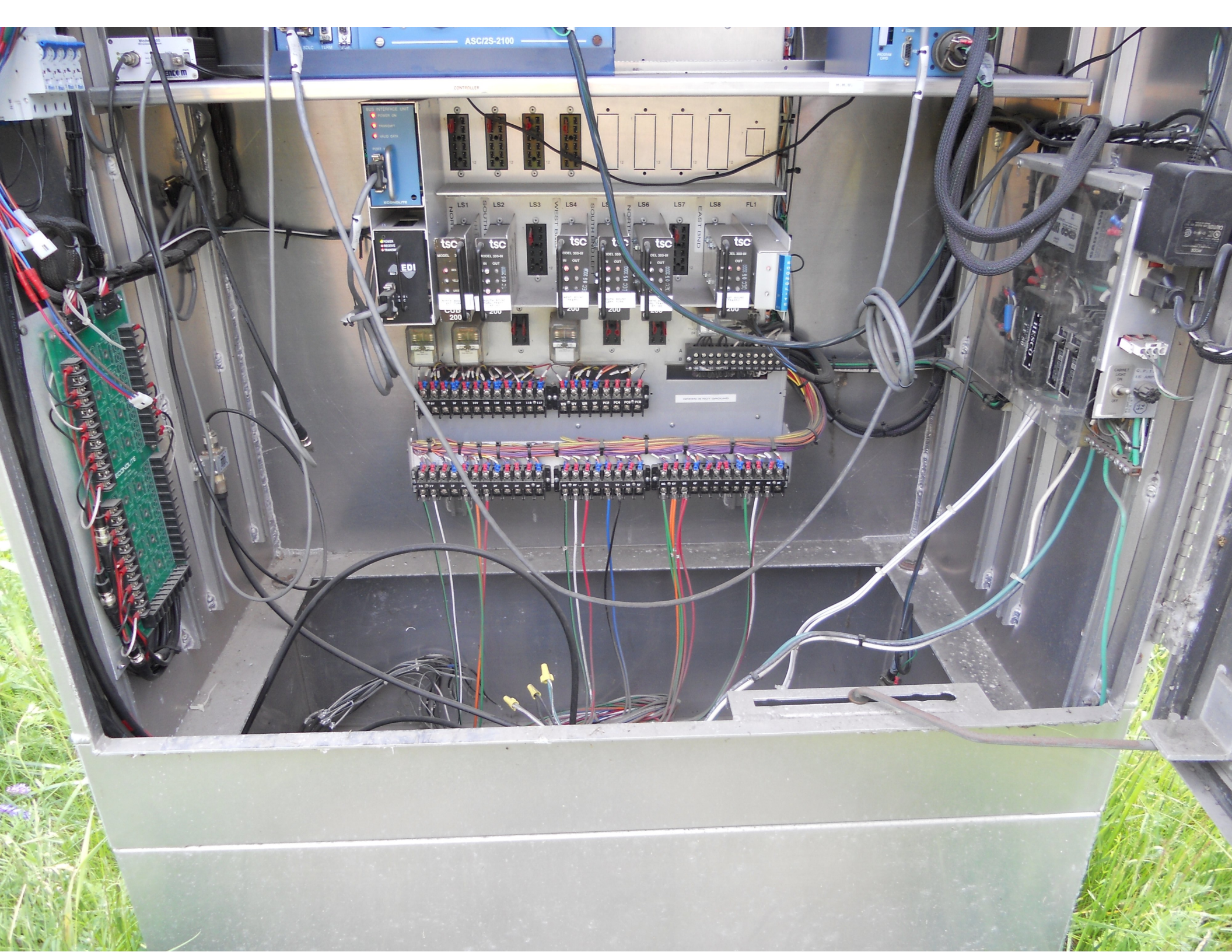


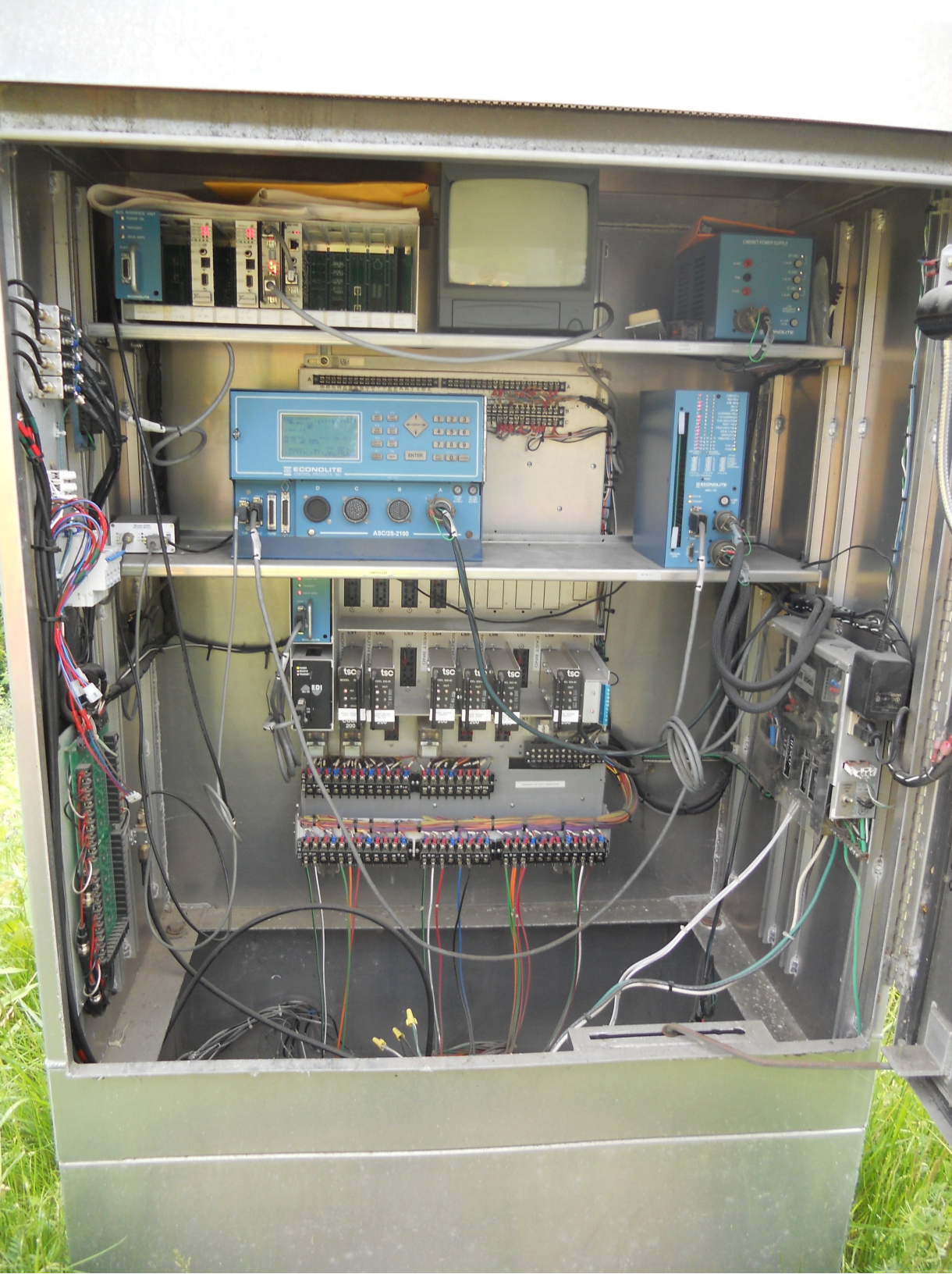
PERMITTED
TURNS
PEDESTRIAN

CYCLE LENGTH, C= _____ S

PROPERTY OF:
VT. AGENCY OF TRANS.
MAINTENANCE DIV.
IN EMERGENCY CALL:
DIST. TRANS. OFFICE
NIGHTS & WEEKENDS: _____
INTERSECTION NO. _____













LEFT TURN
YIELD
ON GREEN

STONE ST

BLISS HILL RD

DE-16 X30'
55KSI
YEAR OF MFG. 2001
UNION METAL CORPORATION



















LEFT TURN
YIELD
ON GREEN

SPEED
LIMIT
25

LEGAL LOAD
LIMIT
24,000
POUNDS

TRUCK STOP
REST AREA









ONLY

PARK & RIDE

ONLY







LEFT TURN
YIELD
ON GREEN

BLUSH HILL RD

The Wandering
Moose
Restaurant
open
5:30-9:30

1000
1218
0067



LEFT TURN
YIELD
ON GREEN



7

JCT
89

Coordination Patterns

```

-----
Pattern 1
Cycle Length . . 100  COS . . . . . 111
Offset . . . . . 84
Vehicle Permissive . . [1] 0 [2] 0
Vehicle Perm 2 Displacement 0 Phase Reservice. . NO
Splits: Phase 1- 22 2- 54 3- 0 4- 24
          Phase 5- 22 6- 54 7- 0 8- 24
          Phase 9- 0 10- 0 11- 0 12- 0 Split Sum: 0
Split Extension/Ring [1] 0 [2] 0
Split Demand Pattern [1] 0 [2] 0
XRT Pattern. . . 0
Phase Number: 1 2 3 4 5 6 7 8 9 10 11 12
Coord Phases . . . X . . . X . . . . .
Veh Recall . . . . .
Veh Max Recall . . . . .
Ped Recall . . . . .
Veh Omit . . . . .
Alt Sequence . . A: . B: . C: . D: . E: . F: .
-----
    
```

```

-----
Pattern 2
Cycle Length . . 120  COS . . . . . 211
Offset . . . . . 114
Vehicle Permissive . . [1] 0 [2] 0
Vehicle Perm 2 Displacement 0 Phase Reservice. . NO
Splits: Phase 1- 14 2- 78 3- 0 4- 28
          Phase 5- 14 6- 78 7- 0 8- 28
          Phase 9- 0 10- 0 11- 0 12- 0 Split Sum: 0
Split Extension/Ring [1] 0 [2] 0
Split Demand Pattern [1] 0 [2] 0
XRT Pattern. . . 0
Phase Number: 1 2 3 4 5 6 7 8 9 10 11 12
Coord Phases . . . X . . . X . . . . .
Veh Recall . . . . .
Veh Max Recall . . . . .
Ped Recall . . . . .
Veh Omit . . . . .
Alt Sequence . . A: . B: . C: . D: . E: . F: .
-----
    
```


NIC Program Steps

Step	Program	Step Begins	Pattern	Override
1	1	0600	1	NO
2	1	1500	2	NO
3	1	1800	1	NO
4	1	1900	3	NO
5	2	0600	1	NO
6	2	0000	0	NO

TOD Program Steps

 Step 1 Program 1 Step Begins 0600

Flash. Dimming Enable.
 Red Rest Alt Veh Extension
 Spare 5. Det Log Enable.
 Spare 3. Spare 4
 Type 0 Dly Enable. . . Spare 2
 Det Diag Plan. . . . 0

	Phase Number											
	1	2	3	4	5	6	7	8	9	10	11	12
Max 2 Enable
Max 3 Enable
Veh Recall
Veh Max Recall
Ped Recall
Cond Service Inhibit.
Phase Omit
Special Function

Alt Sequence A B C D E F

Step 2 Program 1 Step Begins 1500

Flash. Dimming Enable.
 Red Rest Alt Veh Extension
 Spare 5. Det Log Enable.
 Spare 3. Spare 4
 Type 0 Dly Enable. . . Spare 2
 Det Diag Plan. . . . 0

	Phase Number											
	1	2	3	4	5	6	7	8	9	10	11	12
Max 2 Enable	X	X	.	X	X	X	.	X
Max 3 Enable
Veh Recall
Veh Max Recall
Ped Recall
Cond Service Inhibit.
Phase Omit
Special Function

Alt Sequence A B C D E F

TOD Program Steps

 Step 3 Program 1 Step Begins 1800

Flash. Dimming Enable.
 Red Rest Alt Veh Extension
 Spare 5. Det Log Enable.
 Spare 3. Spare 4
 Type 0 Dly Enable. . . Spare 2
 Det Diag Plan. . . . 0

	Phase Number											
	1	2	3	4	5	6	7	8	9	10	11	12
Max 2 Enable
Max 3 Enable
Veh Recall
Veh Max Recall
Ped Recall
Cond Service Inhibit.
Phase Omit
Special Function

	A	B	C	D	E	F
Alt Sequence

 Step 4 Program 1 Step Begins 1900

Flash. Dimming Enable.
 Red Rest Alt Veh Extension
 Spare 5. Det Log Enable.
 Spare 3. Spare 4
 Type 0 Dly Enable. . . Spare 2
 Det Diag Plan. . . . 0

	Phase Number											
	1	2	3	4	5	6	7	8	9	10	11	12
Max 2 Enable
Max 3 Enable
Veh Recall
Veh Max Recall
Ped Recall
Cond Service Inhibit.
Phase Omit
Special Function

	A	B	C	D	E	F
Alt Sequence

TOD Program Steps

 Step 5 Program 2 Step Begins 0600

Flash. Dimming Enable.
 Red Rest Alt Veh Extension
 Spare 5. Det Log Enable.
 Spare 3. Spare 4
 Type 0 Dly Enable. . . Spare 2
 Det Diag Plan. . . . 0

	Phase Number											
	1	2	3	4	5	6	7	8	9	10	11	12
Max 2 Enable
Max 3 Enable
Veh Recall
Veh Max Recall
Ped Recall
Cond Service Inhibit.
Phase Omit
Special Function

Alt Sequence A B C D E F

Step 6 Program 2 Step Begins 0000

Flash. Dimming Enable.
 Red Rest Alt Veh Extension
 Spare 5. Det Log Enable.
 Spare 3. Spare 4
 Type 0 Dly Enable. . . Spare 2
 Det Diag Plan. . . . 0

	Phase Number											
	1	2	3	4	5	6	7	8	9	10	11	12
Max 2 Enable
Max 3 Enable
Veh Recall
Veh Max Recall
Ped Recall
Cond Service Inhibit.
Phase Omit
Special Function

Alt Sequence A B C D E F
