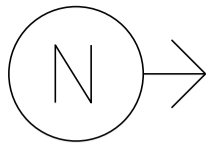


MS # 635

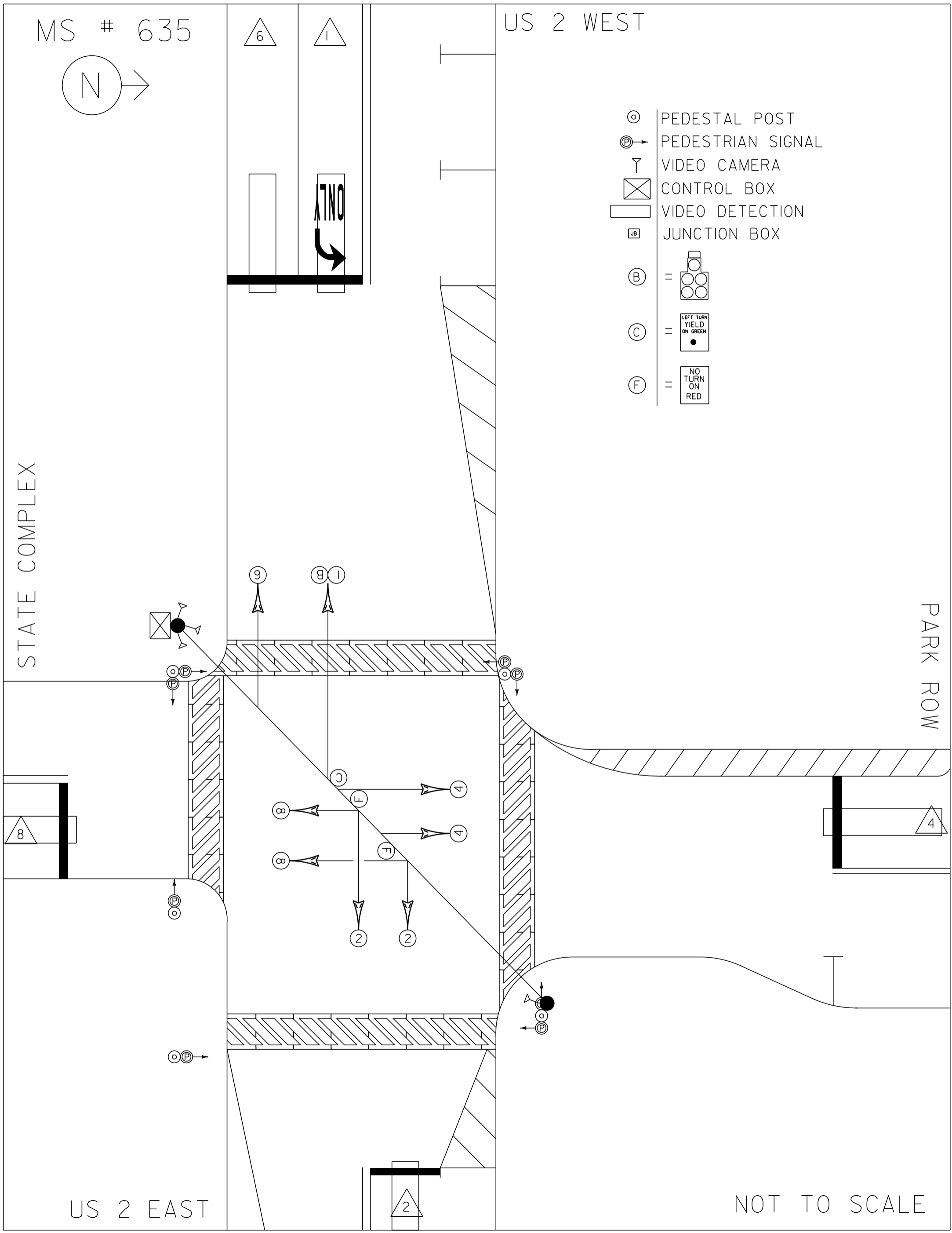


US 2 WEST

- ⊙ PEDESTAL POST
- ⊙→ PEDESTRIAN SIGNAL
- ▽ VIDEO CAMERA
- ⊠ CONTROL BOX
- ▭ VIDEO DETECTION
- ⊠ JB JUNCTION BOX
- ⊙ =
- ⊙ =
- ⊙ =

STATE COMPLEX

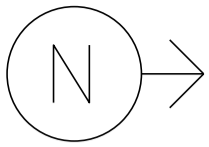
PARK ROW



US 2 EAST

NOT TO SCALE

MS # 635



12'

12'

13'

US 2 WEST

LANE LINE 55'

ONLY



STOP BAR 25'

STATE COMPLEX

PARK ROW

CROSSWALK 40'

13'

STOP BAR 13'

13'

CROSSWALK 45'

CROSSWALK 50'

STOP BAR 13'

13'

13'

CROSSWALK 35'

STOP BAR 12'

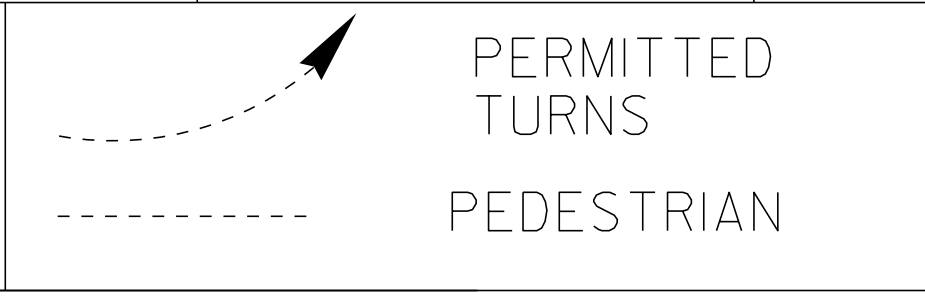
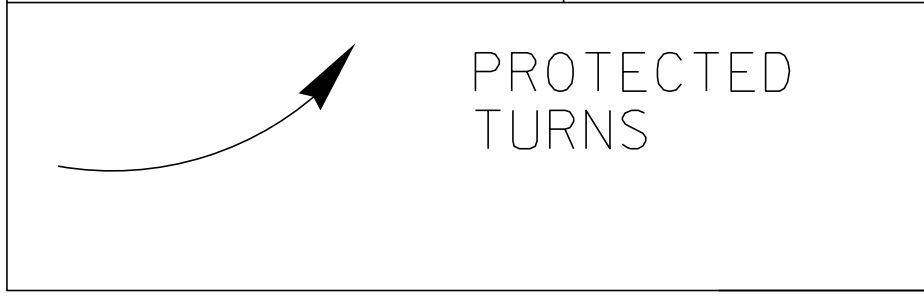
US 2 EAST

12'

12'

NOT TO SCALE

<p style="writing-mode: vertical-rl; transform: rotate(180deg);">D I A G R A M</p> <p style="text-align: right;">N</p>				
<p>TIMING</p>	<p>G = Y =</p>	<p>G = Y =</p>	<p>G = Y =</p>	<p>G = Y =</p>
<p style="writing-mode: vertical-rl; transform: rotate(180deg);">D I A G R A M</p>				
<p>TIMING</p>	<p>G = Y =</p>	<p>G = Y =</p>	<p>G = Y =</p>	<p>G = Y =</p>



CYCLE LENGTH, C = _____ S



CONTROL
EQUIP. ON



CONTROL
EQUIP. OFF



AUTO

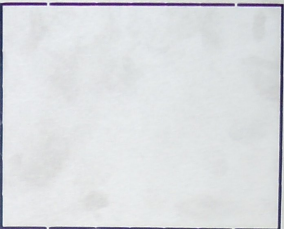
FLASH



STOP TIMING
AUTO



STOP TIMING
ON



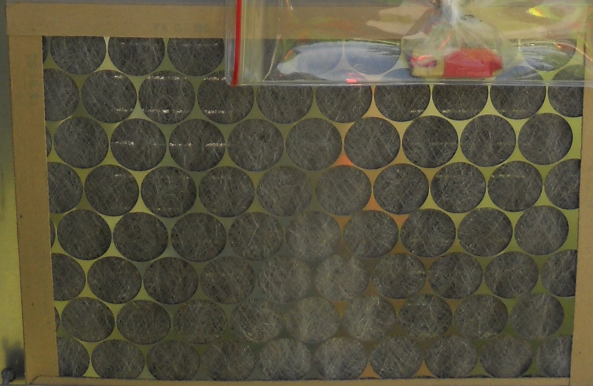
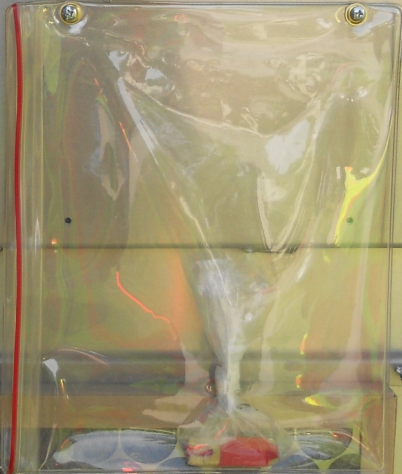
DANGER

115 VOLTS A.C.

WARNING

DO NOT OPERATE
CABINET WITH
CMU / MMU

SECONDLITE
MODEL NO. 12345
SERIAL NO. 67890
DATE 01-30-2001



CONTROLLER

M.M.U.

BUS INTERFACE UNIT

- POWER ON
- TRANSMIT
- VALID DATA

PORT 1

ECNOLITE

MODEL SSS-86-I/O

- RED IN
- RED OUT
- YEL IN
- YEL OUT
- GRN IN
- GRN OUT

MODEL SSS-86-I/O

- RED IN
- RED OUT
- YEL IN
- YEL OUT
- GRN IN
- GRN OUT

MODEL SSS-86-I/O

- RED IN
- RED OUT
- YEL IN
- YEL OUT
- GRN IN
- GRN OUT

MODEL SSS-86-I/O

- RED IN
- RED OUT
- YEL IN
- YEL OUT
- GRN IN
- GRN OUT

MODEL SSS-86-I/O

- RED IN
- RED OUT
- YEL IN
- YEL OUT
- GRN IN
- GRN OUT

MODEL SSS-86-I/O

- RED IN
- RED OUT
- YEL IN
- YEL OUT
- GRN IN
- GRN OUT

MODEL SSS-86-I/O

- RED IN
- RED OUT
- YEL IN
- YEL OUT
- GRN IN
- GRN OUT

MODEL SSS-86-I/O

- RED IN
- RED OUT
- YEL IN
- YEL OUT
- GRN IN
- GRN OUT

MODEL SSS-86-I/O

- RED IN
- RED OUT
- YEL IN
- YEL OUT
- GRN IN
- GRN OUT

MODEL SSS-86-I/O

- RED IN
- RED OUT
- YEL IN
- YEL OUT
- GRN IN
- GRN OUT

MODEL SSS-86-I/O

- RED IN
- RED OUT
- YEL IN
- YEL OUT
- GRN IN
- GRN OUT

MODEL SSS-86-I/O

- RED IN
- RED OUT
- YEL IN
- YEL OUT
- GRN IN
- GRN OUT

MODEL SSS-86-I/O

- RED IN
- RED OUT
- YEL IN
- YEL OUT
- GRN IN
- GRN OUT

MODEL SSS-86-I/O

- RED IN
- RED OUT
- YEL IN
- YEL OUT
- GRN IN
- GRN OUT

MODEL SSS-86-I/O

- RED IN
- RED OUT
- YEL IN
- YEL OUT
- GRN IN
- GRN OUT

90 91 9R 9F 10G 10Y 10R 10F 11G 11R 11F

12R 12Y 12G 12F PC9 PC4 PC6 PC8

10 2Y 2R 2F 3Y 3R 3F 4

5Y 5R 5F 6Y 6R 6F 7Y 7R 7F 8Y 8R 8F 9

LS10 LS11 LS12 LS13 LS14 LS15 LS16

FL2

LS1 LS2 LS3 LS4 LS5 LS6 LS7 LS8

SC

MODE 304-15

LOAD

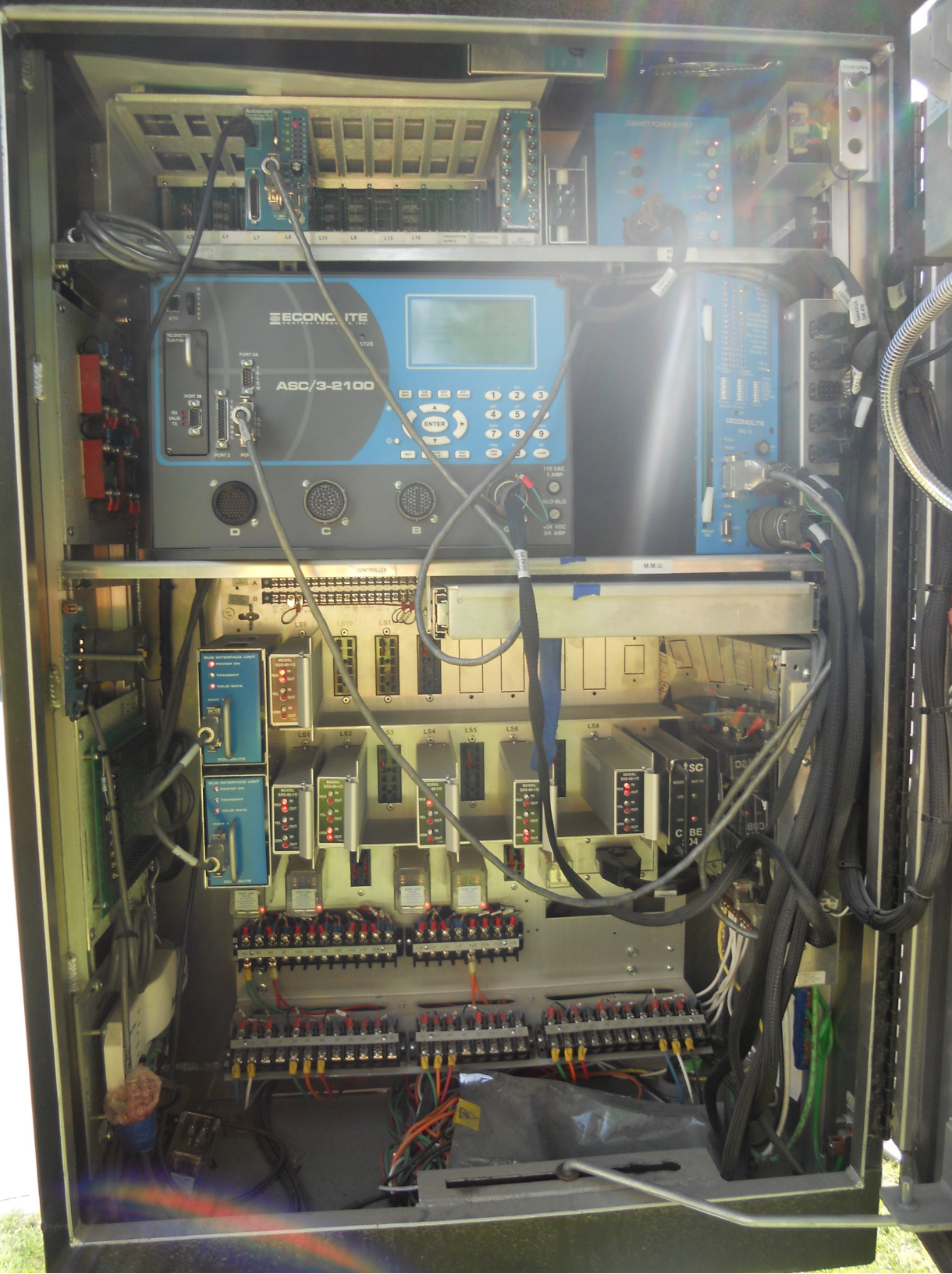
LOAD

CIBE

Autocore

Autocore







STOP
HERE ON
RED
←

NO
RIGHT
TURN
ON RED



NO
TURN
ON RED

People's United
Bank









STOP
HERE ON
RED
←

NO
RIGHT
TURN
ON RED

PARKER
RD

101









AMASA PRIDE HOUSE

PSI POLICY STUDIES INC.

WA WILSON ARCHITECTS

ARCHITECTURE - PLANNING - MEMBER AMERICAN INSTITUTE OF ARCHITECTS



43 SOUTH MAIN







STOP
HERE ON
RED
←

NO
RIGHT
TURN
ON RED



NO
TURN
ON RED

SOUTH MAIN ST







STOP
HERE ON
RED



NO
PARKING
BETWEEN
LINES









Date: 06/13/12

Timing Data:

Phase	1	2	3	4	5	6	7	8	9
Phases in use		x		x		x			
Min Green	8	8	0	8	0	8	0	8	5
Walk	0	0	0	0	0	0	0	0	5
Ped Clr	0	0	0	0	0	0	0	0	12
Veh Ext	2	2	0	2	2	2	0	2	0
MAX 1	10	30	0	28	0	30	0	28	28
MAX 2	15	40	0	20	0	40	0	20	28
MAX 3	10	40	0	30	0	40	0	30	28
Yellow	4	4	0	4	0	4	0	4	0
All Red	2	2	0	2	0	2	0	2	0
Recall to Max	0	0	0	0	0	0	0	0	0

Coordination Patterns: ACS3/Naztec Not Coordinated

Pattern 1							
Cycle Length	Offset		COS				
Splits	Ph 1		Ph 2		Ph 3		Ph 4
	Ph 5		Ph 6		Ph 7		Ph 8
	Ph 9		Ph 10		Ph 11		Ph 12
Pattern 2(21)							
Cycle Length	Offset		COS		211		
Splits	Ph 1		Ph 2		Ph 3		Ph 4
	Ph 5		Ph 6		Ph 7		Ph 8
	Ph 9		Ph 10		Ph 11		Ph 12
Pattern 3							
Cycle Length	Offset		COS		311		
Splits	Ph 1		Ph 2		Ph 3		Ph 4
	Ph 5		Ph 6		Ph 7		Ph 8
	Ph 9		Ph 10		Ph 11		Ph 12

Day Plan [1]

Event	Action Plan	Step Begins
1	1	0600
2	2	0700
3	1	0900
4	3	0300
5	1	0600
6	4	1000
1	3	1200

Action Plan

Action Plan	Pattern
1	254-FREE
2	254-FREE
3	254-FREE
4	255-FLASH