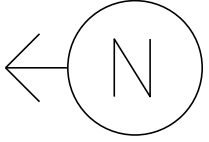
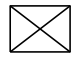
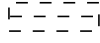

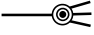


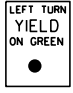


MS # 620

VT 15 EAST



-  CONTROL BOX
-  LOOP DETECTION
-  PULL BOX
-  LUMINAIRE
-  STANCHION
-  =  LEFT TURN
YIELD
ON GREEN

VIANOR



VT 100 SOUTH

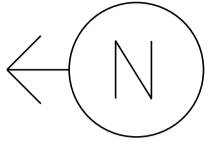
ONLY



VT 100 NORTH
VT 15 WEST

NOT TO SCALE

MS # 620



VT 15 EAST

12'

12'

10'

12'

12'

VIANOR

STOP BAR 12'

STOP BAR 30'

LANE LINE 270'



ONLY

VT 100 SOUTH

STOP BAR 25'



ONLY

LANE LINE 75'

VT 100 NORTH
VT 15 WEST

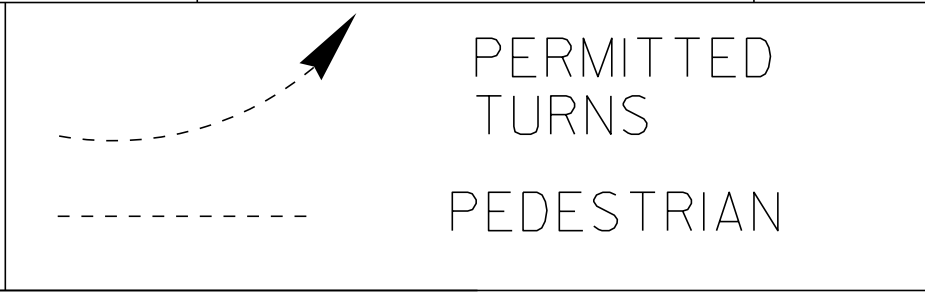
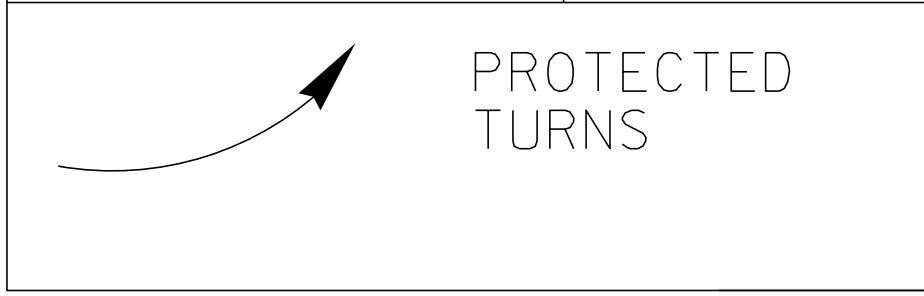
12'

12'

12'

NOT TO SCALE

<p style="writing-mode: vertical-rl; transform: rotate(180deg);">D I A G R A M</p> <p>N ←</p>				
<p>TIMING</p>	<p>G = Y =</p>	<p>G = Y =</p>	<p>G = Y =</p>	<p>G = Y =</p>
<p style="writing-mode: vertical-rl; transform: rotate(180deg);">D I A G R A M</p>				
<p>TIMING</p>	<p>G = Y =</p>	<p>G = Y =</p>	<p>G = Y =</p>	<p>G = Y =</p>



CYCLE LENGTH, C= _____ S



PROPERTY OF
VT. AGENCY OF TRANS.
MAINTENANCE DIV.
IN EMERGENCY CALL
DIST. TRANS. OFFICE
NIGHTS & WEEKENDS

PROPERTY OF:
VT. AGENCY OF TRANS.
MAINTENANCE DIV.

IN EMERGENCY CALL:
DIST. TRANS. OFFICE

828 2691 BERLIN

NIGHTS & WEEKENDS: 888 4211

WARNING

WARNING

DO NOT OPERATE
CABINET WITHOUT
CONFLICT MONITOR UN

DANGER

115 VOLTS A.C.

CONTROL UNIT

ON OFF

AUTO

STOP

TEST

ON OFF

VEH TEST SW'S

01/A	02/B	03/C	04/D
05	06	07	08
VEH TEST SW'S			
01/A	02/B	03/C	04/D
05	06	07	08

Yellow electrical component with a red indicator light and a metal mounting bracket.



SERIES 2
E8 THRU
SERIES 2
E9 THRU
LM 301
E01

SERIES 2
M8 THRU
SERIES 2
M9 THRU
SERIES 2
M0 THRU

MODEL 200
RED

FAN ON TEMP
ECONOLITE
44520

RING STATUS PHASE STATUS COORD STATUS
INTERVAL TIMING 1 2 3 4 5 6 7 8 STATUS

YES/NO MON/OFF

1 2 3
4 5 6
7 8 9
0 CLEAR

RED CALL SPEC FUNC

F1 MAIN MENU F2 SUB-MENU F3 PAGE UP F4 PAGE DOWN F5 DISPLAY ADJUST F6 STATUS DISPLAY

ECONOLITE

A B C D

24V 1.5A SLO-BLO
115V SLO-BLO

TERMINAL TEMPERATURE

AS 200

RESET AFTER MODIFYING SWITCHES

FAULT MONITOR FAIL
RESET POWER
MODE INC PREV FAIL

721

MIN FLASH DUAL SEL 8421A B ABCEDEF
CYM LOG DISABLE
WD ENABLE BIND DISABLE
VM LATCH WALK DISABLE

1 2 3 4 5 6

SSM SSM
1 2 3 4 5 6 7 8 9 10 11 12

1/4 AMP SLOW BLOW

EDI
SSM12LE-PR

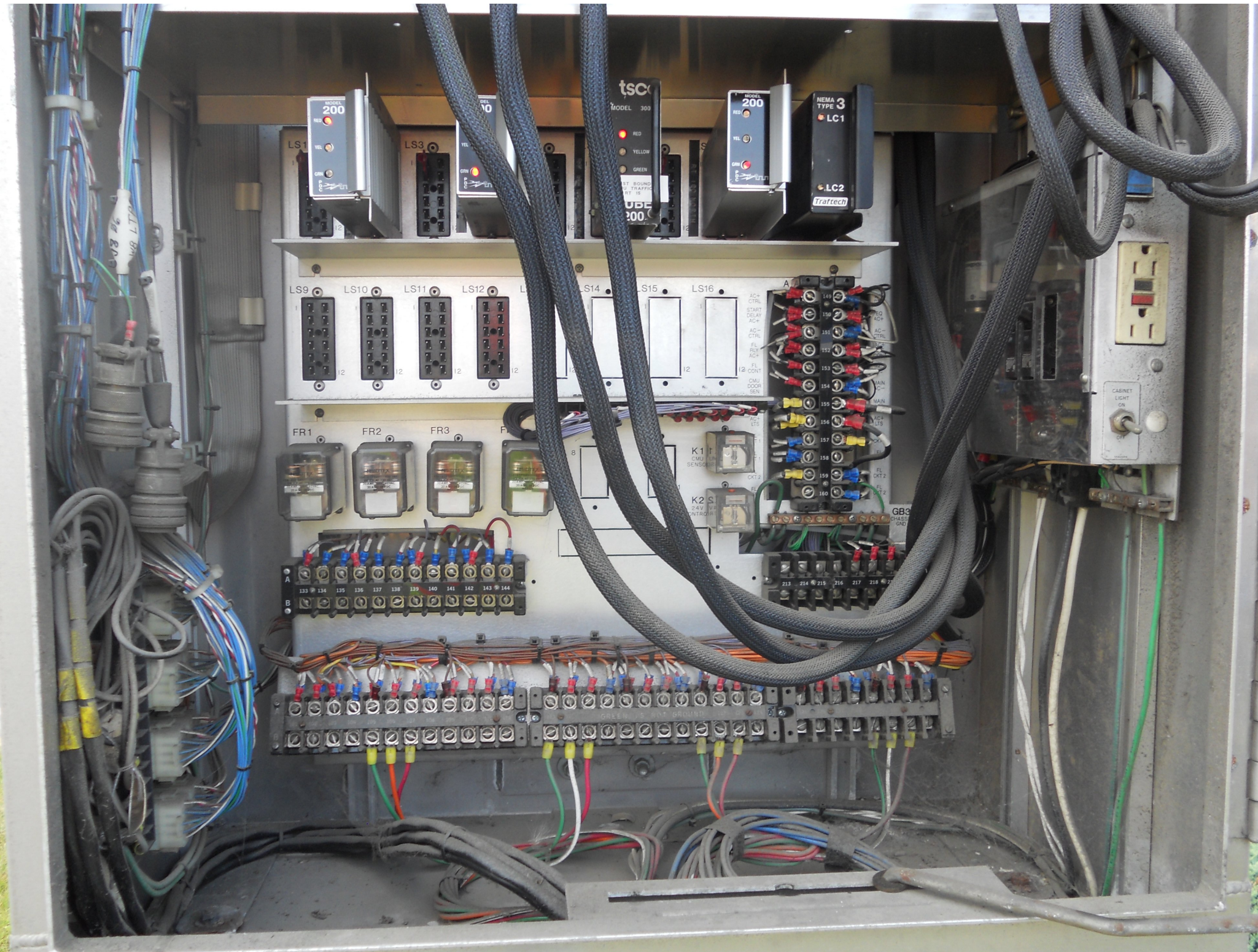
EBERLE DESIGN INC., PHOENIX, AZ. 85018

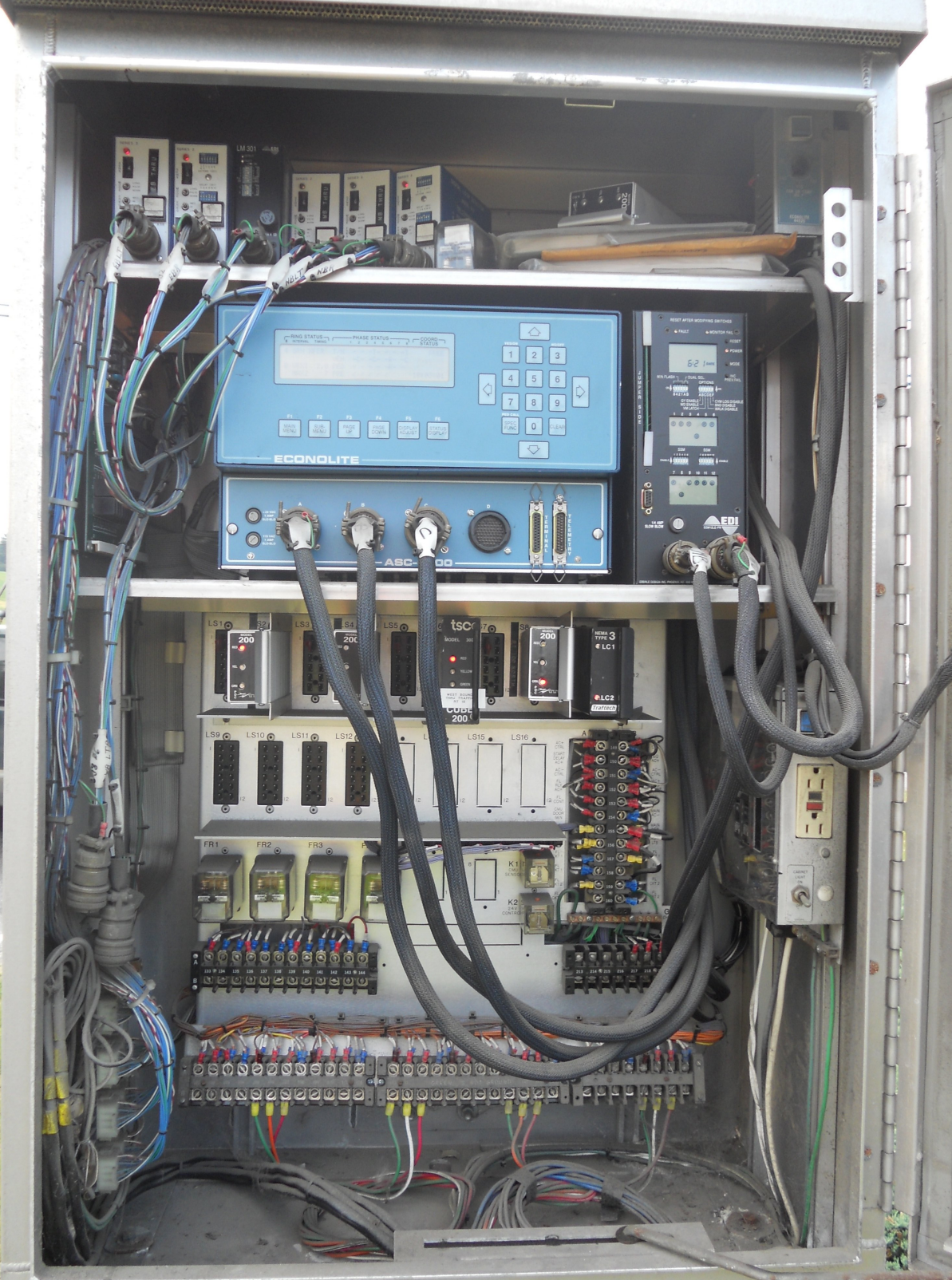
MODEL 200
RED
YEL
GRN

tsc
MODEL 301
RED
YELLOW
GREEN
WEST BOUND
THERM. TRAS

MODEL 200
RED
YEL
GRN

NEMA TYPE 3
LC1
LC2







SERIES 2

ON
1 2 3 4 5 6
1 1 2 4 8
4 2
EXTEND (SEC)

EB THRU

LONG PULSE NORM

MED HI LO

SERIES 2

ON
1 2 3 4 5 6
1 1 2 4 8
4 2
EXTEND (SEC)

5

LONG PULSE NORM

MED HI LO

LM 301

EDI

DETECT
FAULT ON

PUL SH 0
PRES LONG 1
Output 2

FUSE
4 A SB

SERIES 2

ON
1 2 3 4 5 6
1 1 2 4 8
4 2
EXTEND (SEC)

WB THRU

LONG PULSE NORM

MED HI LO

SERIES 2

ON
1 2 3 4 5 6
1 1 2 4 8
4 2
EXTEND (SEC)

NB THRU

LONG PULSE NORM

MED HI LO

SERIES 2

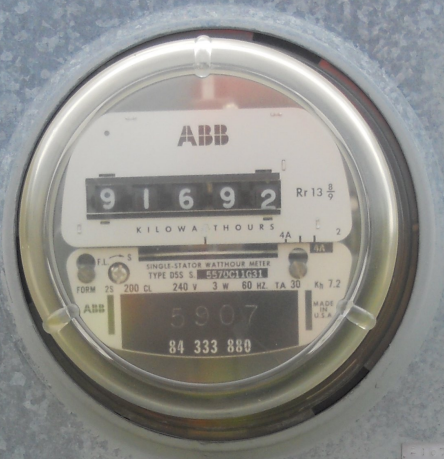
ON
1 2 3 4 5 6
1 1 2 4 8
4 2
EXTEND (SEC)

4

LONG PULSE NORM

MED HI LO

MIDTEX
186-6913A1 180 VAC
1/4 HP AT 120 VAC
3.5 AMP 180/240VAC
1.5 A 180 VAC



5907





Mobil

3.69
3.83
3.95

Want better fuel economy? Think CLEAN.





WOK & ROLL
Chinese Food
888-8833
PEPSI

EAST VERMONT 15
SOUTH VERMONT 100



LEFT TURN
YIELD
ON GREEN







Mobil



72



WOK N ROLL

15 15

100



VANOR





ONLY

15
15
100

WOK N ROLL

ANOR

7



WEST VERMONT 15
EAST VERMONT 15
TO
NORTH VERMONT 100

WOK N ROLL

Customer Service









LEFT TURN
YIELD
ON GREEN



SOUTH
VERMONT
100



NORTH
VERMONT
100



WEST
VERMONT
15



WOK & ROLL
Chinese Food
888-8833
PEPSI

Mobil

NO PARKING



LEFT TURN
YIELD
ON GREEN

SOUTH
VERMONT
100

NORTH
VERMONT
100



WEST



VERMONT
15



NO
PARKING
BEGIN



Mobil





ET
K
N

W
R

AUBUCHON
HARDWARE

7

AUBUCHON HARDWARE









NIC Program Data

Step No.	Pgm	Time	Cycle	Offset	Split	Flash	Dim	Max2	Max3	Sp Functions			
										1	2	3	4
1	1	0600	1	0	1
2	1	1000	1	0	1	.	.	X
3	1	2000	1	0	1
4	1	2200	1	0	1	X
5	2	0700	1	0	1
6	2	2200	1	0	1	X
7	3	0500	1	0	1
8	3	0900	1	0	1	.	.	X
9	3	1900	1	0	1
10	3	2100	1	0	1	X
11	4	0600	1	0	1
12	4	2100	1	0	1	X
13	5	0700	1	0	1
14	5	1100	1	0	1	.	.	X
15	5	2100	1	0	1
16	5	2300	1	0	1	X
17	6	0800	1	0	1
18	6	2300	1	0	1	X