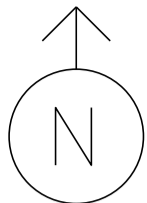


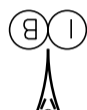
MS # 615



VT-14 NORTH

- ⊙ PEDESTAL POST
- ⊙→ PEDESTRIAN SIGNAL
- ⊠ CONTROL BOX
- - - LOOP DETECTION
- LUMINAIRE
- STANCHION
- ROADWAY SIGN
- (B) =
- (C) =
- (Q) =

VT-63



ONLY



ONLY



ONLY



ONLY

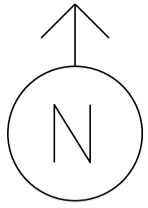


MIDDLE ROAD

VT-14 SOUTH

NOT TO SCALE

MS # 615



11'

12'

LANE LINE 95'



ONLY



STOP BAR 35'

VT-14 NORTH

VT-63

STOP BAR 25'



ONLY

LANE LINE 75'

9'



9'

ONLY

12'



LANE LINE 340'

STOP BAR 30'

12'



STOP BAR 23'



ONLY



LANE LINE 155'

11'

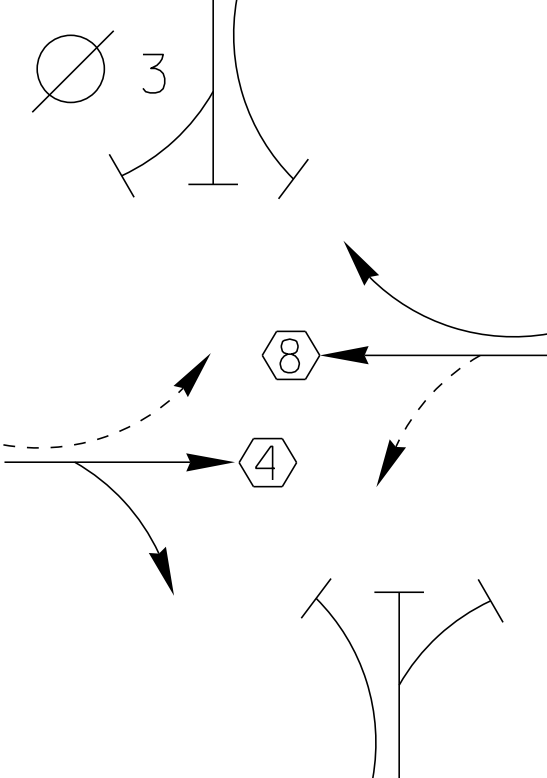
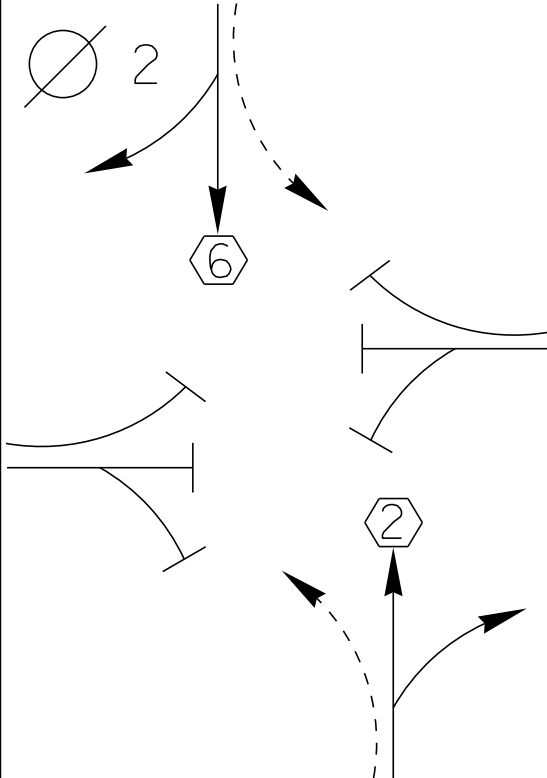
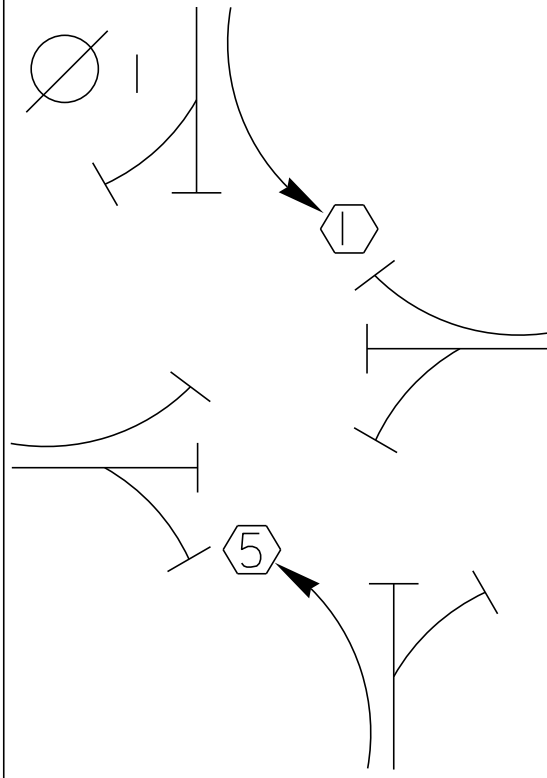
11'

MIDDLE ROAD

VT-14 SOUTH

NOT TO SCALE

D  
I  
A  
G  
R  
A  
M



TIMING

G =  
Y =

G =  
Y =

G =  
Y =

G =  
Y =

D  
I  
A  
G  
R  
A  
M

Ø 5

Ø 6

Ø 7

Ø 8

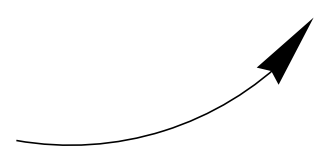
TIMING

G =  
Y =

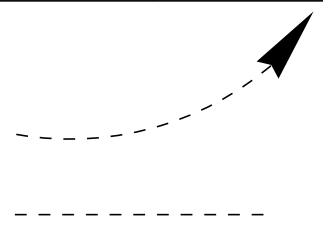
G =  
Y =

G =  
Y =

G =  
Y =



PROTECTED  
TURNS



PERMITTED  
TURNS  
PEDESTRIAN

CYCLE LENGTH, C = \_\_\_\_\_ S



PROPERTY OF:  
VT. AGENCY OF TRANS.  
MAINTENANCE DIV.

IN EMERGENCY CALL:  
DIST. TRANS. OFFICE

828 2691

NIGHTS & WEEKENDS: 229 9191

**WARNING**

DO NOT OPERATE  
CABINET WITHOUT  
CONFLICT MONITOR UNIT

**DANGER**

115 VOLTS A.C.

CONTROLLER

TEST

AUTO

FLASH

STOP

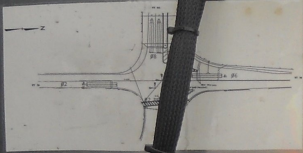
FLASH

TEST

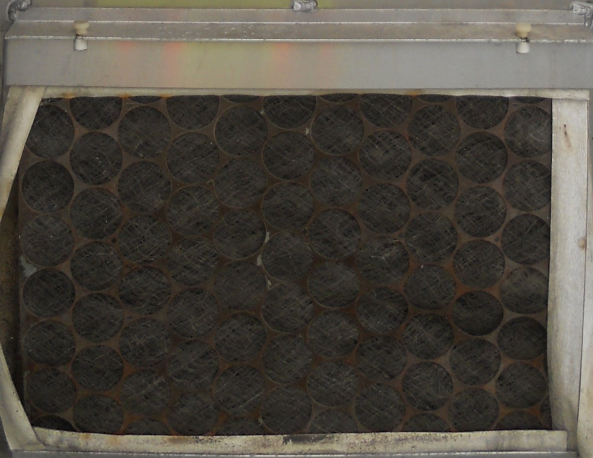
ON

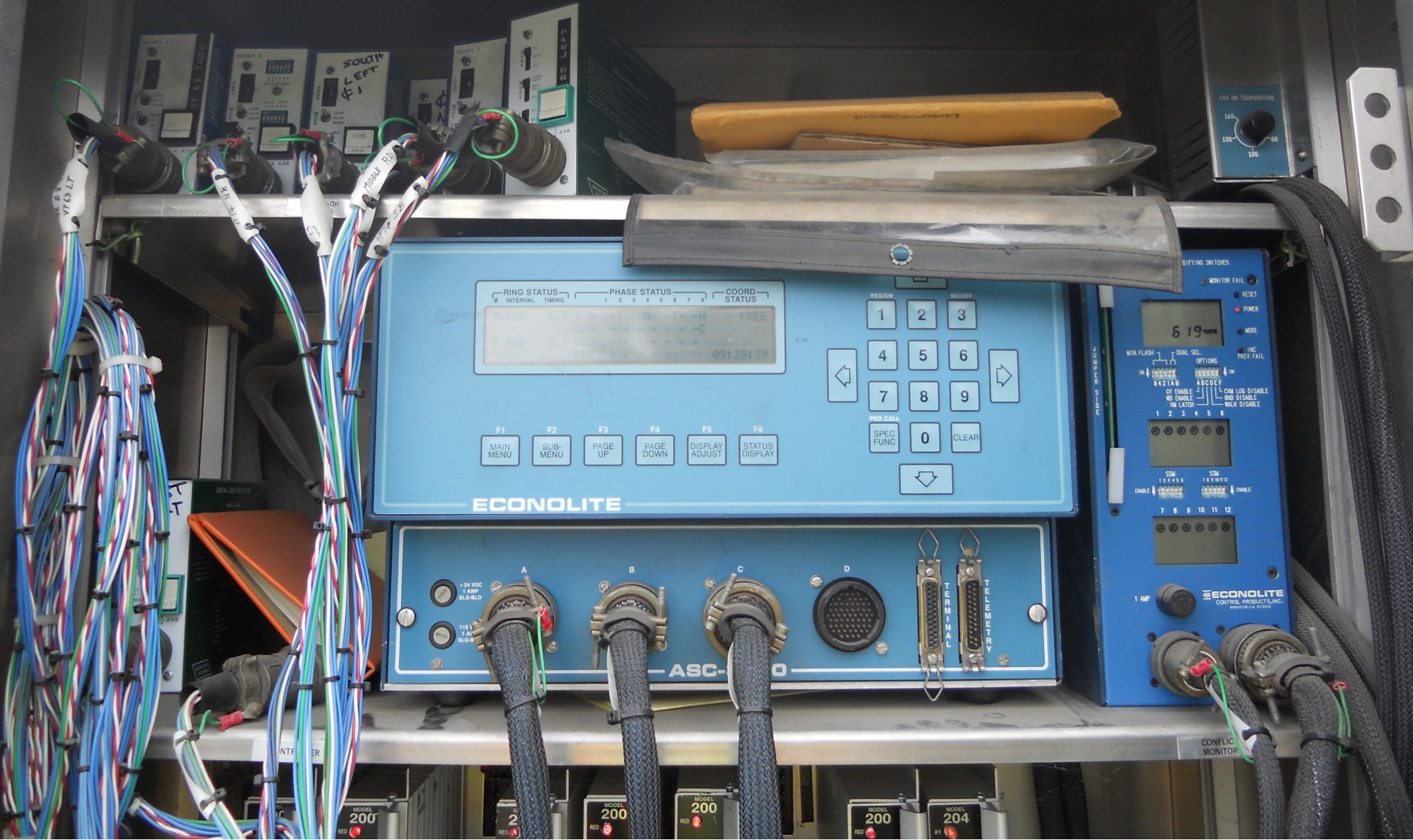
VEH TEST SW'S

Ø1/A	Ø2/B	Ø3/C	Ø4/D
Ø5	Ø6	Ø7	Ø8
Ø1/A	Ø2/B	Ø3/C	Ø4/D
Ø2	Ø4	Ø5	Ø8



Handwritten notes on a piece of paper, including a yellow sticky note. The text is partially obscured but appears to contain technical details or dates.





RING STATUS PHASE STATUS COORD STATUS  
INTERVAL TIMING 1 2 3 4 5 6 7 8  
FREE  
09:39:39

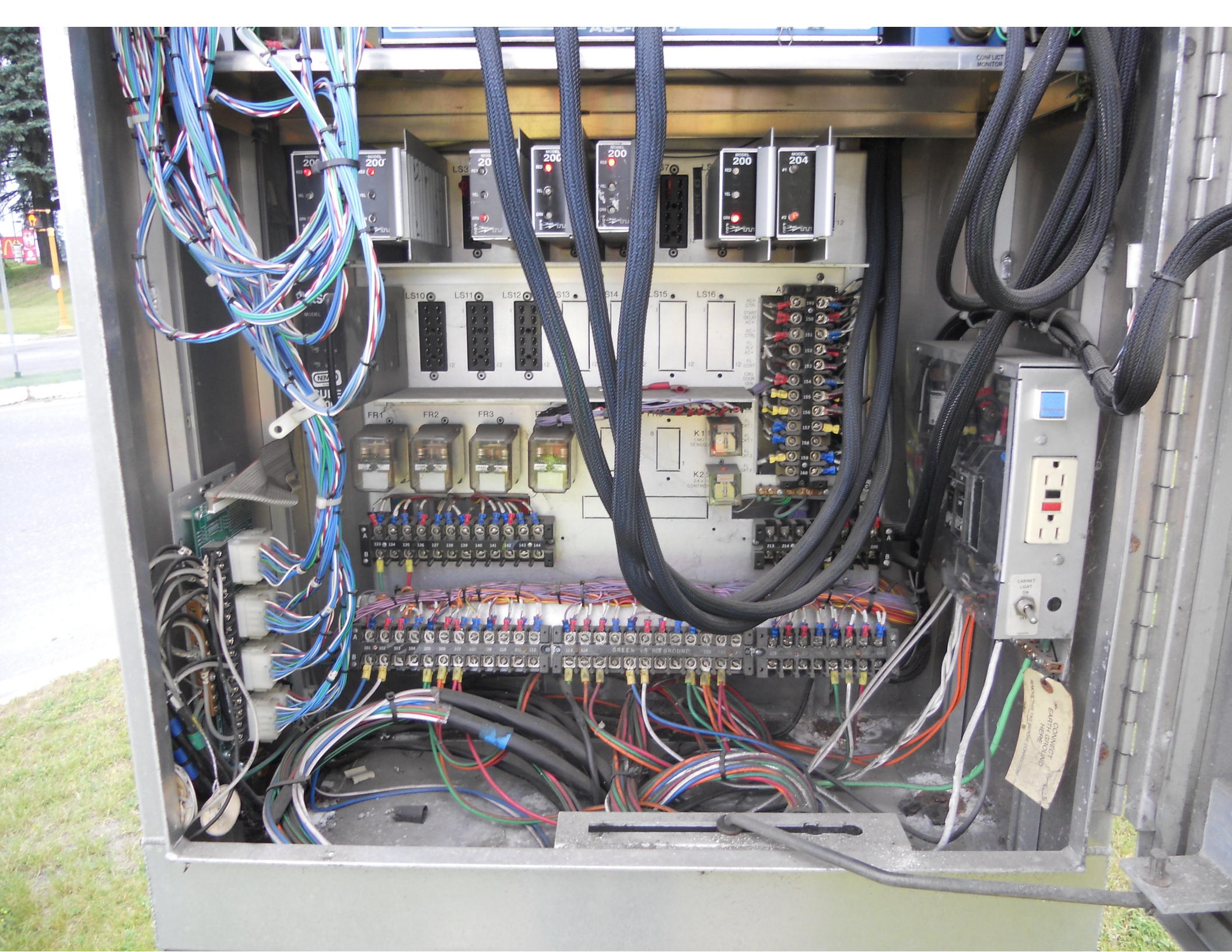
F1 F2 F3 F4 F5 F6  
MAIN MENU SUB-MENU PAGE UP PAGE DOWN DISPLAY ADJUST STATUS DISPLAY

ECONOLITE

ASC-10  
+24 VDC 1 AMP BLO-BLO  
115V 1.4A BLO-BLO  
A B C D  
TELEMETRY TERMINAL

DIYING SWITCHES  
MONITOR FAIL  
RESET  
POWER  
MODE  
PREV. FAIL  
MIN. FLASH  
DUAL SEL. OPTIONS  
8421AB ABCDEF  
CH1 ENABLE NO. LATCH  
CH2 LOC. DISABLE  
CH3 WALK. DISABLE  
1 2 3 4 5 6  
SSM 12 24 4 8 SSM 16 32 64 128  
CHABLE CHABLE  
7 8 9 10 11 12  
1 AMP  
ECONOLITE  
CONTROL PRODUCTS, INC.  
SAN DIEGO, CA 92108

CONFLICT MONITOR



CONF LECT MONITOR

MODEL 200  
REL  
TEL  
ON/OFF

MODEL 200  
REL  
TEL  
ON/OFF

MODEL 200  
REL  
TEL  
ON/OFF

MODEL 200  
REL  
TEL  
ON/OFF

MODEL 204  
REL  
TEL  
ON/OFF

LS10 LS11 LS12 LS13 LS14 LS15 LS16

FR1 FR2 FR3

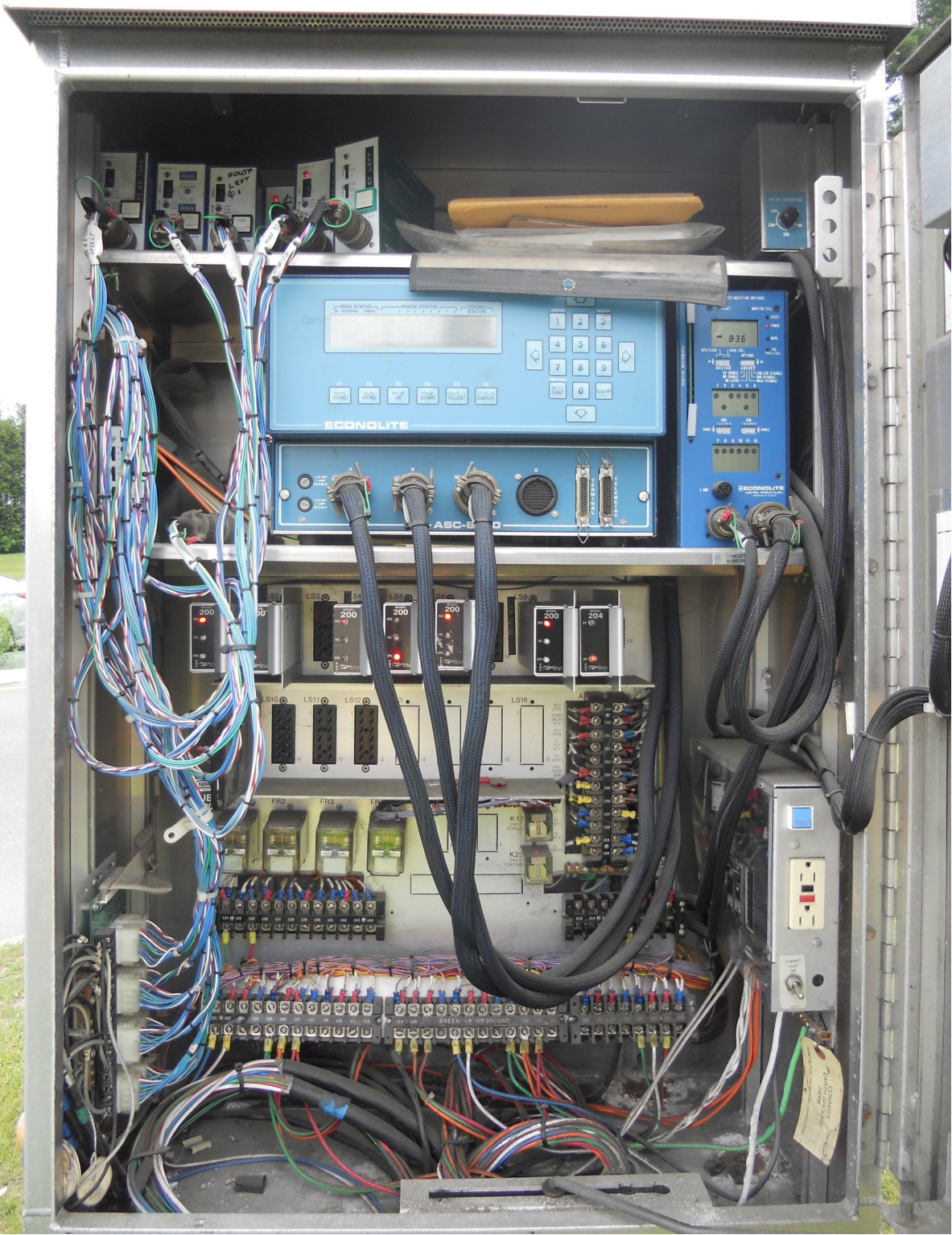
K1  
24V  
SENSE

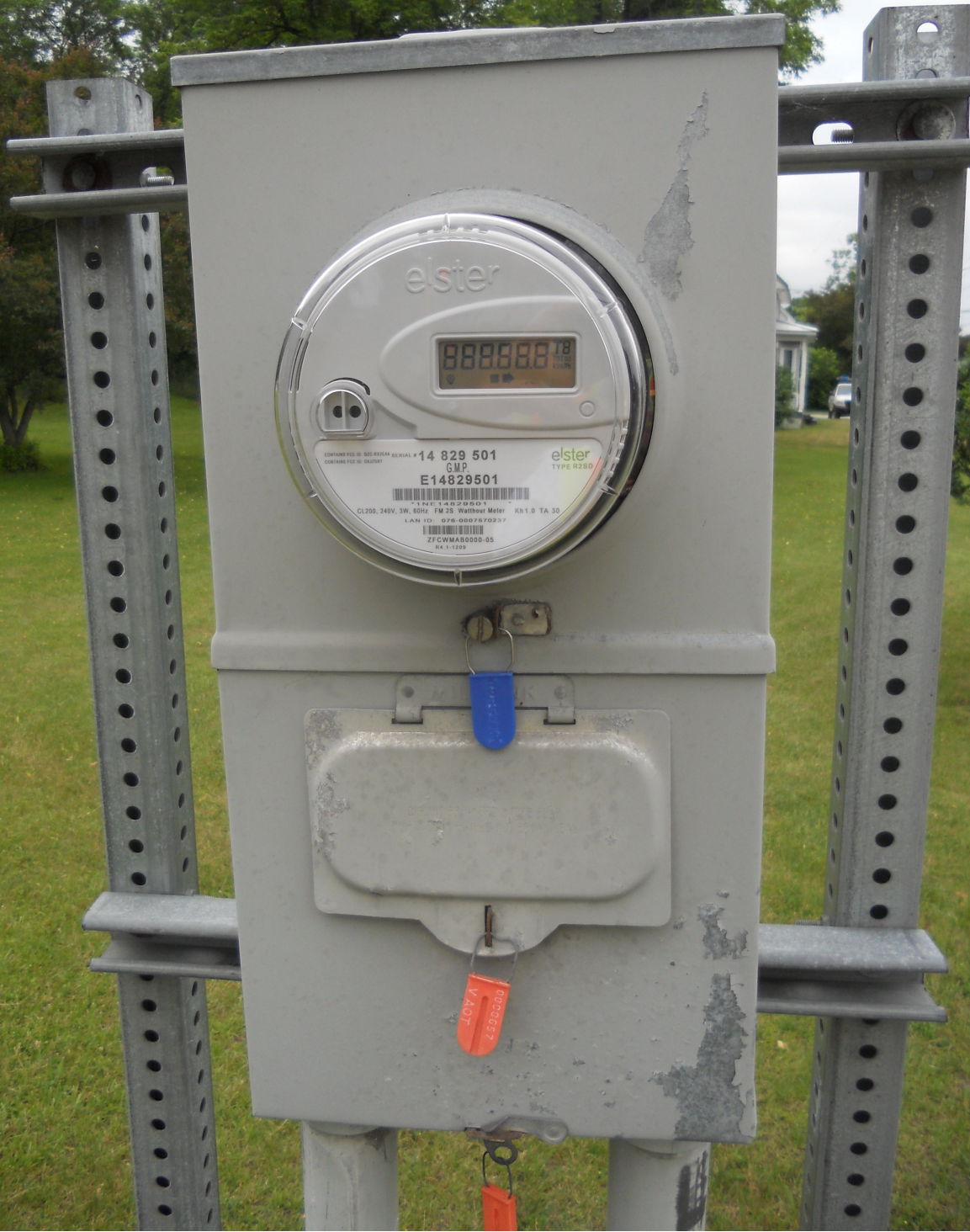
K2  
24V  
CONTROL

133 134 135 136 137 138 139 140 141 142 143 144

101 102 103 104 105 106 107 108 109 110 111 112 113 114 GREEN R WIRE GROUND 115 116 117 118 119 120 121 122

CONNECT  
EARTH CABLE  
HERE





elster

888888 18

COMPANY FILE NO. 822-000001 SERIAL # 14 829 501  
DISPATCH FILE NO. 8220001

GMP

E14829501

CL200, 240V, 3W, 60Hz FM 2S Wallbox Meter KH1.0 TA 30

LAN ID: 078-000770237

ZFCVMA5000-05

MA 1-1209

elster  
TYPE R250

NOT  
2-23-2009





↑ BARRE 2  
↑ E. MONTPELIER 11  
GRANITEVILLE 3 →  
WEST TO NORTH  
VERMONT 63 INTERSTATE 89 VERMONT 14  
← ← ↑

ONLY



LEFT TURN  
YIELD  
ON GREEN



NORTH TO  
14 302





UNION METAL  
MFG. CO.

490745

LSE



LEGAL LOAD  
LIMIT  
24,000  
POUNDS

SPEED  
LIMIT  
30



North  
South  
Interchange  
South

ONLY



14 NORTH  
TO 302  
Barre  
←

Graniteville  
Granite Quarries  
14 SOUTH →

14

14 302 14

ONLY



14 NORTH  
TO 302  
Barre  
←

↑ Graniteville  
Granite Quarries

14 SOUTH →

TRUCK ROUTE  
NORTH TO SOUTH  
14 302 14  
← →

LEFT LANE  
MUST  
TURN LEFT

17



LEFT LANE  
MUST  
TURN LEFT



Barre Is...  
**OPEN!**  
We Dig  
Barre  
www.weddigbarre.com



30







SOUTH VERMONT 14  
WEST VERMONT 63  
TO INTERSTATE 89

YIELD TO PEDESTRIANS

17

7









UNION METAL  
MFG. CO.  
490746

JSE  
CANTON OHIO  
U.S.A.



WEST  
TO 89

Auto  
TOUCH  
802-522-8200

ONLY



↑  
← →  
ONLY

WEST  
TO 189







PUSH  
BUTTON  
FOR  
WALK  
SIGNAL









NIC Program Data

-----

Step No.	Pgm	Time	Cycle	Offset	Split	Flash	Dim	Max2	Max3	Sp Functions			
										1	2	3	4
1	1	0000	1	0	1	X	.	.	.	.	.	.	.
2	1	0600	0	0	1	.	.	X	.	.	.	.	.
3	1	0700	0	0	1	.	.	.	.	.	.	.	.
4	1	0900	0	0	1	.	.	X	.	.	.	.	.
5	1	1600	0	0	1	.	.	.	X	.	.	.	.
6	1	1900	0	0	1	.	.	X	.	.	.	.	.
7	2	2300	1	0	1	X	.	.	.	.	.	.	.
8	2	0500	0	0	1	.	.	X	.	.	.	.	.
9	2	0600	0	0	1	.	.	.	.	.	.	.	.
10	2	0800	0	0	1	.	.	X	.	.	.	.	.
11	2	1500	0	0	1	.	.	.	X	.	.	.	.
12	2	1800	0	0	1	.	.	X	.	.	.	.	.
13	3	0100	1	0	1	X	.	.	.	.	.	.	.
14	3	0700	0	0	1	.	.	X	.	.	.	.	.
15	3	0800	0	0	1	.	.	.	.	.	.	.	.
16	3	1000	0	0	1	.	.	X	.	.	.	.	.
17	3	1700	0	0	1	.	.	.	X	.	.	.	.
18	3	2000	0	0	1	.	.	X	.	.	.	.	.