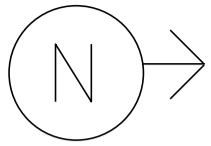


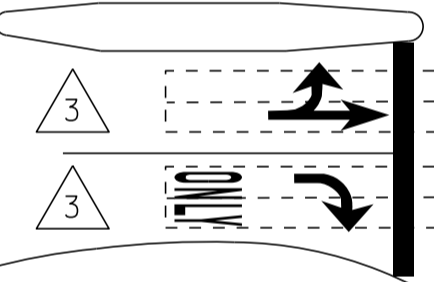
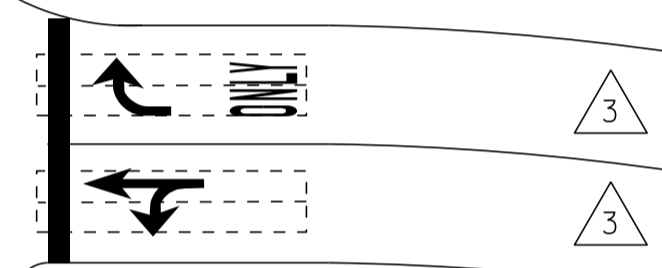
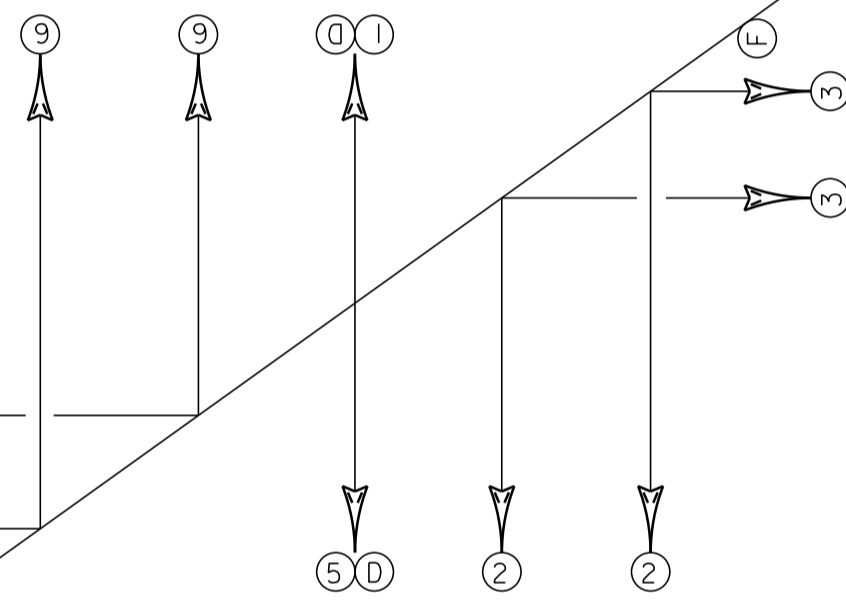
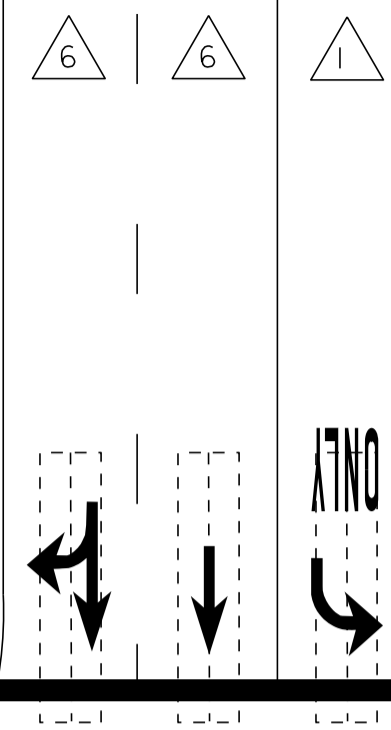
MS # 612

VT-62 WEST

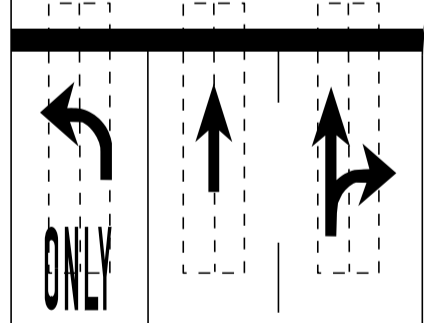


- ⊙ PEDESTAL POST
- ⊙→ PEDESTRIAN SIGNAL
- ⊠ CONTROL BOX
- - - LOOP DETECTION
- |— LUMINAIRE
- STANCHION
- ⊙ =
- ⊙ =

BERLIN ST



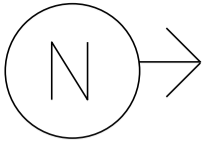
BERLIN ST



VT-62 EAST

NOT TO SCALE

MS # 612

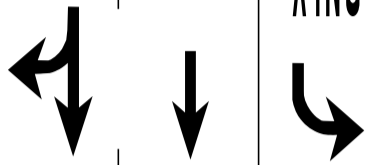


VT-62 WEST

12' 11'

12'

LANE LINE 290'



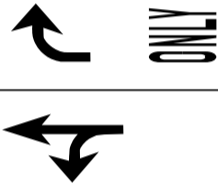
ONLY

STOP BAR 35'

CROSSWALK 72'

STOP BAR 26'

LANE LINE 50' 18'



ONLY

BERLIN ST

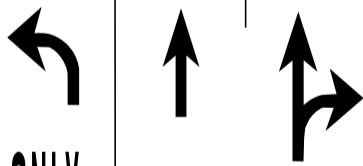
BERLIN ST

19' LANE LINE 50'

STOP BAR 38'

ONLY

STOP BAR 35'



ONLY

LANE LINE 245'

12'

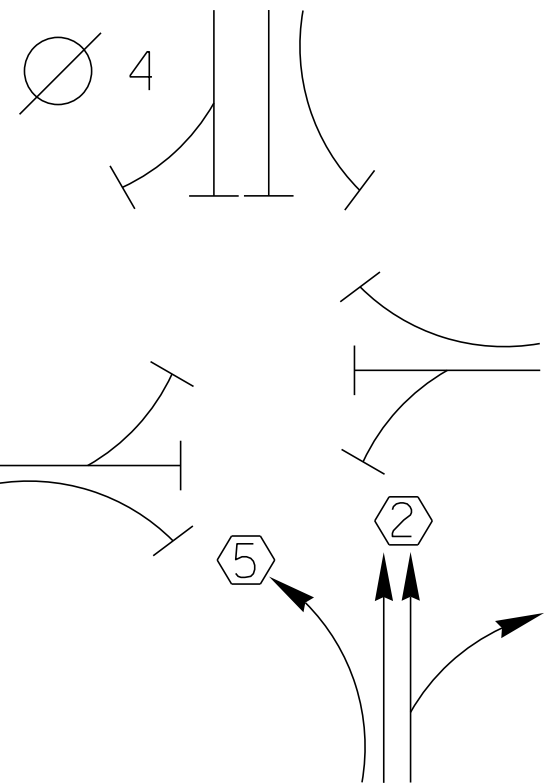
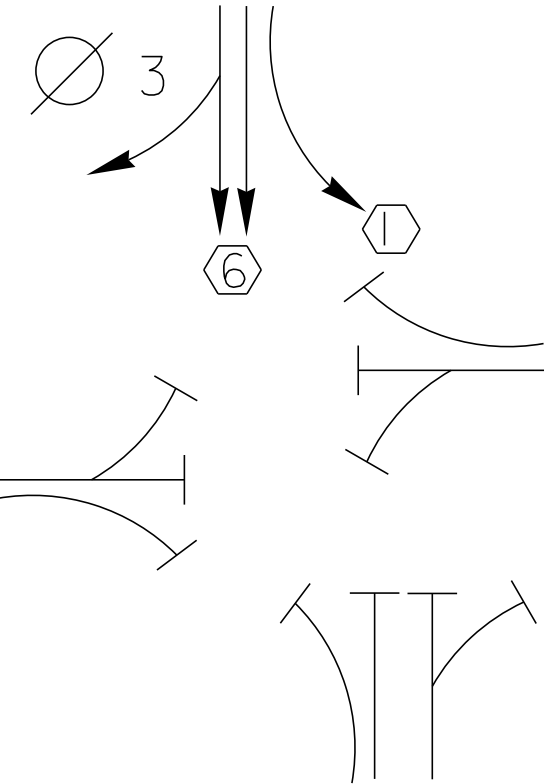
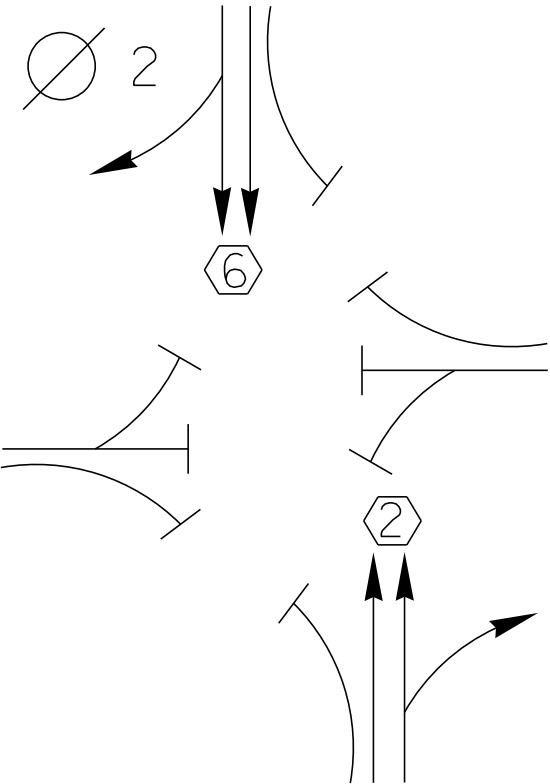
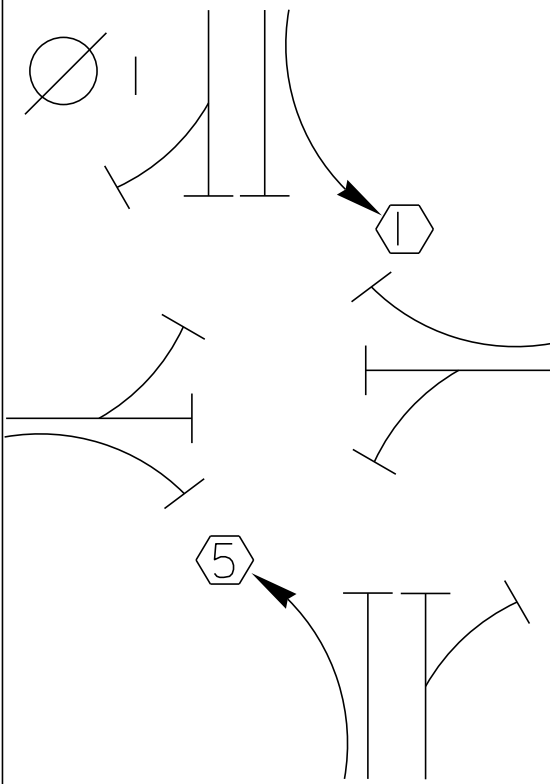
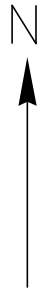
13'

11'

VT-62 EAST

NOT TO SCALE

D
I
A
G
R
A
M



TIMING

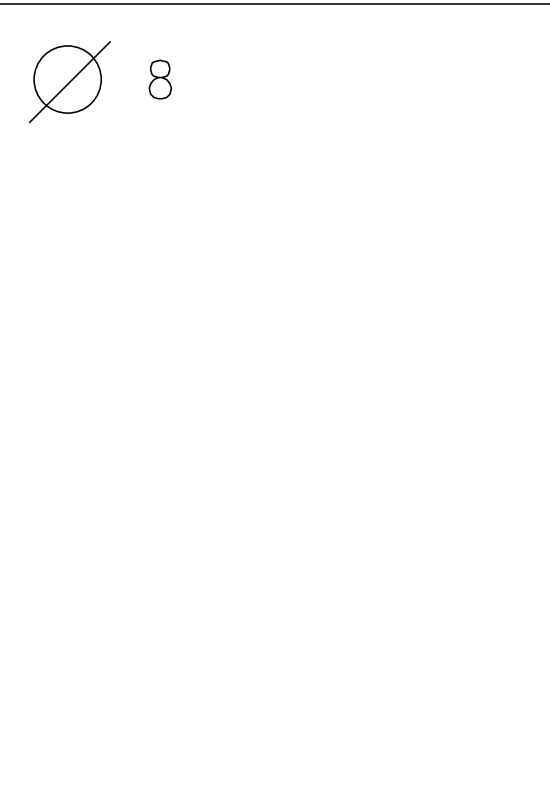
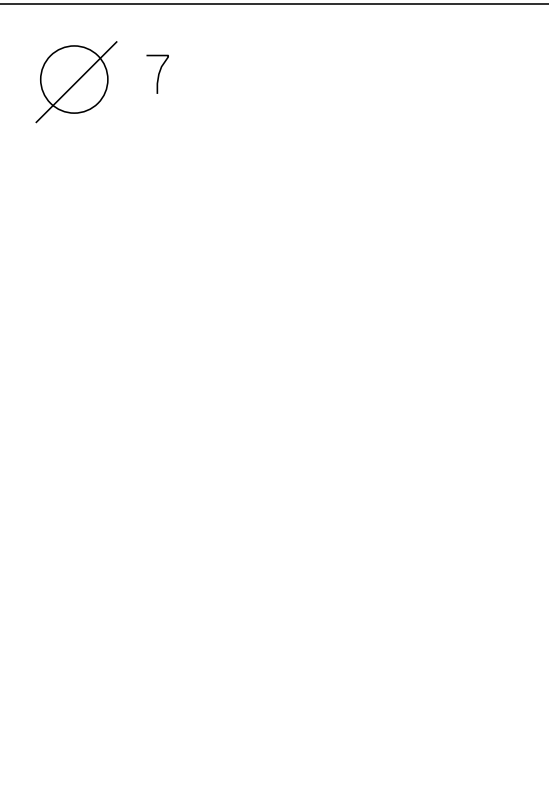
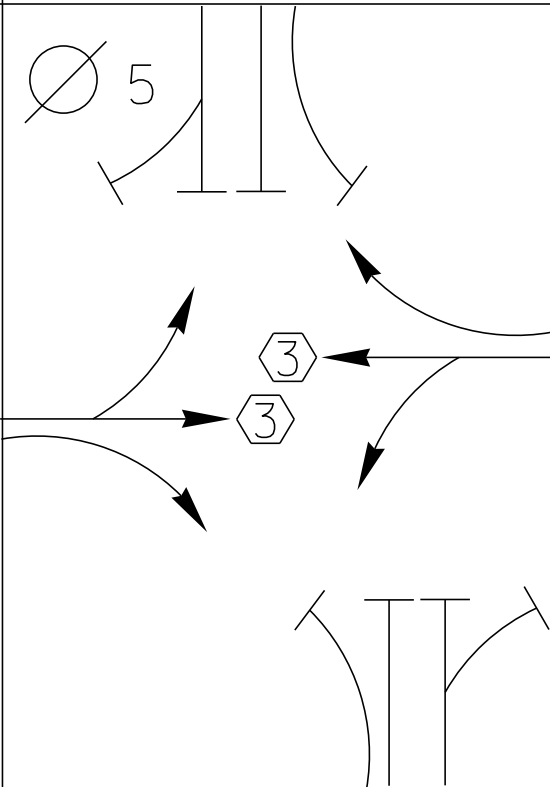
G =
Y =

G =
Y =

G =
Y =

G =
Y =

D
I
A
G
R
A
M



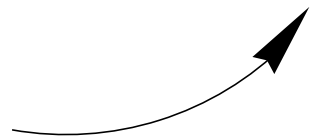
TIMING

G =
Y =

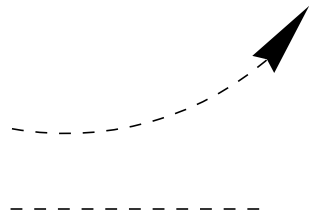
G =
Y =

G =
Y =

G =
Y =



PROTECTED
TURNS



PERMITTED
TURNS
PEDESTRIAN

CYCLE LENGTH, C = _____ S



PROPERTY OF:
VT. AGENCY OF TRANS
MAINTENANCE DIV.

IN EMERGENCY CALL
DIST. TRANS. OFFICE

828-2887

NIGHTS & WEEKENDS: 778-8887

WARNING

DO NOT OPERATE
CABINET WITHOUT
CONFLICT MONITOR UNIT

DANGER

115 VOLTS A.C.

3

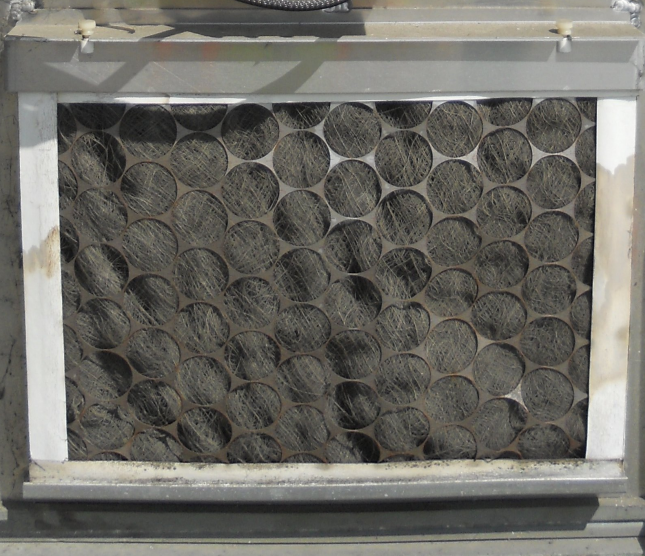
1534-43

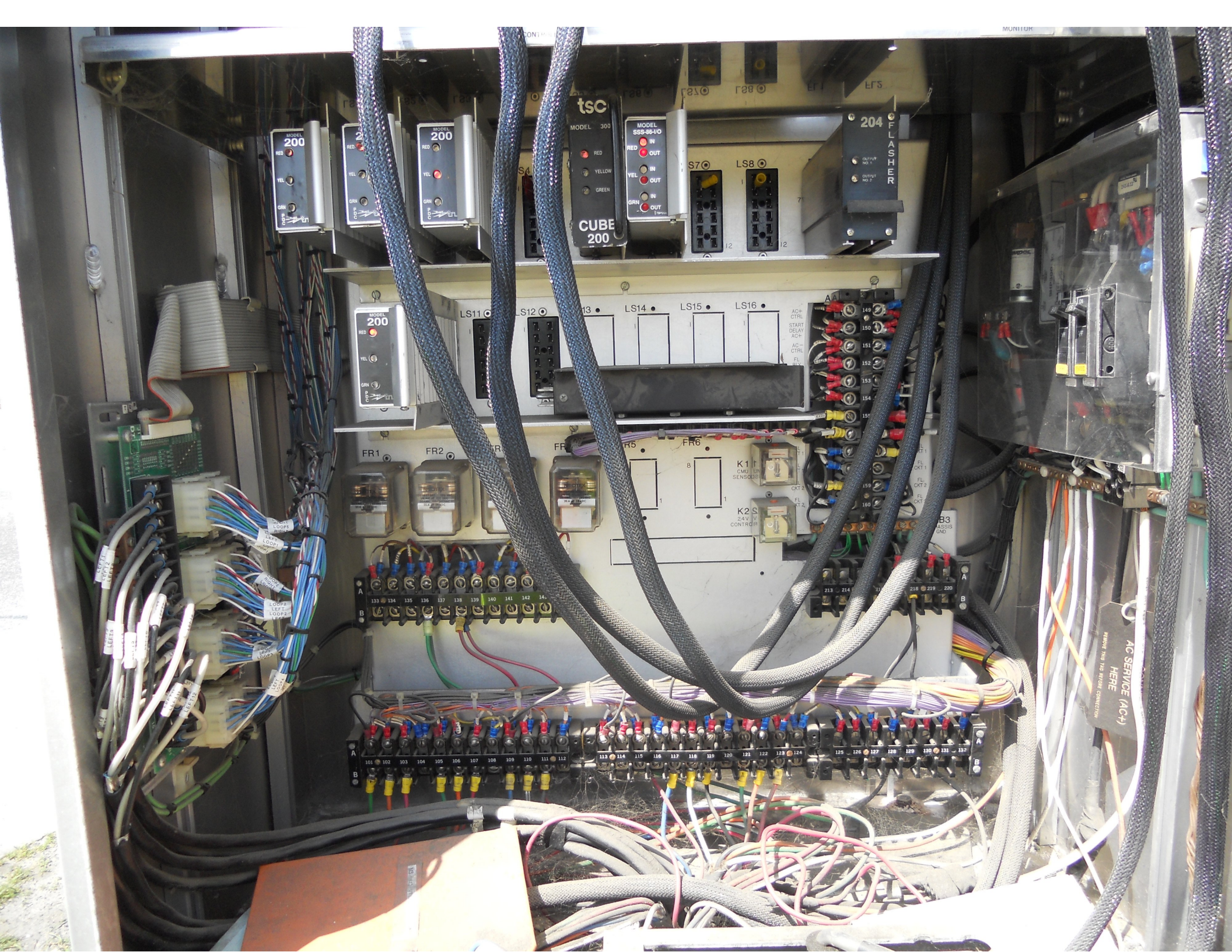
CONTROLLER ON AUTO STOP TUNING AUTO ON OFF FLASH

VEH TEST SWIS

Q1/A	Q2/B	Q3/C	Q4/D
Q5	Q6	Q7	Q8
Q9/A	Q10/B	Q11/C	Q12/D
Q13	Q14	Q15	Q16

VEH TEST SWIS





MODEL 200
RED
YEL
GRN

MODEL 200
RED
YEL
GRN

MODEL 200
RED
YEL
GRN

tsc
MODEL 300
RED
YELLOW
GREEN
CUBE 200

MODEL SSS-88-10
RED IN
RED OUT
GRN IN
GRN OUT

204
FLASHER
OUTPUT NO. 1
OUTPUT NO. 2

MODEL 200
RED
YEL
GRN

LS11 LS12 LS13 LS14 LS15 LS16

ACH-CTRL
START DELAY
ACH-CTRL
FL

FR1

FR2

FR5

FR6

K1
CMU LIM
SENSORS

K2
24V
CONTROL

B3
CLASSIS
GND

A
133 134 135 136 137 138 139 140 141 142 143
B

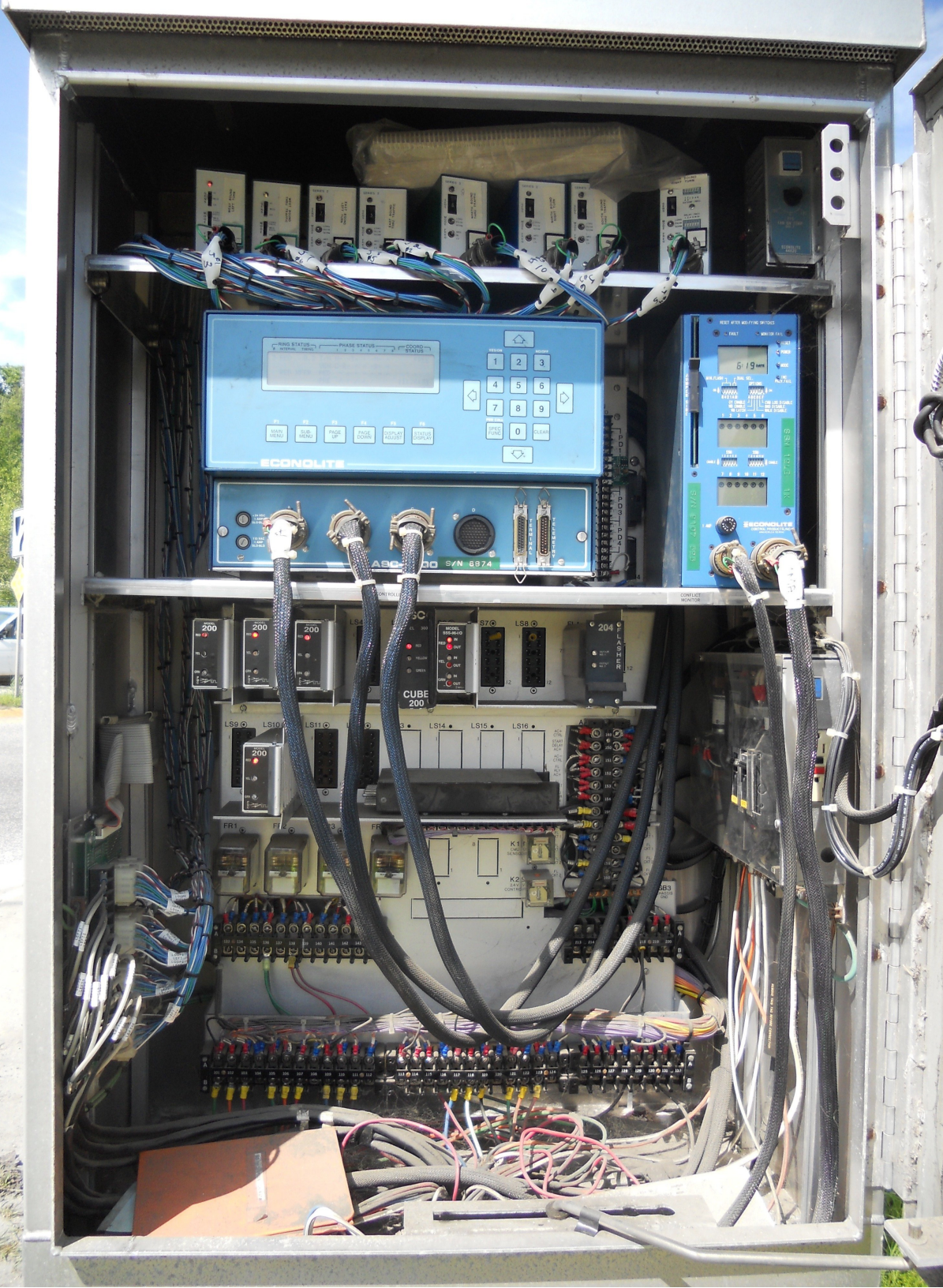
A
213 214
B
218 219 220

A
101 102 103 104 105 106 107 108 109 110 111 112
B

A
115 116 117 118 119 120 121 122 123 124
B

A
125 126 127 128 129 130 131 132
B

AC SERVICE (AC+) HERE
MAKING THIS THE RIGHT CONNECTION







PUSH
BUTTON
FOR
WALK
SIGNAL

W
13

WARNING

DANGER

110 VOLTS A.C.







TO
INTERSTATE
89
→

H
→

NO
LEFT
TURN
ON
RED

ROAD
AHEAD
CLOSED
AHEAD

7



NO
TURN
ON
RED

H
→

TO
INTERSTATE
89
→

21

ROAD IS
OPEN!

CITY OF SANDY
FIRE DEPT.
AMBULANCE

NO
TURN
ON
RED



WEIGHT LIMIT
24,000
POUNDS
SPEED LIMIT
25





ONLY







PROHIBITED
SIGNING FOR MOTORHOMES
TRAILERS
RECREATIONAL
VEHICLES
AND VEHICLES
OVER 10 FEET
LONG

62







RABBIT ARCHERY
FIREARMS
PAINTBALL
FISHING
HUNTING





NO THRU TRUCK TRAFFIC

NO THRU TRUCK TRAFFIC









ONLY

ROAD WORK AHEAD

ROAD WORK AHEAD





NO
TURN
ON
RED



40

PROHIBITED
LEFT TURN
ON RED





W
13

PUSH
BUTTON
FOR
WALK
SIGNAL





CONTAINS FCC ID: 02C-RK2EM SERIAL # 14 772 228
CONTAINS FCC ID: 6E220R1

14 772 228

G.M.P.

E14772228

elster

TYPE R2SD

CL200, 240V, 3W, 50Hz FM 2S Waikouaiti Meter Kh1.0 TA 30

LAN ID: 078-0007623537

ZFCWMA80000-05

REV 1.1200

NIC Program Data

```

-----
Step No.  Pgm Time Cycle Offset Split Flash Dim Max2 Max3 Sp Functions
              1 2 3 4
  1      1 0600   0    0     1   .   .   .   .   .   .   .
  2      1 0900   0    0     1   .   .   X   .   .   .   .
  3      1 1500   0    0     1   .   .   .   X   .   .   .
  4      1 1800   0    0     1   .   .   X   .   .   .   .
  5      1 0000   0    0     1   X   .   .   .   .   .   .
  6      2 0700   0    0     1   .   .   X   .   .   .   .
  7      2 0000   0    0     1   X   .   .   .   .   .   .
  8      3 0500   0    0     1   .   .   .   .   .   .   .
  9      3 0700   0    0     1   .   .   X   .   .   .   .
 10     3 1400   0    0     1   .   .   .   X   .   .   .
 11     3 1700   0    0     1   .   .   X   .   .   .   .
 12     3 2300   0    0     1   X   .   .   .   .   .   .
 13     4 0600   0    0     1   .   .   X   .   .   .   .
 14     4 2300   0    0     1   X   .   .   .   .   .   .
 15     5 0700   0    0     1   .   .   .   .   .   .   .
 16     5 0900   0    0     1   .   .   X   .   .   .   .
 17     5 1600   0    0     1   .   .   .   X   .   .   .
 18     5 1900   0    0     1   .   .   X   .   .   .   .
 19     5 0100   0    0     1   X   .   .   .   .   .   .
 20     6 0800   0    0     1   .   .   X   .   .   .   .
 21     6 0100   0    0     1   X   .   .   .   .   .   .

```