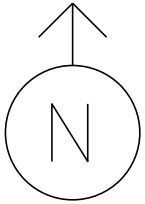


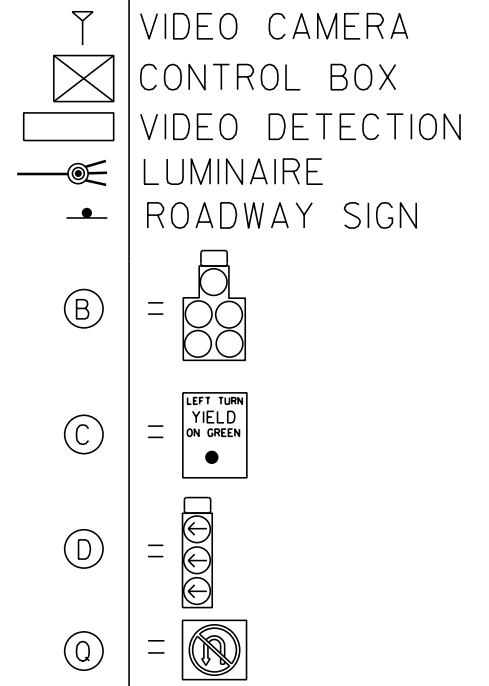
MS # 609



VT-62 WEST

VT-62 WEST

VT-62 EAST



FISCHER ROAD

VT-62 WEST



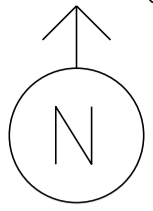
VT-62 WEST

5 ONLY  
2 ONLY

AIRPORT ROAD

NOT TO SCALE

MS # 609



FISCHER ROAD

VT-62 EAST

LANE

LANE

12' | 12' | 12' | 12' | 12' | 12'

LANE LINE 200'

24'

12'

STOP BAR 36'

12'

12'

LANE

LANE LINE 225'

STOP BAR 26'

STOP BAR 26'

LANE LINE 265'

12'

12'

STOP BAR 36'

ONLY

LANE LINE 420'

ONLY

ONLY

19' YIELD

15'

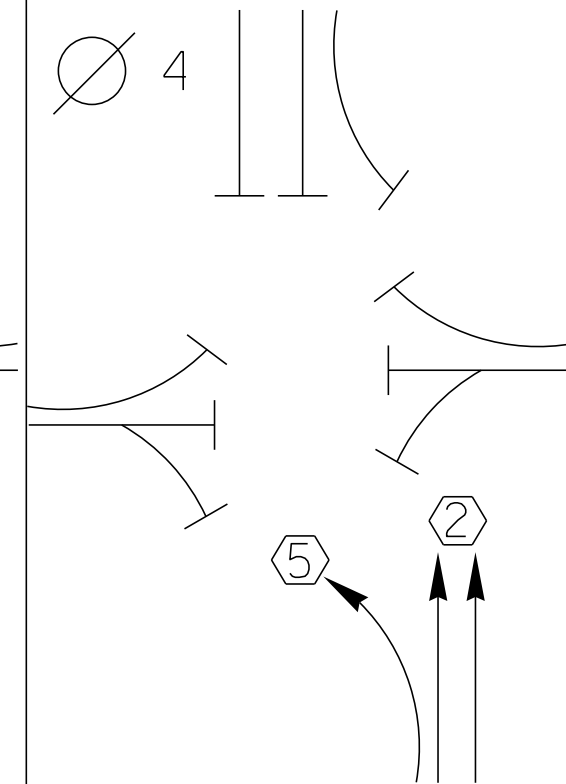
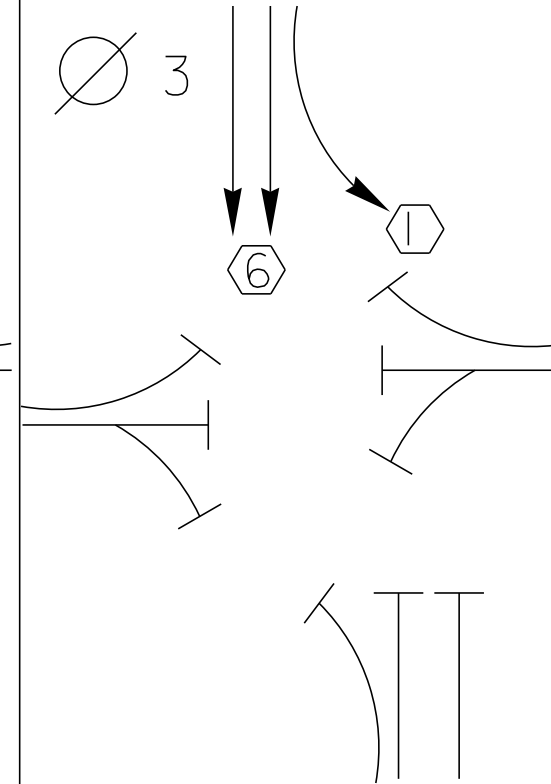
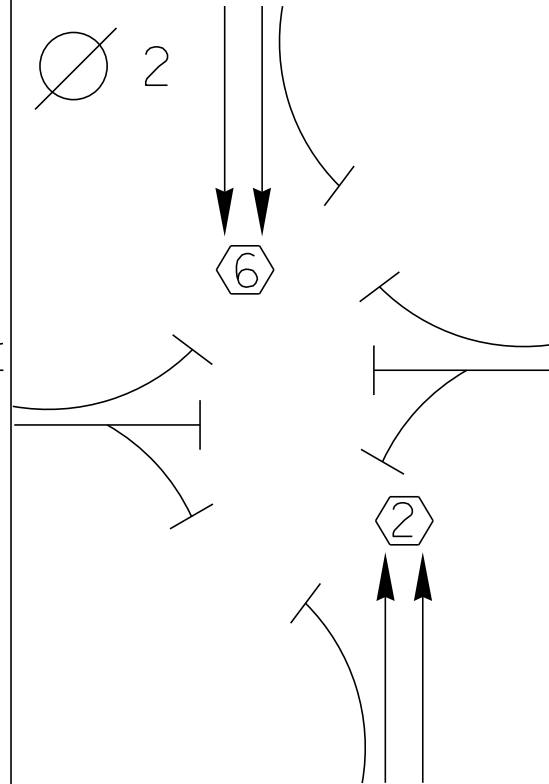
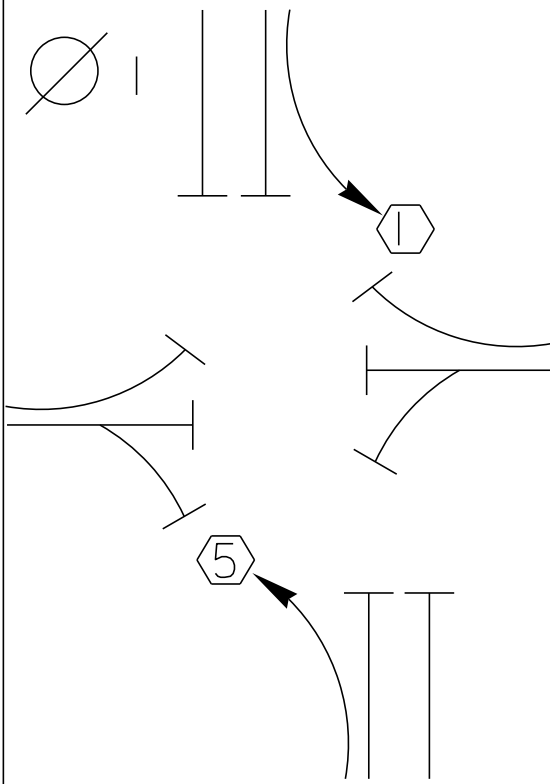
AIRPORT ROAD

VT-62 WEST

12' | 12' | 12' | 12' | 12' | 12'

NOT TO SCALE

D  
I  
A  
G  
R  
A  
M



TIMING

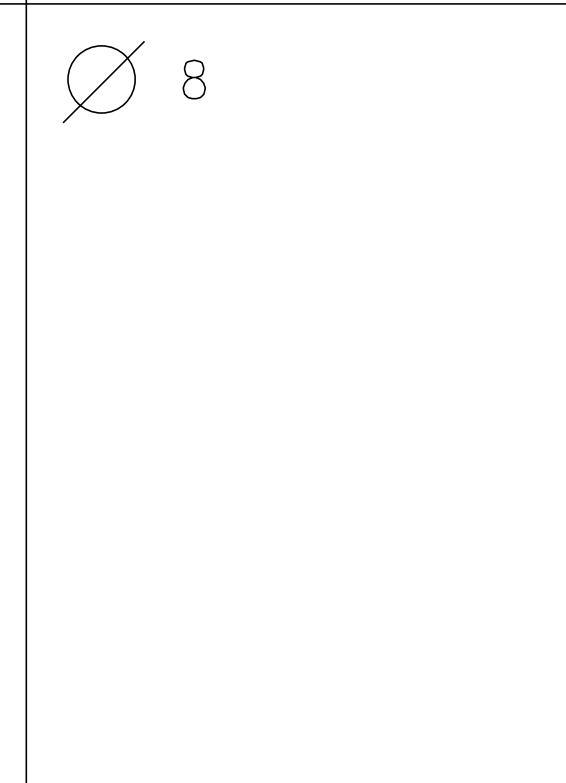
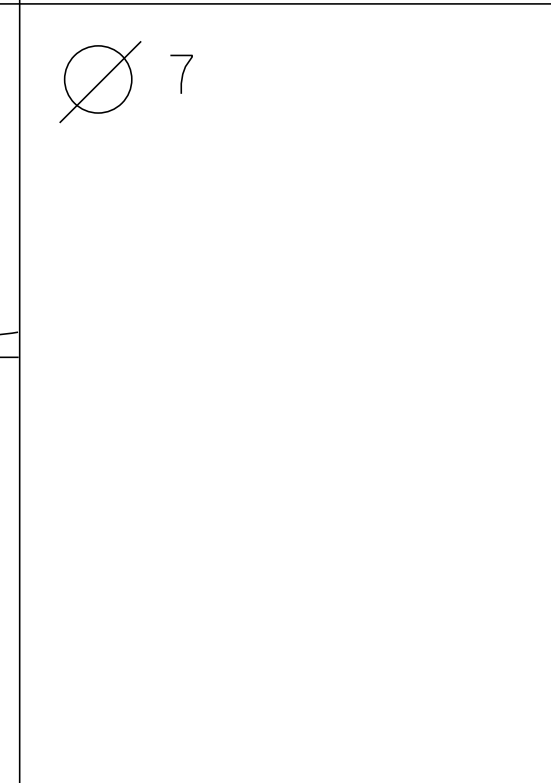
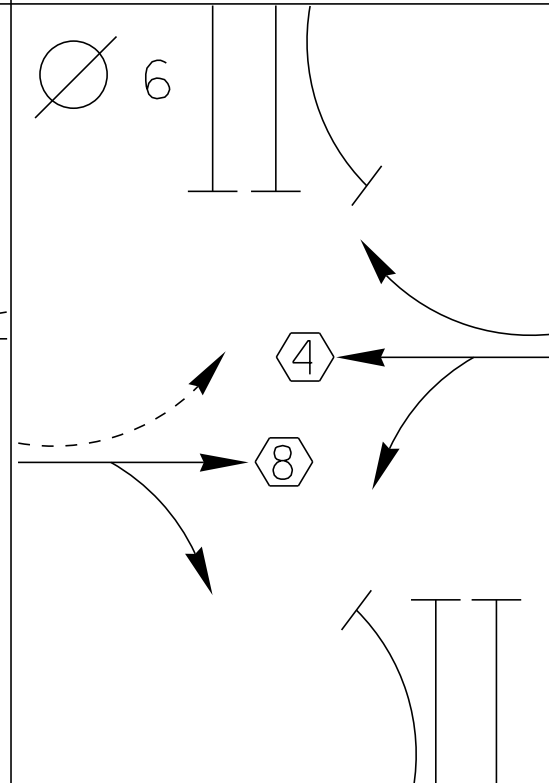
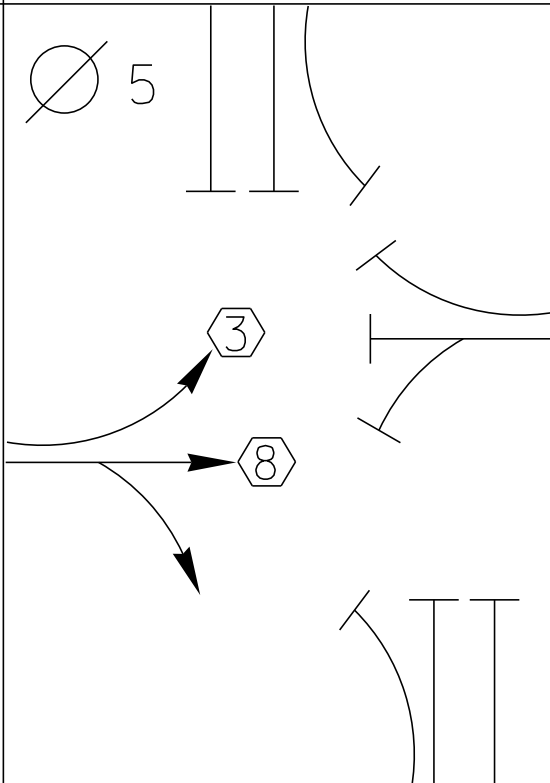
G =  
Y =

G =  
Y =

G =  
Y =

G =  
Y =

D  
I  
A  
G  
R  
A  
M



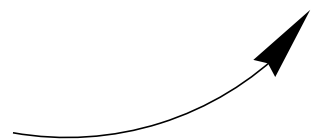
TIMING

G =  
Y =

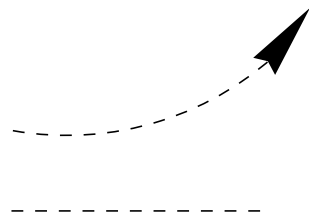
G =  
Y =

G =  
Y =

G =  
Y =



PROTECTED  
TURNS



PERMITTED  
TURNS  
PEDESTRIAN

CYCLE LENGTH, C = \_\_\_\_\_ S



PS 17 J1 J2 J3 J5

**POWER SUPPLY**

POWER  ON

CH1  1A SB

CH2  1A SB

CH3  1A SB

CH4  1A SB

**VIDEO**

VIP/3D.2

VIDEO SELECT RECALL

VIDEO OUT

RESET

TRAFICON

**VIDEO**

VIP/3D.2

VIDEO SELECT RECALL

VIDEO OUT

RESET

TRAFICON

**VIDEO**

VIEWCOM

LAN

LAN

Video Out

Reset

Service

NAZTEC INC.

1022-2031

PC #2

JUMPER

SERIES 900

TC2

Control NO DATA Cabinet System  
NO DATA NO DATA OFFLIN

SYSTEM P-A

PC/PRINT

PS 175

VIP/3D.2

VIP/3D.2

ED1

TRAFICON

TRAFICON

VIEWCOM

SERIES 900 TS2

OPERATION

1. PRESS ANY KEY TO ACTIVATE DISPLAY
2. PRESS MAIN MENU (DISP CTRL) FOR MAIN MENU
3. PRESS # KEY OF MAIN MENU ITEM TO SELECT
4. PRESS ALT FCN THREE FOR HELP & TO END HELP

FUNCTIONS

ENTR ENTER DATA OR EXECUTE COMMAND  
 ESC ESCAPE TO PREVIOUS SCREEN/MENU  
 MAIN/DSP IF NOT AT MAIN MENU, DISPLAY MAIN MENU IMMEDIATELY  
 IF AT MAIN MENU, TOGGLE BACKLIGHT ON/OFF

ALTERNATE FUNCTIONS

PRESS ALT FCN, THEN ONE OF THE FOLLOWING:

DISP CLEAR ENTRY  
 ALT FCN TOGGLE HELP  
 MAIN/DSP TOGGLE BACKLIGHT  
 9 LOG OFF

NAZTEC, INC.  
 NEMA TRAFFIC CONTROLLER

SYSTEM P-A  
 PC/PRINT  
 FSX



RESET AFTER MODIFYING SWITCHES

FAULT MONITOR FAIL

523 DMPL

RESET POWER MODE

MIN FLASH 1 DUAL SEL OPTIONS

8.0.3 TAB ASCDEF

CVM LOG DISABLE  
 BMD DISABLE  
 WALK DISABLE

1 2 3 4 5 6

SSM SSM

7 8 9 10 11 12

1/4 AMP SLOW BLOW

ECONOLITE

115VAC-1A

24VDC-1/2A

A B

NAZTEC, INC.  
 600 Park Two Dr., Sugar Land,  
 Model No. \_\_\_\_\_  
 Serial No. \_\_\_\_\_

MODEL 200

MODEL SSS-86-10

MODEL 200

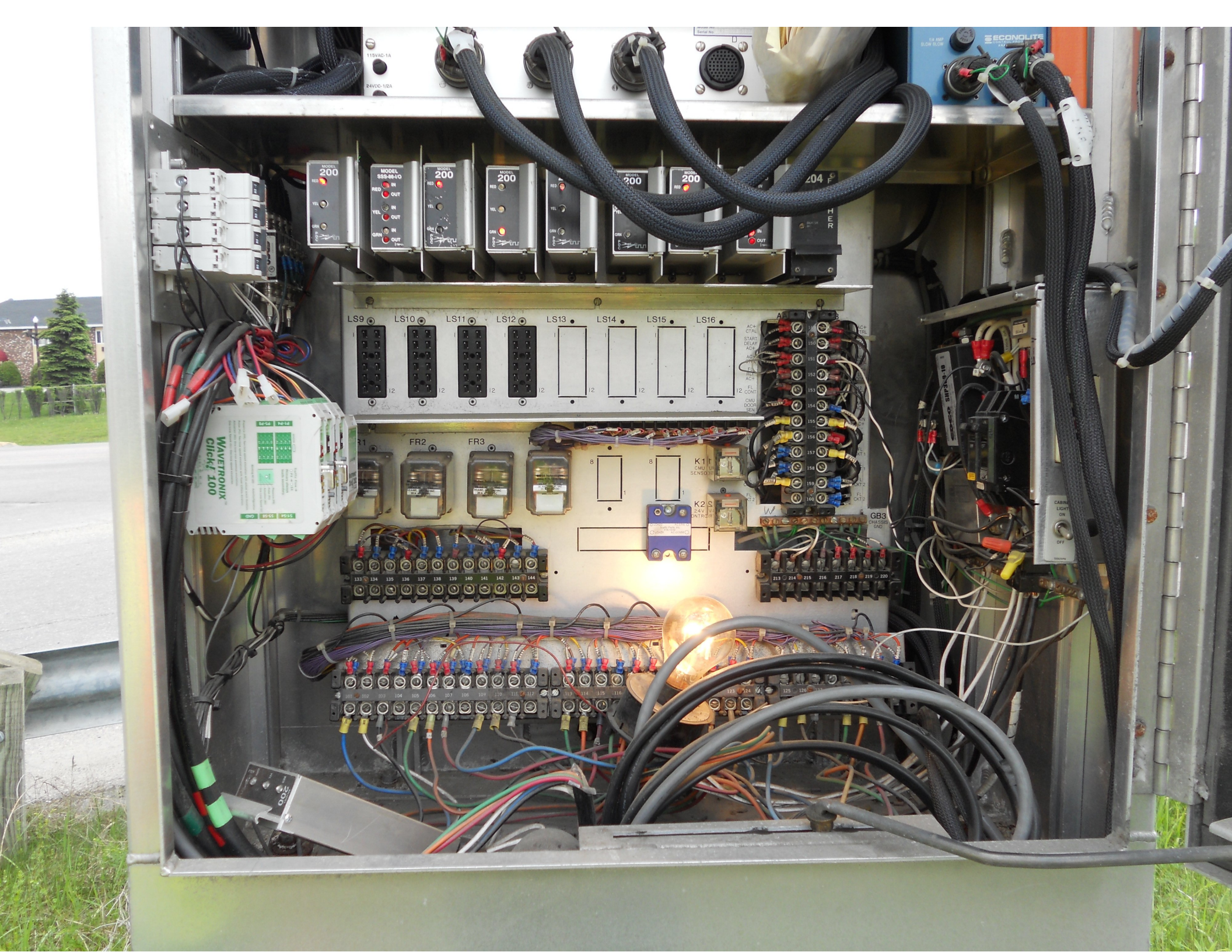
MODEL 200

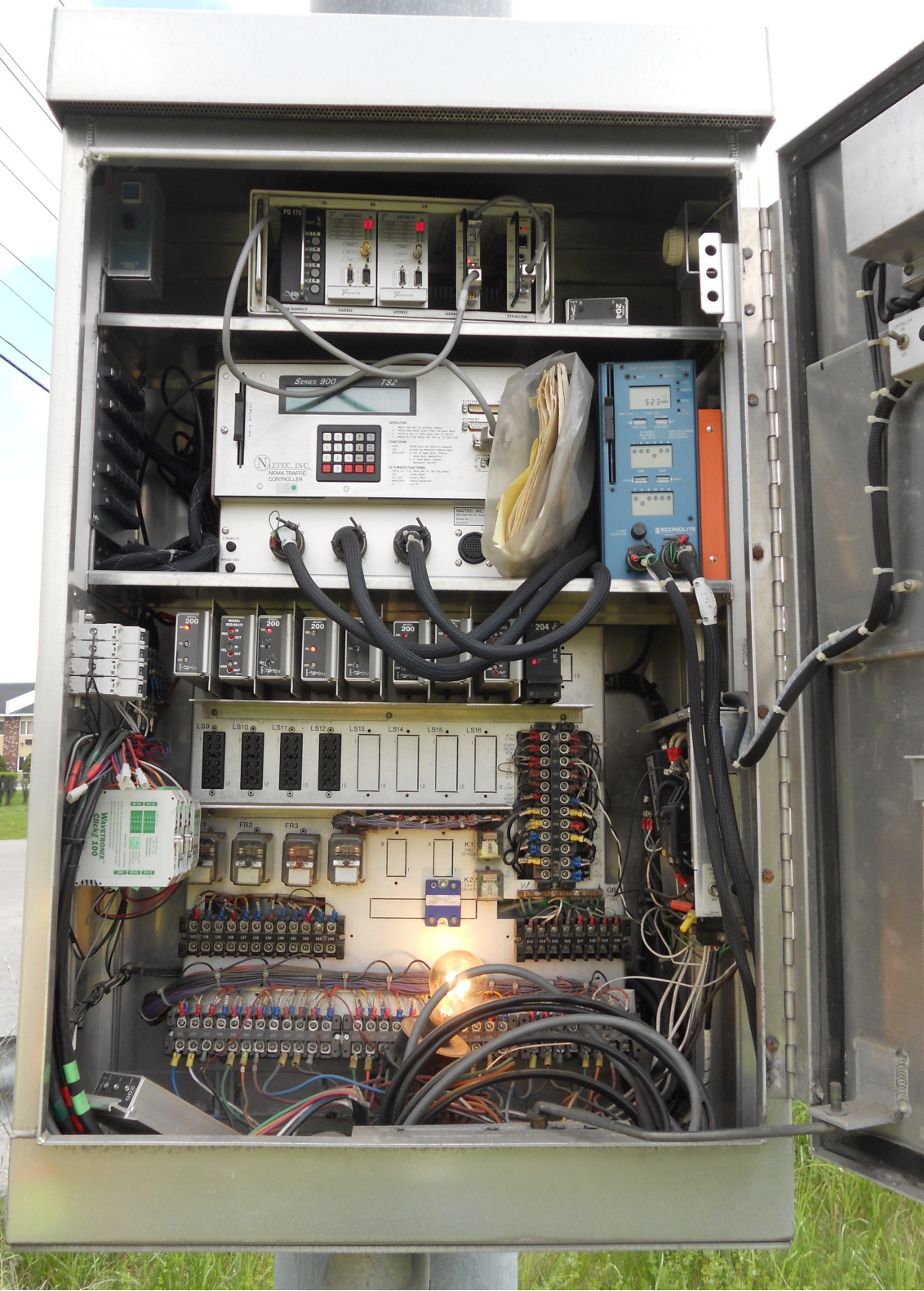
MODEL 200

MODEL SSS-86-10

LS9 LS10 LS11 LS12 LS13 LS14

LASHER







#2 - 150W - H.P.S. - III







HILLTOP  
INN

SLEEPING

↑

50

↑



EAST TO 302  
Barre

WEST TO 302  
Montpelier  
EXIT ONLY



Barre  
Montpelier

50  
Mph





HILLTOP INN

Hospital ←

EAST 62 TO EAST 302  
THRU ↓ ONLY

TO WEST 302 ↓ TO EAST 2  
EXIT ↓ ONLY

→ Airport



Hospital  
←

EAST EAST  
62 TO 302  
THRU ↓ ONLY

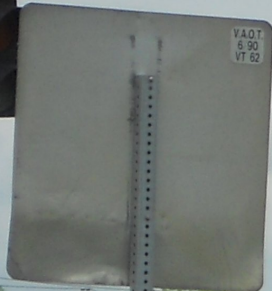
TO TO  
WEST EAST  
302 ↓ 2  
EXIT ↓ ONLY

Airport  
→









AIRPORT RD TH 4





CENTRAL VERMONT MEDICAL





CENTRAL VERMONT MEDICAL CENTER

162A215

Vermont  
162A215







#7 - 150W - H.P.S. - III



#7 - 150W - H.P.S. - III











EDWARD F. KNAPP  
STATE  
AIRPORT  
←

↑ 62 WEST  
TO 89 ↑ HOSPITAL











EAST VERMONT 62  
WEST VERMONT 62  
← →  
TO 302 TO 89  
← →

Honda Civic  
EKS 789

Intersection: MS 609 VT62 & Fisher Road

Date: 06/15/12

Timing Data:

Phase	1	2	3	4	5	6	7	8	9
Phases in use	x	x	x	x	x	x		x	
Min Green	6	14	6	6	6	14	0	6	
Walk	0	0	0	0	0	0	0	0	
Ped Clr	0	0	0	0	0	0	0	0	
Veh Ext	3	2	3	3	3	2	0	3	
MAX 1	18	18	21	24	12	18	0	24	
MAX 2	20	25	13	17	10	25	0	30	
MAX 3	12	18	10	16	12	18	0	16	
Yellow	4	4	3.5	4	3.5	3.5	3.5	4	
All Red	4	3	3	3	3	2	3	3	
Recall to Max									

Coordination Patterns: ACS3/Naztec

Pattern 1										
Cycle Length	Offset		COS							
Splits	Ph 1		Ph 2		Ph 3		Ph 4			
	Ph 5		Ph 6		Ph 7		Ph 8			
	Ph 9		Ph 10		Ph 11		Ph 12			
Pattern 2(21)										
Cycle Length	Offset		COS							
Splits	Ph 1		Ph 2		Ph 3		Ph 4			
	Ph 5		Ph 6		Ph 7		Ph 8			
	Ph 9		Ph 10		Ph 11		Ph 12			
Pattern 3										
Cycle Length	Offset		COS							
Splits	Ph 1		Ph 2		Ph 3		Ph 4			
	Ph 5		Ph 6		Ph 7		Ph 8			
	Ph 9		Ph 10		Ph 11		Ph 12			

Day Plan [1]

Event	Action Plan	Step Begins
1	54	00:00
2	5	05:00
3	4	09:00
4	5	19:00
5		
6		
7		
8		

Day Plan [2]

Event	Action Plan	Step Begins
1	54	00:00
2	4	07:00
3		
4		
5		
6		
7		
8		

Action Plan

Action Plan	Pattern
54	254
5	255-Flash