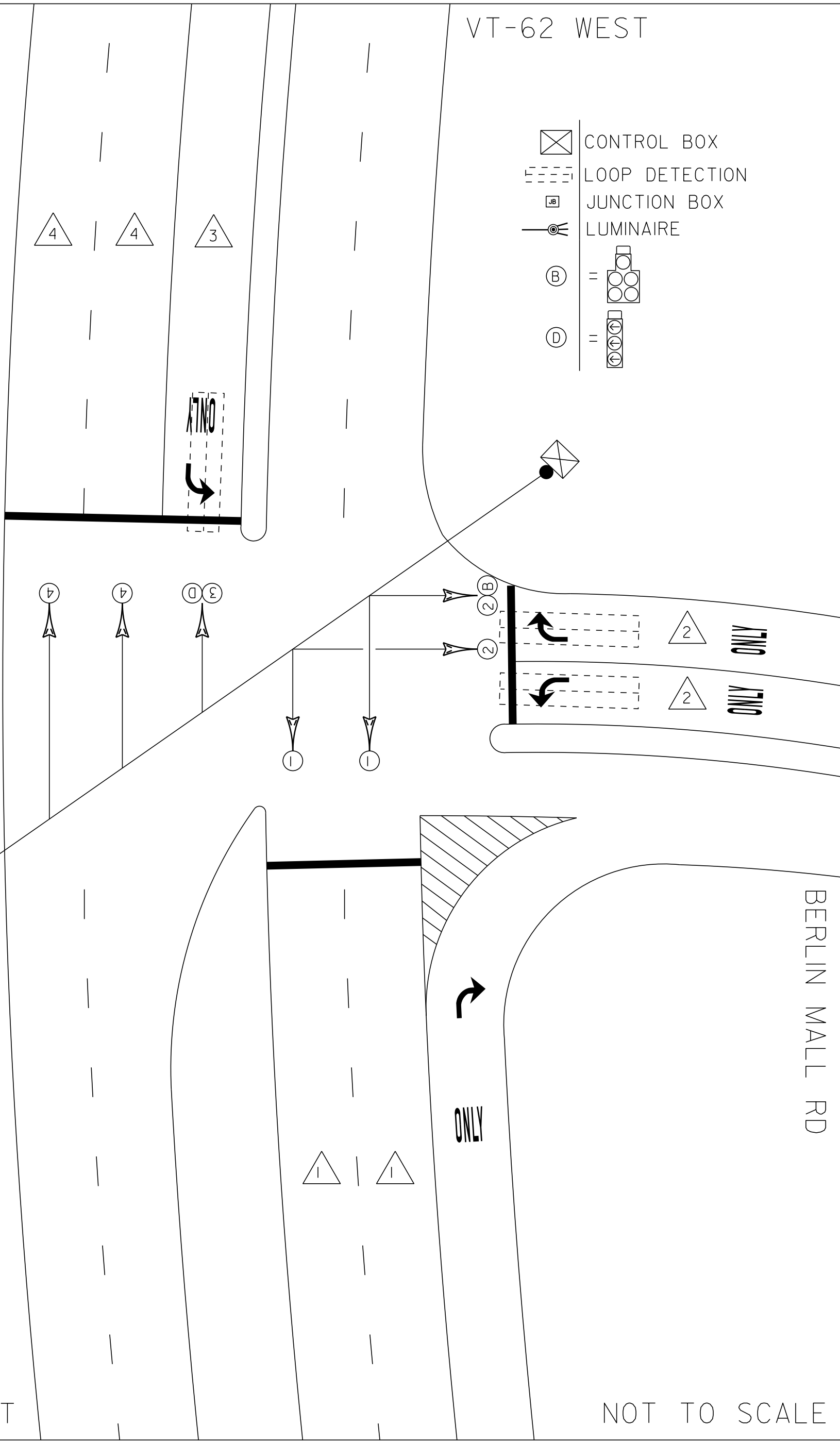
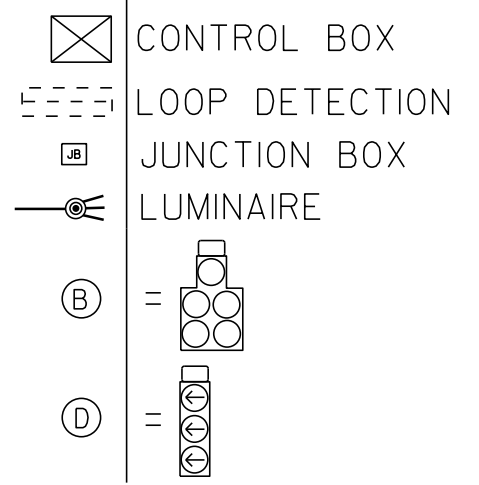
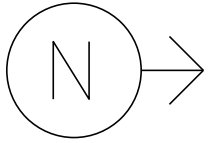


MS # 608

VT-62 WEST

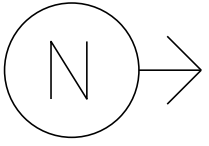


VT-62 EAST

BERLIN MALL RD

NOT TO SCALE

MS # 608



12'

12'

12'

12'

12'

VT-62 WEST

LANE LINE 520'

ONLY



STOP BAR 35'

STOP BAR 31'

LANE LINE 110'

ONLY

12'

ONLY

12'

STOP BAR 24'



ONLY

BERLIN MALL RD

VT-62 EAST

12'

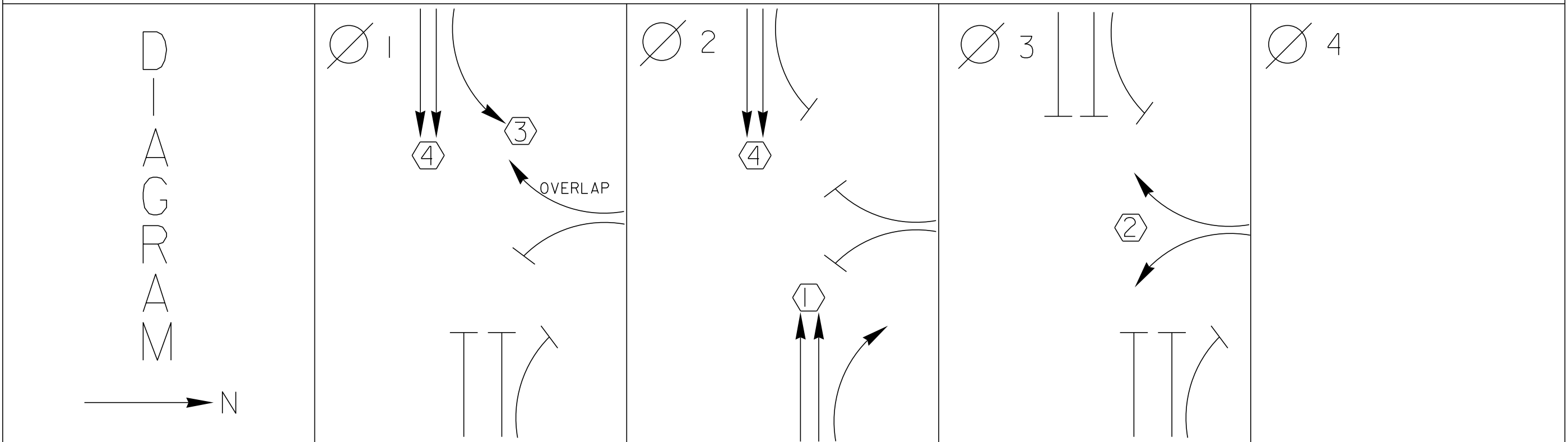
12'

12'

12'

12'

NOT TO SCALE



TIMING	G = Y =	G = Y =	G = Y =	G = Y =
--------	------------	------------	------------	------------



TIMING	G = Y =	G = Y =	G = Y =	G = Y =
--------	------------	------------	------------	------------

	PROTECTED TURNS	 	PERMITTED TURNS PEDESTRIAN	CYCLE LENGTH, C = _____ S
--	--------------------	--	--------------------------------------	---------------------------



 **ECONOLITE**
ANAHEIM, CALIFORNIA



DANGER
115 VOLTS A.C.

WARNING
DO NOT OPERATE
CABINET WITHOUT
CONFLICT MONITOR UNIT

1555-98

FUSE
ECONOLITE
44620

115
FAN OR TEMP
WLT

70 100 130 160

111-L

111-3

MODEL 200

F1 MAIN MENU F2 NEXT SCREEN
F3 SUB MENU F4 NEXT DATA
F5 DISPLAY ADJUST F6 NEXT PAGE
F7 STATUS DISPLAY F8 HELP

CURSOR

1 2 3
4 5 6
7 8 9
ENTER 0 CLEAR

ECONOLITE
CONTROL PRODUCTS, INC.

PORT 3 PORT 1 PORT 2 TLM

TLM SDLC TERM TLM

D C B A

115 VAC 24 VDC SLO-BLO

ASC/2500

RESET AFTER MODIFYING SWITCHES

MIN. FLASH 842.1AB 042.1AB

DUAL SEL. OPTIONS

ABCODE

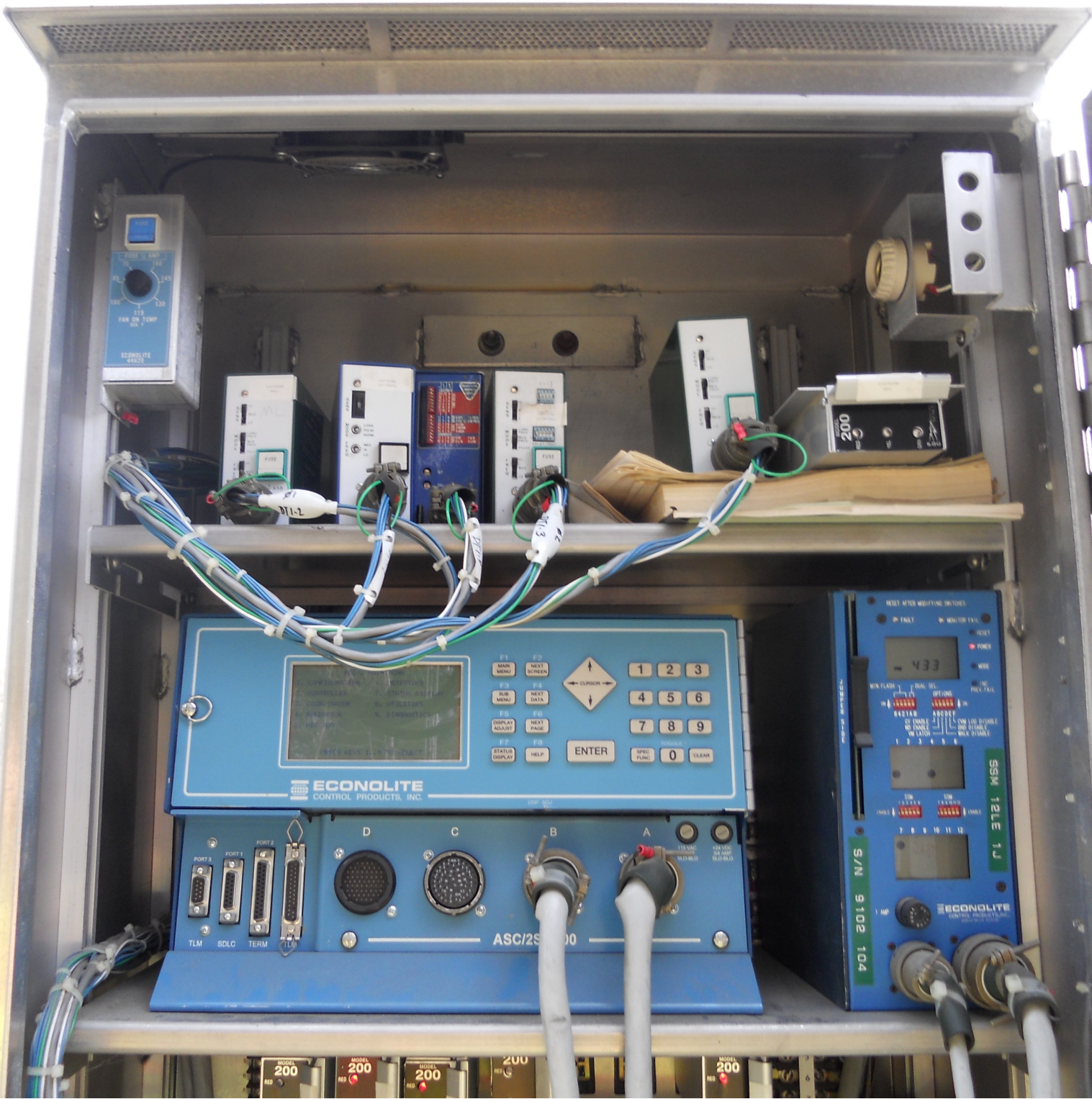
1 2 3 4 5 6

7 8 9 10 11 12

SSM 12LE 1J

S/N 9102 104

ECONOLITE
CONTROL PRODUCTS, INC.



FAN ON TEMP
ECONOLITE
410-21

F1 MAIN MENU F2 NEXT SCREEN
F3 SUB MENU F4 NEXT DATA
F5 DISPLAY ANALYZE F6 NEXT PAGE
F7 STATUS DISPLAY F8 HELP
ENTER
SPEC FUNC 0 CLEAR

ECONOLITE
CONTROL PRODUCTS, INC.

ASC/25000

PORT 3 PORT 1 PORT 2
TLM SDLC TERM

D C B A

115VAC RED-BLUE
115VAC RED-BLUE

RESET AFTER MODIFYING SWITCHES

MIN. FLASH 100% DUAL DEL. 100%
OPTIMUM 100% IN

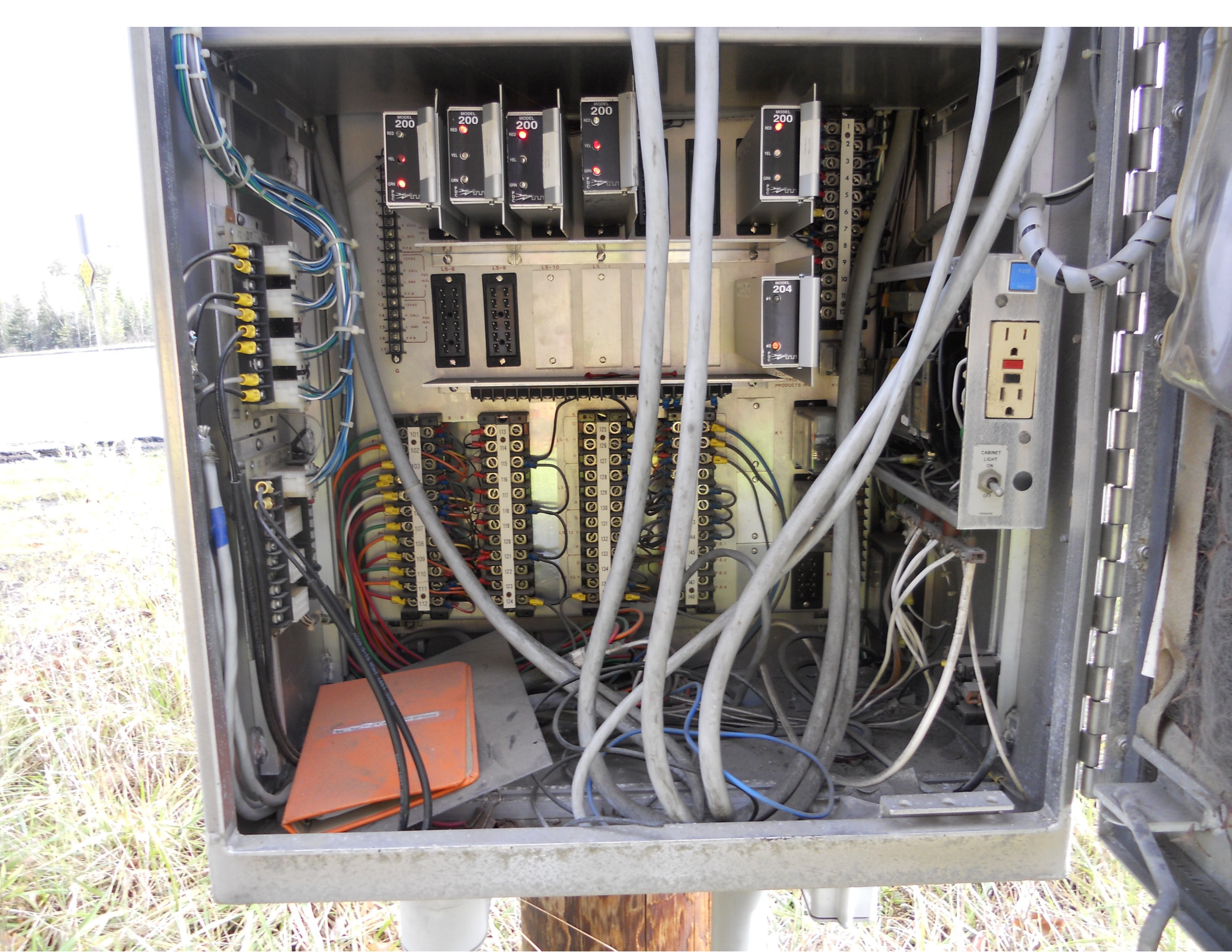
RESET ANCHOR

OF TABLE 1 LOW LOS STABLE
NO LATER NO STABLE
1 2 3 4 5 6 7 8 9 10 11 12

S/N 9 102 104

ECONOLITE
CONTROL PRODUCTS, INC.

MODEL 200
MODEL 200
MODEL 200
MODEL 200
MODEL 200





ONLY







LEFT LANE
MUST
TURN LEFT

ONLY









ONLY





RIGHT LANE
MUST
TURN RIGHT

RIGHT TURN ONLY

?





62











NIC Program Steps

Step	Program	Step Begins	Pattern	Override
------	---------	-------------	---------	----------

TOD Program Steps

 Step 3 Program 1 Step Begins 1500

Flash. Dimming Enable.
 Red Rest Alt Veh Extension
 Spare 5. Det Log Enable.
 Spare 3. Spare 4
 Type 0 Dly Enable. . . Spare 2
 Det Diag Plan. . . . 0

	Phase Number											
	1	2	3	4	5	6	7	8	9	10	11	12
Max 2 Enable	X	X	X
Max 3 Enable
Veh Recall
Veh Max Recall
Ped Recall
Cond Service Inhibit.
Phase Omit
Special Function

Alt Sequence A B C D E F

Step 4 Program 1 Step Begins 1800

Flash. Dimming Enable.
 Red Rest Alt Veh Extension
 Spare 5. Det Log Enable.
 Spare 3. Spare 4
 Type 0 Dly Enable. . . Spare 2
 Det Diag Plan. . . . 0

	Phase Number											
	1	2	3	4	5	6	7	8	9	10	11	12
Max 2 Enable
Max 3 Enable	X	X	X
Veh Recall
Veh Max Recall
Ped Recall
Cond Service Inhibit.
Phase Omit
Special Function

Alt Sequence A B C D E F
