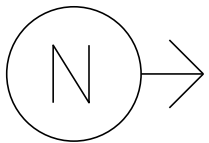


MS # 607



ONLY

ONLY

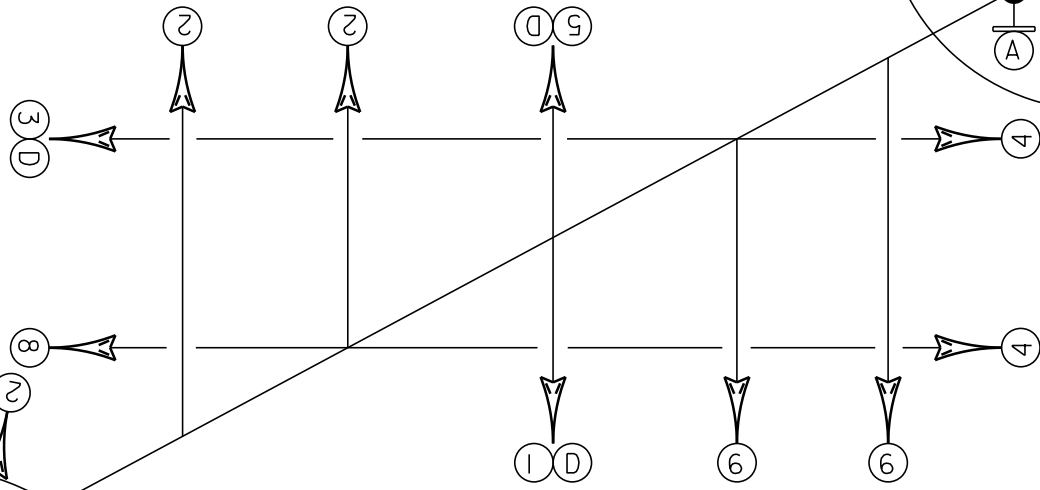
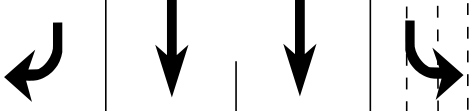
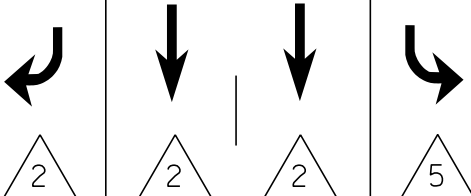
VT-62 WEST

- ⊙ PEDESTAL POST
- ⊙➔ PEDESTRIAN SIGNAL
- ⊥ L.E.D REGULATORY SIGN
- ⊠ CONTROL BOX
- ⋯ LOOP DETECTION
- ⊠ JB JUNCTION BOX
- LUMINAIRE
- STANCHION
- (A) =
- (D) =

PAINÉ TURNPIKE

ONLY

ONLY



ONLY

3



8

8

3
D

2

2

5
D

A

4

4

1
D

6

6

A

8

4

PAINÉ TURNPIKE

ONLY

ONLY

1

6

6

6



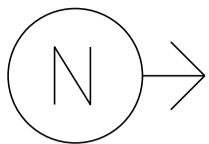
ONLY

ONLY

VT-62 EAST

NOT TO SCALE

MS # 607



VT-62 WEST

PAINÉ TURNPIKE

ONLY

ONLY



12'

12'

12'

12'

12'

12'

LANE LINE 275'

LANE LINE 275'

ONLY

ONLY



STOP BAR 63'

13'

STOP BAR 12'

11'

ONLY

13'



STOP BAR 27'

LANE LINE 150'

13'

11'

CROSSWALK 115'

STOP BAR 51'

PAINÉ TURNPIKE



ONLY

ONLY

LANE LINE 275'

LANE LINE 275'

12'

12'

12'

12'

12'

12'

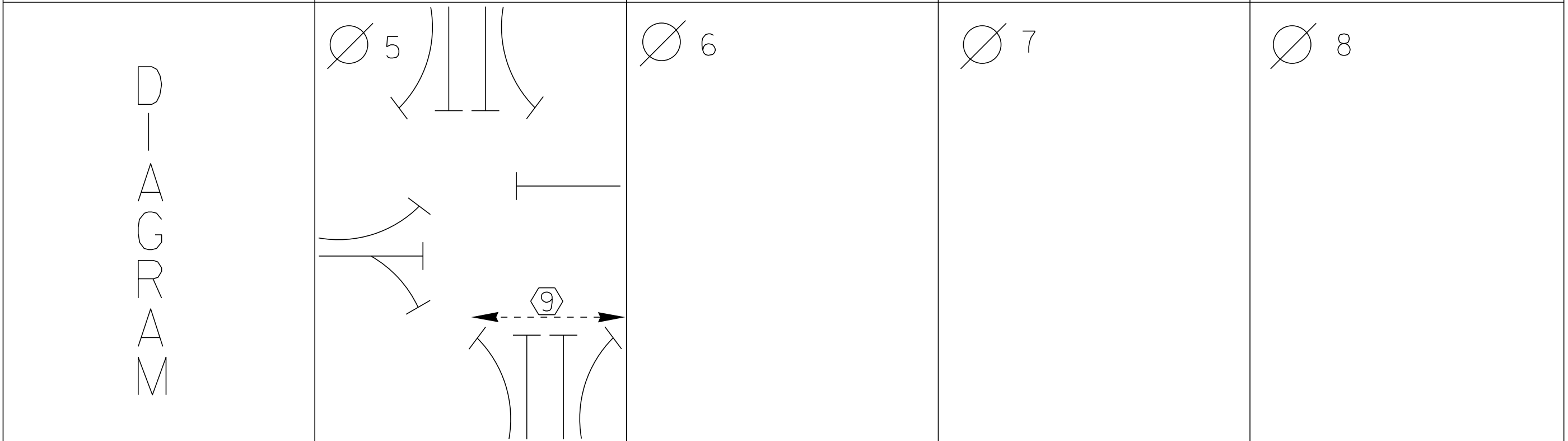
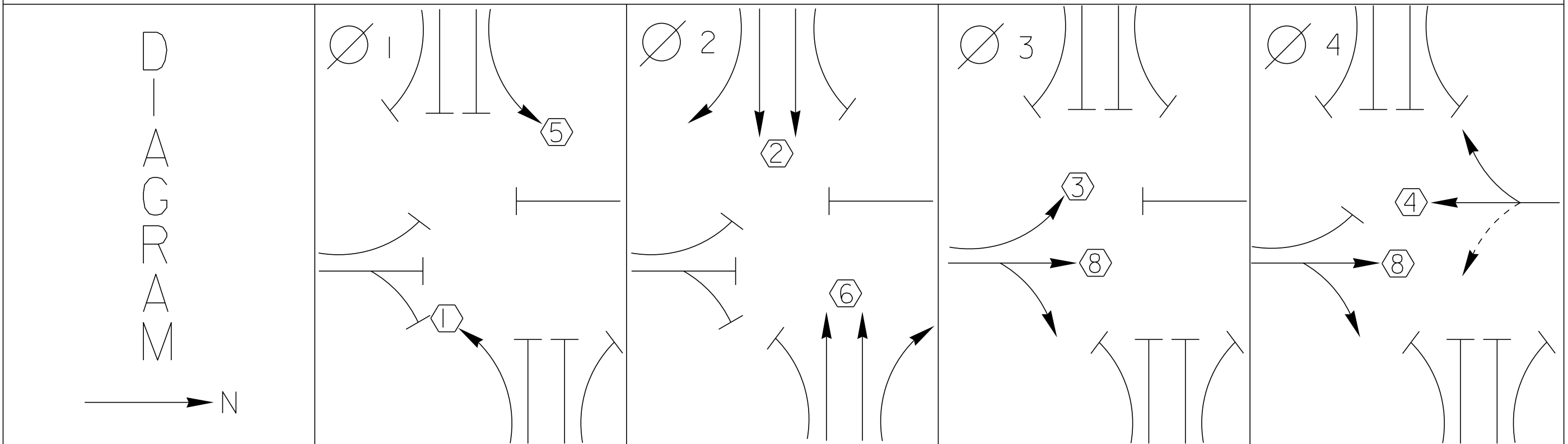


ONLY

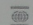
ONLY

VT-62 EAST

NOT TO SCALE





 ECONOLITE

PROPERTY OF
VT. AGENCY OF TRANS.
MAINTENANCE DIV.
AL EMERGENCY CALL
262. TRANS OFFICE
MON-THUR
NIGHTS & WEEKENDS 229-9101



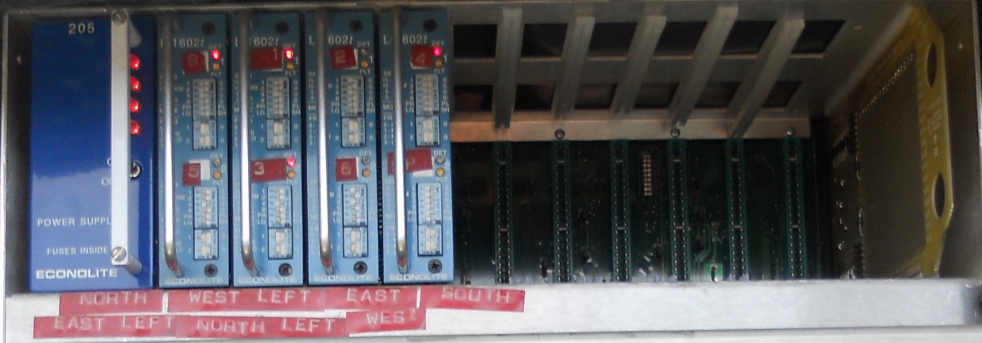
NET WITHOUT
CONTACT MONITOR UN

DANGER
5 VOLTS A.C.

INSTALLATION AND MAINTENANCE
INSTRUCTIONS
SEE MANUAL
FOR DETAILS
© 1997
ELECTRICAL
EQUIPMENT
MANUFACTURING CO.

TURN ON
10-14-97

Orange warning label



ECONOLITE CONTROL PRODUCTS, INC.

A B C D E F G H I J K L

ASC / 100

TELEMEMORY PORT 3 PORT 1 TERMINAL

24 VDC 3/4 AMP SLO-BLO

VAC AMP SLO-BLO

ECONOLITE CONTROL PRODUCTS, INC.

MAIN MENU NEXT SCREEN
SUB MENU NEXT DATA
DISPLAY ADJUST NEXT PAGE
STATUS DISPLAY HELP

ENTER

1 2 3
4 5 6
7 8 9
0 CLEAR

↑
← CURSOR →
↓

TOGGLE SPEC FUNC

RESET AFTER MODIFYING SWITCHES

MONITOR FAIL
RESET
POWER
MODE
INC PREV FAIL

1105 DATE

MIN FLASH DUAL SEL
842 YRS

OPTIONS
ABCD EFGH
CVM LOG DISABLE
BND DISABLE
WALK DISABLE

1 2 3 4 5 6
7 8 9 10 11 12

SSM SSM
ENABLE DISABLE

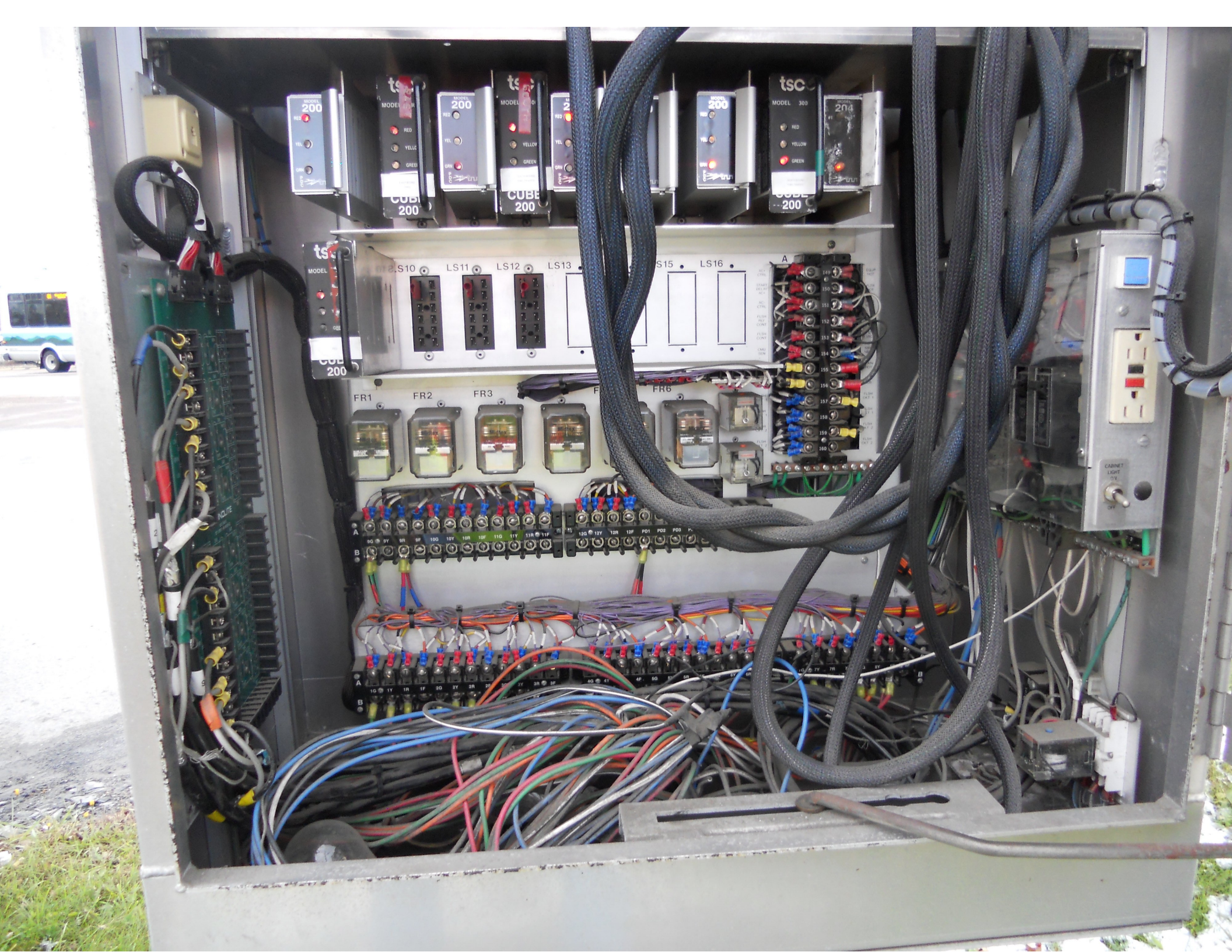
7 8 9 10 11 12

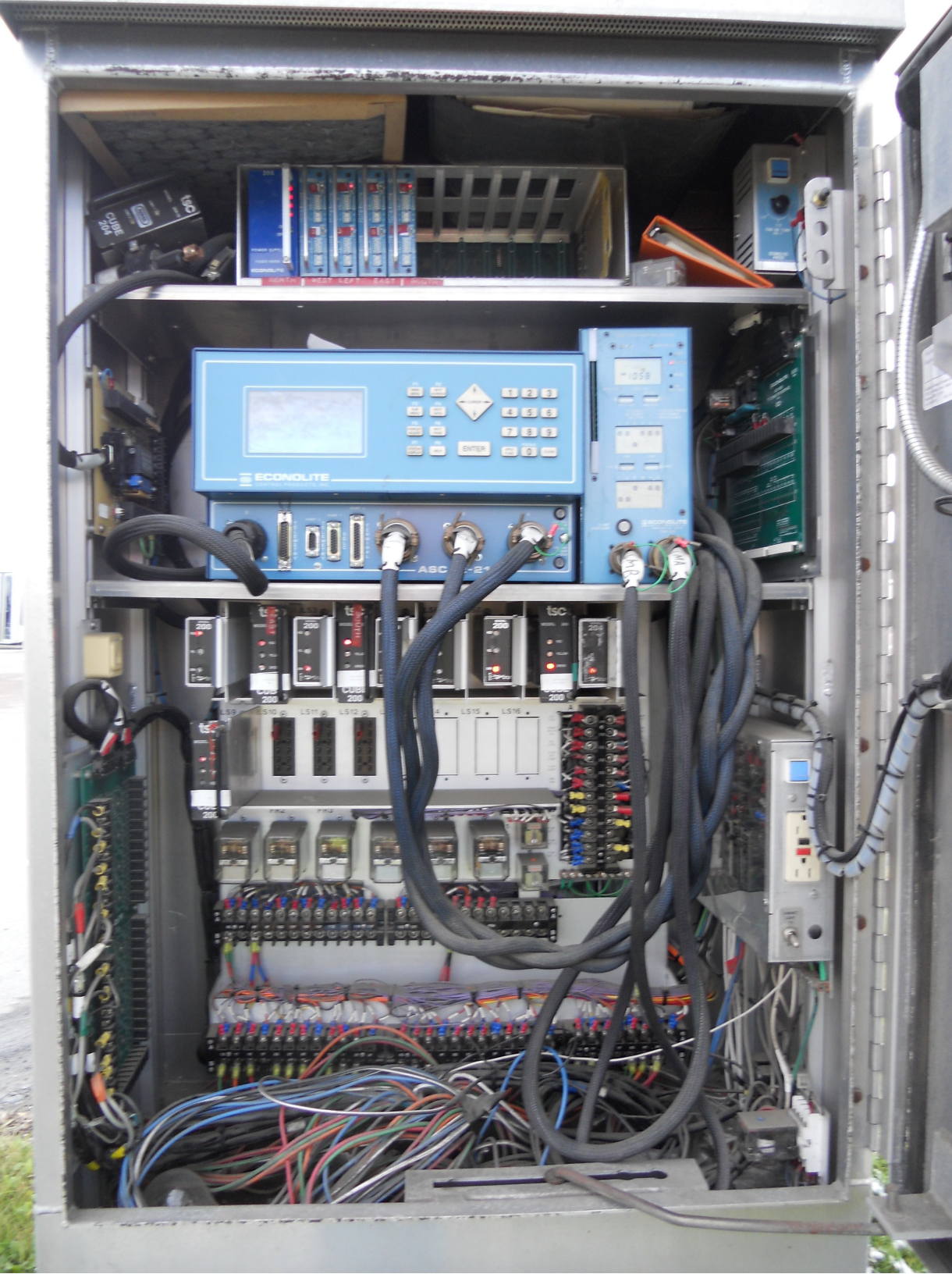
ECONOLITE CONTROL PRODUCTS, INC.
ASC-8000
1" CONNECTOR INTERFACE
-DC-

14 AMP SLOW BLOW

ECONOLITE CONTROL PRODUCTS, INC.
ASC-1000
1" CONNECTOR INTERFACE
-DC-









elster

001133

CONTAINS FCC ID: G2C-R22M SERIAL: 14 827 685

elster
TYPE R2SD

GMP
E14827685

14 827 685

CL200, 240V, 3W, 60Hz FM 2S Watthour Meter Kh1.0 TA 30

LAN ID: 076-0007568421

ZFCWMA0000-05
R4 1-1258





ONLY

ONLY

ONLY











ONLY

ONLY

HO



NL

END OF STAIRWAY

HOPPER

Allegion



ONLY

HOFFER Auditorium

TO 89

FEEL 576





SPEED
LIMIT
35

LEGAL LOAD
LIMIT
24,000
POUNDS



NO U
TURN

35

Berlin Volunteer Fire Department
Annual Hurter's Breakfast
Riverton Station on Route 12 November 8, 9, 10
4am to 10am



ONLY

HOFFER
for Auditor

Mass Govern



U/C
061-150737
55821
1997

U.M.C.
OGA-1507.32
55 K.S.I.
1997









PAINE TRPK N TH 1













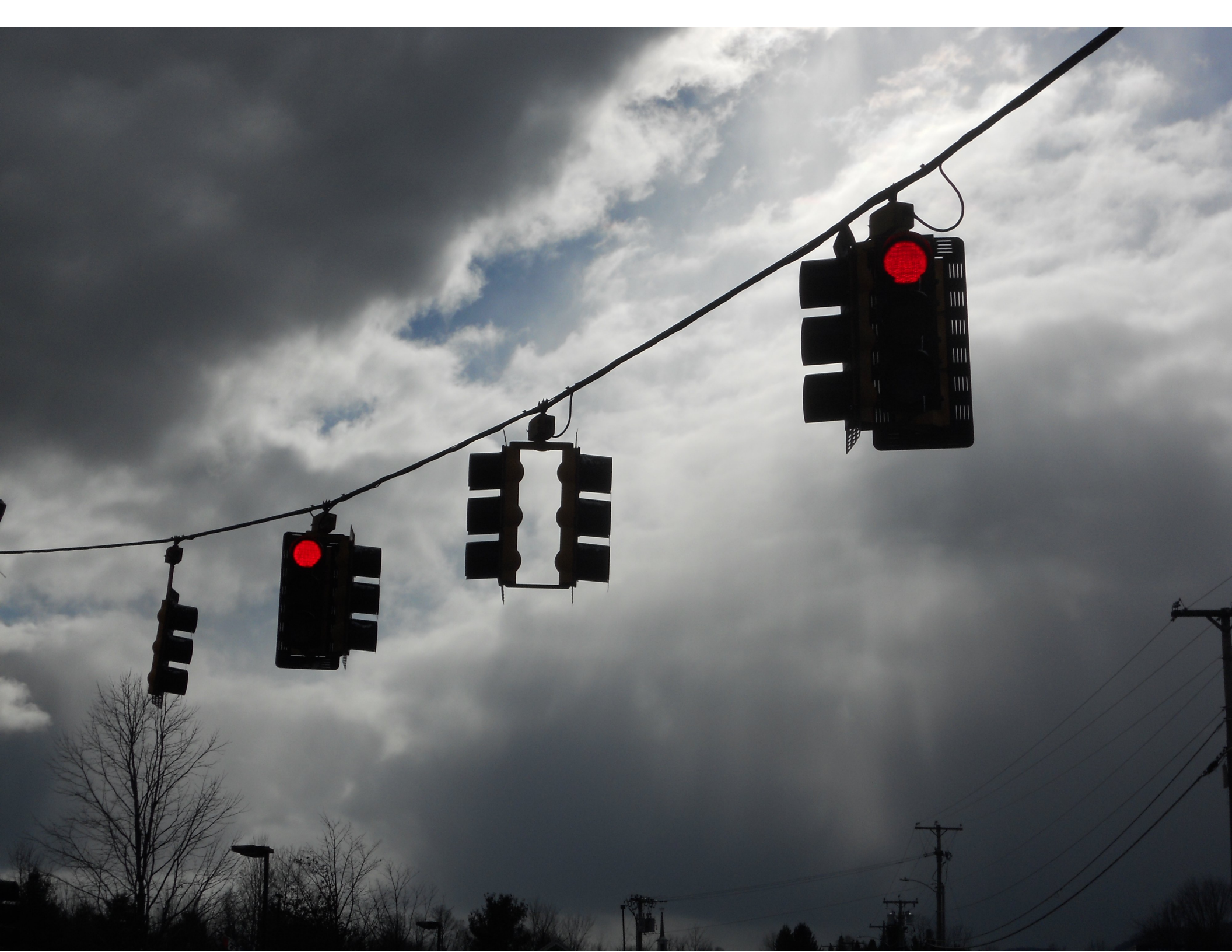
Team & Country

Honda

EAST TO
VERMONT ROUTE 62 ROUTE 89
← →

Apparees









U.S.C.
02-1500182
10/13/17
10/17

U.M.C.
OGA-15.0" X 32"
55 K.S.
1997

NIC Program Steps

Step	Program	Step Begins	Pattern	Override
1	1	0500	0	NO
2	1	0700	0	NO
3	1	0900	0	NO
4	1	1500	0	NO
5	1	1800	0	NO
6	2	0700	0	NO
7	2	0900	0	NO
8	2	1500	0	NO
9	2	1800	0	NO

TOD Program Steps

Step 1 Program 1 Step Begins 0001

Flash. Dimming Enable.
Red Rest Alt Veh Extension
Spare 5. Det Log Enable.
Spare 3. Spare 4
Type 0 Dly Enable. . . Spare 2
Det Diag Plan. . . . 0

Phase Number
1 2 3 4 5 6 7 8 9 10 11 12
Max 2 Enable
Max 3 Enable
Veh Recall
Veh Max Recall
Ped Recall
Cond Service Inhibit.
Phase Omit
Special Function

Alt Sequence
A B C D E F

Step 2 Program 1 Step Begins 0500

Flash. Dimming Enable.
Red Rest Alt Veh Extension
Spare 5. Det Log Enable.
Spare 3. Spare 4
Type 0 Dly Enable. . . Spare 2
Det Diag Plan. . . . 0

Phase Number
1 2 3 4 5 6 7 8 9 10 11 12
Max 2 Enable
Max 3 Enable
Veh Recall
Veh Max Recall
Ped Recall
Cond Service Inhibit.
Phase Omit
Special Function

Alt Sequence
A B C D E F

TOD Program Steps

 Step 3 Program 2 Step Begins 0001

Flash. Dimming Enable.
 Red Rest Alt Veh Extension
 Spare 5. Det Log Enable.
 Spare 3. Spare 4
 Type 0 Dly Enable. . . Spare 2
 Det Diag Plan. . . . 0

	Phase Number											
	1	2	3	4	5	6	7	8	9	10	11	12
Max 2 Enable
Max 3 Enable
Veh Recall
Veh Max Recall
Ped Recall
Cond Service Inhibit.
Phase Omit
Special Function

Alt Sequence A B C D E F

Step 4 Program 2 Step Begins 0700

Flash. Dimming Enable.
 Red Rest Alt Veh Extension
 Spare 5. Det Log Enable.
 Spare 3. Spare 4
 Type 0 Dly Enable. . . Spare 2
 Det Diag Plan. . . . 0

	Phase Number											
	1	2	3	4	5	6	7	8	9	10	11	12
Max 2 Enable
Max 3 Enable
Veh Recall
Veh Max Recall
Ped Recall
Cond Service Inhibit.
Phase Omit
Special Function

Alt Sequence A B C D E F

TOD Program Steps

Step 5 Program 1 Step Begins 0600

Flash.	Dimming Enable.
Red Rest	Alt Veh Extension
Spare 5.	Det Log Enable.
Spare 3.	Spare 4
Type 0 Dly Enable.	Spare 2
Det Diag Plan. 0	

	Phase Number											
	1	2	3	4	5	6	7	8	9	10	11	12
Max 2 Enable
Max 3 Enable
Veh Recall
Veh Max Recall
Ped Recall
Cond Service Inhibit.
Phase Omit
Special Function

	A	B	C	D	E	F
Alt Sequence
