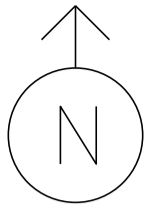


VT 117 NORTH

MS # 580



US 2 WEST

US 2 EAST

2

4

6

2

2

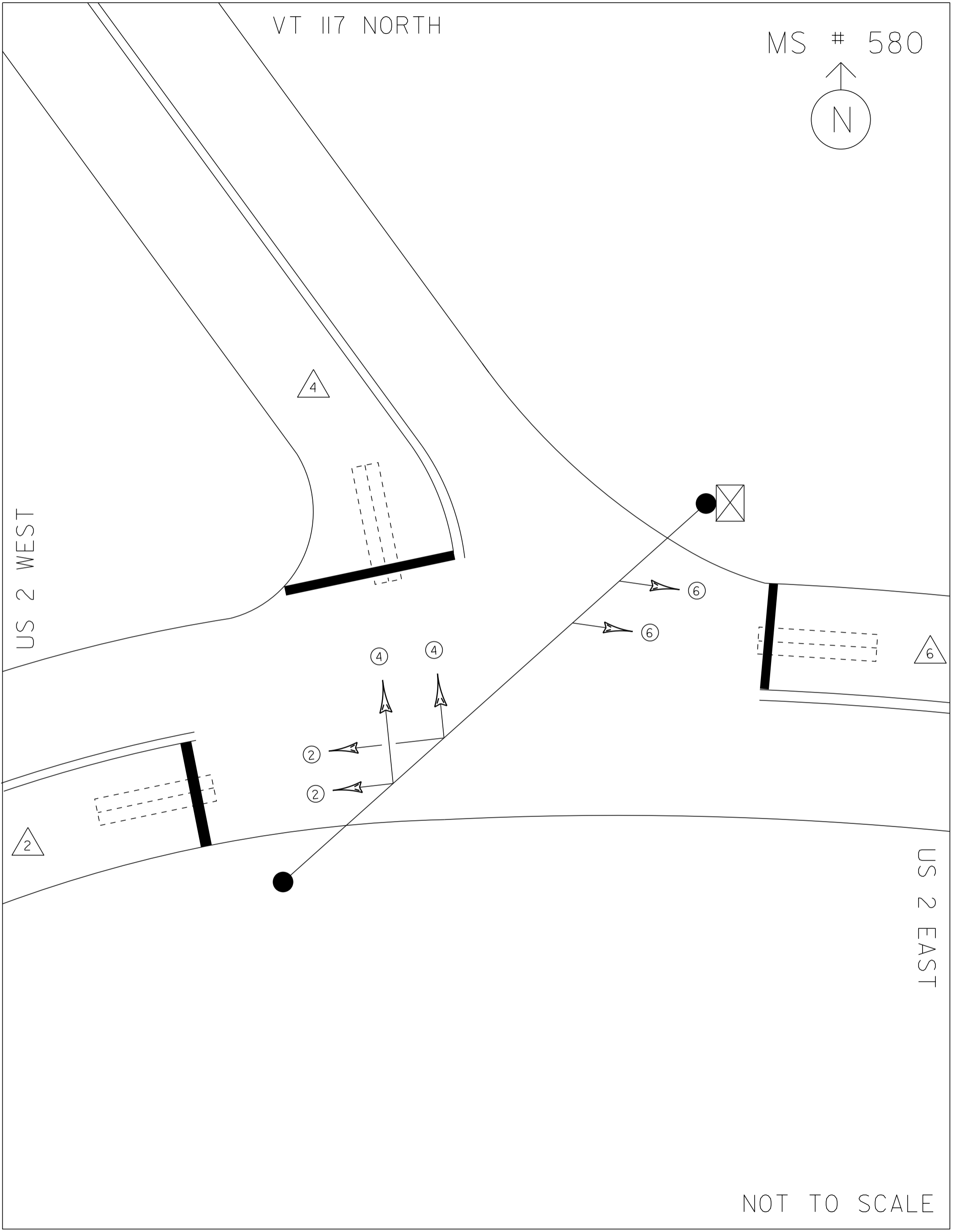
4

4

6

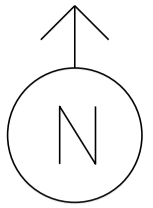
6

NOT TO SCALE



VT 117 NORTH

MS # 580



13'

13'

US 2 WEST

STOP BAR 38'

STOP BAR 16'

16'

11'

STOP BAR 12'

13'

11'

US 2 EAST

NOT TO SCALE

<p style="text-align: center;">D I A G R A M</p> <p style="text-align: center;">N ↑</p>	<p>Ø 1</p>	<p>Ø 2</p>	<p>Ø 3</p>	<p>Ø 4</p>
<p>TIMING</p>	<p>G = Y =</p>	<p>G = Y =</p>	<p>G = Y =</p>	<p>G = Y =</p>
<p style="text-align: center;">D I A G R A M</p>	<p>Ø 5</p>	<p>Ø 6</p>	<p>Ø 7</p>	<p>Ø 8</p>
<p>TIMING</p>	<p>G = Y =</p>	<p>G = Y =</p>	<p>G = Y =</p>	<p>G = Y =</p>



CYCLE LENGTH, C = \_\_\_\_\_ S



ECONOLITE

PROPERTY OF  
VI. AGENCY OF TRANSPORTATION  
MAINTENANCE DIV.  
IN EMERGENCY CASES  
USE THIS KEY  
NOTICE & WARNING

PROPERTY OF:  
VT. AGENCY OF TRANS.  
MAINTENANCE DIV.

IN EMERGENCY CALL:  
DIST. TRANS. OFFICE

655 1580

NIGHTS & WEEKENDS: 388 45

115V

**WARNING**

DO NOT OPERATE  
CABINET WITHOUT  
CONFLICT MONITOR UNIT

**DANGER**

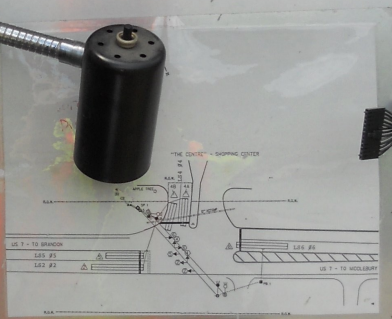
115 VOLTS A.C.

CONTROLLER  
ON  
OFF

AUTO  
CLASS

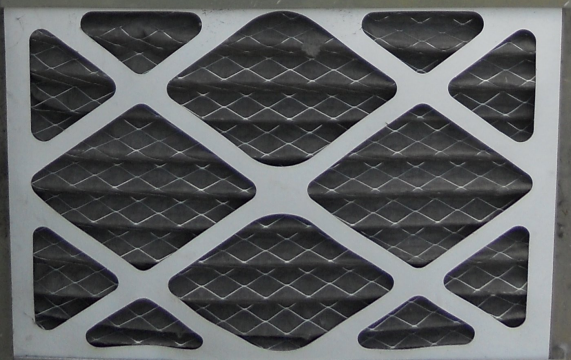
MAIN  
ON  
OFF

STOP TIME  
ON  
OFF

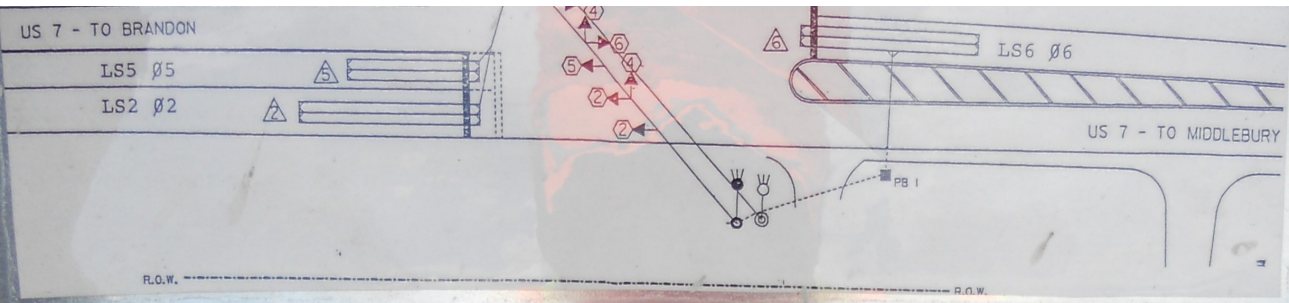


115V  
pin  
2K  
20K

TURNED ON 21 OCT. 94 RE-TURNED ON 1-27-98

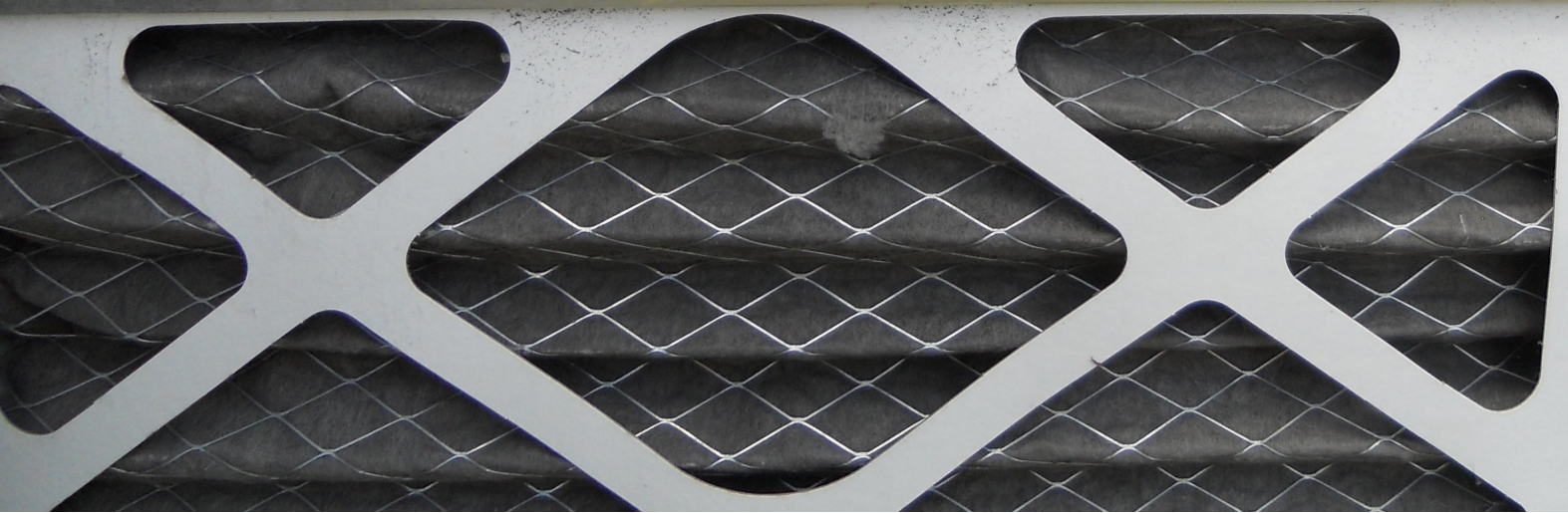


2kin  
5- W 2K  
6- OA  
8- 2-DA

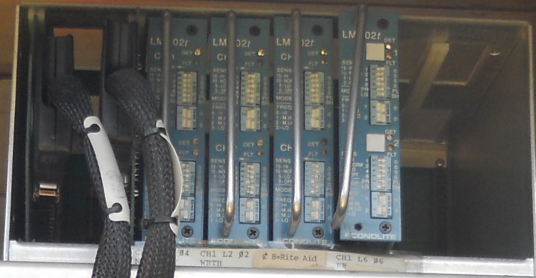


TURNED ON  
21 OCT. 94

RE-TURNED ON  
1-27-98







**ECONOLITE CONTROL PRODUCTS, INC.**

DISP. 201

MINI DISPLAY: 123456789011  
PRIORITY: 1 2 3 4 5 6 7 8 9 0  
TIME: 10:04  
STEP: 2  
DATE: 07-28-72 14120410

F1 MAIN MENU, F2 NEXT SCREEN, F3 SUB MENU, F4 NEXT DATA, F5 DISPLAY ADJUST, F6 NEXT PAGE, F7 STATUS DISPLAY, F8 HELP

1 2 3, 4 5 6, 7 8 9, 0 CLEAR

ENTER, SPEC FUNC, TOGGLE

Cursor: ← CURSOR →

**ASC 100**

PORT 3, PORT 1, PORT 2, TLM, SDLC, TERM

D, C, B, A

118 VAC 1 AMP SLO-SLO, 124 VDC 50 AMP SLO-SLO

16C TRAFFIC SIGNAL CORP. RED

**ECONOLITE CONTROL PRODUCTS, INC.**

RESET AFTER MODIFYING SWITCHES

FAULT, MONITOR FAIL, RESET, POWER, MODE

MINI FLASH, DUAL SEL., OPTIONS, INC. PREV. FAIL

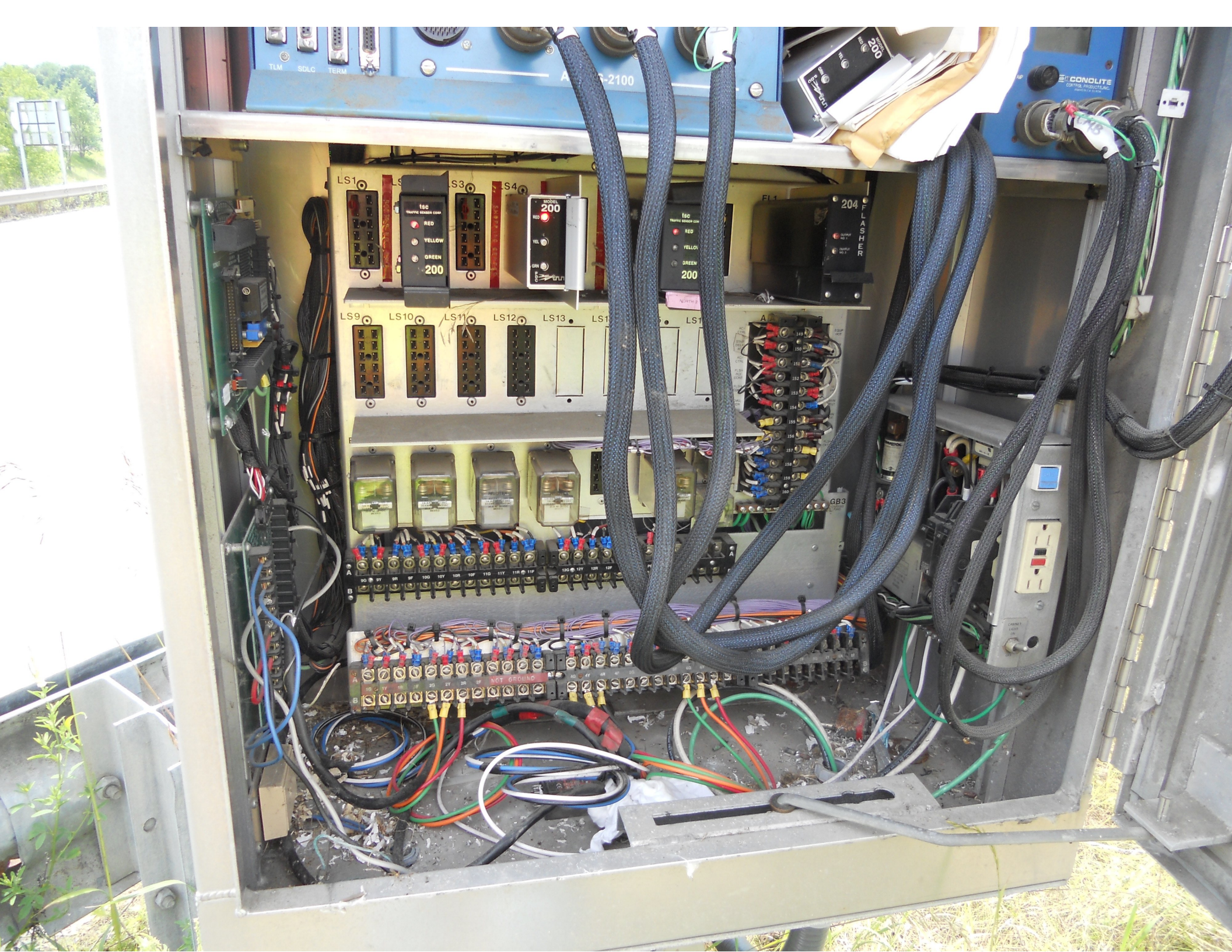
3:58

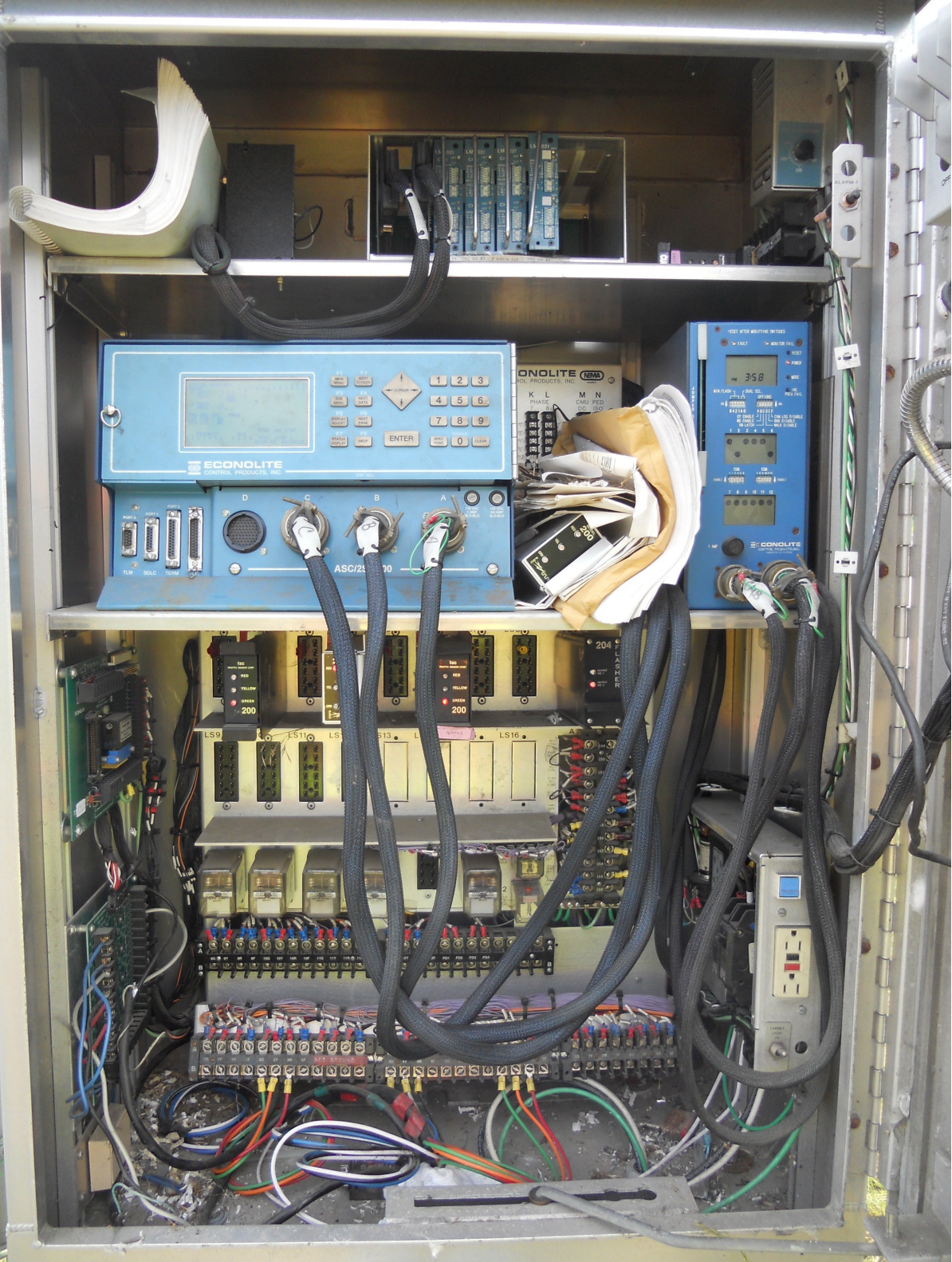
842 TAB, A B C D E F, G H I J K L M N O P Q R S T U V W X Y Z

1 2 3 4 5 6, 7 8 9 10 11 12

1 AMP

16C TRAFFIC SIGNAL CORP. RED







ELSTER



KILOWATTHOURS

01M0126G01

ELSTER  
S  
SINGLE-STATOR WATTHOUR METER  
TYPE ASHR S. 176320L25AA  
FORM 2S 200 CL 240 V 3 W 60 Hz TA 30 Kh 7.2

836 202

MADE IN U.S.A.

\*AG025646710  
25 646 710

SERVICE  
3CONNECT

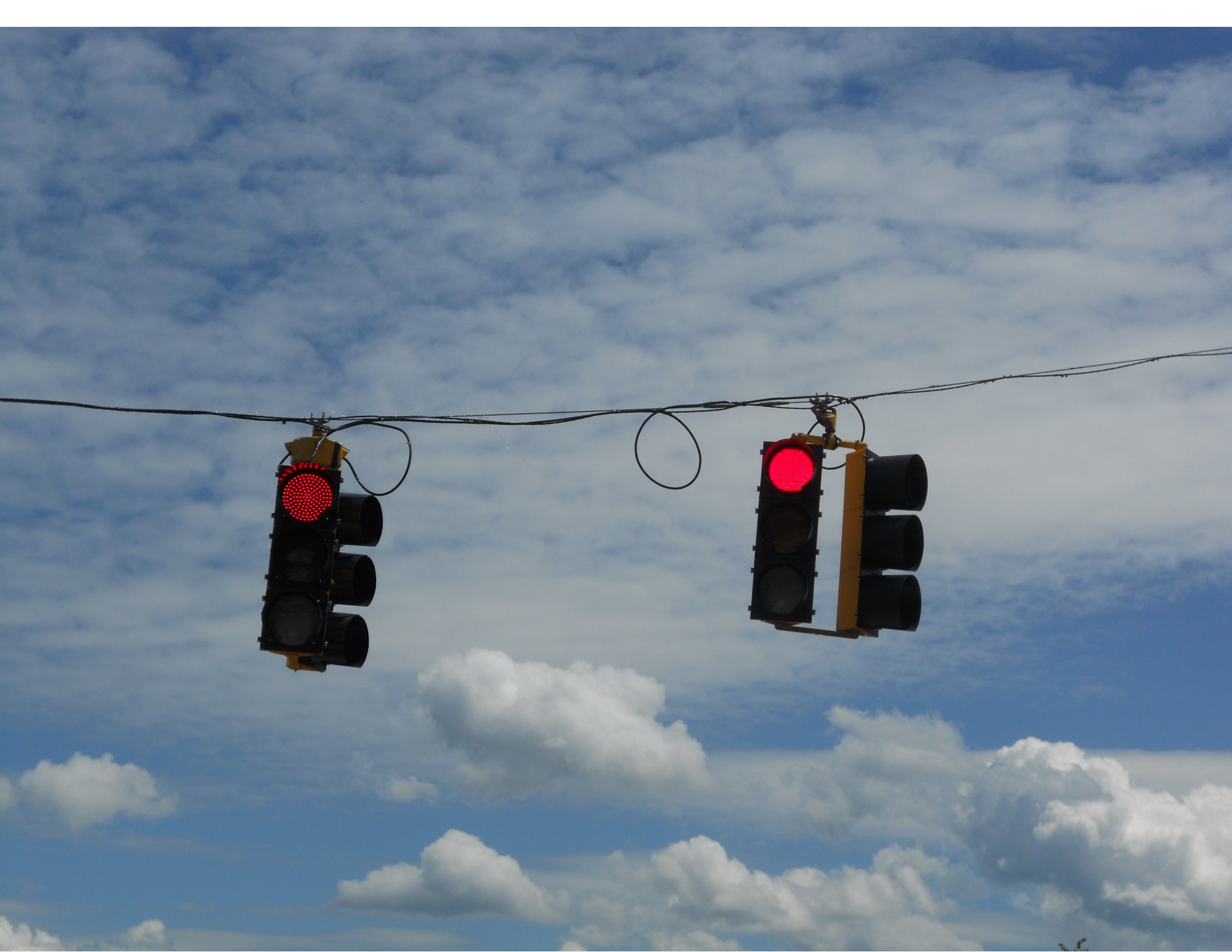


MILBANK MFG. CO.  
RANGER CITY PA  
ELECTRIC SUPPLY  
TO RESET BREAKER  
PUSH DOWN  
READY TO  
RE-POSITION  
BUTTERFLY  
FOR REPOSITION

HAZARD OF ELECTRICAL  
SHOCK OR BURN  
SERVICE BY QUALITY  
AUTHORIZED PERSONNEL ONLY  
RECYCLE PARTS FROM THE REVERSE SIDE LABEL  
MILBANK MFG. CO. - HAZARD SYMBOLS AT THE BOTTOM









STOP  
HERE ON  
RED  
←

EST  
MONT  
7  
←

EAST  
2  
↑

JCT  
INTERSTATE  
89  
↑











ROAD  
WORK  
500 FT

STOP  
HERE ON  
RED



ST  
HER  
R  
▲

2















NIC Program Steps

-----

Step	Program	Step Begins	Pattern	Override
------	---------	-------------	---------	----------

TOD Program Steps

Step 1 Program 1 Step Begins 0600

Flash. . . . . Dimming Enable. . . . .
Red Rest . . . . . Alt Veh Extension . . . . .
Spare 5. . . . . Det Log Enable. . . . .
Spare 3. . . . . Spare 4 . . . . .
Type 0 Dly Enable. . . Spare 2 . . . . .
Det Diag Plan. . . . 0

Table with 12 columns for Phase Number (1-12) and rows for Max 2 Enable, Max 3 Enable, Veh Recall, Veh Max Recall, Ped Recall, Cond Service Inhibit, Phase Omit, and Special Function.

Alt Sequence . . . . . A B C D E F

Step 2 Program 1 Step Begins 0900

Flash. . . . . Dimming Enable. . . . .
Red Rest . . . . . Alt Veh Extension . . . . .
Spare 5. . . . . Det Log Enable. . . . .
Spare 3. . . . . Spare 4 . . . . .
Type 0 Dly Enable. . . Spare 2 . . . . .
Det Diag Plan. . . . 0

Table with 12 columns for Phase Number (1-12) and rows for Max 2 Enable, Max 3 Enable, Veh Recall, Veh Max Recall, Ped Recall, Cond Service Inhibit, Phase Omit, and Special Function.

Alt Sequence . . . . . A B C D E F

TOD Program Steps

Step 3 Program 1 Step Begins 1530

Flash. . . . . Dimming Enable. . . . .
Red Rest . . . . . Alt Veh Extension . . . . .
Spare 5. . . . . Det Log Enable. . . . .
Spare 3. . . . . Spare 4 . . . . .
Type 0 Dly Enable. . . Spare 2 . . . . .
Det Diag Plan. . . . 0

Table with 12 columns (Phase Number 1-12) and rows for Max 2 Enable, Max 3 Enable, Veh Recall, Veh Max Recall, Ped Recall, Cond Service Inhibit, Phase Omit, and Special Function.

Alt Sequence . . . . . A B C D E F

Step 4 Program 1 Step Begins 1800

Flash. . . . . Dimming Enable. . . . .
Red Rest . . . . . Alt Veh Extension . . . . .
Spare 5. . . . . Det Log Enable. . . . .
Spare 3. . . . . Spare 4 . . . . .
Type 0 Dly Enable. . . Spare 2 . . . . .
Det Diag Plan. . . . 0

Table with 12 columns (Phase Number 1-12) and rows for Max 2 Enable, Max 3 Enable, Veh Recall, Veh Max Recall, Ped Recall, Cond Service Inhibit, Phase Omit, and Special Function.

Alt Sequence . . . . . A B C D E F

TOD Program Steps

Step 5 Program 1 Step Begins 2200

Flash. . . . . X Dimming Enable. . . . .
Red Rest . . . . . Alt Veh Extension . . . . .
Spare 5. . . . . Det Log Enable. . . . .
Spare 3. . . . . Spare 4 . . . . .
Type 0 Dly Enable. . . Spare 2 . . . . .
Det Diag Plan. . . . 0

Phase Number
1 2 3 4 5 6 7 8 9 10 11 12
Max 2 Enable . . . . .
Max 3 Enable . . . . .
Veh Recall . . . . .
Veh Max Recall . . . . .
Ped Recall . . . . .
Cond Service Inhibit. . . . .
Phase Omit . . . . .
Special Function . . . . .

Alt Sequence . . . . . A B C D E F

Step 6 Program 1 Step Begins 0000

Flash. . . . . X Dimming Enable. . . . .
Red Rest . . . . . Alt Veh Extension . . . . .
Spare 5. . . . . Det Log Enable. . . . .
Spare 3. . . . . Spare 4 . . . . .
Type 0 Dly Enable. . . Spare 2 . . . . .
Det Diag Plan. . . . 0

Phase Number
1 2 3 4 5 6 7 8 9 10 11 12
Max 2 Enable . . . . .
Max 3 Enable . . . . .
Veh Recall . . . . .
Veh Max Recall . . . . .
Ped Recall . . . . .
Cond Service Inhibit. . . . .
Phase Omit . . . . .
Special Function . . . . .

Alt Sequence . . . . . A B C D E F