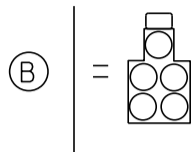


MS # 578



US 2 EAST

- PEDESTAL POST
- PEDESTRIAN SIGNAL
- PREEMPTION DETECTOR
- PREEMPTION STROBE
- CONTROL BOX
- MAST ARM
- LOOP DETECTION
- JUNCTION BOX
- LUMINAIRE
- STANCHION

SIMONS



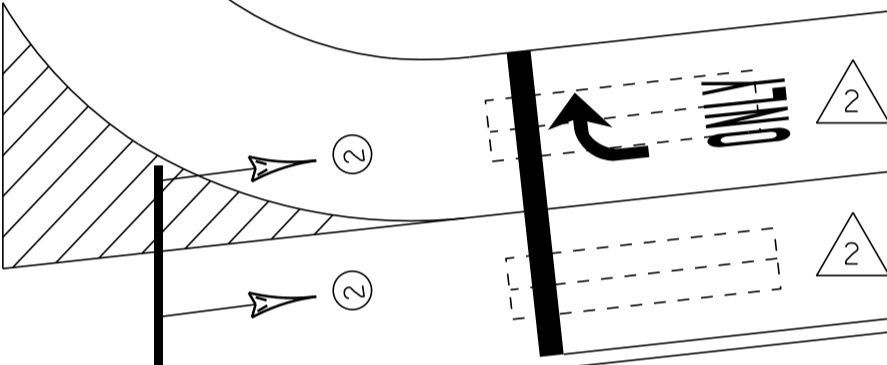
JB



ONLY



JB



MAPLE TREE PLACE



JB



JB



JB



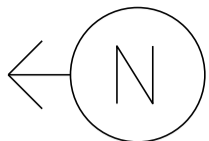
ONLY



US 2 WEST

NOT TO SCALE

MS # 578



US 2 EAST

11' 11' 11'

LANE LINE 205'

ONLY



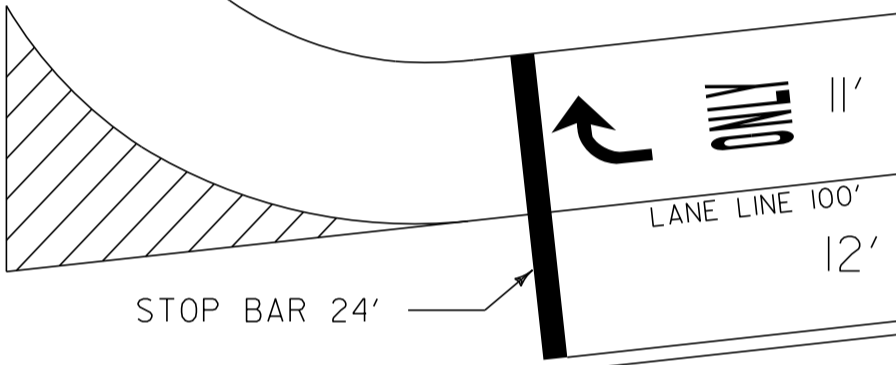
STOP BAR 24'

SIMONS

12'

12'

STOP BAR 18'



11'

LANE LINE 100'

12'

STOP BAR 24'

12'

MAPLE TREE PLACE

STOP BAR 22'



ONLY

LANE LINE 100'

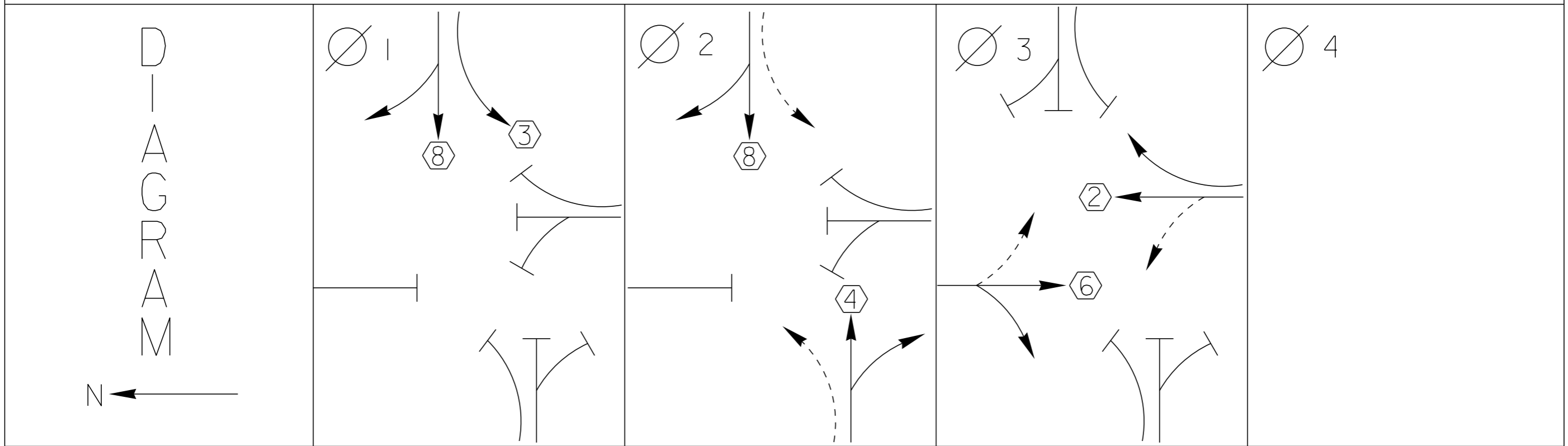
US 2 WEST

12'

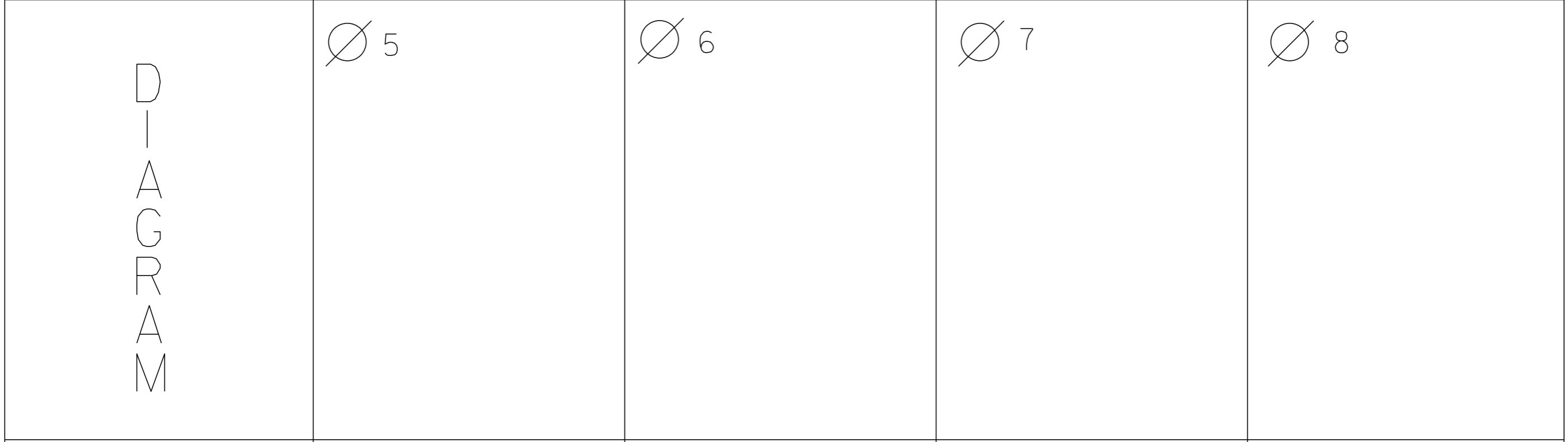
11'

11'

NOT TO SCALE



TIMING	G = Y =	G = Y =	G = Y =	G = Y =
--------	------------	------------	------------	------------



TIMING	G = Y =	G = Y =	G = Y =	G = Y =
--------	------------	------------	------------	------------

PROTECTED TURNS	PERMITTED TURNS PEDESTRIAN	CYCLE LENGTH, C = _____ S
--------------------	----------------------------------	---------------------------



PROPERTY OF  
VT AGENCY OF TRANSPORTATION  
MAINTENANCE DIV.  
10 BARKSDALE AVE.  
ST. ALBANS, VT 05478

PROPERTY OF  
VT. AGENCY OF TRANS.  
MAINTENANCE DIV.

IN EMERGENCY CALL:  
DIST. TRANS. OFFICE

NIGHT & WEEKENDS:

INTERSECTION NO.

[REDACTED]

[REDACTED]

[REDACTED]

LACE

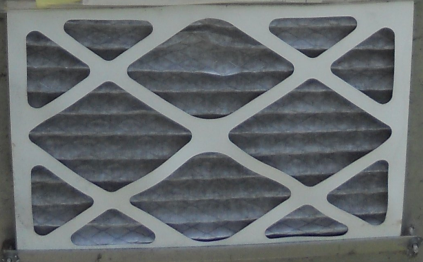
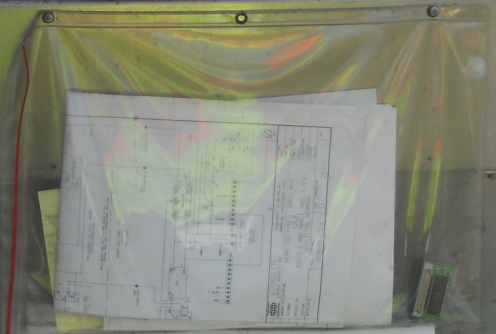
**WARNING**  
DO NOT OPERATE  
CABINET WITHOUT  
CMU / MMU

**DANGER**  
115 VOLTS A.C.

TURN ON  
STOP

CONTROLLER ON OFF	SIGNALS AUTO FLASH
MAIN ON OFF	STOP TIME AUTO OFF ON

LEDCONDUITE



FREE PLACE

TURN ON

11101

**WARNING**

DO NOT OPERATE  
CABINET WITHOUT  
CMU / MMU

**DANGER**

115 VOLTS A.C.

**BUS INTERFACE UNIT**

- POWER ON (Red LED)
- TRANSMIT (Green LED)
- VALID DATA (Red LED)

PORT 1

LM 622t LM 62t LM 62t LM 62t

ECONOLITE ECONOLITE ECONOLITE ECONOLITE

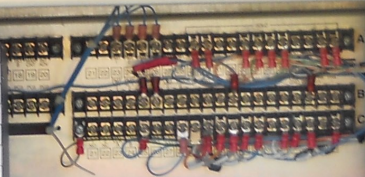
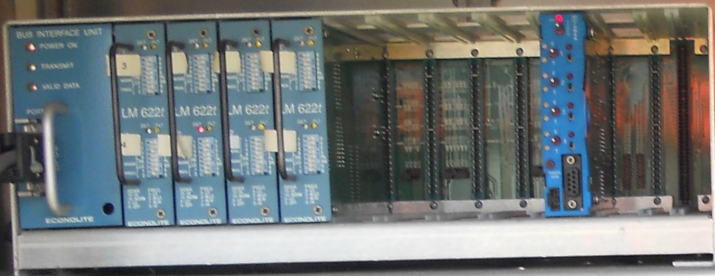
Each module has a 16-pin connector with labels: 1, 2, 3, 4, 5, 6, 7, 8, 9, 10, 11, 12, 13, 14, 15, 16. The connector is labeled with MODE, PR LG, and FREQ. Below the connector are status LEDs: DET (red), FLT (yellow), and SENS (green).

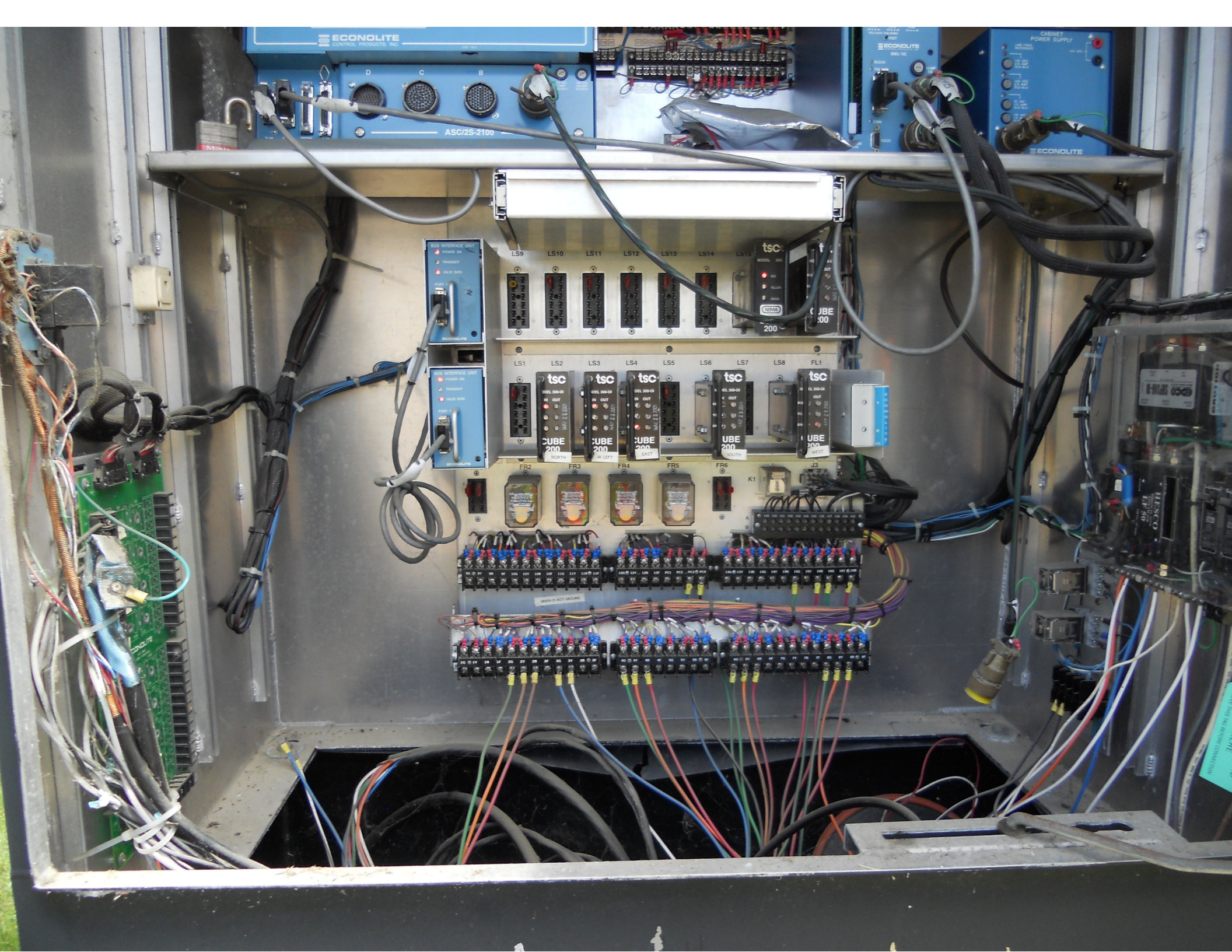
Internal components of the rack:

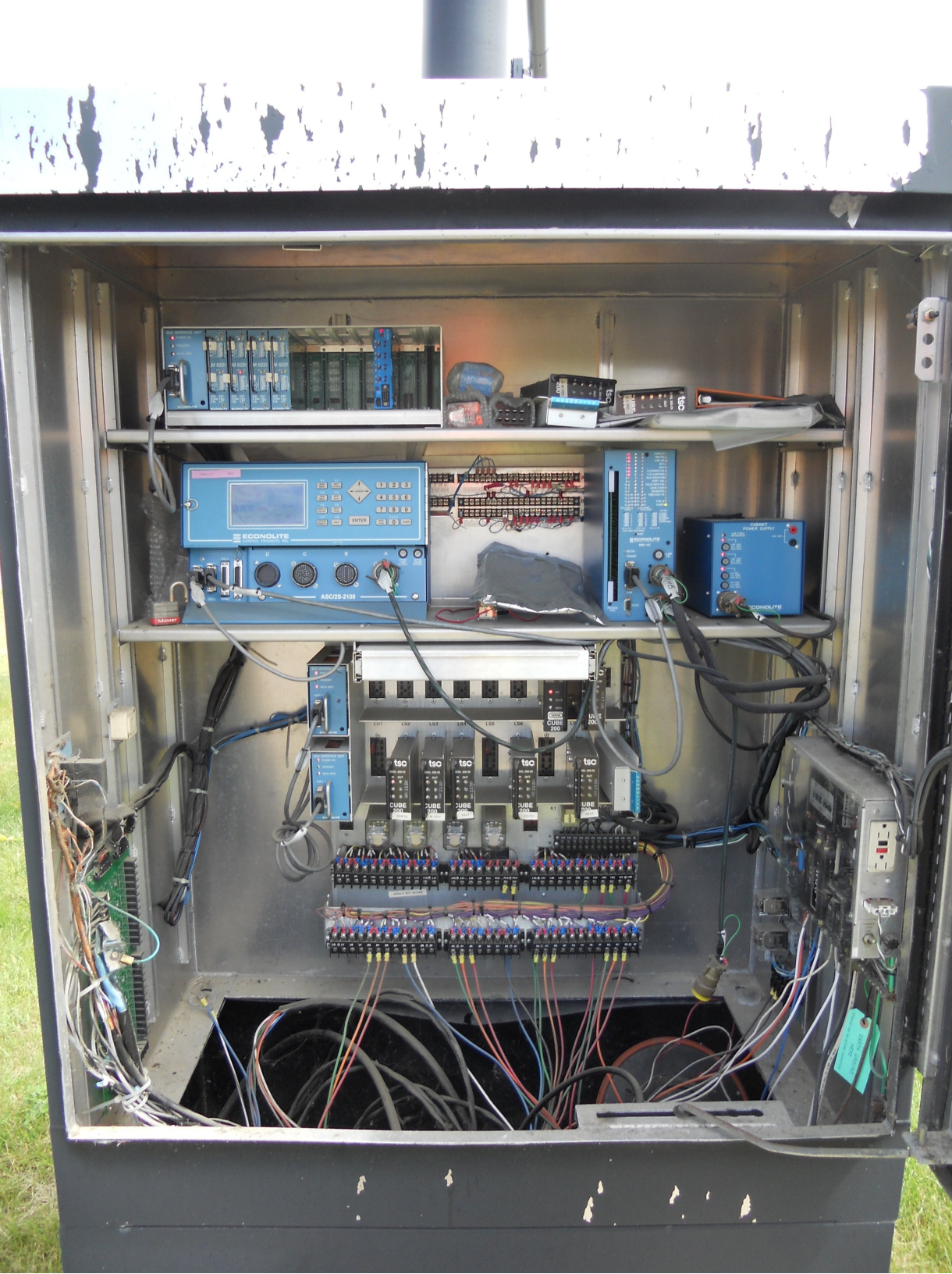
- Vertical PCBs with components and connectors.
- Horizontal PCBs in the lower section.
- Labels on the PCBs: "TOMAS & ELECTRONICS", "STANDARD SERIAL Z8000 SERIAL PROCESSOR".

Control panel of the device:

- Buttons: F1 MAIN MENU, F2 NEXT SCREEN, F3 SUB MENU, F4 NEXT DATA, F5, F6.
- Cursor: A diamond-shaped button with arrows labeled "CURSOR".
- Keypad: A numeric keypad with buttons 1-9 and 0.
- Display: A small LCD screen showing "STATUS DISPLAY" and "PAGE 00000000".







**BUS INTERFACE UNIT**

- POWER ON
- TRANSMIT
- VALID DATA

PORT

ECONOLITE

LS9 LS10 LS11 LS12 LS13 LS14 LS15

**tsc**

MODEL 300

IN OUT

RED GREEN

**NEMA**

**CUBE 200**

MAX 2 3 2001

**BUS INTERFACE UNIT**

- POWER ON
- TRANSMIT
- VALID DATA

PORT 1

ECONOLITE

LS1 LS2 LS3 LS4 LS5 LS6 LS7 LS8 FL1

W21ACPX-2  
W21ACPX-3  
W21ACPX-4  
W21ACPX-5

2 AMP 250VAC  
FLUORESCENT LAMP  
MADE IN CHINA

9G 9Y 9R 9F 10G 10Y 10R 10F 11G 11Y 11R 11F

12G 12Y 12R 12F PC1 PC2 PC3 PC4

13G 13Y 13R 14G 14Y 14R 15G 15Y 15R 16G 16Y 16R

149 150 151 152 153 154 155 156 157 158 159 160

HAZARD OF ELECTRICAL SHOCK  
OR BURN IF COVER REMOVED  
SERVICE BY UTILITY  
AUTHORIZED PERSONNEL ONLY  
DO NOT PRINT OVER OR REMOVE THIS LABEL

**ABB**

KILOWATT HOURS

01M0126001

SINGLE-STATOR WATT/WHOUR METER  
TYPE AB1 S 5570CP0638

FORM 2S 200 CL 240 V 3 W 60 HZ TA 30 Kh 7.2

**201 879**

MADE IN U.S.A.

\*ACG011646728  
11 648 728

HAZARD OF ELECTRICAL SHOCK  
OR BURN IF COVER REMOVED  
SERVICE BY UTILITY  
AUTHORIZED PERSONNEL ONLY  
DO NOT PRINT OVER OR REMOVE THIS LABEL



MAPLE TREE PLACE





↑  
← | →  
ONLY



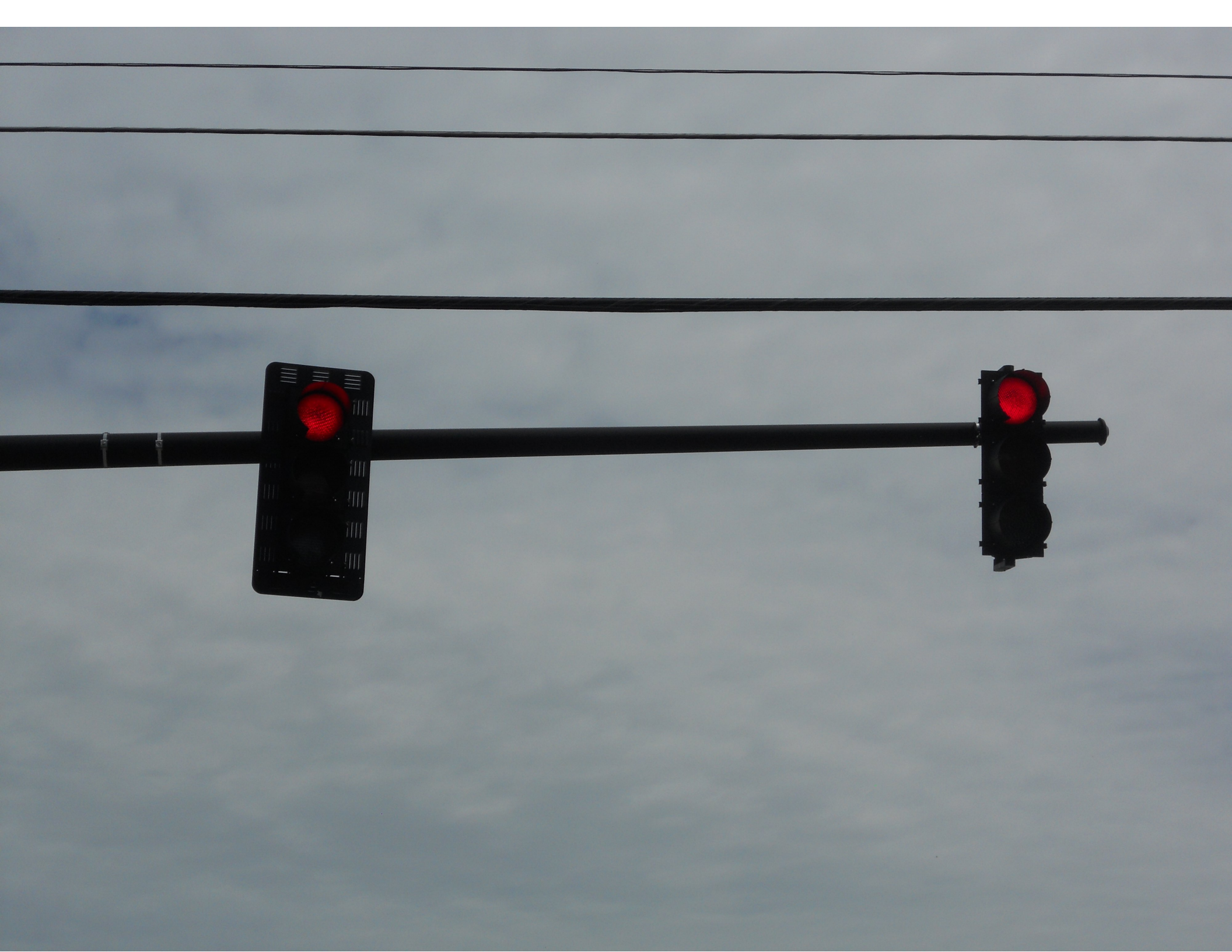


MAPLE TREE PLACE

1230

166572

TRUCK CENTER





ONLY



MAPLE  
TREE  
PLACE

MAPLE  
TREE  
PLACE

VC





MAPLE  
TREE  
PLACE

HOUSE OF PLANT

STOP



WE-15.6X32  
7E-9.61X52  
7E-9.61X32  
55KSL 20V  
OK METAL CORP.





MAPLE  
TREE  
PLACE



MAPLE  
TREE  
PLACE

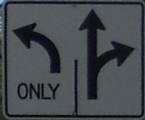














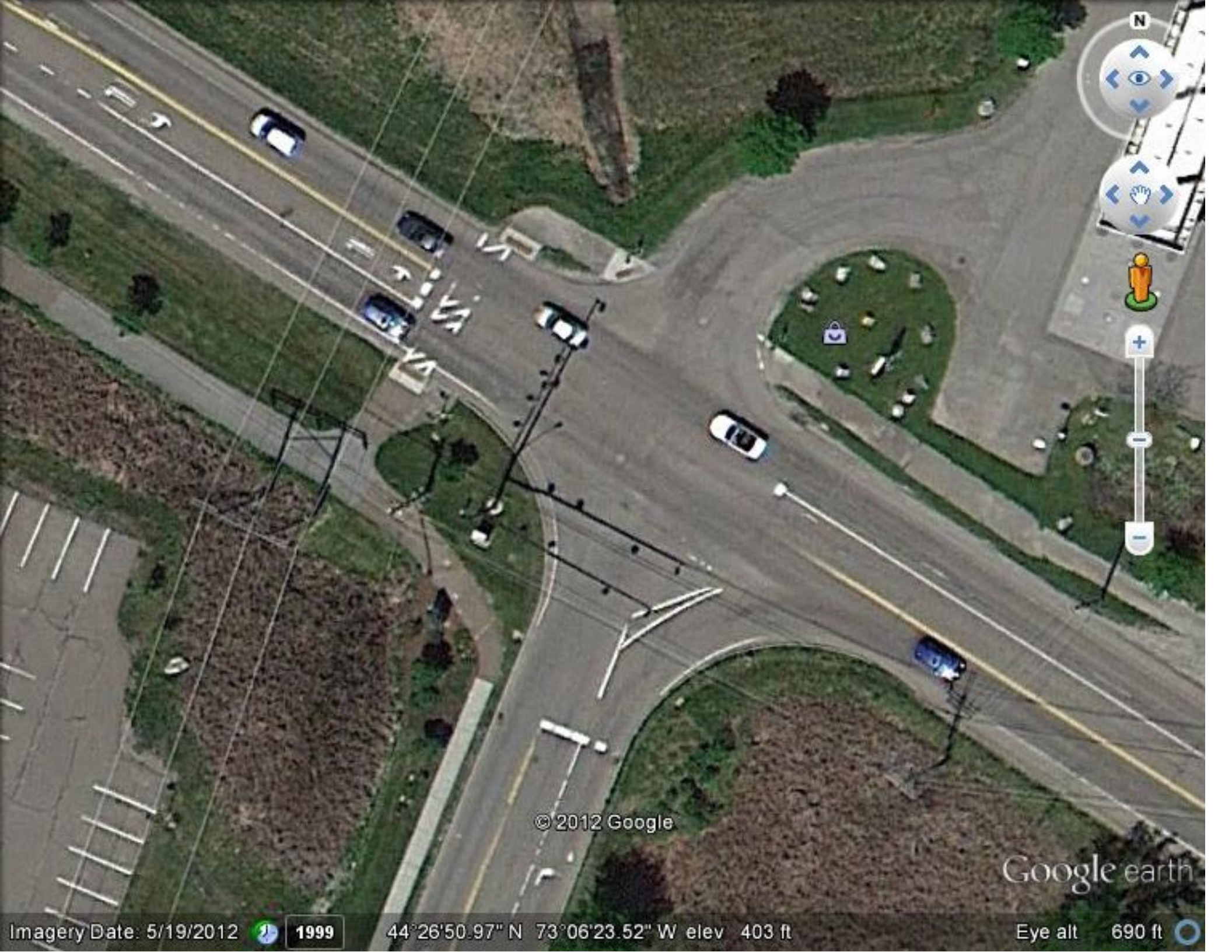














© 2012 Google

Google earth

Imagery Date: 5/19/2012  1999

44°26'50.97" N 73°06'23.52" W elev 403 ft

Eye alt 690 ft 





Coordination Patterns

```

-----
Pattern 1
Cycle Length . . . 84  COS . . . . . 111
Offset . . . . . 6
Vehicle Permissive . . [1] 0 [2] 0
Vehicle Perm 2 Displacement 0 Phase Reservice. . NO
Splits: Phase 1- 0 2- 27 3- 24 4- 33
          Phase 5- 0 6- 27 7- 0 8- 57
          Phase 9- 1 10- 0 11- 0 12- 0 Split Sum: 0
Split Extension/Ring [1] 0 [2] 0
Split Demand Pattern [1] 0 [2] 0
XRT Pattern. . . 0
  Phase Number: 1 2 3 4 5 6 7 8 9 10 11 12
Coord Phases . . . . . X . . . X . . . .
Veh Recall . . . . . . . . . . . . . .
Veh Max Recall . . . . . . . . . . . . .
Ped Recall . . . . . . . . . . . . . .
Veh Omit . . . . . . . . . . . . . .
Alt Sequence . . A: . B: . C: . D: . E: . F: .
-----
    
```

```

-----
Pattern 2
Cycle Length . . . 88  COS . . . . . 211
Offset . . . . . 77
Vehicle Permissive . . [1] 0 [2] 0
Vehicle Perm 2 Displacement 0 Phase Reservice. . NO
Splits: Phase 1- 0 2- 28 3- 21 4- 39
          Phase 5- 0 6- 28 7- 0 8- 60
          Phase 9- 1 10- 0 11- 0 12- 0 Split Sum: 0
Split Extension/Ring [1] 0 [2] 0
Split Demand Pattern [1] 0 [2] 0
XRT Pattern. . . 0
  Phase Number: 1 2 3 4 5 6 7 8 9 10 11 12
Coord Phases . . . . . X . . . X . . . .
Veh Recall . . . . . . . . . . . . . .
Veh Max Recall . . . . . . . . . . . . .
Ped Recall . . . . . . . . . . . . . .
Veh Omit . . . . . . . . . . . . . .
Alt Sequence . . A: . B: . C: . D: . E: . F: .
-----
    
```

```

-----
Pattern 3
Cycle Length . . . 96  COS . . . . . 311
Offset . . . . . 60
Vehicle Permissive . . [1] 0 [2] 0
Vehicle Perm 2 Displacement 0 Phase Reservice. . NO
Splits: Phase 1- 0 2- 31 3- 17 4- 48
          Phase 5- 0 6- 31 7- 0 8- 65
          Phase 9- 1 10- 0 11- 0 12- 0 Split Sum: 0
Split Extension/Ring [1] 0 [2] 0
Split Demand Pattern [1] 0 [2] 0
XRT Pattern. . . 0
  Phase Number: 1 2 3 4 5 6 7 8 9 10 11 12
Coord Phases . . . . . X . . . X . . . .
Veh Recall . . . . . . . . . . . . . .
Veh Max Recall . . . . . . . . . . . . .
Ped Recall . . . . . . . . . . . . . .
Veh Omit . . . . . . . . . . . . . .
Alt Sequence . . A: . B: . C: . D: . E: . F: .
-----
    
```



NIC Program Steps

-----

Step	Program	Step Begins	Pattern	Override
1	1	0600	1	NO
2	1	1000	2	NO
3	1	1430	3	NO
4	1	1900	2	NO
5	1	2200	0	NO
6	2	0600	1	NO
7	2	0900	3	NO
8	2	2200	0	NO

TOD Program Steps

-----  
 Step 1            Program 1            Step Begins    0600

Flash. . . . . Dimming Enable. . . . .  
 Red Rest . . . . . Alt Veh Extension . . . . .  
 Spare 5. . . . . Det Log Enable. . . . .  
 Spare 3. . . . . Spare 4 . . . . .  
 Type 0 Dly Enable. . . Spare 2 . . . . .  
 Det Diag Plan. . . . 0

Phase Number

	1	2	3	4	5	6	7	8	9	10	11	12
Max 2 Enable . . . . .	.	.	.	.	.	.	.	.	.	.	.	.
Max 3 Enable . . . . .	.	.	.	.	.	.	.	.	.	.	.	.
Veh Recall . . . . .	.	.	.	.	.	.	.	.	.	.	.	.
Veh Max Recall . . . . .	.	.	.	X	.	.	.	X	.	.	.	.
Ped Recall . . . . .	.	.	.	.	.	.	.	.	.	.	.	.
Cond Service Inhibit. . . . .	.	.	.	.	.	.	.	.	.	.	.	.
Phase Omit . . . . .	.	.	.	.	.	.	.	.	.	.	.	.
Special Function . . . . .	.	.	.	.	.	.	.	.	.	.	.	.

Alt Sequence . . . . . A B C D E F

-----  
 Step 2            Program 1            Step Begins    1000

Flash. . . . . Dimming Enable. . . . .  
 Red Rest . . . . . Alt Veh Extension . . . . .  
 Spare 5. . . . . Det Log Enable. . . . .  
 Spare 3. . . . . Spare 4 . . . . .  
 Type 0 Dly Enable. . . Spare 2 . . . . .  
 Det Diag Plan. . . . 0

Phase Number

	1	2	3	4	5	6	7	8	9	10	11	12
Max 2 Enable . . . . .	X	X	X	X	X	X	X	X	.	.	.	.
Max 3 Enable . . . . .	.	.	.	.	.	.	.	.	.	.	.	.
Veh Recall . . . . .	.	.	.	.	.	.	.	.	.	.	.	.
Veh Max Recall . . . . .	.	.	.	X	.	.	.	X	.	.	.	.
Ped Recall . . . . .	.	.	.	.	.	.	.	.	.	.	.	.
Cond Service Inhibit. . . . .	.	.	.	.	.	.	.	.	.	.	.	.
Phase Omit . . . . .	.	.	.	.	.	.	.	.	.	.	.	.
Special Function . . . . .	.	.	.	.	.	.	.	.	.	.	.	.

Alt Sequence . . . . . A B C D E F

-----

TOD Program Steps

-----  
 Step 3            Program 1            Step Begins    1430

Flash. . . . . Dimming Enable. . . . .  
 Red Rest . . . . . Alt Veh Extension . . . . .  
 Spare 5. . . . . Det Log Enable. . . . .  
 Spare 3. . . . . Spare 4 . . . . .  
 Type 0 Dly Enable. . . Spare 2 . . . . .  
 Det Diag Plan. . . . 0

Phase Number

	1	2	3	4	5	6	7	8	9	10	11	12
Max 2 Enable . . . . .	.	.	.	.	.	.	.	.	.	.	.	.
Max 3 Enable . . . . .	X	X	X	X	X	X	X	X	.	.	.	.
Veh Recall . . . . .	.	.	.	.	.	.	.	.	.	.	.	.
Veh Max Recall . . . . .	.	.	.	X	.	.	.	X	.	.	.	.
Ped Recall . . . . .	.	.	.	.	.	.	.	.	.	.	.	.
Cond Service Inhibit. . . . .	.	.	.	.	.	.	.	.	.	.	.	.
Phase Omit . . . . .	.	.	.	.	.	.	.	.	.	.	.	.
Special Function . . . . .	.	.	.	.	.	.	.	.	.	.	.	.

Alt Sequence . . . . . A    B    C    D    E    F  
 -----

Step 4            Program 1            Step Begins    1900

Flash. . . . . Dimming Enable. . . . .  
 Red Rest . . . . . Alt Veh Extension . . . . .  
 Spare 5. . . . . Det Log Enable. . . . .  
 Spare 3. . . . . Spare 4 . . . . .  
 Type 0 Dly Enable. . . Spare 2 . . . . .  
 Det Diag Plan. . . . 0

Phase Number

	1	2	3	4	5	6	7	8	9	10	11	12
Max 2 Enable . . . . .	X	X	X	X	X	X	X	X	.	.	.	.
Max 3 Enable . . . . .	.	.	.	.	.	.	.	.	.	.	.	.
Veh Recall . . . . .	.	.	.	.	.	.	.	.	.	.	.	.
Veh Max Recall . . . . .	.	.	.	X	.	.	.	X	.	.	.	.
Ped Recall . . . . .	.	.	.	.	.	.	.	.	.	.	.	.
Cond Service Inhibit. . . . .	.	.	.	.	.	.	.	.	.	.	.	.
Phase Omit . . . . .	.	.	.	.	.	.	.	.	.	.	.	.
Special Function . . . . .	.	.	.	.	.	.	.	.	.	.	.	.

Alt Sequence . . . . . A    B    C    D    E    F  
 -----

TOD Program Steps

-----

Step 5            Program 1            Step Begins    2200

Flash. . . . . Dimming Enable. . . . .  
 Red Rest . . . . . Alt Veh Extension . . . . .  
 Spare 5. . . . . Det Log Enable. . . . .  
 Spare 3. . . . . Spare 4 . . . . .  
 Type 0 Dly Enable. . . Spare 2 . . . . .  
 Det Diag Plan. . . . 0

Phase Number

	1	2	3	4	5	6	7	8	9	10	11	12
Max 2 Enable . . . . .	.	.	.	.	.	.	.	.	.	.	.	.
Max 3 Enable . . . . .	.	.	.	.	.	.	.	.	.	.	.	.
Veh Recall . . . . .	.	.	.	X	.	.	.	X	.	.	.	.
Veh Max Recall . . . . .	.	.	.	.	.	.	.	.	.	.	.	.
Ped Recall . . . . .	.	.	.	.	.	.	.	.	.	.	.	.
Cond Service Inhibit. . . . .	.	.	.	.	.	.	.	.	.	.	.	.
Phase Omit . . . . .	.	.	.	.	.	.	.	.	.	.	.	.
Special Function . . . . .	.	.	.	.	.	.	.	.	.	.	.	.

A    B    C    D    E    F

Alt Sequence . . . . .

-----

Step 6            Program 2            Step Begins    0600

Flash. . . . . Dimming Enable. . . . .  
 Red Rest . . . . . Alt Veh Extension . . . . .  
 Spare 5. . . . . Det Log Enable. . . . .  
 Spare 3. . . . . Spare 4 . . . . .  
 Type 0 Dly Enable. . . Spare 2 . . . . .  
 Det Diag Plan. . . . 0

Phase Number

	1	2	3	4	5	6	7	8	9	10	11	12
Max 2 Enable . . . . .	.	.	.	.	.	.	.	.	.	.	.	.
Max 3 Enable . . . . .	.	.	.	.	.	.	.	.	.	.	.	.
Veh Recall . . . . .	.	.	.	.	.	.	.	.	.	.	.	.
Veh Max Recall . . . . .	.	.	.	X	.	.	.	X	.	.	.	.
Ped Recall . . . . .	.	.	.	.	.	.	.	.	.	.	.	.
Cond Service Inhibit. . . . .	.	.	.	.	.	.	.	.	.	.	.	.
Phase Omit . . . . .	.	.	.	.	.	.	.	.	.	.	.	.
Special Function . . . . .	.	.	.	.	.	.	.	.	.	.	.	.

A    B    C    D    E    F

Alt Sequence . . . . .

-----

TOD Program Steps

-----  
 Step 7            Program 2            Step Begins    0900

Flash. . . . . Dimming Enable. . . . .  
 Red Rest . . . . . Alt Veh Extension . . . . .  
 Spare 5. . . . . Det Log Enable. . . . .  
 Spare 3. . . . . Spare 4 . . . . .  
 Type 0 Dly Enable. . . Spare 2 . . . . .  
 Det Diag Plan. . . . 0

Phase Number

	1	2	3	4	5	6	7	8	9	10	11	12
Max 2 Enable . . . . .	.	.	.	.	.	.	.	.	.	.	.	.
Max 3 Enable . . . . .	X	X	X	X	X	X	X	X	.	.	.	.
Veh Recall . . . . .	.	.	.	.	.	.	.	.	.	.	.	.
Veh Max Recall . . . . .	.	.	.	X	.	.	.	X	.	.	.	.
Ped Recall . . . . .	.	.	.	.	.	.	.	.	.	.	.	.
Cond Service Inhibit. . . . .	.	.	.	.	.	.	.	.	.	.	.	.
Phase Omit . . . . .	.	.	.	.	.	.	.	.	.	.	.	.
Special Function . . . . .	.	.	.	.	.	.	.	.	.	.	.	.

Alt Sequence . . . . . A    B    C    D    E    F  
 . . . . . .    .    .    .    .    .

-----  
 Step 8            Program 2            Step Begins    2200

Flash. . . . . Dimming Enable. . . . .  
 Red Rest . . . . . Alt Veh Extension . . . . .  
 Spare 5. . . . . Det Log Enable. . . . .  
 Spare 3. . . . . Spare 4 . . . . .  
 Type 0 Dly Enable. . . Spare 2 . . . . .  
 Det Diag Plan. . . . 0

Phase Number

	1	2	3	4	5	6	7	8	9	10	11	12
Max 2 Enable . . . . .	.	.	.	.	.	.	.	.	.	.	.	.
Max 3 Enable . . . . .	.	.	.	.	.	.	.	.	.	.	.	.
Veh Recall . . . . .	.	.	.	X	.	.	.	X	.	.	.	.
Veh Max Recall . . . . .	.	.	.	.	.	.	.	.	.	.	.	.
Ped Recall . . . . .	.	.	.	.	.	.	.	.	.	.	.	.
Cond Service Inhibit. . . . .	.	.	.	.	.	.	.	.	.	.	.	.
Phase Omit . . . . .	.	.	.	.	.	.	.	.	.	.	.	.
Special Function . . . . .	.	.	.	.	.	.	.	.	.	.	.	.

Alt Sequence . . . . . A    B    C    D    E    F  
 . . . . . .    .    .    .    .    .