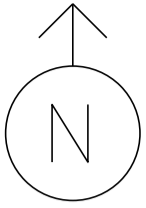


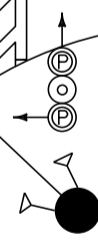
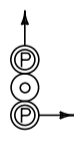
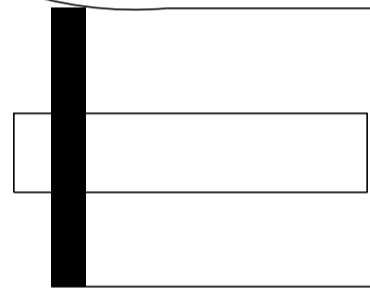
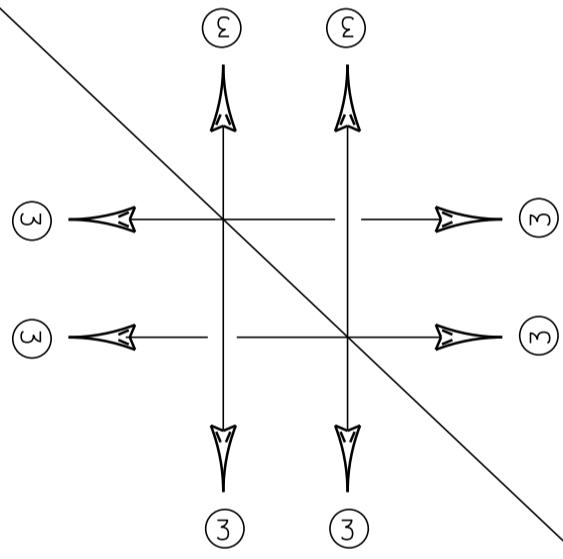
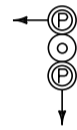
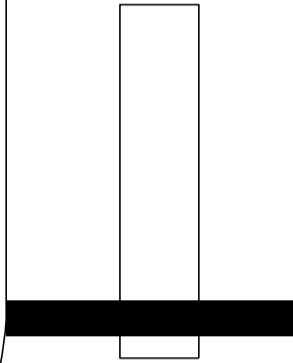
MS # 576



JERICO RD

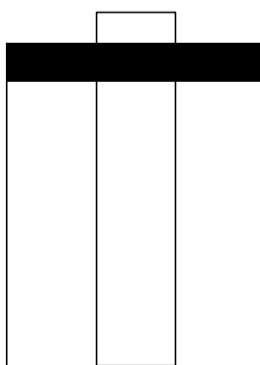
- PEDESTAL POST
- PEDESTRIAN SIGNAL
- VIDEO CAMERA
- CONTROL BOX
- VIDEO DETECTION

US 2 WEST



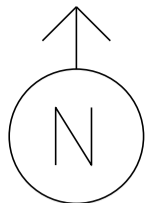
US 2 EAST

BRIDGE ST



NOT TO SCALE

MS # 576



JERICO RD

15'

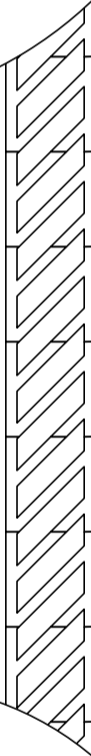
US 2 WEST



STOP BAR 15'



CROSSWALK 38'



CROSSWALK 43'



CROSSWALK 38'



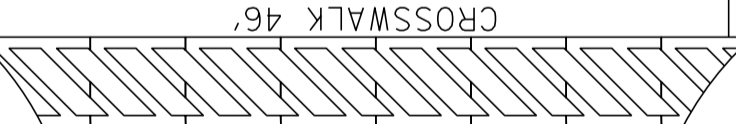
STOP BAR 12'

12'

STOP BAR 16'



13'



CROSSWALK 46'

US 2 EAST

STOP BAR 13'

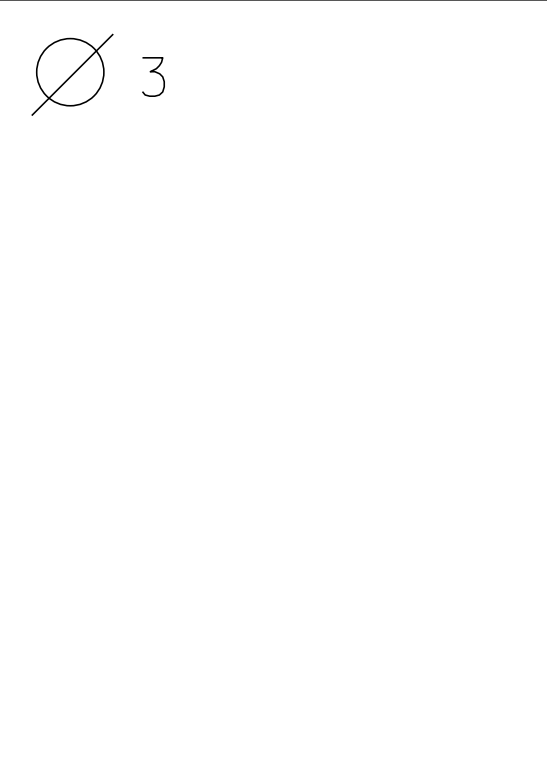
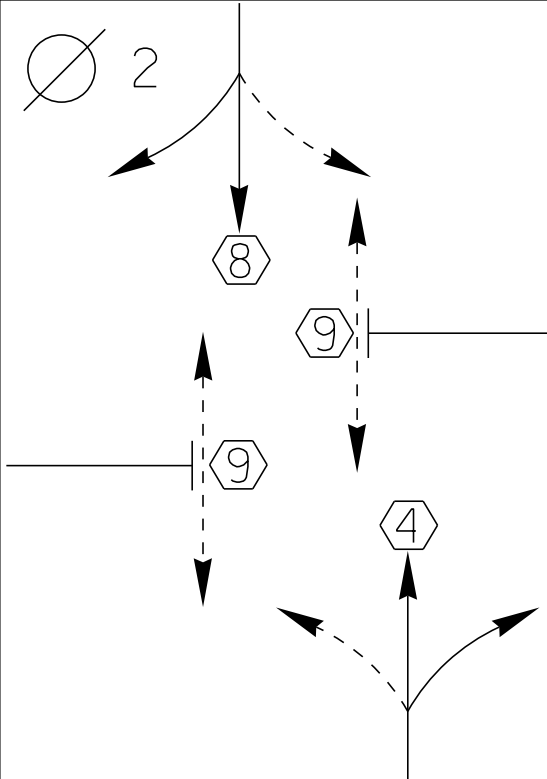
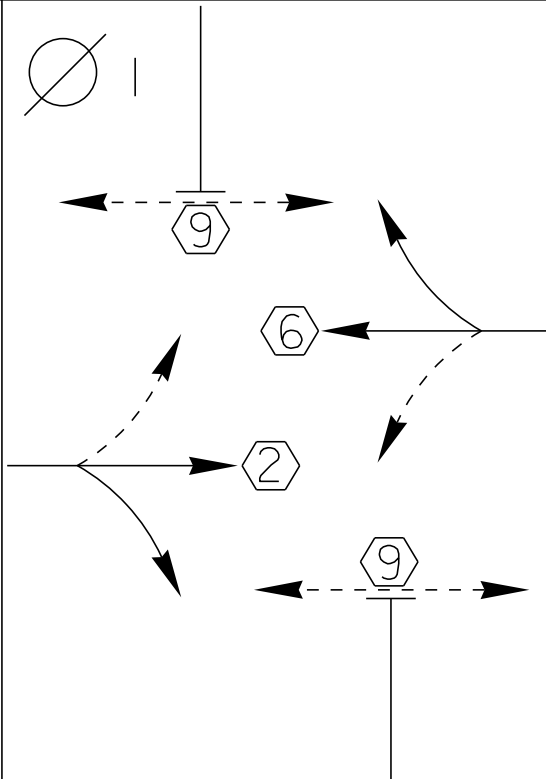


13'

BRIDGE ST

NOT TO SCALE

D
I
A
G
R
A
M



T
I
M
I
N
G

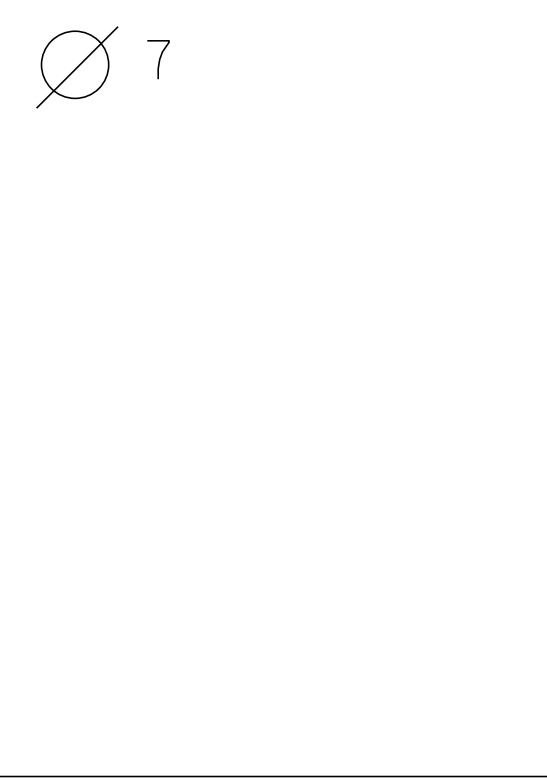
G =
Y =

G =
Y =

G =
Y =

G =
Y =

D
I
A
G
R
A
M



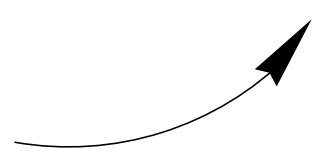
T
I
M
I
N
G

G =
Y =

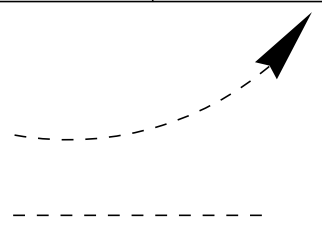
G =
Y =

G =
Y =

G =
Y =



PROTECTED
TURNS



PERMITTED
TURNS
PEDESTRIAN

CYCLE LENGTH, C= _____ S

 **ECONOLITE**

PROPERTY OF:
VT. AGENCY OF TRANS.
MAINTENANCE DIV.
IN EMERGENCY CALL:
DIST. TRANS. OFFICE
[REDACTED]
NIGHTS & WEEKENDS [REDACTED]
INTERSECTION NO. [REDACTED]

1X1

PROPERTY OF:
VT. AGENCY OF TRANS.
MAINTENANCE DIV.

IN EMERGENCY CALL:
DIST. TRANS. OFFICE

655 7580

NIGHTS & WEEKENDS: 578 7111

INTERSECTION NO. MS 578

WARNING

DO NOT OPERATE
CABINET WITHOUT
CONFLICT MONITOR UNIT

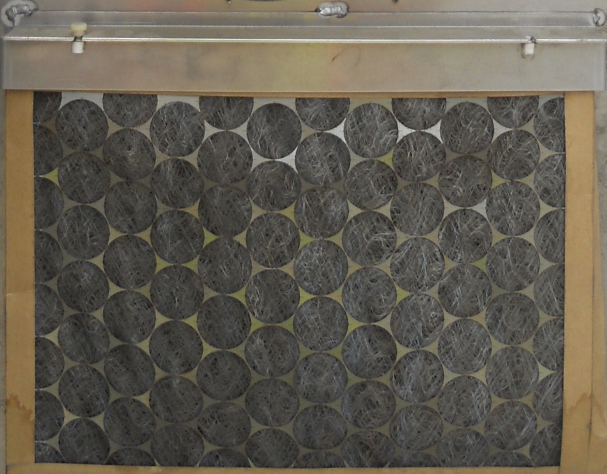
DANGER

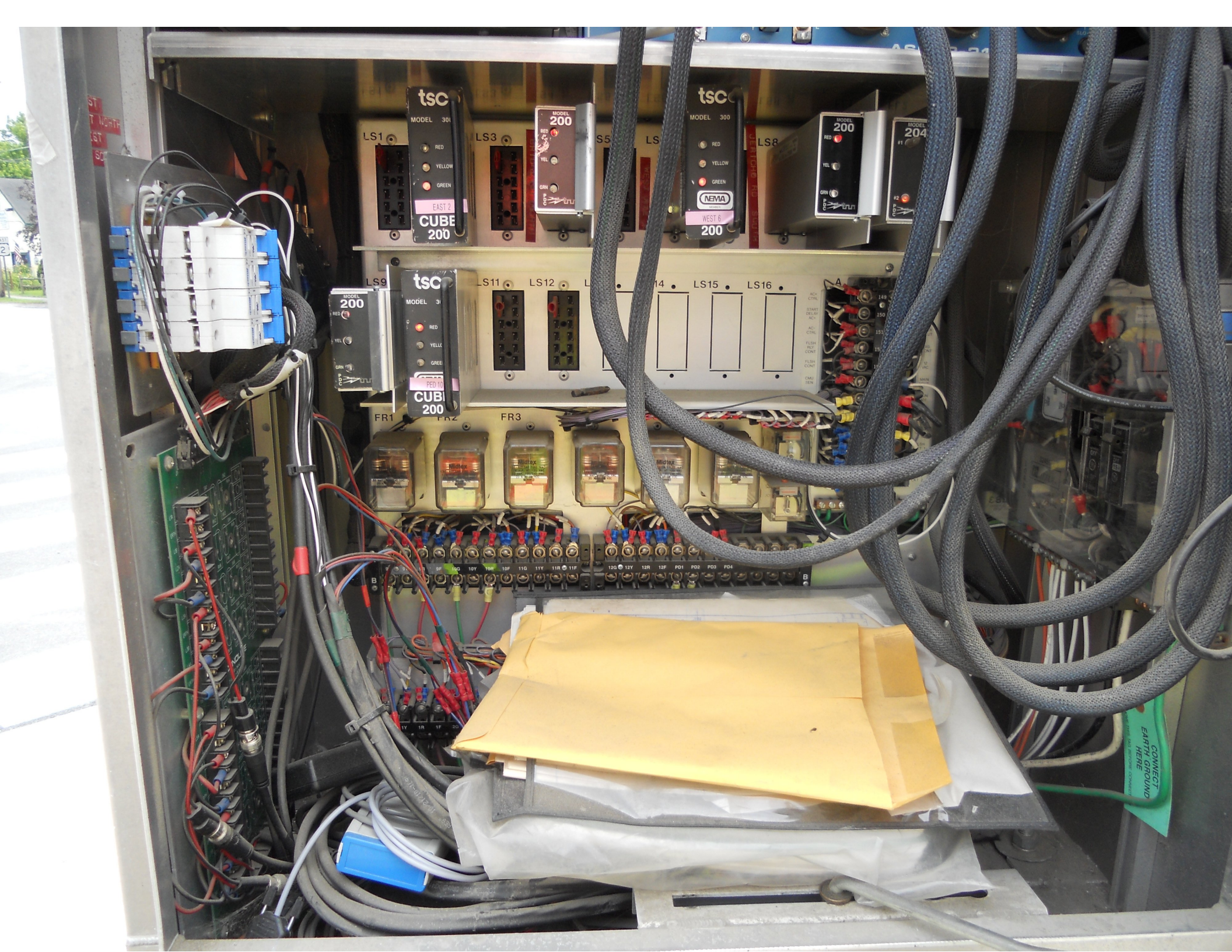
115 VOLTS A.C.



TURNED
ON
10-17-97

1 gm ϕ 2
2 gm ϕ 6
1 RED ϕ 4
2 RED ϕ 8





tsc
MODEL 300
RED
YELLOW
GREEN
EAST 2
CUBE 200

tsc
MODEL 300
RED
YELLOW
GREEN
WEST 6
200

MODEL 200
RED
YELLOW
GREEN

MODEL 200
RED
YELLOW
GREEN

MODEL 204
RED
YELLOW
GREEN

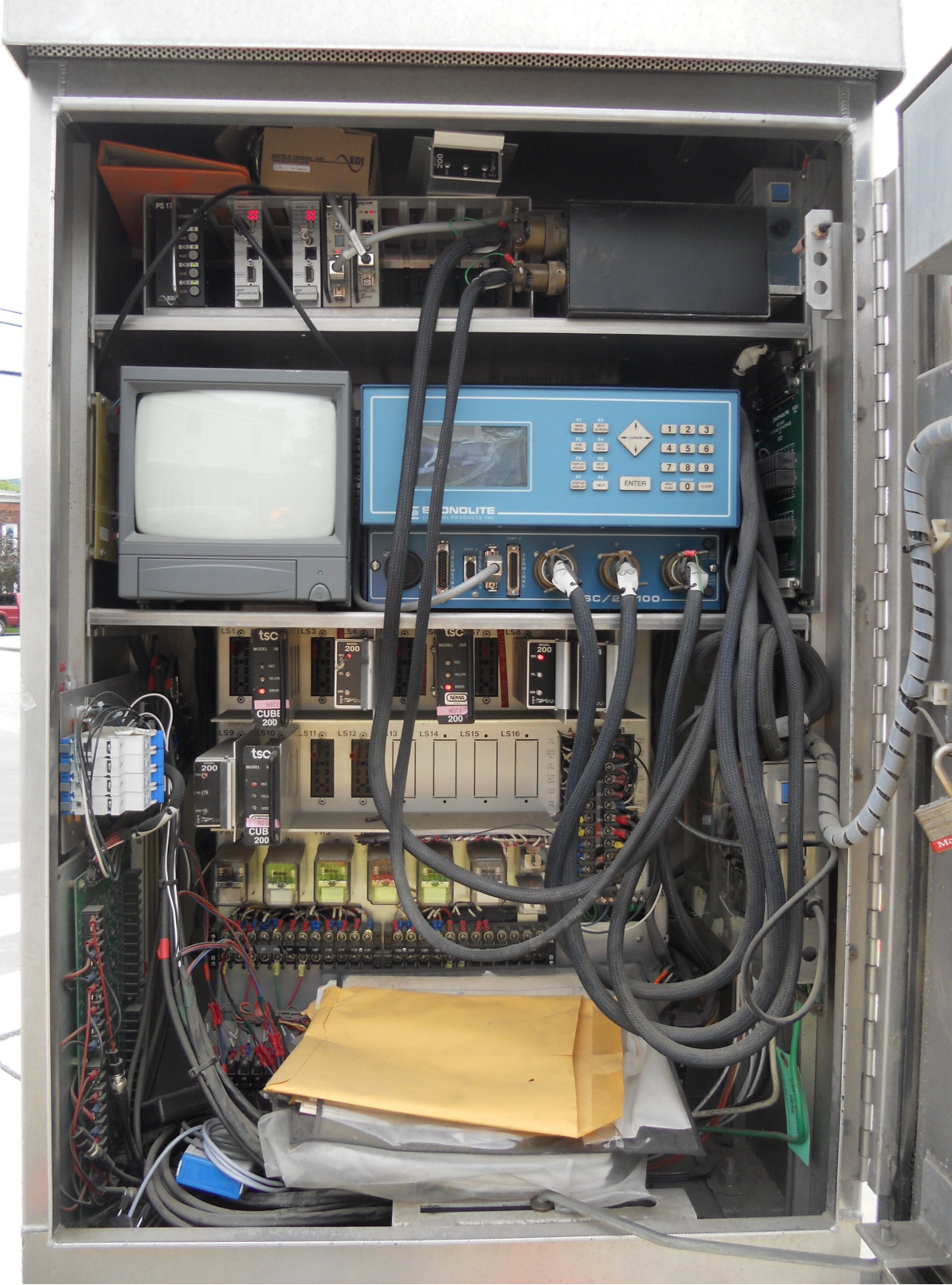
MODEL 200
RED
YELLOW
GREEN

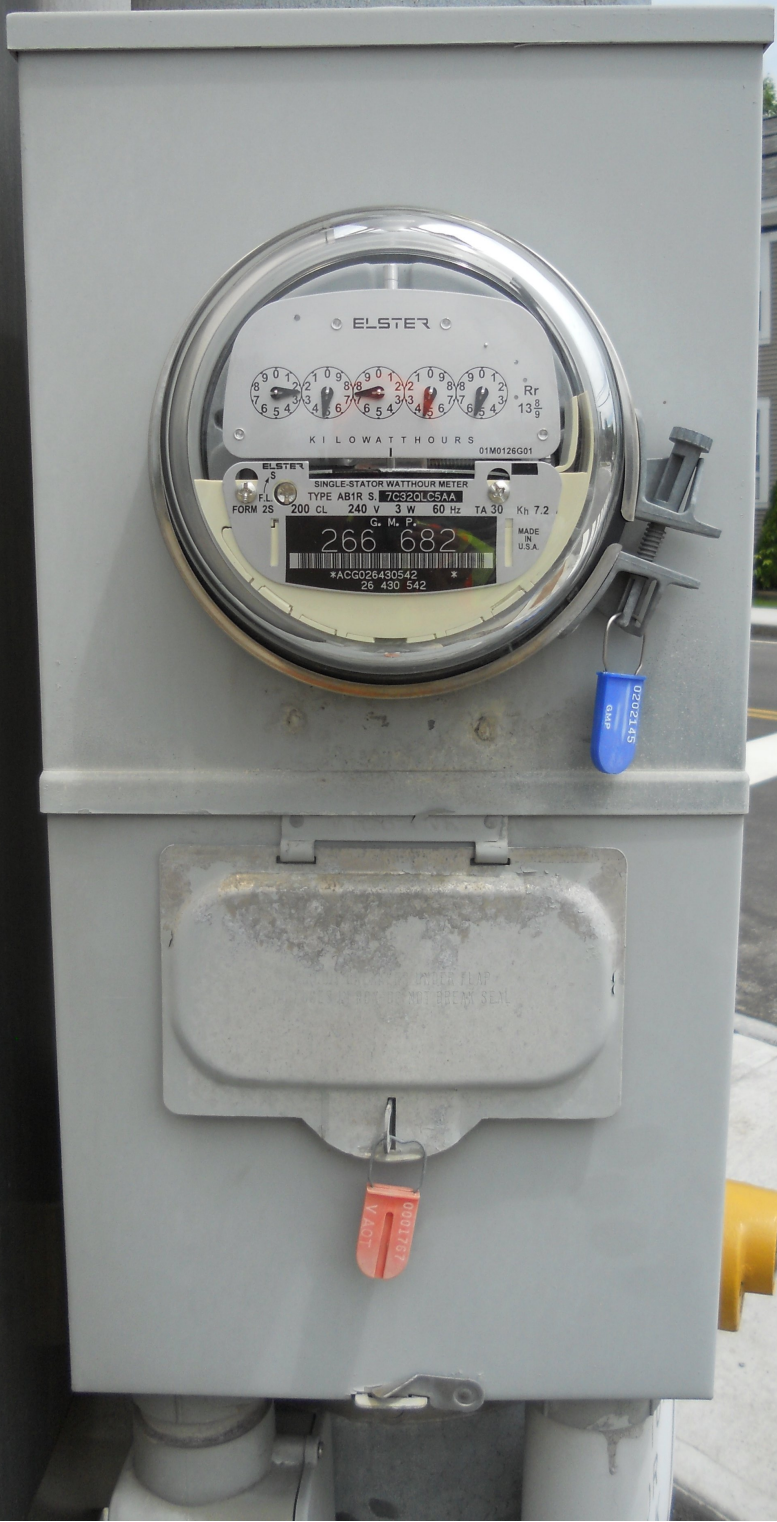
tsc
MODEL 300
RED
YELLOW
GREEN
PED TO
CUBE 200

FR1

FR3

CONNECT
EARTH GROUND
HERE





ELSTER



KILOWATTHOURS 01M0128G01

ELSTER
SINGLE-STATOR WATT-HOUR METER
TYPE AB1R S 76320LCSAA
FORM 2S 200 CL 240 V 3 W 60 Hz TA 30 Kh 7.2
G. M. P.
266 682
ACG026430542
26 430 542
MADE IN U.S.A.

0202145
Date



0001767
V.A.C.T.



Cumberland Farms

UNLEADED
363

BOLTON VALLEY 9
JERICHO CENTER 5
HUNTINGTON 7
HINESBURG 8
COCHRAN













Unleaded
363 9/10

PUSH
BUTTON
FOR
WALK
→
SIGNAL

WEST MAIN ST US RT 2
BRIDGE ST THOI

POLICE
POLICE

00°20
04







SNOWBOARD
LEASE 1999

ADULT SKI
LEASE 1999

JUNIOR SKI
LEASE 1999

SKI RENTAL

SKI RENTAL

1256

EAST MAIN STREET

Vermont
BKH 317
Green Mountain State

CHRYSLER
PACER

TOWN & COUNTRY













Cambridge Farms

3631

HUNTINGTON 7
HINESBURG 8
COCHRAN

WILSON













JAMESON
INSURANCE
COMPLETE
INSURANCE SERVICE
www.jameson.com

HARLEY B. D.
ATTORNEY

EAST MAIN
JERICHO RD

PUSH
BUTTON
FOR
WALK
←
SIGNAL

EAST MAIN ST US RT 2

JERICHO RD TH04

























NIC Program Steps

Step	Program	Step Begins	Pattern	Override
------	---------	-------------	---------	----------

TOD Program Steps

 Step 1 Program 1 Step Begins 0600

Flash. Dimming Enable.
 Red Rest Alt Veh Extension
 Spare 5. Det Log Enable.
 Spare 3. Spare 4
 Type 0 Dly Enable. . . Spare 2
 Det Diag Plan. . . . 0

	Phase Number											
	1	2	3	4	5	6	7	8	9	10	11	12
Max 2 Enable
Max 3 Enable
Veh Recall
Veh Max Recall
Ped Recall
Cond Service Inhibit.
Phase Omit	X
Special Function

Alt Sequence A B C D E F

Step 2 Program 1 Step Begins 0830

Flash. Dimming Enable.
 Red Rest Alt Veh Extension
 Spare 5. Det Log Enable.
 Spare 3. Spare 4
 Type 0 Dly Enable. . . Spare 2
 Det Diag Plan. . . . 0

	Phase Number											
	1	2	3	4	5	6	7	8	9	10	11	12
Max 2 Enable	X	X	X	.	X	.	X
Max 3 Enable
Veh Recall
Veh Max Recall
Ped Recall
Cond Service Inhibit.
Phase Omit	X
Special Function

Alt Sequence A B C D E F

TOD Program Steps

 Step 3 Program 1 Step Begins 1530

Flash. Dimming Enable.
 Red Rest Alt Veh Extension
 Spare 5. Det Log Enable.
 Spare 3. Spare 4
 Type 0 Dly Enable. . . Spare 2
 Det Diag Plan. . . . 0

	Phase Number											
	1	2	3	4	5	6	7	8	9	10	11	12
Max 2 Enable
Max 3 Enable	X	X	X	.	X	.	X
Veh Recall
Veh Max Recall
Ped Recall
Cond Service Inhibit.
Phase Omit	X
Special Function

Alt Sequence A B C D E F

Step 4 Program 1 Step Begins 1800

Flash. Dimming Enable.
 Red Rest Alt Veh Extension
 Spare 5. Det Log Enable.
 Spare 3. Spare 4
 Type 0 Dly Enable. . . Spare 2
 Det Diag Plan. . . . 0

	Phase Number											
	1	2	3	4	5	6	7	8	9	10	11	12
Max 2 Enable	X	.	X	.	X	.	X
Max 3 Enable
Veh Recall
Veh Max Recall
Ped Recall
Cond Service Inhibit.
Phase Omit	X
Special Function

Alt Sequence A B C D E F

TOD Program Steps

Step 5 Program 1 Step Begins 2300

Flash.	X	Dimming Enable.
Red Rest	Alt Veh Extension
Spare 5.	Det Log Enable.
Spare 3.	Spare 4
Type 0 Dly Enable.	Spare 2
Det Diag Plan.	0												

Phase Number

		1	2	3	4	5	6	7	8	9	10	11	12
Max 2 Enable
Max 3 Enable
Veh Recall
Veh Max Recall
Ped Recall
Cond Service Inhibit.
Phase Omit	X
Special Function

		A	B	C	D	E	F						
Alt Sequence

Step 6 Program 2 Step Begins 0600

Flash.	Dimming Enable.
Red Rest	Alt Veh Extension
Spare 5.	Det Log Enable.
Spare 3.	Spare 4
Type 0 Dly Enable.	Spare 2
Det Diag Plan.	0												

Phase Number

		1	2	3	4	5	6	7	8	9	10	11	12
Max 2 Enable	X	.	.	X	.	X	.	X
Max 3 Enable
Veh Recall
Veh Max Recall
Ped Recall
Cond Service Inhibit.
Phase Omit	X
Special Function

		A	B	C	D	E	F						
Alt Sequence

TOD Program Steps

 Step 7 Program 2 Step Begins 2300

Flash. X Dimming Enable.
 Red Rest Alt Veh Extension
 Spare 5. Det Log Enable.
 Spare 3. Spare 4
 Type 0 Dly Enable. Spare 2
 Det Diag Plan. 0

	Phase Number											
	1	2	3	4	5	6	7	8	9	10	11	12
Max 2 Enable
Max 3 Enable
Veh Recall
Veh Max Recall
Ped Recall
Cond Service Inhibit.
Phase Omit	X
Special Function

Alt Sequence A B C D E F

Step 8 Program 1 Step Begins 0730

Flash. Dimming Enable.
 Red Rest Alt Veh Extension
 Spare 5. Det Log Enable.
 Spare 3. Spare 4
 Type 0 Dly Enable. Spare 2
 Det Diag Plan. 0

	Phase Number											
	1	2	3	4	5	6	7	8	9	10	11	12
Max 2 Enable
Max 3 Enable
Veh Recall
Veh Max Recall
Ped Recall
Cond Service Inhibit.
Phase Omit
Special Function

Alt Sequence A B C D E F
