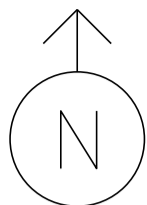


MS # 572

VT 2A NORTH

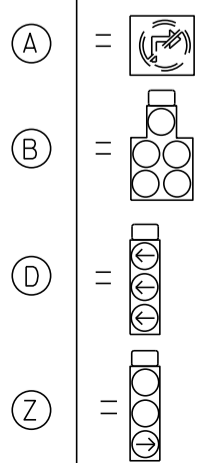
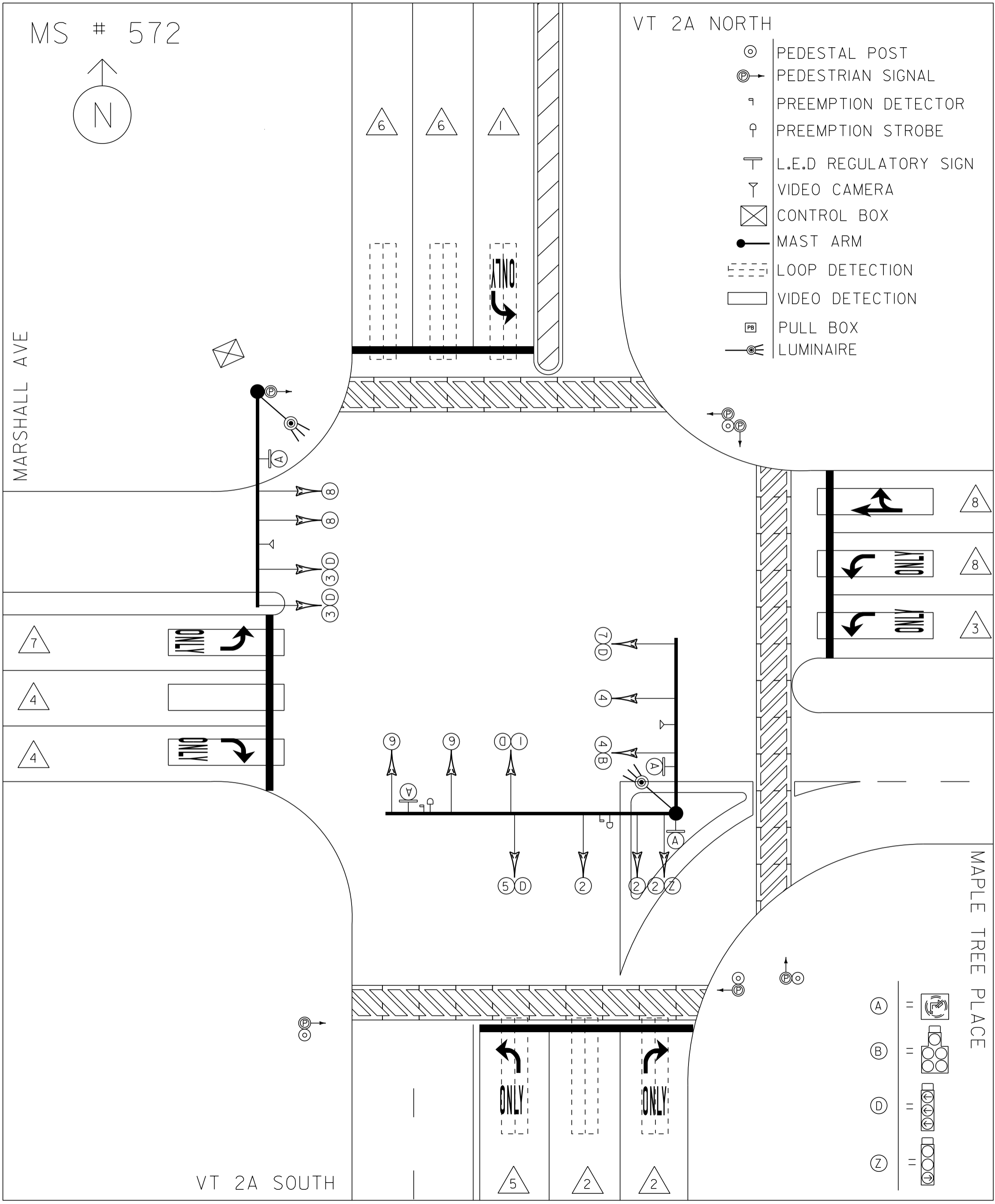


- ⊙ PEDESTAL POST
- ⊙→ PEDESTRIAN SIGNAL
- ⌞ PREEMPTION DETECTOR
- ♀ PREEMPTION STROBE
- ⊥ L.E.D REGULATORY SIGN
- ∇ VIDEO CAMERA
- ⊠ CONTROL BOX
- MAST ARM
- - - LOOP DETECTION
- ▭ VIDEO DETECTION
- ⊠ PB PULL BOX
- LUMINAIRE

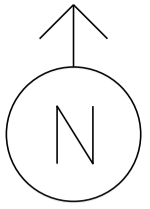
MARSHALL AVE

MAPLE TREE PLACE

VT 2A SOUTH



MS # 572



VT 2A NORTH

MARSHALL AVE

12' 11' 11' 12'

LANE LINE 380'

LANE LINE 380'

ONLY

STOP BAR 34'

CROSSWALK 70'

12'

12'

12'

LANE LINE 285'

ONLY



12'

LANE LINE 285'

ONLY



12'

STOP BAR 44'

STOP BAR 36'

CROSSWALK 100'



12'

LANE LINE 255'



ONLY

12'

LANE LINE 255'



ONLY

12'

12'

12'

MAPLE TREE PLACE

CROSSWALK 70'



ONLY

LANE LINE 465'

STOP BAR 40'



ONLY

LANE LINE 465'

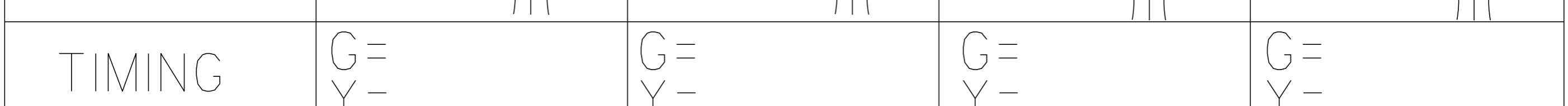
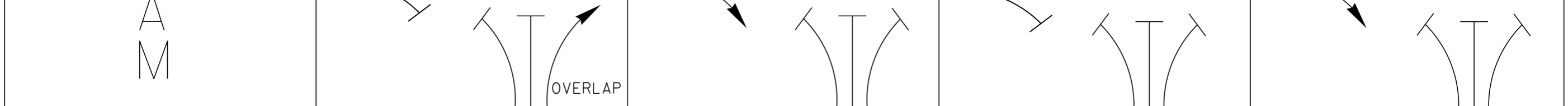
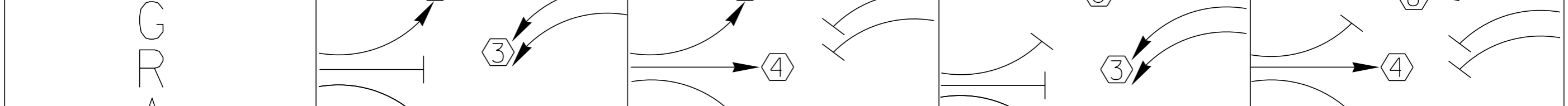
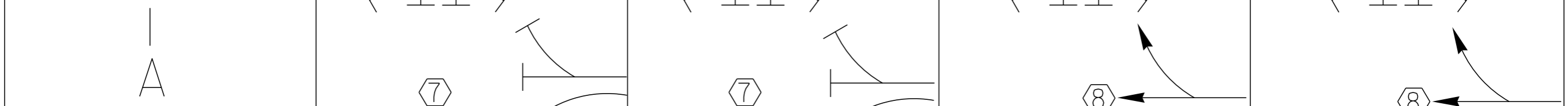
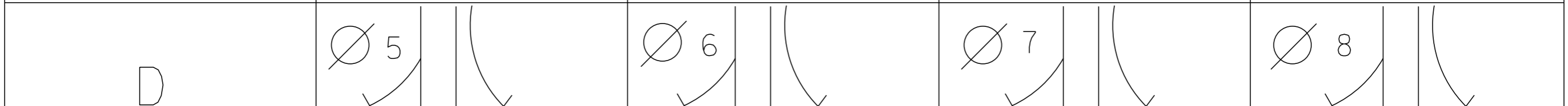
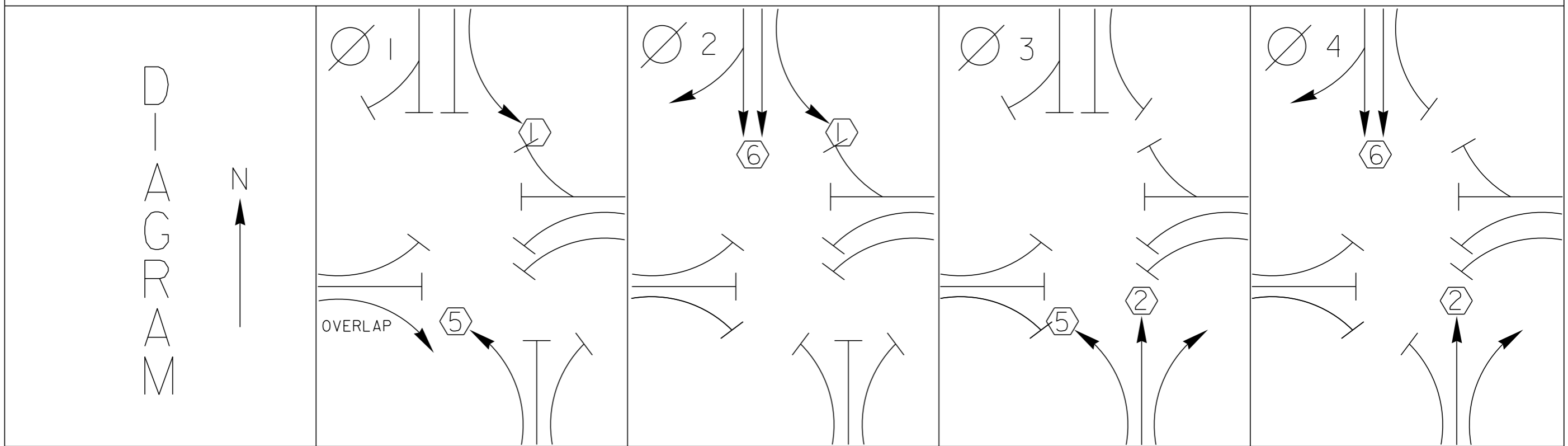
12' 12'

11'

11'

12'

VT 2A SOUTH



TIMING

G =
Y =

G =
Y =

G =
Y =

G =
Y =

TIMING

G =
Y =

G =
Y =

G =
Y =

G =
Y =

PROTECTED
TURNS

PERMITTED
TURNS

PEDESTRIAN

CYCLE LENGTH, C= _____ S



PROPERTY OF
VT. AGENCY OF TRANS.
MAINTENANCE DIV.
IN EMERGENCY CALL
SUP. TRAFFIC OFFICE
1007 S. WATSON
MONTPELIER, VT.



WARNING
DO NOT OPERATE
CABINET WITHOUT
CONFLICT MONITOR UNIT

DANGER
115 VOLTS A.C.

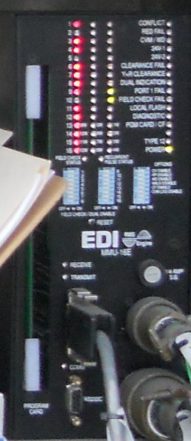
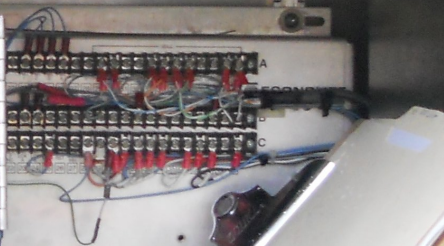
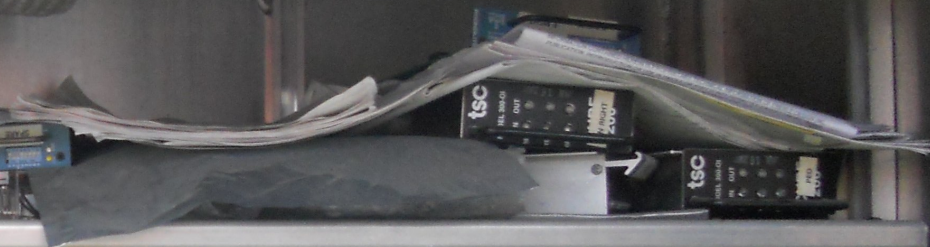
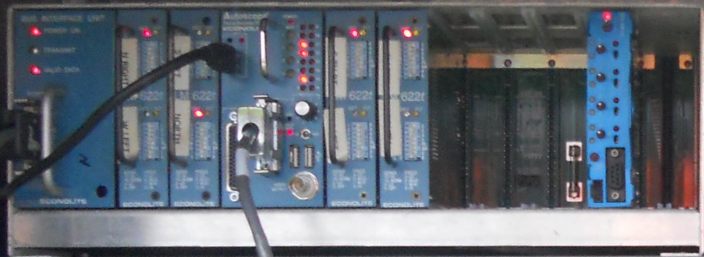
TURN ON
D.R.C.

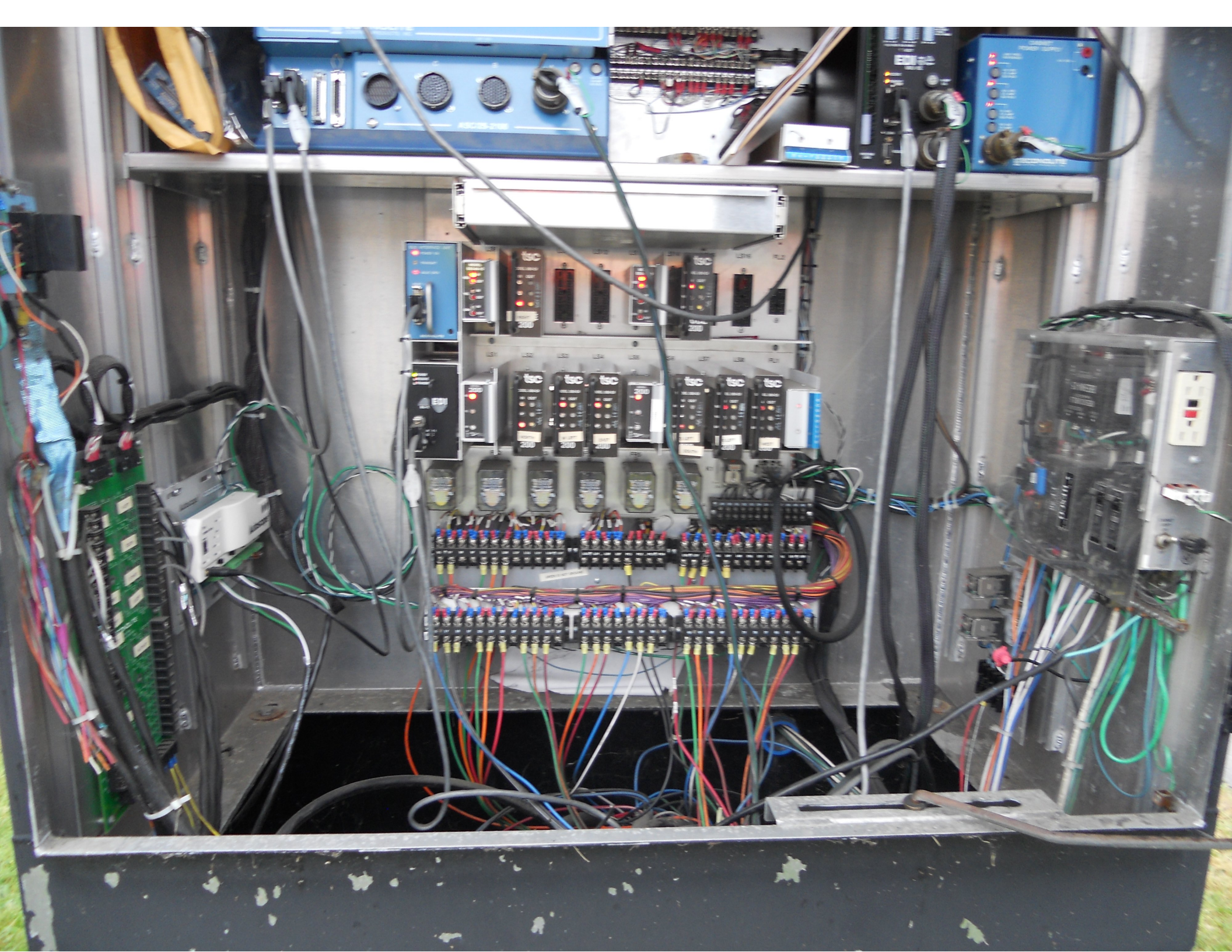
SENSOR 11 3 01 WES
SEP 160 212 744 EAST

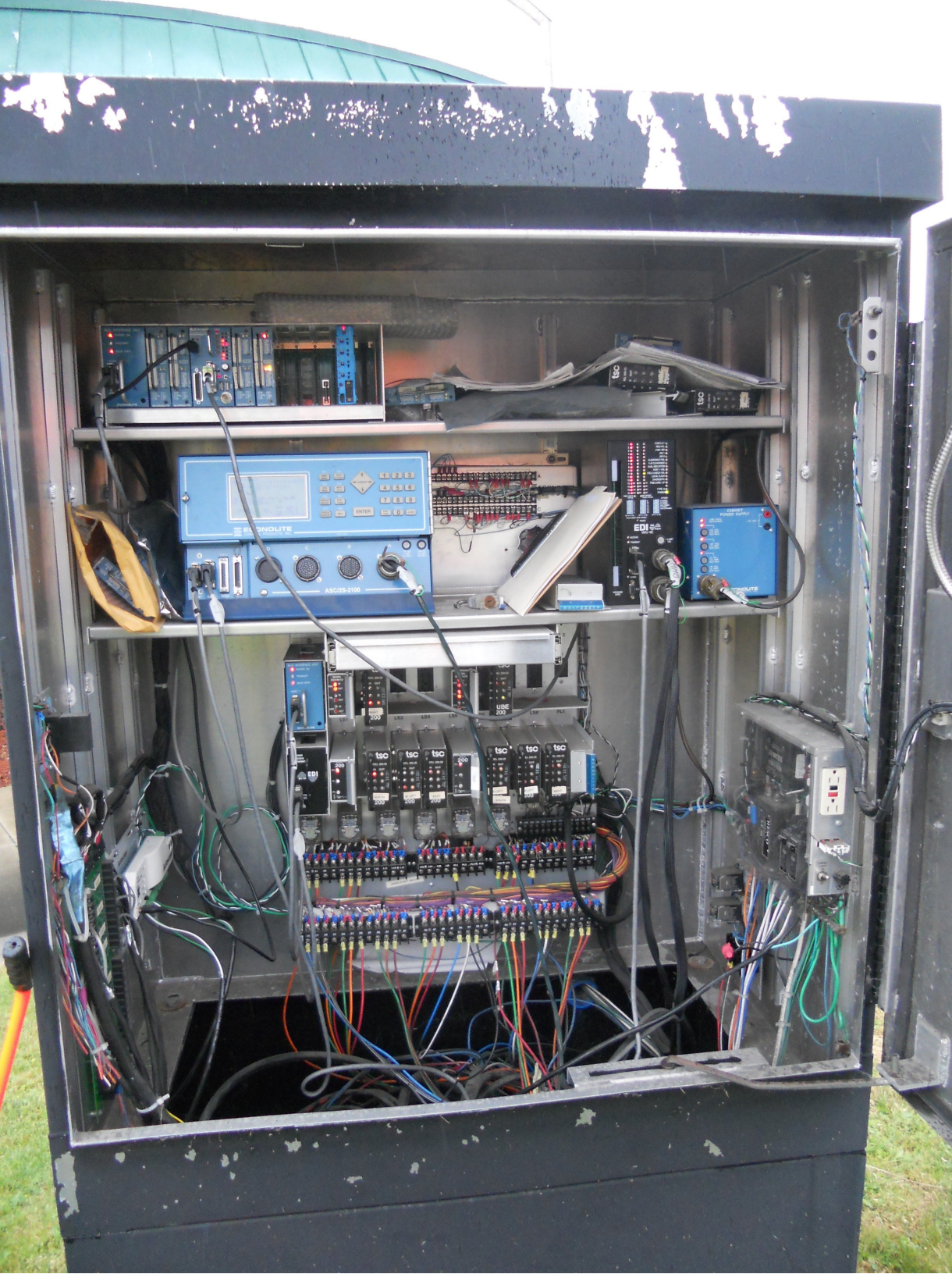
CONTROLLER ON OFF	SIGNALS AUTO FLASH
MAIN ON OFF	STOP TIME ON OFF ON

SECONOLITE









TURN ON

12 11 01

NG

ATE

OUT

DA

115 VO

PROPERTY OF
VT. AGENCY OF TRANS.
MAINTENANCE DIV.

IN EMERGENCY CALL:
DIST. TRANS. OFFICE

NIGHT & WEEKENDS:

INTERSECTION NO.

[Redacted]
[Redacted]
[Redacted]



ONLY

ONLY











0E-15.0X35
7E-9.61/52
7E-8.0X35
551.51 2281
TOM METAL CORPORATION







PONDEROSA
STEAKHOUSE







ONLY ONLY





PENDEROSA
STEAKHOUSE

SILVERADO
4700
HBKN 560

7

Yellow diamond sign

Yellow diamond sign







L... SHORN HOUSE

Maple Tree Place



TO CROSS
PLEASE STOP
LOOK LEFT
LOOK RIGHT
LOOK LEFT
BE CAREFUL
OF TRAFFIC







PONDEROSA
STEAKHOUSE



LEGAL TO BE FOR STATE HIGHWAY



0E-15.0X32'

7E-9.61X50'

55KSI

2001

UNION METAL CORPORATION



ONLY

ONLY

PONDICOLA



LONGHORN



11th Ave

VT 484

VERMONT







TO CROSS
PUSH BUTTON

 SOPE (SOPE) AND/OR
WHEELCHAIR (WHEELCHAIR)
TURNING LEFT

 SOPE (SOPE)
PUSH BUTTON
IF NEEDED

 PEDESTRIAN
SHOULD STOP
AT CROSSWALK





Marshall Ave

TO CROSS
PUSH BUTTON

-  START CROSSING
WATCH FOR
TURNING CARS
-  DON'T START
FINISH CROSSING
IF STARTED
-  PEDESTRIANS
SHOULD NOT BE
IN CROSSWALK



By-Phase Timing Data

Direction	Phase											
	1	2	3	4	5	6	7	8	9	10	11	12
Minimum Green	5	5	5	5	5	5	5	5	0	0	0	0
Bike Min Green	0	0	0	0	0	0	0	0	0	0	0	0
Cond Serv Min Grn	0	0	0	0	0	0	0	0	0	0	0	0
Walk	0	0	0	0	0	0	0	0	5	0	0	0
Ped Clearance	0	7	0	7	0	7	0	7	17	7	0	7
Veh Extension	2.0	2.0	4.0	4.0	4.0	2.0	4.0	4.0	0.0	0.0	0.0	0.0
Alt Veh Exten	0.0	0.0	0.0	0.0	0.0	0.0	4.0	0.0	0.0	0.0	0.0	0.0
Max Extension	0	0	0	0	0	0	0	0	0	0	0	0
Max 1	5	43	7	5	29	19	5	7	0	0	0	0
Max 2	5	37	7	15	24	18	9	13	0	0	0	0
Max 3	5	43	10	10	27	25	7	13	0	0	0	0
Det. Fail Max	0	0	0	0	0	0	0	0	0	0	0	0
Yellow Change	4.0	4.0	4.0	4.0	4.0	4.0	4.0	4.0	3.0	3.0	3.0	3.0
Red Clearance	2.0	2.0	2.0	2.0	2.0	2.0	2.0	2.0	0.0	0.0	0.0	0.0
Red Revert	2.0	2.0	2.0	2.0	2.0	2.0	2.0	2.0	2.0	2.0	2.0	2.0
Act. B4 Init	0	0	0	0	0	0	0	0	0	0	0	0
Sec/Actuation	0.0	0.0	0.0	0.0	0.0	0.0	0.0	0.0	0.0	0.0	0.0	0.0
Max Initial	0	0	0	0	0	0	0	0	0	0	0	0
Time B4 Reduction	0	0	0	0	0	0	0	0	0	0	0	0
Cars Waiting	0	0	0	0	0	0	0	0	0	0	0	0
Time To Reduce	0	0	0	0	0	0	0	0	0	0	0	0
Minimum Gap	2.0	2.0	2.0	2.0	2.0	2.0	2.0	2.0	0.0	0.0	0.0	0.0

Coordination Patterns

```

-----
Pattern 1
Cycle Length . . . 84  COS . . . . . 111
Offset . . . . . 71
Vehicle Permissive . . [1] 0 [2] 0
Vehicle Perm 2 Displacement 0 Phase Reservice. . NO
Splits: Phase 1- 11 2- 49 3- 13 4- 11
          Phase 5- 35 6- 25 7- 11 8- 13
          Phase 9- 1 10- 0 11- 0 12- 0 Split Sum: 0
Split Extension/Ring [1] 0 [2] 0
Split Demand Pattern [1] 0 [2] 0
XRT Pattern. . . 0
Phase Number: 1 2 3 4 5 6 7 8 9 10 11 12
Coord Phases . . . X . . . X . . . . .
Veh Recall . . . . . . . . . . .
Veh Max Recall . . . . . . . . . . .
Ped Recall . . . . . . . . . . .
Veh Omit . . . . . . . . . . .
Alt Sequence . . A: . B: . C: . D: . E: . F: .
-----
    
```

```

-----
Pattern 2
Cycle Length . . . 88  COS . . . . . 211
Offset . . . . . 10
Vehicle Permissive . . [1] 0 [2] 0
Vehicle Perm 2 Displacement 0 Phase Reservice. . NO
Splits: Phase 1- 11 2- 43 3- 13 4- 21
          Phase 5- 30 6- 24 7- 15 8- 19
          Phase 9- 1 10- 0 11- 0 12- 0 Split Sum: 0
Split Extension/Ring [1] 0 [2] 0
Split Demand Pattern [1] 0 [2] 0
XRT Pattern. . . 0
Phase Number: 1 2 3 4 5 6 7 8 9 10 11 12
Coord Phases . . . X . . . X . . . . .
Veh Recall . . . . . . . . . . .
Veh Max Recall . . . . . . . . . . .
Ped Recall . . . . . . . . . . .
Veh Omit . . . . . . . . . . .
Alt Sequence . . A: . B: . C: . D: . E: . F: .
-----
    
```

```

-----
Pattern 3
Cycle Length . . . 96  COS . . . . . 311
Offset . . . . . 22
Vehicle Permissive . . [1] 0 [2] 0
Vehicle Perm 2 Displacement 0 Phase Reservice. . NO
Splits: Phase 1- 14 2- 49 3- 16 4- 17
          Phase 5- 31 6- 32 7- 16 8- 17
          Phase 9- 1 10- 0 11- 0 12- 0 Split Sum: 0
Split Extension/Ring [1] 0 [2] 0
Split Demand Pattern [1] 0 [2] 0
XRT Pattern. . . 0
Phase Number: 1 2 3 4 5 6 7 8 9 10 11 12
Coord Phases . . . X . . . X . . . . .
Veh Recall . . . . . . . . . . .
Veh Max Recall . . . . . . . . . . .
Ped Recall . . . . . . . . . . .
Veh Omit . . . . . . . . . . .
Alt Sequence . . A: . B: . C: . D: . E: . F: .
-----
    
```


NIC Program Steps

Step	Program	Step Begins	Pattern	Override
1	1	0600	1	NO
2	1	1000	2	NO
3	1	1430	3	NO
4	1	1900	2	NO
5	1	2200	0	NO
6	2	0600	1	NO
7	2	0900	3	NO
8	2	2200	0	NO

TOD Program Steps

 Step 1 Program 1 Step Begins 0600

Flash. Dimming Enable.
 Red Rest Alt Veh Extension
 Spare 5. Det Log Enable.
 Spare 3. Spare 4
 Type 0 Dly Enable. . . Spare 2
 Det Diag Plan. . . . 0

Phase Number

	1	2	3	4	5	6	7	8	9	10	11	12
Max 2 Enable
Max 3 Enable
Veh Recall
Veh Max Recall	X	.	.	.	X
Ped Recall
Cond Service Inhibit.
Phase Omit
Special Function

Alt Sequence A B C D E F

Step 2 Program 1 Step Begins 1000

Flash. Dimming Enable.
 Red Rest Alt Veh Extension
 Spare 5. Det Log Enable.
 Spare 3. Spare 4
 Type 0 Dly Enable. . . Spare 2
 Det Diag Plan. . . . 0

Phase Number

	1	2	3	4	5	6	7	8	9	10	11	12
Max 2 Enable	X	X	X	X	X	X	X	X
Max 3 Enable
Veh Recall
Veh Max Recall	X	.	.	.	X
Ped Recall
Cond Service Inhibit.
Phase Omit
Special Function

Alt Sequence A B C D E F

TOD Program Steps

 Step 3 Program 1 Step Begins 1430

Flash. Dimming Enable.
 Red Rest Alt Veh Extension
 Spare 5. Det Log Enable.
 Spare 3. Spare 4
 Type 0 Dly Enable. . . Spare 2
 Det Diag Plan. . . . 0

Phase Number

	1	2	3	4	5	6	7	8	9	10	11	12
Max 2 Enable
Max 3 Enable	X	X	X	X	X	X	X	X
Veh Recall
Veh Max Recall	X	.	.	.	X
Ped Recall
Cond Service Inhibit.
Phase Omit
Special Function

Alt Sequence A B C D E F

Step 4 Program 1 Step Begins 1900

Flash. Dimming Enable.
 Red Rest Alt Veh Extension
 Spare 5. Det Log Enable.
 Spare 3. Spare 4
 Type 0 Dly Enable. . . Spare 2
 Det Diag Plan. . . . 0

Phase Number

	1	2	3	4	5	6	7	8	9	10	11	12
Max 2 Enable	X	X	X	X	X	X	X	X
Max 3 Enable
Veh Recall	X	.	.	.	X
Veh Max Recall
Ped Recall
Cond Service Inhibit.
Phase Omit
Special Function

Alt Sequence A B C D E F

TOD Program Steps

 Step 5 Program 1 Step Begins 2200

Flash. Dimming Enable.
 Red Rest Alt Veh Extension
 Spare 5. Det Log Enable.
 Spare 3. Spare 4
 Type 0 Dly Enable. . . Spare 2
 Det Diag Plan. . . . 0

Phase Number

	1	2	3	4	5	6	7	8	9	10	11	12
Max 2 Enable
Max 3 Enable
Veh Recall
Veh Max Recall	X	.	.	.	X
Ped Recall
Cond Service Inhibit.
Phase Omit
Special Function

Alt Sequence A B C D E F

Step 6 Program 2 Step Begins 0600

Flash. Dimming Enable.
 Red Rest Alt Veh Extension
 Spare 5. Det Log Enable.
 Spare 3. Spare 4
 Type 0 Dly Enable. . . Spare 2
 Det Diag Plan. . . . 0

Phase Number

	1	2	3	4	5	6	7	8	9	10	11	12
Max 2 Enable
Max 3 Enable
Veh Recall
Veh Max Recall	X	.	.	.	X
Ped Recall
Cond Service Inhibit.
Phase Omit
Special Function

Alt Sequence A B C D E F
