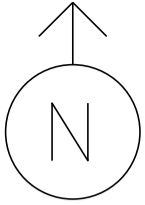


MS # 569



VT 2A NORTH

- ⊙ PEDESTAL POST
- ⊙→ PEDESTRIAN SIGNAL
- T L.E.D REGULATORY SIGN
- ⊠ CONTROL BOX
- - - - LOOP DETECTION
- PB PULL BOX
- LUMINAIRE
- (A) =
- (B) =
- (C) =

INDUSTRIAL AVE

7

4

ONLY

6

6

1

ONLY

ONLY

9

9

(B) 1

8

(C)

(C)

(7) (B)

4

(5) (B)

2

(A)

(A)

(B)

8

MTN VIEW RD.

ONLY

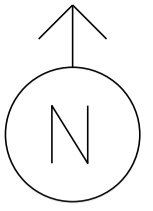
5

2

VT 2A SOUTH

NOT TO SCALE

MS # 569



VT 2A NORTH

INDUSTRIAL AVE

12' 12' 12' 12'

LANE LINE 250'

LANE LINE 100'

ONLY

ONLY

STOP BAR 12'

STOP BAR 30'

STOP BAR 15'

12'

12'

12'

ONLY



LANE LINE 220'

STOP BAR 38'

12'

CROSSWALK 96'

CROSSWALK 70'

CROSSWALK 25'

STOP BAR 10'

12'

STOP BAR 12'



ONLY

12'

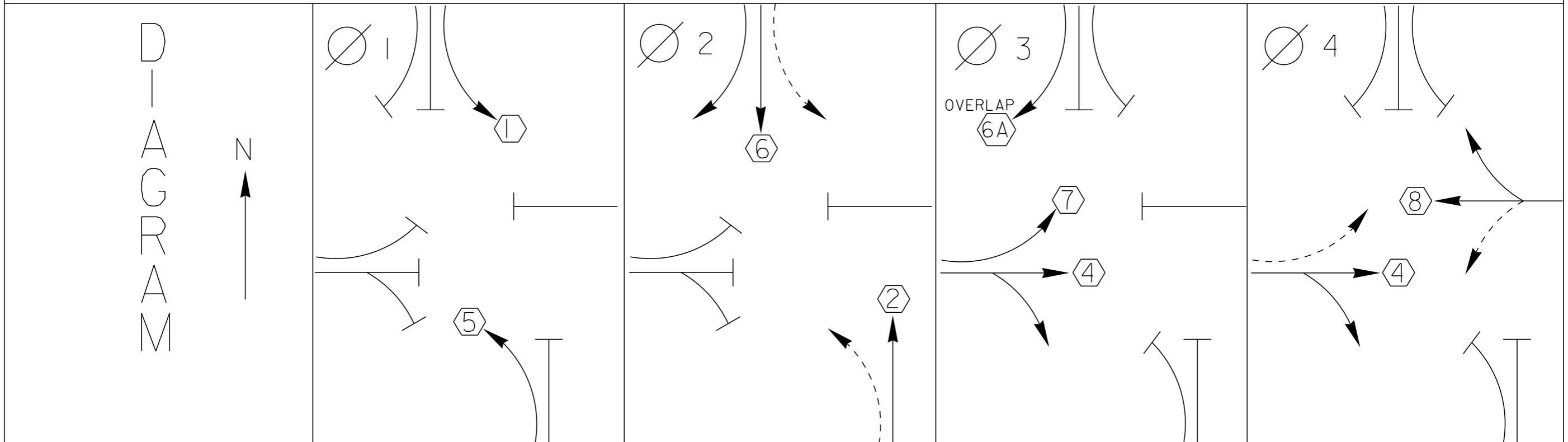
10'

LANE LINE 80'

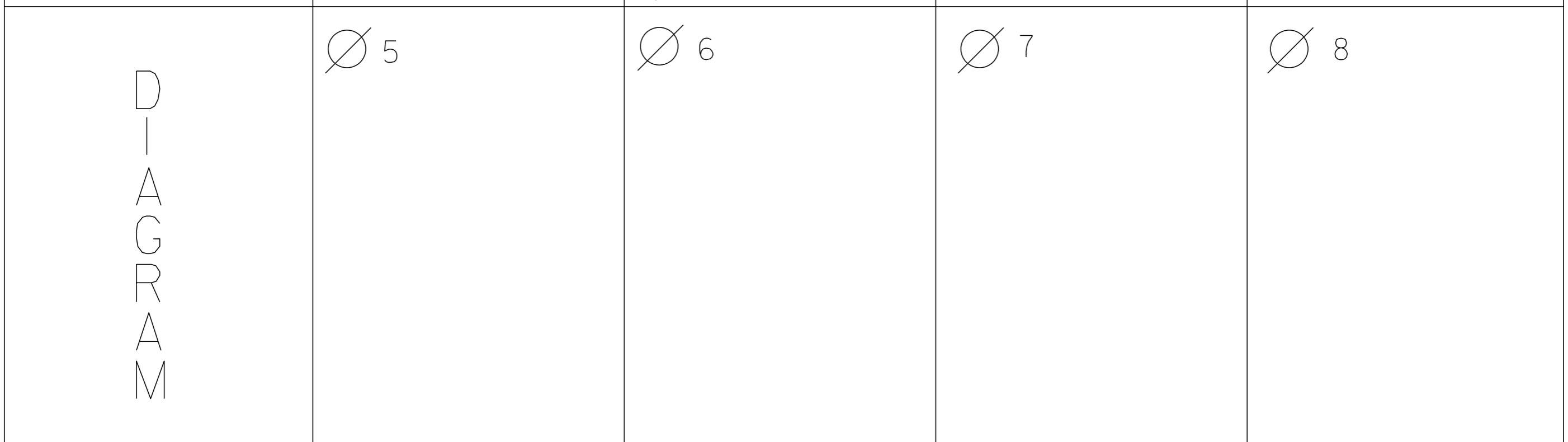
MTN VIEW RD.

VT 2A SOUTH

NOT TO SCALE



TIMING	G = Y =	G = Y =	G = Y =	G = Y =
--------	------------	------------	------------	------------



TIMING	G = Y =	G = Y =	G = Y =	G = Y =
--------	------------	------------	------------	------------



CYCLE LENGTH, C = _____ S



New Cabinet 9-17-02
Controller

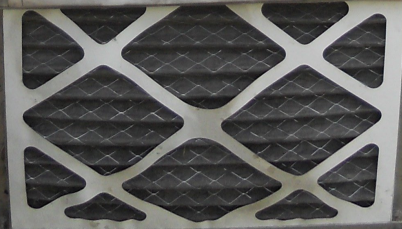
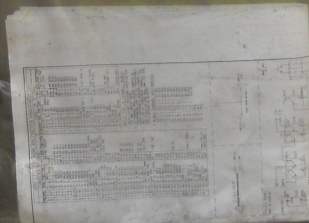
WARNING

DO NOT OPERATE
CABINET WITHOUT
CONFLICT MONITOR UNIT

DANGER

115 VOLTS A.C.

The control panel features several controls: a 'CONTROLLER' switch with 'ON' and 'OFF' positions; a 'MAIN' switch with 'ON' and 'OFF' positions; a 'STOP TIME' switch with 'AUTO', 'OFF', and 'ON' positions; a 'SIGNAL' indicator with 'AUTO' and 'FLASH' labels; and a set of four indicator lights. A small orange label is visible to the right of the panel.



BUS INTERFACE UNIT

- POWER ON
- TRANSMIT
- VALID DATA

PORT

LM 622t (x5)

SCONOLITE

EAST/RT SO/LT EAST/LT NORTH/LT WEST

EAST/THR NO/THR SO/RT SO/THR WES

CONNER WAY

NIC/TOD SUBMENU

- CLOCK/CALENDAR
- WEEKLY PROGRAM
- YEARLY PROGRAM
- HOLIDAYS
- NIC PROG STEPS
- TOD PROG STEPS

F1 MAIN MENU F2 NEXT SCREEN

F3 SUB MENU F4 NEXT DATA

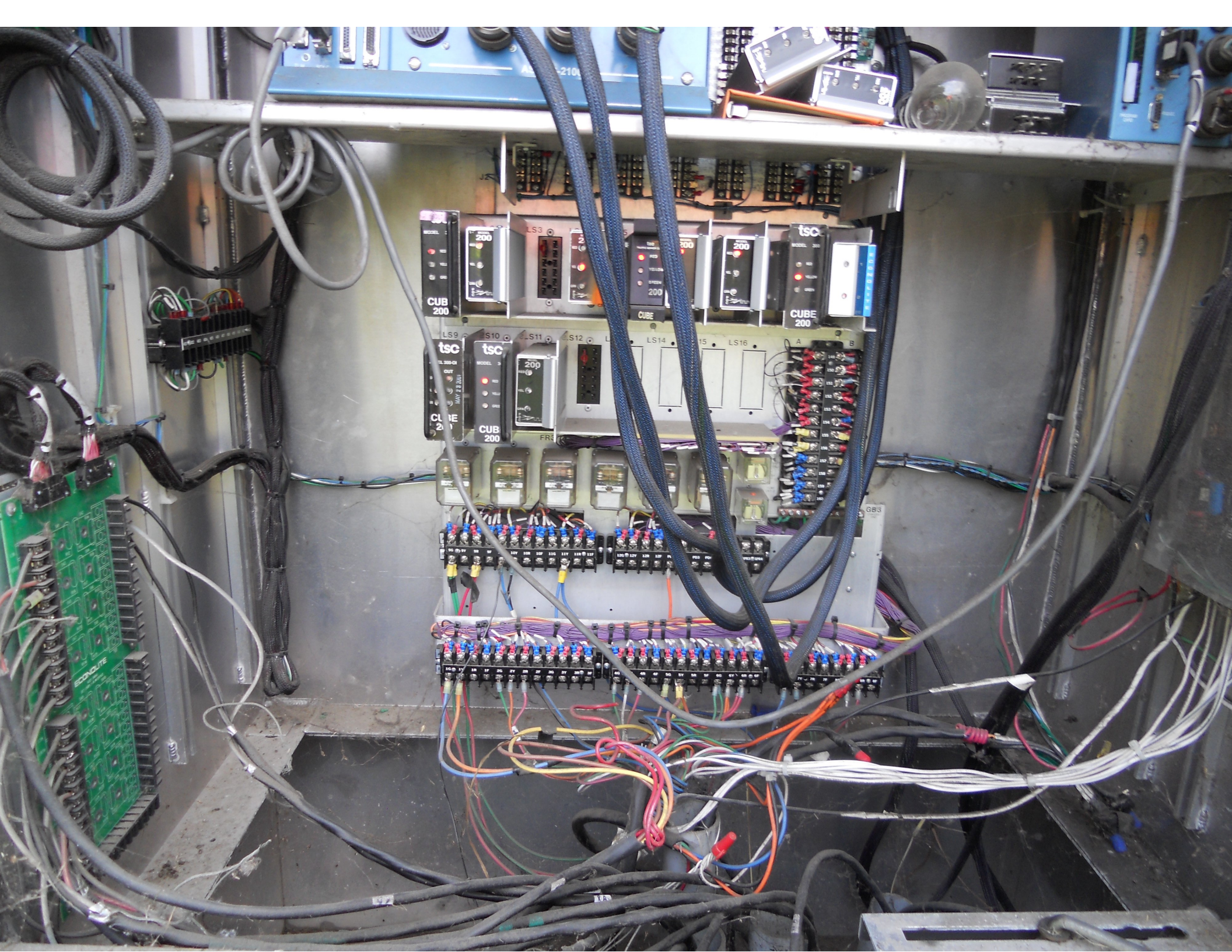
F5 F6

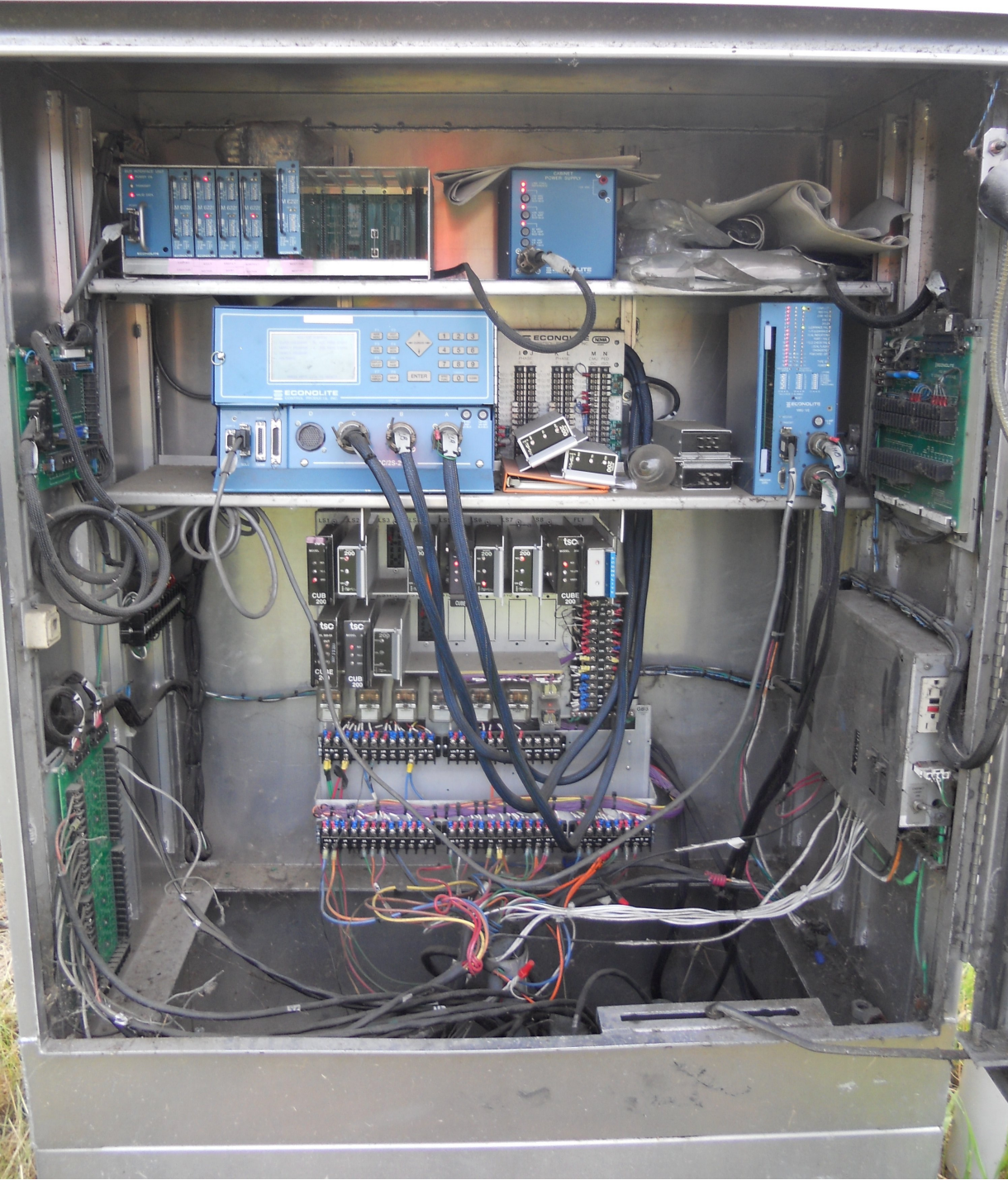
1 2 3

4 5 6

7 8 9

CURSOR





HAZARD OF ELECTRICAL SHOCK
OR BURN IF COVER REMOVED
SERVICE BY UTILITY
AUTHORIZED PERSONNEL ONLY
DO NOT PAINT OVER OR REMOVE THIS LABEL
704820000 REV.1


GE Watthour Meter

9 0 1 2 3 4 5 6 7 8
7 6 5 4 3 2 1 0 9 8
9 0 1 2 3 4 5 6 7 8
7 6 5 4 3 2 1 0 9 8
9 0 1 2 3 4 5 6 7 8
7 6 5 4 3 2 1 0 9 8

Rr 138⁶/₉ KILOWATTHOURS

MADE IN U.S.A.

CL200 240v 3W FM2S Kh7.2 TA30
TYPE 1-70-S/2 WATTHOUR METER 60Hz
CAT. NO. 720X86G 3

095133
74 273 576
GENERAL ELECTRIC

CIRCUIT BREAKER FLAP
DO NOT OPEN
DO NOT SEAL







LEFT LANE
MUST
TURN LEFT



LEFT TURN
YIELD
ON GREEN





TO CROSS
PUSH BUTTON

- ▶ DON'T WALK
WALKING LIGHTS
ARE OFF
- ▶ DON'T WALK
PUSH BUTTON
IF NECESSARY
- ▶ DON'T WALK
WALKING LIGHTS
ARE OFF









ONLY

ONLY



←
ONLY



Health & Vision

Green street sign



LEFT TURN
YIELD
ON GREEN















12"-32"
48,000-5GA.



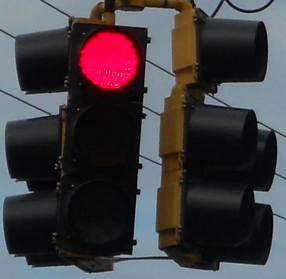




Mountain View Rd















LEFT TURN
YIELD
ON GREEN

SOUTH
2A





.6"-35"
48.000-0.315



2A

© 2012 Google

Google earth

Imagery Date: 5/19/2012



1999

44°27'54.31" N 73°06'47.50" W elev 386 ft

Eye all 678 ft



NIC Program Steps

Step	Program	Step Begins	Pattern	Override
------	---------	-------------	---------	----------

TOD Program Steps

Step 1 Program 1 Step Begins 0500

Flash. Dimming Enable.
Red Rest Alt Veh Extension
Spare 5. Det Log Enable.
Spare 3. Spare 4
Type 0 Dly Enable. . . Spare 2
Det Diag Plan. . . . 0

Phase Number

 1 2 3 4 5 6 7 8 9 10 11 12
Max 2 Enable
Max 3 Enable
Veh Recall
Veh Max Recall
Ped Recall
Cond Service Inhibit.
Phase Omit
Special Function

 A B C D E F

Alt Sequence

Step 2 Program 1 Step Begins 0900

Flash. Dimming Enable.
Red Rest Alt Veh Extension
Spare 5. Det Log Enable.
Spare 3. Spare 4
Type 0 Dly Enable. . . Spare 2
Det Diag Plan. . . . 0

Phase Number

 1 2 3 4 5 6 7 8 9 10 11 12
Max 2 Enable X . X X X X X
Max 3 Enable
Veh Recall
Veh Max Recall
Ped Recall
Cond Service Inhibit.
Phase Omit
Special Function

 A B C D E F

Alt Sequence

TOD Program Steps

Step 3 Program 1 Step Begins 1500

Flash. Dimming Enable.
Red Rest Alt Veh Extension
Spare 5. Det Log Enable.
Spare 3. Spare 4
Type 0 Dly Enable. . . Spare 2
Det Diag Plan. . . . 0

Table with 12 columns (Phase Number 1-12) and 8 rows (Max 2 Enable, Max 3 Enable, Veh Recall, Veh Max Recall, Ped Recall, Cond Service Inhibit, Phase Omit, Special Function). Max 3 Enable has 'X' in phases 2, 4, 5, 6, 7, 8.

Alt Sequence A B C D E F

Step 4 Program 1 Step Begins 1800

Flash. Dimming Enable.
Red Rest Alt Veh Extension
Spare 5. Det Log Enable.
Spare 3. Spare 4
Type 0 Dly Enable. . . Spare 2
Det Diag Plan. . . . 0

Table with 12 columns (Phase Number 1-12) and 8 rows (Max 2 Enable, Max 3 Enable, Veh Recall, Veh Max Recall, Ped Recall, Cond Service Inhibit, Phase Omit, Special Function). Max 2 Enable has 'X' in phases 2, 4, 5, 6, 7, 8.

Alt Sequence A B C D E F

TOD Program Steps

Step 5 Program 1 Step Begins 0000

Flash.	X	Dimming Enable.
Red Rest	Alt Veh Extension
Spare 5.	Det Log Enable.
Spare 3.	Spare 4
Type 0 Dly Enable.	Spare 2
Det Diag Plan.	0	

Phase Number

	1	2	3	4	5	6	7	8	9	10	11	12
Max 2 Enable
Max 3 Enable
Veh Recall
Veh Max Recall
Ped Recall
Cond Service Inhibit.
Phase Omit
Special Function

A B C D E F

Alt Sequence
