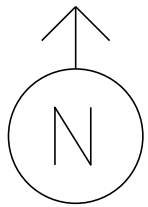


MS # 568

VT 2A NORTH



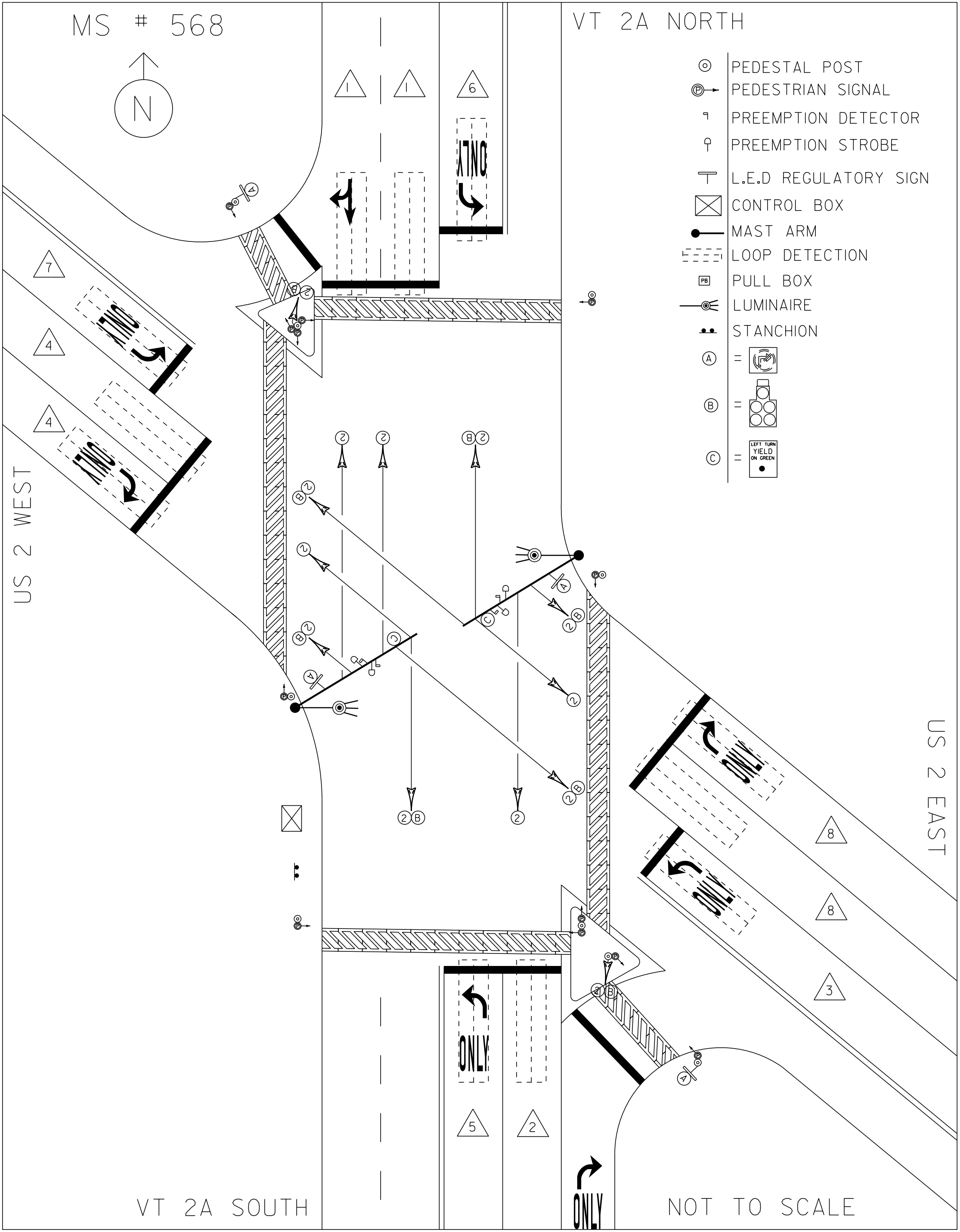
- ⊙ PEDESTAL POST
- ⊙→ PEDESTRIAN SIGNAL
- ⌞ PREEMPTION DETECTOR
- ⌞ PREEMPTION STROBE
- ⌞ L.E.D REGULATORY SIGN
- ⊠ CONTROL BOX
- MAST ARM
- - - LOOP DETECTION
- ⊠ PB PULL BOX
- ⌞ LUMINAIRE
- ⋯ STANCHION
- (A) =
- (B) =
- (C) =

US 2 WEST

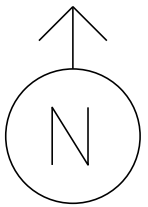
US 2 EAST

VT 2A SOUTH

NOT TO SCALE



MS # 568



VT 2A NORTH

12'

STOP BAR 17'

LANE LINE 390'

ONLY

STOP BAR 21'

STOP BAR 11'

11'

LANE LINE 680'

11'

LANE LINE 305'

11'

STOP BAR 11'

US 2 WEST

STOP BAR 22'

STOP BAR 21'

US 2 EAST

STOP BAR 11'

LANE LINE 200'

11'

LANE LINE 110'

10'

11'

STOP BAR 24'

ONLY

26'

STOP BAR 26'

12'

12'

12'

LANE LINE 535'

12'

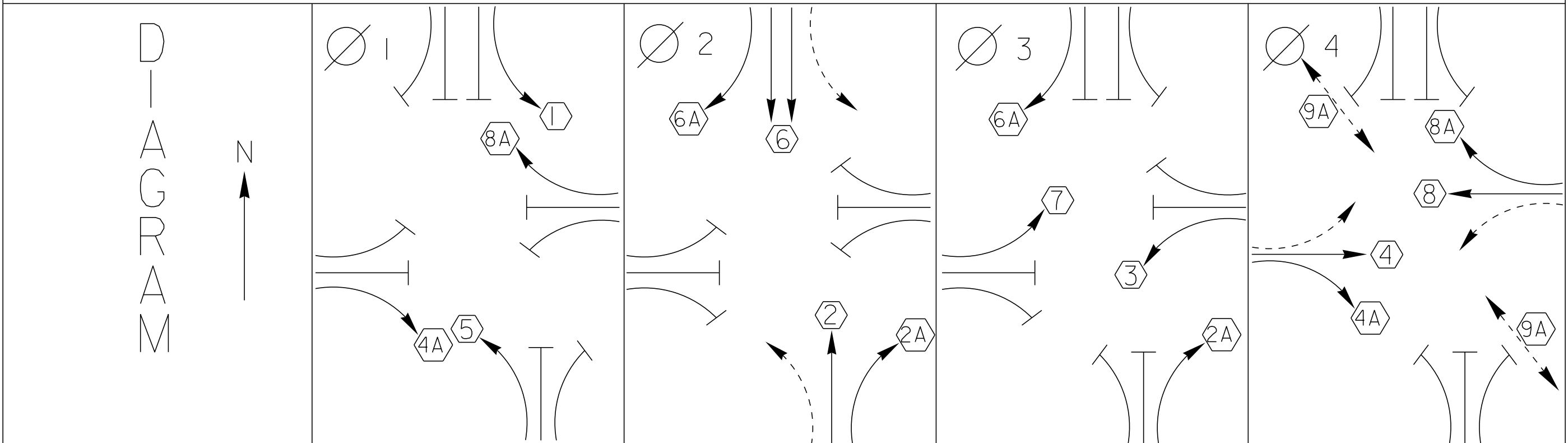
LANE LINE 265'

12'

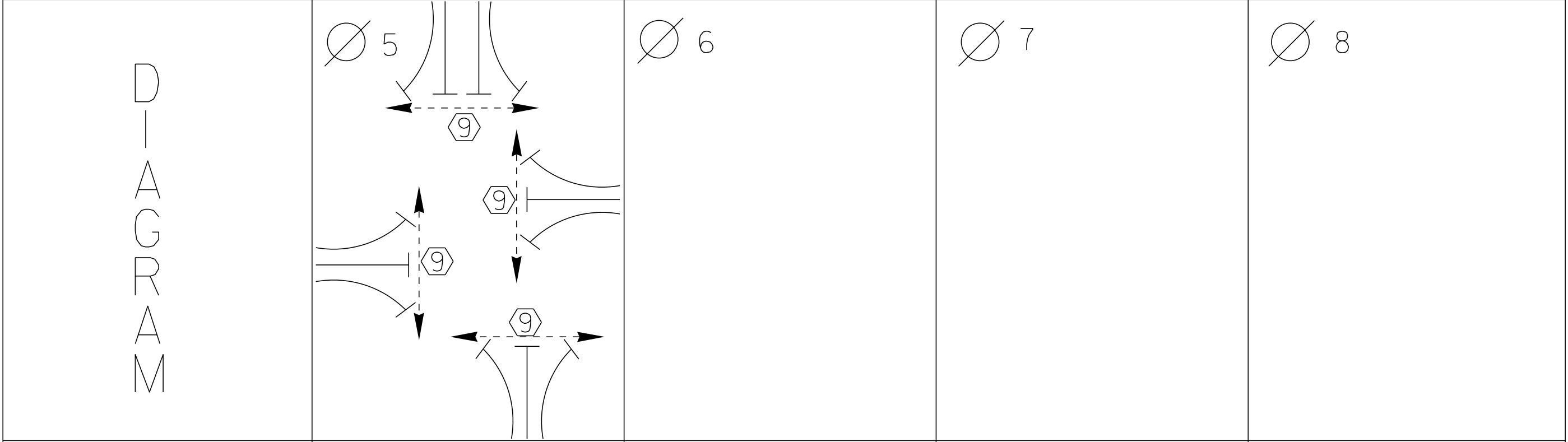
ONLY

VT 2A SOUTH

NOT TO SCALE



TIMING	G = Y =	G = Y =	G = Y =	G = Y =
--------	------------	------------	------------	------------



TIMING	G = Y =	G = Y =	G = Y =	G = Y =
--------	------------	------------	------------	------------

 PROTECTED TURNS	 PERMITTED TURNS PEDESTRIAN	CYCLE LENGTH, C = _____ S
------------------------	--------------------------------------	---------------------------



PROPERTY OF
VT. AGENCY OF TRANS.
MAINTENANCE DIV.

IN EMERGENCY CALL:
DIST. TRANS. OFFICE

NIGHT & WEEKENDS:

INTERSECTION NO.

[Redacted]
[Redacted]
[Redacted]

WARNING

DO NOT OPERATE
CABINET WITHOUT
CONFLICT MONITOR UNIT

TURN ON 10-9-01

DANGER

115 VOLTS A.C.

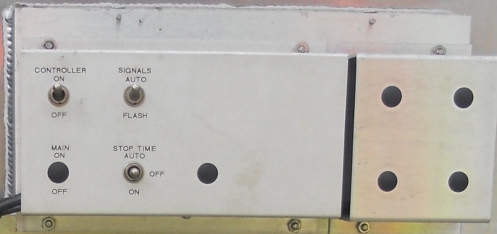
TURN ON
10-9-01

CONTROLLER
ON
OFF

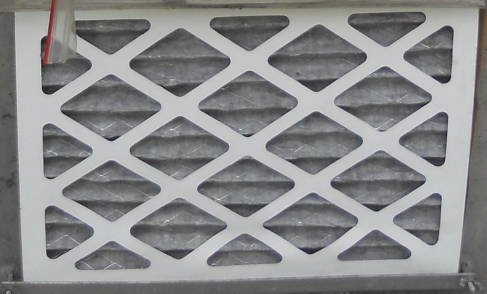
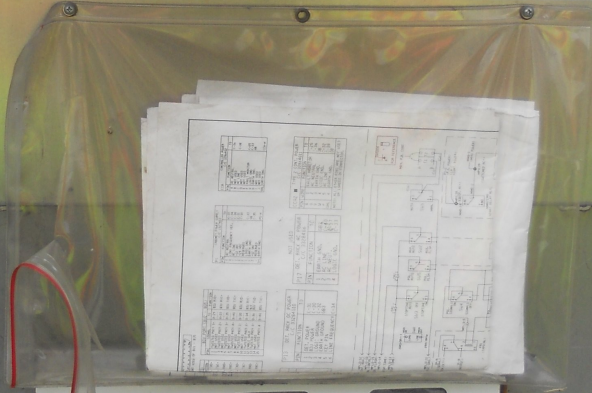
SIGNALS
AUTO
FLASH

MAN
ON
OFF

STOP TIME
AUTO
OFF
ON



ECONOM



WARNING

DO NOT OPERATE
CABINET WITHOUT
CONFLICT MONITOR UNIT

TURN ON 10 9 01

DANG

115 VOLT

TURN ON
10-9-01

BUG INTERFACE UNIT
POWER ON
TRANSMIT
VALID DATA
PORT 1

LM 622 LM 622 LM 622 LM 622 LM 622 LM 622
SPARE

ECONOLITE

ERICSSON
Model 5300
TXD
RXD
PWRD
E-4 W/10
Control
RS232

tsc
HOTEL 300-01
IN OUT
CUBE 200
2000

F1 F2
MAIN MENU NEXT SCREEN
F3 F4
SUB MENU NEXT DATA
F5 F6
DISPLAY ADJUST NEXT PAGE
F7 F8
STATUS DISPLAY HELP

ENTER
SPEC FUNC 0 CLEAR

ECONOLITE
CONTROL PRODUCTS, INC.

TELEMETRY
SDLC
I/O
TERMINAL/MODEM
MODEM

POWER
+12 VDC
+5 VDC
+15 VDC

F1 F2
MAIN MENU NEXT SCREEN
F3 F4
SUB MENU NEXT DATA
F5 F6
DISPLAY ADJUST NEXT PAGE
F7 F8
STATUS DISPLAY HELP

ENTER
SPEC FUNC 0 CLEAR

ECONOLITE
CONTROL PRODUCTS, INC.

ASC/2S-2100

PORT 1
PORT 2
SDLC
TELEMETRY

A B C D

1 2 3
4 5 6
7 8 9
0 CLEAR

CONFLICTS
RED FLAG
DWM WDP
2015A
2015P
CLEARANCE FAIL
T-CLEARWENICA
DUAL INDICATION
PORT FAIL
FIELD CHECK FAIL
LOCAL FLAP
CHANGOTPCA
ROM CARD CP
TYPE 10
POWER

MMU-16E
ECONOLITE
CONTROL PRODUCTS, INC.

PROGRAM CARD

CABINET
POWER SUPPLY

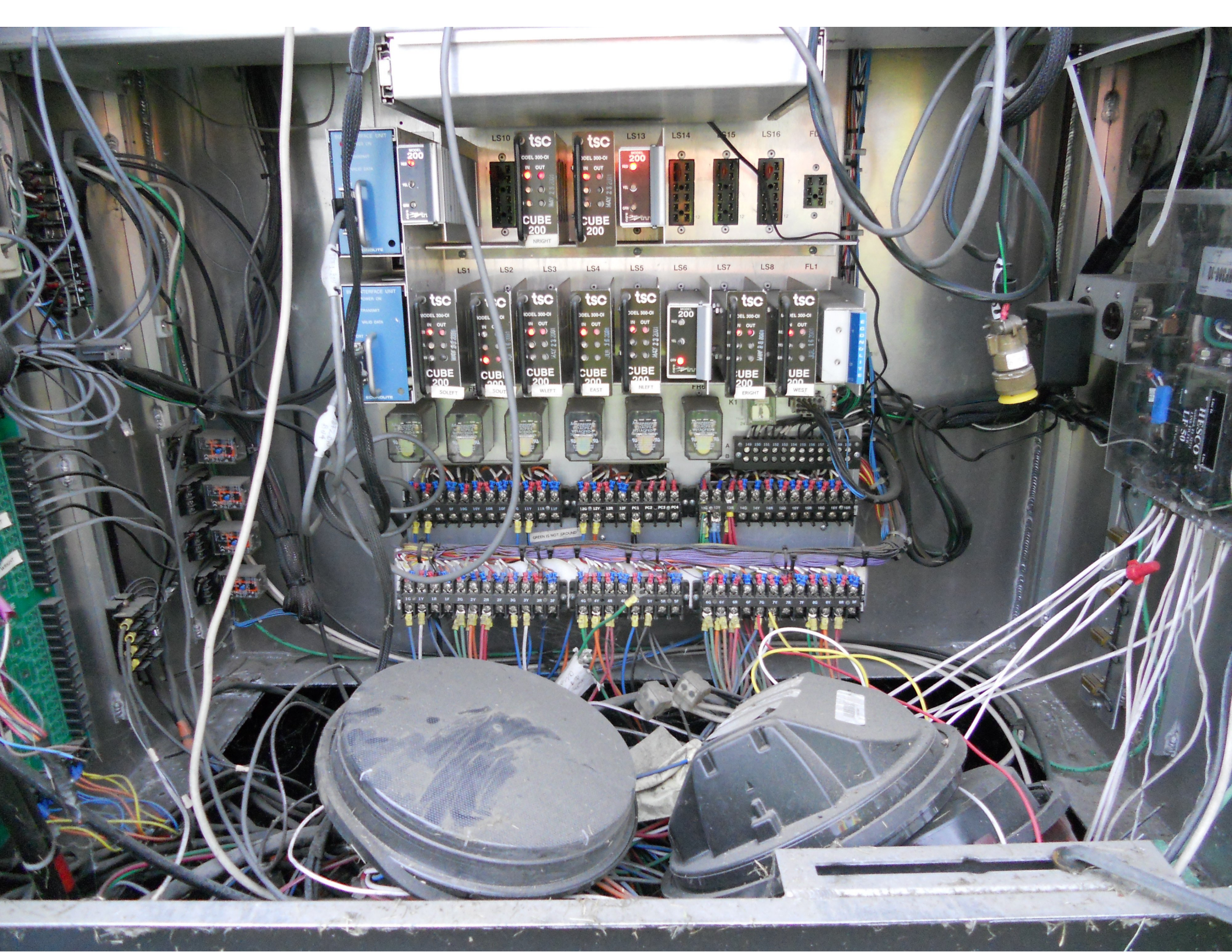
LINE FREQ. REFERENCE
+12 VDC
+5 VDC
+15 VDC
+24 VDC
+28 VDC
+10 VDC
+12 VDC
+15 VDC
+24 VDC
+28 VDC

ECONOLITE
CONTROL PRODUCTS, INC.

RGB INTERP
PWR
TELE
PWR
PWR

CUBE 200
NIGHT

CUBE 200



LS10 tsc MODEL 200-OI IN OUT MAY 22 2001 CUBE 200 NRIGHT
LS13 tsc MODEL 200-OI IN OUT MAY 22 2001 CUBE 200
LS14
LS15
LS16 FL1

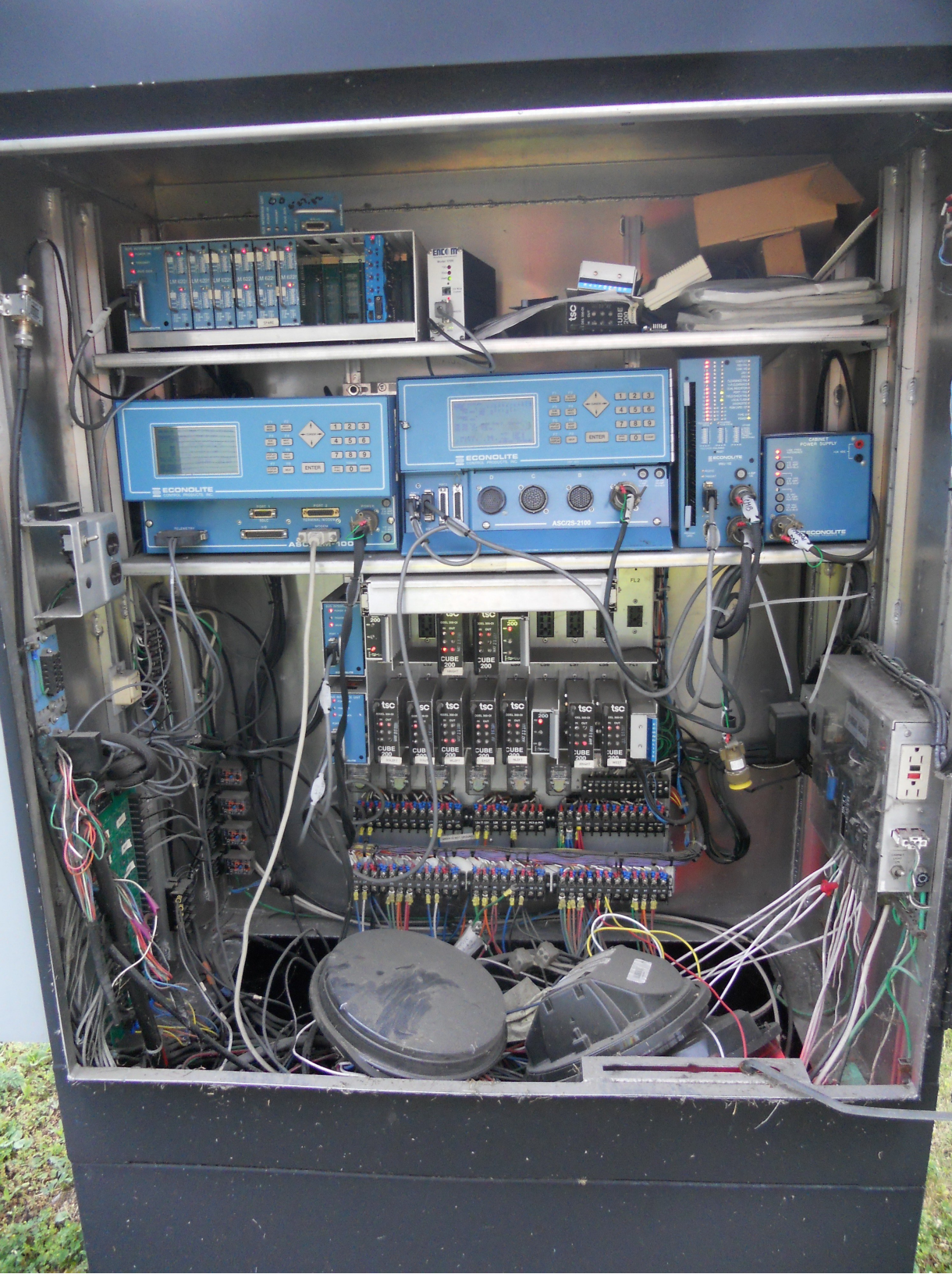
LS1 tsc MODEL 200-OI IN OUT MAY 22 2001 CUBE 200 SLEFT
LS2 tsc MODEL 200-OI IN OUT MAY 22 2001 CUBE 200 SOUT
LS3 tsc MODEL 200-OI IN OUT MAY 22 2001 CUBE 200 WLEFT
LS4 tsc MODEL 200-OI IN OUT MAY 22 2001 CUBE 200 EAST
LS5 tsc MODEL 200-OI IN OUT MAY 22 2001 CUBE 200 WLEFT
LS6 tsc MODEL 200-OI IN OUT MAY 22 2001 CUBE 200
LS7 tsc MODEL 200-OI IN OUT MAY 22 2001 CUBE 200 SLEFT
LS8 tsc MODEL 200-OI IN OUT MAY 22 2001 CUBE 200 WEST
FL1

PC1
PC2
PC3
PC4
100 101 102 103 104 105 106 107 108 109 110 111 112 113 114 115 116 117 118 119 120 121 122 123 124 125 126 127 128 129 130 131 132 133 134 135 136 137 138 139 140 141 142 143 144 145 146 147 148 149 150 151 152 153 154 155 156 157 158 159 160 161 162 163 164 165 166 167 168 169 170 171 172 173 174 175 176 177 178 179 180 181 182 183 184 185 186 187 188 189 190 191 192 193 194 195 196 197 198 199 200

10 11 12 13 14 15 16 17 18 19 20 21 22 23 24 25 26 27 28 29 30 31 32 33 34 35 36 37 38 39 40 41 42 43 44 45 46 47 48 49 50 51 52 53 54 55 56 57 58 59 60 61 62 63 64 65 66 67 68 69 70 71 72 73 74 75 76 77 78 79 80 81 82 83 84 85 86 87 88 89 90 91 92 93 94 95 96 97 98 99 100

GREEN IS NOT GROUNDED

HESCO
LP 50



ABB

201 935

IN U.S.A.

*ACG011648784
11 648 784



SIGNALS



LIGHTING SERVICE DISCONNECT

⚡ DANGER
HAZARD OF ELECTRICAL SHOCK
OR BURN IF COVER REMOVED
SERVICE BY UTILITY
AUTHORIZED PERSONNEL ONLY
DO NOT PAINT OVER OR REMOVE THIS LABEL



ONLY | ONLY

No Parking

Bus Stop

Mobil
MOULSON



Mobil

ONLY

ONLY



stitched





LEFT TURN
YIELD
ON GREEN

NORTH EAST SOUTH
VERMONT VERMONT VERMONT
2A 2 2A
← ↑ →

TO
89
↑

EAST SOUTH WEST
VERMONT VERMONT VERMONT
2 2A 2
← ↑ →

TO
89
↑















TO CROSS
PUSH BUTTON

- ▶ STAY ON BOARD
WHEN ON
CROSSING LANE
- ▶ DON'T PUSH
WHEN CHILDREN
ARE ON BOARD
- ▶ PROCEED
WHEN RED BY
A SIGNAL LIGHT





TO CROSS
PUSH BUTTON

- WALK LIGHTS
FLASH FOR
CROSSING
- WALK LIGHTS
FLASH FOR
CROSSING
- WALK LIGHTS
FLASH FOR
CROSSING



TO CROSS
PUSH BUTTON

- PUSH BUTTON
- CROSS STREET
- CROSS STREET
- CROSS STREET









Mobil

Regular **3.64** 9/10
Special **3.79** 9/10
Super **3.94** 9/10

Shell

















☁

ONLY

ONLY

ONLY







TO CROSS
PUSH BUTTON
START CROSSING
WATCH FOR
TURNING CARS
DON'T START
FROM CROSSING
IF STAYED
FEELS TRAFFIC
STOPPED, DON'T
CROSS YET











UNION METAL KEY
10.2X34
55151
2001
UNION METAL CORPORATION





My Office
10000
10000
10000
10000

For Lease
10000
10000
10000
10000





TO CROSS
PUSH BUTTON

- START CROSSING
WATCH FOR
TURNING CARS
- DON'T START
PUSH BUTTONS
IF STARTED
- PEDESTRIANS
SHOULD NOT BE
IN CROSSWALK



TAFT
CORNERS



LEFT TURN ONLY

2-783



Mobil

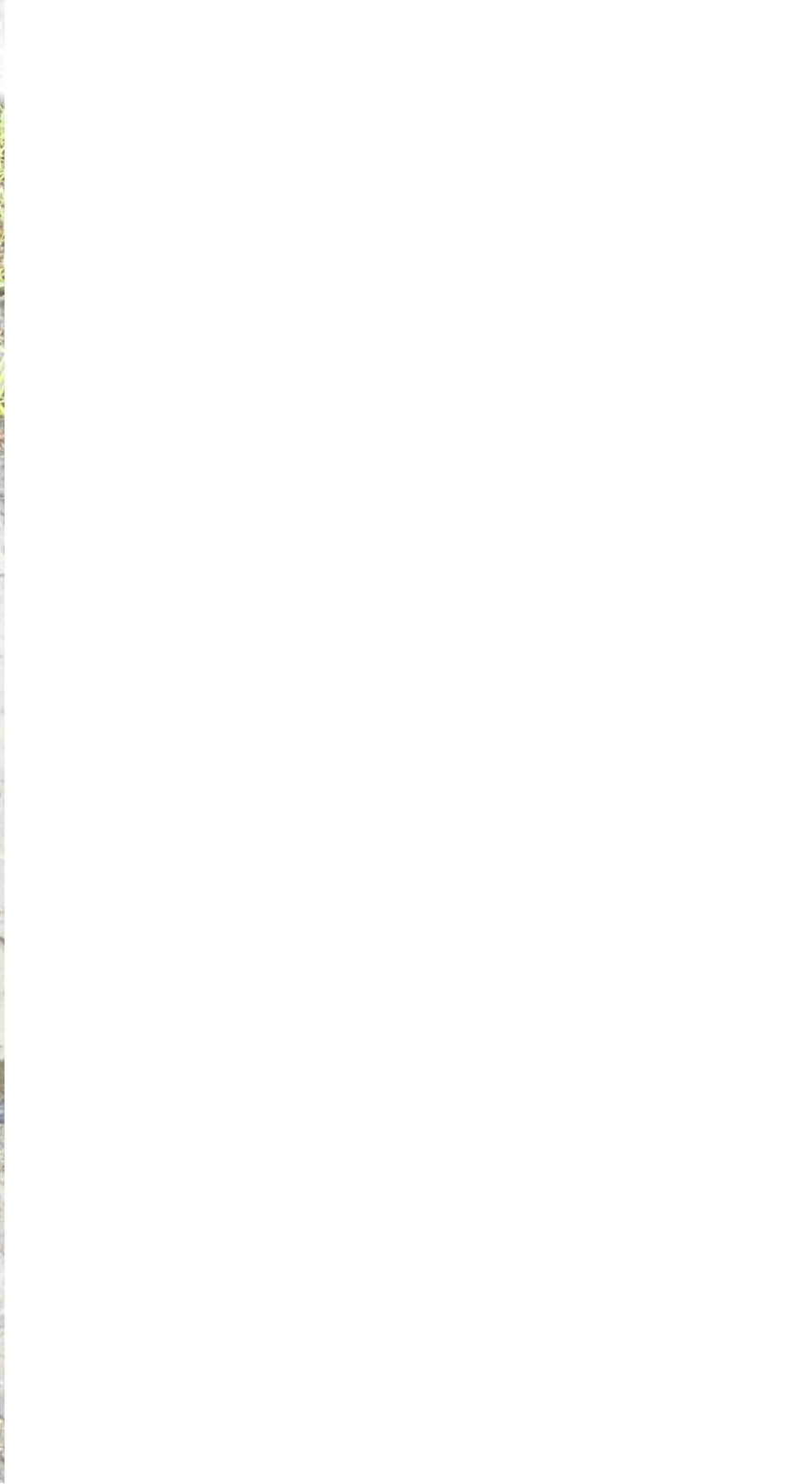
Regular 3.64
Special 3.79
Super 3.94

100
95
90
85
80
75
70
65
60
55
50
45
40
35
30
25
20
15
10
5
0

100
95
90
85
80
75
70
65
60
55
50
45
40
35
30
25
20
15
10
5
0







35-13.0X29"
35-10.0X34"
55KST
2001
UNION METAL CORPORATION



Coordination Patterns

```

-----
Pattern 1
Cycle Length . . . 84  COS . . . . . 111
Offset . . . . . 0
Vehicle Permissive . . [1] 0 [2] 0
Vehicle Perm 2 Displacement 0 Phase Reservice. . NO
Splits: Phase 1- 11 2- 36 3- 13 4- 24
          Phase 5- 16 6- 31 7- 11 8- 26
          Phase 9- 22 10- 0 11- 0 12- 0 Split Sum: 0
Split Extension/Ring [1] 0 [2] 0
Split Demand Pattern [1] 0 [2] 0
XRT Pattern. . . 0
Phase Number: 1 2 3 4 5 6 7 8 9 10 11 12
Coord Phases . . . X . . . X . . . . .
Veh Recall . . . . . . . . . . . . .
Veh Max Recall . . . . . . . . . . . . .
Ped Recall . . . . . . . . . . . . .
Veh Omit . . . . . . . . . . . . .
Alt Sequence . . A: . B: . C: . D: . E: . F: .
-----
    
```

```

-----
Pattern 2
Cycle Length . . . 88  COS . . . . . 211
Offset . . . . . 0
Vehicle Permissive . . [1] 0 [2] 0
Vehicle Perm 2 Displacement 0 Phase Reservice. . NO
Splits: Phase 1- 13 2- 37 3- 13 4- 25
          Phase 5- 14 6- 36 7- 11 8- 27
          Phase 9- 22 10- 0 11- 0 12- 0 Split Sum: 0
Split Extension/Ring [1] 0 [2] 0
Split Demand Pattern [1] 0 [2] 0
XRT Pattern. . . 0
Phase Number: 1 2 3 4 5 6 7 8 9 10 11 12
Coord Phases . . . X . . . X . . . . .
Veh Recall . . . . . . . . . . . . .
Veh Max Recall . . . . . . . . . . . . .
Ped Recall . . . . . . . . . . . . .
Veh Omit . . . . . . . . . . . . .
Alt Sequence . . A: . B: . C: . D: . E: . F: .
-----
    
```

```

-----
Pattern 3
Cycle Length . . . 96  COS . . . . . 311
Offset . . . . . 0
Vehicle Permissive . . [1] 0 [2] 0
Vehicle Perm 2 Displacement 0 Phase Reservice. . NO
Splits: Phase 1- 14 2- 36 3- 12 4- 34
          Phase 5- 18 6- 32 7- 11 8- 35
          Phase 9- 22 10- 0 11- 0 12- 0 Split Sum: 0
Split Extension/Ring [1] 0 [2] 0
Split Demand Pattern [1] 0 [2] 0
XRT Pattern. . . 0
Phase Number: 1 2 3 4 5 6 7 8 9 10 11 12
Coord Phases . . . X . . . X . . . . .
Veh Recall . . . . . . . . . . . . .
Veh Max Recall . . . . . . . . . . . . .
Ped Recall . . . . . . . . . . . . .
Veh Omit . . . . . . . . . . . . .
Alt Sequence . . A: . B: . C: . D: . E: . F: .
-----
    
```

Coordination Patterns

Pattern 4

Cycle Length . . . 90 COS 411
 Offset 0
 Vehicle Permissive . . [1] 0 [2] 0
 Vehicle Perm 2 Displacement 0 Phase Reservice. . NO
 Splits: Phase 1- 14 2- 33 3- 14 4- 29
 Phase 5- 17 6- 33 7- 14 8- 29
 Phase 9- 0 10- 0 11- 0 12- 0 Split Sum: 0
 Split Extension/Ring [1] 0 [2] 0
 Split Demand Pattern [1] 0 [2] 0
 XRT Pattern. . . 0
 Phase Number: 1 2 3 4 5 6 7 8 9 10 11 12
 Coord Phases . . . X . . . X
 Veh Recall
 Veh Max Recall
 Ped Recall
 Veh Omit
 Alt Sequence . . A: . B: . C: . D: . E: . F: .

NIC Program Steps

Step	Program	Step Begins	Pattern	Override
1	1	0600	1	NO
2	1	1000	2	NO
3	1	1430	3	NO
4	1	1900	2	NO
5	1	2200	0	NO
6	2	0600	1	NO
7	2	0900	3	NO
8	2	2200	0	NO

TOD Program Steps

 Step 1 Program 1 Step Begins 0600

Flash. Dimming Enable.
 Red Rest Alt Veh Extension
 Spare 5. Det Log Enable.
 Spare 3. Spare 4
 Type 0 Dly Enable. . . Spare 2
 Det Diag Plan. . . . 0

	Phase Number											
	1	2	3	4	5	6	7	8	9	10	11	12
Max 2 Enable
Max 3 Enable
Veh Recall
Veh Max Recall	X	.	.	.	X
Ped Recall
Cond Service Inhibit.
Phase Omit
Special Function

Alt Sequence A B C D E F

Step 2 Program 1 Step Begins 1000

Flash. Dimming Enable.
 Red Rest Alt Veh Extension
 Spare 5. Det Log Enable.
 Spare 3. Spare 4
 Type 0 Dly Enable. . . Spare 2
 Det Diag Plan. . . . 0

	Phase Number											
	1	2	3	4	5	6	7	8	9	10	11	12
Max 2 Enable	X	X	X	X	X	X	X	X	X	.	.	.
Max 3 Enable
Veh Recall
Veh Max Recall	X	.	.	.	X
Ped Recall
Cond Service Inhibit.
Phase Omit
Special Function

Alt Sequence A B C D E F

TOD Program Steps

Step 3 Program 1 Step Begins 1430

Flash. Dimming Enable.
 Red Rest Alt Veh Extension
 Spare 5. Det Log Enable.
 Spare 3. Spare 4
 Type 0 Dly Enable. . . Spare 2
 Det Diag Plan. . . . 0

	Phase Number											
	1	2	3	4	5	6	7	8	9	10	11	12
Max 2 Enable
Max 3 Enable	X	X	X	X	X	X	X	X	X	.	.	.
Veh Recall
Veh Max Recall	X	.	.	.	X
Ped Recall
Cond Service Inhibit.
Phase Omit
Special Function

Alt Sequence A B C D E F

Step 4 Program 1 Step Begins 1900

Flash. Dimming Enable.
 Red Rest Alt Veh Extension
 Spare 5. Det Log Enable.
 Spare 3. Spare 4
 Type 0 Dly Enable. . . Spare 2
 Det Diag Plan. . . . 0

	Phase Number											
	1	2	3	4	5	6	7	8	9	10	11	12
Max 2 Enable	X	X	X	X	X	X	X	X	X	.	.	.
Max 3 Enable
Veh Recall	X	.	.	.	X
Veh Max Recall
Ped Recall
Cond Service Inhibit.
Phase Omit
Special Function

Alt Sequence A B C D E F

TOD Program Steps

Step 5 Program 1 Step Begins 2200

Flash. Dimming Enable.
Red Rest Alt Veh Extension
Spare 5. Det Log Enable.
Spare 3. Spare 4
Type 0 Dly Enable. . . Spare 2
Det Diag Plan. . . . 0

Table with 12 columns (Phase Number 1-12) and rows for Max 2 Enable, Max 3 Enable, Veh Recall, Veh Max Recall, Ped Recall, Cond Service Inhibit, Phase Omit, and Special Function.

Alt Sequence A B C D E F

Step 6 Program 2 Step Begins 0600

Flash. Dimming Enable.
Red Rest Alt Veh Extension
Spare 5. Det Log Enable.
Spare 3. Spare 4
Type 0 Dly Enable. . . Spare 2
Det Diag Plan. . . . 0

Table with 12 columns (Phase Number 1-12) and rows for Max 2 Enable, Max 3 Enable, Veh Recall, Veh Max Recall, Ped Recall, Cond Service Inhibit, Phase Omit, and Special Function.

Alt Sequence A B C D E F

TOD Program Steps

 Step 7 Program 2 Step Begins 0900

Flash. Dimming Enable.
 Red Rest Alt Veh Extension
 Spare 5. Det Log Enable.
 Spare 3. Spare 4
 Type 0 Dly Enable. . . Spare 2
 Det Diag Plan. . . . 0

	Phase Number											
	1	2	3	4	5	6	7	8	9	10	11	12
Max 2 Enable
Max 3 Enable	X	X	X	X	X	X	X	X	X	.	.	.
Veh Recall
Veh Max Recall	X	.	.	.	X
Ped Recall
Cond Service Inhibit.
Phase Omit
Special Function

Alt Sequence A B C D E F

Step 8 Program 2 Step Begins 2200

Flash. Dimming Enable.
 Red Rest Alt Veh Extension
 Spare 5. Det Log Enable.
 Spare 3. Spare 4
 Type 0 Dly Enable. . . Spare 2
 Det Diag Plan. . . . 0

	Phase Number											
	1	2	3	4	5	6	7	8	9	10	11	12
Max 2 Enable
Max 3 Enable
Veh Recall
Veh Max Recall	X	.	.	.	X
Ped Recall
Cond Service Inhibit.
Phase Omit
Special Function

Alt Sequence A B C D E F
