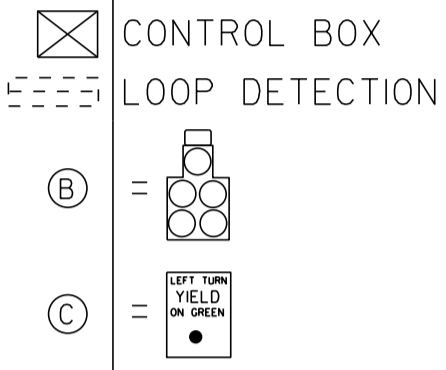
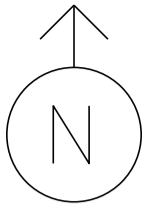


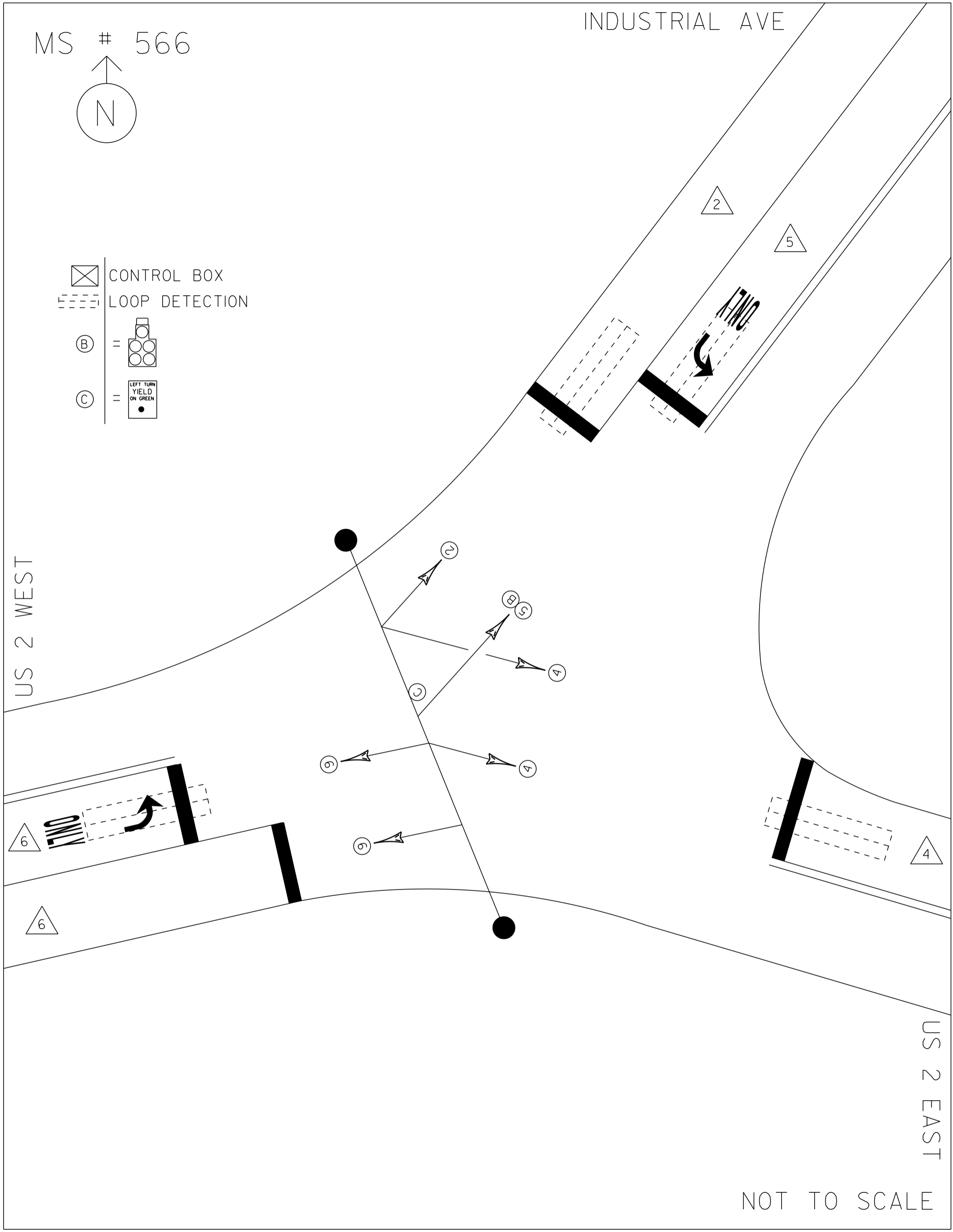
MS # 566

INDUSTRIAL AVE



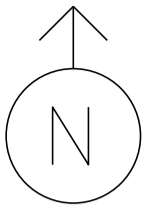
US 2 WEST

US 2 EAST



NOT TO SCALE

MS # 566



INDUSTRIAL AVE

12'

12'

12'

LANE LINE 120'

ONLY



STOP BAR 12'

STOP BAR 12'

US 2 WEST

12'

STOP BAR 12'

STOP BAR 15'

12'

ONLY



STOP BAR 12'

LANE LINE 110'

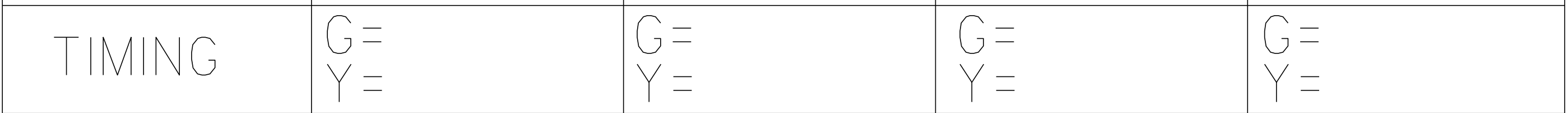
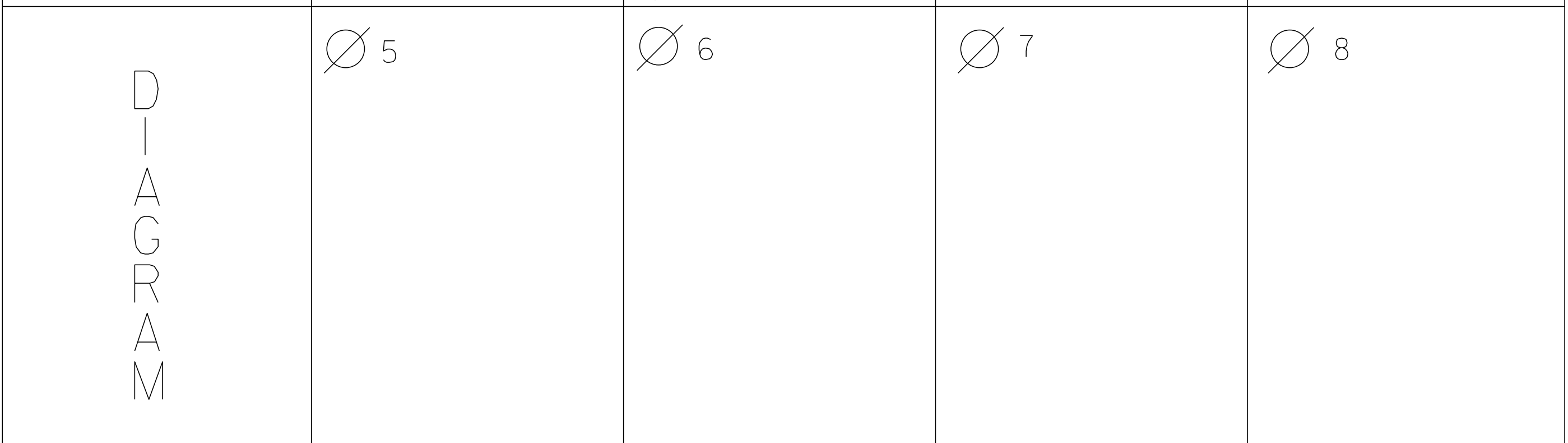
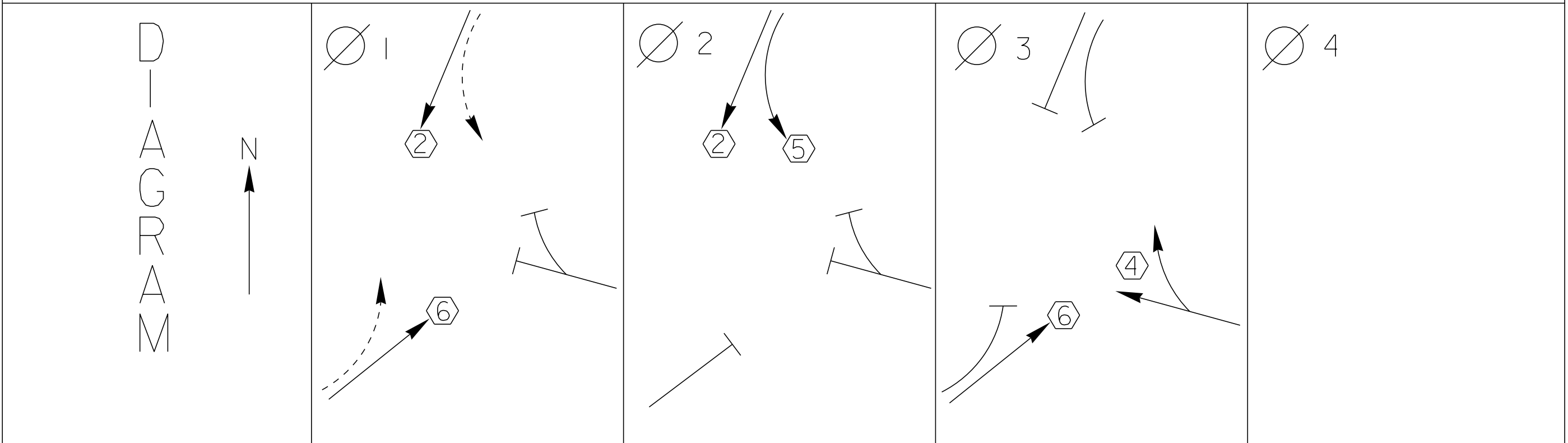
13'

12'

12'

US 2 EAST

NOT TO SCALE



CYCLE LENGTH, C= _____ S



WARNING

DO NOT OPERATE
CABINET WITHOUT
CONFLICT MONITOR UNIT

DANGER

115 VOLTS A.C.

CONTROLLE #
ON OFF

AUTO
FLASH

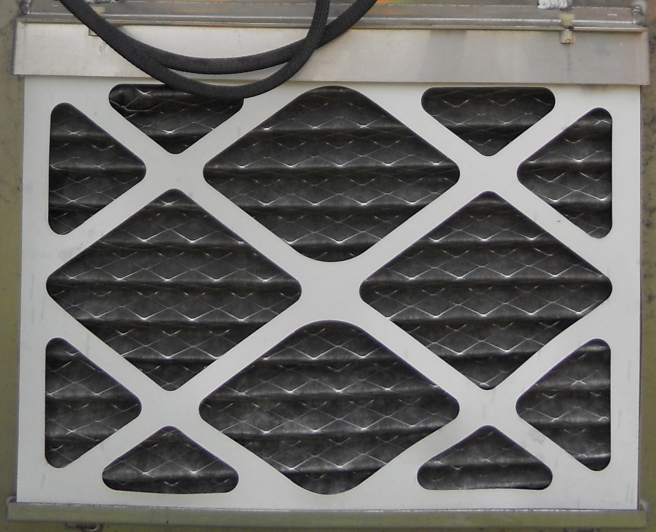
STOP
TIMING
AUTO
ON

VEH TEST SW'S

01/A	02/B	03/C	04/D
05	06	07	08
01/A	02/B	03/C	04/D
02	04	08	08

9

1848-44-14

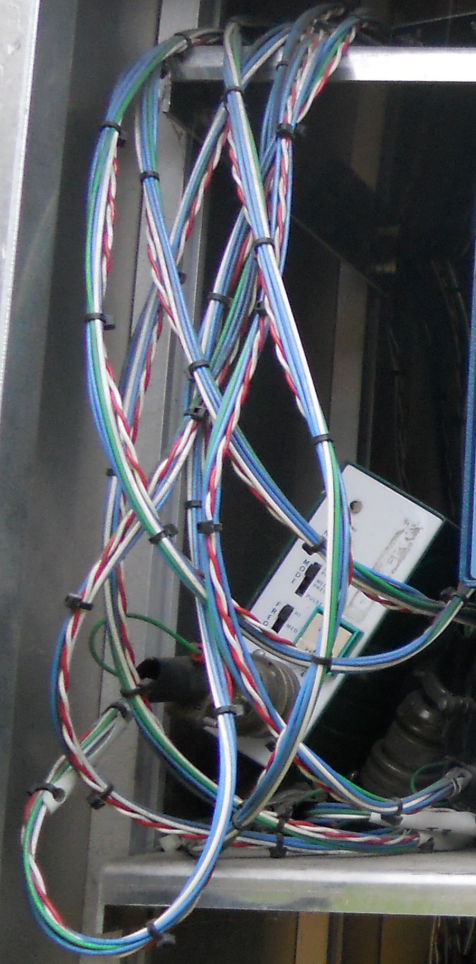


Panel with digital display and keypad. Display shows: RING STATUS (INTERVAL TIMING), PHASE STATUS (1-8), COORD STATUS. Keypad includes numeric keys 1-9, 0, CLEAR, and function keys F1-F6.

ECONOLITE

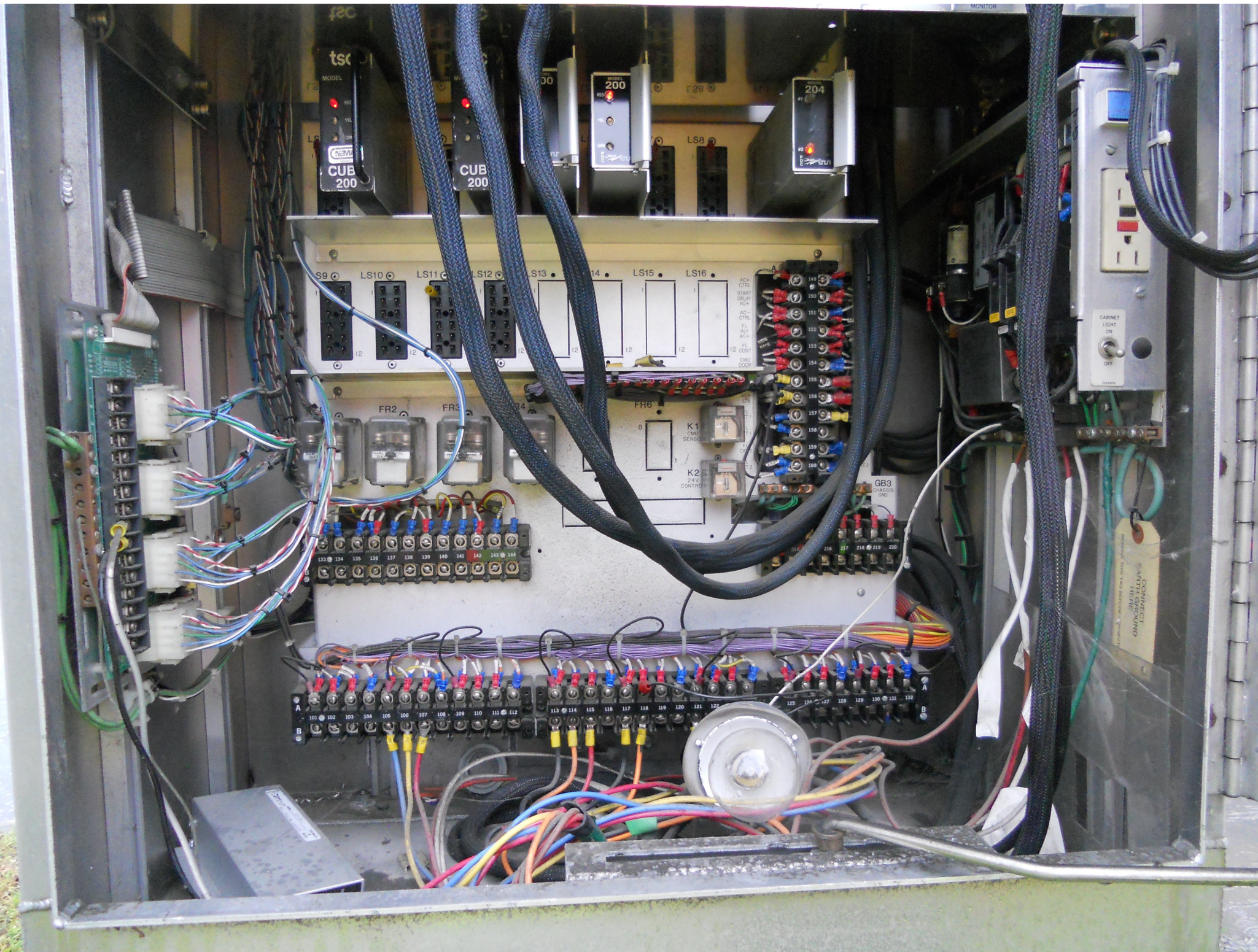
Panel with connectors and labels. Labels include: A, B, D, TELEPHONE, TELEMEMORY, AS9000 S/N 7690.

Panel with digital display showing 9:23 AM and various control buttons. Labels include: SSM 12LE 1J, SN 9102 102, ECONOLITE CONTROL PRODUCTS, 910.



Panel with multiple modules and labels. Labels include: MODEL 200, MODEL 204, CUE 200, LS11, LS13, LS14, LS15, LS16, AC-CTRL, START DELAY, ACT, FL RLY, AC-FL, FL CONT, CMU DOOR.

CONTROLLER CONFLICT MONITOR



tsc
MODEL
CUB
200

CUB
200

MODEL
200

204

S9 LS10 LS11 LS12 LS13 LS14 LS15 LS16
12 12 12 12 12 12 12 12

AC-
CTRL
START
DELAY
ACF
AC-
CTRL
FL
REV
ACF
FL
ODT
DUM
DOOR

FR2 FR3 FR4 FR6

K1
CMU
SENSORS
K2
24V
CONTROL

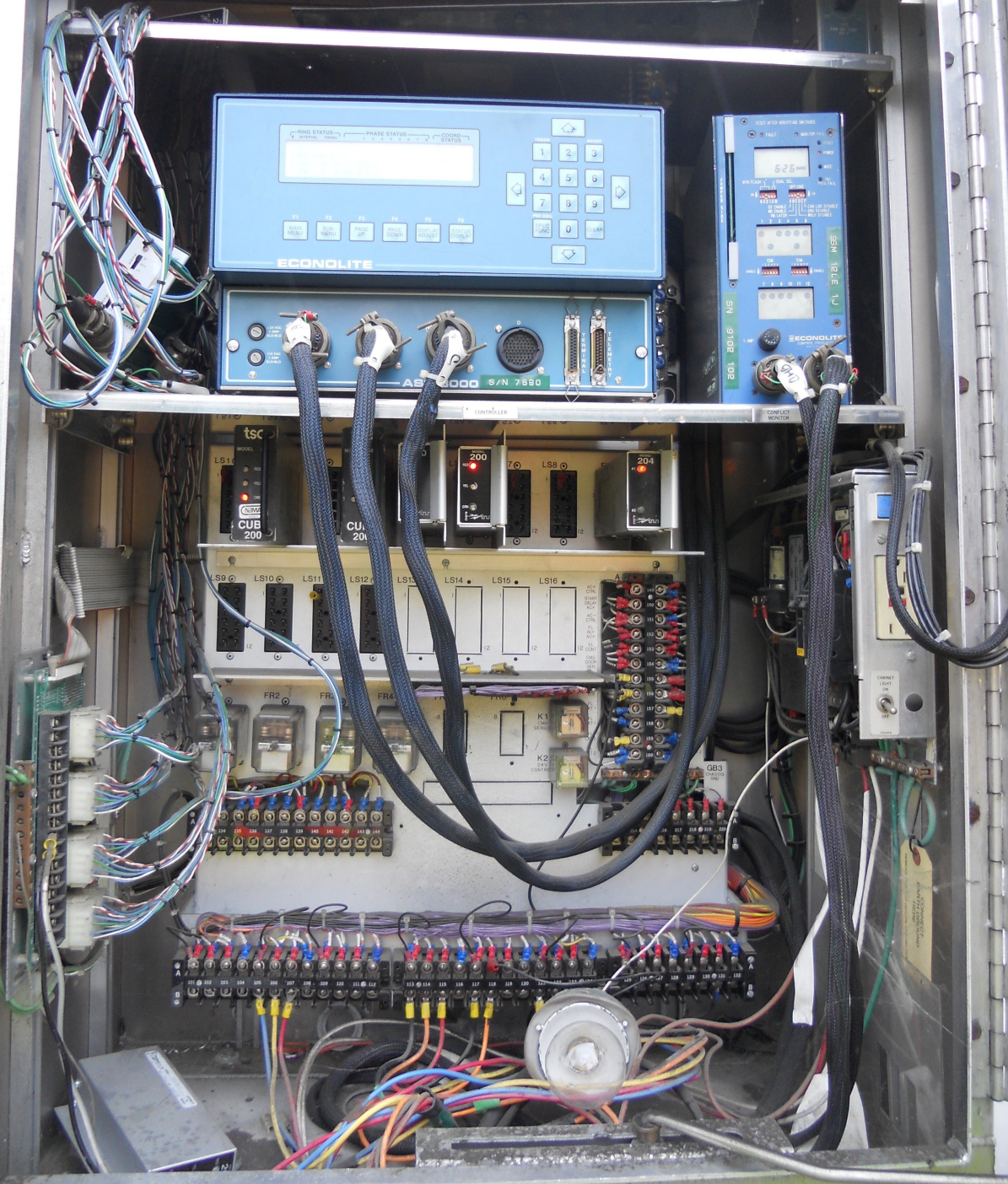
GB3
24V
DND

113 114 115 116 117 118 119 120 121 122

A 101 102 103 104 105 106 107 108 109 110 111 112
B 113 114 115 116 117 118 119 120 121 122
125 126 127 128 129 130 131 132

CABINET
LIGHT
ON
OFF

CONNECT
TO EARTH
GROUNDING







WILKINSON RD

FOR LEASE
CALL 508-548-1234

LEFT TURN
VEHICLES
YIELD TO
THRU TRAFFIC

ONLY





LEFT TURN
YIELD
ON GREEN







OFFICE AND...









WILLISTON ROAD

INDUSTRIAL AVE





LEFT TURN
YIELD
ON GREEN

HAZARD OF ELECTRICAL
SHOCK OR BURN
SERVICE BY UTILITY
AUTHORIZED PERSONNEL ONLY
DO NOT PAINT OVER OR REMOVE THIS LABEL
ABB MFG. CO. 01904 010111-02 10/01/01

ABB

KILOWATTHOURS

01M5126001

SINGLE-STAR WATTHOUR METER
TYPE ART. 6 85700900000

FORM 2S 200 CL 240 V 3 W 80 HZ TA 30 K_h 7.2

189 311

MADE U.S.A.

ACG099267517

99 267 5-7

0236425
SMP

HAZARD OF ELECTRICAL
SHOCK OR BURN
SERVICE BY UTILITY
AUTHORIZED PERSONNEL ONLY
DO NOT PAINT OVER OR REMOVE THIS LABEL
ABB MFG. CO. 01904 010111-02 10/01/01

Timing Data

	Phase							
	1	2	3	4	5	6	7	8
Direction								
Minimum Green	0	5	0	5	5	5	0	0
Walk	0	0	0	0	0	0	0	0
Ped Clearance	0	0	0	0	0	0	0	0
Vehicle Extension	0.0	2.0	0.0	2.0	2.0	2.0	0.0	0.0
Max Extension	0	0	0	0	0	0	0	0
Max 1	0	45	0	27	5	34	0	0
Max 2	0	42	0	34	6	30	0	0
Max 3	0	52	0	32	8	38	0	0
Yellow Change	4.0	4.0	4.0	4.0	4.0	4.0	4.0	4.0
Red Clearance	2.0	2.0	2.0	2.0	2.0	2.0	0.0	0.0
Red Revert	2.0	2.0	2.0	2.0	2.0	2.0	2.0	2.0
Actuations B4 Init	0	0	0	0	0	0	0	0
Seconds/Actuation	0.2	0.0	0.0	0.0	0.0	0.0	0.0	0.0
Max Initial	0	0	0	0	0	0	0	0
Time B4 Reduction	0	0	0	0	0	128	0	0
Cars Waiting	0	0	0	0	0	0	0	0
Time To Reduce	4	0	0	0	0	0	0	0
Minimum Gap	0.0	0.0	0.0	0.0	0.0	0.0	0.0	0.0
Cond Serv Min Green	0	2	8	0	0	0	0	0

NIC Program Data

```

-----
Step No.  Pgm Time Cycle Offset Split Flash Dim Max2 Max3 Sp Functions
              1 2 3 4
  1      1 0600  1    1    1    .    .    .    .    .    .    .
  2      1 1000  2    1    1    .    .    X    .    .    .    .
  3      1 1430  3    1    1    .    .    .    X    .    .    .
  4      1 1900  2    1    1    .    .    X    .    .    .    .
  5      1 2200  0    0    1    X    .    .    .    .    .    .
  6      2 0600  1    1    1    .    .    .    .    .    .    .
  7      2 0900  3    1    1    .    .    .    X    .    .    .
  8      2 2200  0    0    1    X    .    .    .    .    .    .
  9      3 0500  1    1    1    .    .    .    .    .    .    .
 10     3 0900  2    1    1    .    .    X    .    .    .    .
 11     3 1330  3    1    1    .    .    .    X    .    .    .
 12     3 1800  2    1    1    .    .    X    .    .    .    .
 13     3 2100  0    0    1    X    .    .    .    .    .    .
 14     4 0500  1    1    1    .    .    .    .    .    .    .
 15     4 0800  3    1    1    .    .    .    X    .    .    .
 16     4 2100  0    0    1    X    .    .    .    .    .    .
 17     5 0600  1    1    1    .    .    .    .    .    .    .
 18     5 1100  2    1    1    .    .    X    .    .    .    .
 19     5 1530  3    1    1    .    .    .    X    .    .    .
 20     5 2000  2    1    1    .    .    X    .    .    .    .
 21     5 2300  0    0    1    X    .    .    .    .    .    .
 22     6 0600  1    1    1    .    .    .    .    .    .    .
 23     6 1000  3    1    1    .    .    .    X    .    .    .
 24     6 2300  0    0    1    X    .    .    .    .    .    .

```