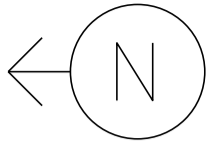


MS # 559



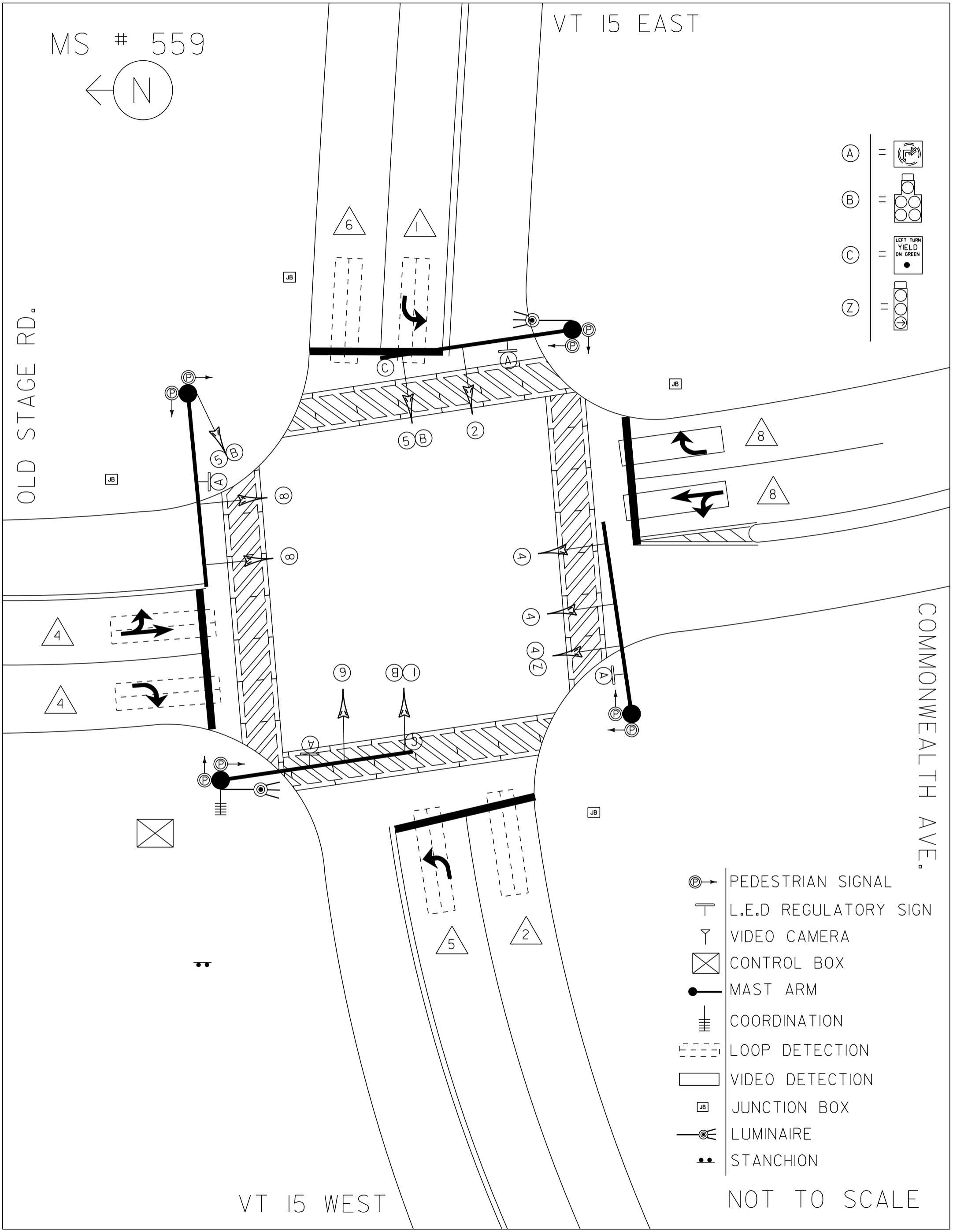
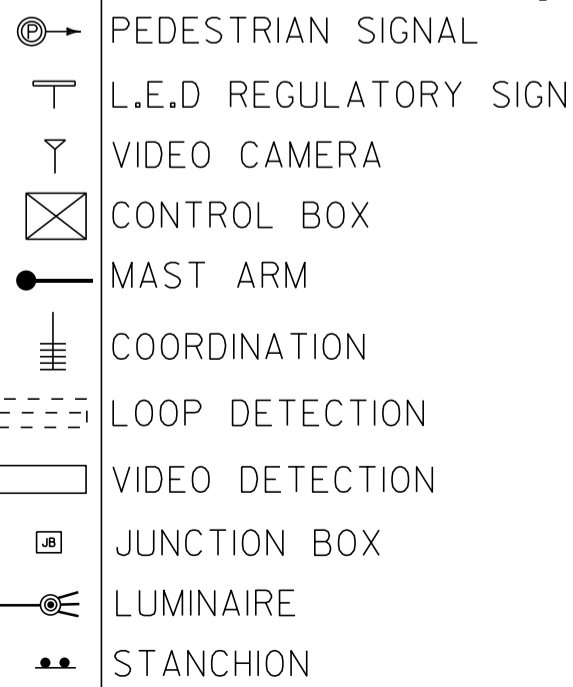
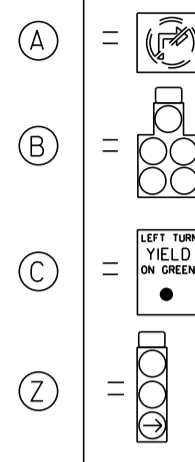
VT 15 EAST

OLD STAGE RD.

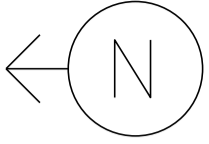
COMMONWEALTH AVE.

VT 15 WEST

NOT TO SCALE



MS # 559



VT 15 EAST

OLD STAGE RD.

12'

10'

11'

LANE LINE 150'



STOP BAR 24'

CROSSWALK 68'

STOP BAR 26'

12'

LANE LINE 60'

11'



12'

12'

12'

LANE LINE 205'



STOP BAR 26'

CROSSWALK 70'

CROSSWALK 73'

CROSSWALK 60'

STOP BAR 23'

COMMONWEALTH AVE.



LANE LINE 230'

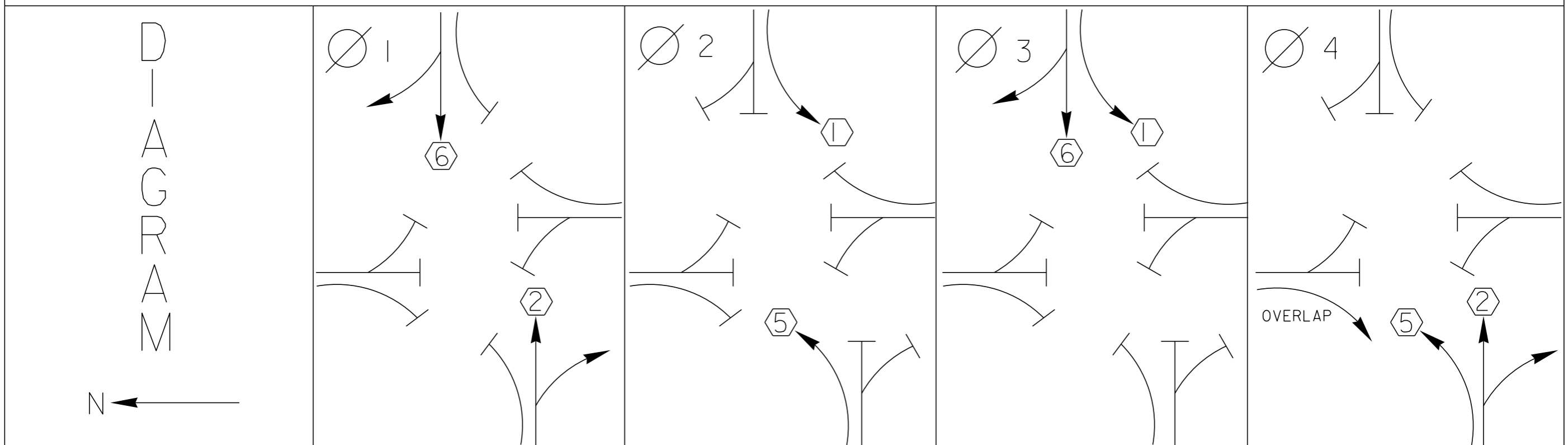
12'

11'

11'

VT 15 WEST

NOT TO SCALE



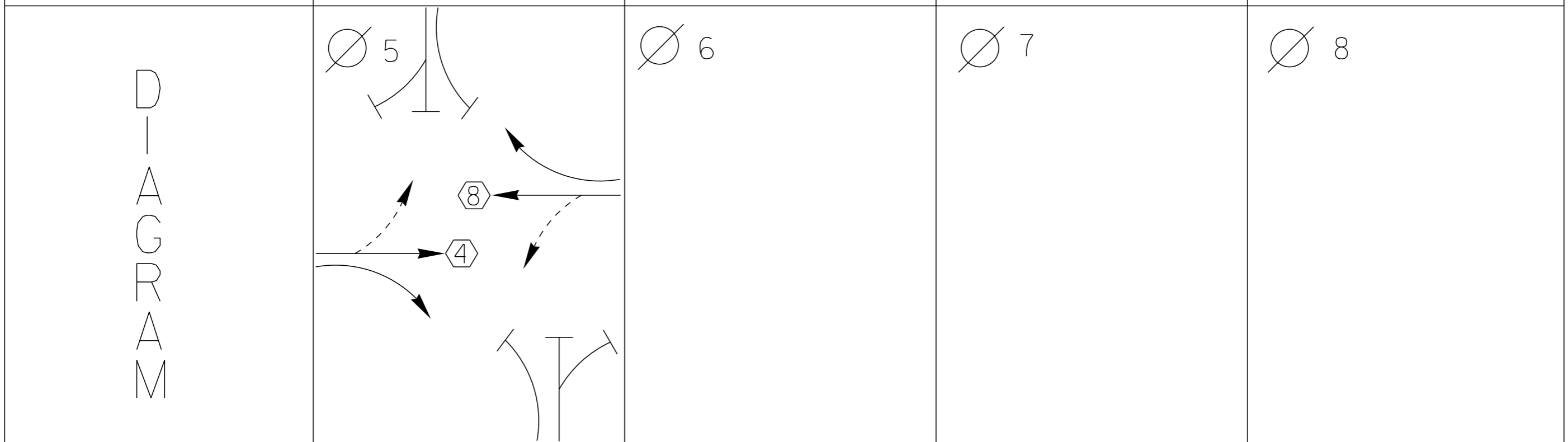
TIMING

G =  
Y =

G =  
Y =

G =  
Y =

G =  
Y =



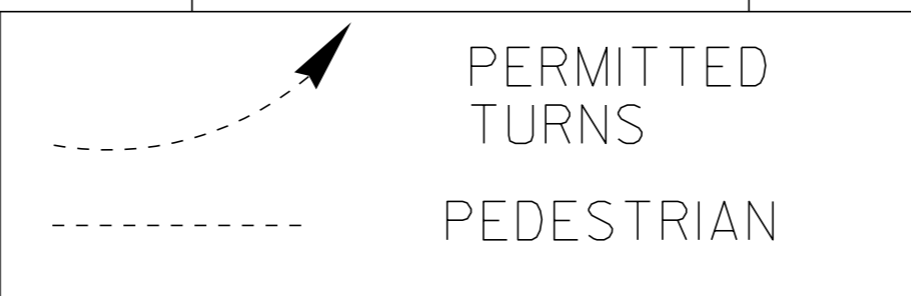
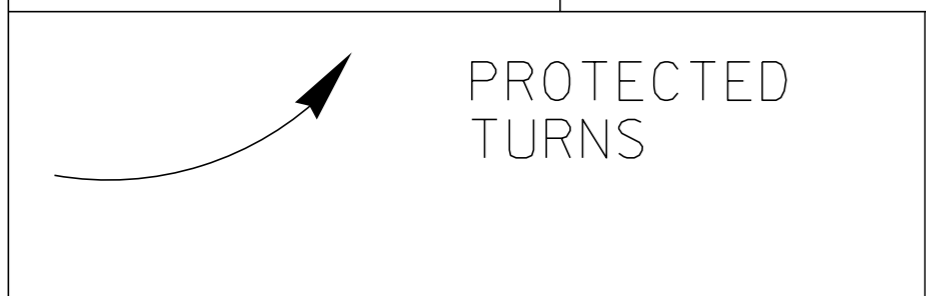
TIMING

G =  
Y =

G =  
Y =

G =  
Y =

G =  
Y =



CYCLE LENGTH, C = \_\_\_\_\_ S



GTG

PROPERTY OF :  
VT. AGENCY OF TRANS.  
MAINTENANCE DIV.

IN EMERGENCY CALL :  
DIST. TRANS. OFFICE

655-1580

NIGHTS & WEEKENDS : 878-7111

INTERSECTION NO. MS-559

**DANGER**

115 VOLTS A.C.

**WARNING**

DO NOT OPERATE  
CABINET WITHOUT  
CMU / MMU

344122

Control panel with three rotary switches and a blank label.

- Switch 1: OFF, ON
- Switch 2: AUTO, MAN
- Switch 3: STOP, RUN

SECONDOLITE

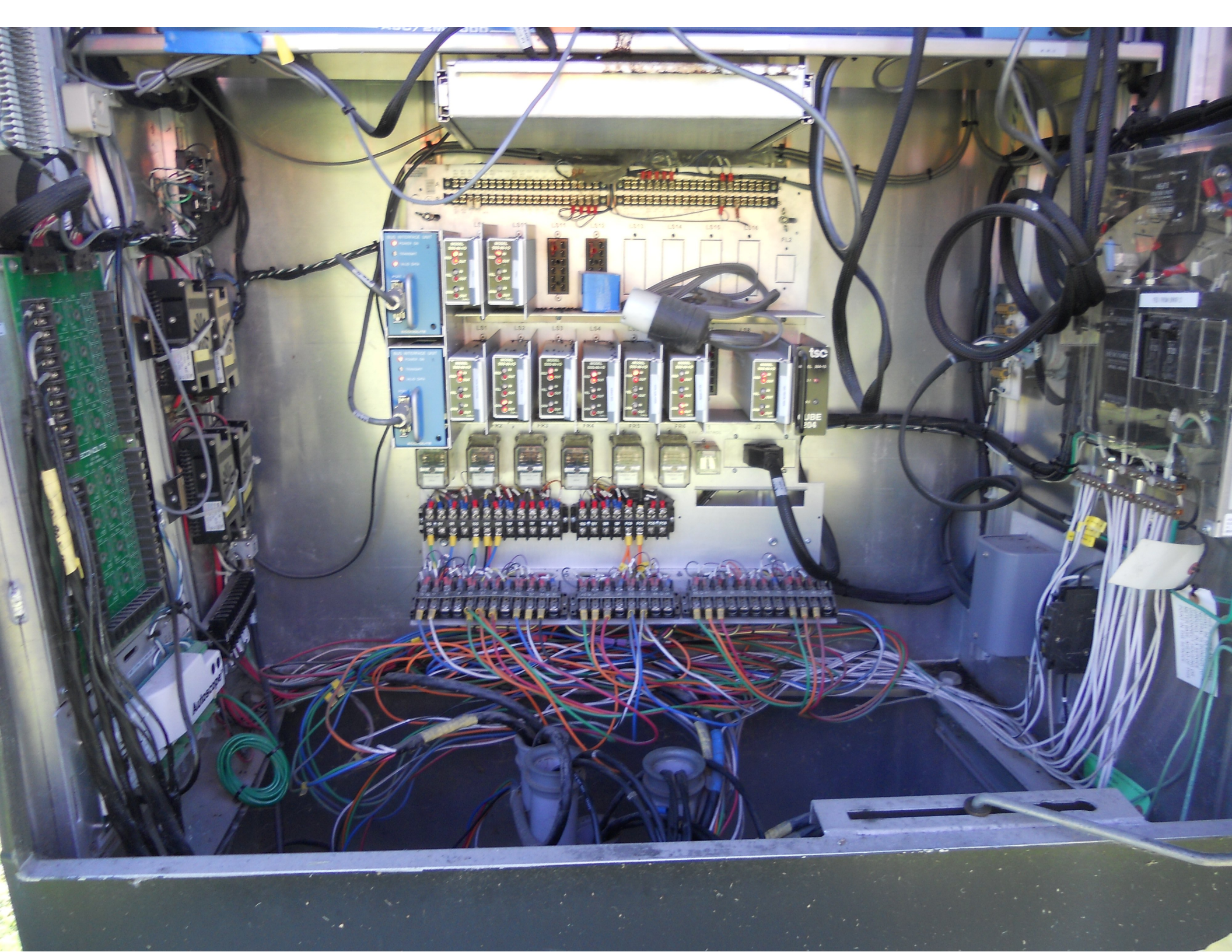
Technical manual and maintenance kit in a clear plastic bag.

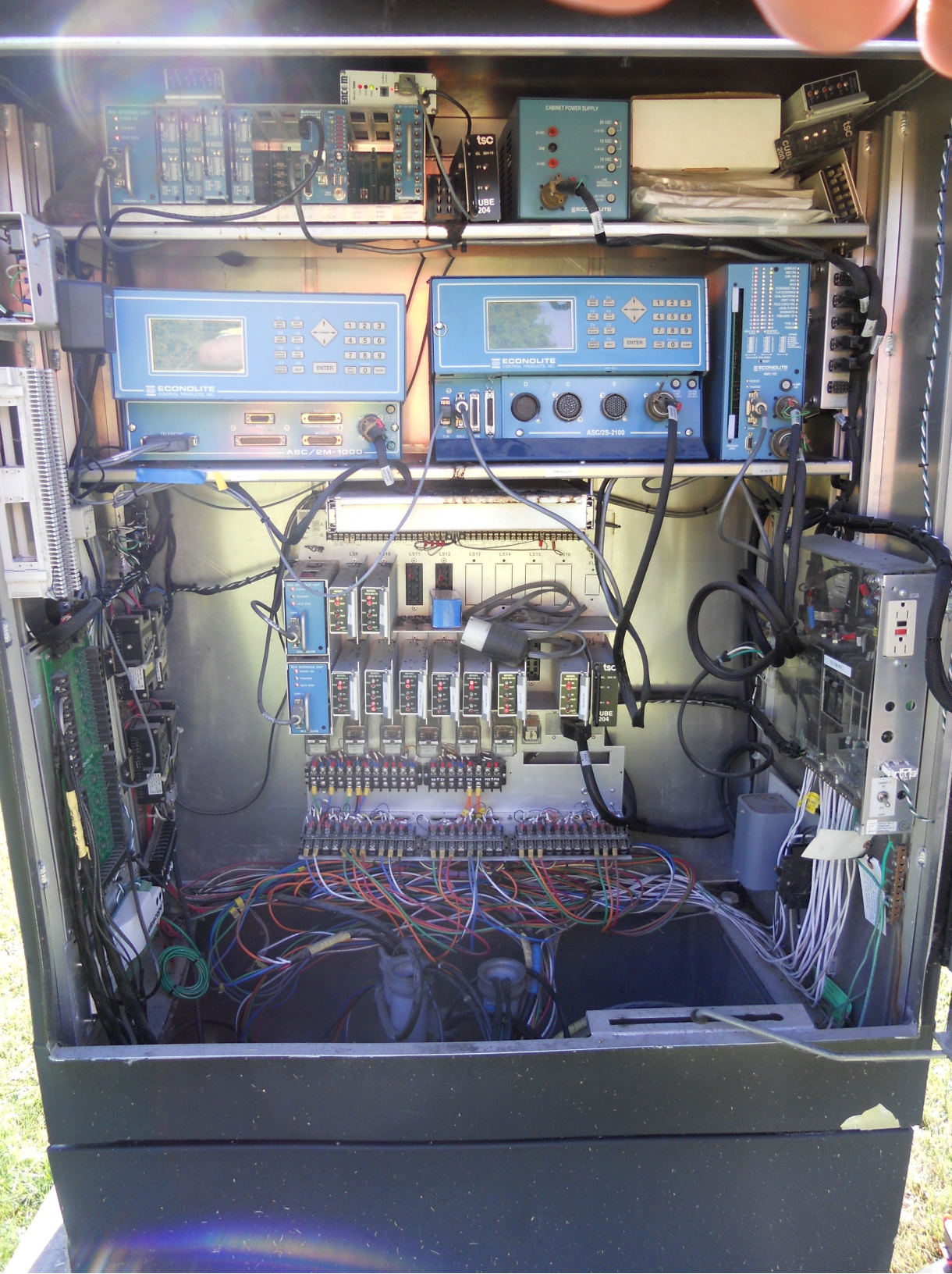
- Manual: Includes a table of contents and technical diagrams.
- Maintenance kit: Includes a green and yellow bag and a red tool.

White plastic ventilation grille with a diamond pattern.









PELIGRO DE DESCARGA ELECTRICA O QUEMADURA  
DANGER OF ELECTRICAL SHOCK OR BURNING  
ELECTRICAL WORK MUST BE DONE BY A QUALIFIED  
ELECTRICIAN OR PERSON TRAINED IN ELECTRICAL  
NO OPENE E' CERRA NI TIENE UN BARRA PROTECTORA

ELSTER

KILOWATTHOURS

ELSTER SINGLE-STATOR WATTHOUR METER  
TYPE AB1 S 5570020GSE  
FORM 2S 200 CL 240 V 2 W 50 Hz TA 30 Kh 7.2  
G.M.P. MADE IN U.S.A.  
019 657  
\*ACC020419505  
20 410 538

MILBANK  
TYPE 3R ENCLOSURE

MILBANK

CIRCUIT BREAKERS UNDER FLAP  
NO FUSES IN BOX  
DO NOT BREAK SEAL

DAVARHISHCH / SPECIAL INSTRUCTIONS  
DANGER OF ELECTRICAL SHOCK OR BURNING  
ELECTRICAL WORK MUST BE DONE BY A QUALIFIED  
ELECTRICIAN OR PERSON TRAINED IN ELECTRICAL  
NO OPENE E' CERRA NI TIENE UN BARRA PROTECTORA

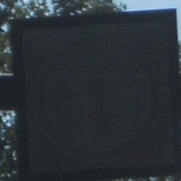








LEFT TURN  
YIELD  
ON GREEN









TO CROSS  
PUSH BUTTON

START CROSSING  
WATCH FOR  
TURNING CARS

DON'T START  
FINISH CROSSING  
IF STARTED

PEDESTRIANS  
SHOULD NOT BE  
IN CROSSWALK

OLD STAGE RD

0150  
0406  
0414









55KSI 04  
POLE 18 11.5 32'0"  
ARM 18 9.0 40'0"  
UNION METAL CORPORATION









LEGAL LOAD  
LIMIT  
24,000  
POUNDS







 **START CROSSING**  
Watch For Vehicles

 **DON'T START**  
Finish Crossing  
If Started

 **TIME REMAINING**  
To Finish Crossing

 **DON'T CROSS**

 **PUSH BUTTON**  
TO CROSS







5000 01  
POLE 18 1/2" Ø 20' 0"  
ASTM A500 33' 0"  
UNION METAL CORPORATION

55K9 04  
POLE.18 20'0"  
ARM.12 34'0"  
UNION METAL CORPORATION





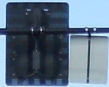
ONLY



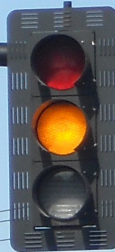
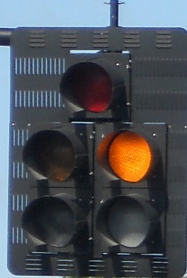
ONLY



Commonwealth



LEFT TURN  
YIELD  
ON GREEN







NET BANK  
FREE  
PERSONAL  
CHECKING  
COME IN  
TODAY

NET BANK

Commonwealth Ave







LEFT TURN  
YIELD  
ON GREEN

A traffic light assembly mounted on a black horizontal arm. From left to right: a white rectangular sign with the text "LEFT TURN YIELD ON GREEN" and a green circle; a vertical traffic light with the red light illuminated; and a square sign with a white background and a black arrow pointing right.

A tall black utility pole stands on the right side of the road. At the top, a street light fixture is mounted on a curved arm. Lower down, a red hand symbol pedestrian crossing sign is attached to the pole. The pole also supports several power lines.

OLD STAGE RD

A line of vehicles is stopped at the traffic light. From left to right, there is a white GMC SUV, a dark SUV, a silver sedan, and a dark sedan. A red fire truck is partially visible behind the silver sedan.

The front right corner of a silver SUV is visible, showing the front wheel and headlight.







ONLY

↑  
↙ | ↘  
ONLY



RIGHT LANE  
MUST  
TURN RIGHT

STOP













OLD STAGE RD



01'50  
0406  
04,14








55K  
POLE #18  
ARM #12  
UNION METAL






 Vermont 15 & Old Stage Rd, Essex, VT 05452, USA




© 2012 Google

Google earth

Imagery Date: 5/19/2012  1999

44°30'37.06" N 73°05'01.23" W elev 521 ft

Eye alt 921 ft 





## Coordination Patterns

-----  
Pattern 1

Cycle Length . . . 80 COS . . . . . 101  
 Offset . . . . . 0  
 Vehicle Permissive . . [1] 0 [2] 0  
 Vehicle Perm 2 Displacement 0 Phase Reservice. . NO  
 Splits: Phase 1- 14 2- 30 3- 0 4- 16  
           Phase 5- 14 6- 30 7- 0 8- 16  
           Phase 9- 20 10- 0 11- 0 12- 0 Split Sum: 0  
 Split Extension/Ring [1] 0 [2] 0  
 Split Demand Pattern [1] 0 [2] 0  
 XRT Pattern. . . 0  
   Phase Number: 1 2 3 4 5 6 7 8 9 10 11 12  
 Coord Phases . . . X . . . X . . . . .  
 Veh Recall . . . . .  
 Veh Max Recall . . . . .  
 Ped Recall . . . . .  
 Veh Omit . . . . .  
 Alt Sequence . . A: . B: . C: . D: . E: . F: .

-----  
Pattern 2

Cycle Length . . 120 COS . . . . . 211  
 Offset . . . . . 0  
 Vehicle Permissive . . [1] 0 [2] 0  
 Vehicle Perm 2 Displacement 0 Phase Reservice. . NO  
 Splits: Phase 1- 16 2- 60 3- 0 4- 24  
           Phase 5- 16 6- 60 7- 0 8- 24  
           Phase 9- 20 10- 0 11- 0 12- 0 Split Sum: 0  
 Split Extension/Ring [1] 0 [2] 0  
 Split Demand Pattern [1] 0 [2] 0  
 XRT Pattern. . . 0  
   Phase Number: 1 2 3 4 5 6 7 8 9 10 11 12  
 Coord Phases . . . X . . . X . . . . .  
 Veh Recall . . . . .  
 Veh Max Recall . . . . .  
 Ped Recall . . . . .  
 Veh Omit . . . . .  
 Alt Sequence . . A: . B: . C: . D: . E: . F: .

-----  
Pattern 3

Cycle Length . . 120 COS . . . . . 311  
 Offset . . . . . 0  
 Vehicle Permissive . . [1] 0 [2] 0  
 Vehicle Perm 2 Displacement 0 Phase Reservice. . NO  
 Splits: Phase 1- 21 2- 49 3- 0 4- 30  
           Phase 5- 21 6- 49 7- 0 8- 30  
           Phase 9- 20 10- 0 11- 0 12- 0 Split Sum: 0  
 Split Extension/Ring [1] 0 [2] 0  
 Split Demand Pattern [1] 0 [2] 0  
 XRT Pattern. . . 0  
   Phase Number: 1 2 3 4 5 6 7 8 9 10 11 12  
 Coord Phases . . . X . . . X . . . . .  
 Veh Recall . . . . .  
 Veh Max Recall . . . . .  
 Ped Recall . . . . .  
 Veh Omit . . . . .  
 Alt Sequence . . A: . B: . C: . D: . E: . F: .



NIC Program Steps

-----

Step	Program	Step Begins	Pattern	Override
1	1	0600	2	NO
2	1	0900	0	YES
3	1	1500	3	NO
4	1	1800	0	YES
5	2	0000	0	YES

TOD Program Steps

-----

Step 1            Program 1            Step Begins    0600

Flash. . . . . Dimming Enable. . . . .  
 Red Rest . . . . . Alt Veh Extension . . . . .  
 Spare 5. . . . . Det Log Enable. . . . .  
 Spare 3. . . . . Spare 4 . . . . .  
 Type 0 Dly Enable. . . Spare 2 . . . . .  
 Det Diag Plan. . . . 0

Phase Number

	1	2	3	4	5	6	7	8	9	10	11	12
Max 2 Enable . . . . .	X	X	.	X	X	X	.	X	.	.	.	.
Max 3 Enable . . . . .	.	.	.	.	.	.	.	.	.	.	.	.
Veh Recall . . . . .	.	.	.	.	.	.	.	.	.	.	.	.
Veh Max Recall . . . . .	.	.	.	.	.	.	.	.	.	.	.	.
Ped Recall . . . . .	.	.	.	.	.	.	.	.	.	.	.	.
Cond Service Inhibit. . . . .	.	.	.	.	.	.	.	.	.	.	.	.
Phase Omit . . . . .	.	.	.	.	.	.	.	.	.	.	.	.
Special Function . . . . .	.	.	.	.	.	.	.	.	.	.	.	.

A    B    C    D    E    F

Alt Sequence . . . . .

-----

Step 2            Program 1            Step Begins    0900

Flash. . . . . Dimming Enable. . . . .  
 Red Rest . . . . . Alt Veh Extension . . . . .  
 Spare 5. . . . . Det Log Enable. . . . .  
 Spare 3. . . . . Spare 4 . . . . .  
 Type 0 Dly Enable. . . Spare 2 . . . . .  
 Det Diag Plan. . . . 0

Phase Number

	1	2	3	4	5	6	7	8	9	10	11	12
Max 2 Enable . . . . .	.	.	.	.	.	.	.	.	.	.	.	.
Max 3 Enable . . . . .	.	.	.	.	.	.	.	.	.	.	.	.
Veh Recall . . . . .	.	.	.	.	.	.	.	.	.	.	.	.
Veh Max Recall . . . . .	.	.	.	.	.	.	.	.	.	.	.	.
Ped Recall . . . . .	.	.	.	.	.	.	.	.	.	.	.	.
Cond Service Inhibit. . . . .	.	.	.	.	.	.	.	.	.	.	.	.
Phase Omit . . . . .	.	.	.	.	.	.	.	.	.	.	.	.
Special Function . . . . .	.	.	.	.	.	.	.	.	.	.	.	.

A    B    C    D    E    F

Alt Sequence . . . . .

-----

TOD Program Steps

-----  
 Step 3            Program 1            Step Begins    1500

Flash. . . . . Dimming Enable. . . . .  
 Red Rest . . . . . Alt Veh Extension . . . . .  
 Spare 5. . . . . Det Log Enable. . . . .  
 Spare 3. . . . . Spare 4 . . . . .  
 Type 0 Dly Enable. . . Spare 2 . . . . .  
 Det Diag Plan. . . . 0

Phase Number

	1	2	3	4	5	6	7	8	9	10	11	12
Max 2 Enable . . . . .	.	.	.	.	.	.	.	.	.	.	.	.
Max 3 Enable . . . . .	X	X	.	X	X	X	.	X	.	.	.	.
Veh Recall . . . . .	.	.	.	.	.	.	.	.	.	.	.	.
Veh Max Recall . . . . .	.	.	.	.	.	.	.	.	.	.	.	.
Ped Recall . . . . .	.	.	.	.	.	.	.	.	.	.	.	.
Cond Service Inhibit. . . . .	.	.	.	.	.	.	.	.	.	.	.	.
Phase Omit . . . . .	.	.	.	.	.	.	.	.	.	.	.	.
Special Function . . . . .	.	.	.	.	.	.	.	.	.	.	.	.

A    B    C    D    E    F

Alt Sequence . . . . .  
 -----

Step 4            Program 1            Step Begins    1800

Flash. . . . . Dimming Enable. . . . .  
 Red Rest . . . . . Alt Veh Extension . . . . .  
 Spare 5. . . . . Det Log Enable. . . . .  
 Spare 3. . . . . Spare 4 . . . . .  
 Type 0 Dly Enable. . . Spare 2 . . . . .  
 Det Diag Plan. . . . 0

Phase Number

	1	2	3	4	5	6	7	8	9	10	11	12
Max 2 Enable . . . . .	.	.	.	.	.	.	.	.	.	.	.	.
Max 3 Enable . . . . .	.	.	.	.	.	.	.	.	.	.	.	.
Veh Recall . . . . .	.	.	.	.	.	.	.	.	.	.	.	.
Veh Max Recall . . . . .	.	.	.	.	.	.	.	.	.	.	.	.
Ped Recall . . . . .	.	.	.	.	.	.	.	.	.	.	.	.
Cond Service Inhibit. . . . .	.	.	.	.	.	.	.	.	.	.	.	.
Phase Omit . . . . .	.	.	.	.	.	.	.	.	.	.	.	.
Special Function . . . . .	.	.	.	.	.	.	.	.	.	.	.	.

A    B    C    D    E    F

Alt Sequence . . . . .  
 -----