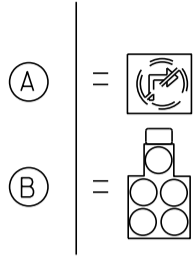
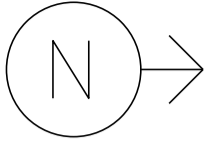


MS # 557



VT 15 WEST

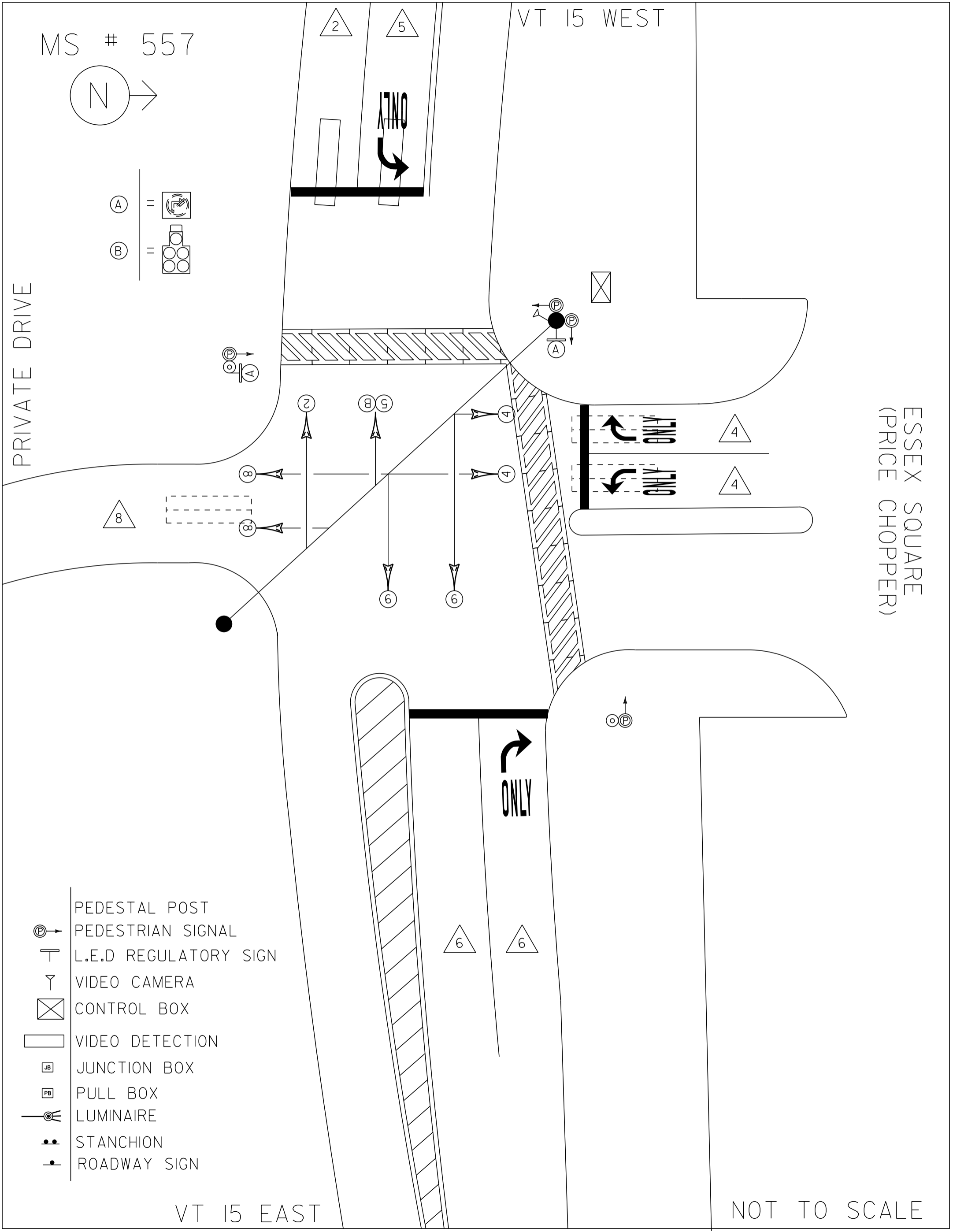
PRIVATE DRIVE

ESSEX SQUARE  
(PRICE CHOPPER)

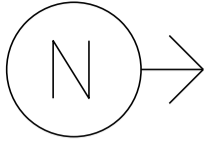
- PEDESTAL POST
- PEDESTRIAN SIGNAL
- L.E.D. REGULATORY SIGN
- VIDEO CAMERA
- CONTROL BOX
- VIDEO DETECTION
- JUNCTION BOX
- PULL BOX
- LUMINAIRE
- STANCHION
- ROADWAY SIGN

VT 15 EAST

NOT TO SCALE



MS # 557



12'

11'

12'

VT 15 WEST

LANE LINE 150'

ONLY



STOP BAR 24'

CROSSWALK 50'

STOP BAR 27'



ONLY

12'

LANE LINE 40'



ONLY

11'

PRIVATE DRIVE

13'

CROSSWALK 75'

26'

STOP BAR 24'



ONLY

LANE LINE 110'

14'

11'

11'

VT 15 EAST

ESSEX SQUARE  
(PRICE CHOPPER)

NOT TO SCALE

INTERSECTION : VT 15 & ESSEX SQUARE (PRICE CHOPPER)			MS # 557	
D I A G R A M				
	TIMING	G = Y =	G = Y =	G = Y =
D I A G R A M				
	TIMING	G = Y =	G = Y =	G = Y =
	PROTECTED TURNS		PERMITTED TURNS PEDESTRIAN	CYCLE LENGTH, C= _____ S



PROPERTY OF  
VT. AGENCY OF TRANS.  
MAINTENANCE DIV.  
IN EMERGENCY CALL  
DIST. TRANS. OFFICE  
802-241-6000  
NIGHTS & WEEKENDS: 878-7700

PROPERTY OF:  
VT. AGENCY OF TRANS.  
MAINTENANCE DIV.

IN EMERGENCY CALL:  
DIST. TRANS. OFFICE  
655-1580 COLCHESTER  
NIGHTS & WEEKENDS: 878-7111

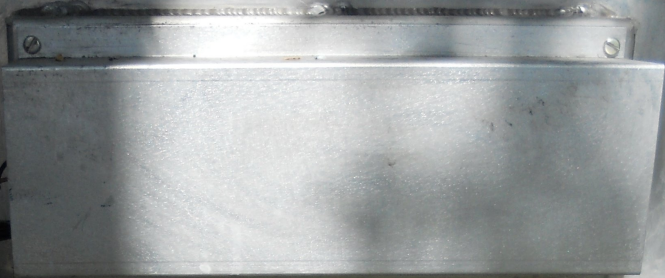
Small orange label with illegible text.

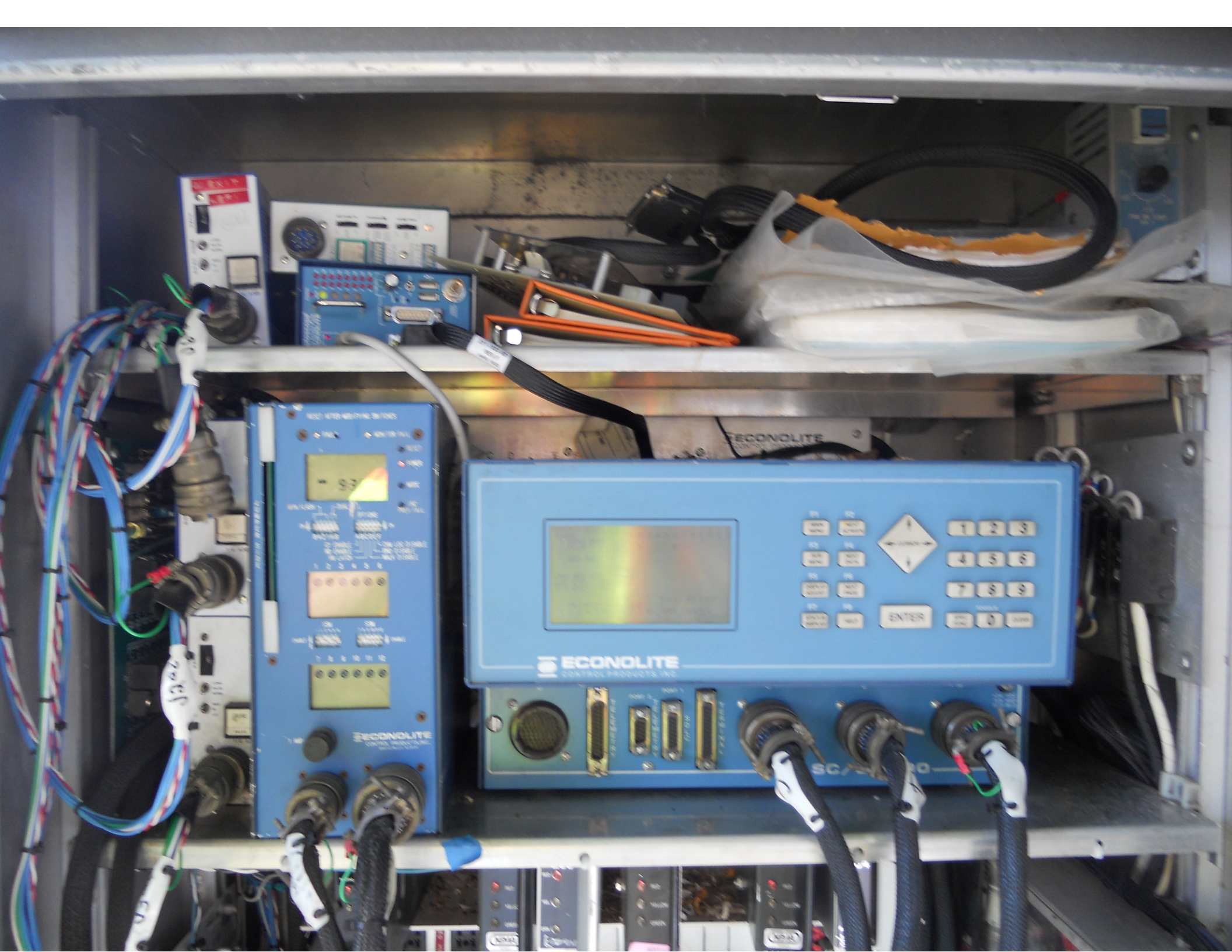
**WARNING**

DO NOT OPERATE  
CABINET WITHOUT  
CONFLICT MONITOR UNIT

**DANGER**

115 VOLTS A.C.





Top-left hardware components including a white module with a red label, a blue module with a circular display, and a blue module with a keypad and connectors.

**ECONOLITE**  
CONTROL PRODUCTS, INC.

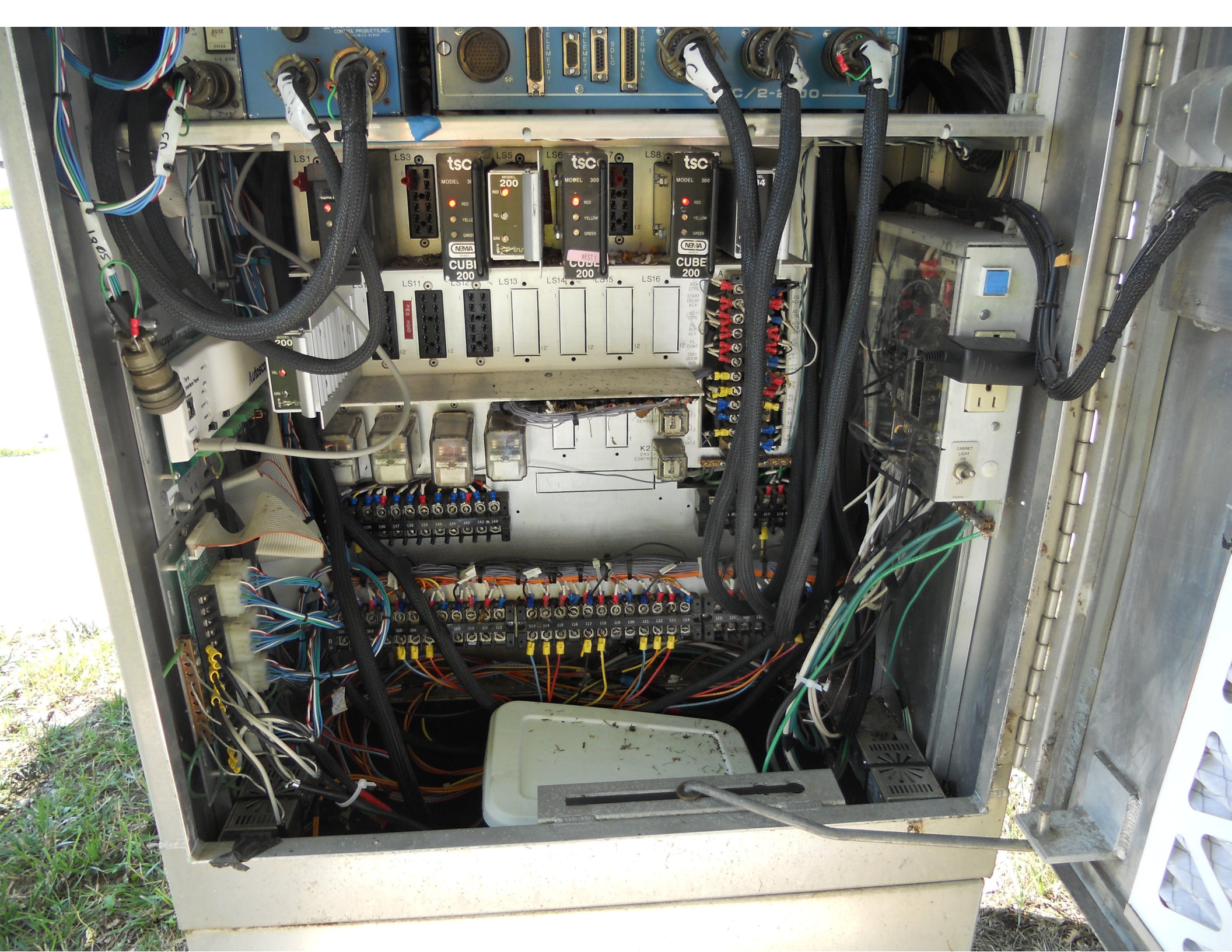
Panel with a central LCD screen, a numeric keypad (0-9), and directional buttons. The screen displays some text and numbers.

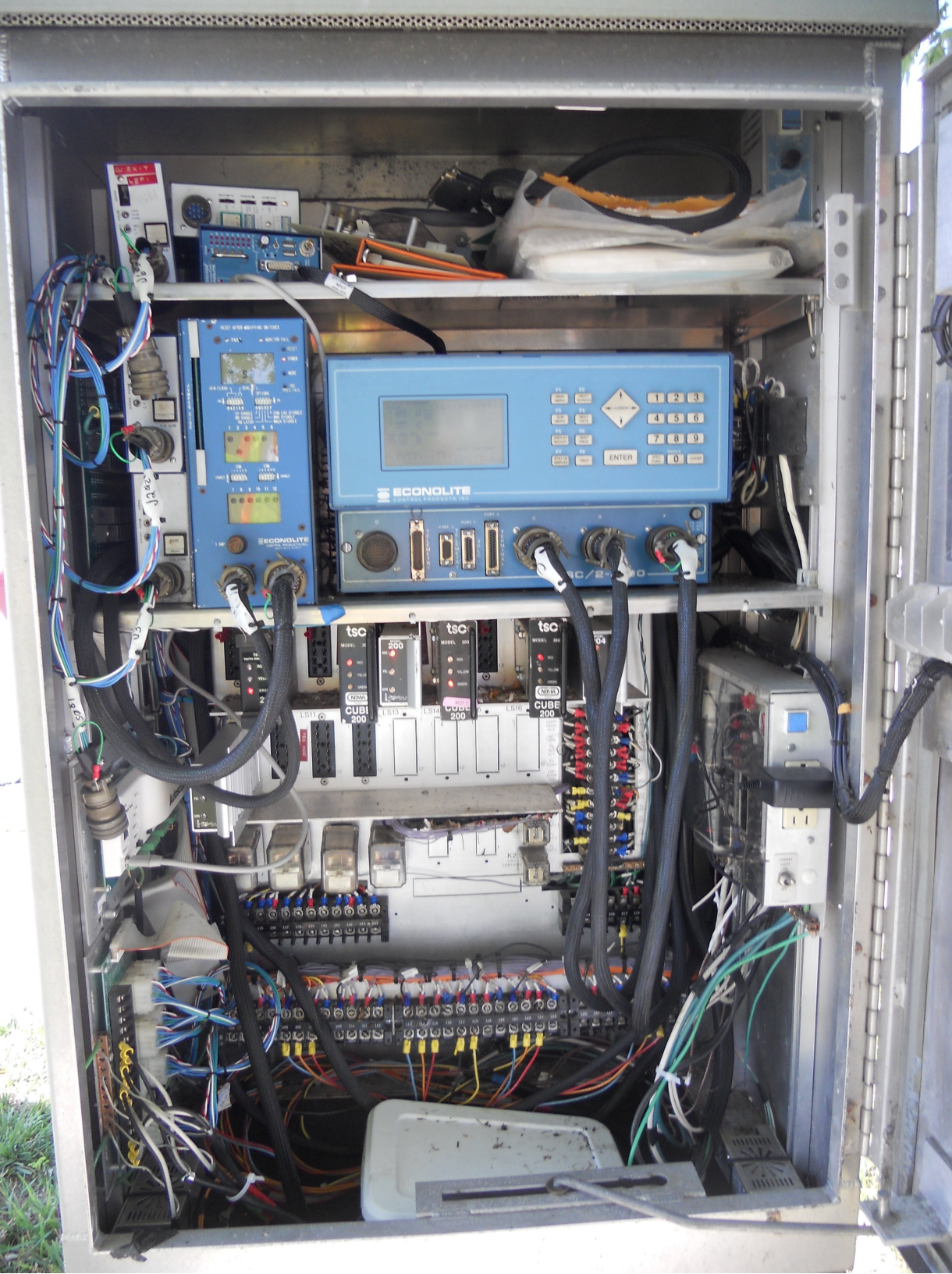
4557-1725-4817-11C 26 1005

Panel with a small LCD display, several indicator lights, and a large connector on the left. The Econolite logo is visible at the bottom.

SC/10

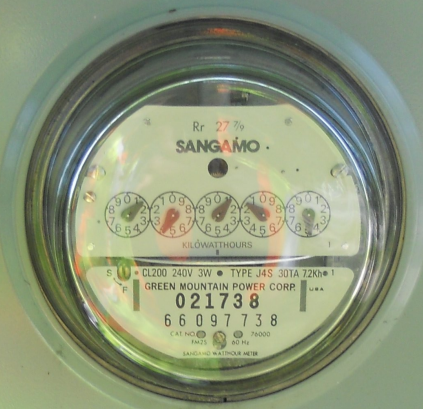
Bottom section of the blue panel featuring various ports: a circular connector, a D-sub connector, two BNC connectors, and a multi-pin connector.







**DANGER / PELIGRO**  
HAZARD OF ELECTRICAL SHOCK OR BURN  
SERVICE BY UTILITY AUTHORIZED PERSONNEL ONLY  
DO NOT PAINT OVER OR REMOVE THIS LABEL  
PELIGRO DE DESCARGA ELÉCTRICA O QUEMADURA  
SOLAMENTE PERSONAL AUTORIZADO DE LA COMPAÑIA  
ELÉCTRICA PUEDE REMOVER ESTA ETIQUETA  
NO PINTAR ENCIMA NI REMOVER ESTA ETIQUETA



GREEN MOUNTAIN POWER  
TYPE 34S 30TA 72K-1

ES380220

**DANGER / PELIGRO**  
HAZARD OF ELECTRICAL SHOCK OR BURN  
SERVICE BY UTILITY AUTHORIZED PERSONNEL ONLY  
DO NOT PAINT OVER OR REMOVE THIS LABEL  
PELIGRO DE DESCARGA ELÉCTRICA O QUEMADURA  
SOLAMENTE PERSONAL AUTORIZADO DE LA COMPAÑIA  
ELÉCTRICA PUEDE REMOVER ESTA ETIQUETA  
NO PINTAR ENCIMA NI REMOVER ESTA ETIQUETA



ONLY



LEFT LANE  
MUST  
TURN LEFT

WISCONSIN









**START CROSSING**  
Watch For  
Vehicles

**DON'T START**  
Finish Crossing  
If Started

**DON'T CROSS**  
TO CROSS  
← PUSH BUTTON →



EXIT







**START CROSSING**  
Watch for  
Yellow

**DON'T START**  
Watch for  
Green

**DON'T CROSS**  
Watch for  
Red

**TO CROSS**  
PUSH BUTTON

Yellow  
Green  
Red











WORTHAM  
KIRKWOOD  
TABORING

STOP  
AHEAD





BONTAN  
AIRBRUSH  
TANNING

RIGHT LANE  
MUST  
TURN RIGHT

HOT & READY  
\$5.55  
LARGE  
PIZZA

























NIC Program Steps

-----

Step	Program	Step Begins	Pattern	Override
------	---------	-------------	---------	----------

TOD Program Steps

Step 1            Program 1            Step Begins    0600

Flash. . . . . Dimming Enable. . . . .  
 Red Rest . . . . . Alt Veh Extension . . . . .  
 Spare 5. . . . . Det Log Enable. . . . .  
 Spare 3. . . . . Spare 4 . . . . .  
 Type 0 Dly Enable. . . Spare 2 . . . . .  
 Det Diag Plan. . . . 0

	Phase Number											
	1	2	3	4	5	6	7	8	9	10	11	12
Max 2 Enable . . . . .	.	X	.	X	X	X	.	X	X	.	.	.
Max 3 Enable . . . . .	.	.	.	.	.	.	.	.	.	.	.	.
Veh Recall . . . . .	.	.	.	.	.	.	.	.	.	.	.	.
Veh Max Recall . . . . .	.	.	.	.	.	.	.	.	.	.	.	.
Ped Recall . . . . .	.	.	.	.	.	.	.	.	.	.	.	.
Cond Service Inhibit. . . . .	.	.	.	.	.	.	.	.	.	.	.	.
Phase Omit . . . . .	.	.	.	.	.	.	.	.	.	.	.	.
Special Function . . . . .	.	.	.	.	.	.	.	.	.	.	.	.

Alt Sequence . . . . . A B C D E F

Step 2            Program 1            Step Begins    1000

Flash. . . . . Dimming Enable. . . . .  
 Red Rest . . . . . Alt Veh Extension . . . . .  
 Spare 5. . . . . Det Log Enable. . . . .  
 Spare 3. . . . . Spare 4 . . . . .  
 Type 0 Dly Enable. . . Spare 2 . . . . .  
 Det Diag Plan. . . . 0

	Phase Number											
	1	2	3	4	5	6	7	8	9	10	11	12
Max 2 Enable . . . . .	.	.	.	.	.	.	.	.	.	.	.	.
Max 3 Enable . . . . .	.	.	.	.	.	.	.	.	.	.	.	.
Veh Recall . . . . .	.	.	.	.	.	.	.	.	.	.	.	.
Veh Max Recall . . . . .	.	.	.	.	.	.	.	.	.	.	.	.
Ped Recall . . . . .	.	.	.	.	.	.	.	.	.	.	.	.
Cond Service Inhibit. . . . .	.	.	.	.	.	.	.	.	.	.	.	.
Phase Omit . . . . .	.	.	.	.	.	.	.	.	.	.	.	.
Special Function . . . . .	.	.	.	.	.	.	.	.	.	.	.	.

Alt Sequence . . . . . A B C D E F

TOD Program Steps

Step 3 Program 1 Step Begins 1500

Flash. . . . . Dimming Enable. . . . .
Red Rest . . . . . Alt Veh Extension . . . . .
Spare 5. . . . . Det Log Enable. . . . .
Spare 3. . . . . Spare 4 . . . . .
Type 0 Dly Enable. . . Spare 2 . . . . .
Det Diag Plan. . . . 0

Table with 12 columns (Phase Number 1-12) and rows for Max 2 Enable, Max 3 Enable, Veh Recall, Veh Max Recall, Ped Recall, Cond Service Inhibit, Phase Omit, and Special Function.

Alt Sequence . . . . . A B C D E F

Step 4 Program 1 Step Begins 1900

Flash. . . . . Dimming Enable. . . . .
Red Rest . . . . . Alt Veh Extension . . . . .
Spare 5. . . . . Det Log Enable. . . . .
Spare 3. . . . . Spare 4 . . . . .
Type 0 Dly Enable. . . Spare 2 . . . . .
Det Diag Plan. . . . 0

Table with 12 columns (Phase Number 1-12) and rows for Max 2 Enable, Max 3 Enable, Veh Recall, Veh Max Recall, Ped Recall, Cond Service Inhibit, Phase Omit, and Special Function.

Alt Sequence . . . . . A B C D E F

TOD Program Steps

-----

Step 5            Program 1            Step Begins    2200

Flash. . . . .	X	Dimming Enable. . . . .
Red Rest . . . . .	.	Alt Veh Extension . . . . .
Spare 5. . . . .	.	Det Log Enable. . . . .
Spare 3. . . . .	.	Spare 4 . . . . .
Type 0 Dly Enable. . . . .	.	Spare 2 . . . . .
Det Diag Plan. . . . .	0	

Phase Number

	1	2	3	4	5	6	7	8	9	10	11	12
Max 2 Enable . . . . .	.	.	.	.	.	.	.	.	.	.	.	.
Max 3 Enable . . . . .	.	.	.	.	.	.	.	.	.	.	.	.
Veh Recall . . . . .	.	.	.	.	.	.	.	.	.	.	.	.
Veh Max Recall . . . . .	.	.	.	.	.	.	.	.	.	.	.	.
Ped Recall . . . . .	.	.	.	.	.	.	.	.	.	.	.	.
Cond Service Inhibit. . . . .	.	.	.	.	.	.	.	.	.	.	.	.
Phase Omit . . . . .	.	.	.	.	.	.	.	.	.	.	.	.
Special Function . . . . .	.	.	.	.	.	.	.	.	.	.	.	.

A    B    C    D    E    F

Alt Sequence . . . . .    .    .    .    .    .    .

-----