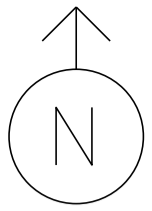
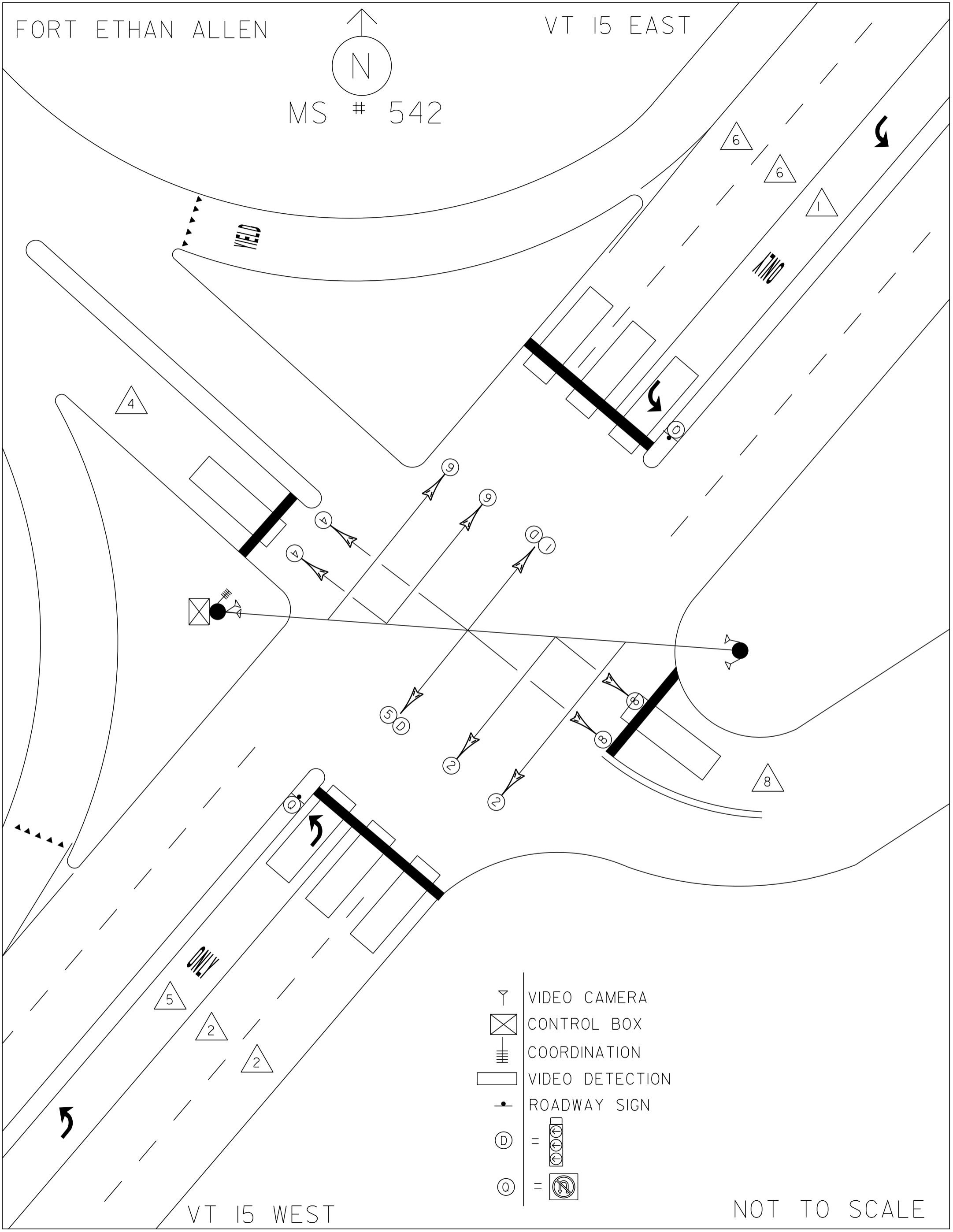


FORT ETHAN ALLEN

VT 15 EAST



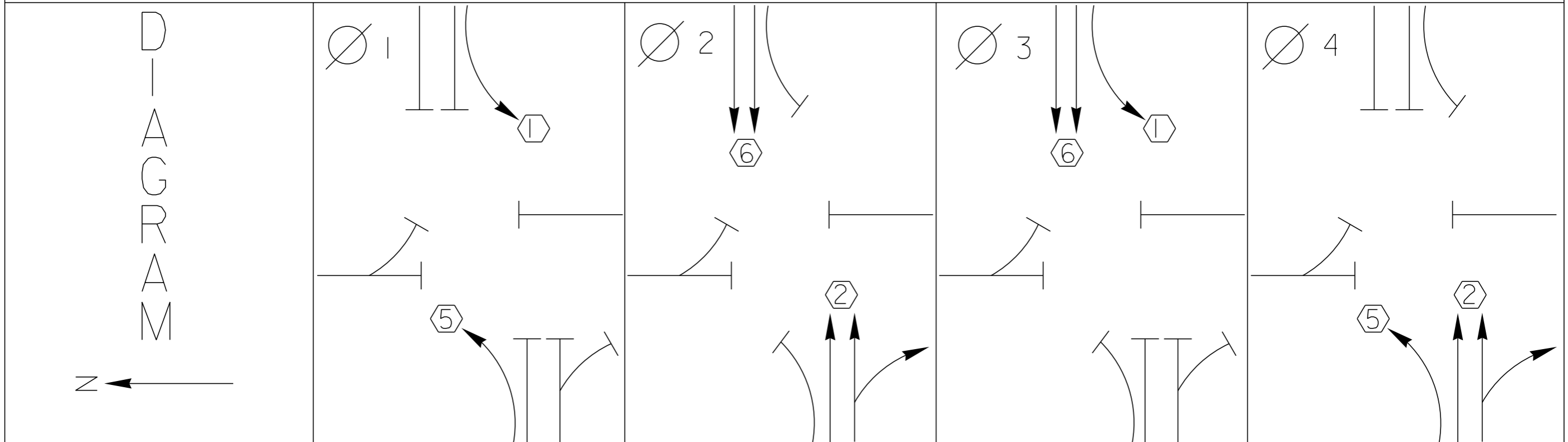
MS # 542



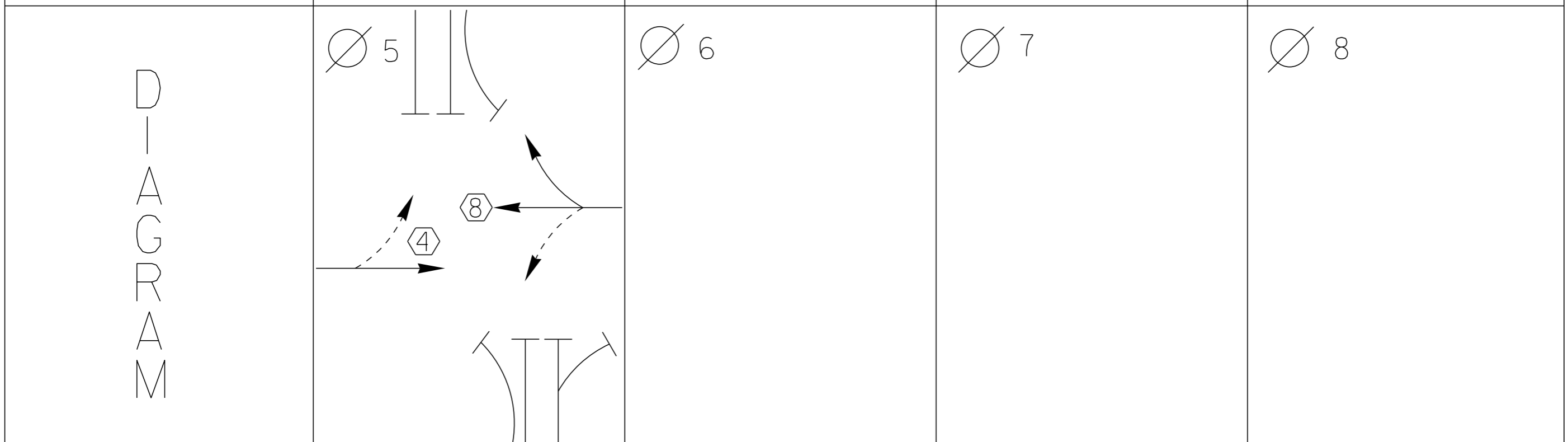
-  VIDEO CAMERA
-  CONTROL BOX
-  COORDINATION
-  VIDEO DETECTION
-  ROADWAY SIGN
-  = 
-  = 

VT 15 WEST

NOT TO SCALE



TIMING	G = Y =	G = Y =	G = Y =	G = Y =
--------	------------	------------	------------	------------



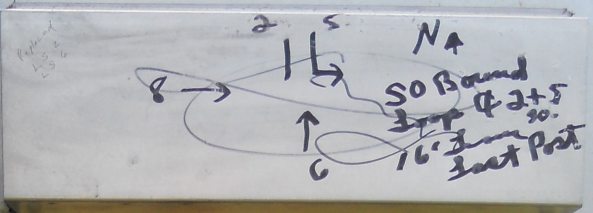
TIMING	G = Y =	G = Y =	G = Y =	G = Y =
--------	------------	------------	------------	------------



CYCLE LENGTH, C = _____ S



FIRETECH



West
out of Post
East
Q6 - West
Q8 - North

Install used
6/2/01

WARNING
DO NOT OPERATE
CABINET WITHOUT
CONFLICT MONITOR UNIT

DANGER
115 VOLTS A.C.

CONTROLLER

ON OFF

AUTO FLASH

STOP TUNING ALIVE ON

VEH TEST SW'S

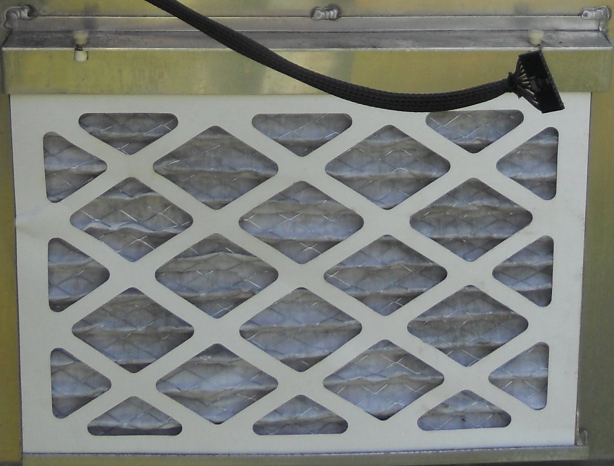
Q1A	Q2B	Q3C	Q4D
Q5	Q6	Q7	Q8

PEDEST SW'S

Q1A	Q2B	Q3C	Q4D
Q5	Q6	Q7	Q8

1548-474

TURN ON
CHECK PANEL



TURN ON
~~HEADS~~ GAMES

- Q 1 - LEFT west
- Q 2 - EAST
- Q 4 - South out OF FORT
- Q 5 - LEFT EAST
- Q 6 - west
- Q 8 - North

INSTALL used
6/24/04

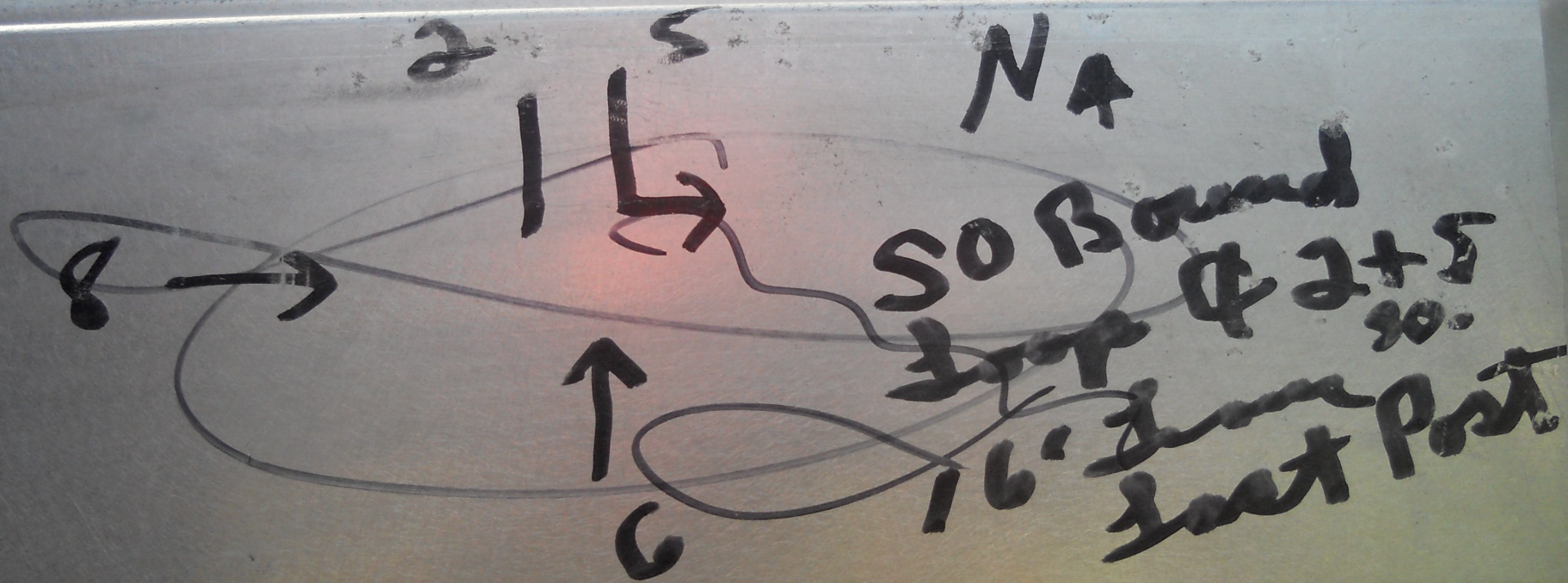
Blue - Other Side
Green - This Side

W

COM

D

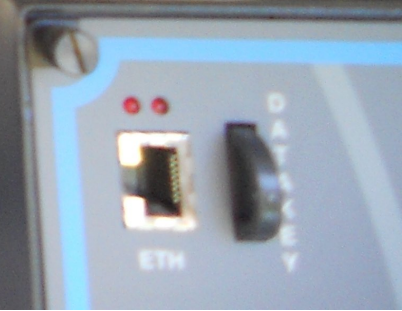
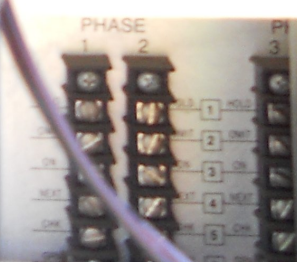
115



1 - Left west

Install used
1/24/04

WARNING
DO NOT OPERATE



Autoscope
ECONOLITE
Model 5200
Network Monitor



115 VAC 1 AMP
FAN ON TEMP
ECONOLITE 44620

ECONOLITE
ASC/3-2100

ETH
PORT 3A
TERM
D

STATUS

115 VAC 1 AMP
SLO-BLO
VDC AMP

1 2 3
4 5 6
7 8 9
0 CLEAR

ENTER

HELP STATUS NEXT PAGE

RESET AFTER MODIFYING SWITCHES

FAULT MONITOR FAIL
RESET
POWER
MODE
INC. PREV. FAIL

7.15

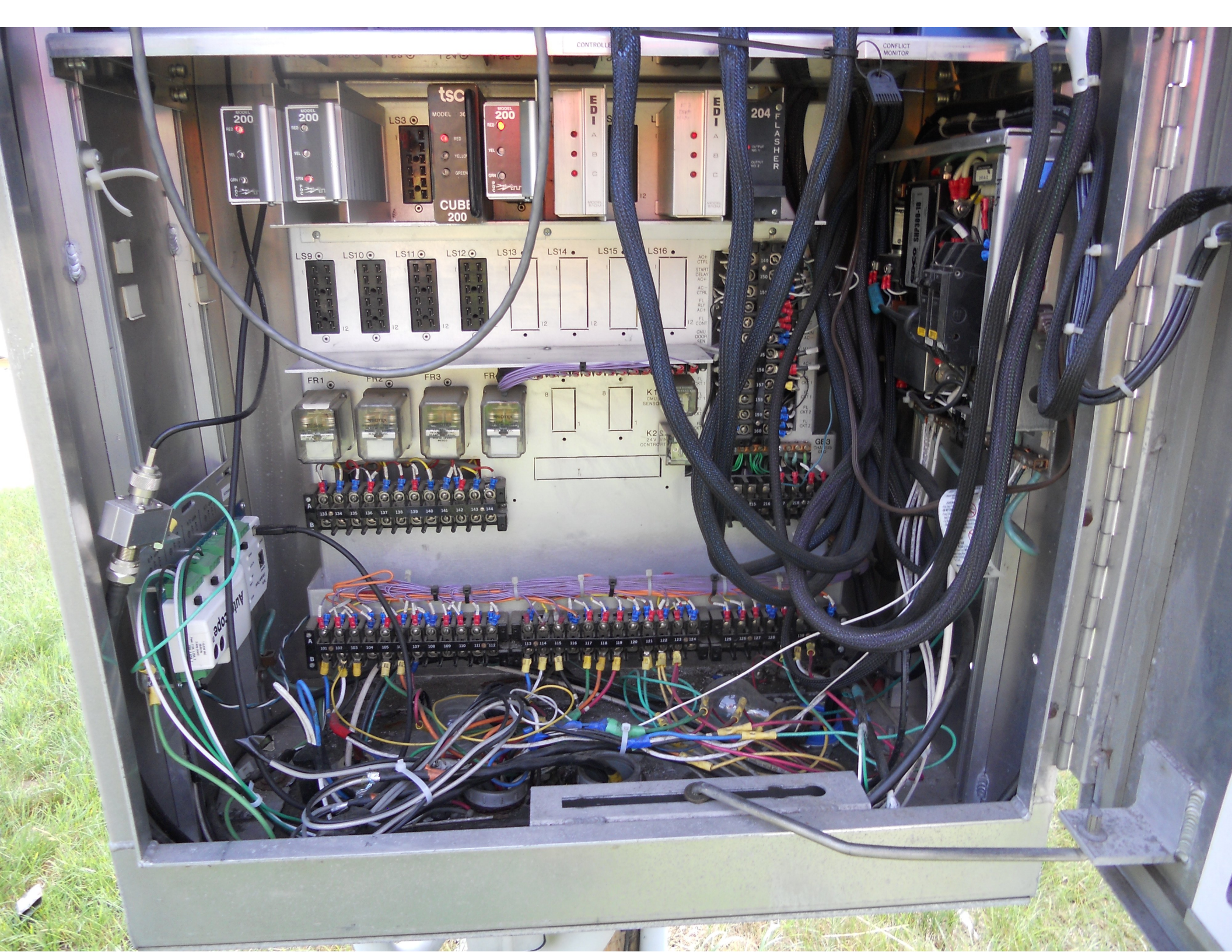
MIN. FLASH DUAL SEL. OPTIONS
or 8421AB ABCDEF
OF ENABLE NO. LATCH 1 CM LOG DISABLE
1 2 3 4 5 6

SM 1 2 3 4 5 6 7 8 9 10 11 12
ENABLE 7 8 9 10 11 12

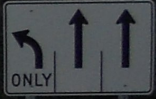
ECONOLITE
CONTROL PRODUCTS



CONFLICT MONITOR







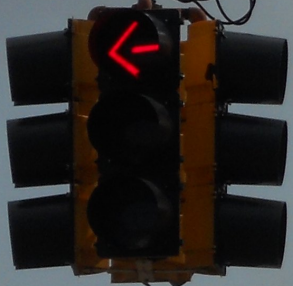
0759
0425
0323

LEFT LANE
MUST
TURN LEFT



FORT ETHAN ALLEN



















LEFT LANE
MUST
TURN LEFT















⚡ DANGER
HAZARD OF ELECTRICAL SHOCK
OR BURN IF COVER REMOVED
SERVICE BY UTILITY
AUTHORIZED PERSONNEL ONLY
DO NOT PAINT OVER OR REMOVE THIS LABEL
2462340 REV 1

ELSTER

KILOWATTHOURS 01M0126G01

ELSTER
SINGLE-STATOR WATTHOUR METER
TYPE AB1 S. 5370020831
FORM 2S 200 CL 240 V 3 W 60 Hz TA 30 Kh 7.2
G.M.P.
463 880
ACG022696331
22 696 331
MADE IN U.S.A.

MILBANK MFG. CO.
SERVISE CITY, MO.
EL GARDEN, ILL.
KANSAS, MO.

TO RESET BREAKER

SERVICE DISCONN

⚡ DANGER
HAZARD OF ELECTRICAL SHOCK
OR BURN IF COVER REMOVED
SERVICE BY UTILITY
AUTHORIZED PERSONNEL ONLY
DO NOT PAINT OVER OR REMOVE THIS LABEL



5/19/2012

1999

2012

© 2012 Google

Google earth

Imagery Date: 5/19/2012 1999

44°30'04.96" N 73°09'02.76" W elev 321 ft

Eye all 728 ft

Date: 08/10/2012

Timing Data:

Phase	1	2	3	4	5	6	7	8	9
Phases in use	X	X		X	X	X		X	
Min Green	5	20	5	5	5	20	0	5	5
Walk	0	0	0	0	0	0	0	0	0
Ped Clr	0	0	0	0	0	0	0	0	0
Veh Ext	2	0	2	5	3	0	0	2	5
MAX 1	8	42	19	14	17	42	0	14	35
MAX 2	10	49	12	12	12	49	0	12	40
MAX 3	8	42	17	16	17	42	0	16	0
Yellow	4	4	4	4	4	4	3	4	3
All Red	2	2	2	2	2	2	2	2	1
Recall to Max	0	0	0	0	0	0	0	0	0

Coordination Patterns: ACS3/Naztec Cordinated Phases 2 & 6

Pattern 1									
Cycle Length	113	Offset	25	COS	111				
Splits	Ph 1	17	Ph 2	59	Ph 3	0	Ph 4	24	
	Ph 5	30	Ph 6	46	Ph 7	0	Ph 8	24	
	Ph 9	0	Ph 10	0	Ph 11	0	Ph 12	0	
Pattern 2(21)									
Cycle Length	103	Offset	94	COS	121				
Splits	Ph 1	17	Ph 2	63	Ph 3	0	Ph 4	20	
	Ph 5	20	Ph 6	60	Ph 7	0	Ph 8	20	
	Ph 9	0	Ph 10	0	Ph 11	0	Ph 12	0	
Pattern 3									
Cycle Length	110	Offset	40	COS	131				
Splits	Ph 1	15	Ph 2	61	Ph 3	0	Ph 4	24	
	Ph 5	25	Ph 6	51	Ph 7	0	Ph 8	24	
	Ph 9	0	Ph 10	0	Ph 11	0	Ph 12	0	

Day Plan [1]

Event	Action Plan	Step Begins
1	2	0600
2	1	0900
3	3	1400
4	1	1800
5	4	0000

Day Plan [2]

Event	Action Plan	Step Begins
1	2	0500
2	1	0800
3	3	1300
4	1	1700
5	4	2300

Day Plan [3]

Event	Action Plan	Step Begins
1	2	0700
2	1	1000
3	3	1500
4	1	1900
5	4	0100

Action Plan

Action Plan	Pattern
1	1
2	2
3	3
4	254-FREE