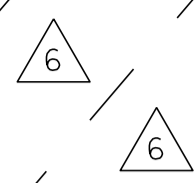
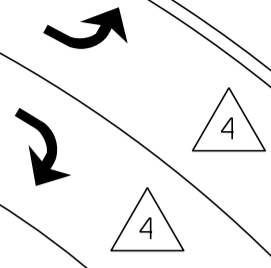
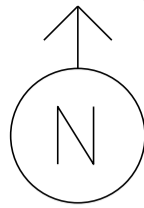






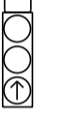






CAMP JOHNSON

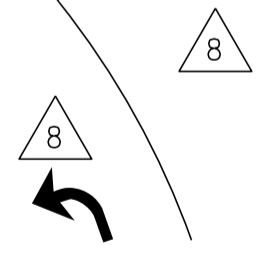
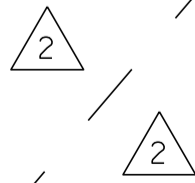
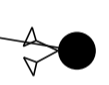
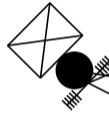
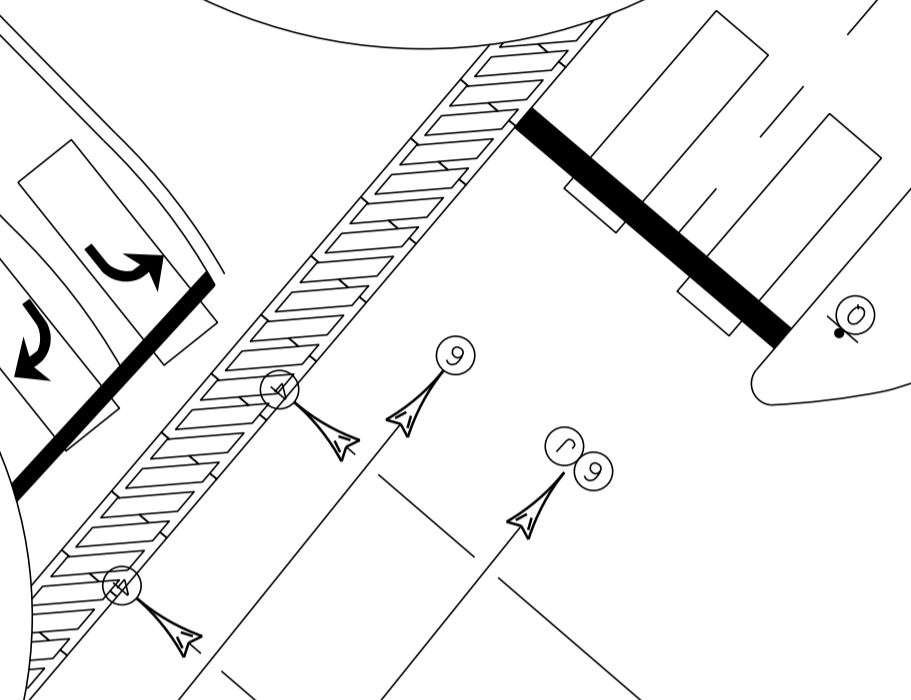
VT 15 EAST

MS # 541



-  VIDEO CAMERA
-  CONTROL BOX
-  COORDINATION
-  VIDEO DETECTION
-  ROADWAY SIGN
-  = 
-  = 
-  = 

AND AND

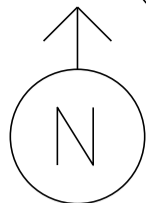


VT 15 WEST

NOT TO SCALE

MS # 541

VT 15 EAST



CAMP JOHNSON

12'
LANE LINE 195'

STOP BAR 33'

CROSSWALK 130'

STOP BAR 22'

STOP BAR 33'

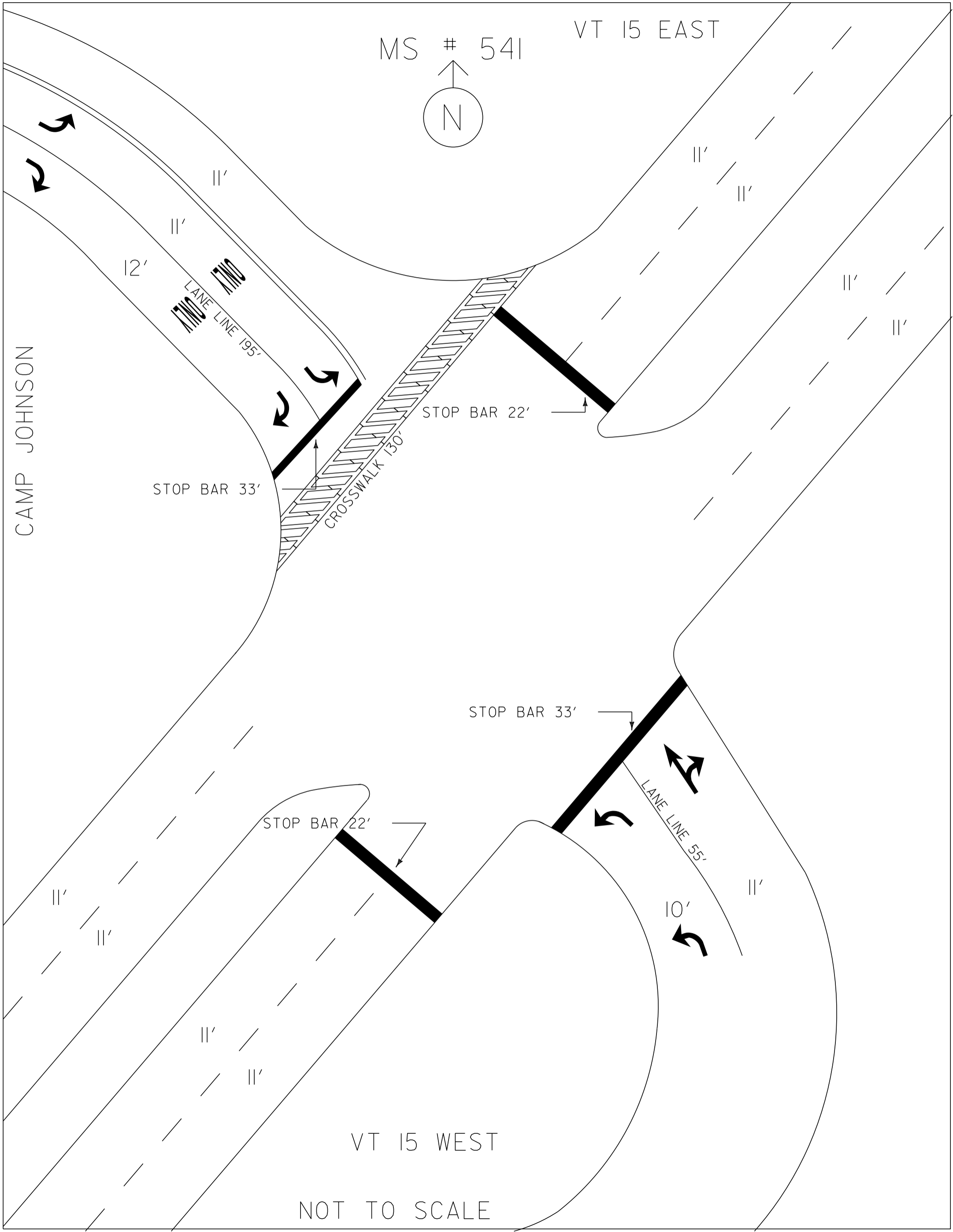
STOP BAR 22'

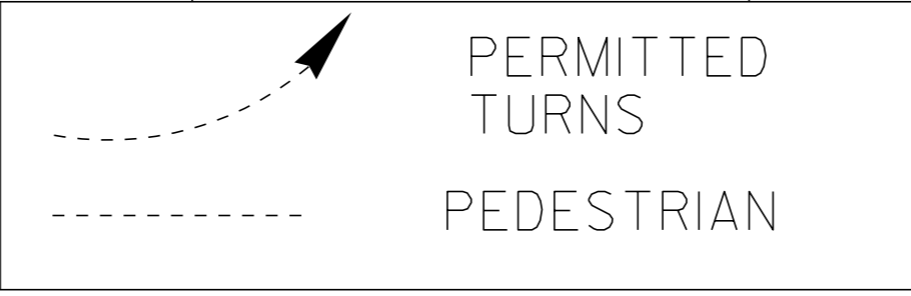
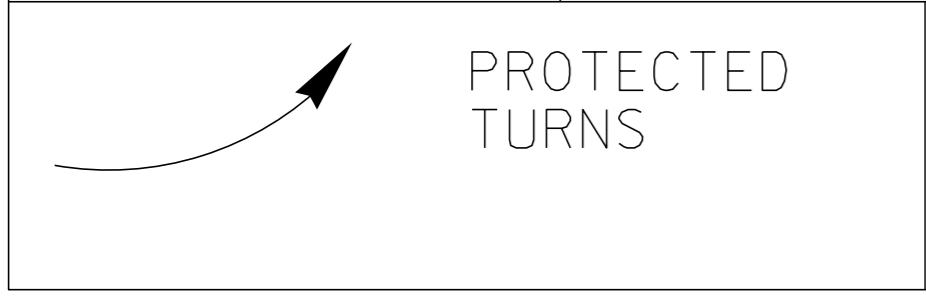
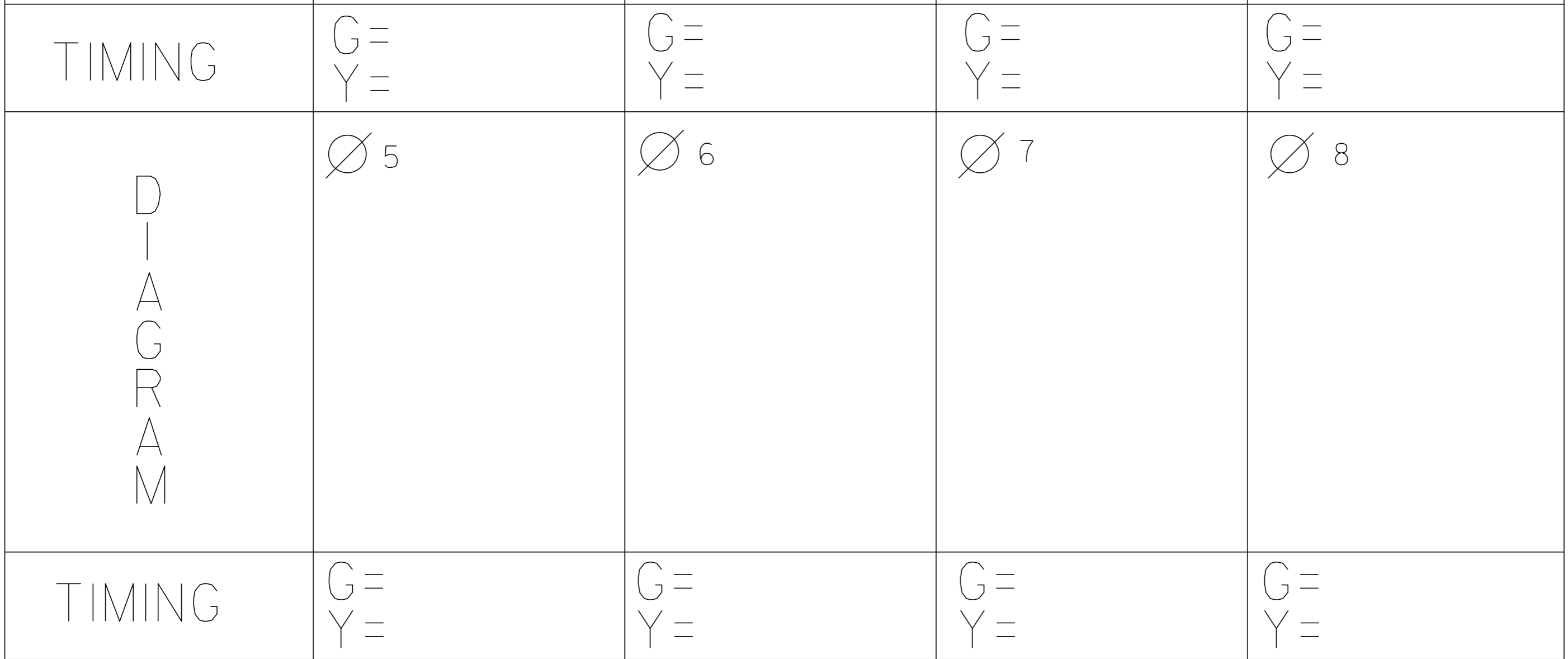
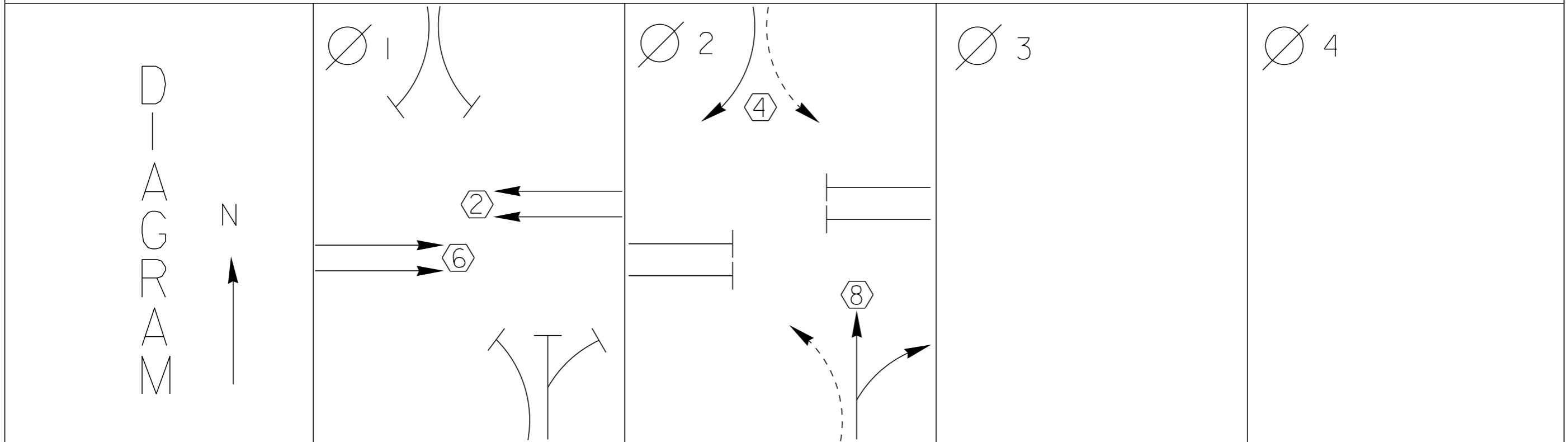
LANE LINE 55'

10'

VT 15 WEST


NOT TO SCALE





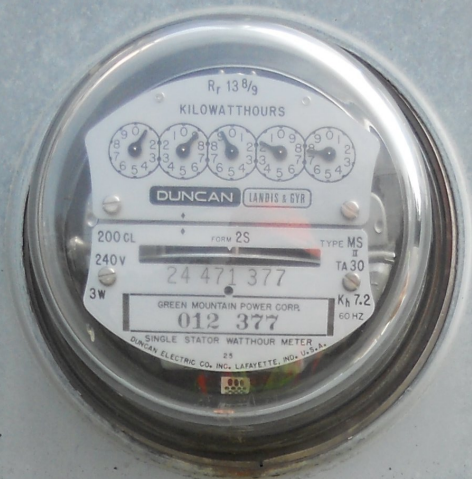
CYCLE LENGTH, C = _____ S



 **ECONOLITE**

PROPERTY OF
VT. AGENCY OF TRANSPORTATION
MAINTENANCE DIV.
IN EMERGENCY CALL
DIST. TRAFFIC OFFICE
800-555-1234
MOUNTAIN VIEW, VT 05602

PROPERTY OF:
VT. AGENCY OF TRANS.
MAINTENANCE DIV.
IN EMERGENCY CALL:
DIST. TRANS. OFFICE
655-1580
NIGHTS & WEEKENDS: 878-7111



ANCHOR

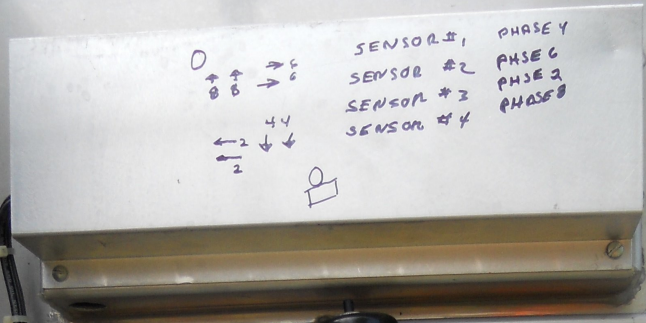


SERVICE
DISCONNECT

NATIONAL GUARD RD



RECNAVOLITE 01



WARNING

DO NOT OPERATE
CABINET WITHOUT
CONFLICT MONITOR UNIT

DANGER

115 VOLTS A.C.

5

1540-45-7

CONTROLLER

ON OFF

AUTO

FLASH

STOP
TIMING
AUTO

ON OFF

VER TEST SW'S

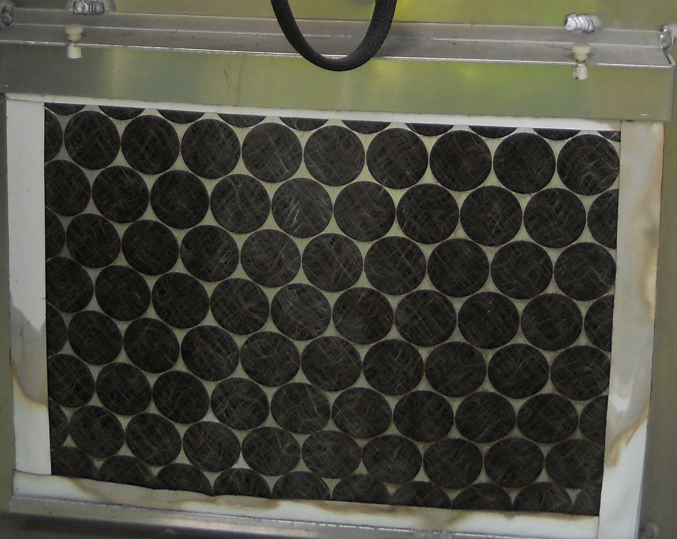
01/A 02/B 03/C 04/D

05 06 07 08

RED TEST SW'S

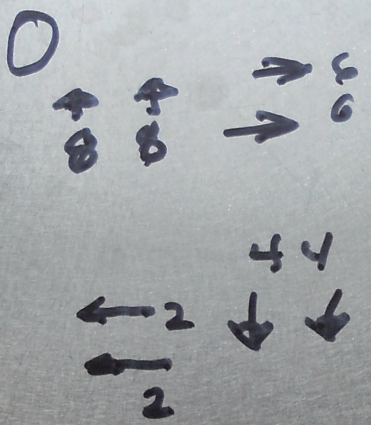
01/A 02/B 03/C 04/D

02 04 06 08



ECONOLITE 01

INSPECTION
ACCEPTED



SENSOR #1	PHASE 4
SENSOR #2	PHASE 6
SENSOR #3	PHASE 2
SENSOR #4	PHASE 8

WARN

DO NOT OPEN
CABINET WHEN
CONFLICT MODE

Open - This side
Other side

Model 5200
Wireless Modem

Autoscope
Access Point
ECONOLITE

RESET AFTER MODIFYING SWITCHES

FAULT MONITOR FAIL

RESET

POWER

MODE

INC. PREV. FAIL

MIN. FLASH

DUAL SEL.

842 TAB

ON

ON

ABCDEF

OPTION

DOWN LOCK DISABLE

DOWN LOCK DISABLE

WALK LATCH

WALK LATCH

1 2 3 4 5 6

SM 12LE 1F

SSM 1 2 3 4 5 6

EMERGENCY

EMERGENCY

7 8 9 10 11 12

ECONOLITE CONTROL PRODUCTS, INC. AMHERST, MA 01001

1 AMP FUSE

S/N 9007 786

STATUS DISPLAY

7:16 DATE

1 2 3 4 5 6 7 8 9 0

F1 MAIN MENU F2 NEXT SCREEN

F3 SUB MENU F4 NEXT DATA

F5 DISPLAY ADJUST F6 NEXT PAGE

F7 STATUS DISPLAY F8 HELP

ENTER

TOGGLE SPEC FUNC 0 CLEAR

ECONOLITE CONTROL PRODUCTS, INC.

DISP. ADJ.

A B C D

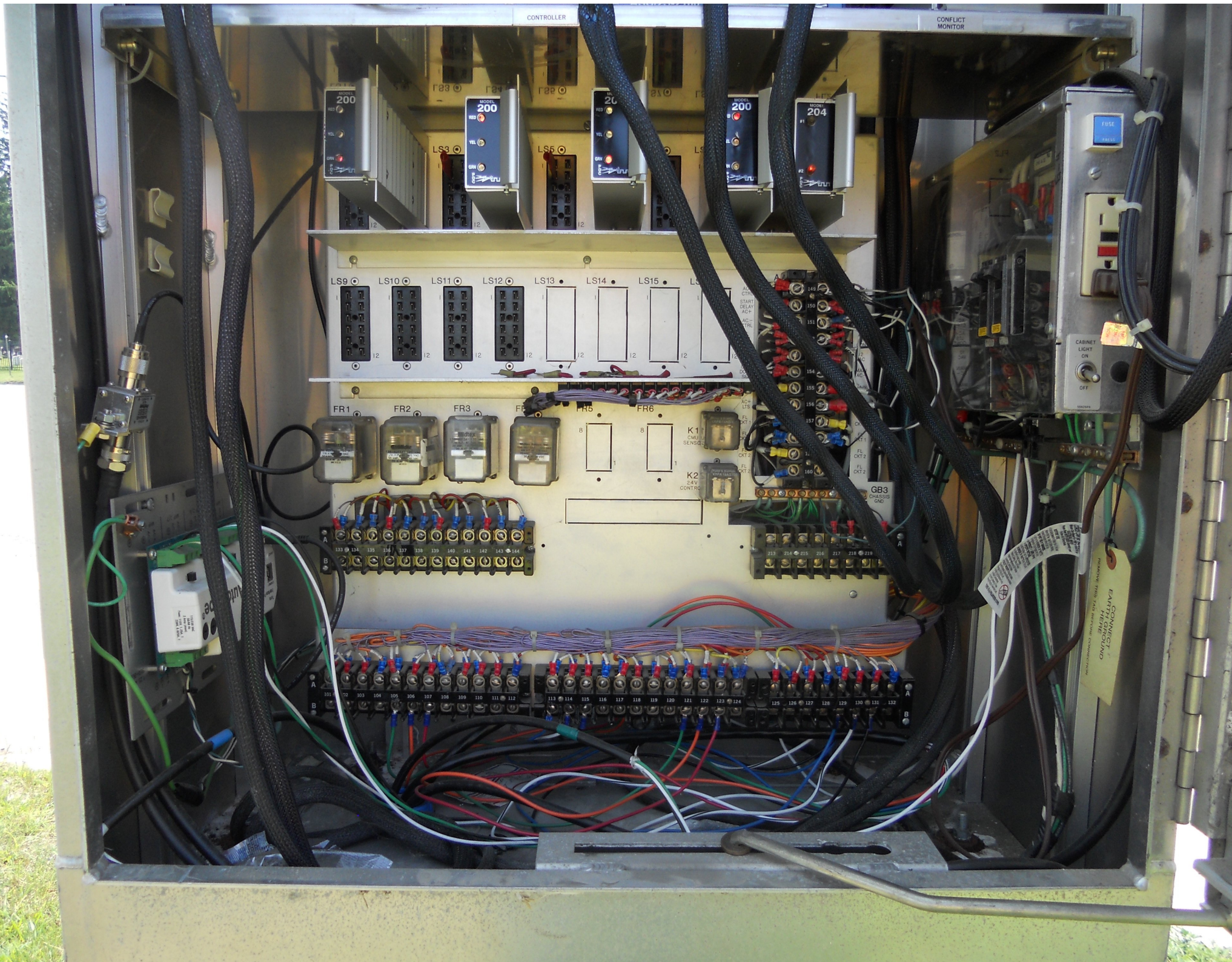
115 VAC 1 AMP 1 PHASE

+24 VDC 3/4 AMP SLO-BLO

ASC/2S-2100

CONTROLLER

CONFLICT MONITOR



CONTROLLER

CONFLICT MONITOR

MODEL 200

MODEL 200

MODEL 200

MODEL 200

MODEL 204

LS9

LS10

LS11

LS12

LS13

LS14

LS15

FR1

FR2

FR3

FR4

FR5

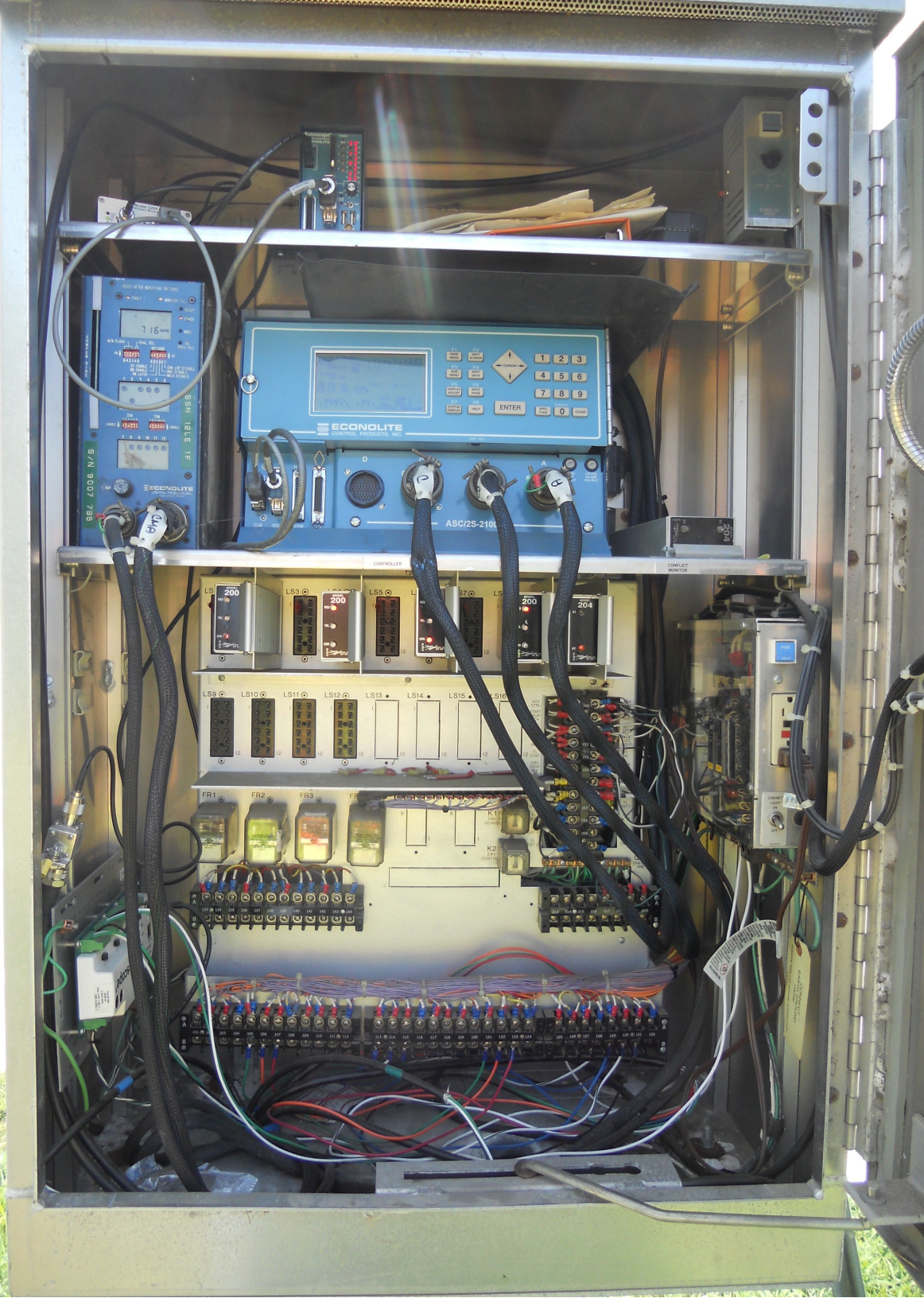
FR6

K1
CMU
SENSG

K2
24V
CONTR

GB3
CHASSIS
GND

CONNECT TO
EARTH GROUND





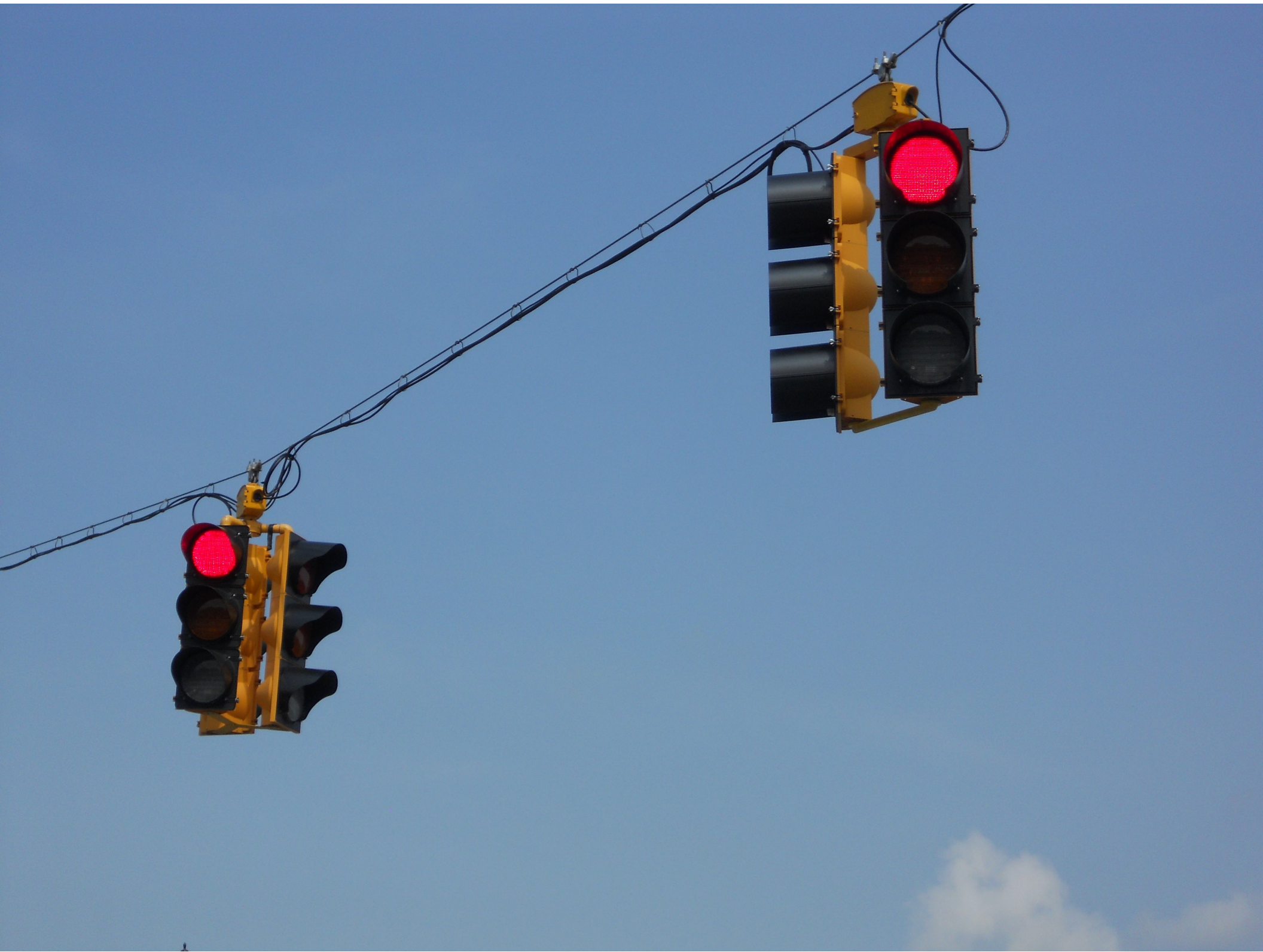






ONLY















Vt NATIONAL GUARD Rd





ONLY ONLY

ONLY

ONLY











5/19/2012

CABINET MS-541

College Pkwy

© 2012 Google

Google earth

Imagery Date: 5/19/2012



1999

44°29'54.97" N 73°09'23.21" W elev 318 ft

Eye all

748 ft



Coordination Patterns

 Pattern 1
 Cycle Length . . . 82 COS 111
 Offset 0
 Vehicle Permissive . . [1] 0 [2] 0
 Vehicle Perm 2 Displacement 0 Phase Reservice. . NO
 Splits: Phase 1- 0 2- 52 3- 0 4- 30
 Phase 5- 0 6- 52 7- 0 8- 30
 Phase 9- 0 10- 0 11- 0 12- 0 Split Sum: 0
 Split Extension/Ring [1] 0 [2] 0
 Split Demand Pattern [1] 0 [2] 0
 XRT Pattern. . . 0
 Phase Number: 1 2 3 4 5 6 7 8 9 10 11 12
 Coord Phases . . . X . . . X
 Veh Recall
 Veh Max Recall . . X . . . X
 Ped Recall
 Veh Omit
 Alt Sequence . . A: . B: . C: . D: . E: . F: .

Pattern 2
 Cycle Length . . . 91 COS 211
 Offset 0
 Vehicle Permissive . . [1] 0 [2] 0
 Vehicle Perm 2 Displacement 0 Phase Reservice. . NO
 Splits: Phase 1- 0 2- 68 3- 0 4- 23
 Phase 5- 0 6- 68 7- 0 8- 23
 Phase 9- 0 10- 0 11- 0 12- 0 Split Sum: 0
 Split Extension/Ring [1] 0 [2] 0
 Split Demand Pattern [1] 0 [2] 0
 XRT Pattern. . . 0
 Phase Number: 1 2 3 4 5 6 7 8 9 10 11 12
 Coord Phases . . . X . . . X
 Veh Recall
 Veh Max Recall . . X . . . X
 Ped Recall
 Veh Omit
 Alt Sequence . . A: . B: . C: . D: . E: . F: .

Pattern 3
 Cycle Length . . . 93 COS 311
 Offset 25
 Vehicle Permissive . . [1] 0 [2] 0
 Vehicle Perm 2 Displacement 0 Phase Reservice. . NO
 Splits: Phase 1- 0 2- 57 3- 0 4- 36
 Phase 5- 0 6- 57 7- 0 8- 36
 Phase 9- 0 10- 0 11- 0 12- 0 Split Sum: 0
 Split Extension/Ring [1] 0 [2] 0
 Split Demand Pattern [1] 0 [2] 0
 XRT Pattern. . . 0
 Phase Number: 1 2 3 4 5 6 7 8 9 10 11 12
 Coord Phases . . . X . . . X
 Veh Recall
 Veh Max Recall . . X . . . X
 Ped Recall
 Veh Omit
 Alt Sequence . . A: . B: . C: . D: . E: . F: .

NIC Program Steps

Step	Program	Step Begins	Pattern	Override
1	1	0600	2	NO
2	1	0900	1	NO
3	1	1400	3	NO
4	1	1800	1	NO
5	1	0000	0	NO
6	2	0600	1	NO
7	2	1800	1	NO
8	2	0000	0	NO

TOD Program Steps

 Step 1 Program 1 Step Begins 0600

Flash. Dimming Enable.
 Red Rest Alt Veh Extension
 Spare 5. Det Log Enable.
 Spare 3. Spare 4
 Type 0 Dly Enable. . . Spare 2
 Det Diag Plan. . . . 0

	Phase Number											
	1	2	3	4	5	6	7	8	9	10	11	12
Max 2 Enable	X	.	X
Max 3 Enable
Veh Recall
Veh Max Recall	X
Ped Recall
Cond Service Inhibit.
Phase Omit
Special Function

Alt Sequence A B C D E F

Step 2 Program 1 Step Begins 0900

Flash. Dimming Enable.
 Red Rest Alt Veh Extension
 Spare 5. Det Log Enable.
 Spare 3. Spare 4
 Type 0 Dly Enable. . . Spare 2
 Det Diag Plan. . . . 0

	Phase Number											
	1	2	3	4	5	6	7	8	9	10	11	12
Max 2 Enable
Max 3 Enable
Veh Recall
Veh Max Recall	X
Ped Recall
Cond Service Inhibit.
Phase Omit
Special Function

Alt Sequence A B C D E F

TOD Program Steps

 Step 3 Program 1 Step Begins 1500

Flash. Dimming Enable.
 Red Rest Alt Veh Extension
 Spare 5. Det Log Enable.
 Spare 3. Spare 4
 Type 0 Dly Enable. . . Spare 2
 Det Diag Plan. . . . 0

	Phase Number											
	1	2	3	4	5	6	7	8	9	10	11	12
Max 2 Enable
Max 3 Enable	X	.	X
Veh Recall
Veh Max Recall	X
Ped Recall
Cond Service Inhibit.
Phase Omit
Special Function

Alt Sequence A B C D E F

Step 4 Program 1 Step Begins 1800

Flash. Dimming Enable.
 Red Rest Alt Veh Extension
 Spare 5. Det Log Enable.
 Spare 3. Spare 4
 Type 0 Dly Enable. . . Spare 2
 Det Diag Plan. . . . 0

	Phase Number											
	1	2	3	4	5	6	7	8	9	10	11	12
Max 2 Enable
Max 3 Enable
Veh Recall
Veh Max Recall	X
Ped Recall
Cond Service Inhibit.
Phase Omit
Special Function

Alt Sequence A B C D E F

TOD Program Steps

 Step 5 Program 2 Step Begins 0600

Flash. Dimming Enable.
 Red Rest Alt Veh Extension
 Spare 5. Det Log Enable.
 Spare 3. Spare 4
 Type 0 Dly Enable. . . Spare 2
 Det Diag Plan. . . . 0

	Phase Number											
	1	2	3	4	5	6	7	8	9	10	11	12
Max 2 Enable
Max 3 Enable
Veh Recall
Veh Max Recall	X
Ped Recall
Cond Service Inhibit.
Phase Omit
Special Function

Alt Sequence A B C D E F

Step 6 Program 2 Step Begins 1500

Flash. Dimming Enable.
 Red Rest Alt Veh Extension
 Spare 5. Det Log Enable.
 Spare 3. Spare 4
 Type 0 Dly Enable. . . Spare 2
 Det Diag Plan. . . . 0

	Phase Number											
	1	2	3	4	5	6	7	8	9	10	11	12
Max 2 Enable
Max 3 Enable
Veh Recall
Veh Max Recall	X
Ped Recall
Cond Service Inhibit.
Phase Omit
Special Function

Alt Sequence A B C D E F
