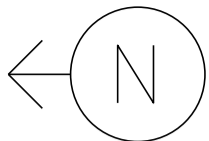
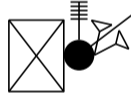
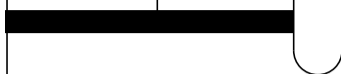


MS # 540

VT 15 EAST



CAMPUS ROAD



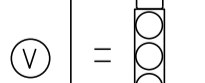
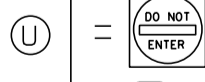
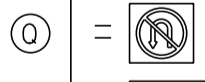
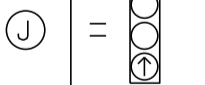
VIDEO CAMERA

CONTROL BOX

COORDINATION

VIDEO DETECTION

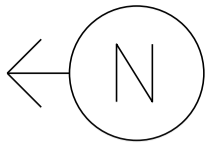
ROADWAY SIGN



VT 15 WEST

NOT TO SCALE

MS # 540



11' | 11' | 11' | 11'

VT 15 EAST

CAMPUS ROAD

STOP BAR 22'

11'

11'

CROSSWALK 95'

STOP BAR 24'

16'

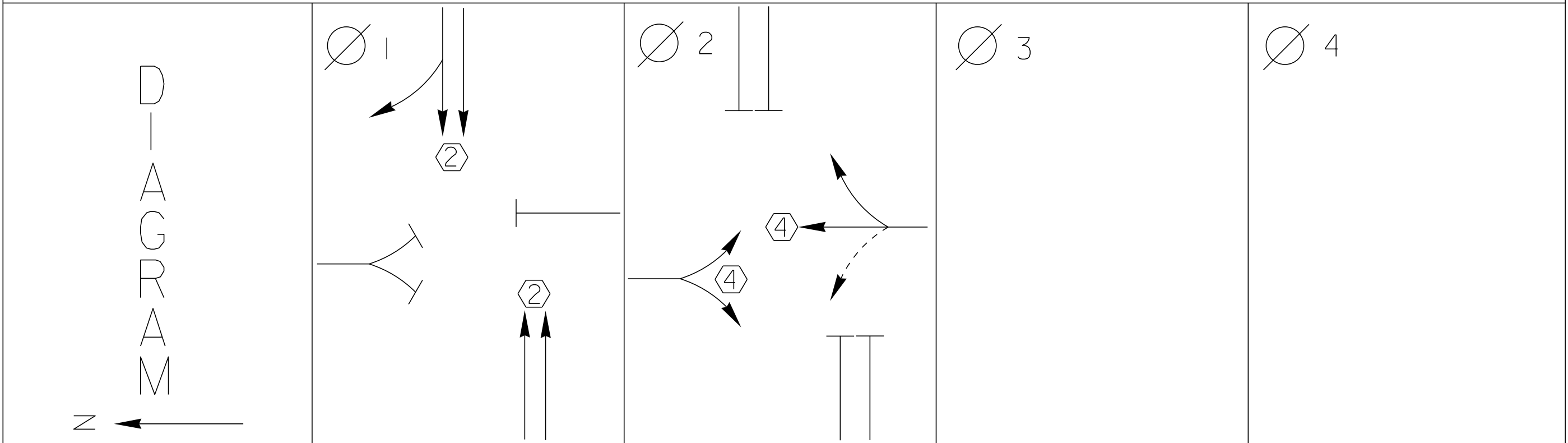
STOP BAR 17'

STOP BAR 22'

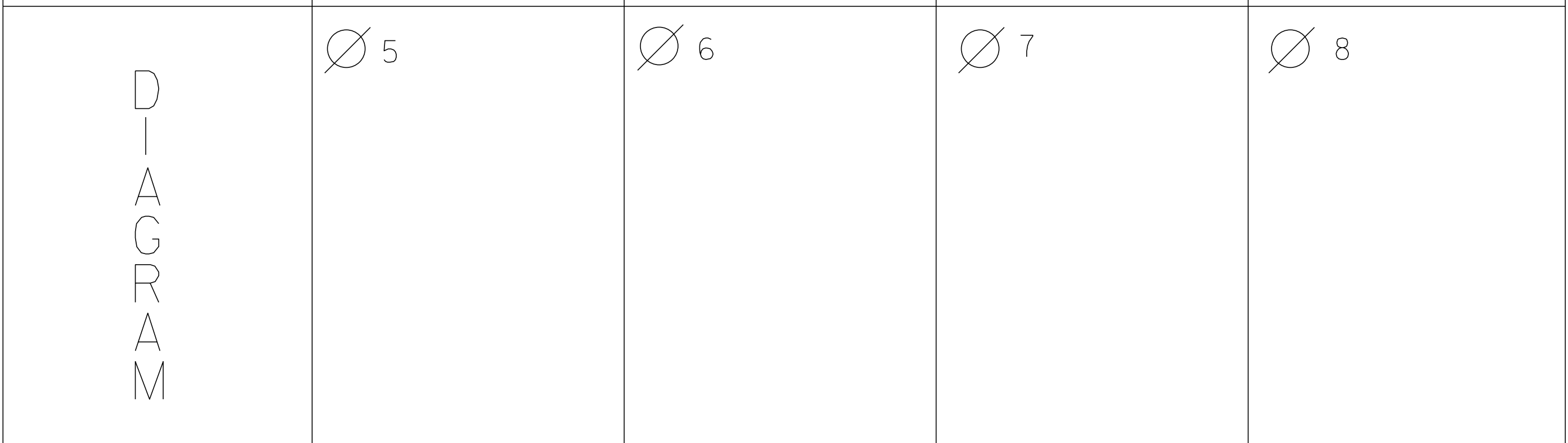
11' | 11' | 11' | 11'

VT 15 WEST

NOT TO SCALE



TIMING	G = Y =	G = Y =	G = Y =	G = Y =
--------	------------	------------	------------	------------



TIMING	G = Y =	G = Y =	G = Y =	G = Y =
--------	------------	------------	------------	------------

	PROTECTED TURNS	 	PERMITTED TURNS  PEDESTRIAN	CYCLE LENGTH, C = _____ S
--	--------------------	--	--------------------------------------	---------------------------



PROPERTY OF  
VT AGENCY OF TRANSPORTATION  
MAINTENANCE DIV.  
IN EMERGENCY CALL  
802-241-3000  
800-368-6262  
MOUNTAIN & HILLSIDE, 800-368-6262

**E.A.L.**  
ELECTRIC & AIR LINES  
INCORPORATED

DO NOT  
ENTER

PROPERTY OF:  
VT. AGENCY OF TRANS.  
MAINTENANCE DIV.

IN EMERGENCY CALL:  
DIST. TRANS. OFFICE  
655-1580 COLCHESTER  
NIGHTS & WEEKENDS: 878-7111

**F.A.L.**

TS RESERVED

**WARNING**

DO NOT OPERATE  
CABINET WITHOUT  
CONFLICT MONITOR UNIT

12/3/93

**DANGER**

115 VOLTS A.C.

*Green - This side  
Blue - Other Side*

CONTROLLER

OFF    ON

AUTO

FLASH

STOP  
TIMING  
SWITCH

ON

VEH TEST SW'S

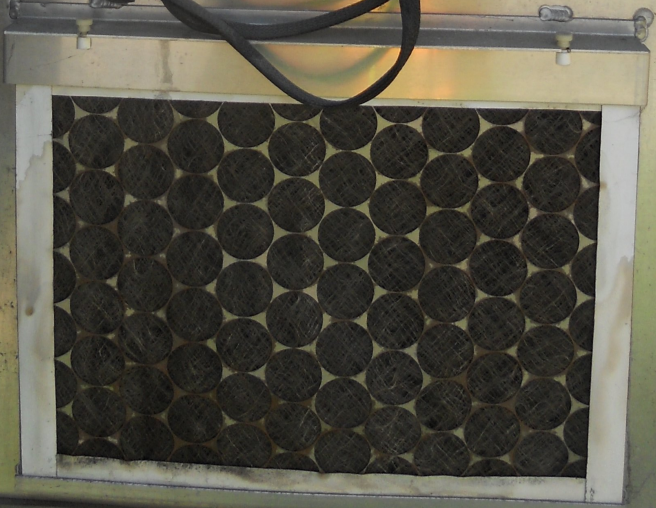
01/A	02/B	03/C	04/D
05	06	07	08

FED TEST SW'S

01/A	02/B	03/C	04/D
05	06	07	08

12/3/93

Yellow component with screws





**ECONOLITE**  
ASC/3-2100

STATUS

115 VAC  
1 AMP

SLO-BLO  
VDC  
1 AMP

CONTROL PRODUCTS, INC.  
8848-160, C-2, 702 BLDG.

The central unit is a large blue and grey control panel. It features a central LCD screen displaying a grid of data. Below the screen is a numeric keypad (0-9) and several function buttons including 'MAIN MENU', 'SUB MENU', 'NEXT DATA', 'NEXT SCREEN', 'ENTER', 'HELP', 'STATUS DISPLAY', and 'NEXT PAGE'. On the left side, there are ports for 'ETH', 'RS-232C', 'RS-485', and 'RS-422'. On the right side, there are two large circular connectors labeled 'D' and 'A' with blue braided cables attached. The top of the panel has a 'STATUS' indicator light.

RESET AFTER MODIFYING SWITCHES

FAULT MONITOR FAIL  
RESET  
POWER  
MODE  
INC. PREV. FAIL

2:32

MIN. FLASH DUAL SEL. OPTIONS  
ON OFF ON

8421AB ABCDEF CVM LOG DISABLE  
CVM ENABLE WD ENABLE WALK DISABLE  
VM LATCH

1 2 3 4 5 6

SSM 1 2 3 4 4 4  
ENABLE

SSM 7 8 9 10 11 12  
ENABLE

7 8 9 10 11 12

1 AMP

**ECONOLITE**  
CONTROL PRODUCTS, INC.  
8848-160, C-2, 702 BLDG.

4 UPPER SIDE

SSM 1 2 L E 1 K

S/N 9107 829

The right-hand unit is a blue control panel with a digital display showing '2:32'. It has several indicator lights and buttons at the top. Below the display are several rows of switches and buttons, including 'MIN. FLASH', 'DUAL SEL.', 'OPTIONS', 'CVM ENABLE', 'WD ENABLE', 'VM LATCH', 'CVM LOG DISABLE', and 'WALK DISABLE'. There are also two rows of 'SSM' (Serial Switch Module) indicators with 'ENABLE' buttons. The panel is labeled '4 UPPER SIDE' and 'SSM 1 2 L E 1 K'. The serial number 'S/N 9107 829' is printed vertically on the left side. The bottom of the panel features a '1 AMP' indicator and the 'ECONOLITE CONTROL PRODUCTS, INC.' logo.

**Autoscope**  
Terra Access Point  
ECONOLITE

POWER

SELECT

VIDEO OUTPUT

PORT

RX VALID TX

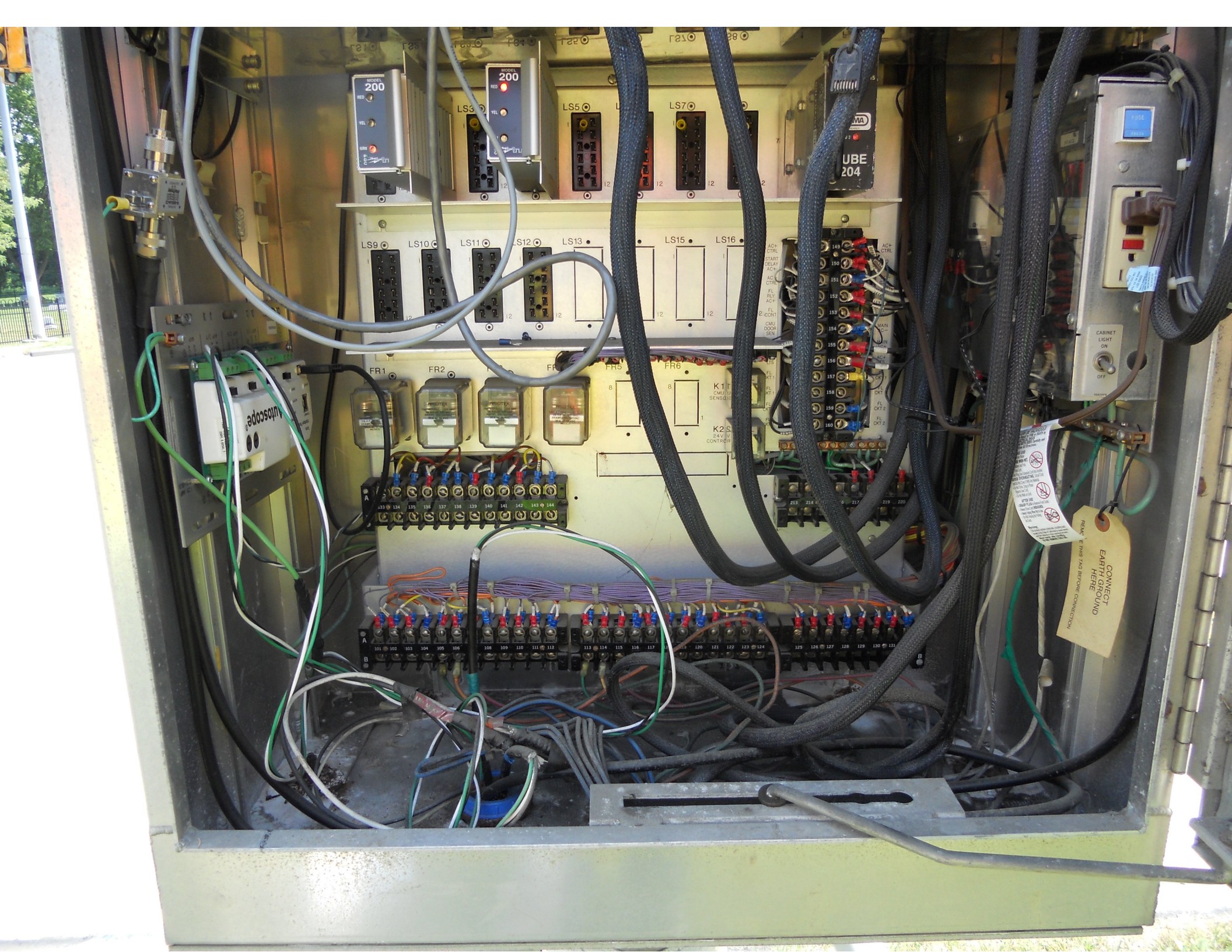
The Autoscope unit is a blue control panel with a 'POWER' switch and a 'SELECT' knob. It has a 'VIDEO OUTPUT' port and a 'PORT' section with 'RX VALID' and 'TX' indicators. It is connected to the main unit via a cable.

TELEMETRY TLM-9

PORT

RX VALID TX

The Telemetry TLM-9 unit is a small blue control panel with a 'PORT' section and 'RX VALID' and 'TX' indicators. It is connected to the main unit via a cable.



MODEL 200  
RED  
TEL  
Eaton

MODEL 200  
RED  
TEL  
Eaton

UBA 204

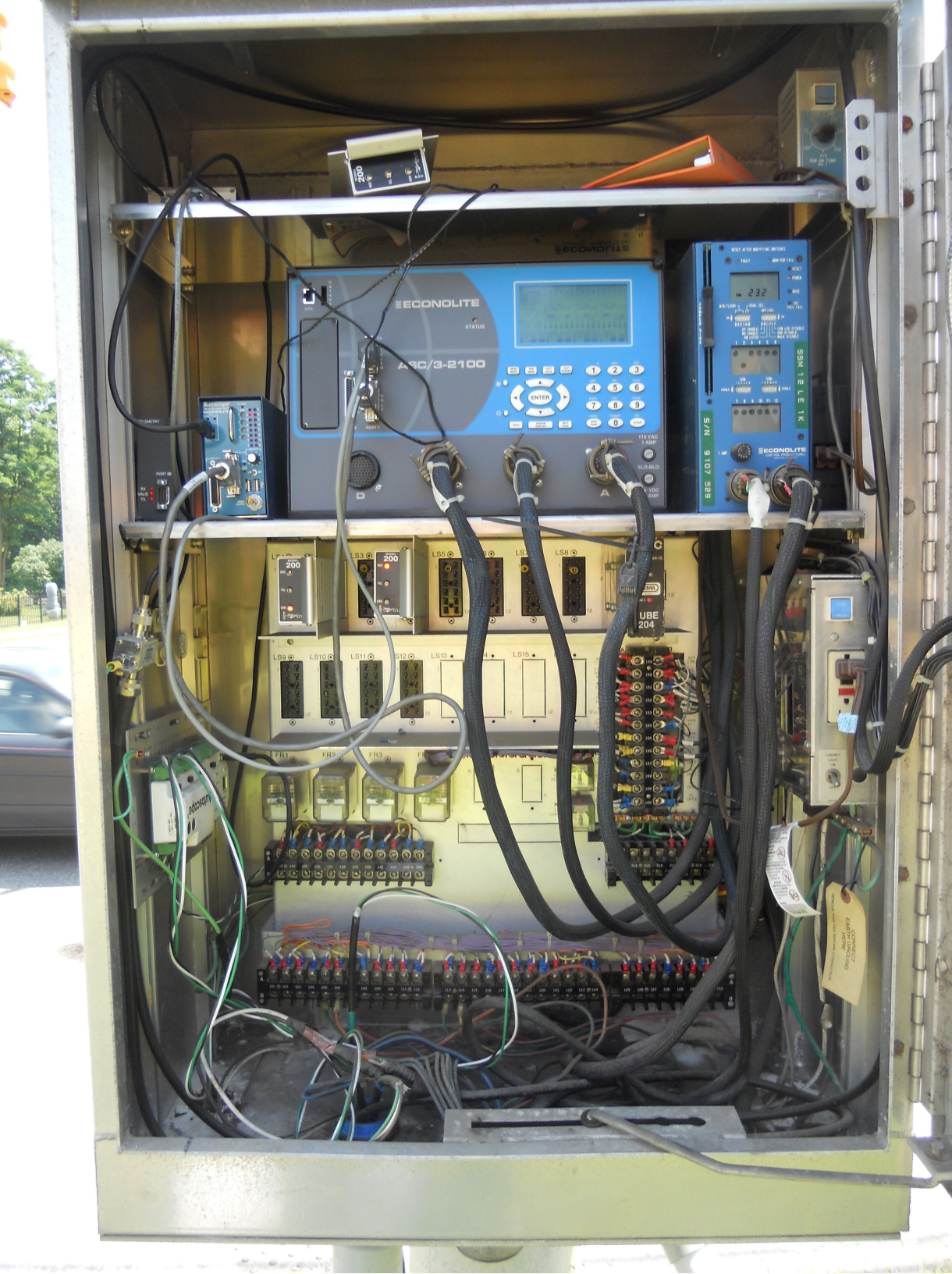
LS9 LS10 LS11 LS12 LS13 LS15 LS16

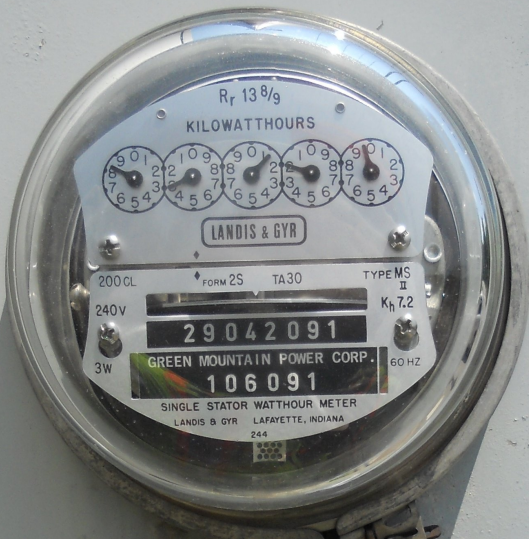
FR1 FR2 FR5 FR6  
K1  
CMI  
SENSING  
K2  
24V  
CONTR

Autoscope

CONNECT  
EARTH GROUND  
HERE

WARNING  
DANGER  
ELECTRIC SHOCK  
Hazardous Voltage  
Do not touch any electrical components  
or wiring when the cabinet is open.  
Always use proper safety procedures  
when working on electrical equipment.  
After use, always disconnect power  
before working on the equipment.





R<sub>r</sub> 13 8/9

KILOWATTHOURS



LANDIS & GYR

200 CL FORM 2S TA30 TYPE MS II

240V

K<sub>h</sub> 7.2

29042091

GREEN MOUNTAIN POWER CORP.

106091

SINGLE STATOR WATTHOUR METER

LANDIS & GYR LAFAYETTE, INDIANA

244



DO NOT OPEN UNDER FLAP  
DO NOT BREAK SEAL





ALL TRUCKS  
→

20

17

20

20

20

20

20

20

20

20

20

20

20

20

20

20

20

20

20

20

20

20

20

20

20

20

20

20

20

20

20

20

20

20

20

20

20

20

20

20

20

20

20

20

20

20

20

20

20

20

20

20

20

20

20

20

20

20

20

20

20

20

20

20

20

20

20

20

20

20

20

20

20

20

20

20

20

20

20

20

20

20

20

20

20

20

20

20

20

20

20

20

20

20

20

20

20

20

20

20



















SPEED  
LIMIT  
35

(No U-turn symbol)

(Yellow diamond warning sign)

(Traffic light)

(Traffic light)

(Traffic light)

(Traffic light)


(Traffic light)

(Traffic light)







 SAINT MICHAEL'S COLLEGE

Vt. 15	↑
I-89 South/ Winooski	→
Essex - North Campus	←



DO NOT  
ENTER

DO NOT  
ENTER





DO NOT  
ENTER











UNION METAL  
MFG. CO.  
L9E728  
MAY 1958

Date: 08/10/2012

Timing Data:

Phase	1	2	3	4	5	6	7	8	9
Phases in use		X		X		X		X	
Min Green	0	8	0	8	0	8	0	8	5
Walk	0	10	0	10	0	10	0	10	0
Ped Clr	0	16	0	16	0	16	0	16	0
Veh Ext	0	2	0	2	0	2	0	2	5
MAX 1	0	44	0	26	0	44	0	26	35
MAX 2	0	64	0	15	0	64	0	15	40
MAX 3	0	67	0	14	0	67	0	14	0
Yellow	0	4	0	4	0	4	0	4	3
All Red	0	2	0	2	0	2	0	2	1
Recall to Max	0	0	0	0	0	0	0	0	0

Coordination Patterns: ACS3/Naztec Cordinated Phases 2 & 6

Pattern 1								
Cycle Length	82	Offset	90	COS	111			
Splits	Ph 1	0	Ph 2	61	Ph 3	0	Ph 4	39
	Ph 5	0	Ph 6	0	Ph 7	0	Ph 8	0
	Ph 9	0	Ph 10	0	Ph 11	0	Ph 12	0
Pattern 2(21)								
Cycle Length	91	Offset	65	COS	121			
Splits	Ph 1	0	Ph 2	77	Ph 3	0	Ph 4	23
	Ph 5	0	Ph 6	0	Ph 7	0	Ph 8	0
	Ph 9	0	Ph 10	0	Ph 11	0	Ph 12	0
Pattern 3								
Cycle Length	93	Offset	93	COS	131			
Splits	Ph 1	0	Ph 2	80	Ph 3	0	Ph 4	20
	Ph 5	0	Ph 6	0	Ph 7	0	Ph 8	0
	Ph 9	0	Ph 10	0	Ph 11	0	Ph 12	0

Day Plan [1]

Event	Action Plan	Step Begins
1	2	0600
2	1	0900
3	3	1400
4	1	1800
5	4	2300
15	0	0100

Day Plan [2]

Event	Action Plan	Step Begins
1	2	0500
2	1	0800
3	3	1300
4	1	1700
5	4	2300

Day Plan [3]

Event	Action Plan	Step Begins
1	2	0700
2	1	1000
3	3	1500
4	1	1900
5	4	0100

Action Plan

Action Plan	Pattern
1	1
2	2
3	3
4	254-FREE
5	4